

USE STANDARD STRENGTH PIPE  
 USE CEMENT MORTAR FOR ALL VITRIFIED CLAY PIPE JOINTS  
 ENCASE FOUR FEET OF SEWER AT POINTS OF INTERFERENCE WITH POLES AS PER S. 119

ALL STRUCTURES SHALL BE BRICK SEWER STRUCTURES AS PER PLAN NO. S-2 FOR EXCIT AS WITH  
 USE STANDARD MANHOLE FRAMES AND COVERS AS PER PLAN NO. S-2  
 CONSTRUCT TOPS OF ALL STRUCTURES IN RIGHTS OF WAY 6" ABOVE FINISHED GRADE  
 RESURFACE ALL TRENCHES WITHIN PAVED AREA TO MEET LOS ANGELES COUNTY ROAD DEPT. OR  
 STATE HIGHWAY REQUIREMENTS

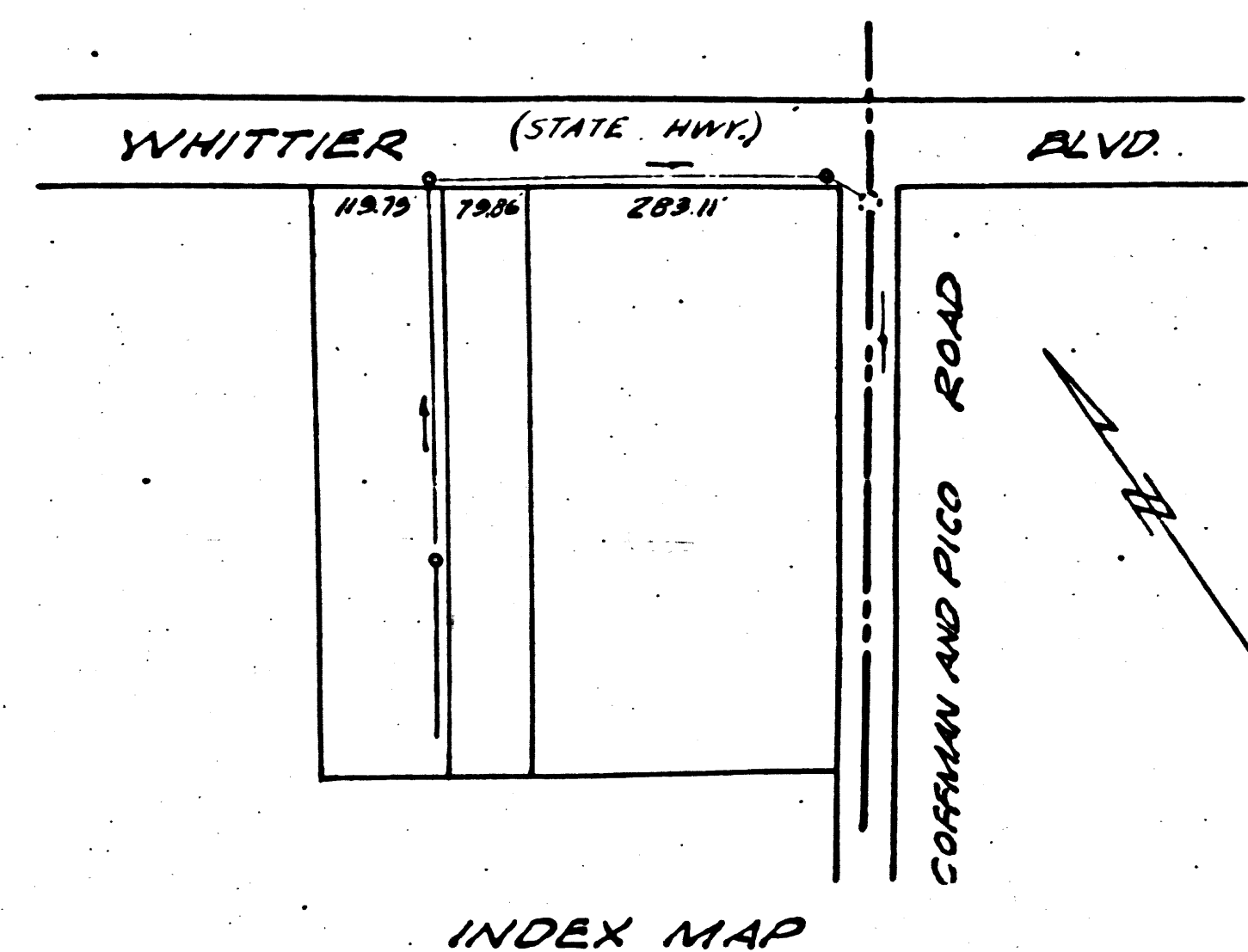
NO REVISIONS SHALL BE MADE IN THESE PLANS WITHOUT APPROVAL OF THE COUNTY ENGINEER  
 NO REPRESENTATIVE OF THE COUNTY ENGINEER WILL SURVEY OR LAY OUT ANY PORTION  
 OF THE WORK  
 THE OWNER OR HIS AUTHORIZED REPRESENTATIVE SHALL FURNISH THE COUNTY ENGINEER WITH  
 GRADE SHEETS AND STATIONS OF ALL HOUSE CONNECTIONS AND Y BRANCHES AND SHALL  
 PROVIDE STAKES FOR THEM AT THEIR PROPER LOCATIONS WITH STATIONING PLAINLY MARKED  
 ANY CHANGE OF LOCATION SHALL BE REQUESTED IN WRITING BY THE OWNER OR HIS  
 REPRESENTATIVE

PROFILE ALIGNMENT AND GRADE OF  
**SANITARY SEWERS**  
 TO BE CONSTRUCTED IN  
**WHITTIER BLVD.**  
 BETWEEN COFFMAN-PICO RD. 400± FT WESTERLY.

PRIVATE CONTRACT NO. 871  
 W. S. 36  
 SHEET ONE OF ONE SHEETS

SCALE: VERT. 1"=4'  
 HORIZ. 1"=40'

PREPARED IN THE OFFICES OF  
**KEMMERER ENG. CO.**  
 BY *John M. Kemmerer*  
 REG. C. E. NO. 212



FOR LEGEND  
 SEE PLAN NO. S-2-64

NOTE:  
 GRADES TO WHICH THIS IMPROVEMENT IS TO BE CONSTRUCTED ARE SHOWN ON PLANS AND PROFILE  
 GRADE POINTS FOR TOP OF CURB, CENTER LINE OF STREET OR CENTER LINE OF ALLEY ARE SHOWN  
 CIRCLES ON PROFILES AT ALL POINTS BETWEEN DESIGNATED POINTS THE GRADE SHALL BE ESTABLISHED  
 SO AS TO CONFORM TO A STRAIGHT LINE DRAWN BETWEEN SAID DESIGNATED POINTS.  
 ELEVATIONS ARE IN FEET ABOVE U. S. G. S. DATUM OR MEAN SEA LEVEL.  
 THIS DRAWING AND THE DATA HEREON ARE HEREBY MADE A PART OF THE SPECIFICATIONS.  
 WORK SHALL BE CONSTRUCTED ACCORDING TO SPECIFICATIONS ON FILE IN THE OFFICE OF THE  
 COUNTY ENGINEER AND SHALL BE PROSECUTED ONLY IN THE PRESENCE OF THE COUNTY ENGINEER.  
 BEFORE WORK CAN BE STARTED, THE CONTRACTOR MUST OBTAIN A PERMIT TO EXCAVATE  
 COUNTY STREETS FROM THE L. A. COUNTY ROAD DEPT. 211 26 MAIN ST. LOS ANGELES MAKE A DEPOSIT  
 WITH THE COUNTY ENGINEER, 700 FASHION LEAGUE BUILDING, SUFFICIENT TO COVER THE COST  
 OF CONSTRUCTION INSPECTION AND RECORD PLANS.  
 IF WORK IS TO BE DONE IN A STATE HIGHWAY, A PERMIT MUST BE OBTAINED FROM THE STA.  
 OF CALIFORNIA, DIVISION OF HIGHWAYS, 808 STATE BUILDING, AFTER MAKING THE DEPOSIT WITH THE  
 COUNTY ENGINEER.

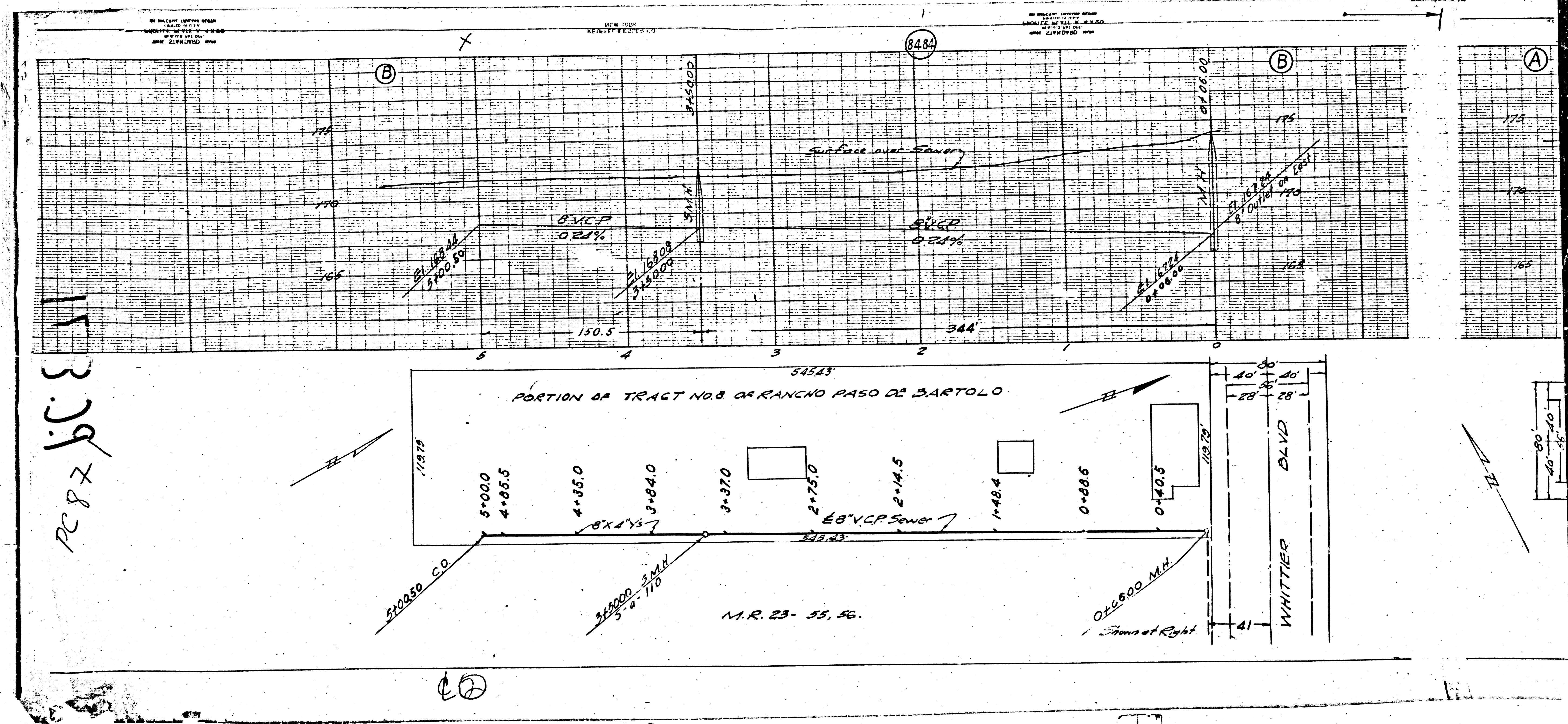
COUNTY OF LOS ANGELES, CALIFORNIA

APPROVED: *Edmund*  
 COUNTY ENGINEER

APPROVED: *John M. Kemmerer*  
 CHIEF ENGINEER OF COUNTY  
 SANITATION DISTRICT NO. 2

Final Check 1/21/47 H.K.S.

CHECKED BY *Edmond* Sept 1947  
 OFFICE OF COUNTY ENGINEER, REG. C. E. NO. 212



PC 87 b.c. 3

80

No