

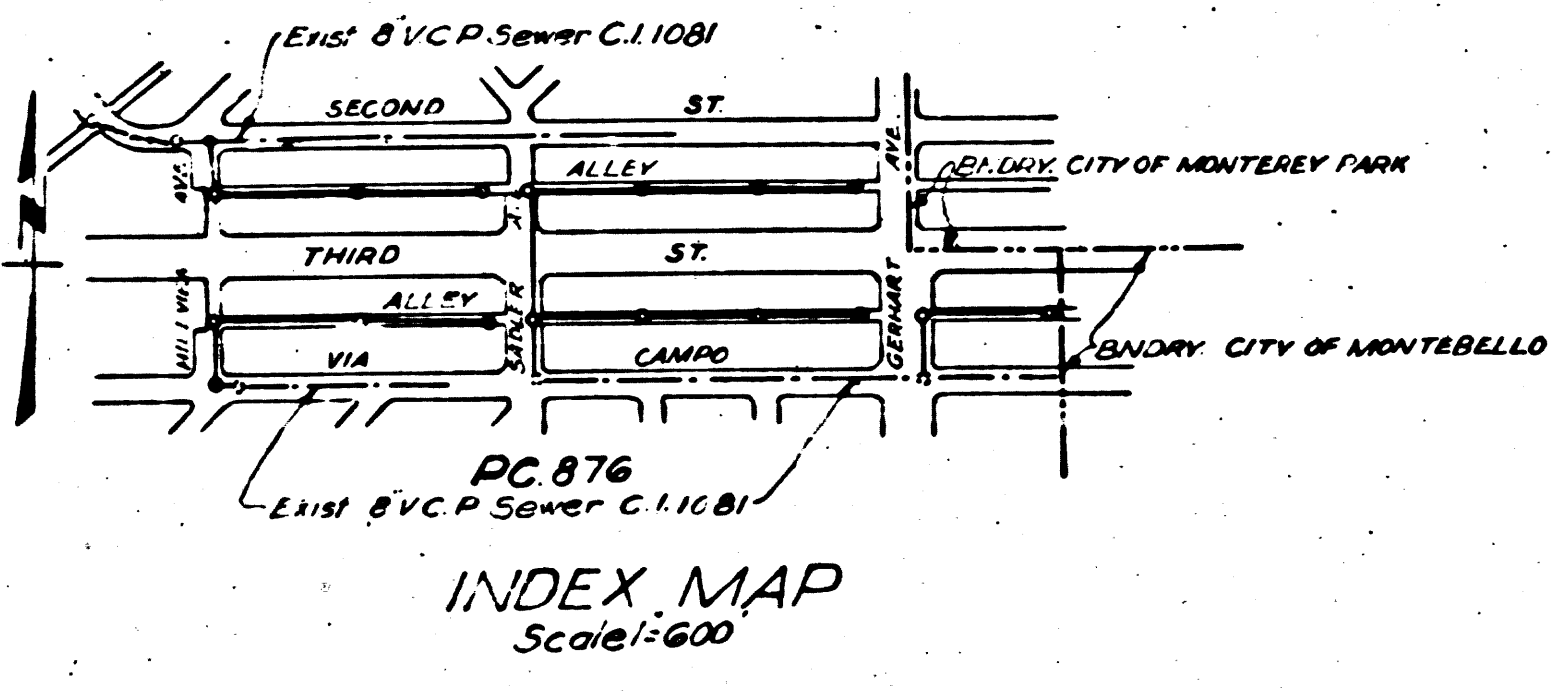
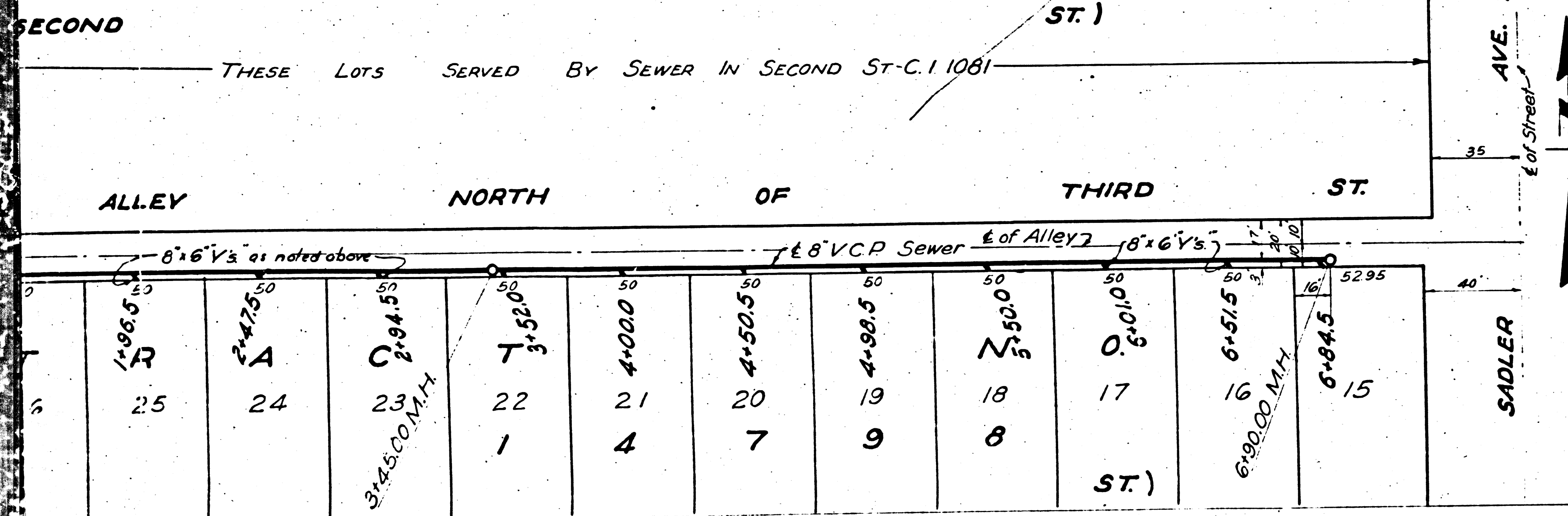
8724	245	240
34300	34100	34100

1. Use standard manhole frames and covers, S-4-117
2. Use standard strength pipe
3. Use cement mortar for all vitrified clay pipe joints
4. All structures shall be brick sewer structures, S-4-104
5. Resurface all trench within paved area to meet County Road Dept. requirements
6. Construct House Connections with invert at Property Line 5 Ft. below grade of center line of Alley

B.M. Elev. 260.87 cut. spk. in conc. mon. S. side Third St. at W. side of Edison Co. R/W 12' down per Rd Dept. E.R. B.C. 913 p.4

NOTE: No representative of the County Engineer will survey or lay out any portion of the work. The owner or his authorized representative shall furnish the County Engineer with grade sheets and stakes for all these connections and all branches and shall provide stakes for them at their proper locations with stationing plainly marked. Any change in locations shall be requested in writing by the owner or his representative. No revisions shall be made in these plans without approval of the County Engineer.

PROFILE ALIGNMENT AND GRADE OF  
**SANITARY SEWERS**  
**TO BE CONSTRUCTED IN**  
**ALLEY NORTH OF THIRD ST.**  
 HILLVIEW AVE TO SADLER AVE.  
**HILLVIEW AVE.**  
 SECOND ST. TO ALLEY NORTH OF THIRD ST.  
**ALLEY NORTH OF THIRD ST.**  
 SADLER AVE TO GERHART AVE.  
**SADLER AVE.**  
 ALLEY SOUTH OF THIRD ST. TO ALLEY NORTH OF THIRD ST.  
**ALLEY SOUTH OF THIRD ST.**  
 HILLVIEW AVE TO SADLER AVE.  
**HILLVIEW AVE.**  
 VIA CAMPO TO ALLEY SOUTH OF THIRD ST.  
**VIA CAMPO**  
 20 FT. EAST OF HILLVIEW AVE. TO HILLVIEW AVE.  
**ALLEY SOUTH OF THIRD ST.**  
 SADLER AVE TO GERHART AVE.  
**SADLER AVE.**  
 VIA CAMPO TO ALLEY SOUTH OF THIRD ST.  
**ALLEY SOUTH OF THIRD ST.**  
 GERHART AVE TO EAST LINE OF TRACT  
**GERHART AVE.**  
 VIA CAMPO TO ALLEY SOUTH OF THIRD ST.  
**PRIVATE CONTRACT NO. 876**  
 W.S. 36  
 SCALES 1"=10' HORIZ. 1"=2' VERT.

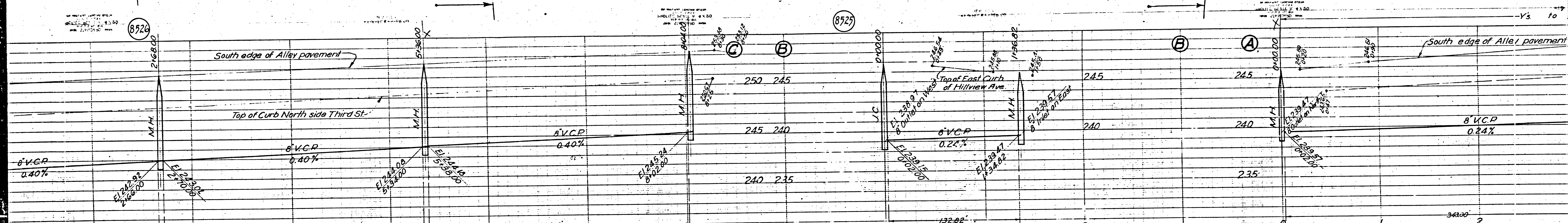
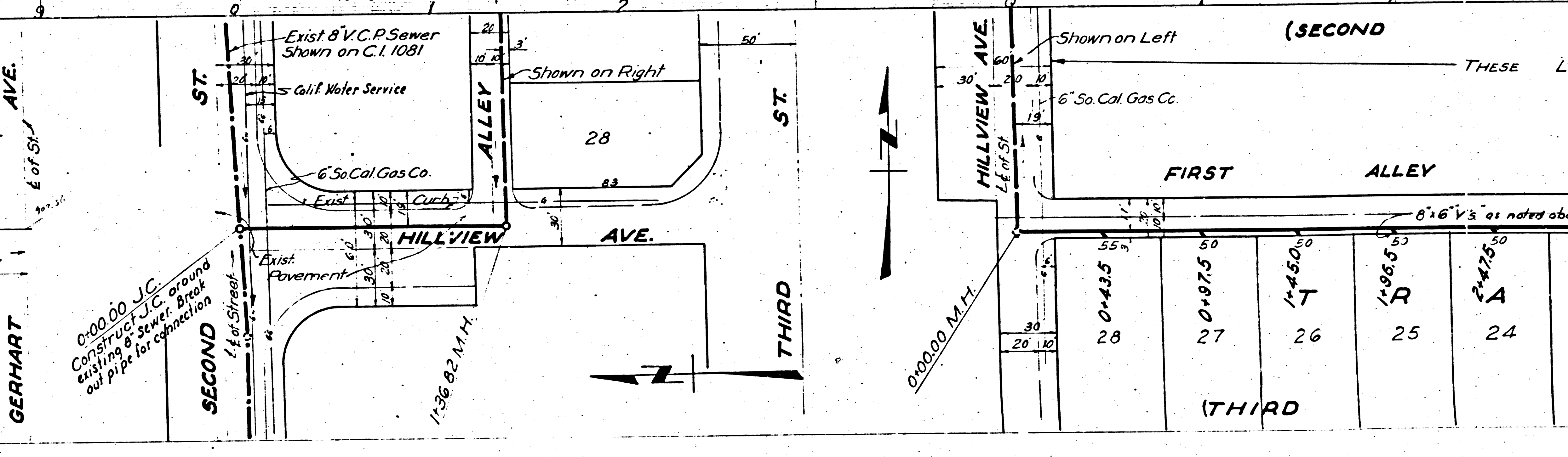
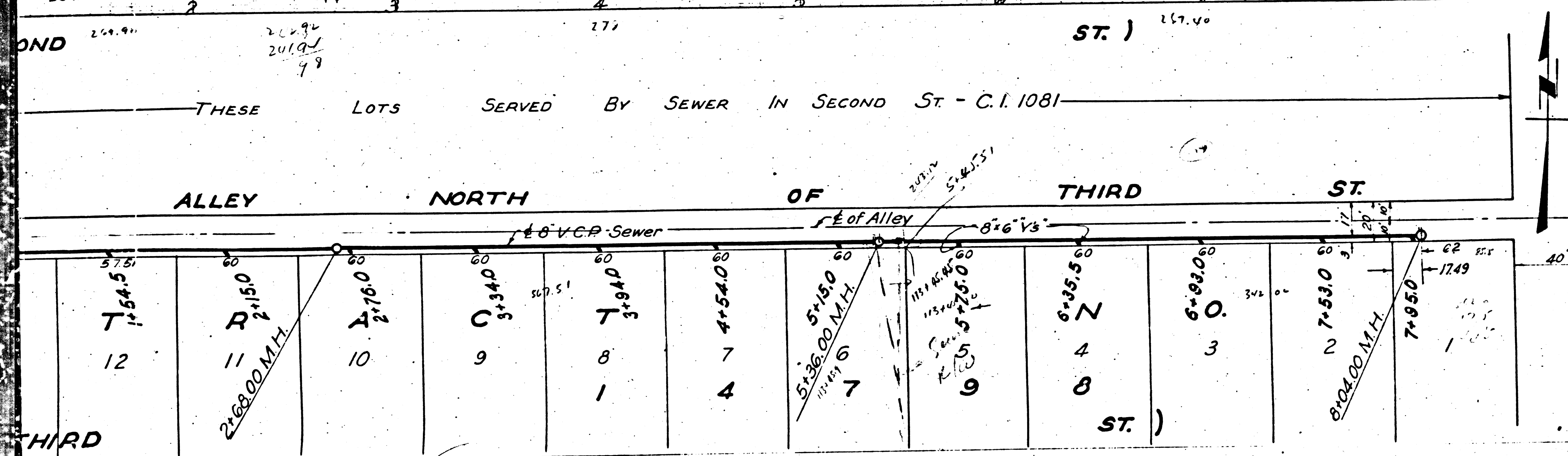
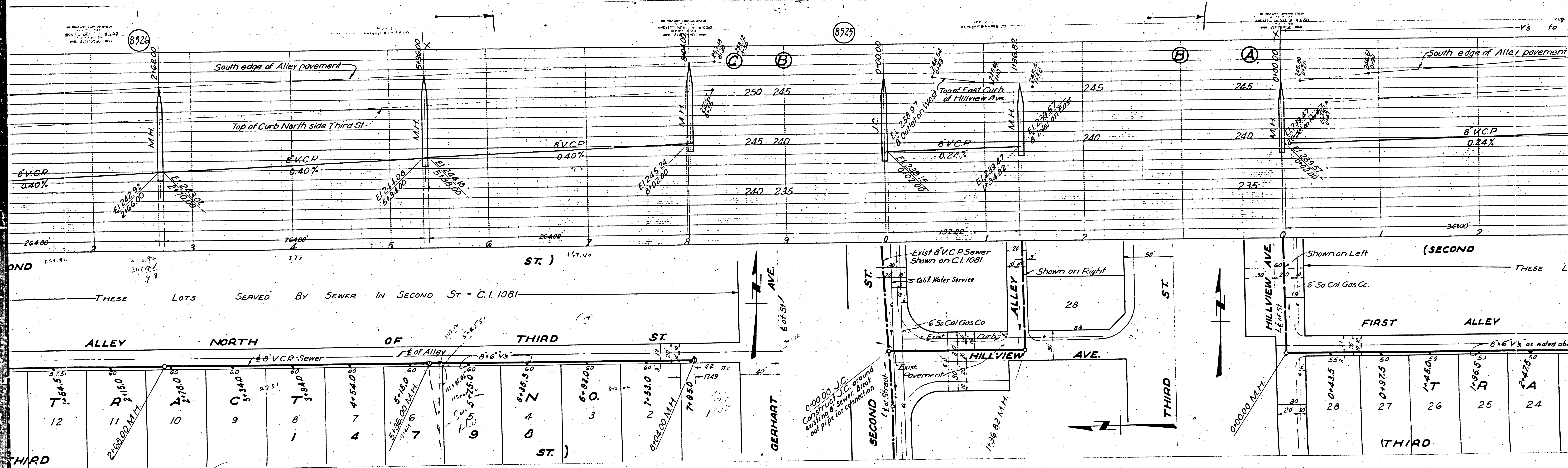


SHEET 1 OF 2 SHEETS  
 PREPARED IN THE OFFICE OF KARLE TUTTLE  
 BY *Karle Tuttle*  
 FOR LEGEND SEE PLAN NO. S-4-64  
 R.E. 2000.  
 Grades to which this improvement is to be constructed are shown on Plans and Profile. Grade points for top of curb, center line of street or center line of alley are shown by circles on Profiles. All points between designated points the grade shall be established so as to conform to a straight line drawn between said designated points.  
 Elevations are in feet above U.S.G.S datum or mean sea level.  
 This drawing and the data hereon are hereby made a part of the specifications.  
 Work shall be constructed according to specifications on file in the office of the County Engineer and shall be prosecuted only in the presence of the County Engineer.  
 Before work can be started the Contractor must obtain a permit to excavate in County Streets from the L. A. County Road Dept., 211 So. Main St., and make a deposit with the County Engineer, 700 Fashion League Bldg, sufficient to cover the cost of construction inspection and record plans.  
 If work is to be done on a State Highway, a permit must be obtained from the State of California Division of Highways, 808 State Bldg after making the deposit with the County Engineer.  
**COUNTY OF LOS ANGELES, CALIFORNIA**  
 APPROVED *William*  
 CHIEF DEPUTY COUNTY ENGINEER  
 APPROVED *C.R. Compton*  
 ASST. CHIEF ENGINEER OF COUNTY SANITATION DISTRICT NO. 2  
 CHECKED BY *J.F. Pruech*  
 Office of County Engineer, R.E. 2000.

*John W. ... L-3-44*

20



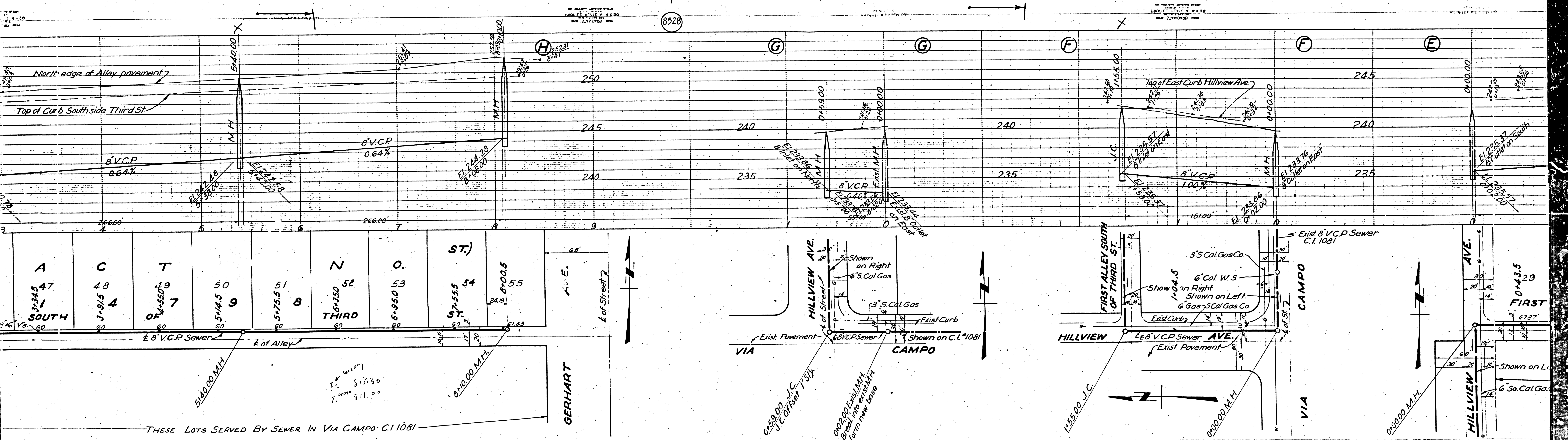


22









THESE LOTS SERVED BY SEWER IN VIA CAMPO C.I. 1081

GERHART

①

①







