

USE STANDARD STRENGTH PIPE EXCEPT AS NOTED
 USE CEMENT MORTAR RUBBER LINED VITRIFIED CLAY PIPE JOINTS
 ENCASE FOUR FEET OF SEWER AT POINTS OF INTERFERENCE WITH POLES AS PER S. & J. 10
 CONSTRUCT HOUSE CONNECTIONS WITH INVERT AT CURB LINE 15 FEET BELOW CURB GRADE
 EXCEPT AS NOTED
 ALL STRUCTURES SHALL BE BRICK SEWER STRUCTURES AS PER PLAN NO. S-4-104
 USE STANDARD MANHOLE FRAMES AND COVERS AS PER PLAN NO. S-4-117
 RESURFACE ALL TRENCHES WITHIN PAVED AREA TO MEET LOS ANGELES COUNTY ROAD DEPT. OR
 STATE HIGHWAY REQUIREMENTS
 NO REVISIONS SHALL BE MADE IN THESE PLANS WITHOUT APPROVAL OF THE COUNTY ENGINEER
 NO REPRESENTATIVE OF THE COUNTY ENGINEER WILL SURVEY OR LAY OUT ANY PORTION
 OF THE WORK
 THE OWNER OR HIS AUTHORIZED REPRESENTATIVE SHALL FURNISH THE COUNTY ENGINEER WITH
 GRADE SHEETS AND STATIONS OF ALL HOUSE CONNECTIONS AND Y BRANCHES AND SHALL
 PROVIDE STAKES FOR THEM AT THEIR PROPER LOCATIONS WITH STATIONING PLAINLY MARKED.
 ANY CHANGE OF LOCATION SHALL BE REQUESTED IN WRITING BY THE OWNER OR HIS
 REPRESENTATIVE

Note: Sanitation District must be notified before work can start

PROFILE ALIGNMENT AND GRADE OF
SANITARY SEWERS
 TO BE CONSTRUCTED IN
 LINDSEY AVENUE
 BETWEEN NO. 50 LINES OF TRACT NO. 15559
 COOLHURST DRIVE
 BETWEEN LINDSEY AVE AND LEMORAN AVE.
 LEMORAN AVENUE
 BETWEEN COOLHURST DR. & BALFOUR ST.
 BALFOUR STREET
 BETWEEN LINDSEY AVE. & PASSONS BLVD.

PRIVATE CONTRACT NO. 905
 W. S. 36
 SHEET ONE OF ONE SHEETS

SCALE: VERT. 1"=4'

PREPARED IN THE OFFICES OF
KEMMERER ENG. CO.

BY: *John M. Kemmerer*
 REG. C. E. NO. 878

FOR LEGEND
 SEE PLAN NO. S-4-84

NOV 5 1948

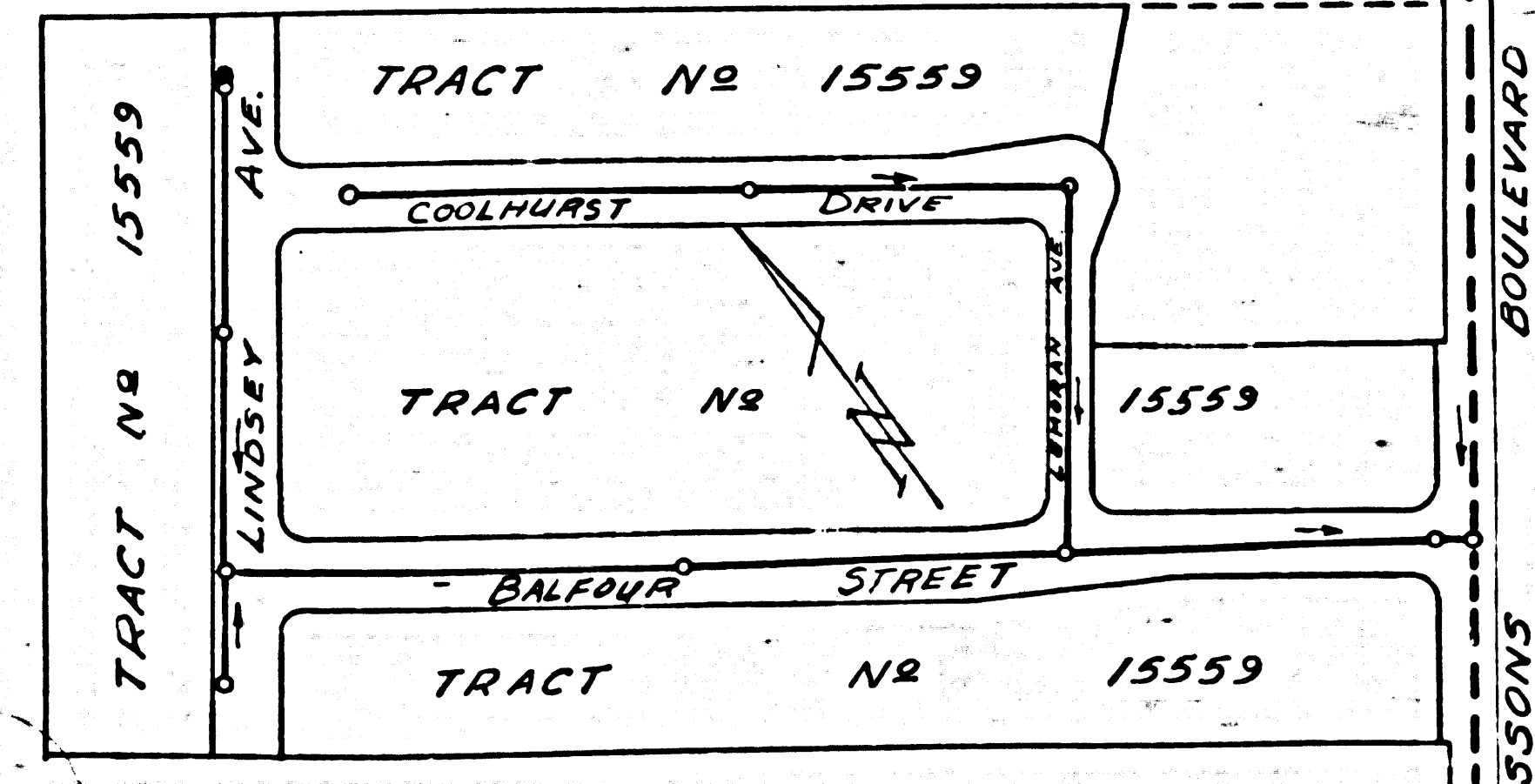
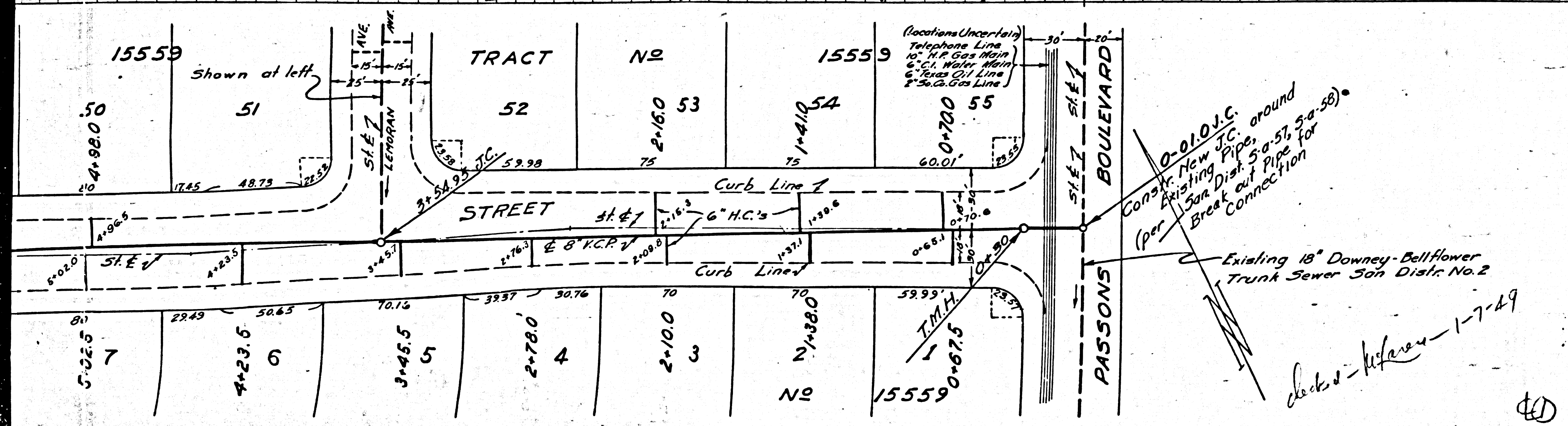
NOTE:
 GRADES TO WHICH THIS IMPROVEMENT IS TO BE CONSTRUCTED ARE SHOWN ON PLANS AND PROFILES
 GRADE POINTS FOR TOP OF CURB CENTER LINE OF STREET OR CENTER LINE OF ALLEY ARE SHOWN BY
 CIRCLES ON PROFILES AT ALL POINTS BETWEEN DESIGNATED POINTS THE GRADE SHALL BE ESTABLISHED
 SO AS TO CONFORM TO A STRAIGHT LINE DRAWN BETWEEN SAID DESIGNATED POINTS.
 ELEVATIONS ARE IN FEET ABOVE U. S. & M. DATUM OR MEAN SEA LEVEL.
 THIS DRAWING AND THE DATA HEREON ARE HEREBY MADE A PART OF THE SPECIFICATIONS
 WORK SHALL BE CONSTRUCTED ACCORDING TO SPECIFICATIONS ON FILE IN THE OFFICE OF THE
 COUNTY ENGINEER AND SHALL BE PROSECUTED ONLY IN THE PRESENCE OF THE COUNTY ENGINEER
 BEFORE WORK CAN BE STARTED. THE CONTRACTOR MUST OBTAIN A PERMIT TO EXCAVATE IN
 COUNTY STREETS FROM THE L. A. COUNTY ROAD DEPT., 211 BOLSHAIN ST. LOS ANGELES AND MAKE A DEPOSIT
 WITH THE COUNTY ENGINEER, 700 FASHION LEAGUE BUILDING, SUFFICIENT TO COVER THE COST OF
 CONSTRUCTION INSPECTION AND RECORD PLANS.
 IF WORK IS TO BE DONE IN A STATE HIGHWAY, A PERMIT MUST BE OBTAINED FROM THE STATE
 OF CALIFORNIA, DIVISION OF HIGHWAYS, 808 STATE BUILDING, AFTER MAKING THE DEPOSIT WITH THE
 COUNTY ENGINEER.

COUNTY OF LOS ANGELES, CALIFORNIA

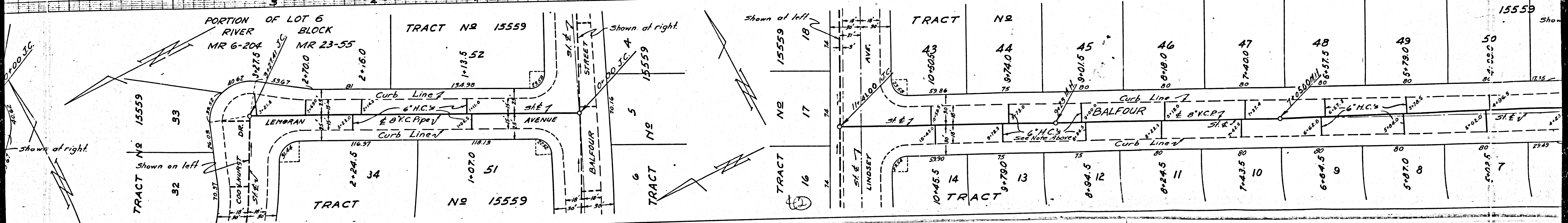
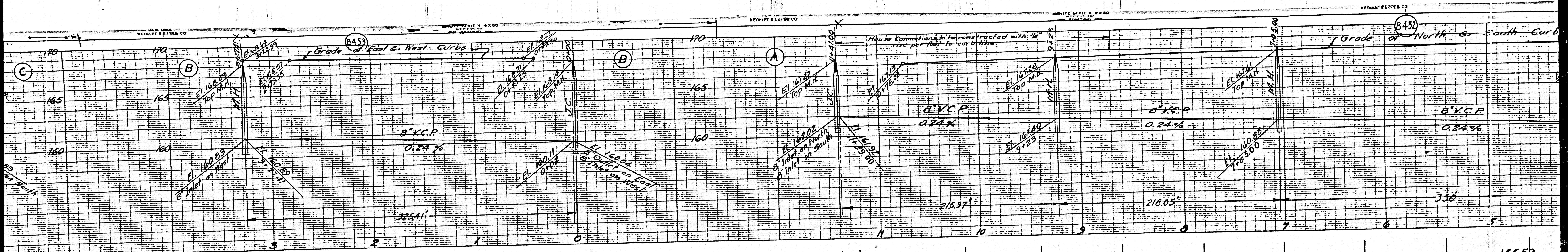
APPROVED: *Edmund*
 COUNTY ENGINEER

APPROVED: _____
 COUNTY ENGINEER

CHECKED BY: *John M. Kemmerer*
 OFFICE OF COUNTY ENGINEER

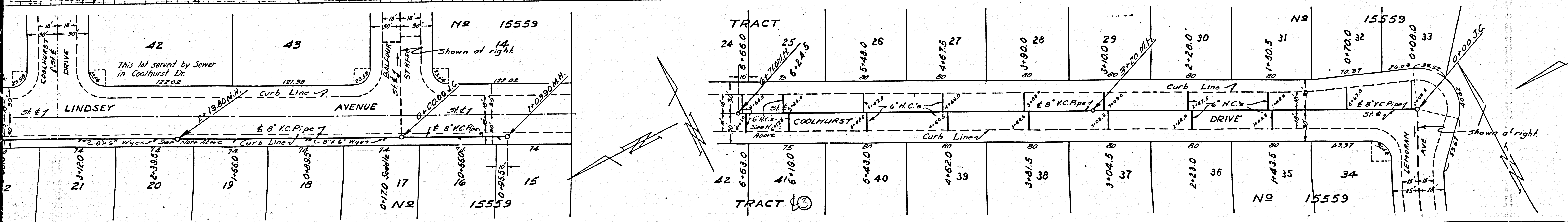
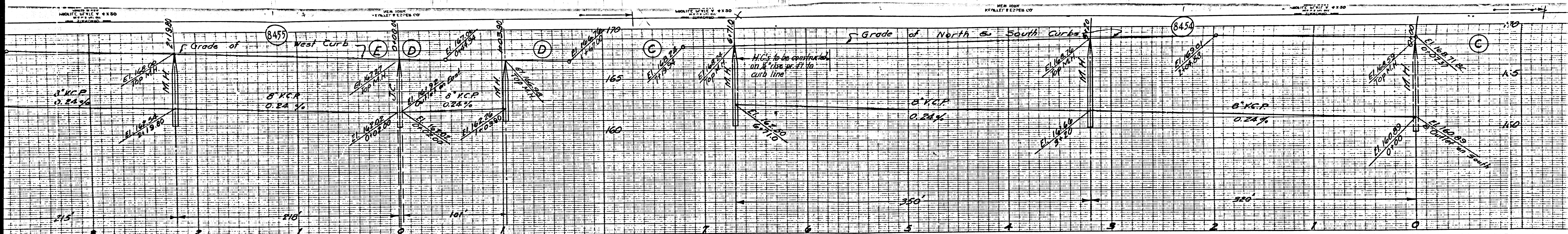


INDEX MAP
 1"=200'
 (P.C. NO. 905)



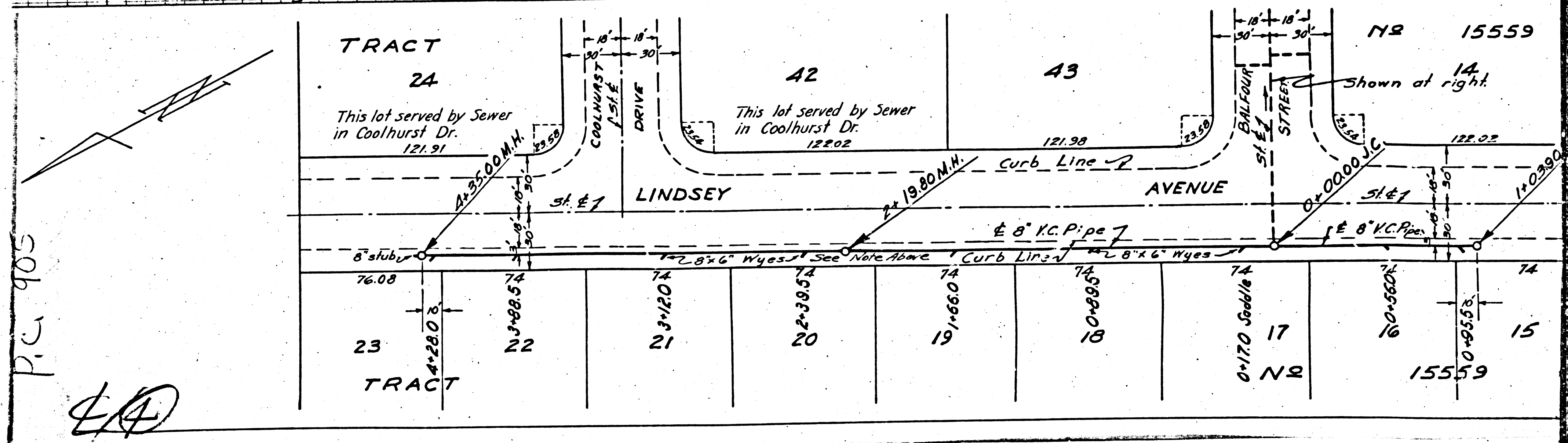
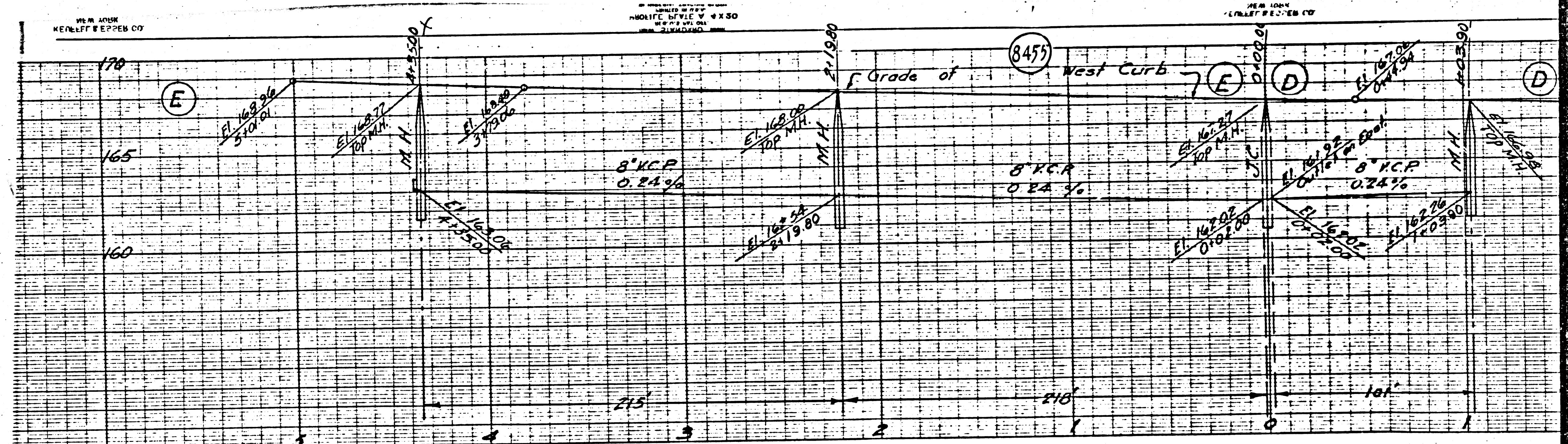
M3

M5



M3

M3



P.C. 905

LD