

(8891)
 B.M. T525 EL. 79.529, FB. T10-01
 S.W. Corner CARLIN AVENUE & CARESS
 STREET. C. Spk. in base of 80' Gum
 tree (N. Side).

NOTE: NO REPRESENTATIVE OF THE COUNTY ENGINEER WILL SURVEY OR LAY OUT ANY PORTION OF THE WORK. THE OWNER OR HIS AUTHORIZED REPRESENTATIVE SHALL FURNISH THE COUNTY ENGINEER WITH GRADE SHEETS AND STATIONING OF ALL HOUSE CONNECTIONS AND TRENCHES AND SHALL PROVIDE STAKES FOR THEM. AT THEIR PROPER LOCATIONS WITH STATIONING PLAINLY MARKED. ANY CHANGE OF LOCATION SHALL BE REQUESTED IN WRITING BY OWNER OR HIS REPRESENTATIVE. NO REVISION SHALL BE MADE TO THESE PLANS WITHOUT APPROVAL OF THE COUNTY ENGINEER.

NOTE: BEFORE ANY CONNECTION FOR THE DISPOSAL OF LIQUID INDUSTRIAL WASTE IS MADE TO THIS SEWER DETAILED PLANS MUST BE SUBMITTED TO AND PERMIT SECURED FROM THE COUNTY ENGINEER.

PROFILE, ALIGNMENT AND GRADE OF
SANITARY SEWERS
 TO BE CONSTRUCTED IN
CARESS STREET
 BETWEEN CARLIN AVE. AND MAGNOLIA ST.

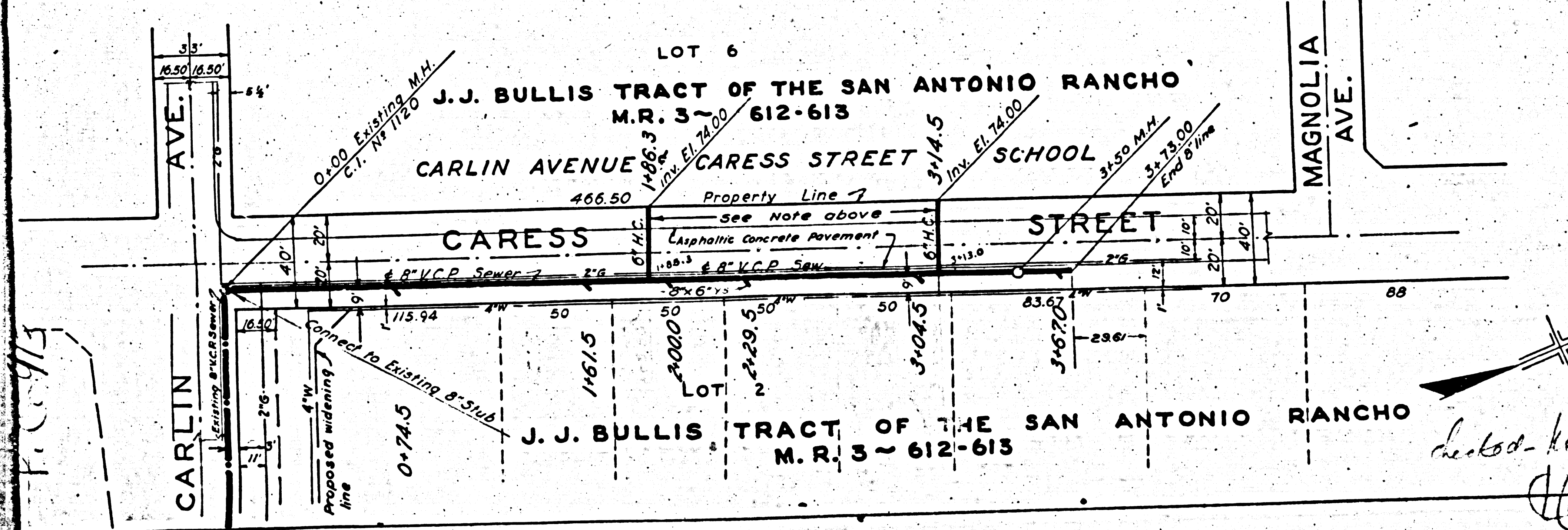
PRIVATE CONTRACT NO 913
 W.S. 32

PREPARED IN THE OFFICES OF
KISTNER, CURTIS & WRIGHT

BY *H.C. Vandenberg*
 REG. C.E. NO 6617

SCALE { HORIZ: 1" = 40'
 VERT: 1" = 4' } OCT. 14, 1948

- NOTES:
1. USE STANDARD MANHOLE FRAME AND COVER 3'-0" DIA.
 2. USE STANDARD STRENGTH PIPE.
 3. USE CEMENT MORTAR FOR ALL VITRIFIED CLAY PIPE JOINTS.
 4. RESURFACE ALL TRENCH WITHIN PAVED AREA TO MEET LOS ANGELES COUNTY ROAD DEPT. REQUIREMENTS.
 5. ALL STRUCTURES SHALL BE BRICK SEWER STRUCTURES 3'-0" DIA.
 6. GRADES TO WHICH THIS IMPROVEMENT IS TO BE CONSTRUCTED ARE SHOWN ON THE PLANS AT ALL POINTS. BETWEEN DESIGNATED POINTS THE GRADE SHALL BE ESTABLISHED SO AS TO CONFORM TO A STRAIGHT LINE DRAWN BETWEEN SAID DESIGNATED POINTS.
 7. ELEVATIONS ARE IN FEET ABOVE U.S.S. DATUM OR MEAN SEA LEVEL.
 8. THIS DRAWING AND THE DATA HEREON ARE HEREBY MADE A PART OF THE SPECIFICATIONS.
 9. WORK SHALL BE CONSTRUCTED ACCORDING TO SPECIFICATIONS ON FILE IN THE OFFICE OF THE COUNTY ENGINEER.
 10. BEFORE WORK CAN BE STARTED, THE CONTRACTOR MUST OBTAIN A PERMIT TO EXCAVATE IN COUNTY STREETS FROM THE LOS ANGELES COUNTY ROAD DEPT., 211 N. MAIN ST. AND MAKE A DEPOSIT WITH THE COUNTY ENGINEER, CIVIC CENTER BUILDING, SUFFICIENT TO COVER THE COST OF CONSTRUCTION, INSPECTION AND RECORD PLANS.



COUNTY OF LOS ANGELES, CALIFORNIA

APPROVED: *[Signature]* COUNTY ENGINEER

APPROVED: *[Signature]* CHIEF ENGINEER OF COUNTY SANITATION DISTRICT #1

CHECKED BY: *[Signature]* OFFICE OF THE COUNTY ENGINEER REG. C.E. NO 6322

APPROVED FOR THE COLLECTION AND PRETREATMENT OF LIQUID INDUSTRIAL WASTE
[Signature] INDUSTRIAL WASTE ENGINEER, OFFICE OF COUNTY ENGINEER.

Checked - Kistner - 5-27-49