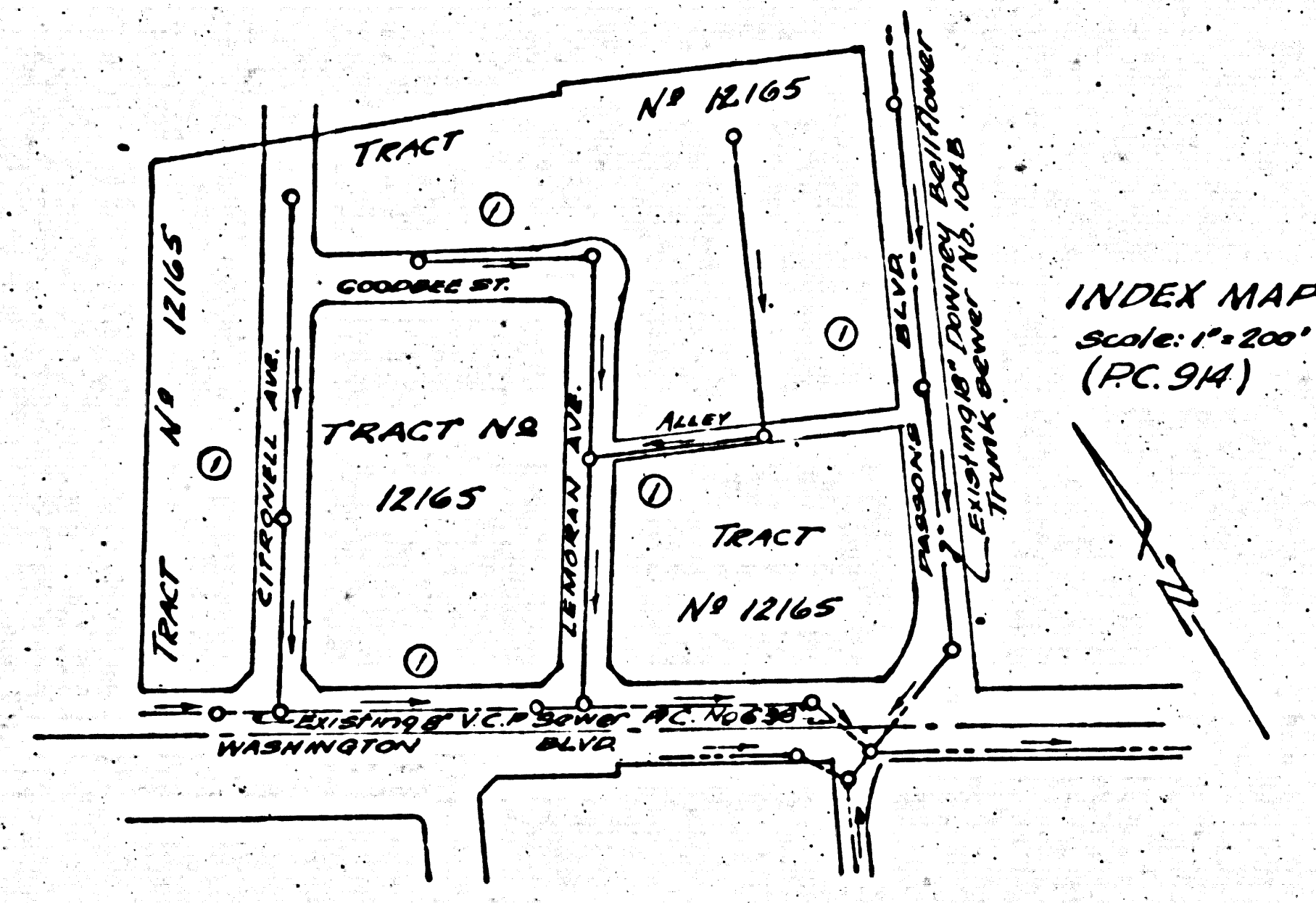


8742

USE STANDARD STRENGTH PIPE EXCEPT AS NOTED
 USE CEMENT MORTAR FOR ALL VITRIFIED CLAY PIPE JOINTS
 ENCASE FOUR PART OF JOINTS AT POINTS OF INTERFERENCE WITH POLES AS PER S. & L. 112
 RECONSTRUCT HOUSE CONNECTIONS WITH INVERT AT CURB LINE 12\"/>

NO REVISIONS SHALL BE MADE IN THESE PLANS WITHOUT APPROVAL OF THE COUNTY ENGINEER
 NO MODIFICATION OF THE COUNTY ENGINEER SHALL SURVEY OR LAY OUT ANY PORTION
 OF THE WORK
 THE OWNER OR HIS AUTHORIZED REPRESENTATIVE SHALL FURNISH THE COUNTY ENGINEER WITH
 GRADE SHEETS AND STATIONS OF ALL HOUSE CONNECTIONS AND T-BRANCHES AND SHALL
 PROVIDE STAKES FOR THEM AT THEIR PROPER LOCATIONS WITH STATIONING PLAINLY MARKED.
 ANY CHANGE OF LOCATION SHALL BE REQUESTED IN WRITING BY THE OWNER OR HIS
 REPRESENTATIVE



8742

PROFILE ALIGNMENT AND GRADE OF
SANITARY SEWERS
 TO BE CONSTRUCTED IN
CITRONELL AVENUE
 BETWEEN WASHINGTON BLVD. & NO. LINE OF TR. NR. 1216
LEMORAN AVENUE
 BETWEEN WASHINGTON BLVD. & GOODBEE STREET
GOODBEE STREET
 BETWEEN LEMORAN AND CITRONELL AVENUES
ALLEY
 BETWEEN LEMORAN AVE. & PASSONS BLVD.
 BETWEEN SEWER RIGHT OF WAY
 AND NO. LINE OF TR. NR. 12165
PRIVATE CONTRACT NO. 914
W. S. 36

SHEET ONE OF ONE SHEET

SCALE: VERT. 1\"/>

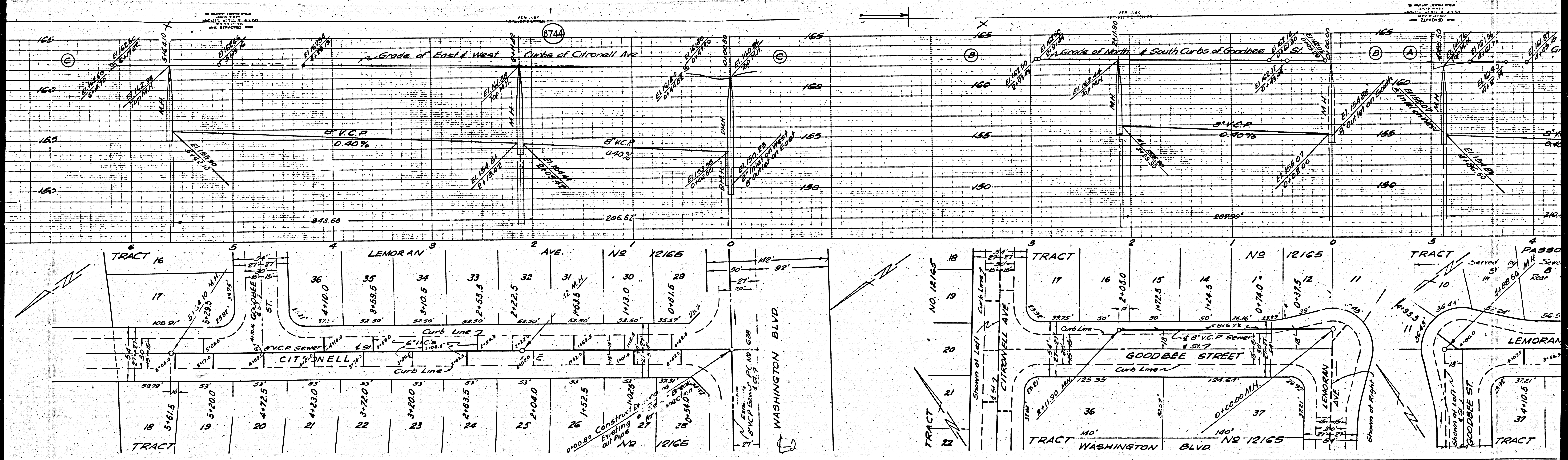
PREPARED IN THE OFFICES OF
KEMMEERER ENG. CO.
 By *John M. Kemmeerer*
 REG. C. E. NO. 272
 RECEIVED
 JAN 20 1949
 FOR LEGEND
 SEE PLAN NO. 8-2-34

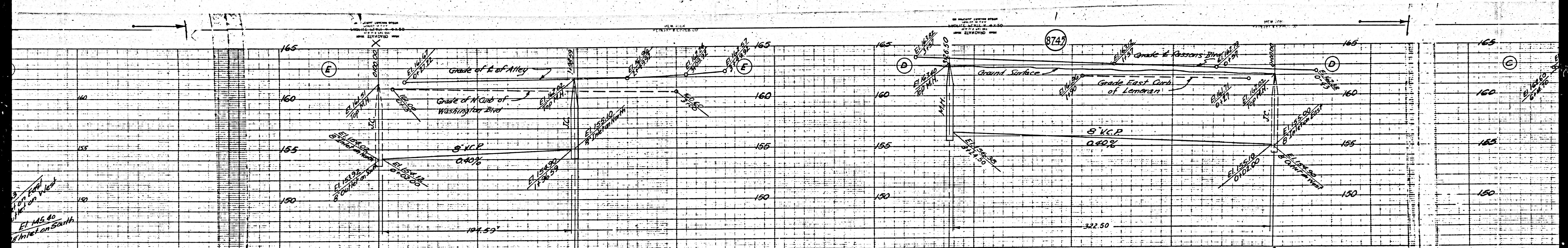
NOTE:
 GRADES TO WHICH THIS IMPROVEMENT IS TO BE CONSTRUCTED ARE SHOWN ON PLAN AND PROFILE.
 GRADE POINTS FOR TOP OF CURB, CENTER LINE OF STREET OR CENTER LINE OF ALLEY ARE SHOWN BY
 CIRCLES ON PROFILES AT ALL POINTS BETWEEN DESIGNATED POINTS THE GRADE SHALL BE ESTABLISHED
 SO AS TO CONFORM TO A STRAIGHT LINE DRAWN BETWEEN SAID DESIGNATED POINTS.
 ELEVATIONS ARE IN FEET ABOVE U. S. G. DATUM OR MEAN SEA LEVEL.
 THIS DRAWING AND THE DATA HEREON ARE HEREBY MADE A PART OF THE SPECIFICATIONS
 WHICH SHALL BE CONSTRUCTED ACCORDING TO SPECIFICATIONS ON FILE IN THE OFFICE OF THE
 COUNTY ENGINEER AND SHALL BE PROSECUTED ONLY IN THE PRESENCE OF THE COUNTY ENGINEER.
 COUNTY STREETS FROM THE L. A. COUNTY ROAD DEPT. 21162 MAIN BRANCH BRANCHING MAKE A DEPOSIT
 WITH THE COUNTY ENGINEER, 700 PABST BUILDING, SUFFICIENT TO COVER THE COST OF
 CONSTRUCTION INSPECTION AND RECORD PLANS.
 IF WORK IS TO BE DONE IN A STATE HIGHWAY, A PERMIT MUST BE OBTAINED FROM THE STATE
 OF CALIFORNIA, DIVISION OF HIGHWAYS, 808 STATE BUILDING, AFTER MAKING THE DEPOSIT WITH THE
 COUNTY ENGINEER.

COUNTY OF LOS ANGELES, CALIFORNIA

REVISED - JAN. 5, 1949
 REVISION CHECKED JAN. 6, 1949 20740
 CHECKED - 3-22-49 - M. L. L...

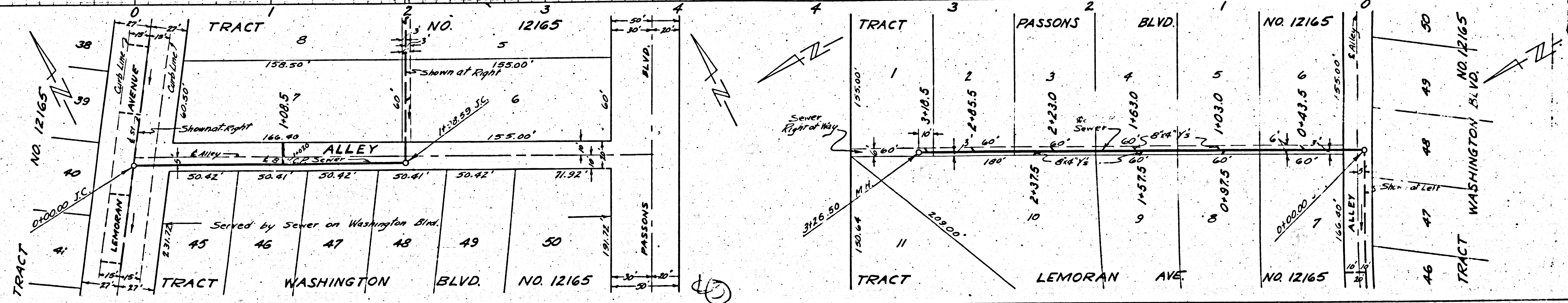
APPROVED *Edmund*
 COUNTY ENGINEER
 APPROVED *John M. Kemmeerer*
 CHIEF ENGINEER OF COUNTY
 SANITATION DISTRICT NO. 2
 CHECKED BY *LOM* Dec. 3, 1948
 OFFICE OF COUNTY ENGINEER, REG. C. E. NO. 6722.





Ex. 18' Downey-Bellflower
Tr. Sewer No. 100-B

Setting of Sewer
1137 Sheet 1
E.J.C.



M5

M6

