

E.M.
 U.S.G.S. 5\"/>

USE STANDARD STRENGTH PIPE EXCEPT AS NOTED
 USE CEMENT MORTAR FOR ALL VITRIFIED CLAY PIPE JOINTS
 ENCASE FOUR FEET OF SEWER AT POINTS OF INTERFERENCE WITH POLES AS PER S. 4113
 CONSTRUCT HOUSE CONNECTIONS WITH INVERT AT PROPERTY LINE 2 FEET BELOW GRADE
 OF 2 OF ALLEY
 ALL STRUCTURES SHALL BE BRICK SEWER STRUCTURES AS PER PLAN NO. S-4-108
 USE STANDARD MANHOLE FRAMES AND COVERS AS PER PLAN NO. S-4-107
 CONSTRUCT TOPS OF ALL STRUCTURES IN RIGHTS OF WAY 1\"/>

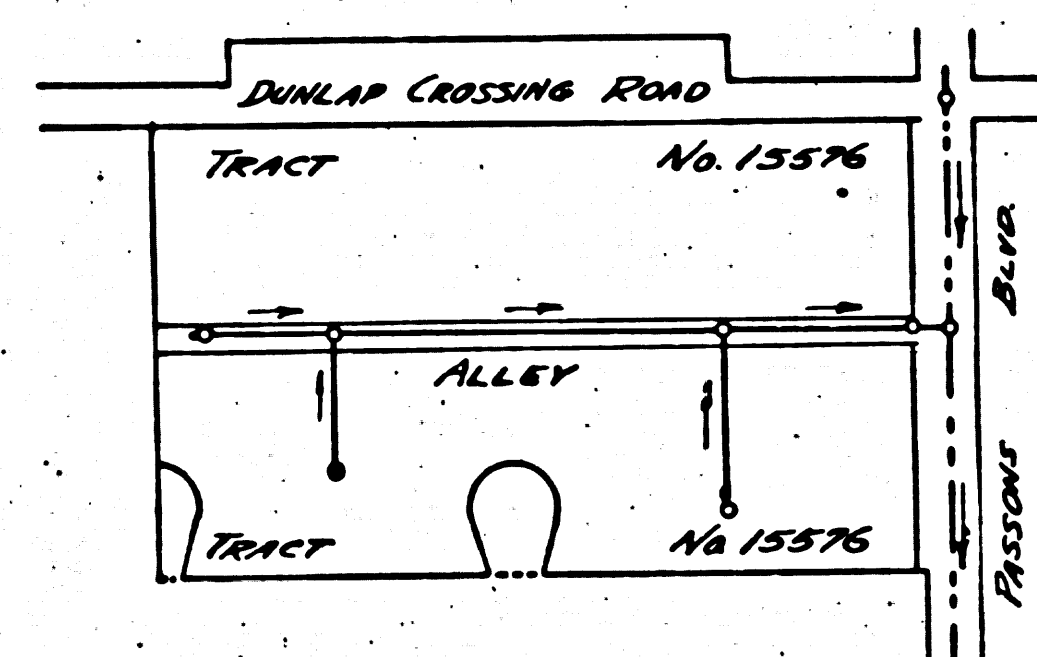
NO REVISIONS SHALL BE MADE IN THESE PLANS WITHOUT APPROVAL OF THE COUNTY ENGINEER
 NO REPRESENTATIVE OF THE COUNTY ENGINEER WILL SURVEY OR LAY OUT ANY PORTION
 OF THE WORK
 THE OWNER OR HIS AUTHORIZED REPRESENTATIVE SHALL FURNISH THE COUNTY ENGINEER WITH
 GRADE SHEETS AND STATIONS OF ALL HOUSE CONNECTIONS AND Y BRANCHES, AND SHALL
 PROVIDE STAKES FOR THEM AT THEIR PROPER LOCATIONS WITH STATIONING PLAINLY MARKED.
 ANY CHANGE OF LOCATION SHALL BE REQUESTED IN WRITING BY THE OWNER OR HIS
 REPRESENTATIVE

PROFILE ALIGNMENT AND GRADE OF
SANITARY SEWERS
 TO BE CONSTRUCTED IN
 ALLEY
 BETWEEN PASSONS BLVD. AND WLY PL. OF Tr. No. 15576
 SEWER RIGHTS-OF-WAY
 BETWEEN ALLEY AND SLY PL. OF TRACT No. 15576

PRIVATE CONTRACT NO. 927
 W. S.
 SHEET ONE OF ONE SHEETS

PREPARED IN THE OFFICES OF
KEMMERER ENG. CO.
 BY *John M. Kemmerer*
 REG. C. E. NO. 1272

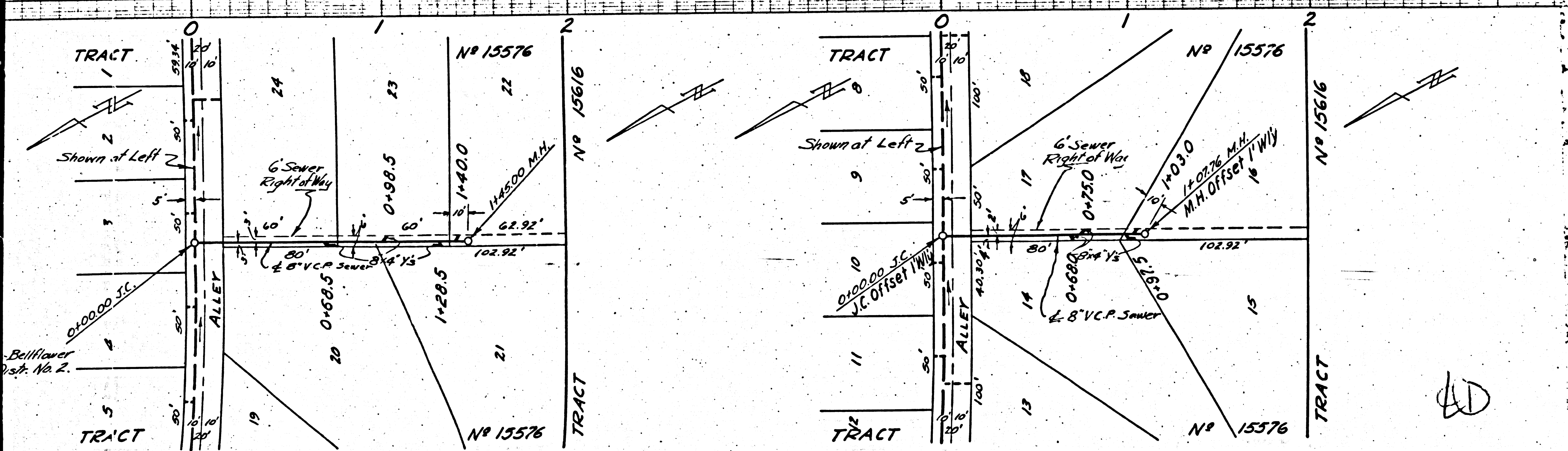
Sanitation District must be notified before work can start.



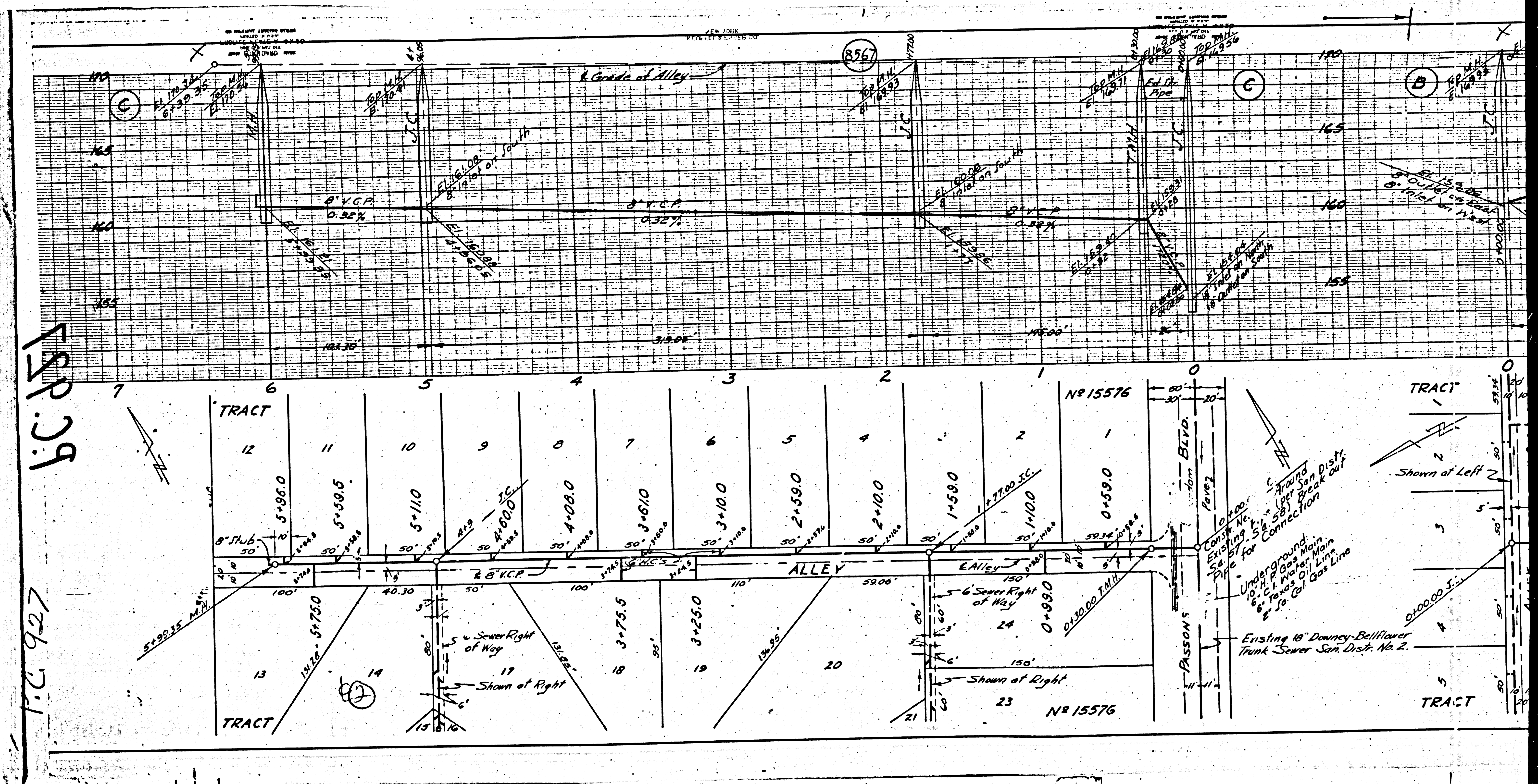
P.C. 927
 INDEX MAP
 Scale: 1" = 200'

NOTE:
 GRADES TO WHICH THIS IMPROVEMENT IS TO BE CONSTRUCTED ARE SHOWN ON PLANS AND PROFILES.
 GRADE POINTS FOR TOP OF CURB, CENTER LINE OF STREET OR CENTER LINE OF ALLEY ARE SHOWN BY
 CIRCLES ON PROFILES. AT ALL POINTS BETWEEN DESIGNATED POINTS THE GRADE SHALL BE ESTABLISHED
 SO AS TO CONFORM TO A STRAIGHT LINE DRAWN BETWEEN SAID DESIGNATED POINTS.
 ELEVATIONS ARE IN FEET ABOVE U. S. S. DATUM OR MEAN SEA LEVEL.
 THIS DRAWING AND THE DATA HEREON ARE HEREBY MADE A PART OF THE SPECIFICATIONS.
 WORK SHALL BE CONSTRUCTED ACCORDING TO SPECIFICATIONS ON FILE IN THE OFFICE OF THE
 COUNTY ENGINEER AND SHALL BE PROSECUTED ONLY IN THE PRESENCE OF THE COUNTY ENGINEER.
 BEFORE WORK CAN BE STARTED, THE CONTRACTOR MUST OBTAIN A PERMIT TO EXCAVATE IN
 COUNTY STREETS FROM THE L. A. COUNTY ROAD DEPT., 700 SQUARE STREET, LOS ANGELES, AND MAKE A DEPOSIT
 WITH THE COUNTY ENGINEER, 700 PARKER LEASE BUILDING, SUFFICIENT TO COVER THE COST OF
 CONSTRUCTION INSPECTION AND RECORD PLANS.
 IF WORK IS TO BE DONE IN A STATE HIGHWAY, A PERMIT MUST BE OBTAINED FROM THE STATE
 OF CALIFORNIA, DIVISION OF HIGHWAYS, 808 STATE BUILDING, AFTER MAKING THE DEPOSIT WITH THE
 COUNTY ENGINEER.

COUNTY OF LOS ANGELES, CALIFORNIA
 APPROVED *John M. Kemmerer* COUNTY ENGINEER
 APPROVED *Carl L. ...* COUNTY ENGINEER
 CHECKED BY *LOMans* Dec 14, 1948
 OFFICE OF COUNTY ENGINEER, REG. C. E. NO. 1272



DC 257



I.C. 851
 T.C. 927

M

M5