

USE STANDARD STRENGTH PIPE EXCEPT AS NOTED
 USE CEMENT MORTAR JOINTS VITRIFIED CLAY PIPE JOINTS
 ENCASE FOUR FEET OF SEWER AT POINTS OF INTERFERENCE WITH POLES AS PER S-4-105
 CONSTRUCT HOUSE CONNECTIONS WITH INVERT AT CURB LINE 5 FEET BELOW CURB GRADE
 EXCEPT AS NOTED
 ALL STRUCTURES SHALL BE MINOR SEWER STRUCTURES AS PER PLAN NO. S-4-104
 USE STANDARD MANHOLE FRAMES AND COVERS AS PER PLAN NO. S-4-107

RESURFACE ALL TRENCHES WITHIN PAVED AREA TO MEET LOS ANGELES COUNTY ROAD DEPT. OR
 STATE HIGHWAY REQUIREMENTS

NO REVISIONS SHALL BE MADE IN THESE PLANS WITHOUT APPROVAL OF THE COUNTY ENGINEER
 NO REPRESENTATIVE OF THE COUNTY ENGINEER WILL SURVEY OR LAY OUT ANY PORTION
 OF THE WORK
 THE OWNER OR HIS AUTHORIZED REPRESENTATIVE SHALL FURNISH THE COUNTY ENGINEER WITH
 GRADE SHEETS AND STATIONS OF ALL HOUSE CONNECTIONS AND Y BRANCHES AND SHALL
 PROVIDE STAKES FOR THEM AT THEIR PROPER LOCATIONS WITH STATIONING PLAINLY MARKED.
 ANY CHANGE OF LOCATION SHALL BE REQUESTED IN WRITING BY THE OWNER OR HIS
 REPRESENTATIVE

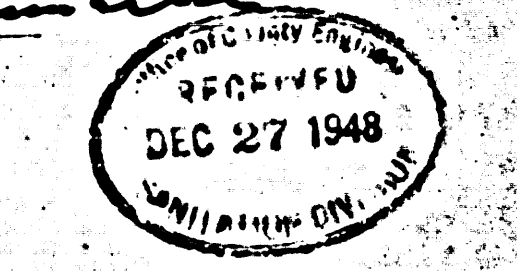
PROFILE ALIGNMENT AND GRADE OF
SANITARY SEWERS
 TO BE CONSTRUCTED IN

COSGROVE STREET
 BETWEEN PASSONS BLVD. AND CITRONELL AVE.

PRIVATE CONTRACT NO. 928
 W. S.
 SHEET ONE OF ONE SHEETS

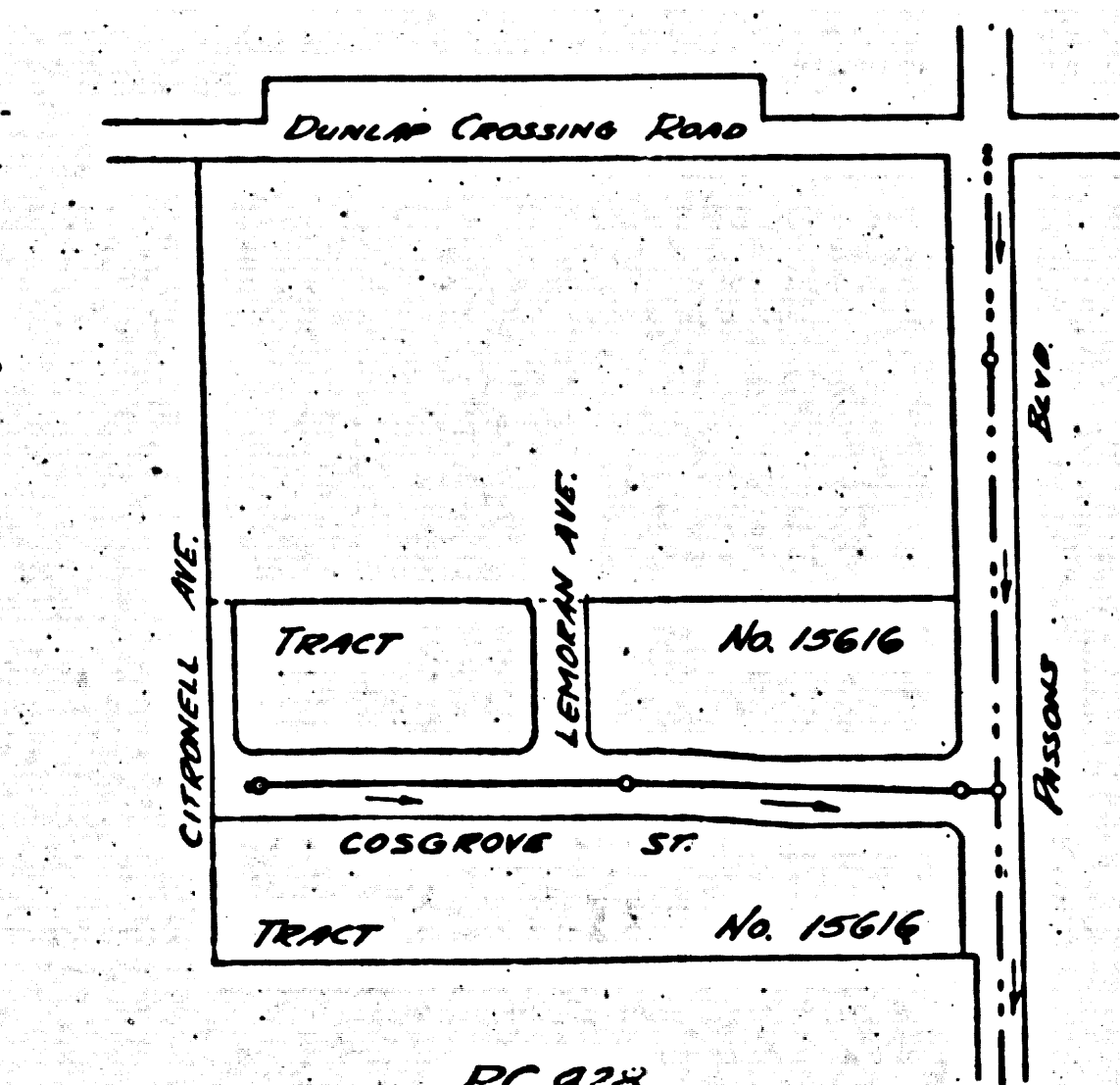
SCALE: VERT. 1"=4'-0"
 HORIZ. 1"=40'-0"

PREPARED IN THE OFFICES OF
KEMMERER ENG. CO.
 BY *John W. Kemmerer*
 REG. C. E. NO. 176



FOR LEGEND
 SEE PLAN NO. S-4-104

Sanitation District must be notified before work can start.



PC.928
 INDEX MAP
 Scale: 1"=200'

NOTE: GRADES TO WHICH THIS IMPROVEMENT IS TO BE CONSTRUCTED ARE SHOWN ON PLANS AND PROFILES.
 GRADE POINTS FOR TOP OF CURB, CENTER LINE OF STREET OR CENTER LINE OF ALLEY ARE SHOWN BY
 CIRCLES ON PROFILES. AT ALL POINTS BETWEEN DESIGNATED POINTS THE GRADE SHALL BE ESTABLISHED
 SO AS TO CONFORM TO A STRAIGHT LINE DRAWN BETWEEN SAID DESIGNATED POINTS.
 ELEVATIONS ARE IN FEET ABOVE U. S. C. & G. DATUM OR MEAN SEA LEVEL.
 THIS DRAWING AND THE DATA HEREON ARE HEREBY MADE A PART OF THE SPECIFICATIONS.
 COUNTY ENGINEER AND SHALL BE PROSECUTED ONLY IN THE PRESENCE OF THE COUNTY ENGINEER.
 BEFORE WORK CAN BE STARTED, THE CONTRACTOR MUST OBTAIN A PERMIT TO EXCAVATE IN
 WITH THE COUNTY ENGINEER, TOO FASHION LEAGUE BUILDING, SUFFICIENT TO COVER THE COST OF
 CONSTRUCTION INSPECTION AND RECORD PLANS.
 IF WORK IS TO BE DONE IN A STATE HIGHWAY, A PERMIT MUST BE OBTAINED FROM THE STATE
 OF CALIFORNIA, DIVISION OF HIGHWAYS, 808 STATE BUILDING, AFTER MAKING THE DEPOSIT WITH THE
 COUNTY ENGINEER.

COUNTY OF LOS ANGELES, CALIFORNIA

APPROVED *Edmund*
 COUNTY ENGINEER

APPROVED *John W. Kemmerer*
 CHIEF ENGINEER OF COUNTY
 SANITATION DISTRICT NO. 2

CHECKED BY *Edmund* Dec. 14, 1948
 OFFICE OF COUNTY ENGINEER, 808 S. W. 432A

Checked - W. Laven - 3-2-49

20