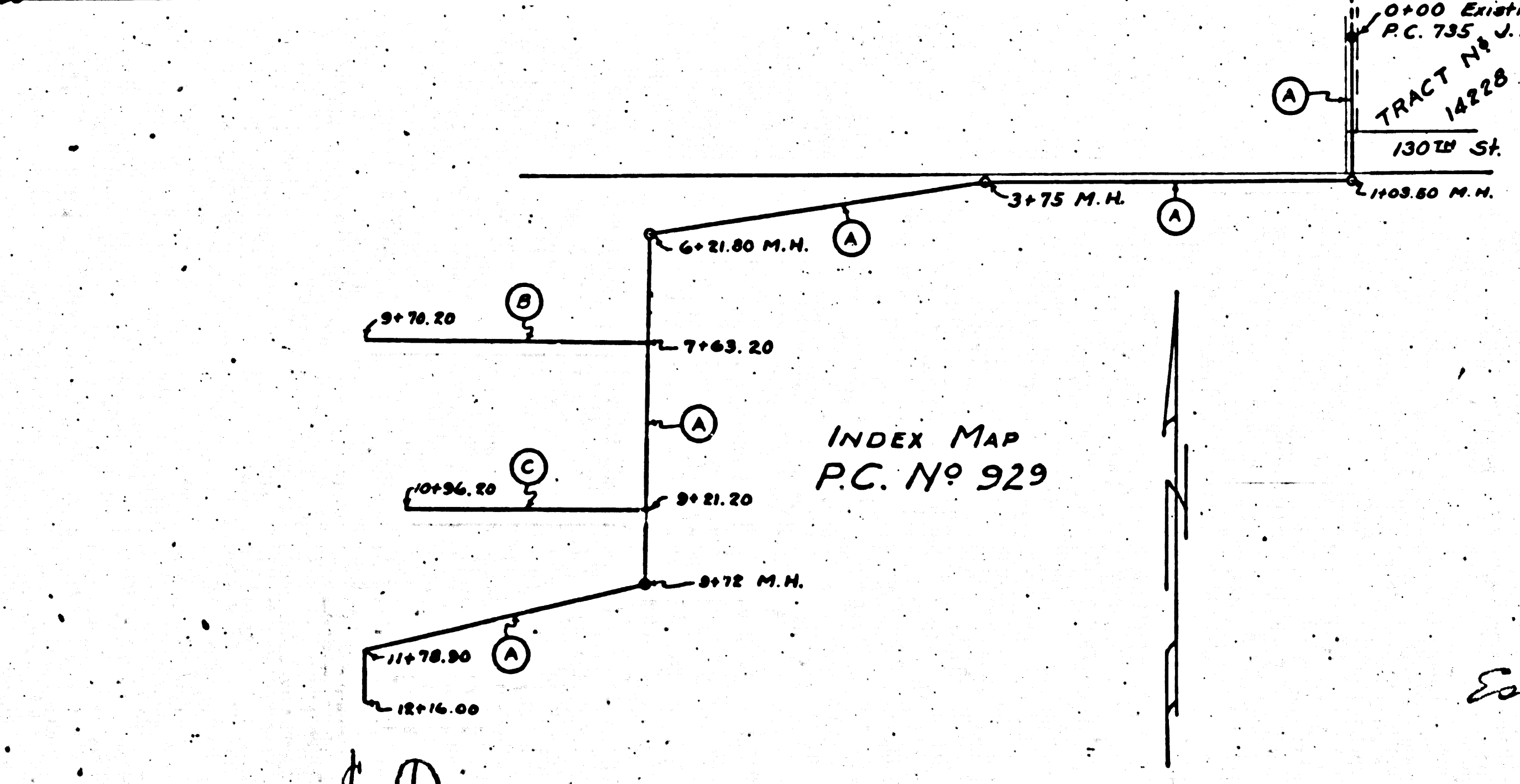
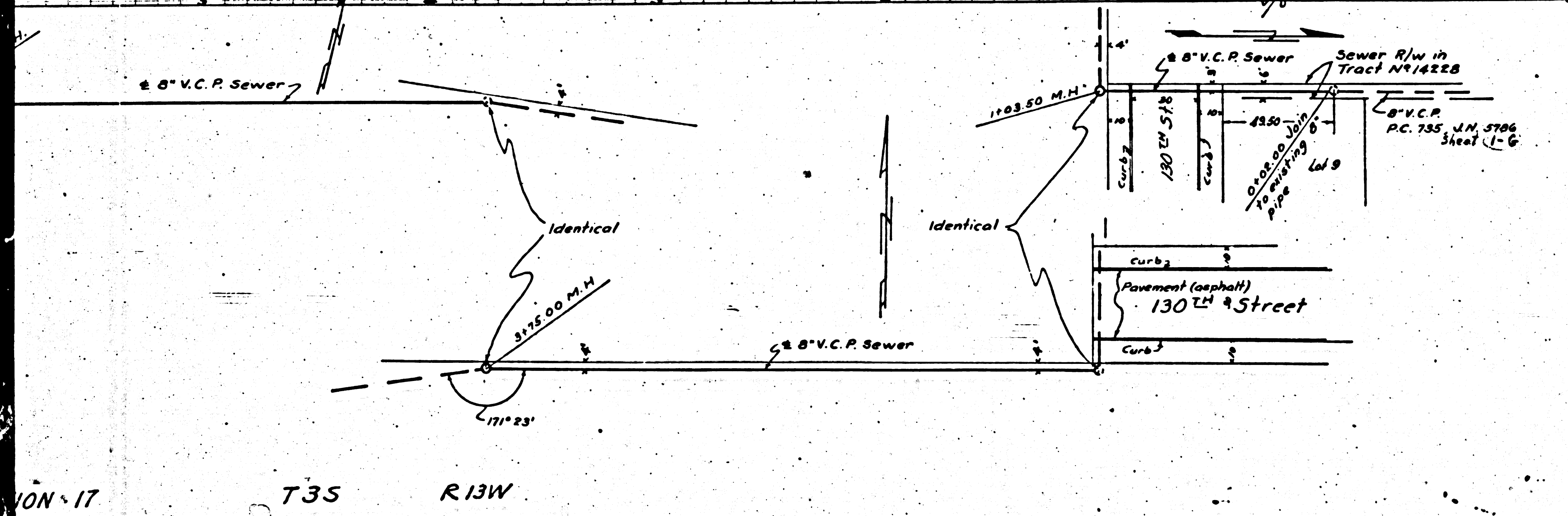


**PROFILE ALIGNMENT AND GRADE OF
SANITARY SEWER
TO BE CONSTRUCTED AT
SALINAS AVENUE SCHOOL
SOUTHWESTERLY OF 130TH STREET**

P.C. N^o 929
W.S. 26
SHEET 1 OF 1 SHEET

- Note:
1. Use standard Manhole Frames and Covers, S-a-117
 2. Use standard strength pipe
 3. Use cement mortar for all vitrified clay pipe joints
 4. Slope all trench within paved area to meet Los Angeles County Flood Dept. requirements
 5. All structures shall be brick sewer structures, S-a-108
 6. Use E.P.A. No. 2 joint compound for all vitrified clay pipe joints

Note: No representative of the County Engineer will survey or lay out any portion of the work. The owner or his authorized representative shall furnish the County Engineer with grade stakes and stations of all existing structures, and shall provide any other data necessary for the work. Any change of location shall be reported in writing by the owner or his representative. No revision shall be made in these plans without approval of the County Engineer.

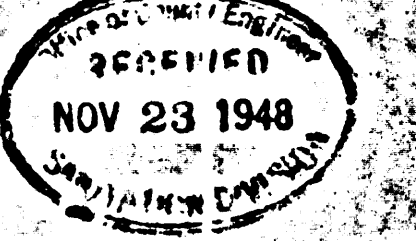


PREPARED BY Leon W. Moore RE. 3157
For Legend See Plan N^o S-a-64

Note:

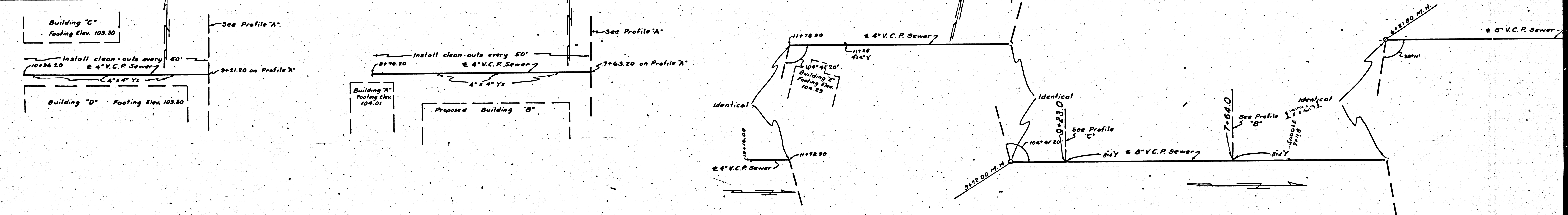
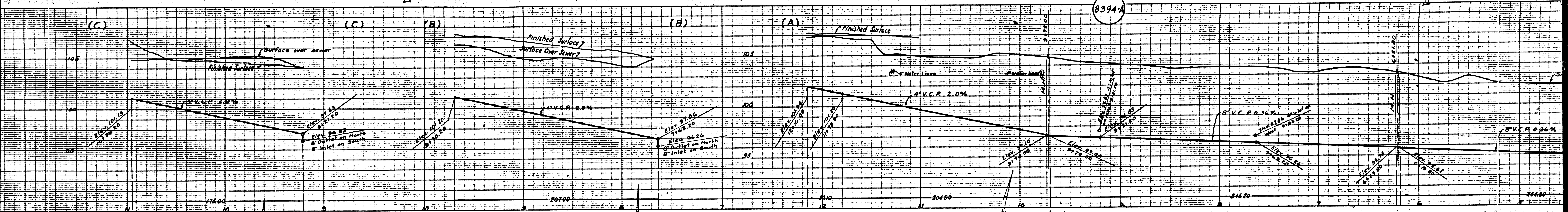
1. Grades to which this improvement is to be constructed are shown on plan and profile.
2. Grade points for top of curb, centerline of streets, or centerline of alley are shown by circles on profile. At all points between designated points the grade shall be established as to conform to a straight line drawn between said designated points.
3. This drawing and the data hereon are hereby made a part of the specifications.
4. Work shall be constructed according to specifications on file in the Office of the County Engineer.
5. Before work can be started the contractor must obtain a permit to occupy in County Streets from the Los Angeles County Rd. Dept., 211 S. Main St., and make a deposit with the County Engineer, 700 Fashion League Bldg., sufficient to cover costs of inspection and record plans.

Approved by Charles County Engineer
Approved by J. P. ... Office Engineer
For Chief Engineer of County Sanitation Dist. No. 1
Checked by J. O. ... Office of the County Engineer
Date Dec. 15, 1948
Approved for the collection of liquid industrial waste
Arthur ... Industrial Waste Engineer, Office of the County Engineer
Date 11/5/48



ION-17 T35 R13W

NEW YORK KEENE & EPPEN CO. NEW YORK KEENE & EPPEN CO. NEW YORK KEENE & EPPEN CO. NEW YORK KEENE & EPPEN CO.



PORTION OF SE 1/4 OF NE 1/4 OF SECTION 17

PC 929

M5

M5