

USE EXTRA STRENGTH PIPE
 USE CEMENT MORTAR FOR ALL VITRIFIED CLAY PIPE JOINTS
 ENCASE FOUR FEET OF SEWER AT POINTS OF INTERFERENCE WITH POLES AS PER S-8-119

ALL STRUCTURES SHALL BE BRICK SEWER STRUCTURES AS PER PLAN NO. S-8-104
 USE STANDARD MANHOLE FRAMES AND COVERS AS PER PLAN NO. S-8-117

RESURFACE ALL TRENCHES WITHIN PAVED AREA TO MEET LOS ANGELES COUNTY ROAD DEPT REQUIREMENTS
 HOUSE CONNECTION TO BE CONSTRUCTED ON 1/4" RISE PER FOOT TO PROPERTY LINE

NO REVISIONS SHALL BE MADE IN THESE PLANS WITHOUT APPROVAL OF THE COUNTY ENGINEER
 NO REPRESENTATIVE OF THE COUNTY ENGINEER WILL SURVEY OR LAY OUT ANY PORTION OF THE WORK
 THE OWNER OR HIS AUTHORIZED REPRESENTATIVE SHALL FURNISH THE COUNTY ENGINEER WITH GRADE SHEETS AND STATIONS OF ALL HOUSE CONNECTIONS AND Y BRANCHES, AND SHALL PROVIDE STAKES FOR THEM AT THEIR PROPER LOCATIONS WITH STATIONING PLAINLY MARKED
 ANY CHANGE OF LOCATION SHALL BE REQUESTED IN WRITING BY THE OWNER OR HIS REPRESENTATIVE.

NOTE
 BEFORE ANY CONNECTIONS FOR THE DISPOSAL OF LIQUID INDUSTRIAL WASTE IS TO BE MADE TO THIS SEWER, DETAILED PLANS MUST BE SUBMITTED TO AND A PERMIT SECURED FROM THE COUNTY ENGINEER.

NOTE
 SANITATION DISTRICT MUST BE NOTIFIED BEFORE WORK CAN START.

PROFILE, ALIGNMENT AND GRADE OF
SANITARY SEWERS
 TO BE CONSTRUCTED IN
 SANITARY SEWER RIGHT OF WAY
CANNING STREET
 FROM
 EXISTING 21" TRUNK SEWER IN GARFIELD AVE.
 EXTENDING WESTERLY 700 FEET

PRIVATE CONTRACT NO. 940
 W. S. 36

SCALE 1" = 100'
 HORIZ. 1" = 50'

NOVEMBER 1948

PREPARED IN THE OFFICES OF
CENTRAL MANUFACTURING DISTRICT, INC.

BY *Kenneth E. Bell*
 H.C. 11 NO 7022

FOR LEGEND
 SEE PLAN NO. S-8-64

NOTE:-
 GRADES TO WHICH THIS IMPROVEMENT IS TO BE CONSTRUCTED ARE SHOWN ON PLANS AND PROFILES
 GRADE POINTS FOR TOP OF CURB, CENTER LINE OF STREET OR CENTER LINE OF ALLEY ARE SHOWN BY
 CIRCLES ON PROFILES AT ALL POINTS BETWEEN DESIGNATED POINTS. THE GRADE SHALL BE ESTABLISHED
 50 FEET TO CORNER TO A STRAIGHT LINE DRAWN BETWEEN SAID DESIGNATED POINTS.
 ELEVATIONS ARE IN FEET ABOVE U. S. D. S. DATUM OR MEAN SEA LEVEL.
 THE DRAWING AND THE DATA HEREON ARE HEREBY MADE A PART OF THE SPECIFICATIONS
 WHICH SHALL BE CONSTRUCTED ACCORDING TO SPECIFICATIONS ON FILE IN THE OFFICE OF THE
 COUNTY ENGINEER AND SHALL BE PROSECUTED ONLY IN THE PRESENCE OF THE COUNTY ENGINEER
 BEFORE WORK CAN BE STARTED. THE CONTRACTOR MUST OBTAIN A PERMIT TO EXCAVATE IN
 COUNTY STREETS FROM THE L. A. COUNTY ROAD DEPT. 211 SOUTH MAIN STREET AND MAKE A DEPOSIT
 WITH THE COUNTY ENGINEER, 700 UNION LEAGUE BUILDING, SUFFICIENT TO COVER THE COST OF
 CONSTRUCTION INSPECTION AND RECORD PLANS.

COUNTY OF LOS ANGELES, CALIFORNIA

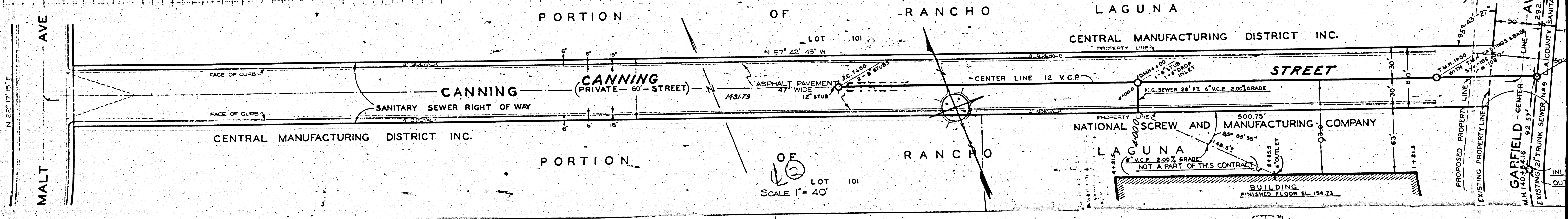
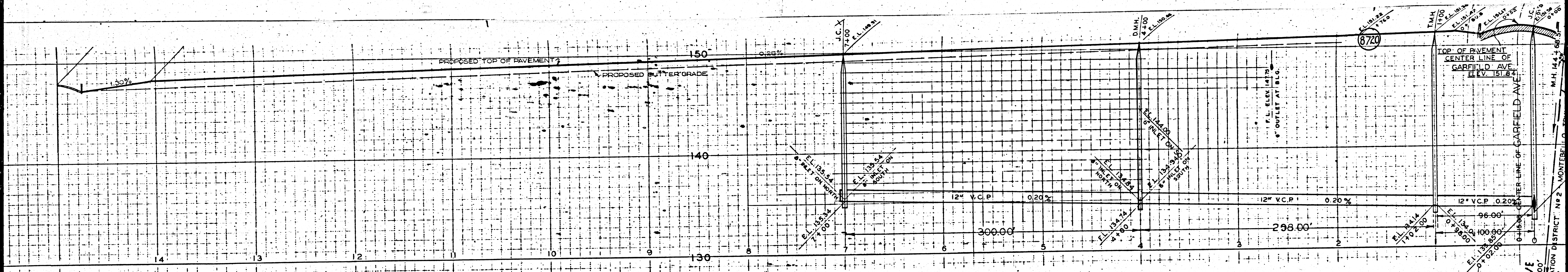
APPROVED *Kenneth E. Bell* COUNTY ENGINEER

APPROVED *C. E. Arnold* CHIEF ENGINEER OF COUNTY SANITATION DISTRICT NO. 2

CHECKED BY *Tommy* Dec 6, 1948
 OFFICE OF COUNTY ENGINEER 222 C. E. BLDG. 2322

deals - 14" line - 3-18-49

DUNN



LOT 101
SCALE 1" = 40'

MALT AVE
N 22° 17' 15" E

GARFIELD AVE
M 140° 32' 16" 92.57'
EXISTING 21" TRUNK SEWER No 9
A COUNTY SANITATION DISTRICT No 2

PORTION OF RANCHO LAGUNA
CENTRAL MANUFACTURING DISTRICT INC.
CANNING (PRIVATE - 60' STREET)
SANITARY SEWER RIGHT OF WAY
FACE OF CURB
ASPHALT PAVEMENT 47' WIDE
12' STUB
CENTER LINE 12" V.C.P.
NATIONAL SCREW AND MANUFACTURING COMPANY
LAGUNA
500.75'
6" V.C.P. 2.00% GRADE
NOT A PART OF THIS CONTRACT
BUILDING
FINISHED FLOOR EL. 154.73
PROPOSED PROPERTY LINE
EXISTING PROPERTY LINE
GARFIELD CENTER LINE
M 140° 32' 16" 92.57'
EXISTING 21" TRUNK SEWER No 9
A COUNTY SANITATION DISTRICT No 2

PC 940

③

