

- BENCH MARK '11' A.B. 6047-01**
 ELEV. 184.33' - LOW POINT
 IN S.E. 1/4 E. CORNER QUARTER
 1/4 SEC. 13 T. 2 N. R. 10 W.
- (1) USE STANDARD MANHOLE FRAMES AND COVERS (1.0-11)
 - (2) USE STANDARD STRENGTH PIPE (EXCEPT AS NOTED)
 - (3) USE CEMENT MORTAR FOR ALL VITRIFIED CLAY PIPE JOINTS
 - (4) CONFORM WITH SANITATION DEPARTMENT OF PROPERTY LINE (5) FREE BELOW CURB GRADE (EXCEPT AS NOTED)
 - (5) ALL STRUCTURE SHALL BE BRICK SEWER STRUCTURE (1.0-11)
 - (6) RESURFACE ALL TRENCH WITHIN PAVED AREA TO MEET LOS ANGELES COUNTY ROAD DEPT. REQUIREMENTS.

NOTE: NO REPRESENTATIVE OF THE COUNTY ENGINEER WILL VERIFY OR SIGN ANY PORTION OF THIS DRAWING UNLESS THE ENGINEER OR HIS AUTHORIZED REPRESENTATIVE SHALL FURNISH THE COUNTY ENGINEER WITH BEARING SURVEYS AND STATIONS OF ALL TOWNSHIP AND SMALL PARCELS AFFECTED FOR THE PURPOSE OF THIS DRAWING. LOCATION DATA AND SMALL PARCELS AFFECTED FOR THE PURPOSE OF THIS DRAWING SHALL BE REQUIRED BY THE ENGINEER OR HIS REPRESENTATIVE. NO REVISION SHALL BE MADE IN THIS DRAWING WITHOUT APPROVAL OF THE COUNTY ENGINEER.

SEE SHEET 2 FOR INDEX MAP

PROFILE, ALIGNMENT AND GRADE OF
SANITARY SEWERS
 TO BE CONSTRUCTED IN
 HARRELL STREET
 BETWEEN DURFER AVENUE AND SANDOVAL AVENUE
 SANDOVAL AVENUE
 BETWEEN HARRELL STREET AND SANTA ROAD
 WARRINGTON AVENUE
 BETWEEN HARRELL STREET AND SANTA ROAD
 CHAPPELLE AVENUE
 BETWEEN HARRELL STREET AND SANTA ROAD
 GANDEL AVENUE
 BETWEEN HARRELL STREET AND VAN AKEN STREET
 VAN AKEN STREET
 BETWEEN GANDEL AVENUE AND WARRINGTON AVENUE
 WARRINGTON AVENUE
 BETWEEN VAN AKEN STREET AND SANTA ROAD
 SANTA ROAD
 BETWEEN GANDEL AVENUE AND WARRINGTON AVE

PRIVATE CONTRACT NO. 955
 W.S. 37 DECEMBER 1948
 SHEET 1 OF 2 SHEETS
 PREPARED IN THE OFFICE OF
HAROLD A. BARNETT
 BY Harold A. Barnett
 CIVIL ENGINEER

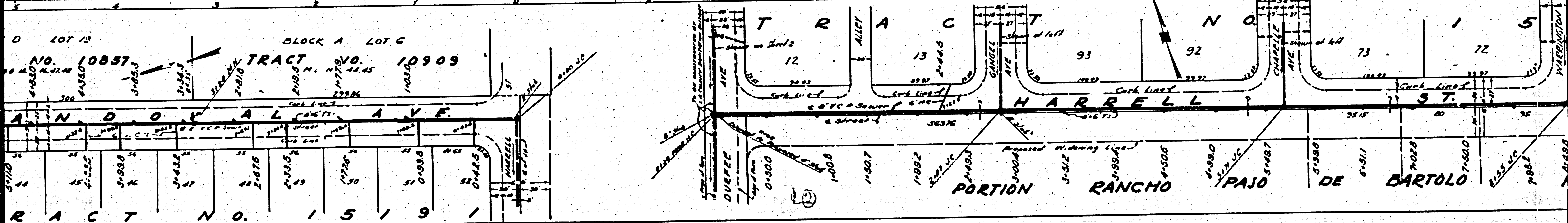
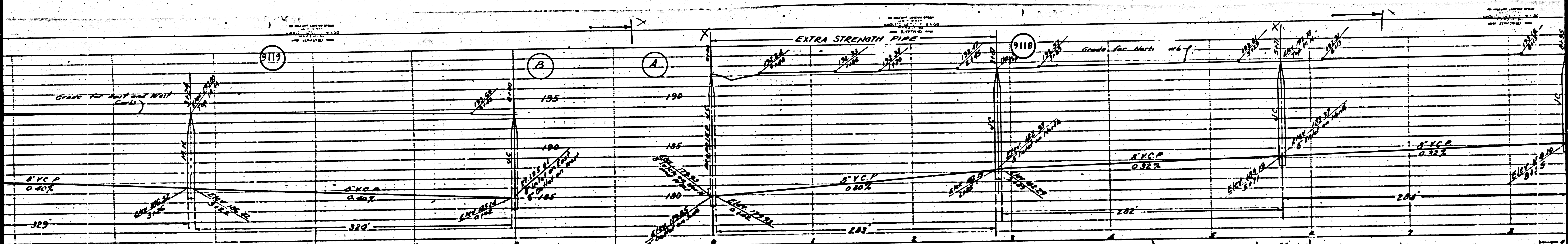
FOR LEGEND
 SEE PLAN NO. 3-130

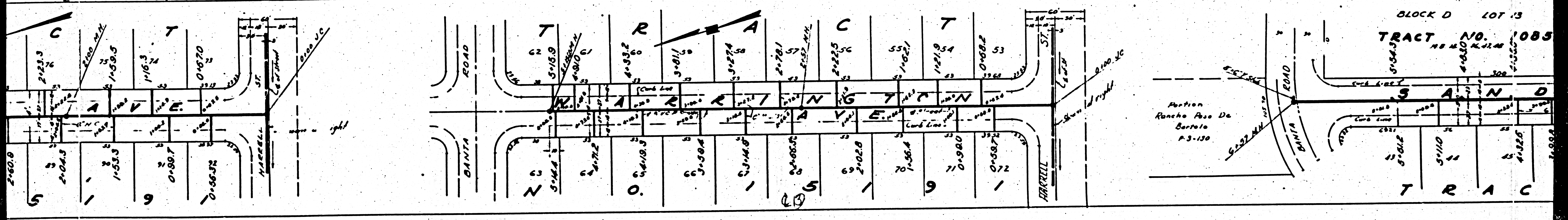
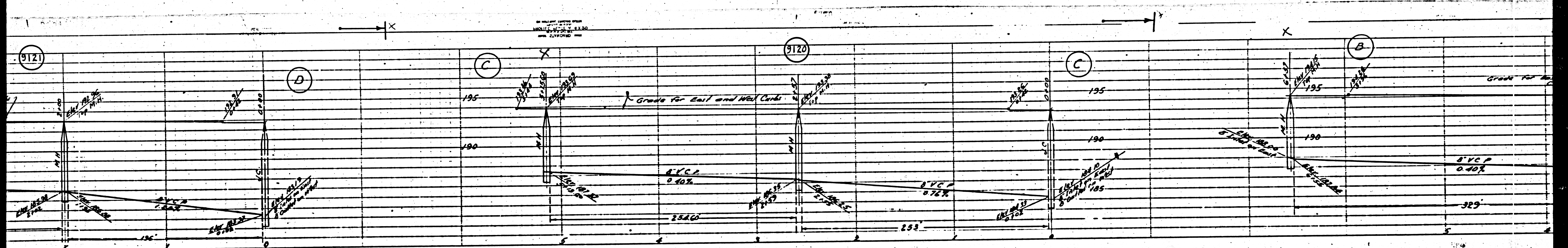
NOTE: THIS IMPROVEMENT IS TO BE CONSTRUCTED AND MAINTAINED AS SHOWN ON THESE PLANS AND PROFILE GRADES TO WHICH THE ELEVATIONS ARE GIVEN. THE GRADES SHALL BE ESTABLISHED BY CURBS OR OTHERWISE AS SHOWN ON THESE PLANS. THE GRADES SHALL BE ESTABLISHED BY CURBS OR OTHERWISE AS SHOWN ON THESE PLANS. THE GRADES SHALL BE ESTABLISHED BY CURBS OR OTHERWISE AS SHOWN ON THESE PLANS.

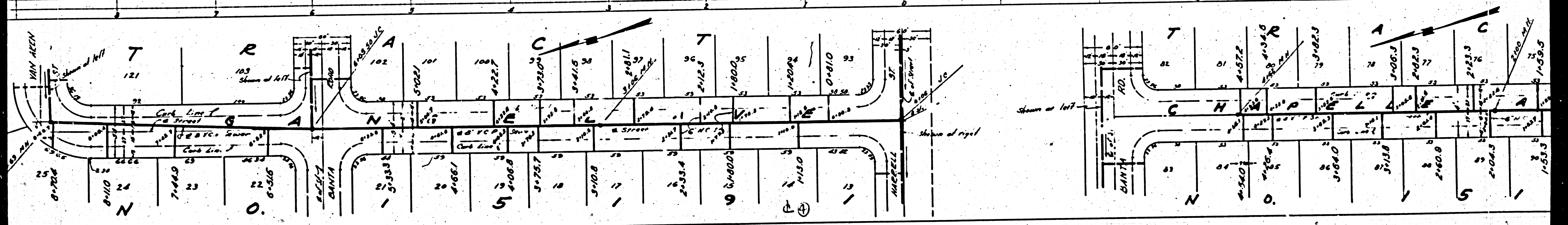
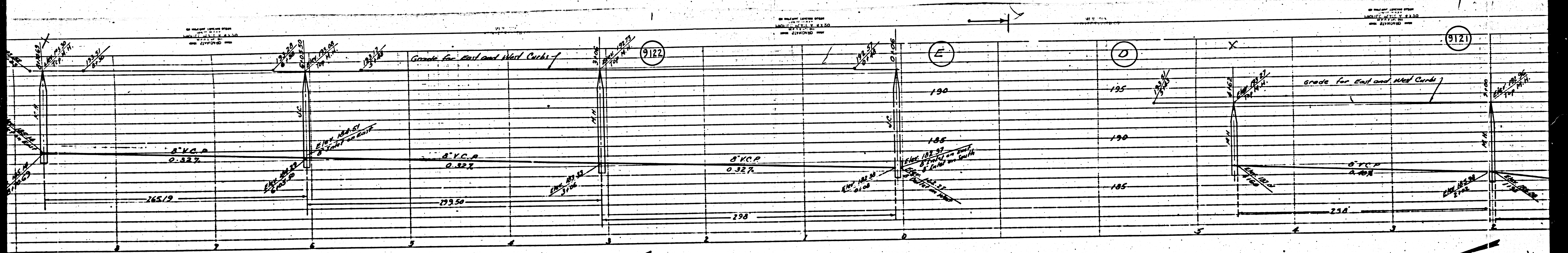
DRWG. NO. 5444-1

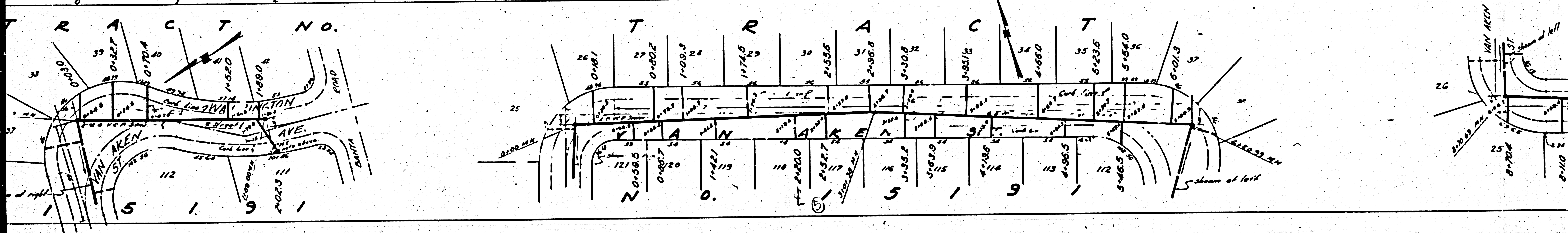
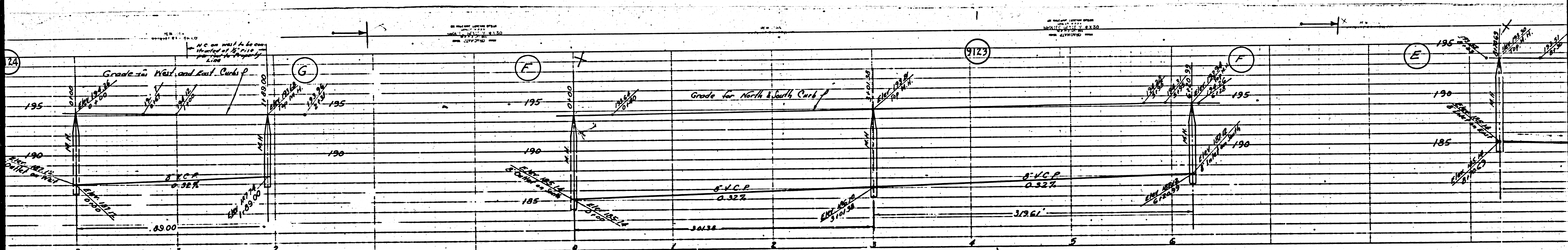
TRIM LINE

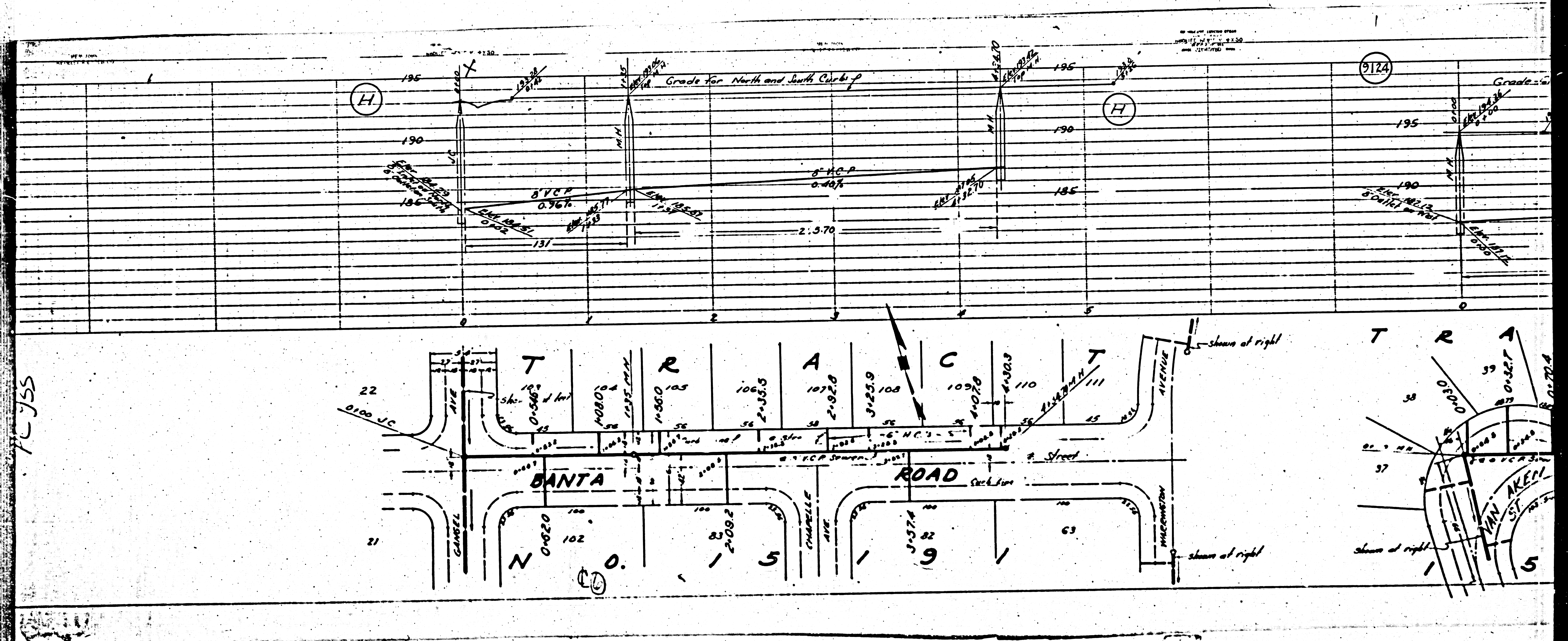
022

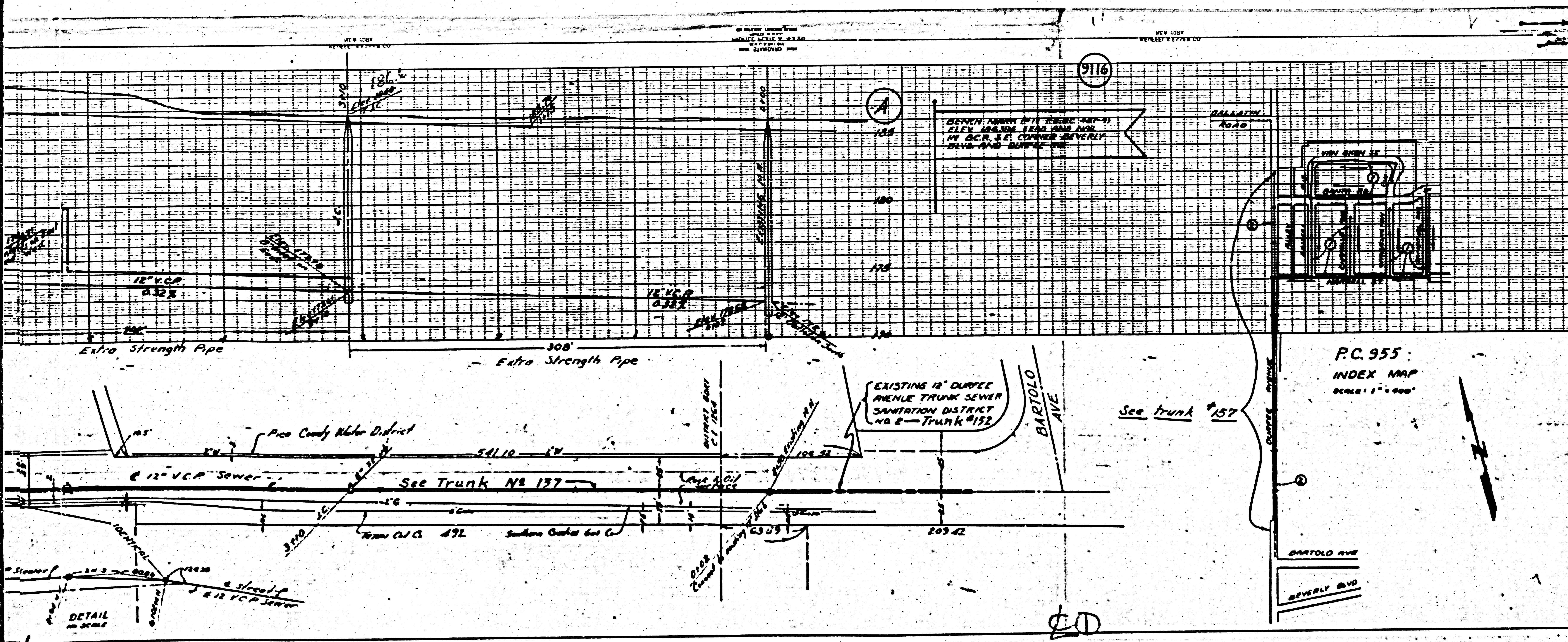




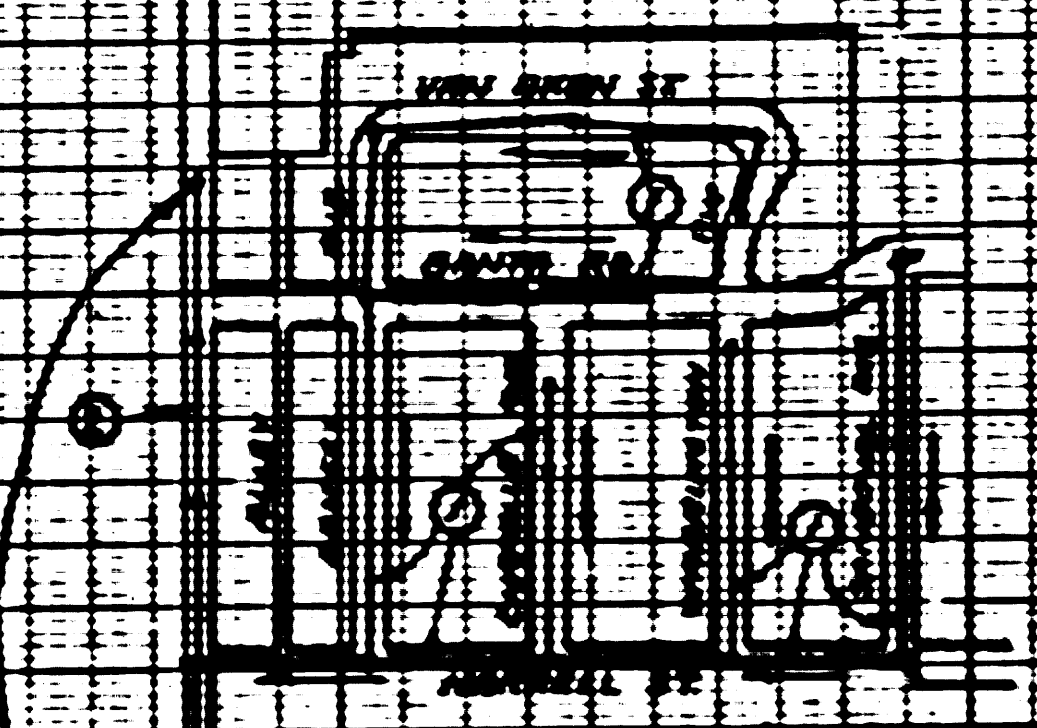








EXISTING 12" DURFEE AVENUE TRUNK SEWER SANITATION DISTRICT NO. 2 - TRUNK #152

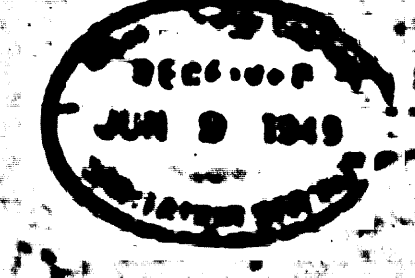


P.C. 955
INDEX MAP
SCALE: 1" = 500'

SANITARY SEWERS
TO BE CONSTRUCTED IN
DURFEE AVENUE

PRIVATE CONTRACT NO. 5444
SHEET 2 OF 2 SHEETS
PREPARED IN THE OFFICE OF THE CHIEF ENGINEER OF COUNTY SANITATION DISTRICT NO. 2

FOR CONSTRUCTION NOTES



COUNTY OF LOS ANGELES, CALIF.

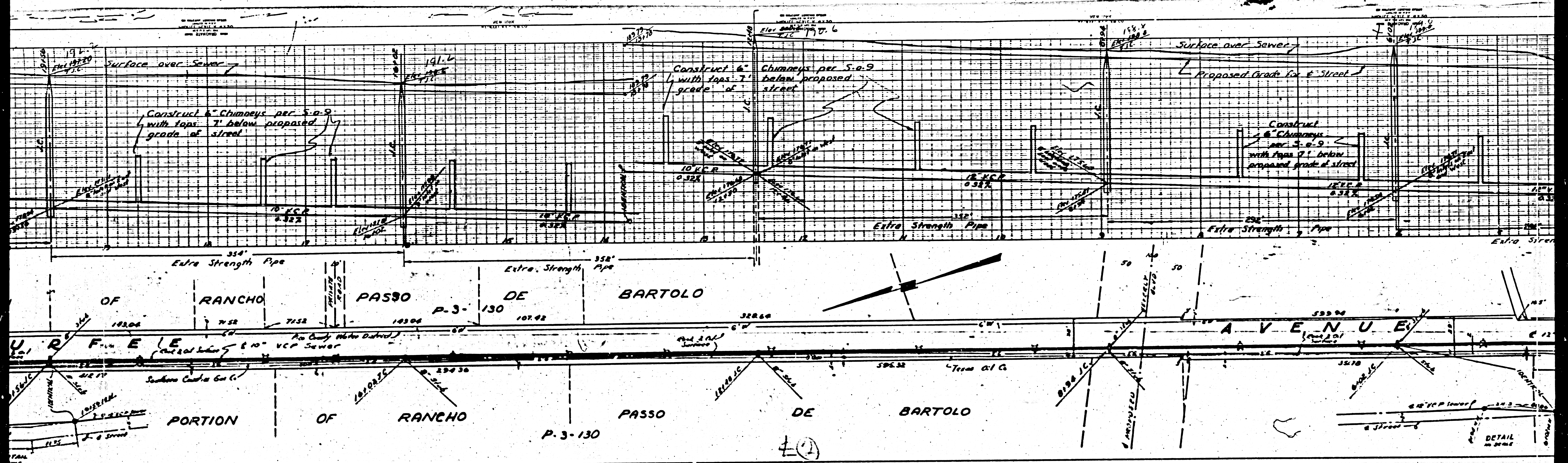
APPROVED: [Signature]
COUNTY ENGINEER

APPROVED: [Signature]
CHIEF ENGINEER OF COUNTY SANITATION DISTRICT NO. 2

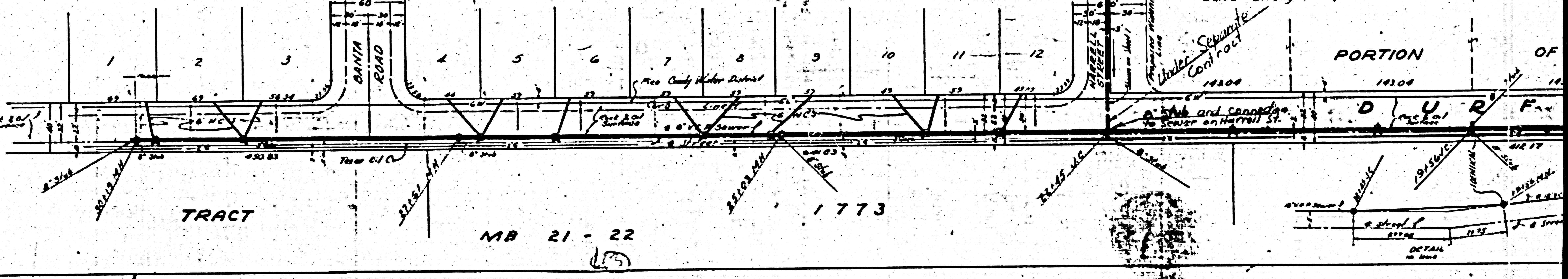
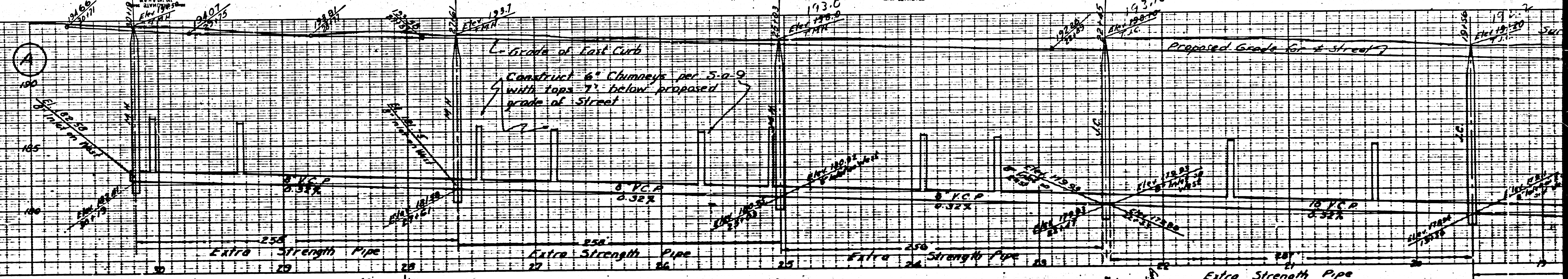
DWG. NO. 5444-2

CHECKED BY: [Signature]
OFFICE OF COUNTY SANITATION DISTRICT NO. 2

TRIM LINE



TRIM LINE



TRACT

MB 21 - 22

1773

PORTION OF

D U R

TRIM LINE