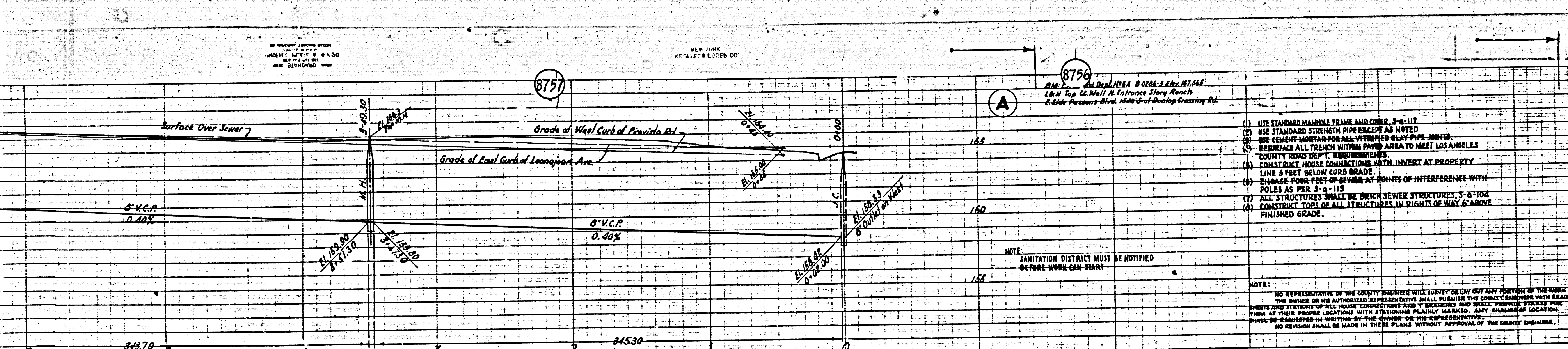


M3

M3



**PROFILE, ALIGNMENT AND GRADE OF
SANITARY SEWERS
TO BE CONSTRUCTED IN
SANITARY SEWER RIGHTS OF WAY
IN TRACT NO 15667**

PRIVATE CONTRACT NO 963
W.S. 36

SHEET 1 OF 2 SHEETS
PREPARED IN THE OFFICE OF LEONARD H. HOWDY

BY: *Leonard H. Howdy*
REGISTERED CIVIL ENGINEER IN 1923

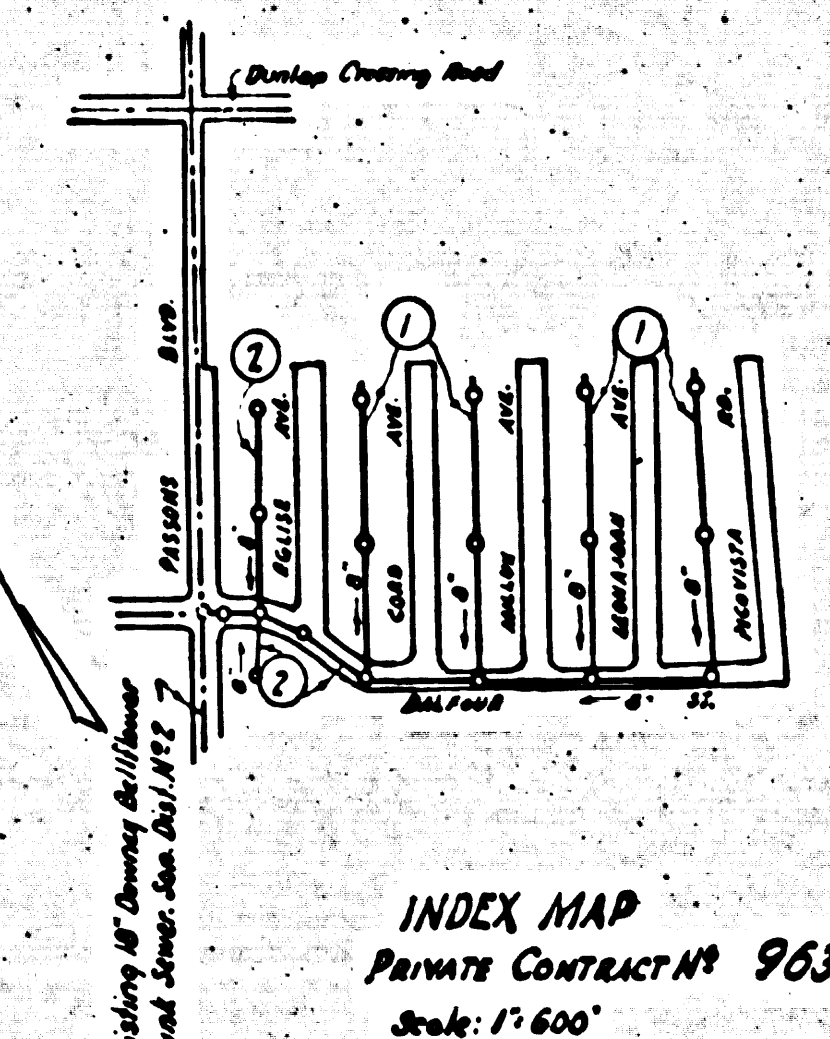
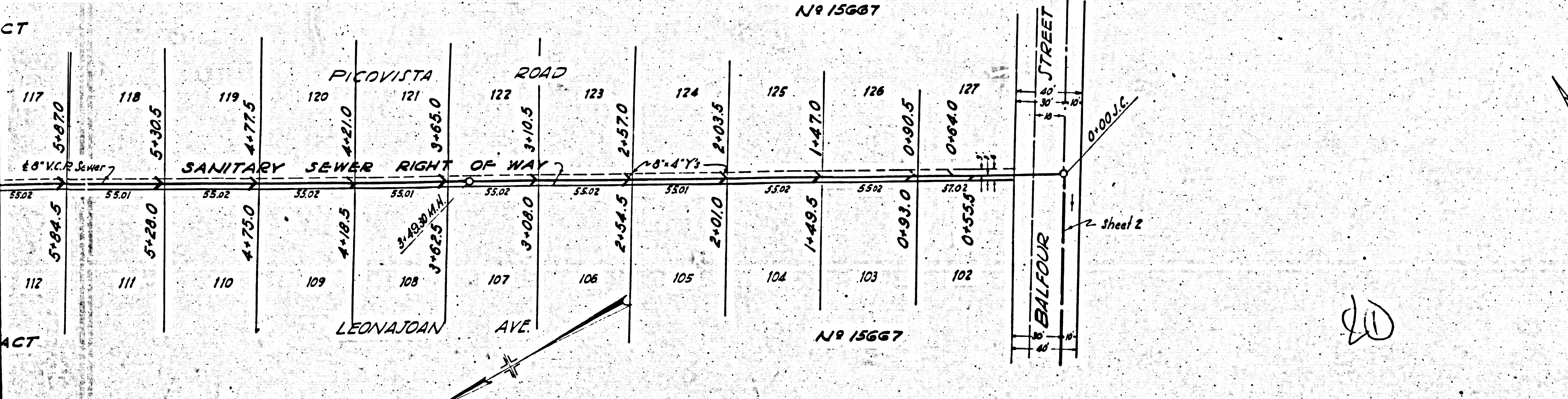
SCALE: V.P. 1" = 4'
HOR. 1" = 40'

JANUARY 1949

FOR LEGEND
SEE PLAN NO 3064

NOTE:
GRADES TO WHICH THIS IMPROVEMENT IS TO BE CONSTRUCTED ARE SHOWN ON PLANS AND PROFILES. GRADE POINTS FOR TOP OF CURB, CENTER LINE OF STREET OR CENTER LINE OF ALLEY ARE SHOWN BY CIRCLES ON PROFILES. AT ALL POINTS BETWEEN DESIGNATED POINTS THE GRADE SHALL BE ESTABLISHED SO AS TO CONFORM TO A STRAIGHT LINE DRAWN BETWEEN SAID DESIGNATED POINTS. ELEVATIONS ARE IN FEET ABOVE U.S.C. & G.S. DATUM OR MEAN SEA LEVEL. THIS DRAWING AND THE DATA HEREON ARE HEREBY MADE A PART OF THE SPECIFICATIONS. WORK SHALL BE CONSTRUCTED ACCORDING TO SPECIFICATIONS ON FILE IN THE OFFICE OF THE COUNTY ENGINEER AND SHALL BE PROSECUTED ONLY IN THE PRESENCE OF THE COUNTY ENGINEER. BEFORE WORK CAN BE STARTED, THE CONTRACTOR MUST OBTAIN A PERMIT TO EXCAVATE IN COUNTY STREETS FROM THE L.A. COUNTY ROAD DEPT., 211 SOUTH MAIN ST., AND MAKE A DEPOSIT WITH THE COUNTY ENGINEER, 700 FASHION LEAGUE BUILDING, SUFFICIENT TO COVER THE COST OF CONSTRUCTION INSPECTION AND RECORD PLANS.

- (1) USE STANDARD MANHOLE FRAME AND COVER, 24" x 17"
 - (2) USE STANDARD STRENGTH PIPE EXCEPT AS NOTED
 - (3) USE RESHUNT MORTAR FOR ALL VITRIFIED CLAY PIPE JOINTS
 - (4) RESURFACE ALL TRENCH WITH PAVED AREA TO MEET LOS ANGELES COUNTY ROAD DEPT. REQUIREMENTS
 - (5) CONSTRUCT HOUSE CONNECTIONS WITH INVERT AT PROPERTY LINE 5 FEET BELOW CURB GRADE
 - (6) ENCASE FOUR FEET OF SEWER AT POINTS OF INTERFERENCE WITH POLES AS PER S-115
 - (7) ALL STRUCTURES SHALL BE BRICK SEWER STRUCTURES, 3'-6" DIA
 - (8) CONSTRUCT TOPS OF ALL STRUCTURES IN RIGHTS OF WAY 2' ABOVE FINISHED GRADE.
- NOTE:
SANITATION DISTRICT MUST BE NOTIFIED BEFORE WORK CAN START
- NOTE:
NO REPRESENTATIVE OF THE COUNTY ENGINEER WILL LOAN OR LAY OUT ANY PORTION OF THE WORK. THE OWNER OR HIS AUTHORIZED REPRESENTATIVE SHALL FURNISH THE COUNTY ENGINEER WITH GRADE POINTS AND STATIONING OF PROPOSED CONSTRUCTION TO BE ACCURATELY AND TRULY LOCATED. ALL CHANGES OF LOCATION SHALL BE INDICATED BY WHITTAKER BY THE OWNER OR HIS REPRESENTATIVE. NO REVISION SHALL BE MADE IN THESE PLANS WITHOUT APPROVAL OF THE COUNTY ENGINEER.



COUNTY OF LOS ANGELES, CALIFORNIA

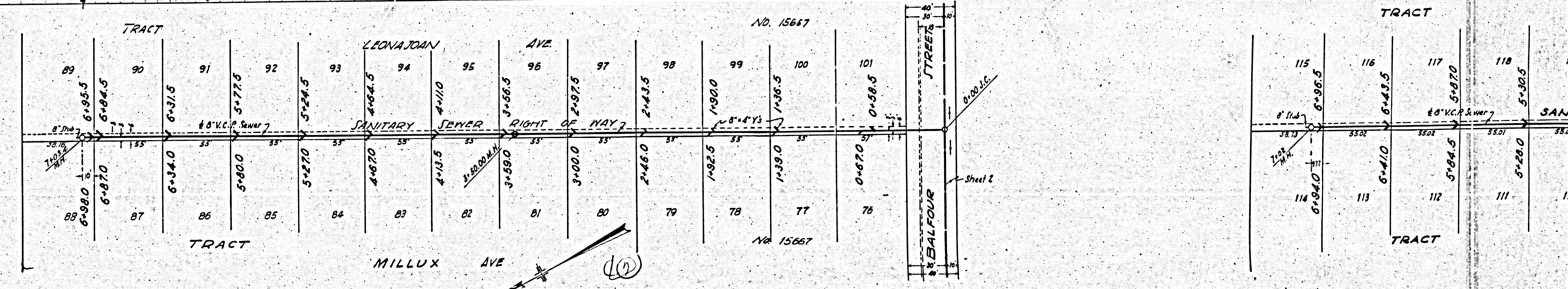
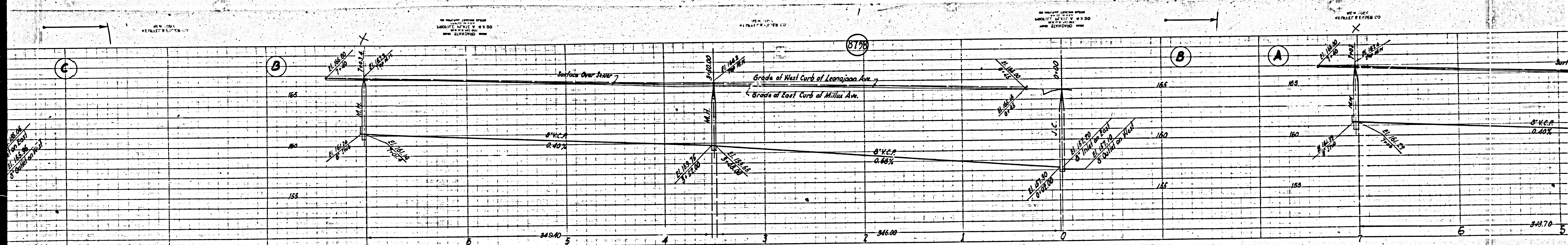
APPROVED: *[Signature]*
COUNTY ENGINEER

APPROVED: *[Signature]*
SANITATION DISTRICT NO. 2

CHECKED BY: *[Signature]* FEB 25, 1949
OFFICE OF COUNTY ENGINEER, ROOM 211, S. MAIN ST.

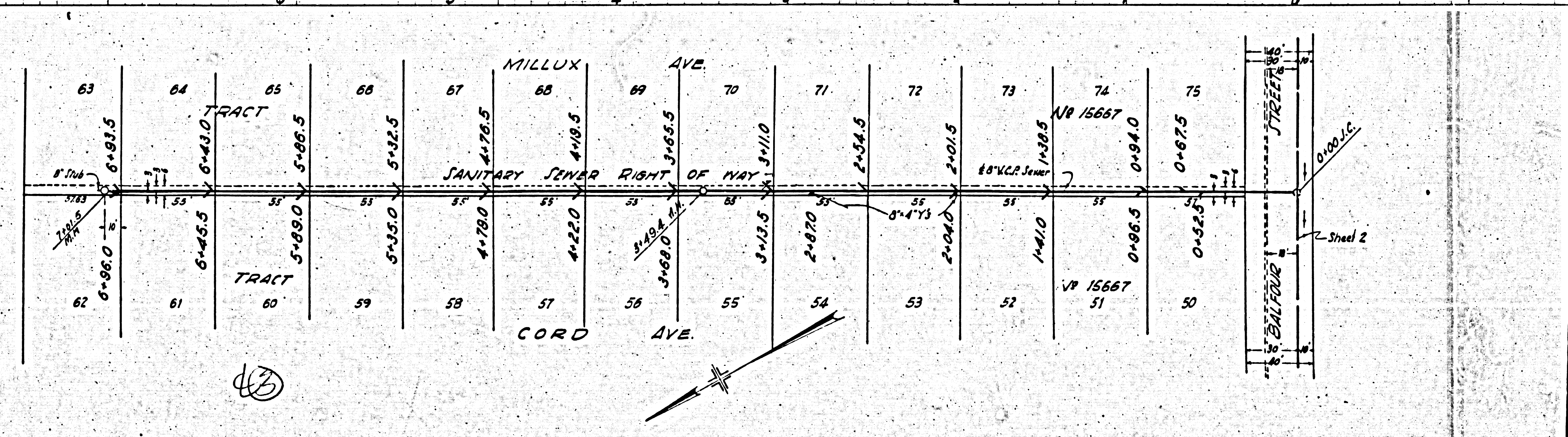
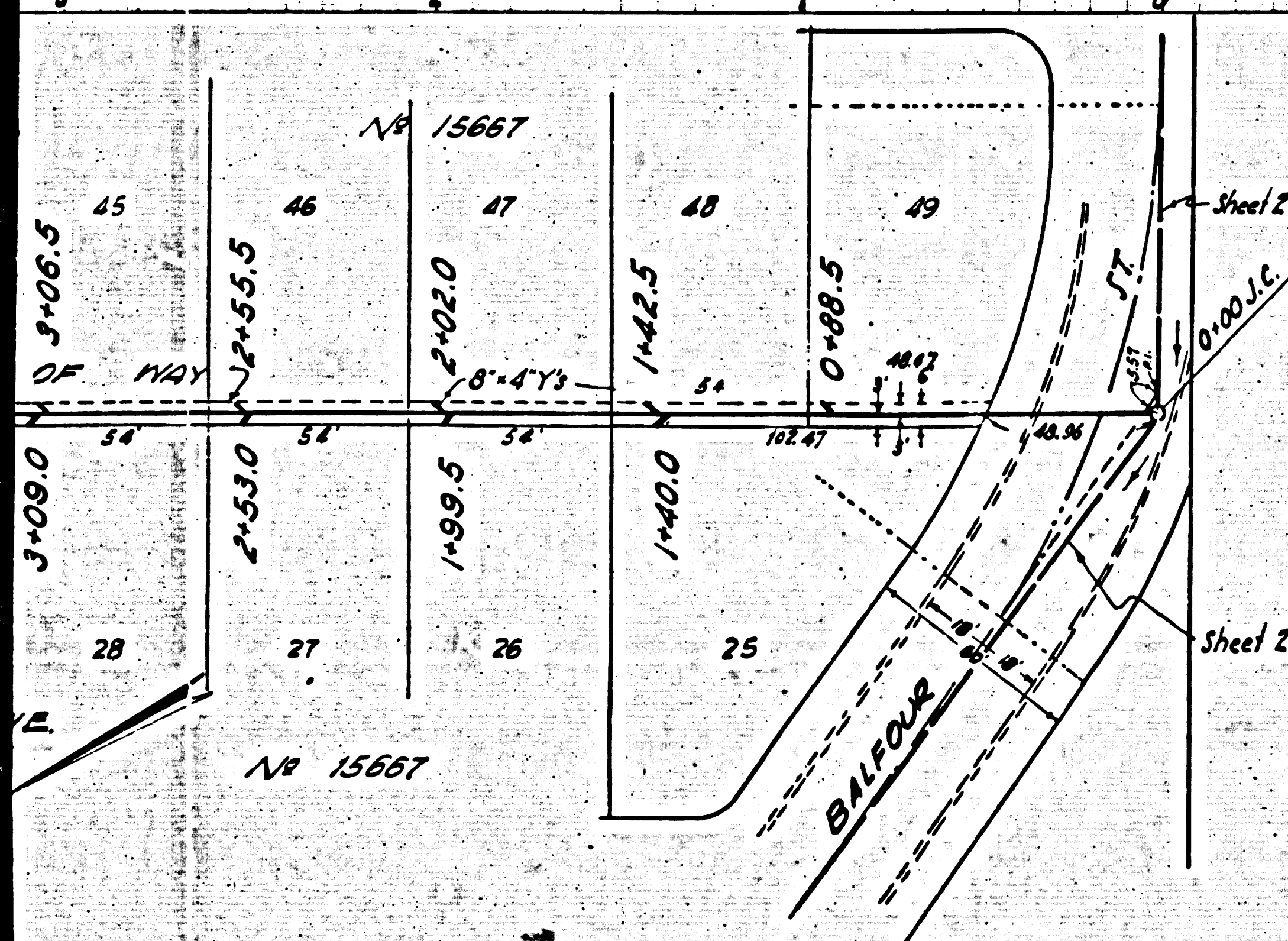
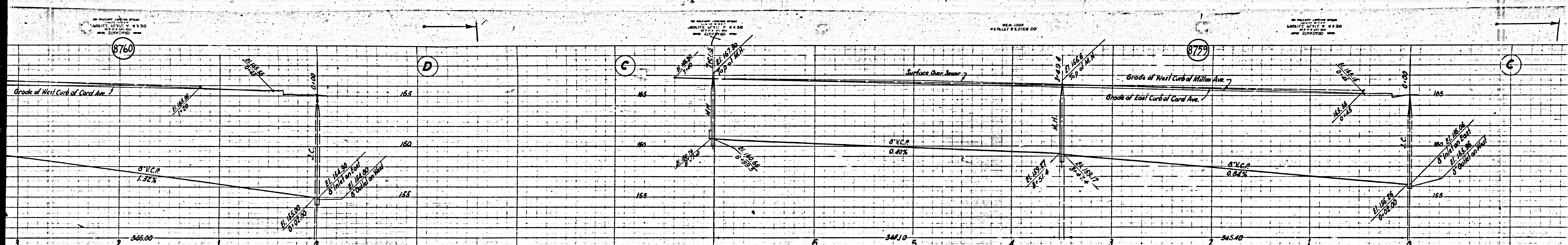
RECEIVED
MAR 3 1949
SANITATION DISTRICT NO. 2

SANITARY SEWER TRACT NO. 15667



Station	Elevation (ft)	Notes
88	6+98.0	
89	6+95.5	
90	6+94.5	
91	6+93.5	
92	5+80.0	
93	5+77.5	
94	5+74.5	
95	4+82.5	
96	4+81.0	
97	3+59.0	
98	3+56.5	
99	2+97.5	
100	2+46.0	
101	1+92.5	
102	1+39.0	
103	0+87.0	
104	0+86.5	
105	0+84.0	
106	0+41.0	
107	5+94.5	
108	5+92.0	
109	5+89.5	
110	5+87.0	
111	5+84.5	
112	5+82.0	
113	5+79.5	
114	5+77.0	
115	5+74.5	
116	5+72.0	
117	5+69.5	
118	5+67.0	
119	5+64.5	
120	5+62.0	

TRACT NO. 15667
 LEONAJUAN AVE.
 MILLUX AVE.
 BALFOUR STREET
 SANITARY SEWER
 RIGHT OF WAY
 J.C.
 Sheet 2
 M4
 M5



NO. 15667

NO. 15667

NO. 15667

8760

8759

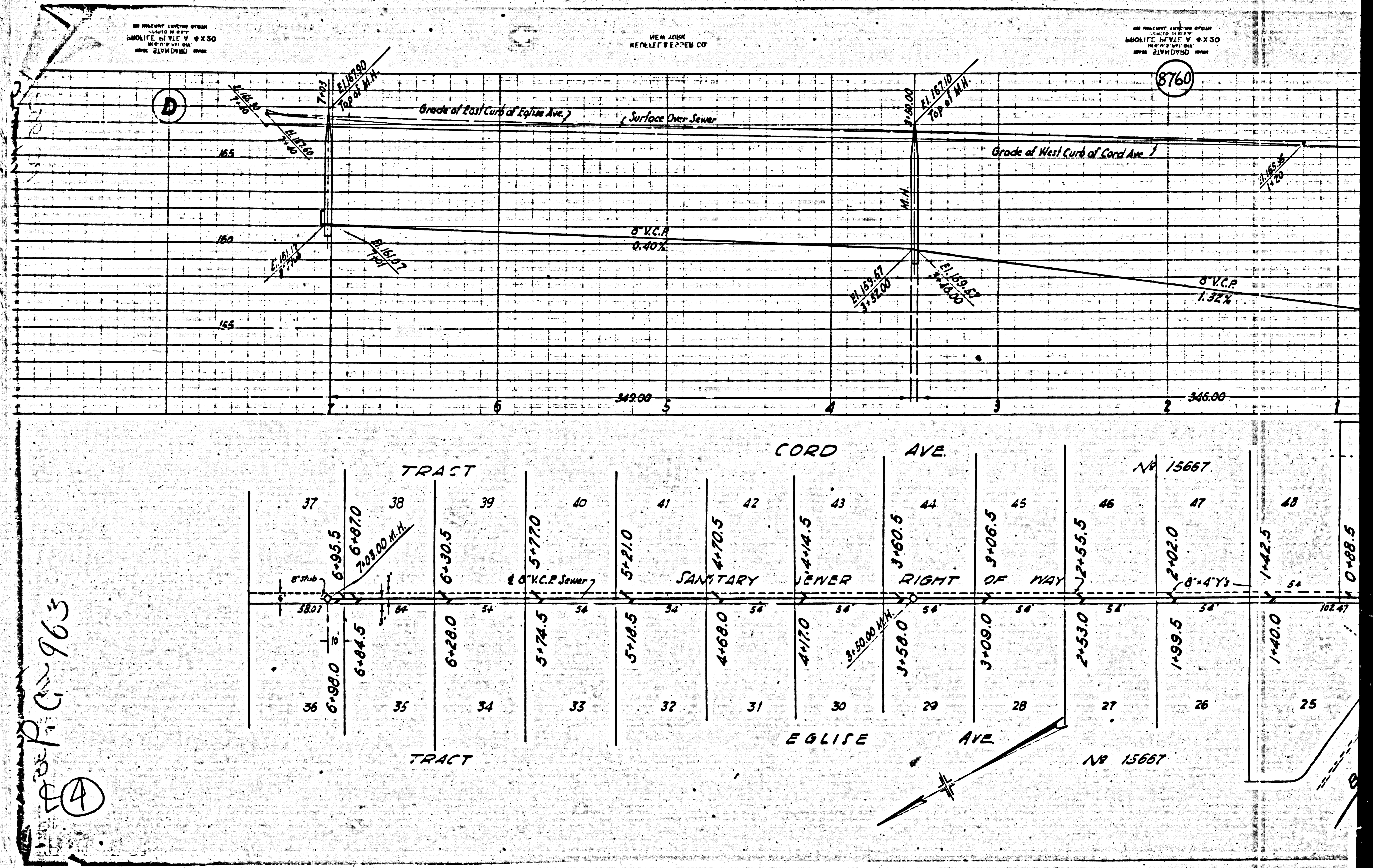
D

C

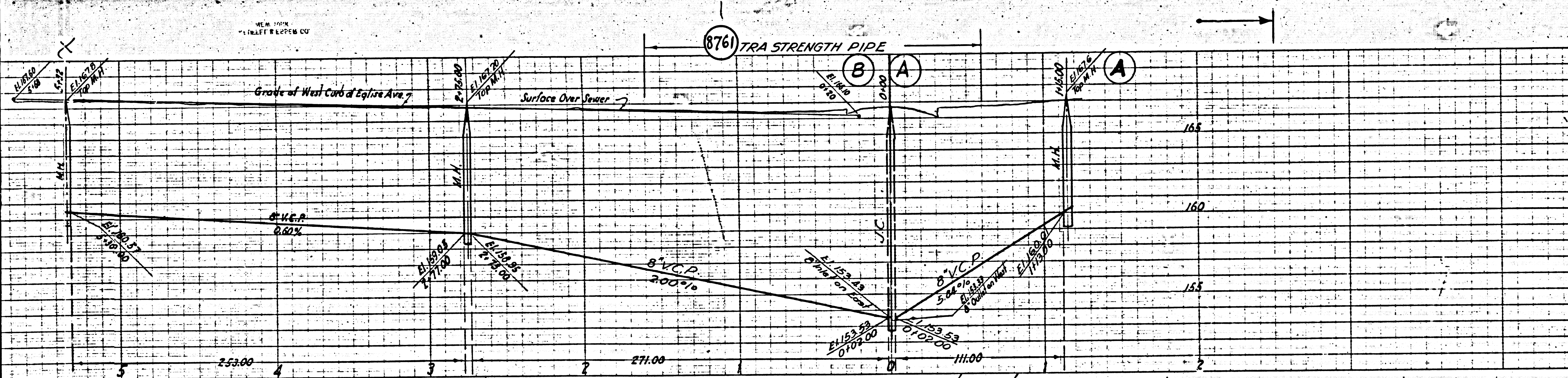
B

M5

M5



963
 964



PROFILE, ALIGNMENT AND GRADE OF 2
SANITARY SEWERS
 TO BE CONSTRUCTED IN
BALFOUR STREET
 BETWEEN PICOVISTA RD. AND PASSONS BLVD.
 SANITARY SEWER RIGHT OF WAY
 IN TRACT NO. 15667

PRIVATE CONTRACT NO. 963
 P.C. 36
 SHEET 2 OF 2 SHEETS

SCALE: VERT. 1" = 4'
 HORIZ. 1" = 40'
 JAN. 1949
 PREPARED IN THE OFFICE OF LEONARD H. BONDY

BY: *Leonard H. Bondy*
REGISTERED CIVIL ENGINEER

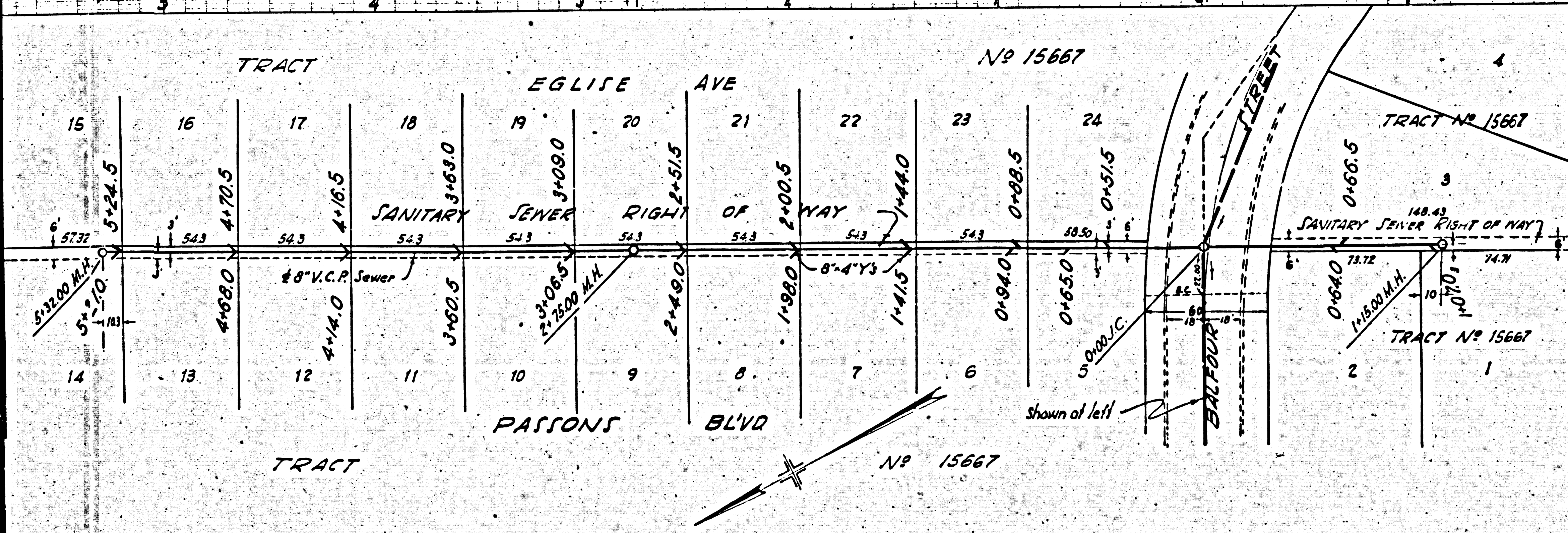
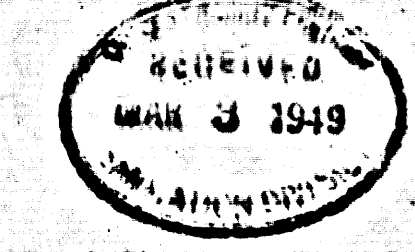
FOR LEGEND
 SEE PLAN N^o 8-0-64
 FOR CONSTRUCTION NOTES SEE SHEET 1

COUNTY OF LOS ANGELES, CALIFORNIA

APPROVED: *[Signature]*
COUNTY ENGINEER

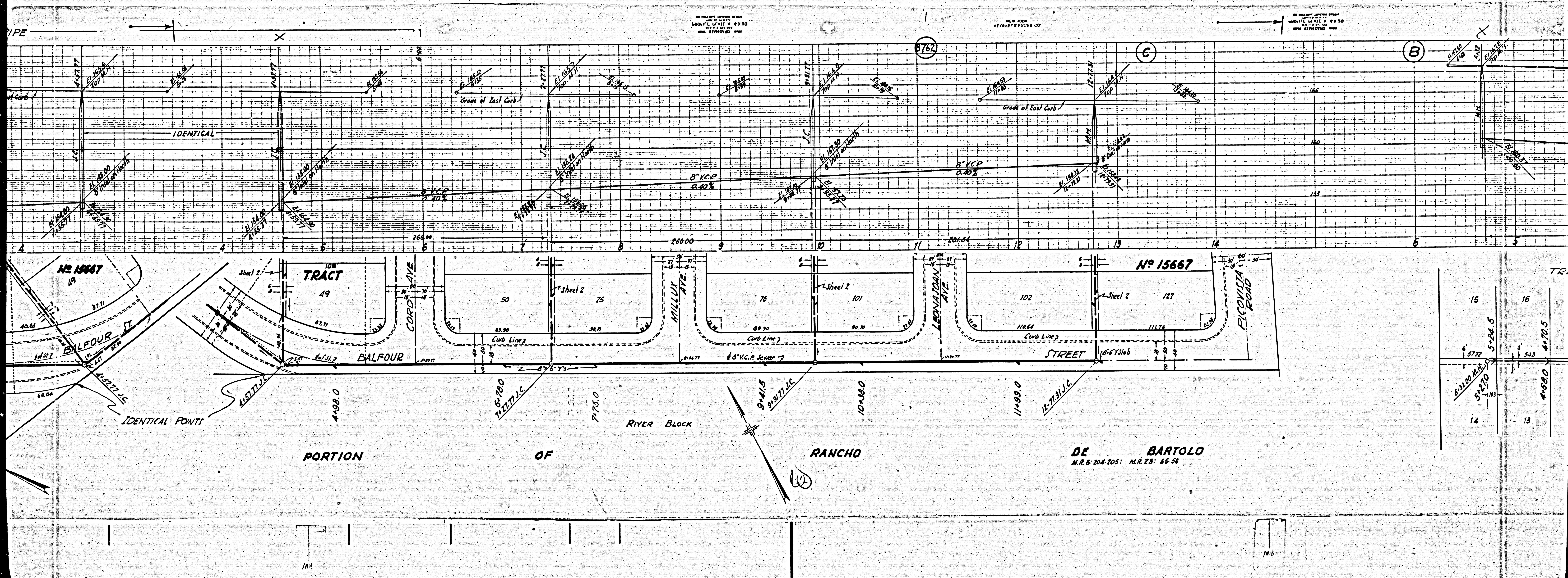
APPROVED: *[Signature]*
CHIEF ENGINEER OF COUNTY SANITATION DISTRICT NO. 2

CHECKED BY: *[Signature]*
OFFICE OF COUNTY ENGINEER, DIST. CE 116 6322



checked - *[Signature]* - 5-6-49

SANITARY SEWERS TRACT NO. 15667

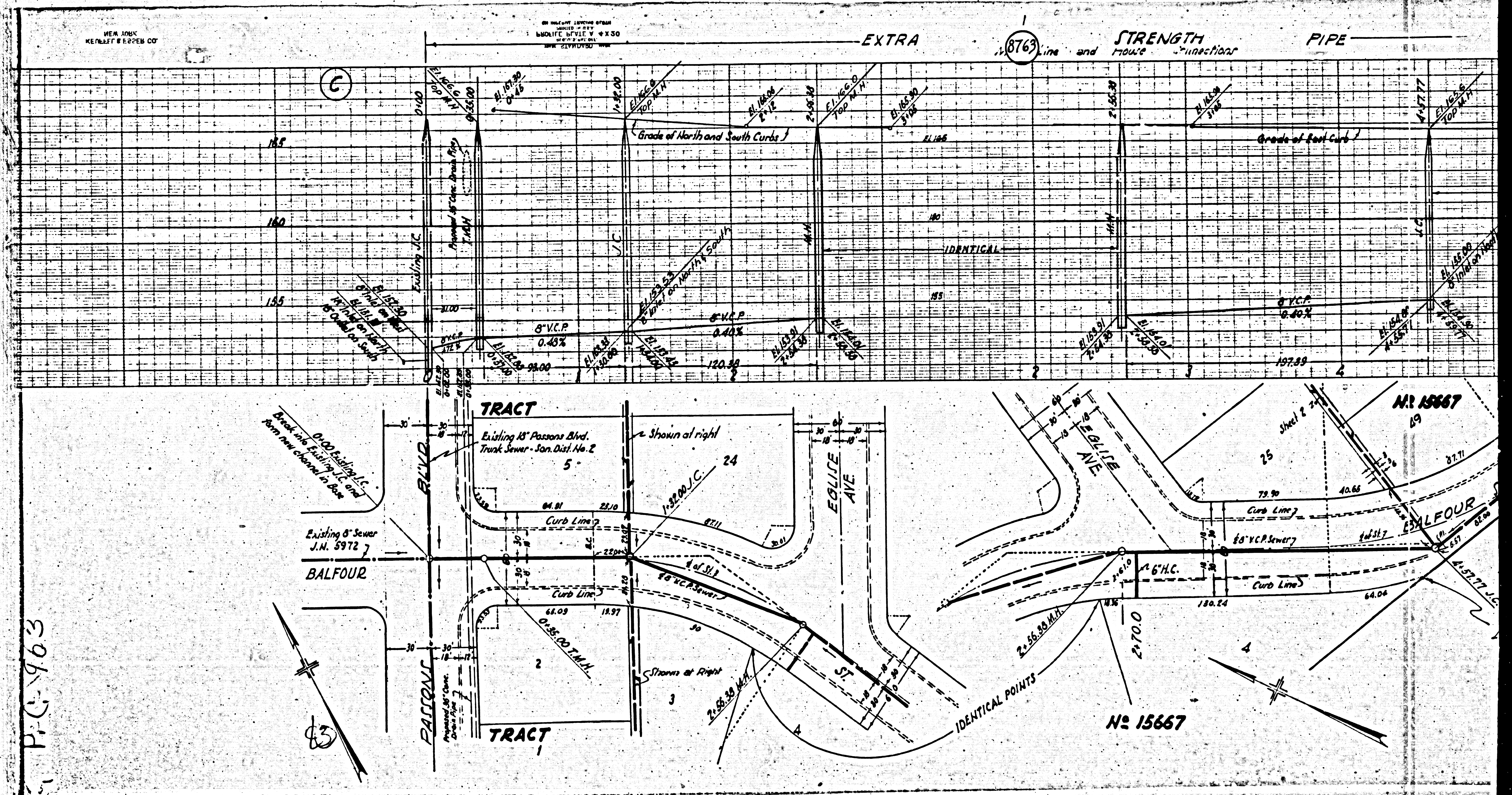


ALL DIMENSIONS GIVEN FROM
 CENTERLINE UNLESS OTHERWISE
 SPECIFIED.

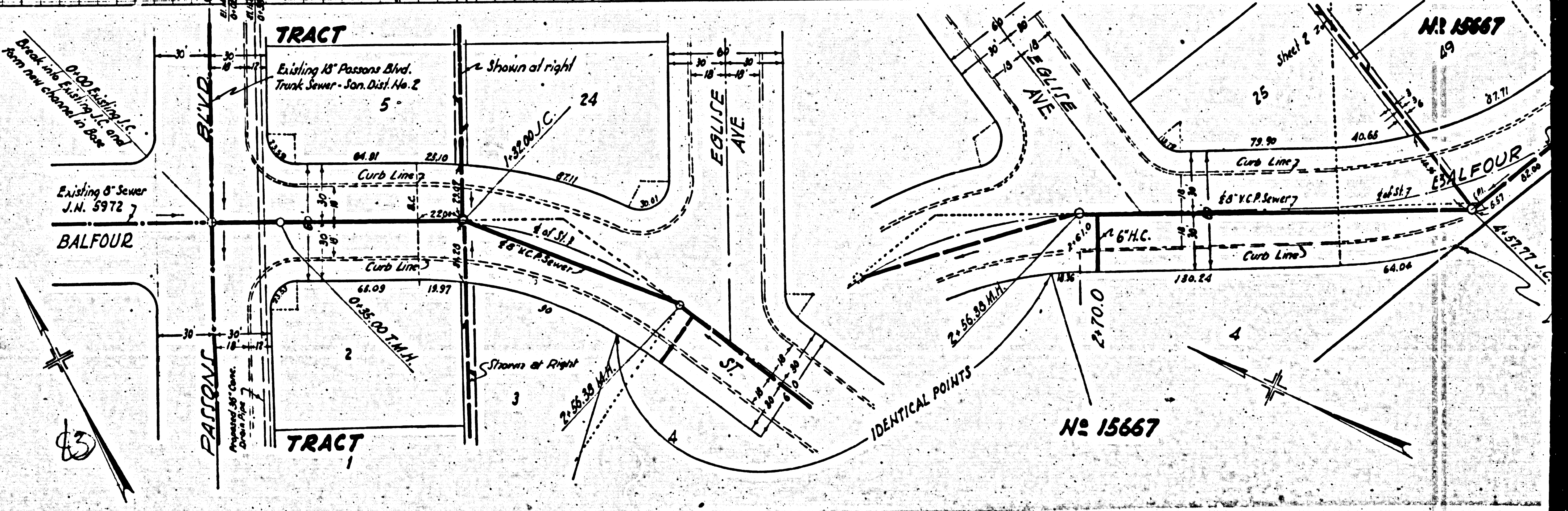
SEE JOB
 SHEET 2 OF 3

ALL DIMENSIONS GIVEN FROM
 CENTERLINE UNLESS OTHERWISE
 SPECIFIED.

RANCHO DE BARTOLO
 M.R. 6-204-205; M.R. 25-55-56



P.C. 963



No. 15667

No. 15667