

B.M.'S ELEV. 388.94 L. & C. CENTER OF CURB RETURN ON SW CORNER OF LINCOLN AVE. & SHRODE ST. L.A. CO. ROAD DEPT. P.B. 2-351

- (1) USE STANDARD MACHINE FRAME AND COVER, 18" x 18"
  - (2) USE STANDARD STRENGTH PIPE EXCEPT AS NOTED
  - (3) USE CEMENT MORTAR FOR ALL VITRIFIED CLAY PIPE JOINTS
  - (4) RESURFACE ALL TRENCH WITHIN PAVED AREA TO MEET LOS ANGELES COUNTY ROAD DEPARTMENT REQUIREMENTS
  - (5) CONSTRUCT HOUSE CONNECTIONS WITH INVERT AT PROPERTY LINE 5 FEET BELOW CURB GRADE
  - (6) ENLARGE FOUR FEET OF SEWER AT POINTS OF INTERFERENCE WITH POLES AS PER 1-10-118
  - (7) ALL STRUCTURES SHALL BE BRICK SEWER STRUCTURES 15" x 18"
- NOTE:  
NO REPRESENTATIVE OF THE COUNTY ENGINEER WILL SURVEY OR LAY OUT ANY PORTION OF THE WORK. THE POWER OF THE AUTHORITY OF REPRESENTATIVE SHALL REMAIN IN THE COUNTY ENGINEER WITH THE SEWER MAINS AND TRENCHES OF ALL HOUSE CONNECTIONS AND TRENCHES AND ALL SMALL PAVEMENT TRENCHES FOR THEM AT THEIR PROPER LOCATIONS WITH STRENGTHENING IN BRICK OR CONCRETE. ANY CHANGES OF LOCATION SHALL BE INDICATED IN NOTES OR THE OWNER OR HIS REPRESENTATIVE SHALL BE RESPONSIBLE FOR THE WORK. NO REVISION SHALL BE MADE IN THESE PLANS WITHOUT APPROVAL OF THE COUNTY ENGINEER.

PROFILE, ALIGNMENT AND GRADE OF  
**SANITARY SEWERS**  
TO BE CONSTRUCTED IN  
**CALIFORNIA AVENUE**  
BETWEEN JOELLA ST. AND SHRODE ST.  
**SHRODE STREET**  
BETWEEN CALIFORNIA AVE. AND SHRODE AVE.  
**PANELA ROAD**  
BETWEEN CALIFORNIA AVE. AND SHRODE AVE.  
**FLAGSTONE AVENUE**  
BETWEEN EL 306 ST. AND PANELA RD.

PRIVATE CONTRACT NO. 965  
W.S. 46  
SHEET 1 OF 3 SHEETS

PREPARED IN THE OFFICES OF  
**LEONARD H. BOWDY**

BY: *Leonard H. Bowdy* (Signature)  
THE C.E. NO. 4823

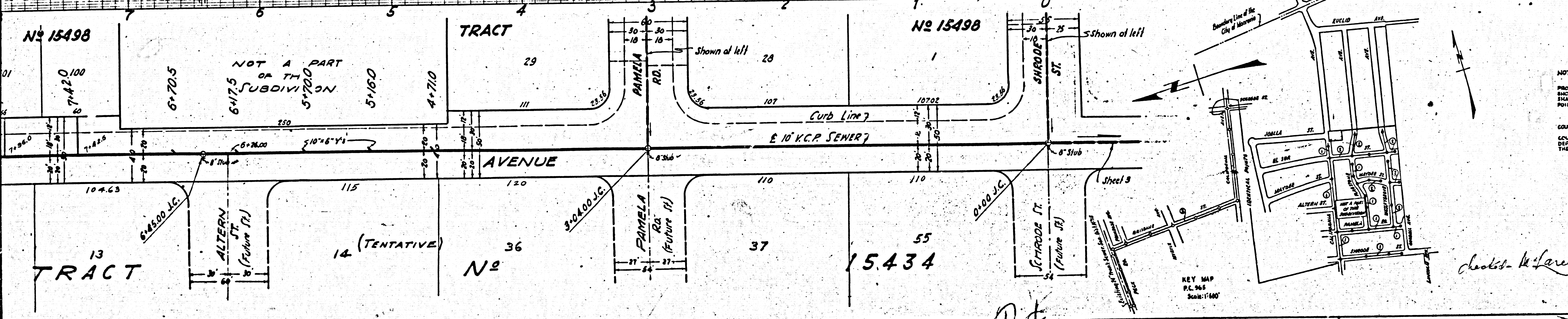
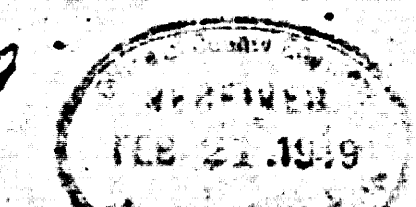
FOR LEGEND  
SEE PLAN NO. 3-0-64

NOTE:  
GRADES TO WHICH THIS IMPROVEMENT IS TO BE CONSTRUCTED ARE SHOWN ON PLANS AND PROFILES. GRADE POINTS FOR TOP OF CURB, CENTER LINE OF STREET OR CENTER LINE OF ALLEY ARE SHOWN BY CIRCLES ON PROFILES. AT ALL POINTS BETWEEN ORIGINATED POINTS THE GRADE SHALL BE ESTABLISHED SO AS TO CONFORM TO A STRAIGHT LINE DRAWN BETWEEN SAID ORIGINATED POINTS.  
ELEVATIONS ARE IN FEET ABOVE U.S.S. DATUM OR MEAN SEA LEVEL.  
THIS DRAWING AND THE DATA HEREON ARE HEREBY MADE A PART OF THE SPECIFICATIONS. THE WORK SHALL BE CONSTRUCTED ACCORDING TO SPECIFICATIONS ON FILE IN THE OFFICE OF THE COUNTY ENGINEER AND SHALL BE PROSECUTED ONLY IN THE PRESENCE OF THE COUNTY ENGINEER. SHOULD WORK BE STOPPED, THE CONTRACTOR MUST OBTAIN A PERMIT TO RE-ENTER IN COUNTY STREET FROM THE L.A. COUNTY ROAD DEPT., 211 SOUTH MAIN ST., AND MAKE A DEPOSIT WITH THE COUNTY ENGINEER, 700 FASHION LEASER BUILDING, SUFFICIENT TO COVER THE COST OF CONSTRUCTION INSPECTION AND RECORD PLANS.

COUNTY OF LOS ANGELES, CALIFORNIA

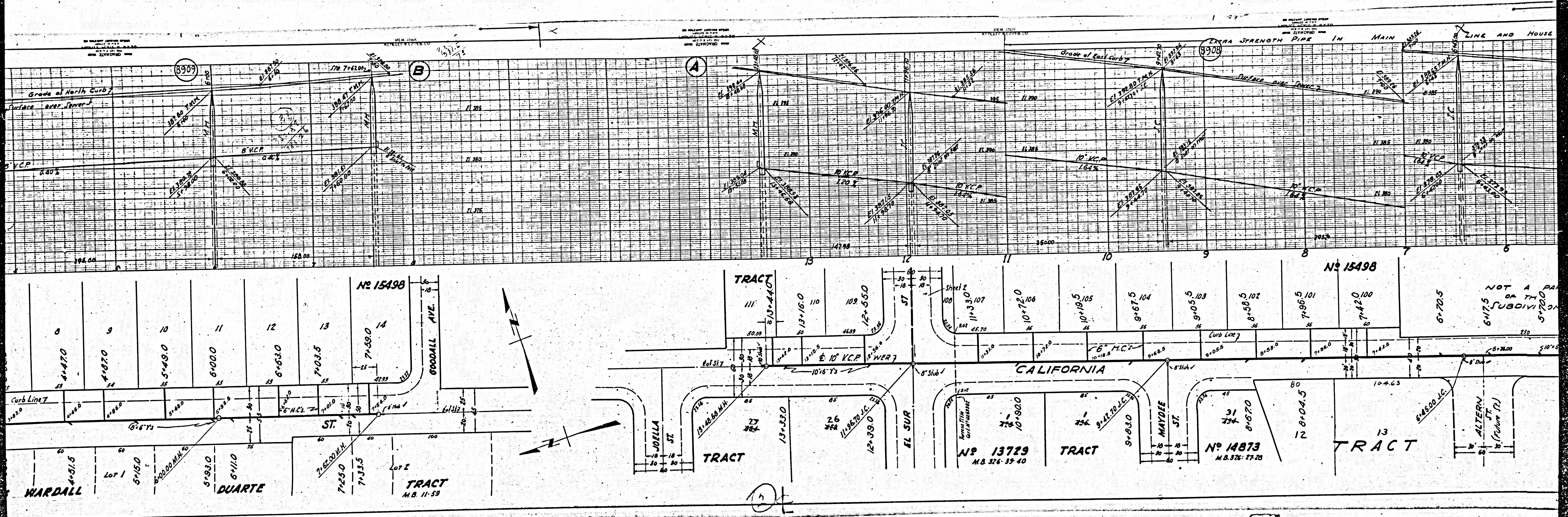
APPROVED: *[Signature]* COUNTY ENGINEER  
APPROVED: *[Signature]* CHIEF ENGINEER OF COUNTY SANITATION DISTRICT NO. 13

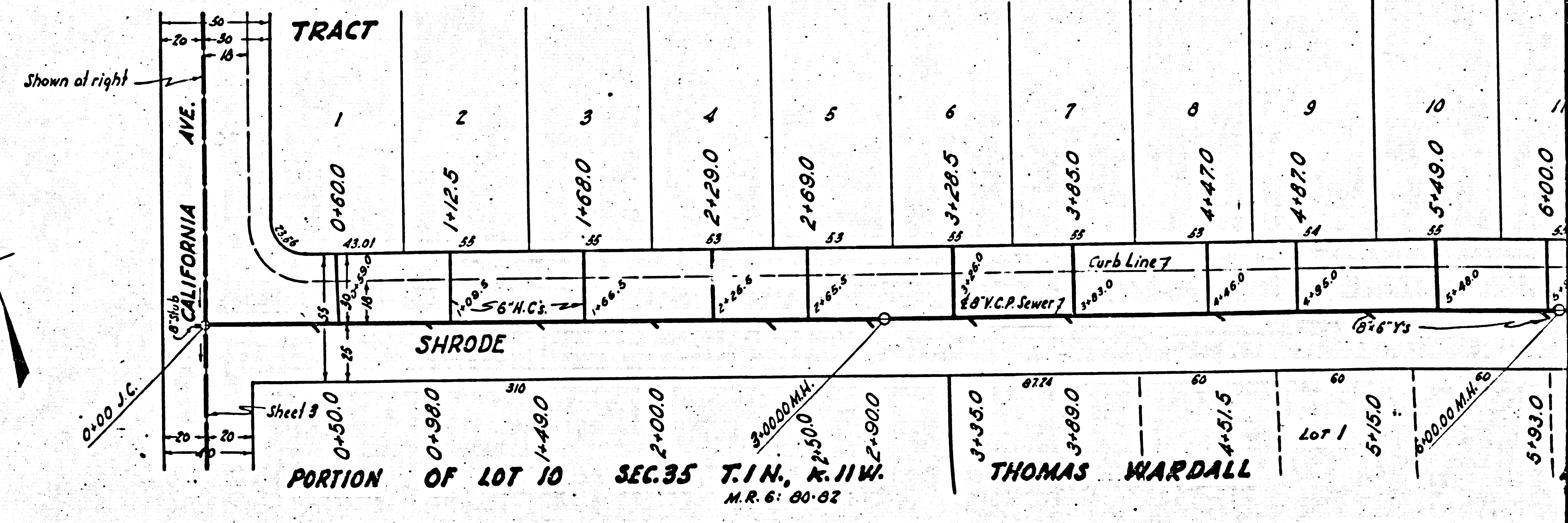
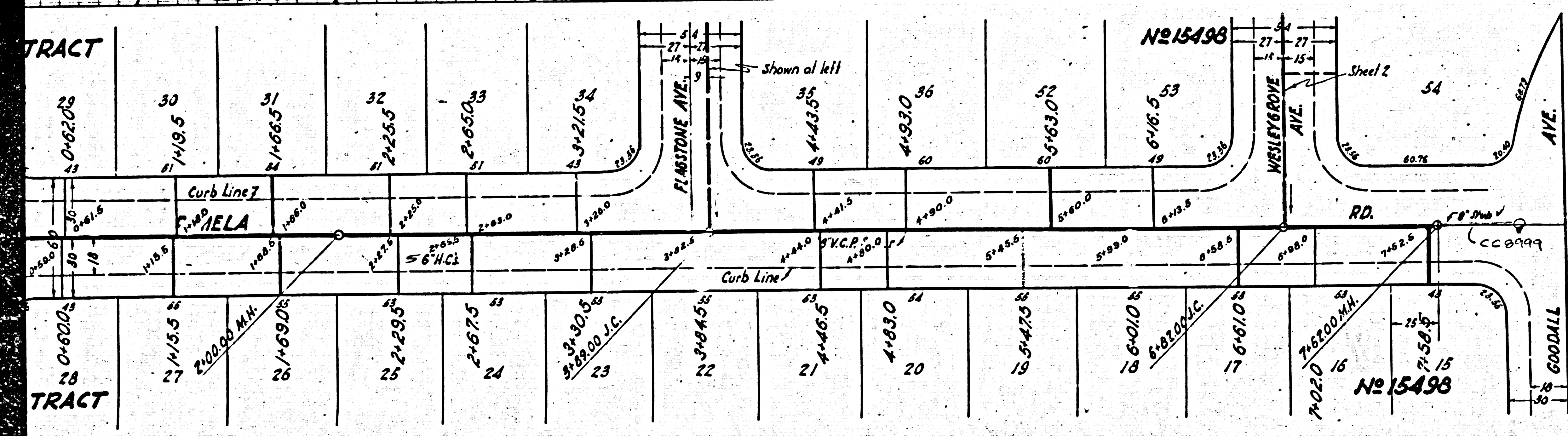
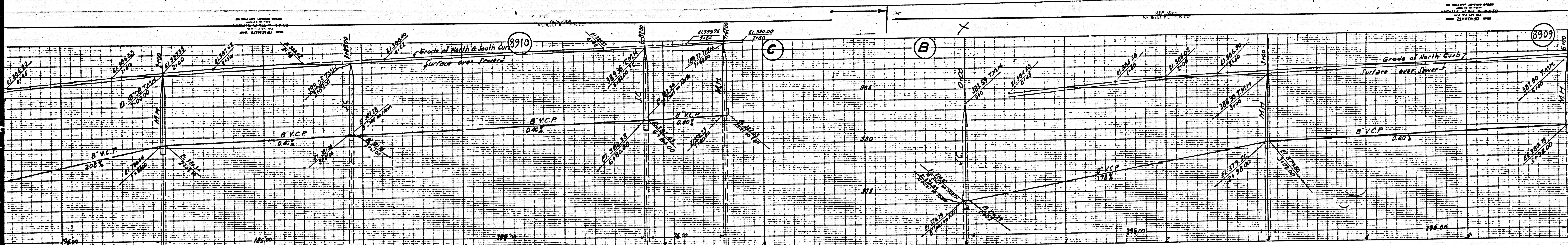
CHECKED BY: *Walter C. McLean* 2-15-1945  
OFFICE OF COUNTY ENGINEER, DISTRICT NO. 13



KEY MAP  
P.C. 965  
Scale: 1"=60'

*Charles McLean - 6-3-49*



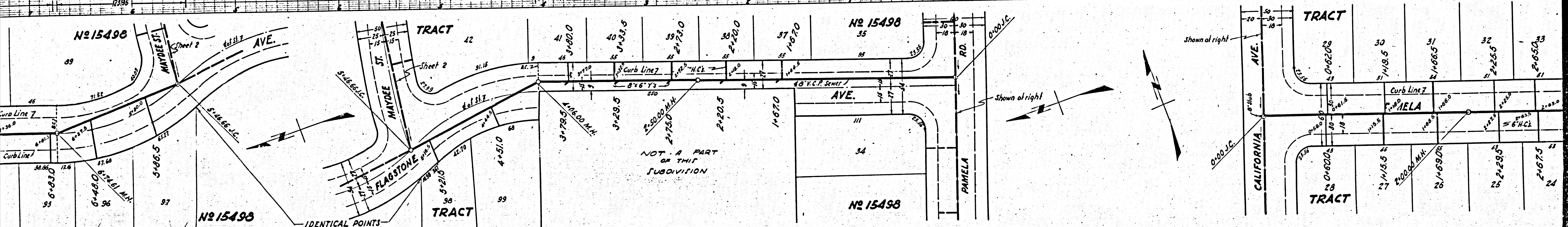
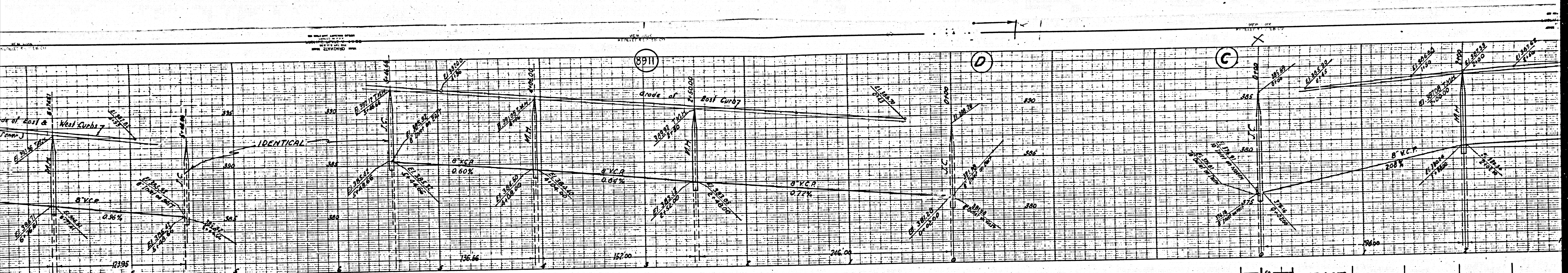


3

PRE  
JOB

M.S.

M.S.

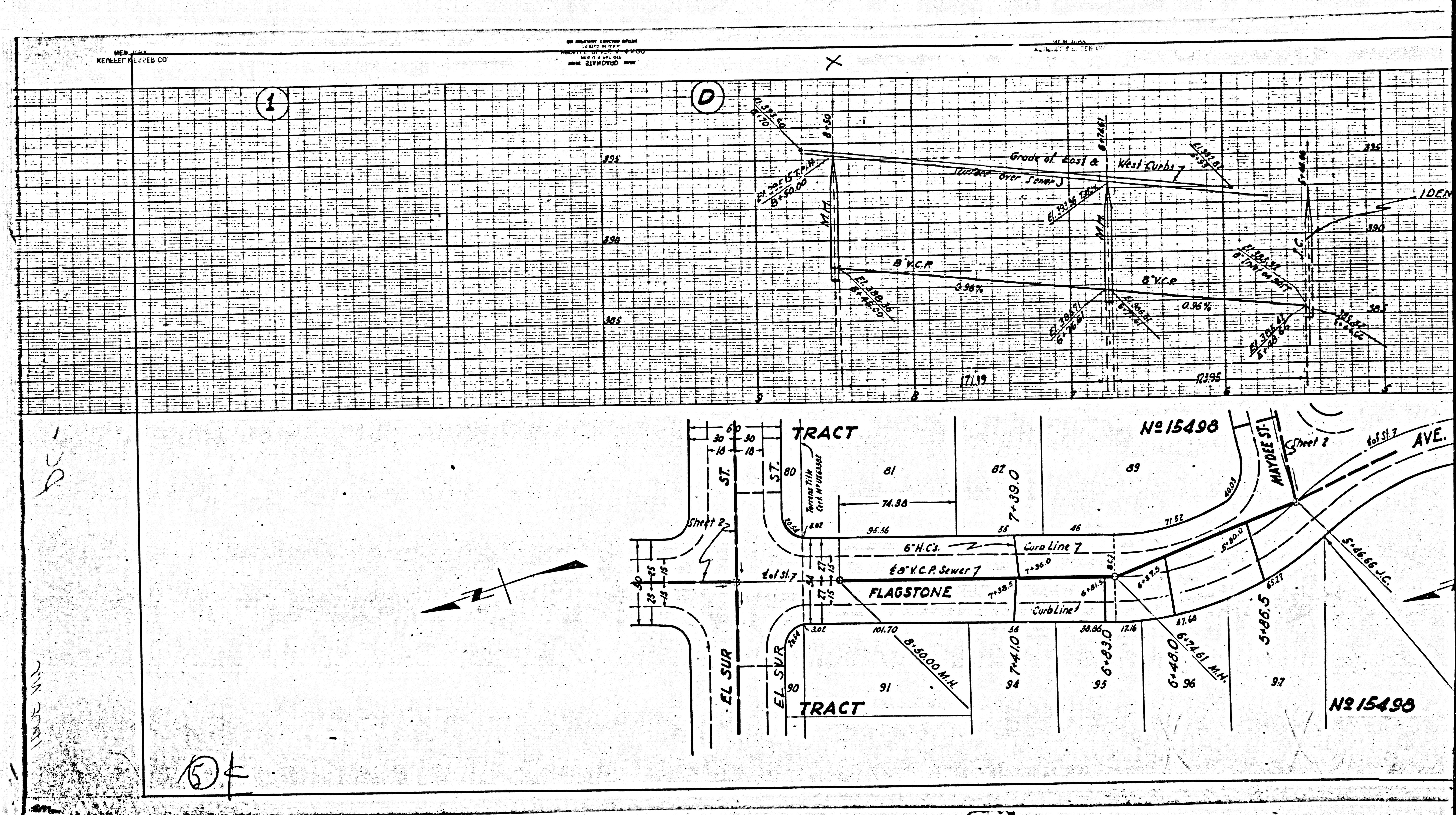


NOT A PART  
OF THIS  
SUBDIVISION

④

PRE  
M-3

M-5



(1)

(D)

PC-

(E)

Nº 15498

Nº 15498

TRACT

TRACT

6" V.C.P. Sewer

6" H.C.'s

Curb Line 7

Curb Line 1

Sheet 2

Sheet 2

ST

ST

ST

ST

ST

ST

ST

ST

ST

ST

ST

ST

ST

ST

ST

ST

ST

ST

ST

ST

ST

ST

ST

ST

ST

ST

ST

ST

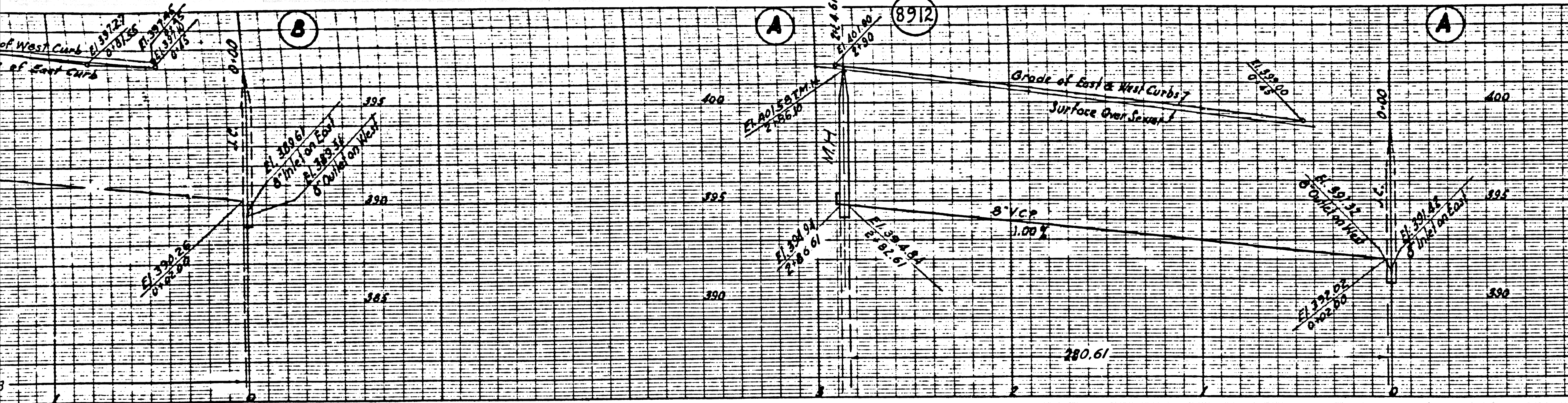
ST

ST

ST

ST

ST



**B.M. N.P. 38894 L.E.T. IN CORNER**  
**Curb Return on SW Corner of LINCOLN AVE**  
**& MADDA ST. L.A. Co. Road Dist. F.B. 2-381.**

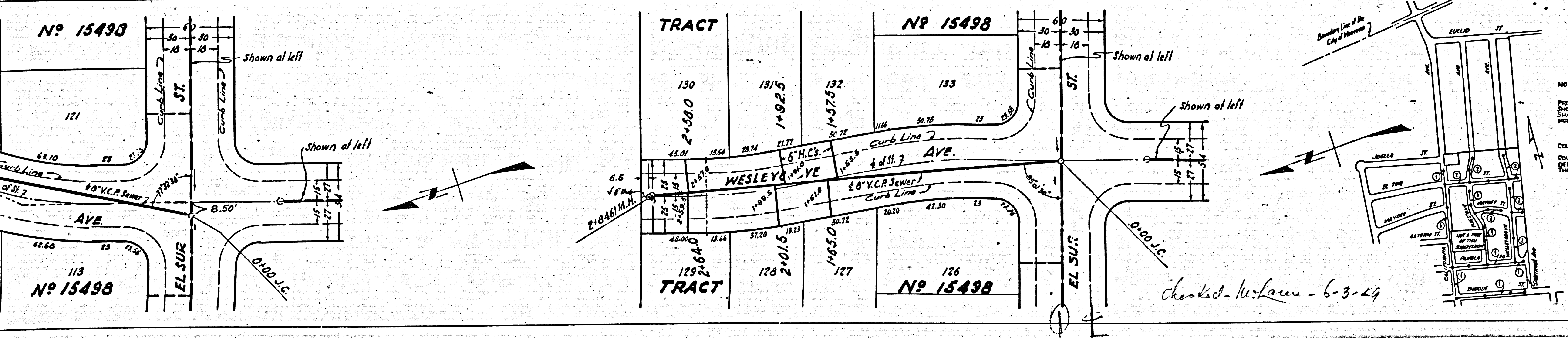
(1) USE STANDARD MANHOLE FRAMES AND COVERS, C.I. PIPE  
 (2) USE STANDARD STRENGTH PIPE  
 (3) USE STANDARD JOINTS FOR ALL PIPE JOINTS  
 (4) REINFORCE ALL TRENCH WITHIN PAVED AREA TO MEET  
 LOS ANGELES COUNTY ROAD DEPARTMENT REQUIREMENT  
 (5) CONTRACTOR SHALL BE RESPONSIBLE FOR ALL NECESSARY  
 LINE & FIVE FEET 8'-0" MIN. CURB GRADES  
 (6) ENCASE FOUR FEET OF TRENCH AT POINTS OF INTERFERENCE WITH  
 POLES AND PIPES 3'-6" MIN.  
 (7) ALL STRUCTURES SHALL BE BUILT WITH AN STRUCTURE 2'-0" MIN.

NOTE:  
 THE CONTRACTOR SHALL BE RESPONSIBLE FOR THE PROTECTION OF ALL UTILITIES AND STRUCTURES UNDER THE GRADE AND SHALL BE RESPONSIBLE FOR THE PROTECTION OF ALL UTILITIES AND STRUCTURES UNDER THE GRADE AND SHALL BE RESPONSIBLE FOR THE PROTECTION OF ALL UTILITIES AND STRUCTURES UNDER THE GRADE.

**PROFILE ALIGNMENT AND GRADE OF**  
**SANITARY SEWERS**  
**TO BE CONSTRUCTED IN**  
**WESLEYGROVE AVENUE**  
 BETWEEN NORTH LINE OF TRACT NO. 15498 AND PAMELA ROAD  
**FLAGSTONE AVENUE**  
 BETWEEN NORTH LINE OF TRACT NO. 15498 AND EL SUR STREET  
**EL SUR STREET**  
 BETWEEN CALIFORNIA AVENUE AND EAST LINE OF TRACT NO. 15498  
**MAYDEE STREET**  
 BETWEEN WEST LINE OF TRACT NO. 15498 AND EAST LINE OF TRACT NO. 15498

**PRIVATE CONTRACT NO. 365**  
**WS-46**  
**SHEET 2 OF 3 - THEORY**

PREPARED IN THE OFFICE OF  
**LEONARD H. GONDY**



BY: *Leonard H. Gondy*

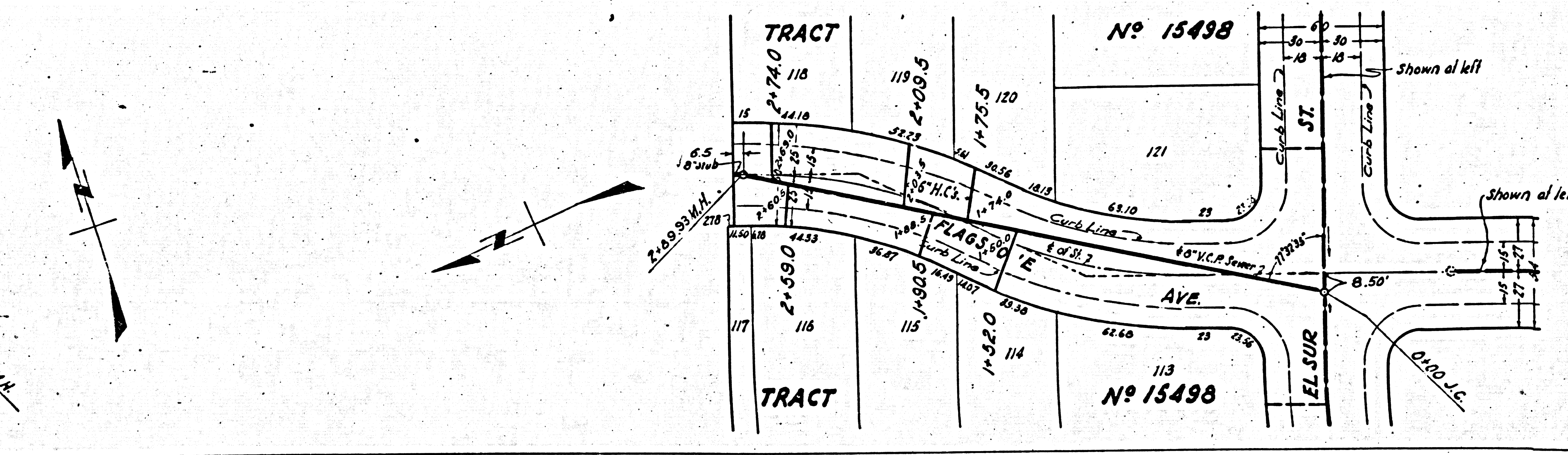
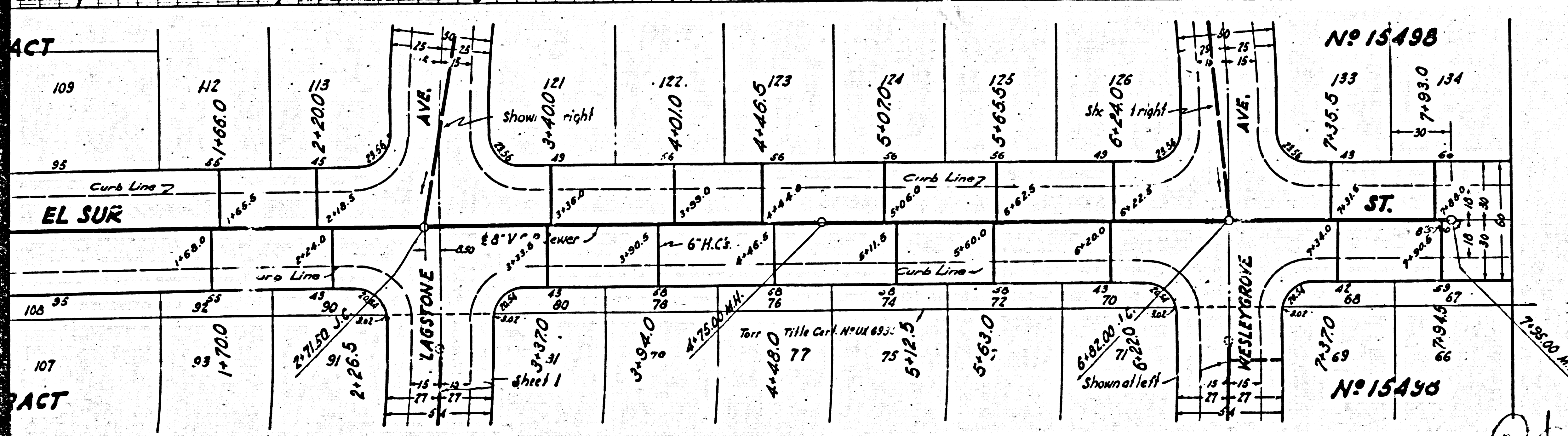
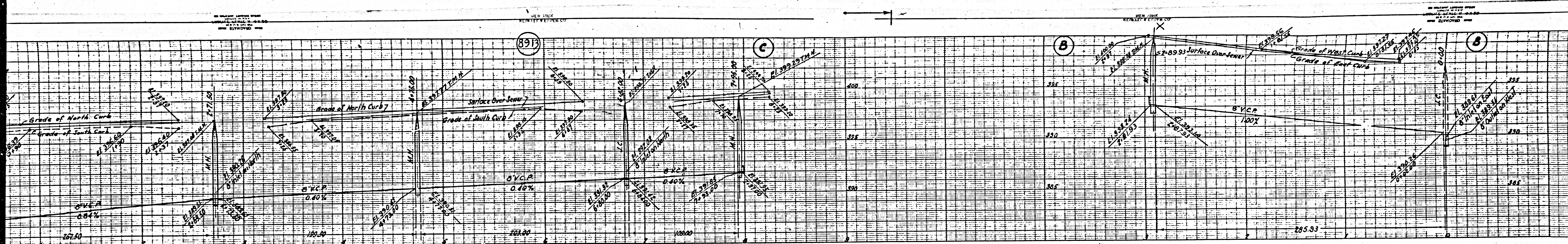
FOR LEGEND  
 SEE PLAN NO. 3-0-64

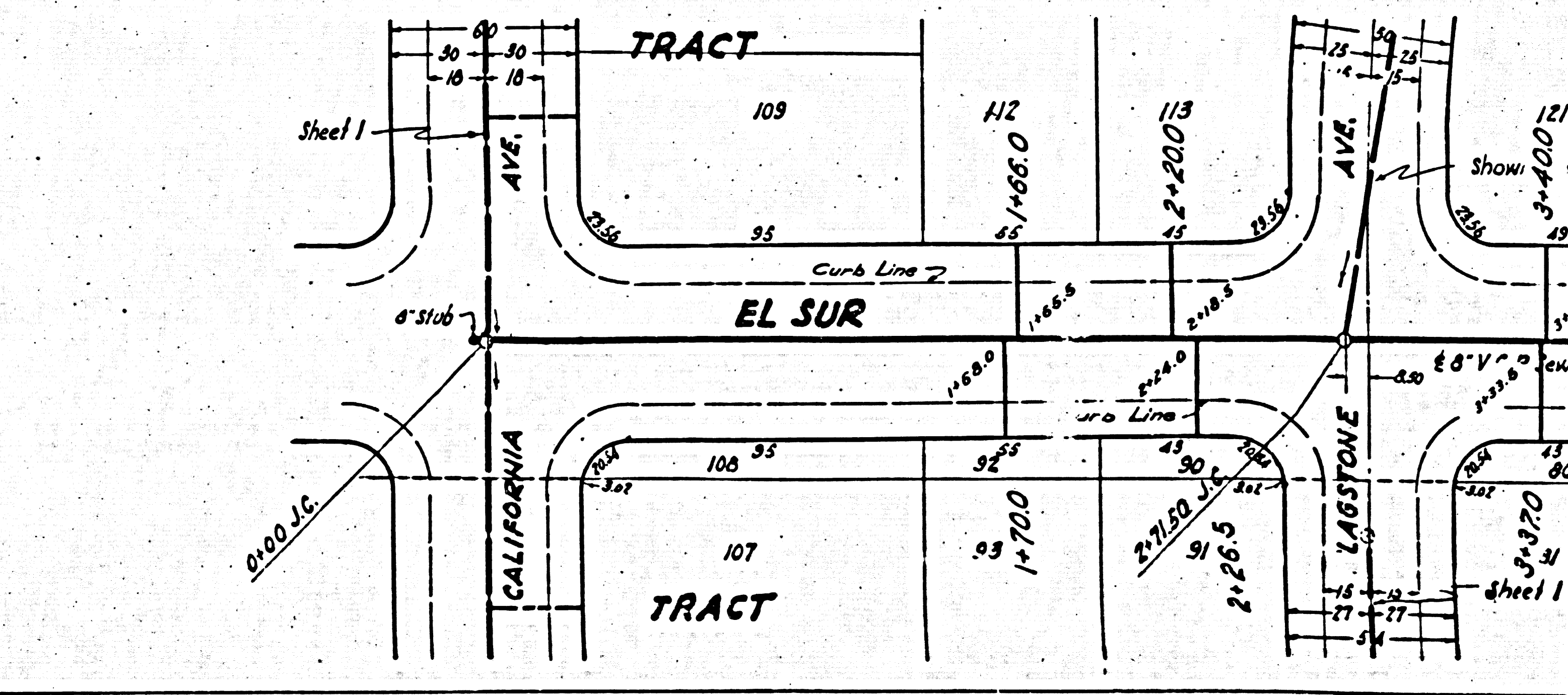
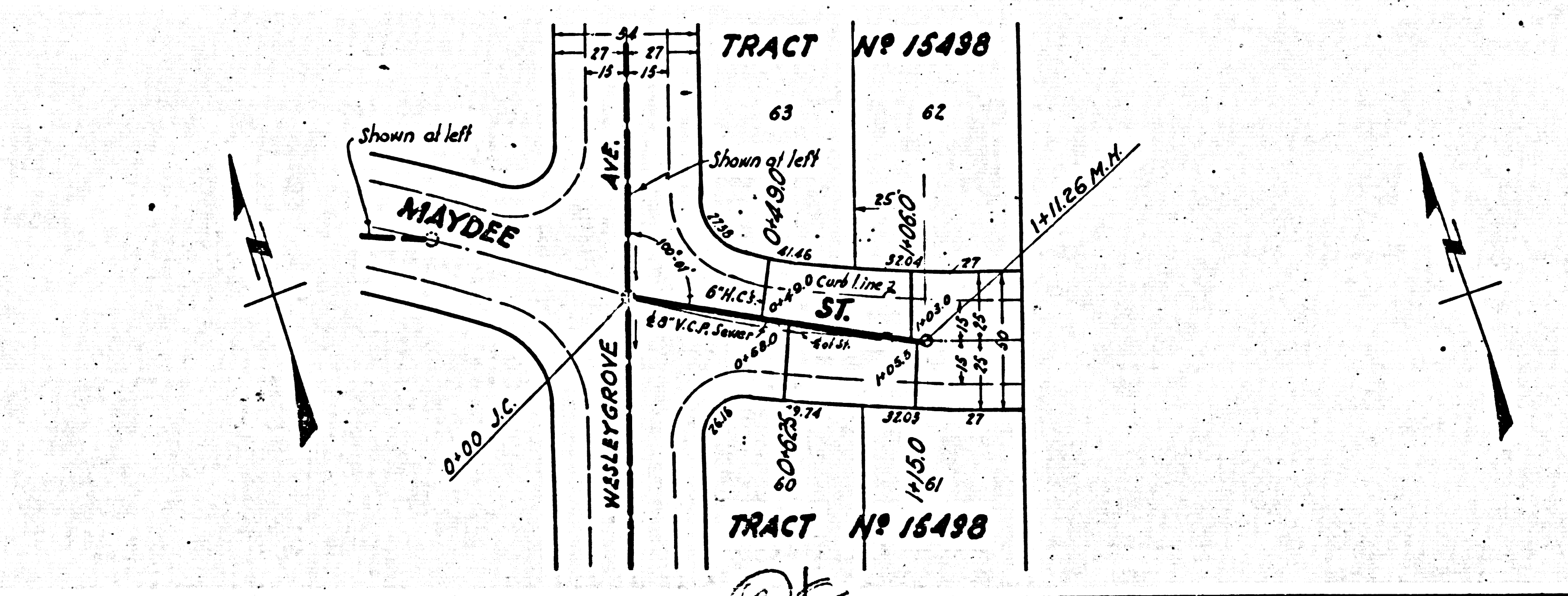
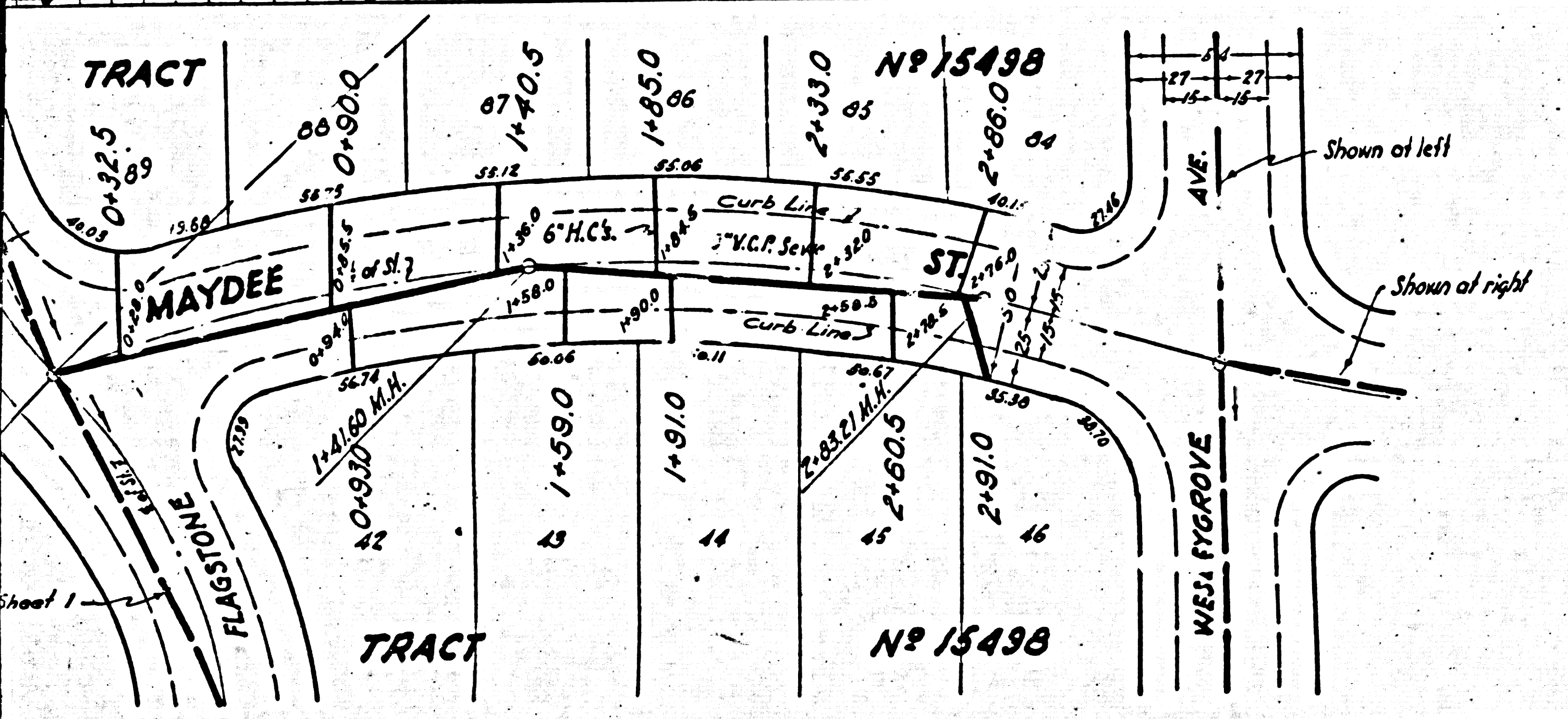
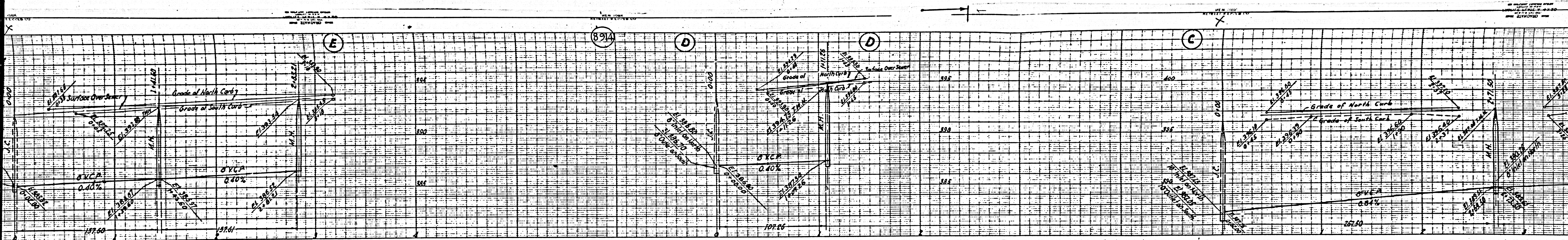
NOTE:  
 GRADES TO WHICH THIS IMPROVEMENT IS TO BE CONSTRUCTED ARE SHOWN ON PLAN AND PROFILE. GRADE POINTS FOR TOP OF CURB CENTER LINE OF STREET OR CENTER LINE OF ALLEY ARE SHOWN BY CIRCLES ON PROFILE. AT ALL POINTS BETWEEN DESIGNATED POINTS THE GRADE SHALL BE ESTABLISHED BY A STRAIGHT LINE DRAWN BETWEEN SAID DESIGNATED POINTS.  
 ELEVATIONS ARE IN FEET ABOVE U.S. DATUM OR MEAN SEA LEVEL.  
 THIS DRAWING AND THE DATA HEREON ARE HEREBY MADE A PART OF THE SPECIFICATIONS UNDER WHICH THIS IMPROVEMENT IS TO BE CONSTRUCTED. THE CONTRACTOR SHALL BE RESPONSIBLE FOR THE PROTECTION OF ALL UTILITIES AND STRUCTURES UNDER THE GRADE AND SHALL BE RESPONSIBLE FOR THE PROTECTION OF ALL UTILITIES AND STRUCTURES UNDER THE GRADE. BEFORE WORK CAN BE STARTED, THE CONTRACTOR MUST OBTAIN A PERMIT TO EXCAVATE IN COUNTY STREETS FROM THE L.A. COUNTY ROAD DIST. 211 SOUTH MAIN ST. AND MAKE A DEPOSIT WITH THE COUNTY ENGINEER, THE PROVISION LEASING BUILDING, SUFFICIENT TO COVER THE COST OF CONSTRUCTION INSPECTION AND RECORD PLANS.

COUNTY OF LOS ANGELES, CALIFORNIA  
 APPROVED: *Leonard H. Gondy* COUNTY ENGINEER  
 APPROVED: *[Signature]* OFFICE ENGINEER  
 FOR DIST. ENGINEER OF COUNTY SANITATION DISTRICT NO. 11  
 CHECKED BY: *Walter C. Williams* 2-16-1919  
 OFFICE OF COUNTY ENGINEER, 100 S. G. ST.

D. C. WILSON, CIVIL ENGINEER

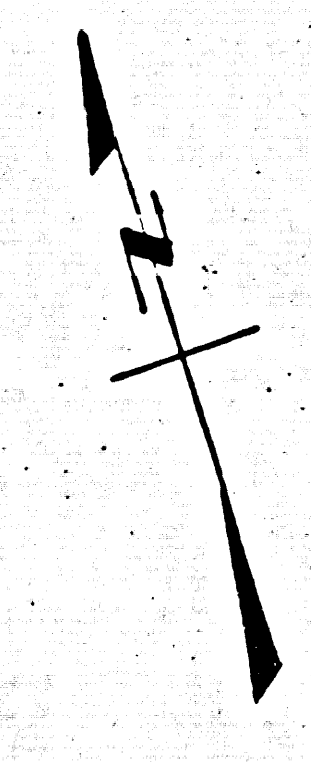
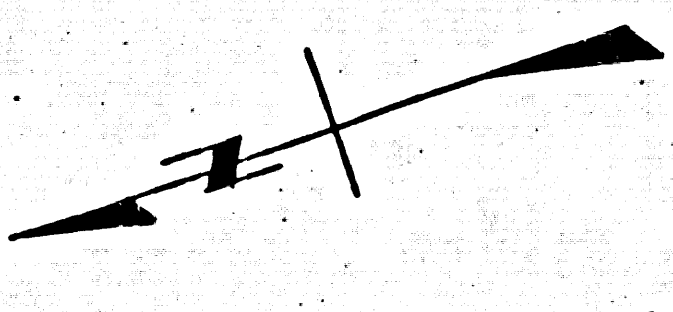
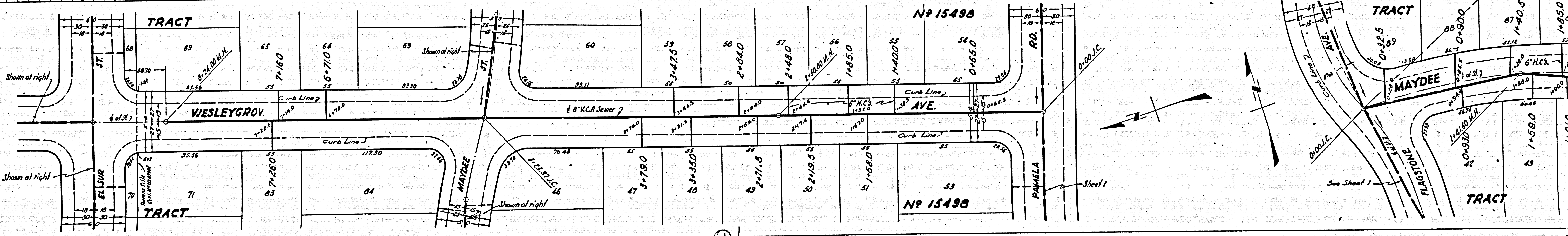
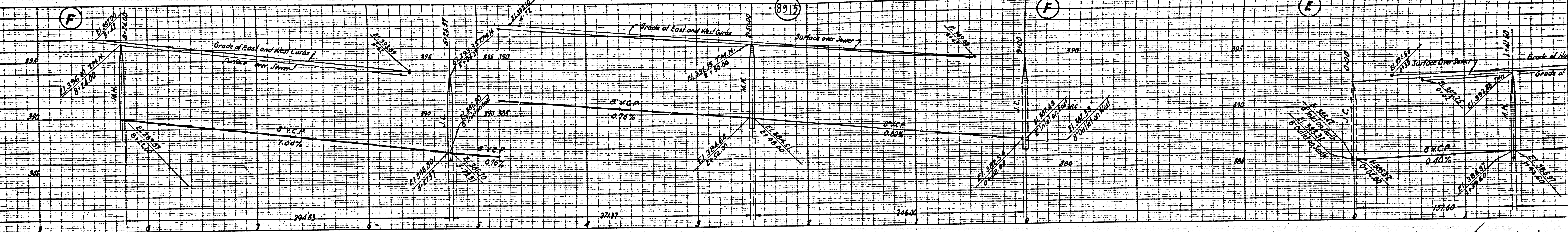
Checked - Williams - 6-3-29







MEASUREMENTS MADE BY FIELD SURVEYOR AND RECHECKED BY CIVIL ENGINEER. ALL DIMENSIONS ARE SHOWN IN FEET AND INCHES.

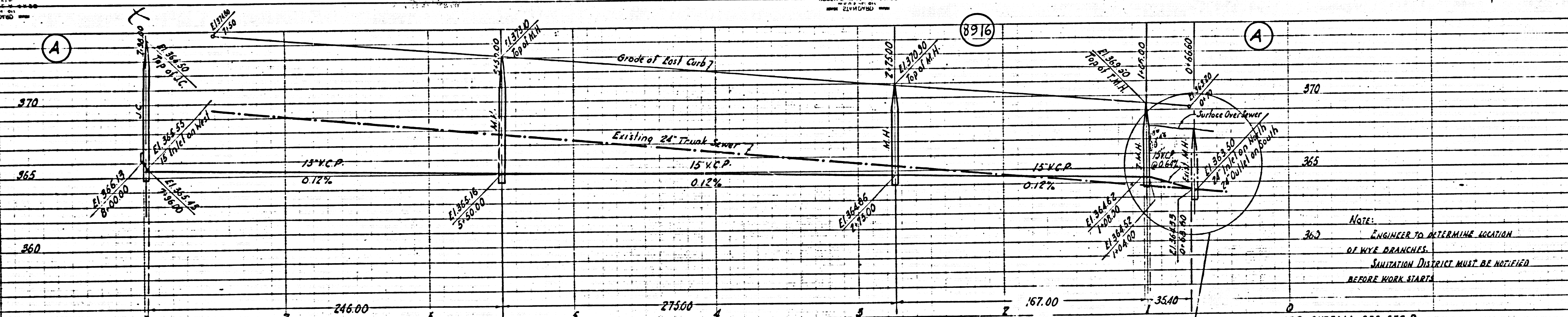


See Sheet 1

BY THE COUNTY ENGINEER

BY THE COUNTY ENGINEER

BY THE COUNTY ENGINEER



PROFILE ALIGNMENT AND GRADE OF  
**SANITARY SEWERS**  
 TO BE CONSTRUCTED IN  
**PECK ROAD**  
 BETWEEN BRISBANE ST AND A POINT 100 FT. SOUTHERLY THEREFROM  
**BRISBANE STREET**  
 BETWEEN PECK RD. AND CALIFORNIA AVE.  
**CALIFORNIA AVENUE**  
 BETWEEN BRISBANE ST. AND SHRODE ST.

PRIVATE CONTRACT NO. 965  
 W.S. 46

SCALE VERT. 1" = 4'  
 HORIZ. 1" = 40'

SHEET 3 OF 3 SHEETS

PREPARED IN THE OFFICE OF  
**LEONARD H. GOWDY**

BY *Leonard H. Gowdy*  
 S.E.C.E. NO. 4873

NOTE:  
 ENGINEER TO DETERMINE LOCATION  
 OF WYE BRANCHES.  
 SANITATION DISTRICT MUST BE NOTIFIED  
 BEFORE WORK STARTS

FOR REVISED OUTFALL SEE SEC. D  
 AT LEFT HEREON

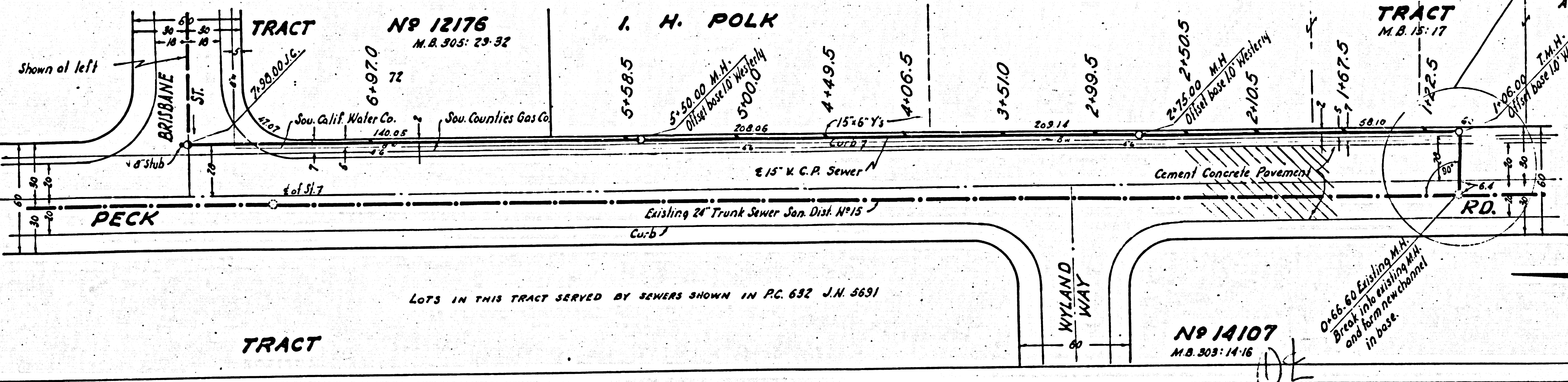
FOR LEGEND  
 SEE PLAN N° 3-64

FOR CONSTRUCTION NOTES SEE SHEET 1  
 COUNTY OF LOS ANGELES, CALIFORNIA

APPROVED *Edmond*  
 COUNTY ENGINEER

APPROVED *W.C. Williams*  
 COUNTY ENGINEER

checked by *McLennan* - 6-3-29 CHECKED BY *W.C. Williams* 2-23-29  
 OFFICE OF COUNTY ENGINEER, S.E.C.E. NO. 8708



LOTS IN THIS TRACT SERVED BY SEWERS SHOWN IN P.C. 632 J.N. 3691

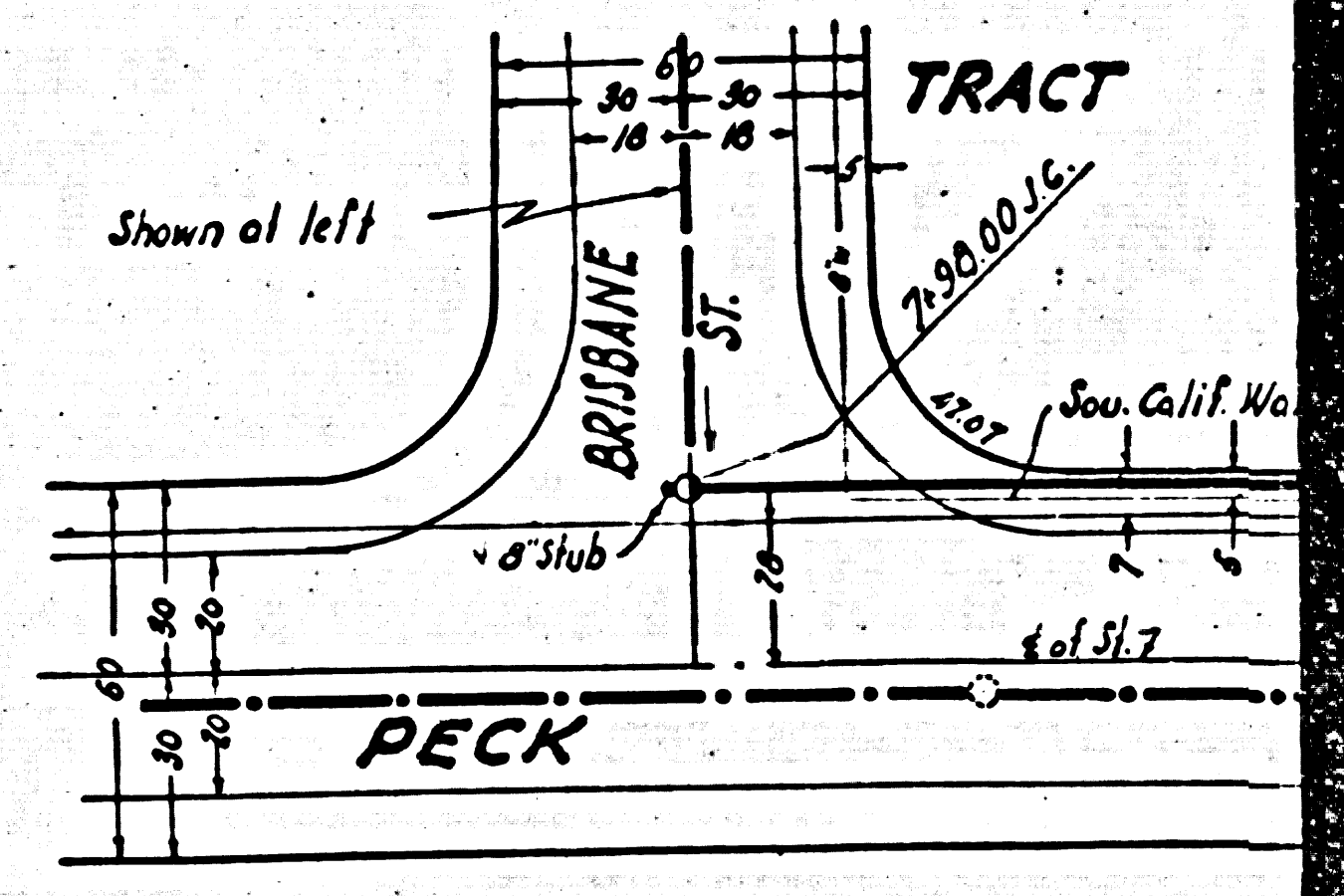
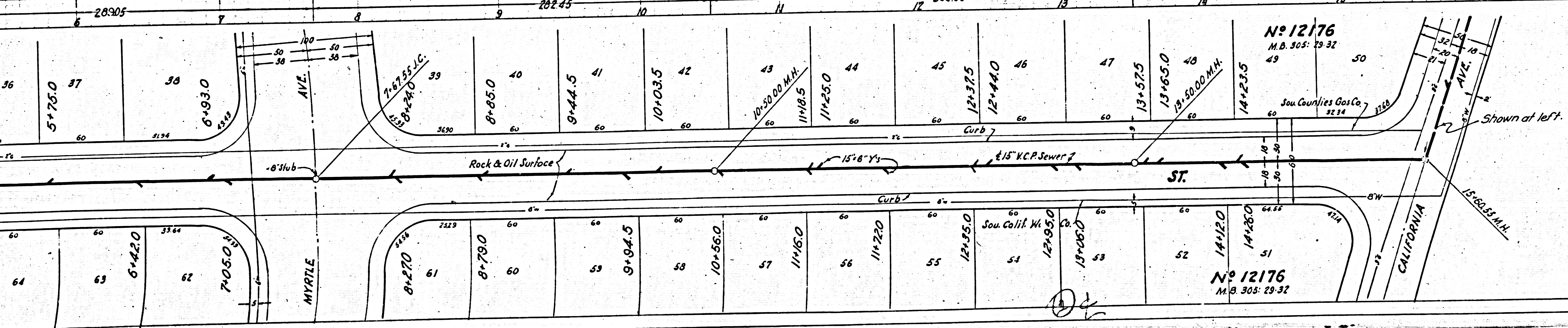
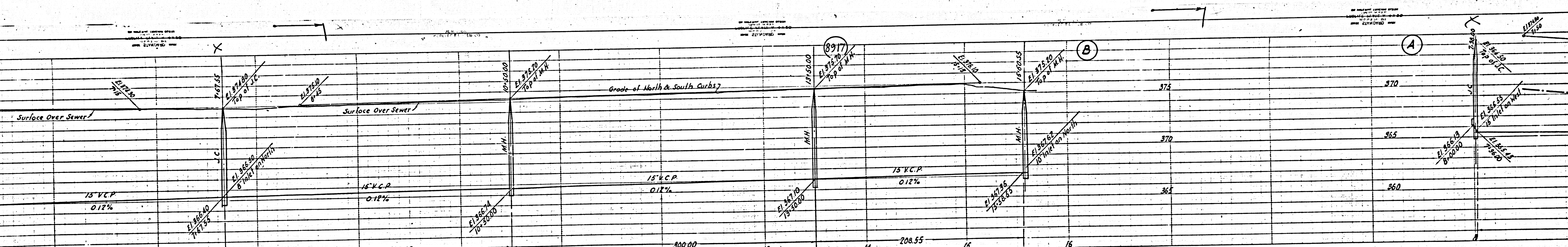
NO 14107  
 M.B. 303: 14-16

0.66 60' Dia. 1000 M.H.  
 Break into existing man  
 and form new manhole  
 in base.

Revised April 24 1948

Revision checked *W.C. Williams* 4-11-49  
 OFFICE OF COUNTY ENGINEER, S.E.C.E. NO. 8708

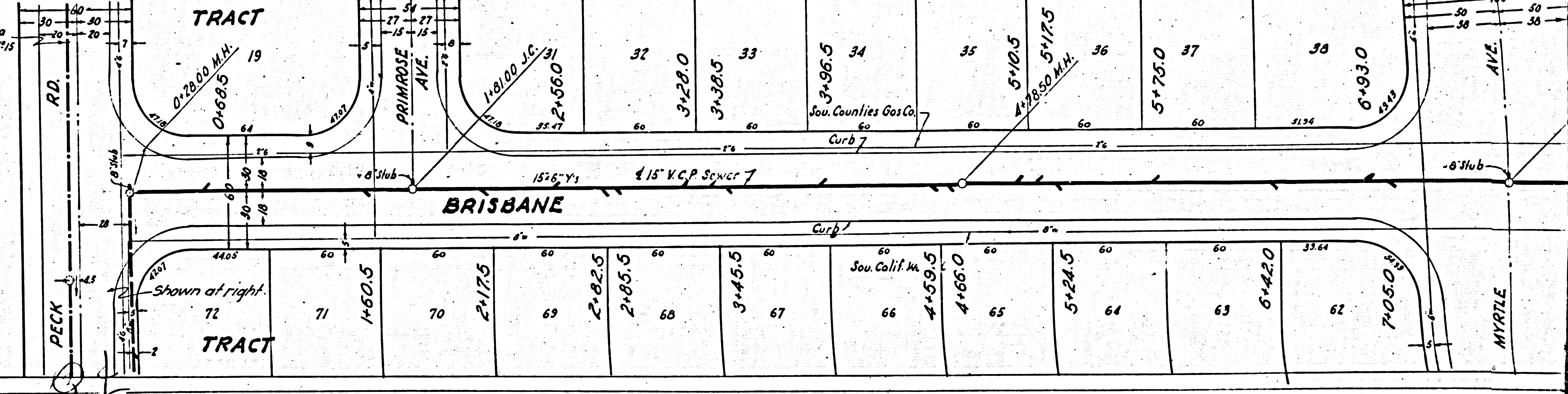
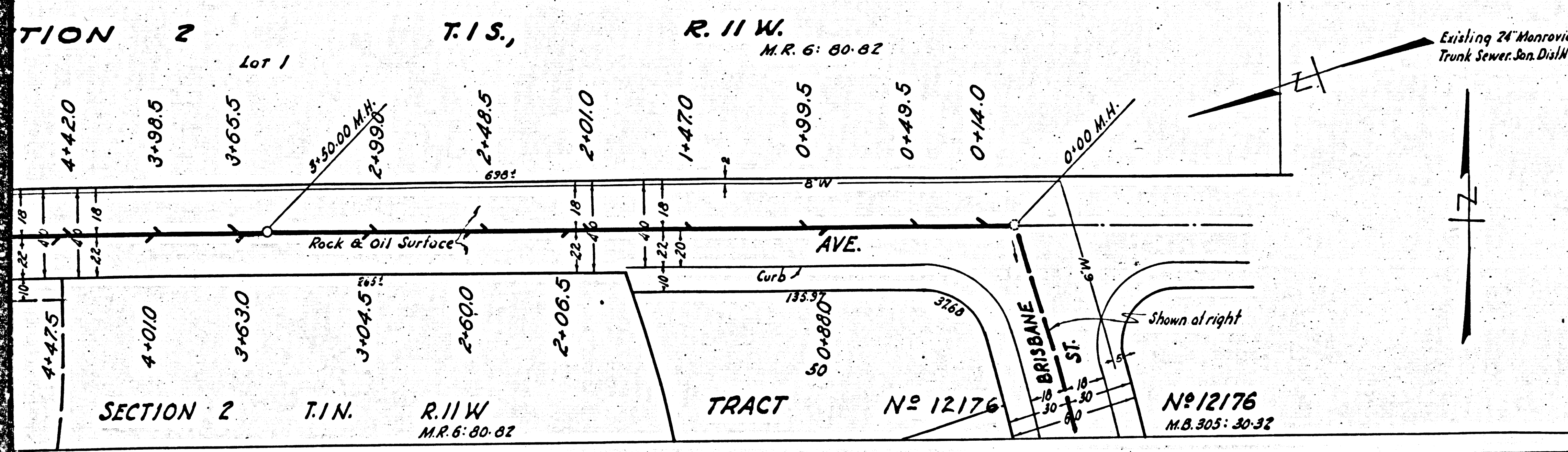
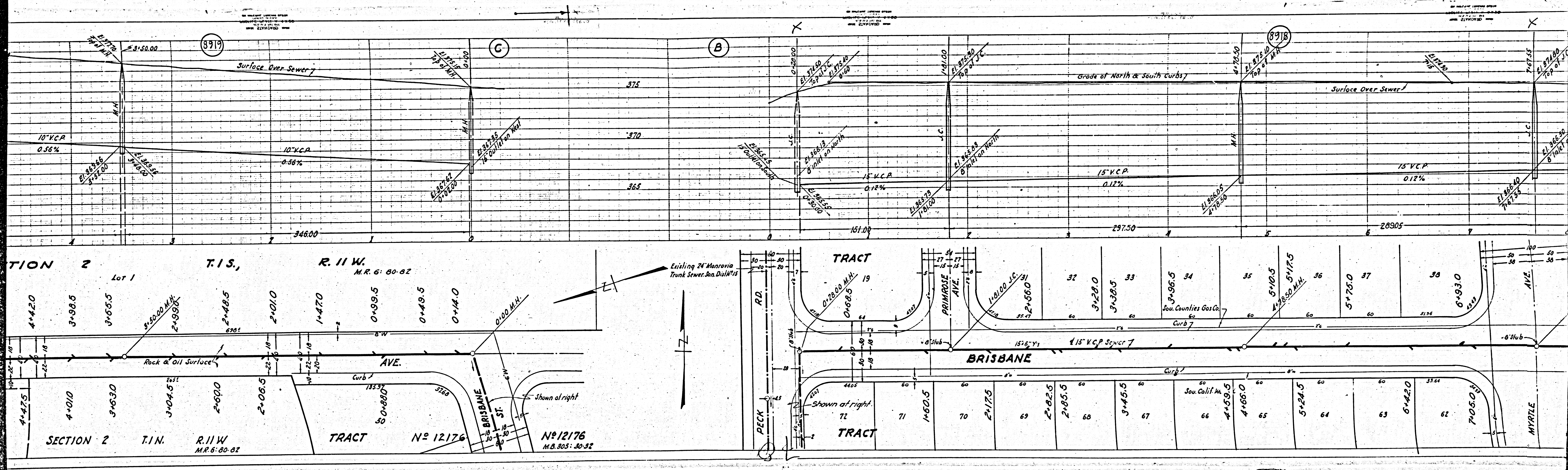
NO 14107

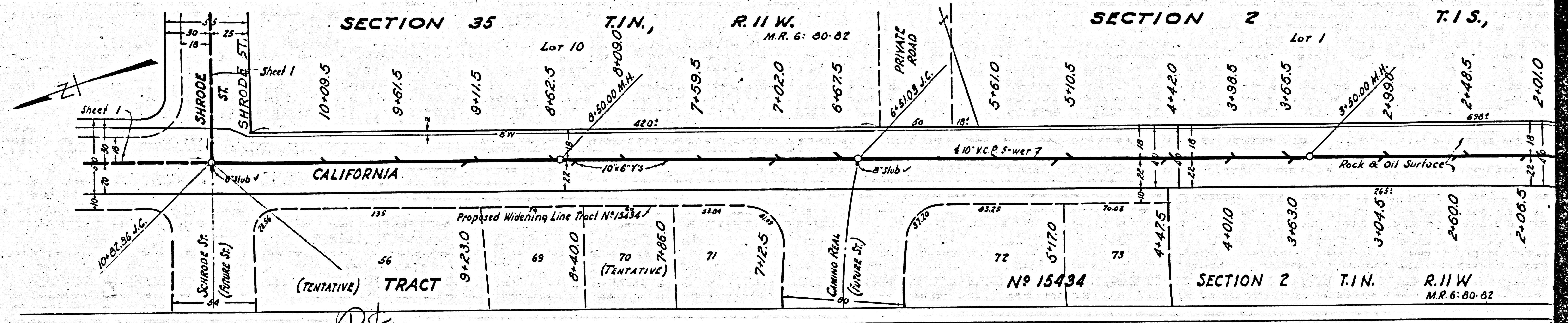
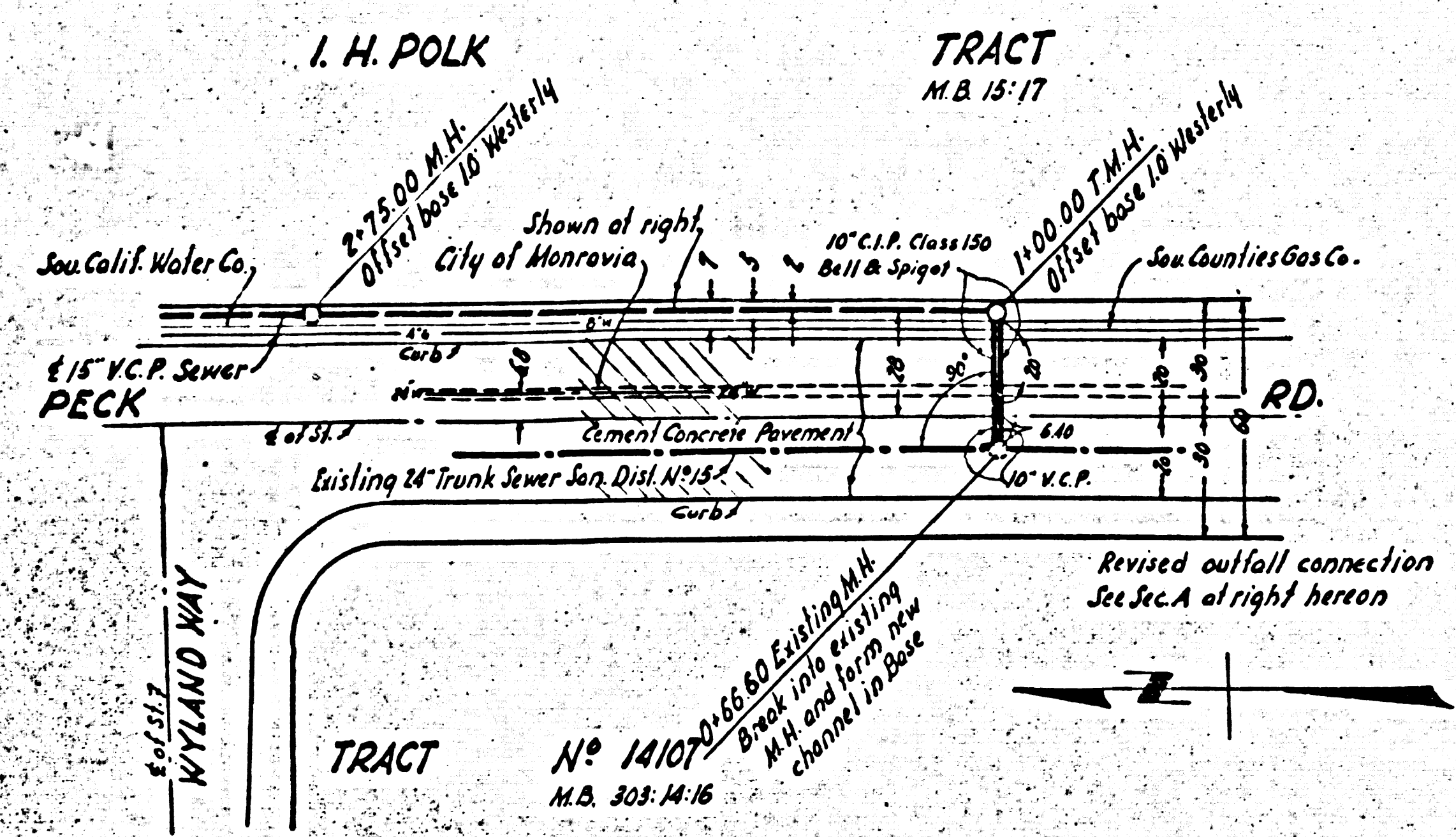
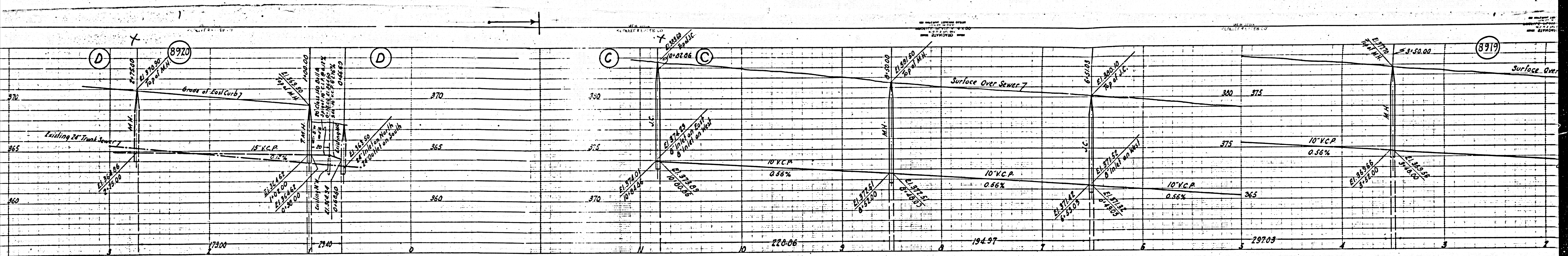


N<sup>o</sup> 12176  
M.B. 305: 29-32

N<sup>o</sup> 12176  
M.B. 305: 29-32

MB





I. H. POLK

TRACT  
M.B. 15-17

SECTION 35 T.I.N., R.11 W. M.R. 6: 80-82

SECTION 2 T.I.S., Lot 1

TRACT No. 14107 M.B. 303-14-16

(TENTATIVE) TRACT No. 15434

SECTION 2 T.I.N. R.11 W. M.R. 6: 80-82