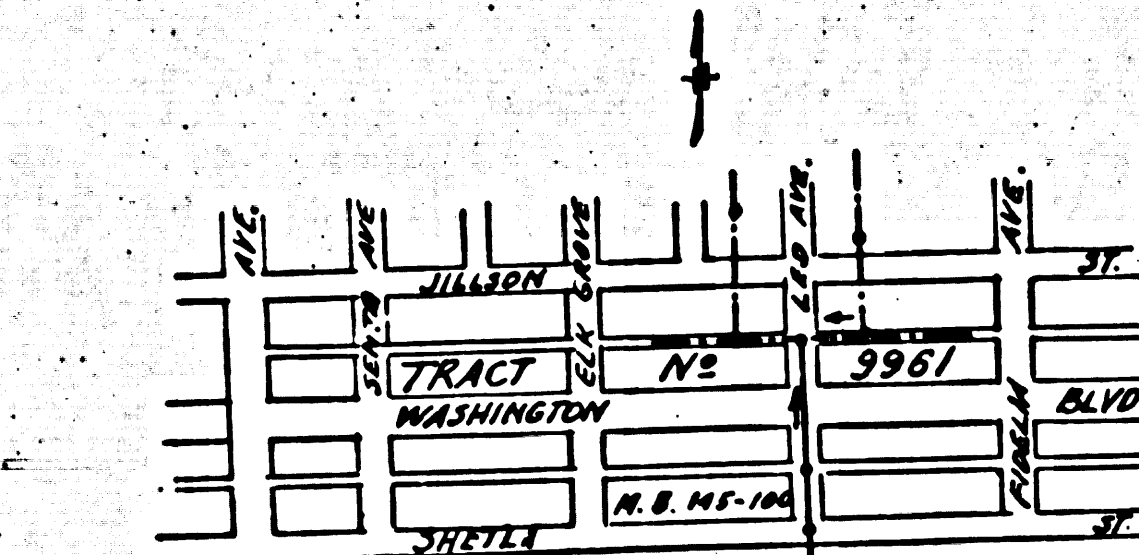


D.M. - 50.460-2, Elev. 143.985
 WASHINGTON BLVD & FIDELIA AVE.
 Lead = 9203

- (1) USE STANDARD MANHOLE FRAME AND COVER 5-3-117.
- (2) USE STANDARD STRENGTH PIPE (EXCEPT AS NOTED).
- (3) USE CEMENT MORTAR FOR ALL VITRIFIED CLAY PIPE JOINTS.
- (4) RESURFACE ALL TRENCH WITHIN PAVED AREA TO MEET LOS ANGELES COUNTY ROAD DEPT. OR CALIFORNIA STATE HIGHWAY REQUIREMENTS.
- (5) ENCASE FOUR FEET OF SEWER AT POINTS OF INTERFERENCE WITH POLES AS PER 5-3-119.
- (6) ALL STRUCTURES SHALL BE BRICK SEWER STRUCTURES, 5-3-104.

NOTE:
 BEFORE ANY CONNECTION FOR THE DISPOSAL OF LIQUID WASTE IS MADE TO THIS SEWER DETAILED PLANS MUST BE SUBMITTED TO AND A PERMIT SECURED FROM THE COUNTY ENGINEER.

NOTE:
 NO REPRESENTATIVE OF THE COUNTY ENGINEER WILL SURVEY OR LAY OUT ANY PORTION OF THE WORK. THE OWNER OR HIS AUTHORIZED REPRESENTATIVE SHALL FURNISH THE COUNTY ENGINEER WITH GRADE SHEETS AND STATIONS OF ALL HOUSE CONNECTIONS AND "Y" BRANCHES AND SHALL PROVIDE STAKES FOR THEM AT THEIR PROPER LOCATIONS WITH STATIONING PLAINLY MARKED. ANY CHANGE OF LOCATION SHALL BE REQUESTED IN WRITING BY THE OWNER OR HIS REPRESENTATIVE. NO REVISION SHALL BE MADE IN THESE PLANS WITHOUT APPROVAL OF THE COUNTY ENGINEER.



INDEX MAP - P.C. 966

Checked - McLean - 8-19-49

PROFILE, ALIGNMENT AND GRADE OF
SANITARY SEWERS
 TO BE CONSTRUCTED IN
LEO AVE.
 BETWEEN ALLEY NORTH OF WASHINGTON BLVD. AND SHEILA ST.

PRIVATE CONTRACT NO. 966

W.S. 36

SHEET 1 OF 1 SHEET

JAN. 1949.

SCALE VERT. 1"=4'

HORIZ. 1"=40'

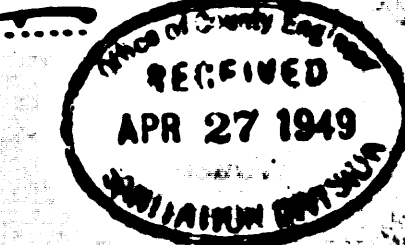
PREPARED IN THE OFFICES OF

WARREN A. ELSTERMAN

BY:

Warren A. Elsterman

REG. C.E. NO. 6164



FOR LEGEND
 SEE PLAN NO. 5-3-64

NOTE:
 GRADES TO WHICH THIS IMPROVEMENT IS TO BE CONSTRUCTED ARE SHOWN ON PLANS AND PROFILE. GRADE POINTS FOR TOP OF CURB, CENTER LINE OF STREET OR CENTER LINE OF ALLEY ARE SHOWN BY CIRCLES ON PROFILES. AT ALL POINTS BETWEEN DESIGNATED POINTS THE GRADE SHALL BE ESTABLISHED SO AS TO CONFORM TO A STRAIGHT LINE OF SLOPE BETWEEN SAID DESIGNATED POINTS. ELEVATIONS ARE IN FEET ABOVE U. S. S. DATUM OR MEAN SEA LEVEL. THIS CONTRACT AND THE DATA HEREON ARE HEREBY MADE A PART OF THE SPECIFICATIONS. WORK SHALL BE CONSTRUCTED ACCORDING TO SPECIFICATIONS ON FILE IN THE OFFICE OF THE COUNTY ENGINEER AND SHALL BE PROSECUTED ONLY IN THE PRESENCE OF THE COUNTY ENGINEER. BEFORE WORK CAN BE STARTED, THE CONTRACTOR MUST OBTAIN A PERMIT TO OCCUPY THE COUNTY STREET FROM THE COUNTY ENGINEER. 100 POUND LEAD BUILDING SUPPORTS SHALL BE PROVIDED WITH THE COUNTY ENGINEER. A PERMIT MUST BE OBTAINED FROM THE STATE OF CALIFORNIA DIVISION OF HIGHWAYS, 808 STATE BUILDING, AFTER MAKING THE DEPOSIT WITH THE COUNTY ENGINEER. COUNTY OF LOS ANGELES, CALIFORNIA.

APPROVED FOR THE COLLECTION OF LIQUID INDUSTRIAL WASTE: *Warren A. Elsterman*
 COUNTY ENGINEER

APPROVED: *Warren A. Elsterman*
 COUNTY ENGINEER

CHECKED BY: *Walter C. McLean* 1-21-1949
 OFFICE OF COUNTY ENGINEER, ROOM 2210, 222

Trim Prints to this Line

