

11,546

(1) USE STANDARD MANHOLE FRAME AND COVER, 30" DIA.
 (2) USE STANDARD REINFORCED CONCRETE RISE SEWER LINES AND MAINS.
 (3) USE 4" CEMENT MORTAR FOR ALL VITRIFIED CLAY PIPE JOINTS.
 (4) REINFORCE ALL TRENCH WITHIN 10 FEET OF STREET LOS ANGELES COUNTY ROAD DEPT. REQUIREMENTS.
 (5) CONTRACTOR SHALL CONNECTIONS WITH INVERT AT PROPERTY LINE (5) FEET BEYOND CURB OR SIDEWALK TO STREET.
 (6) ENLARGE FOUND FEET OF SEWER AT JOINTS OR INTERSECTIONS WITH POLES WHEREVER THE SEWER IS TO BE ABANDONED AND TO BE REPLACED WITH NEW SEWER LINES.
 (7) ALL STRUCTURES SHALL BE BUILT TO MEET LOS ANGELES COUNTY ROAD DEPT. REQUIREMENTS.
 (8) CONTRACTOR SHALL BE RESPONSIBLE FOR OBTAINING ALL NECESSARY PERMITS FROM THE COUNTY ENGINEER AND THE CITY ENGINEER AND SHALL BE RESPONSIBLE FOR OBTAINING ALL NECESSARY PERMITS FROM THE CITY ENGINEER AND THE COUNTY ENGINEER.
 (9) CONTRACTOR SHALL BE RESPONSIBLE FOR OBTAINING ALL NECESSARY PERMITS FROM THE CITY ENGINEER AND THE COUNTY ENGINEER.
 (10) CONTRACTOR SHALL BE RESPONSIBLE FOR OBTAINING ALL NECESSARY PERMITS FROM THE CITY ENGINEER AND THE COUNTY ENGINEER.
 (11) CONTRACTOR SHALL BE RESPONSIBLE FOR OBTAINING ALL NECESSARY PERMITS FROM THE CITY ENGINEER AND THE COUNTY ENGINEER.
 (12) CONTRACTOR SHALL BE RESPONSIBLE FOR OBTAINING ALL NECESSARY PERMITS FROM THE CITY ENGINEER AND THE COUNTY ENGINEER.
 (13) CONTRACTOR SHALL BE RESPONSIBLE FOR OBTAINING ALL NECESSARY PERMITS FROM THE CITY ENGINEER AND THE COUNTY ENGINEER.
 (14) CONTRACTOR SHALL BE RESPONSIBLE FOR OBTAINING ALL NECESSARY PERMITS FROM THE CITY ENGINEER AND THE COUNTY ENGINEER.
 (15) CONTRACTOR SHALL BE RESPONSIBLE FOR OBTAINING ALL NECESSARY PERMITS FROM THE CITY ENGINEER AND THE COUNTY ENGINEER.
 (16) CONTRACTOR SHALL BE RESPONSIBLE FOR OBTAINING ALL NECESSARY PERMITS FROM THE CITY ENGINEER AND THE COUNTY ENGINEER.
 (17) CONTRACTOR SHALL BE RESPONSIBLE FOR OBTAINING ALL NECESSARY PERMITS FROM THE CITY ENGINEER AND THE COUNTY ENGINEER.
 (18) CONTRACTOR SHALL BE RESPONSIBLE FOR OBTAINING ALL NECESSARY PERMITS FROM THE CITY ENGINEER AND THE COUNTY ENGINEER.
 (19) CONTRACTOR SHALL BE RESPONSIBLE FOR OBTAINING ALL NECESSARY PERMITS FROM THE CITY ENGINEER AND THE COUNTY ENGINEER.
 (20) CONTRACTOR SHALL BE RESPONSIBLE FOR OBTAINING ALL NECESSARY PERMITS FROM THE CITY ENGINEER AND THE COUNTY ENGINEER.

BENCHMARK
 T. Block MARK ELK 122.210
 Cut Sp. in Conc. Monument
 E. Inter. Normande & 120th St.

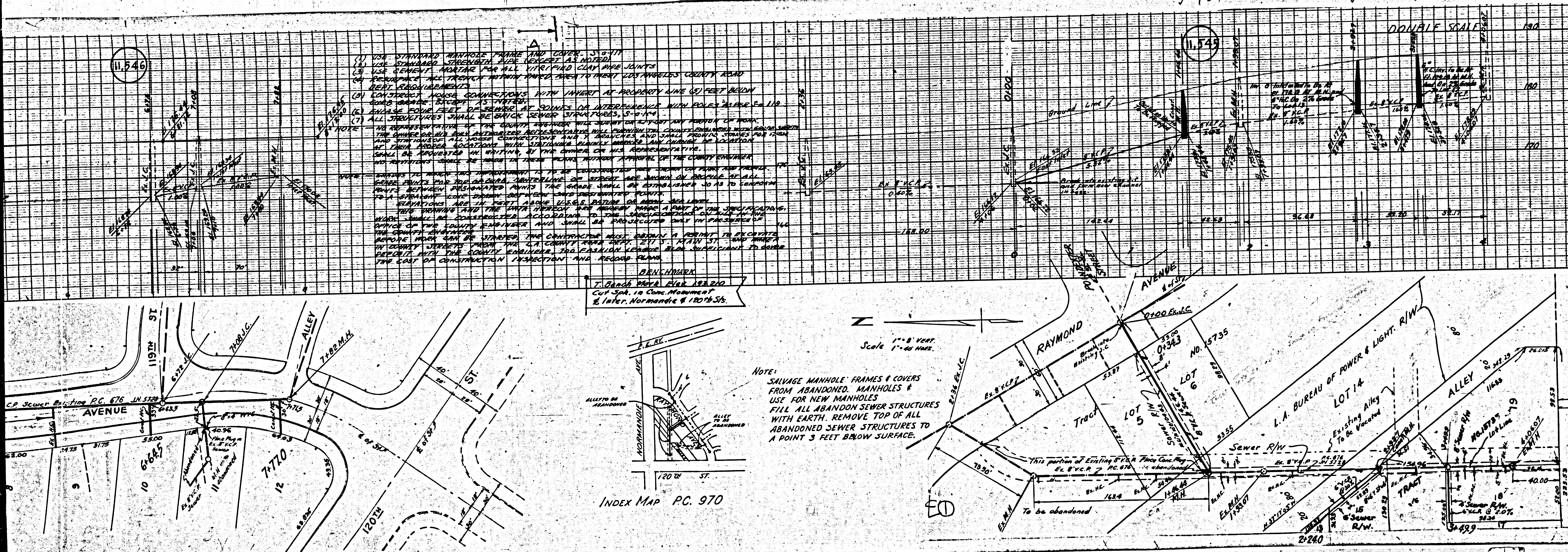
Scale 1" = 40 Feet

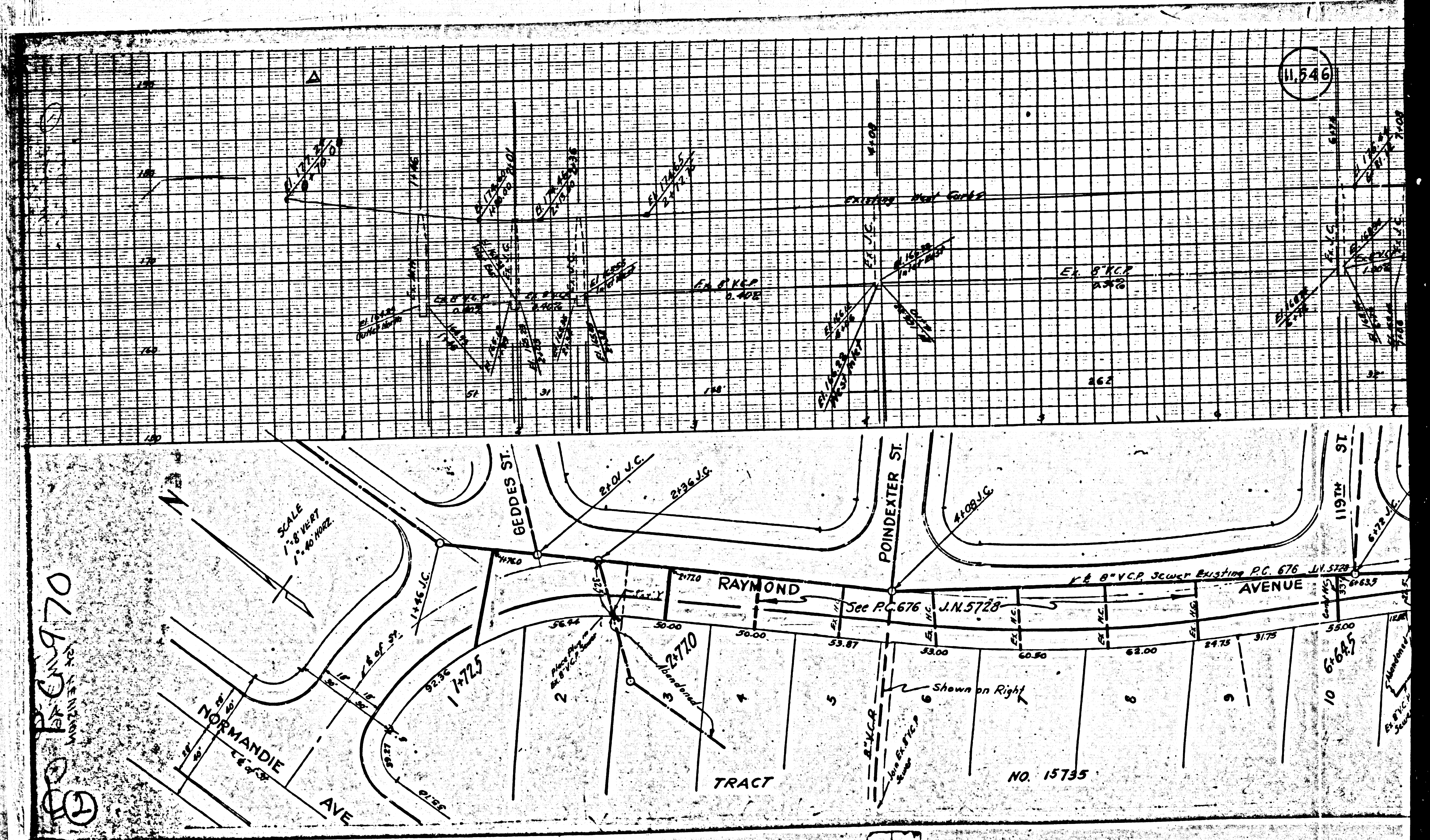
Note:
 SALVAGE MANHOLE FRAMES & COVERS FROM ABANDONED MANHOLES & USE FOR NEW MANHOLES
 FILL ALL ABANDONED SEWER STRUCTURES WITH EARTH. REMOVE TOP OF ALL ABANDONED SEWER STRUCTURES TO A POINT 3 FEET BELOW SURFACE.

INDEX MAP PC. 970

APPROVED
 COUNTY ENGINEER
 SANITARY DIST. NO. 1
 SHEET NO. 1 OF 1
 SCALE 1" = 40 FEET
 FEB 15 1959

COUNTY OF LOS ANGELES
 OFFICE OF COUNTY ENGINEER
 SANITARY DIST. NO. 1
 REVISION CHECKED
 FEB 15 1959





①
 PC 676
 JIN 5728

11,546

M8

M8