

PRINT →

← PRINT

1. Use Standard Manhole Frames and Covers, S-a-117. Except as noted.
2. Use Standard Strength Pipe, except as noted.
3. Use Cement mortar for all vitrified clay pipe joints.
4. All structures shall be brick sewer structures, S-a-104. Except as noted.
5. Resurface all trench within paved area to meet L.A. County Road Department requirements.
6. Construct House Connections with invert at Property Line 4 feet below curb grade.
7. In case of feet of sewer at points of interference with Poles as per S-a-119.

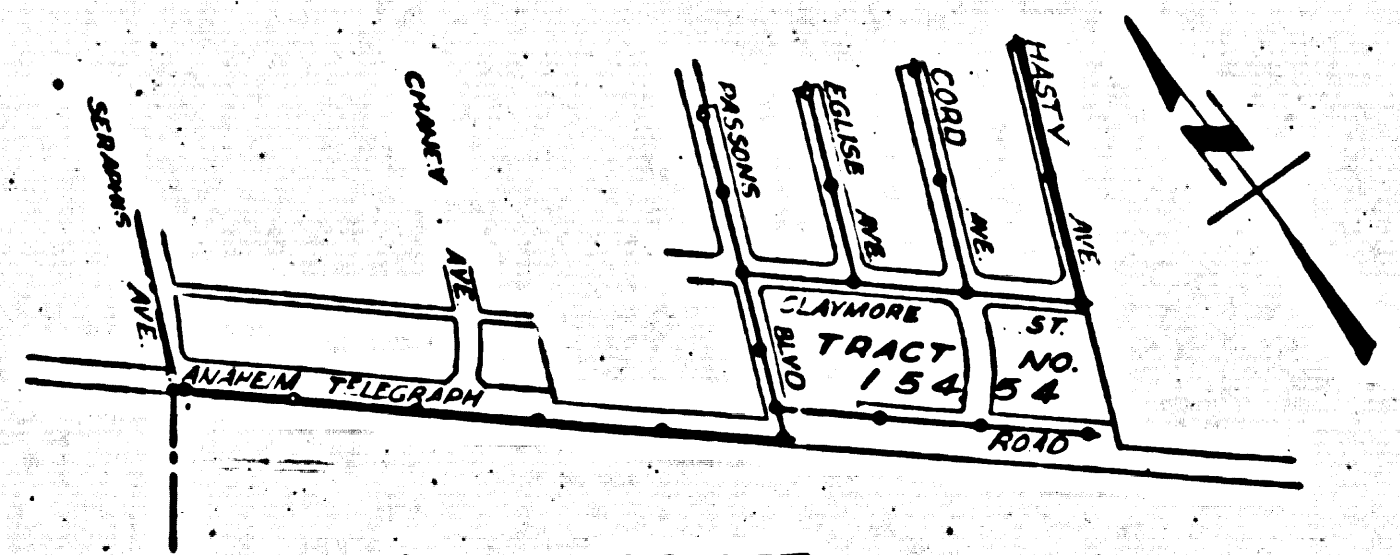
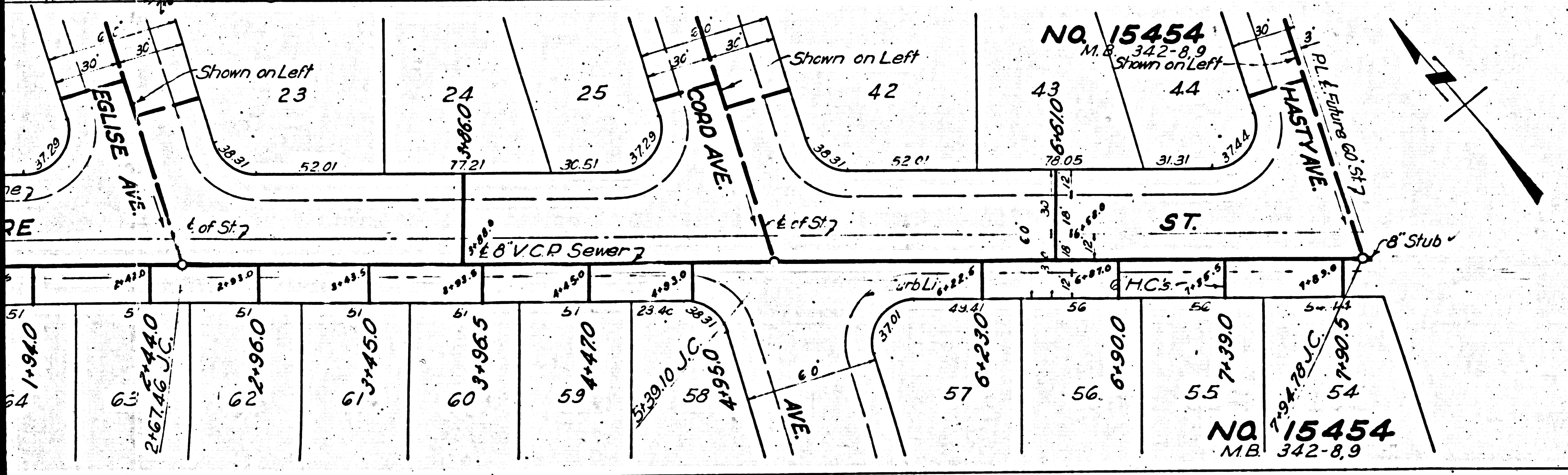
B.M. Elev. 139.74 Bolt spike in
 P.P. # 552306 F. on Claymore St
 175 W. of Lemoran Ave.

NOTE:
 No representative of the County Engineer will survey or lay out any portion of the work.
 The owner or his authorized representative shall furnish the County Engineer with grade
 sheets and stations for all house connections and branches and shall provide stakes for them
 at their proper locations with stationing plainly marked. Any change in locations shall be requested
 in writing by the owner or his representative.
 No revisions shall be made in these plans without approval of the County Engineer.

PROFILE ALIGNMENT AND GRADE OF
SANITARY SEWERS
 TO BE CONSTRUCTED IN
CLAYMORE STREET
 FROM PASSONS BLVD. TO HASTY AVE.
HASTY AVENUE
 FROM CLAYMORE ST. TO 600 N. OF CLAYMORE ST.
CORD AVENUE
 FROM CLAYMORE ST. TO 500 N. OF CLAYMORE ST.
GLISE AVENUE
 FROM CLAYMORE ST. TO 130 N. OF CLAYMORE ST.
PASSONS BOULEVARD
 FROM ANAHEIM TELEGRAPH RD. TO 500 N. OF CLAYMORE ST.
ANAHEIM TELEGRAPH ROAD
 FROM SERAPHIS AVE. TO HASTY AVENUE.

PRIVATE CONTRACT NO. 977
 W.S. 36 FEB. 1949

SCALES
 HORIZ. 1" = 40'
 VERT. 1" = 4'
SHEET 1 OF 1 SHEET
 PREPARED IN THE OFFICE OF
KARL F. TUTTLE



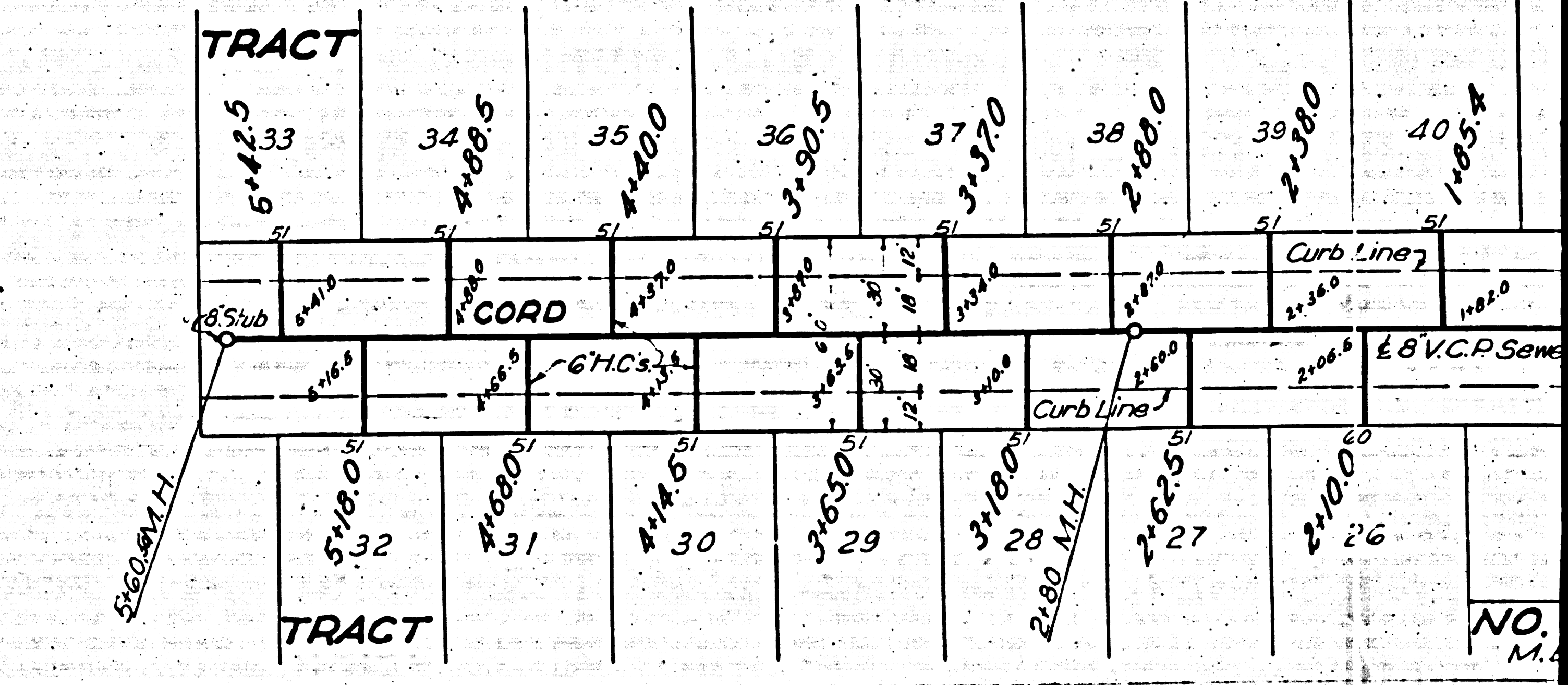
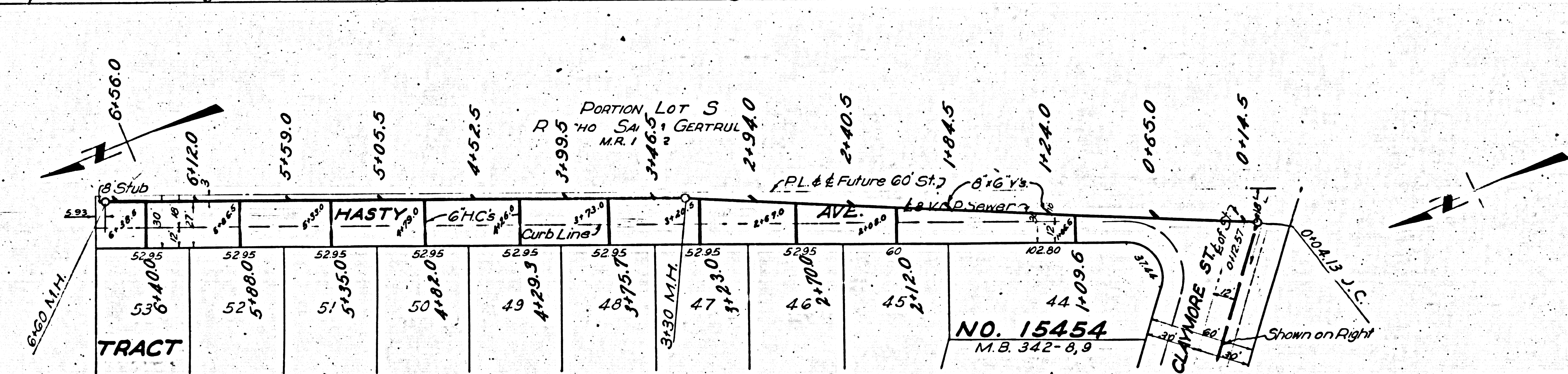
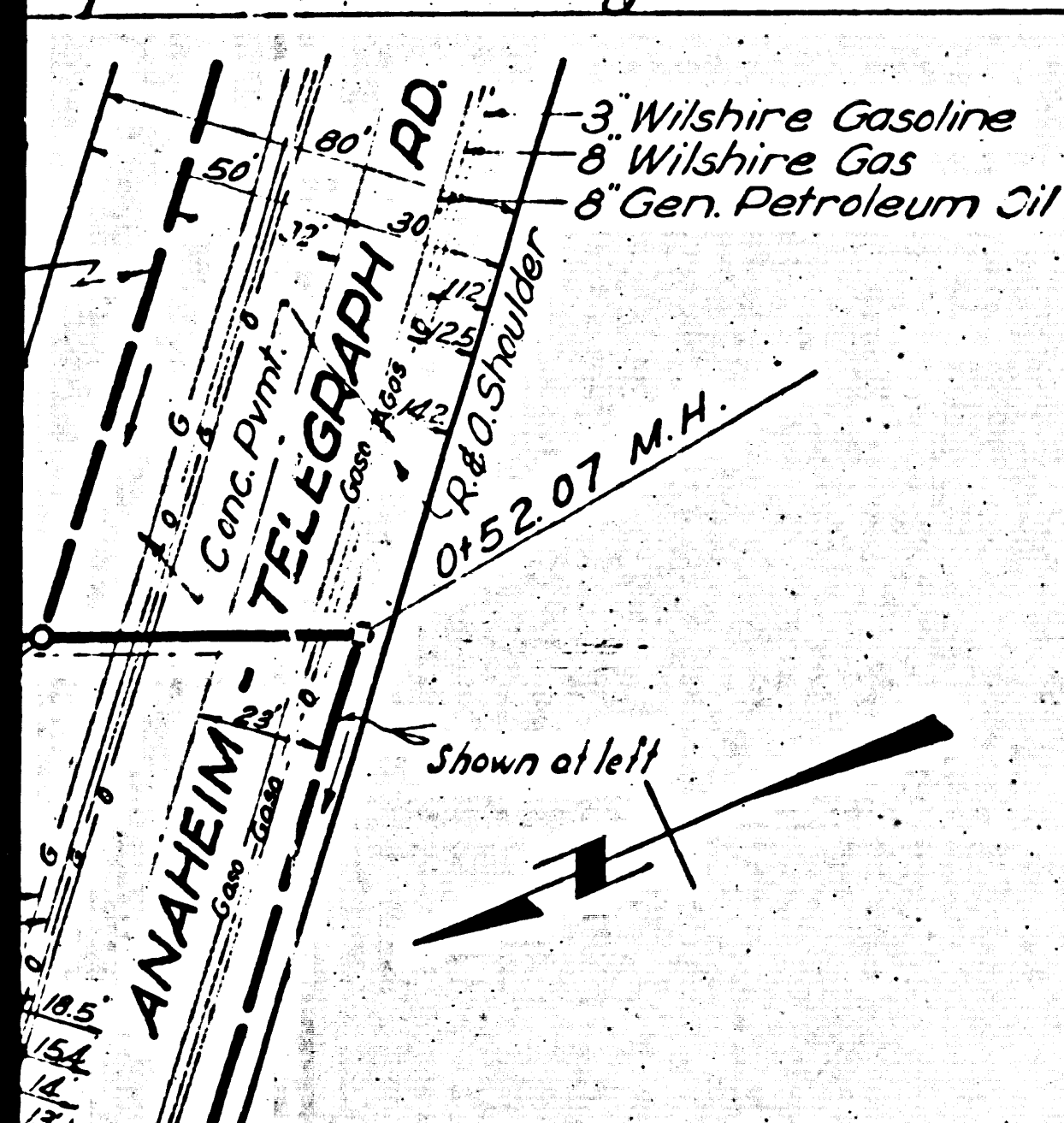
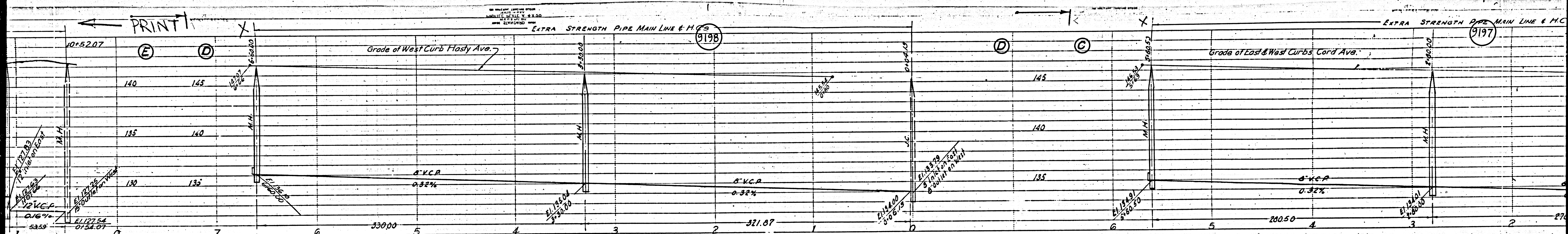
NOTE:
 Grades to which this improvement is to be constructed are shown on Plans and Profiles.
 Grade points for top of curb, center line of street or center line of alley are shown by circles on
 Profiles. At all points between designated points the grade shall be established so as to conform to
 a straight line drawn between said designated points.
 Elevations are in feet above U.S.C.S. datum or mean sea level.
 This drawing and the data hereon are hereby made a part of the specifications.
 Work shall be constructed according to specifications on file in the office of the County
 Engineer and shall be prosecuted only in the presence of the County Engineer.
 Before work can be started the contractor must obtain a permit to excavate in County Streets
 from the L.A. County Road Dept., 211 So. Main St., and make a deposit with the County Engineer,
 County Engineering Bldg. sufficient to cover the cost of construction inspection and record plans.
 If work is to be done in a State Highway, a permit must be obtained from the State of California
 Division of Highways, 908 State Bldg. after making the deposit with the County Engineer.

COUNTY OF LOS ANGELES, CALIFORNIA

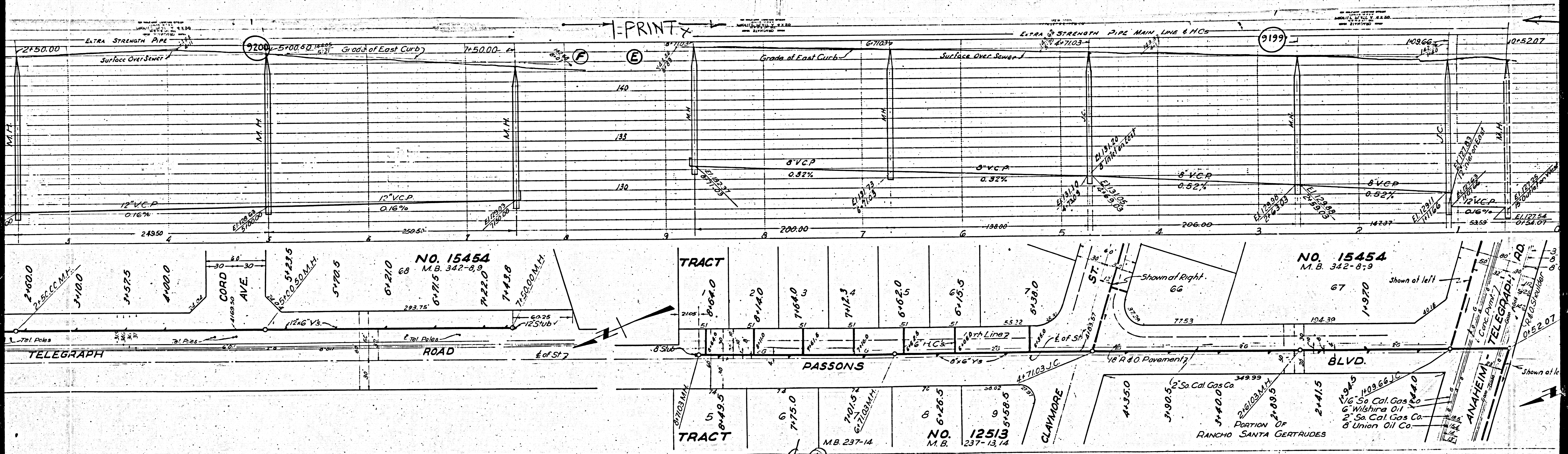
APPROVED *[Signature]*
 COUNTY ENGINEER
 RECEIVED
 MAY 27 1949
 DIVISION OF HIGHWAYS
 APPROVED *[Signature]*
 CHIEF ENGINEER OF COUNTY
 SANITATION DISTRICT NO. 2
 CHECKED BY *[Signature]* 5-4-1949
 Office of County Engineer, R.E. 3205

ANAHEIM TELEGRAPH ROAD SHEET 1
 CLAYMORE ST. HASTY AVE. PASSONS BLVD. CORD AVE. GLISE AVE. W.S. 36
 FEB. 1949

EO



③



-PRINT-

TRACT

TRACT

NO. 15454
M.B. 342-8,9

NO. 15454
M.B. 342-8,9

NO. 12513
M.B. 237-13,14

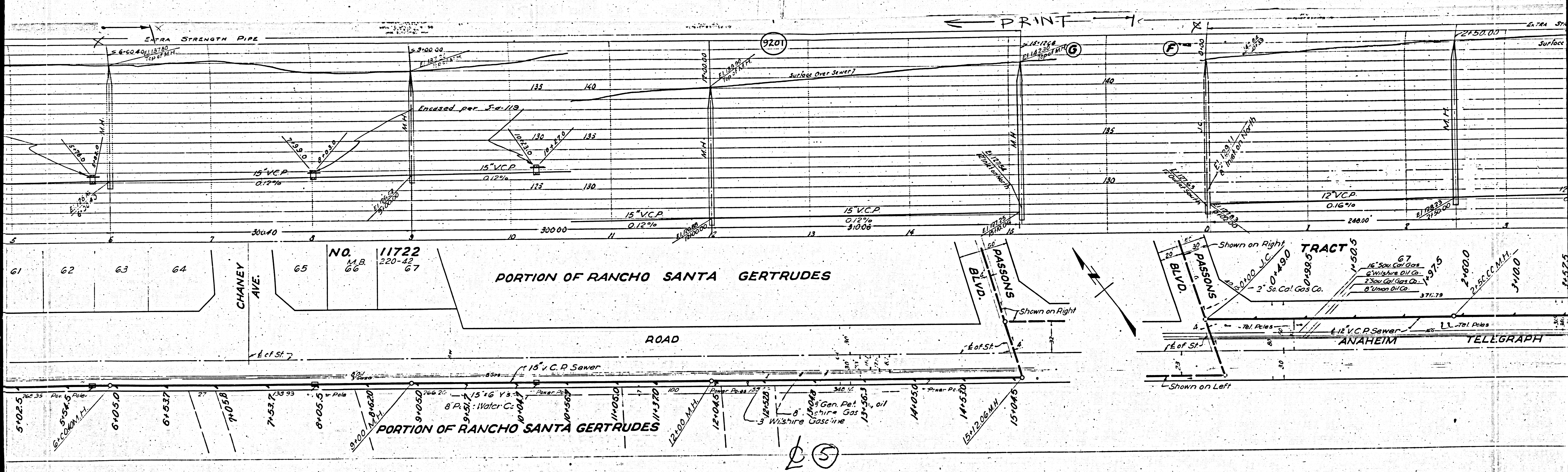
PORTION OF
RANCHO SANTA GERTRUDES

ANAHAIM
TELEGRAPH RD

ⓁⓅ

M3

M5



← PRINT →

PORTION OF RANCHO SANTA GERTRUDES

ROAD

PORTION OF RANCHO SANTA GERTRUDES

TRACT

ANAHEIM TELEGRAPH

NO. 11722
M.B. 220-42
66 67

CHANEY AVE.

PASSONS BLVD.

PASSONS BLVD.

61 62 63 64

16" S.C. Gas
6" W. Gas
2" S.C. Gas
8" W. Gas
371.79

5+02.5
5+54.5
6+05.0
6+53.7
7+05.8
7+53.7
8+05.5
8+53.7
9+05.0
9+53.7
10+05.0
10+53.7
11+05.0
11+53.7
12+05.0
12+53.7
13+05.0
13+53.7
14+05.0
14+53.7
15+05.0

(5)

M3

