

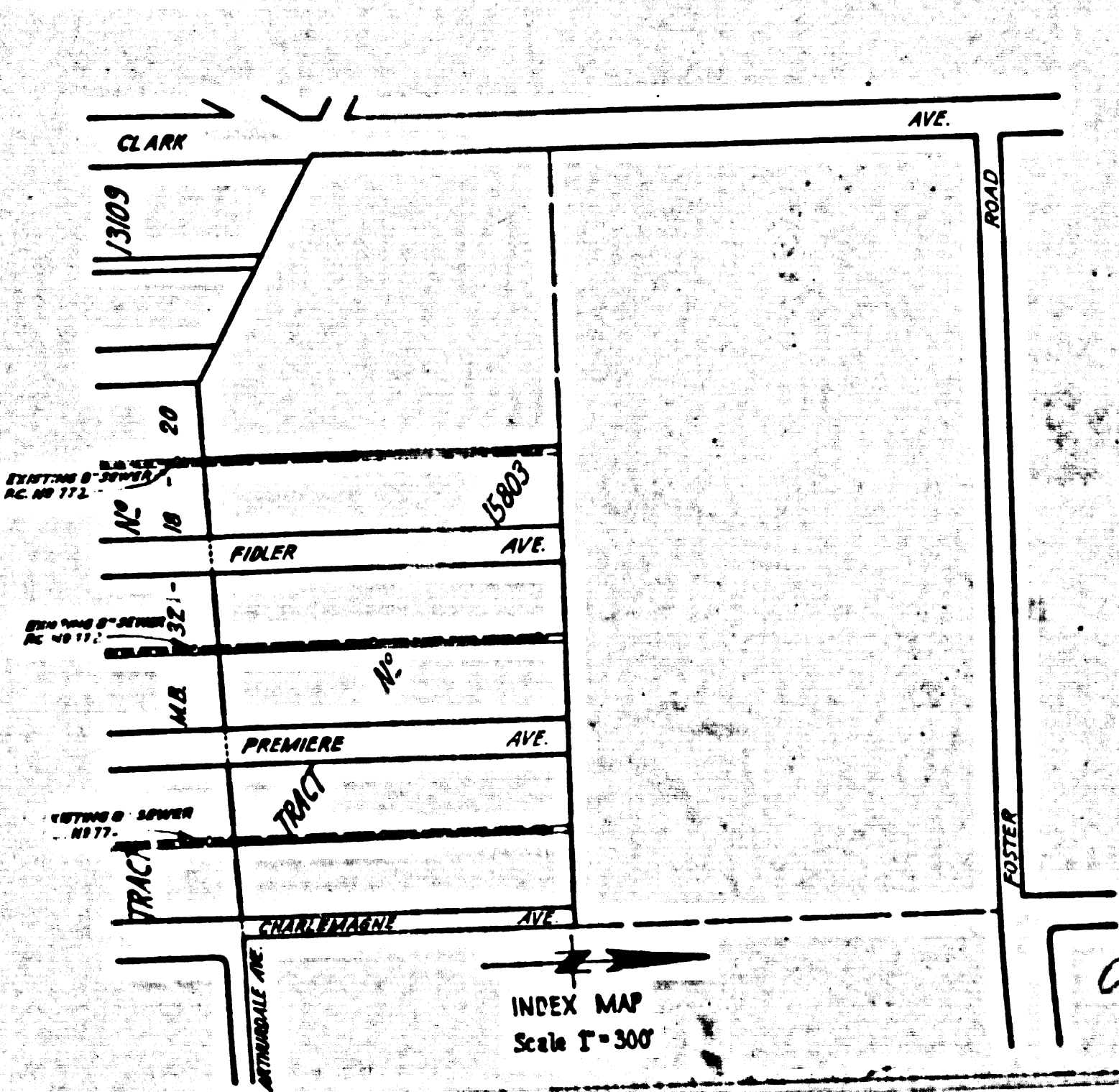
- (1) USE STANDARD MANHOLE FRAMES AND COVERS 5'-11\"/>
 - (2) USE STANDARD STRENGTH PIPE
 - (3) USE CEMENT ASPHALT FOR ALL VITRIFIED CLAY PIPE JOINTS
 - (4) INSURANCE TRENCH WITHIN PAVED AREAS TO MEET LOS ANGELES COUNTY ROAD DEPT. REPAIR SPECIFICATIONS
 - (5) ENCASE FOUR FEET OF SEWER AT POINTS OF INTERFERENCE WITH PALES 5'-0\"/>
 - (6) ALL STRUCTURES SHALL BE BRICK SEWER STRUCTURES 5'-0\"/>
 - (7) CONSTRUCT TOPS OF ALL STRUCTURES IN RIGHTS OF WAY 6\"/>
- NOTE: No representative of the County Engineer will survey or lay out the location of the work.
The owner or his authorized representative shall furnish the County Engineer with grade stakes and stations of all structures and Y-brackets and shall provide stakes for manholes and Y-brackets with structures clearly marked by change of location. No revision shall be made in these plans without approval of the County Engineer.

PROFILE ALIGNMENT AND GRADE OF
SANITARY SEWERS
 TO BE CONSTRUCTED IN
SANITARY SEWER RIGHTS OF WAY
 IN TRACT NO. 13109
 TRACT NO. 15803
 PRIVATE CONTRACT NO. 980
 W.S. 33
 SHEET 1 OF 1 SHEET

SCALE: HORIZ. 1"=40'
 VERT. 1"=4'

PREPARED IN THE OFFICE OF C. E. YOST

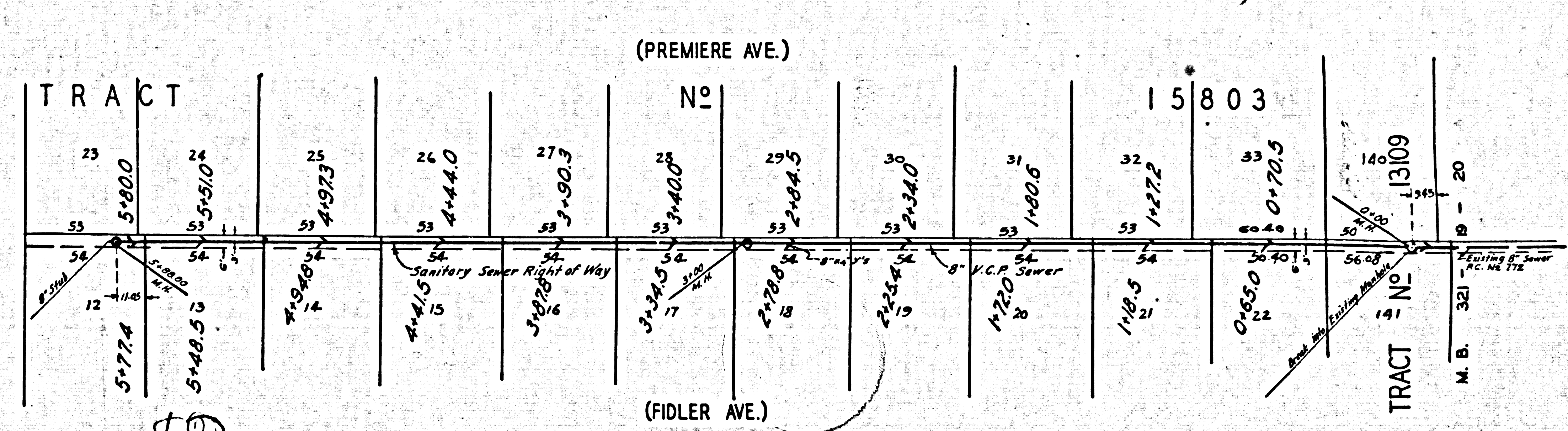
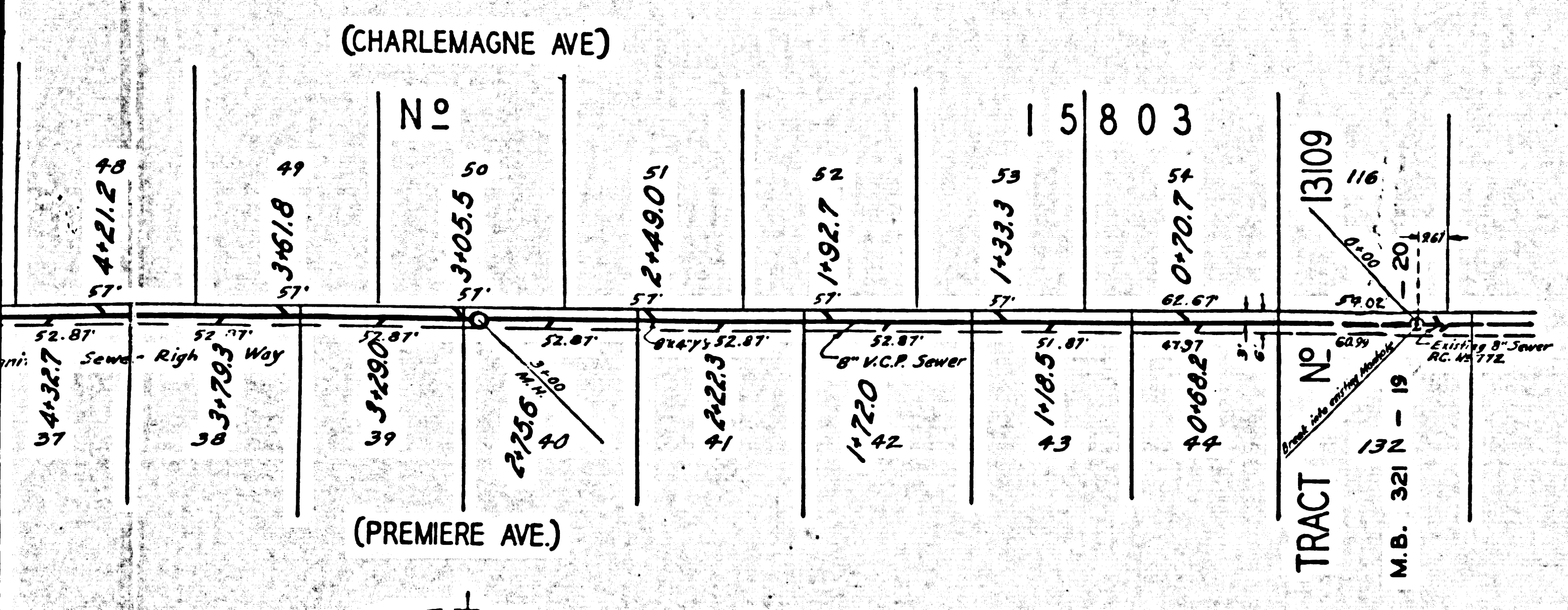
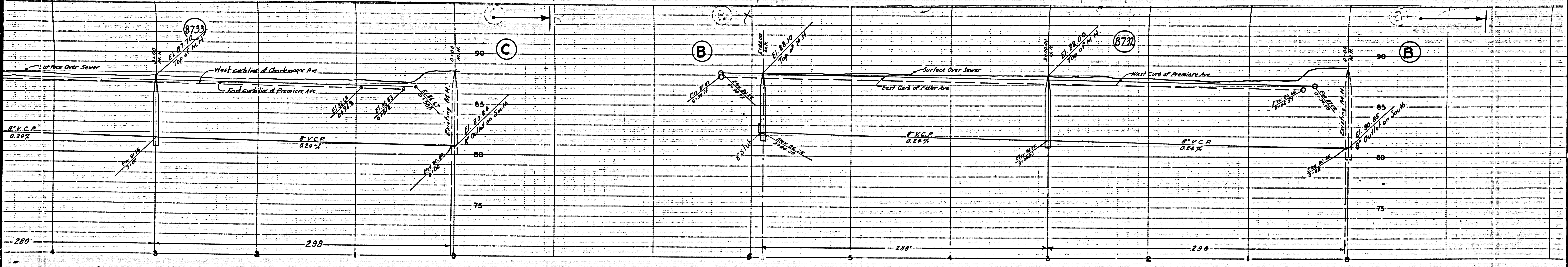
ALL structures in concrete 18" diam of N.W. Co. (Lot 167), Tract No. 13109 E.S. 9-112 L.A. County Road Dept. P.A. 163-2



RECEIVED
 FEB 11 1949
 FOR LEGEND
 SEE PLAN NO. 3-98

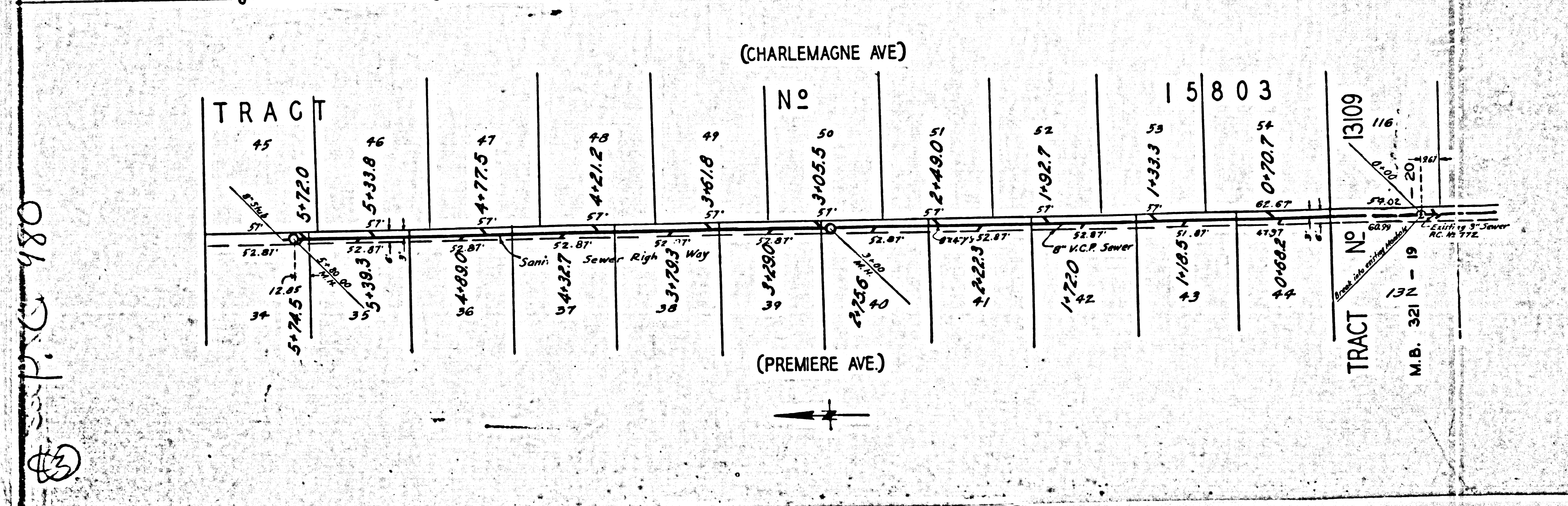
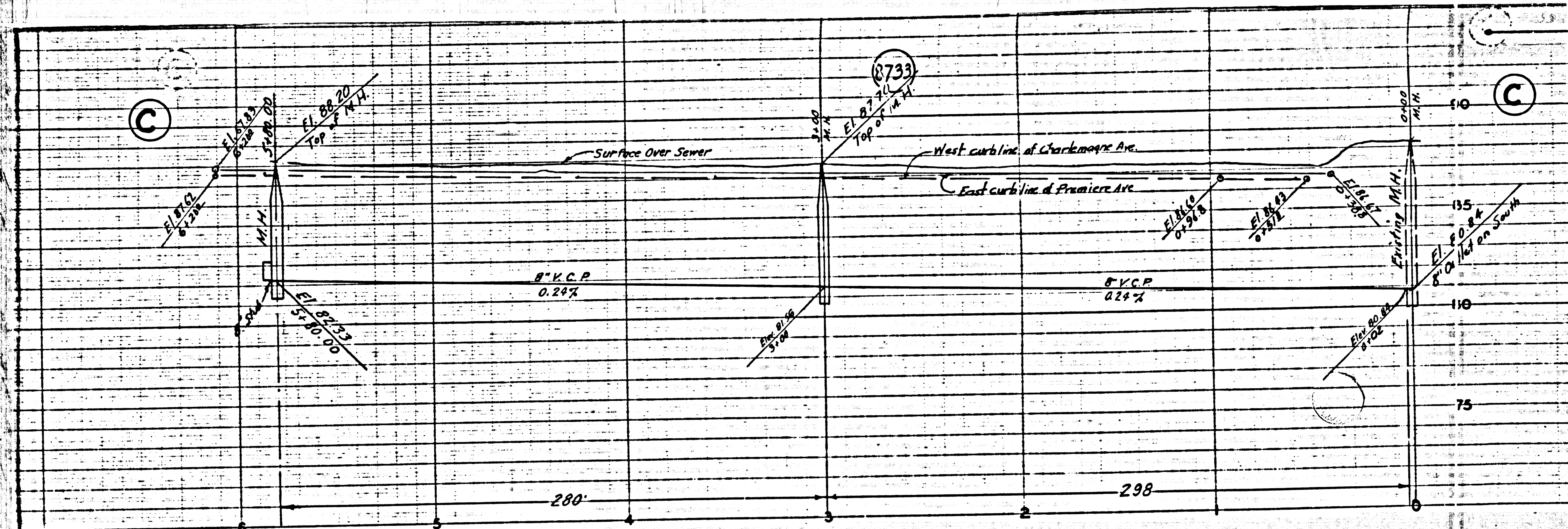
NOTE:
 Grades to which this improvement is to be constructed are shown on plan and profile.
 Grade points for top of curb, center line of street or center line of alley are shown by circles on profiles. At all points between designated points the grade shall be established so as to conform to a straight line drawn between said designated points.
 Elevations are in feet above U.S.S. datum or mean sea level.
 This drawing and the data hereon are hereby made a part of the specifications.
 Work shall be constructed according to specifications on file in the office of the County Engineer and shall be prosecuted only in the presence of the County Engineer.
 Before work can be started, the contractor must obtain a permit to excavate in County streets from the L.A. County Road Dept., 211 S. Main St., and make a deposit with the County Engineer, 700 Fashion League Bldg., sufficient to cover the cost of construction inspection and record plans.

COUNTY OF LOS ANGELES, CALIFORNIA
 APPROVED *[Signature]*
 CHIEF DEPUTY COUNTY ENGINEER
 APPROVED *[Signature]*
 CHIEF ENGINEER OF COUNTY SANITARY DISTRICT NO. 2
 Checked - *[Signature]* - 3-24-49 CHECKED *[Signature]*
 OFFICE OF COUNTY ENGINEER, 700 FASHION LEAGUE BLDG., LOS ANGELES, CALIF.



M.B.

M.B.



880
 880
 880

M3

M3