

1. Use Standard Manhole Frames and Covers, S-a-117
2. Use Extra-Strength Pipe.
3. Use Cement Mortar for all Vitrified Clay Pipe Joints.
4. Resurface all trenches within Road Area to meet L.A. County Road Dept. requirements.
5. Excise four feet of Sewer at points of interference with Poles as per S-a-119
6. All Structures shall be Brick Sewer Structures S-a-104 except as noted

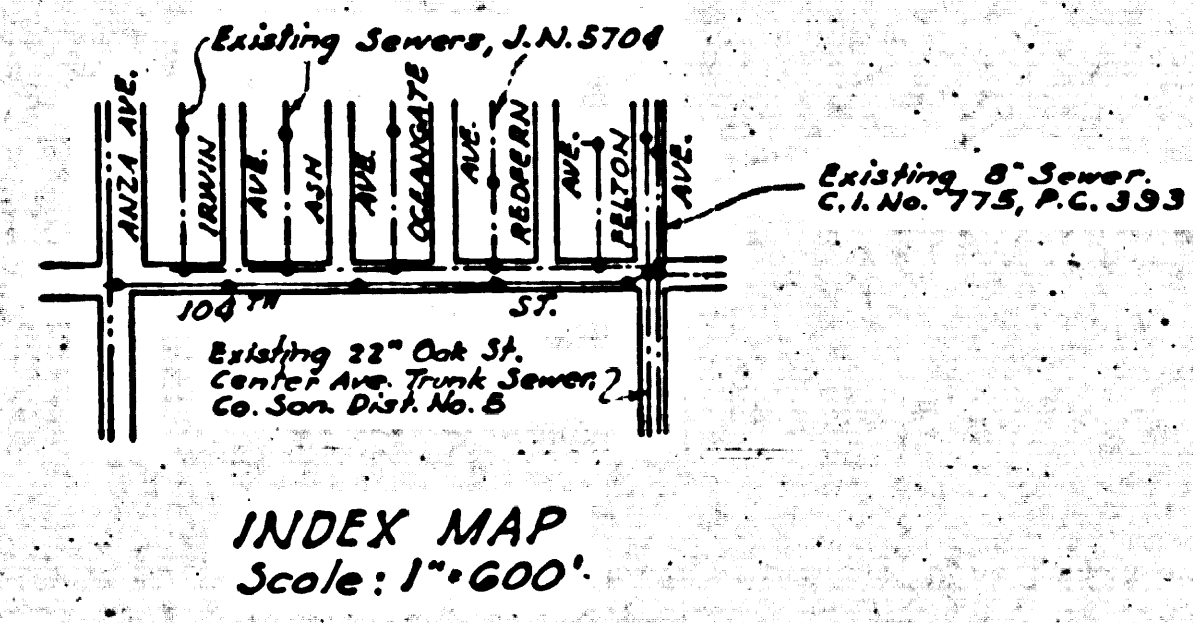
PROFILE ALIGNMENT AND GRADE OF  
**SANITARY SEWERS**  
 TO BE CONSTRUCTED IN  
**104<sup>TH</sup> STREET**  
 BETWEEN FELTON AVE & ANITA AVE

PRIVATE CONTRACT No. 385  
 W.S. 26  
**SHEET 1 OF 1 SHEET**  
 Scale: Vert. 1" = 4'  
 Horiz. 1" = 40'  
 Jan. 1949  
**PREPARED IN THE OFFICES OF**  
**SEABOARD ENGINEERING CO.**

NOTE: No representative of the County Engineer will survey or lay out any portion of the work. The owner or his authorized representative shall furnish the County Engineer with Grid Sheets and Stations for all House Connections and V. Resections and shall provide stakes for these of their proper locations with staking plainly marked. Any change of location shall be requested in writing by the owner or his representative. No revisions shall be made in these Plans without approval of the County Engineer.

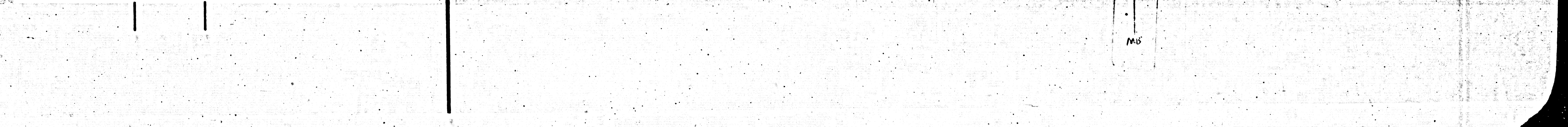
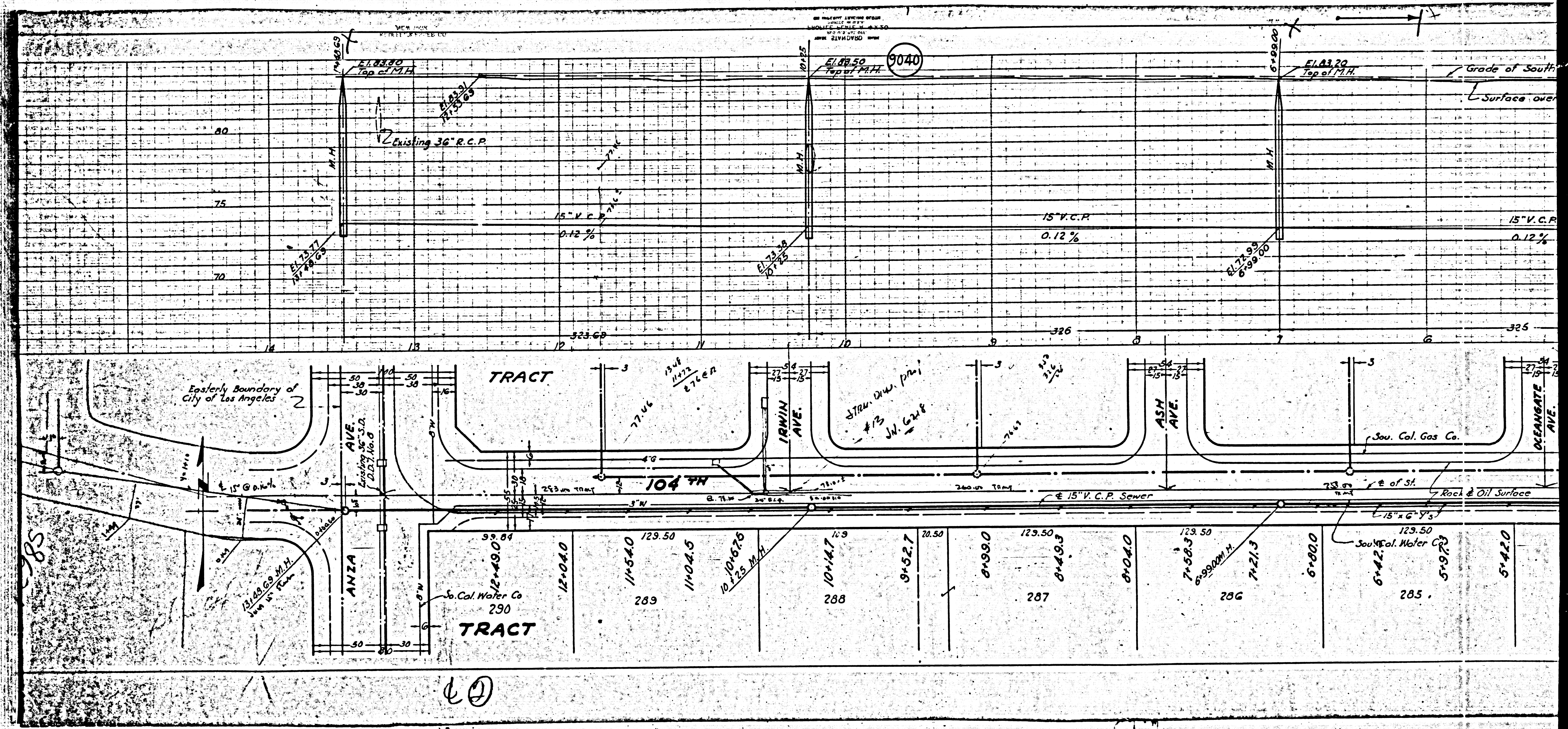
NOTE: Grades to which this improvement is to be constructed are shown on Plans and Profiles. Grade points for top of curb, center line of streets, or center line of alleys are shown by circles on Profiles. All points between designated points are established so as to conform to a straight line drawn between said designated points. Elevations are in feet above U.S.G.S. Datum or Mean Sea Level. This drawing and the data hereon are hereby made a part of the specifications. Work shall be constructed according to specifications on file in the office of the County Engineer and shall be prosecuted only in the presence of the County Engineer. Before work can be started the Contractor must obtain a permit to excavate in County Streets from the L.A. County Road Dept., 211 So. Main St. and make a deposit with the County Engineer, 700 Fashion League Building, sufficient to cover the cost of construction inspection and Record Plans.

COUNTY OF LOS ANGELES, CALIFORNIA  
 APPROVED: *[Signature]*  
 County Engineer  
 APPROVED: *[Signature]*  
 Chief Engineer of County Sanitation District No. 3  
 CHECKED: *[Signature]*  
 Office of County Engineer, Reg. C.E. No. 3103  
 FEB 24 1949



No. 286  
 M.B. 14-34-35

checked by *[Signature]* - 7-6-49



M3

M5