

1. Use Standard Manhole Frames and Covers, S-a-117
2. Use Standard Strength Pipe except as noted
3. Use Cement Mortar for all Vitrified Clay Pipe Joints
4. Resurface all trench within paved area to meet L.A. County Road Dept. requirements
5. Encase 4 feet of Sewer at all points of interference with poles as per S-a-115
6. House Connections to be constructed with inverts at property line 4.5 feet below curb grade
7. All structures shall be brick sewer structures, S-a-104

B.M. L. Q. 506, No. 22, El. 161.30
 24.5 ft. at E. end of 3' headwall of Culvert across Washington Blvd.

Note: Before breaking into any existing structure and before final acceptance of this work County Sanitation District should be notified in order that required inspection may be made.

NOTE: No representative of the County Engineer will survey or lay out any portion of the work. The owner or his authorized representative shall furnish the County Engineer with Grade Sheets and Station for all House Connections and all Appurtenances and shall pay for all necessary Sanitation District fees. Any change of location shall be requested in writing by the owner. No revisions shall be made in these Plans without approval of the County Engineer.

PROFILE ALIGNMENT AND GRADE OF
SANITARY SEWERS
 TO BE CONSTRUCTED IN
NAN STREET
CANFORD STREET
 BETWEEN PARSONS BLVD. & BEQUETTE AVE.
 IN TRACT No. 15627

PRIVATE CONTRACT No. 987
 W.S. 36
 ONE SHEET

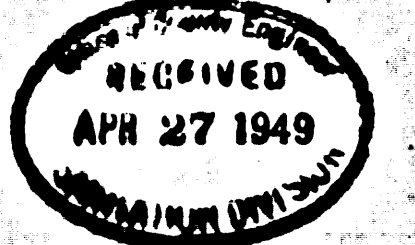
Scale: Vert. 1" = 4'
 Hor. 1" = 40' FEB. 1949

PREPARED IN THE OFFICES OF
JONES & GILBERT

By: *Paul J. Jones*
 Reg. P.E. No. 2317

FOR LEGEND
 See Plan No. S-a-64

NOTE: Grades to which this improvement is to be constructed are shown on Plans and Profiles. Grade points for top of curb, center line of streets, or center line of alley are shown by circles on Profiles. All points between designated points the grade shall be established so as to conform to a straight line drawn between said designated points. Elevations are in feet above U.S.G.S. Datum or Mean Sea Level. This drawing and the data hereon are hereby made a part of the specifications. Work shall be constructed according to specifications on file in the office of the County Engineer and shall be prosecuted only in the presence of the County Engineer. Before work can be started the Contractor must obtain a Permit to excavate or County platings from the L.A. County Road Dept., 211 So. Main St., and make a deposit with the County Engineer, Rooms 827-828-108 W. 2nd St., sufficient to cover the cost of Construction Inspection and Record Plans.



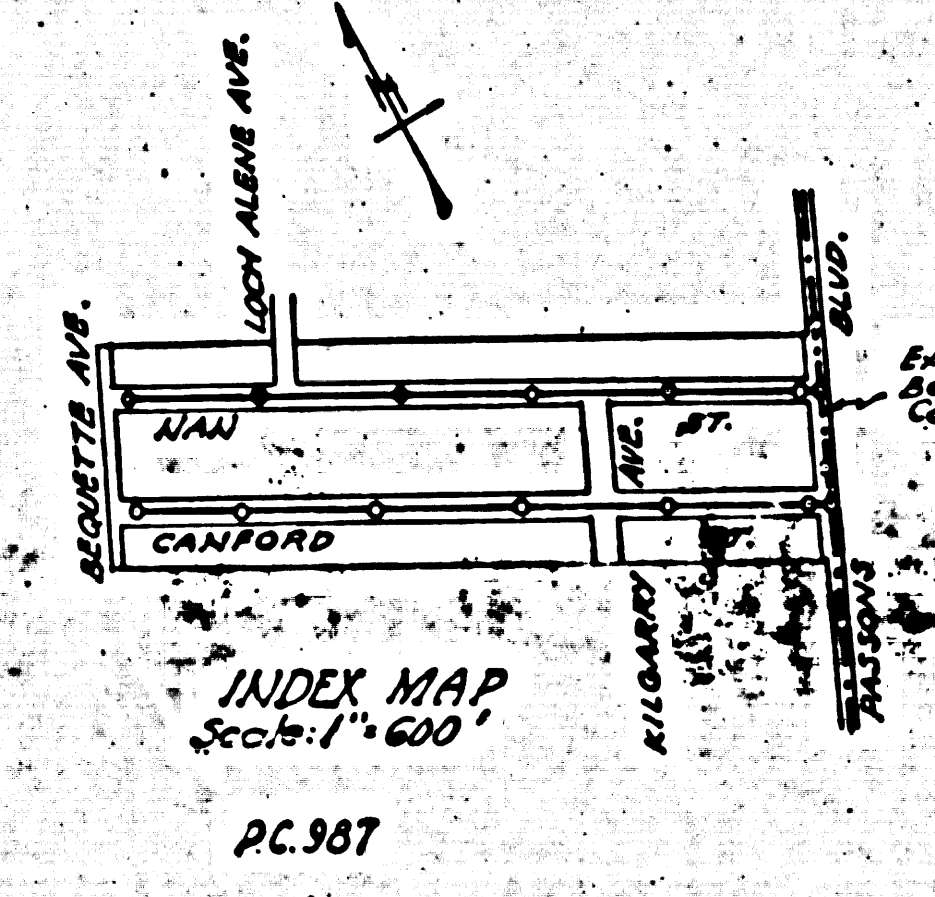
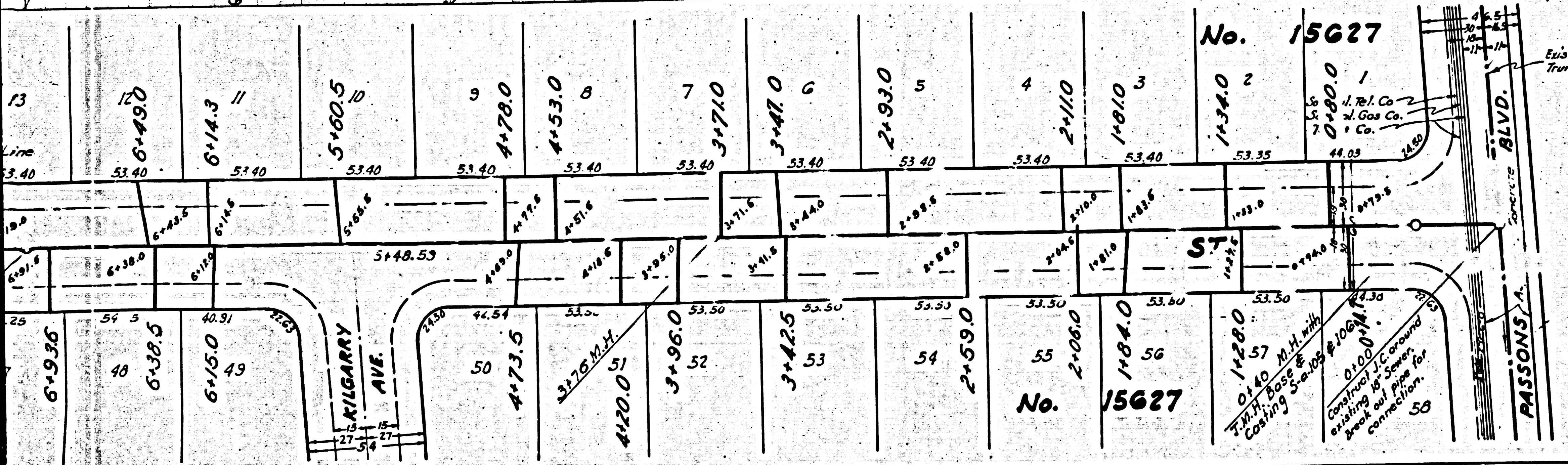
COUNTY OF LOS ANGELES, CALIFORNIA.

APPROVED *Walter C. McFarlan*
 County Engineer

APPROVED *Walter C. McFarlan*
 Chief Engineer of County Sanitation District No. 2

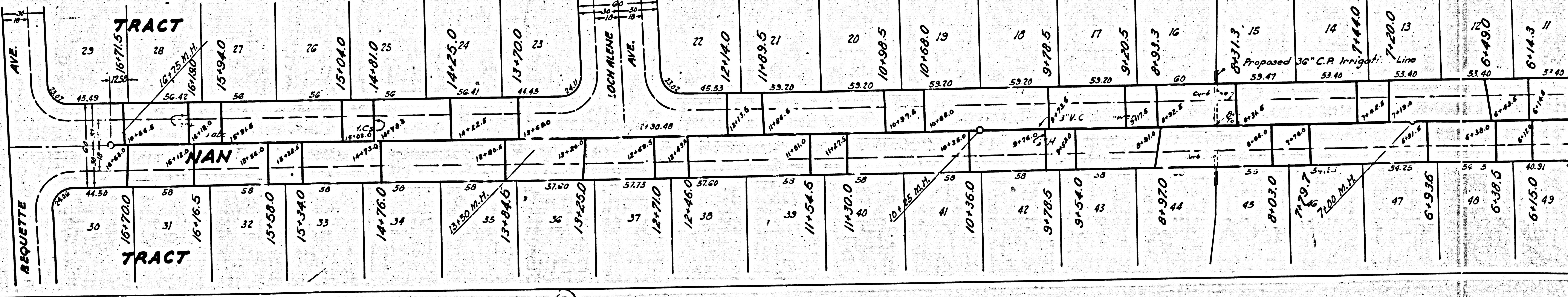
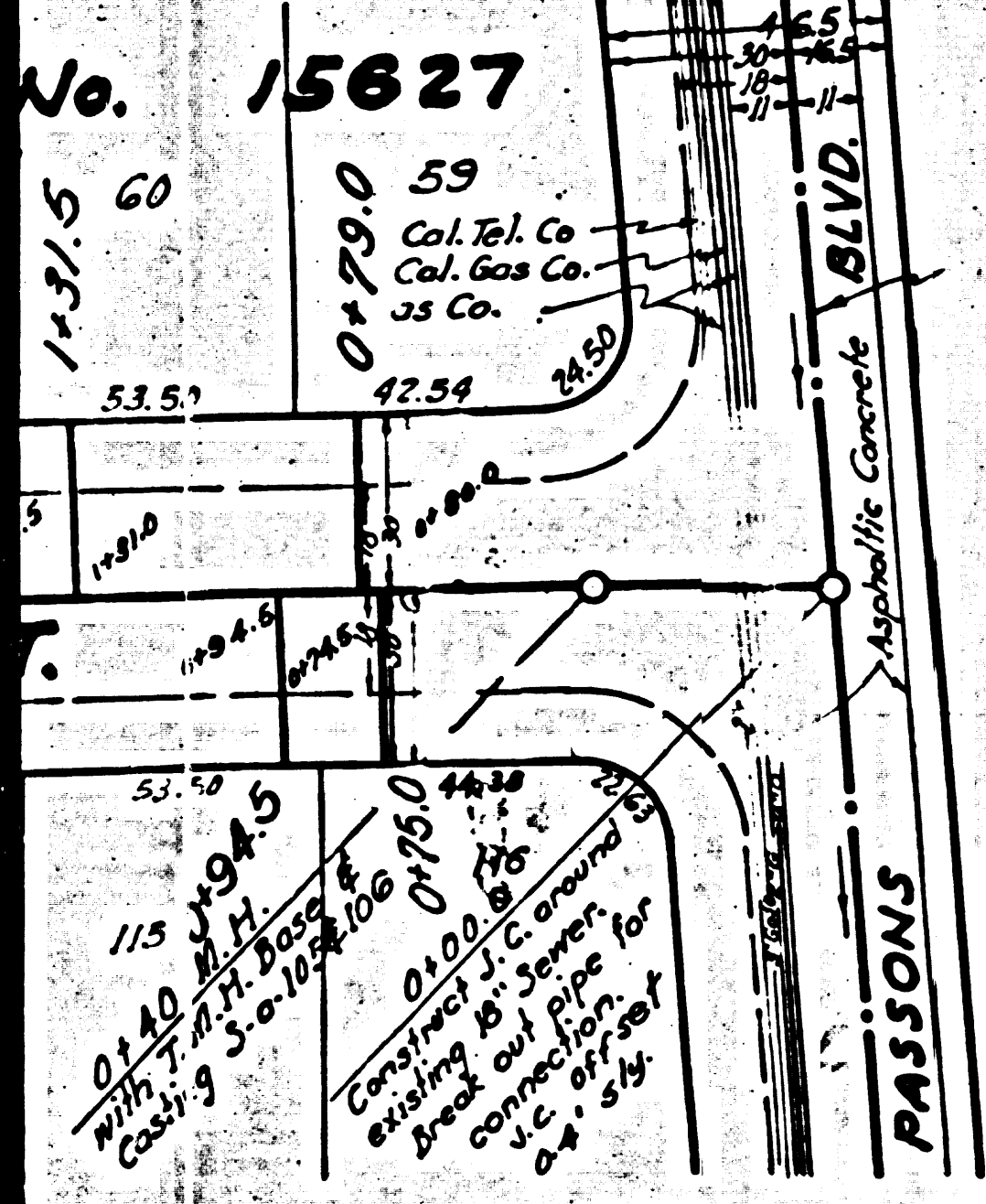
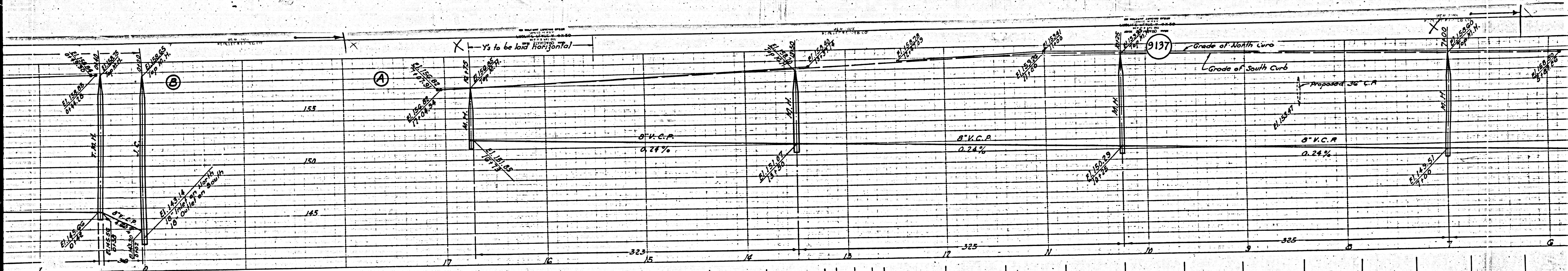
CHECKED *Walter C. McFarlan* 1949
 Office of County Engineer, Reg. C.E. No. 3205

Chief - McFarlan - 8-8-49



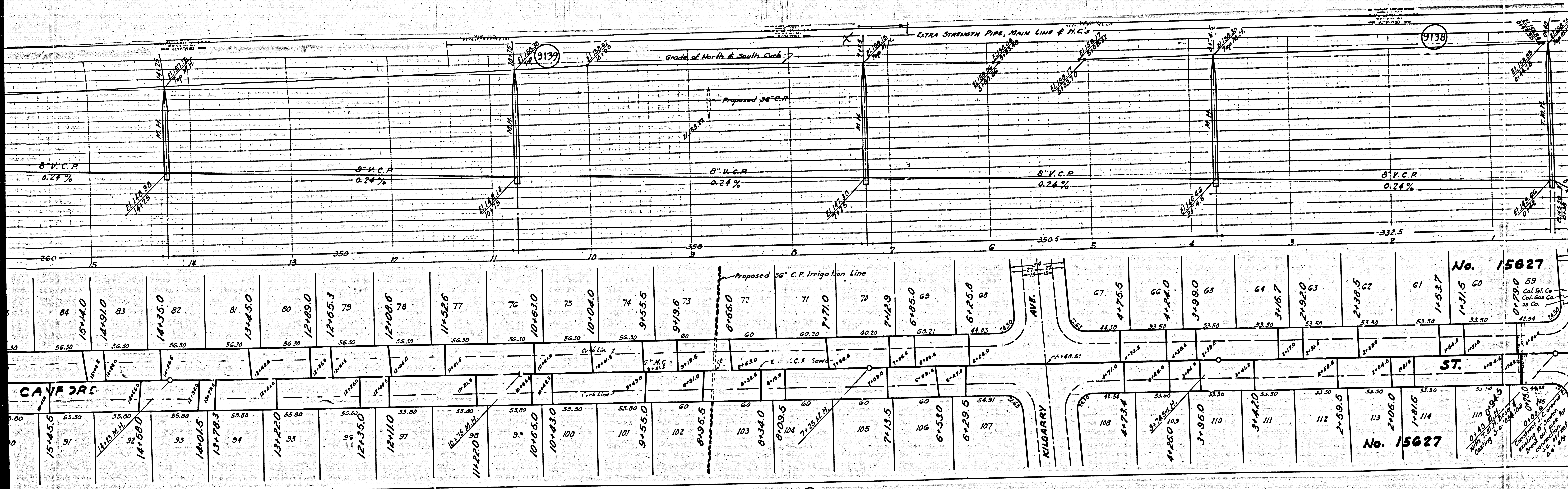
15627

EO



④

MS



84	15+14.0	83	14+01.0	82	14+35.0	81	13+45.0	80	12+89.0	79	12+65.3	78	12+08.6	77	11+52.6	76	10+63.0	75	10+04.0	74	9+55.5	73	9+19.6	72	8+66.0	71	7+17.0	70	7+12.9	69	6+85.0	68	6+25.8	67	4+75.5	66	4+24.0	65	3+99.0	64	3+16.7	63	2+92.0	62	2+28.5	61	1+53.7	60	1+21.5	59	0+79.0		
91	15+45.5	90	14+58.0	89	14+01.5	88	13+78.3	87	13+22.0	86	12+35.0	85	12+11.0	84	11+22.0	83	10+65.0	82	10+43.0	81	9+55.0	80	8+95.5	79	8+34.0	78	8+09.5	77	7+35.0	76	6+53.0	75	6+29.5	74	4+73.4	73	3+74.0	72	3+96.0	71	3+42.0	70	2+59.5	69	2+06.0	68	1+81.5	67	1+14.5	66	0+94.5	65	0+10.5

No. 15627

59
Cal. Gas Co.
55 Co.
42.54

No. 15627

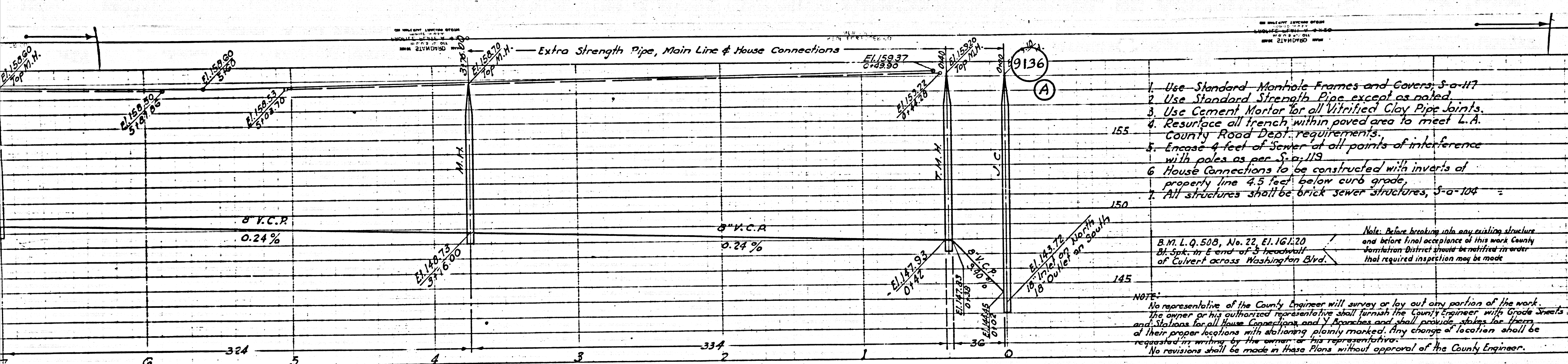
0+10.5
115
114
113
112
111
110
109
108

0+10.5
115
114
113
112
111
110
109
108

②

M3

M5

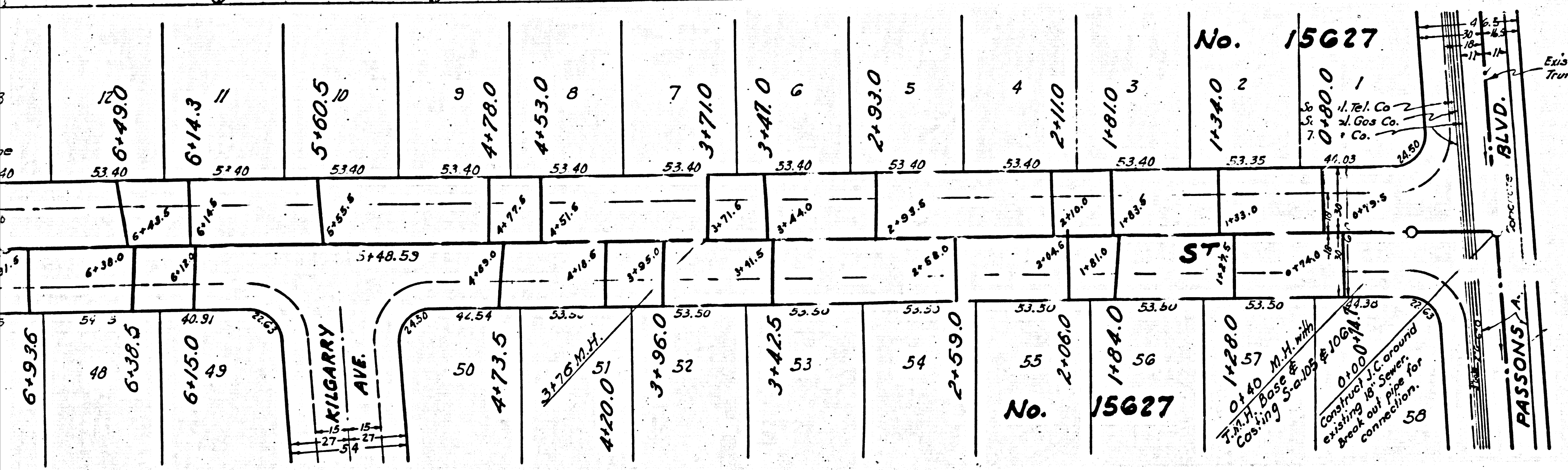


1. Use Standard Manhole Frames and Covers, S-a-117
2. Use Standard Strength Pipe except as noted.
3. Use Cement Mortar for all Vitrified Clay Pipe Joints.
4. Resurface all trench within paved area to meet L.A. County Road Dept. requirements.
5. Encase 4 feet of sewer at all points of interference with poles as per S-a-119.
6. House Connections to be constructed with inverts of property line 4.5 feet below curb grade.
7. All structures shall be brick sewer structures, S-a-104.

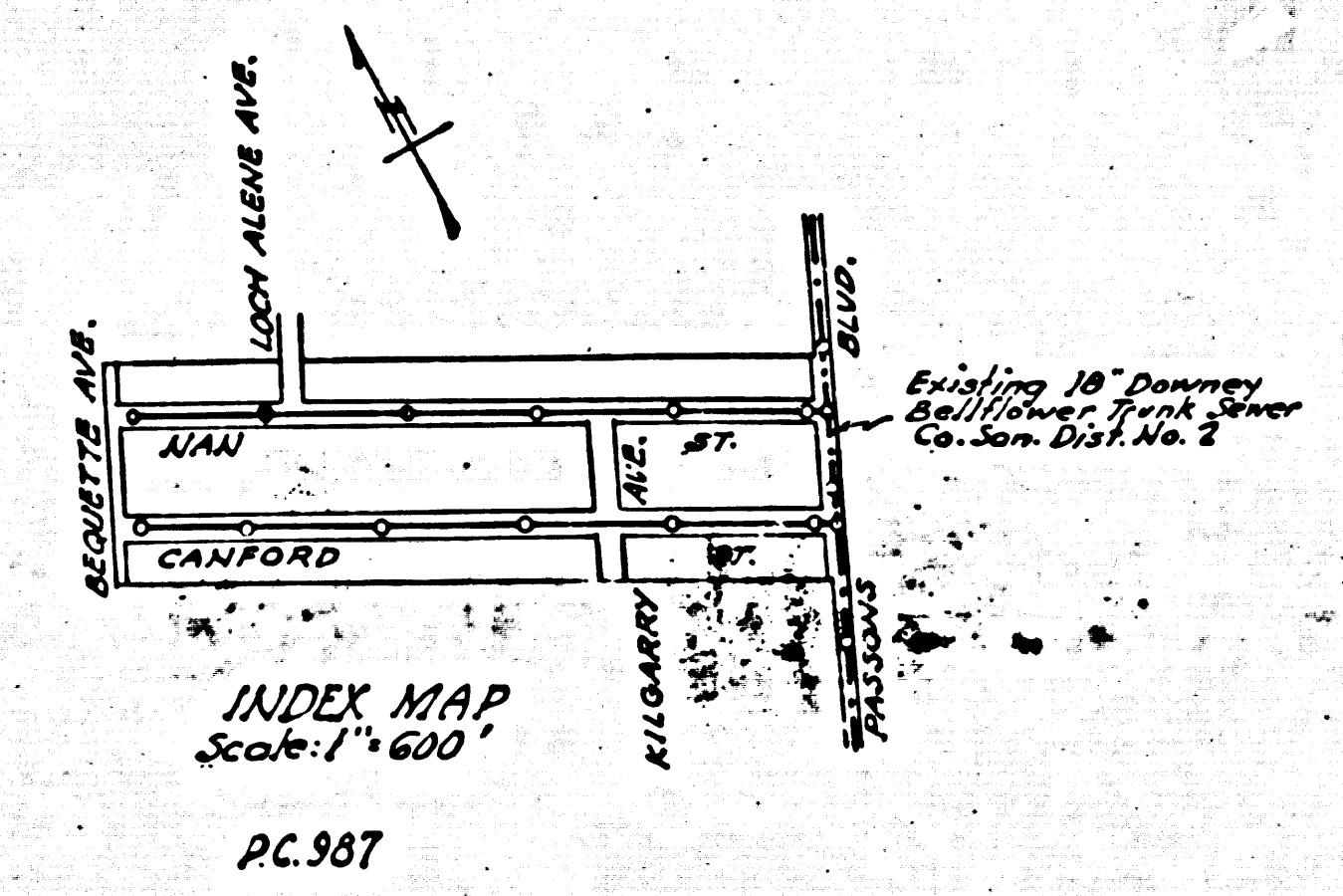
NOTE:
 No representative of the County Engineer will survey or lay out any portion of the work. The owner or his authorized representative shall furnish the County Engineer with Grade Sheets and Stations for all House Connections and Y Branches and shall provide, along with them, of their proper locations with stationing plainly marked. Any change of location shall be requested in writing by the owner or his representative. No revisions shall be made in these Plans without approval of the County Engineer.

PROFILE ALIGNMENT AND GRADE OF
SANITARY SEWERS
 TO BE CONSTRUCTED IN
NAN STREET
CANFORD STREET
 BETWEEN PARSONS BLVD. & BEQUETTE AVE.
 IN TRACT No. 15627

PRIVATE CONTRACT No. 987
W.S. 36
ONE SHEET
 Scale: Vert. 1" = 4'
 Hor. 1" = 40'
 FEB. 1949
PREPARED IN THE OFFICES OF
JONES & GILBERT



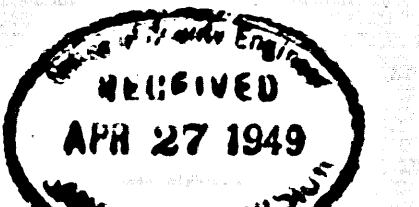
Existing 18" Downey Bellflower
 Trunk Sewer, Co. San. Dist. No. 2



NOTE:
 Grades to which this improvement is to be constructed are shown on Plans and Profiles. Grade points for top of curb, center line of streets or center line of alley are shown by circles on Profiles at all points between designated points. The grade shall be established so as to conform to a straight line drawn between said designated points. Elevations are in feet above U.S.G.S. Datum or Mean Sea Level.
 This drawing and the data hereon are hereby made a part of the specifications. Work shall be constructed according to specifications on file in the office of the County Engineer and shall be prosecuted only in the presence of the County Engineer. Before work can be started the Contractor must obtain a Permit to Excavate in County Streets from the L.A. County Road Dept. 211 So. Main St. and make a deposit with the County Engineer, Rooms 923, 928, 100 W. 2nd St., sufficient to cover the cost of Construction Inspection and Record Plans.

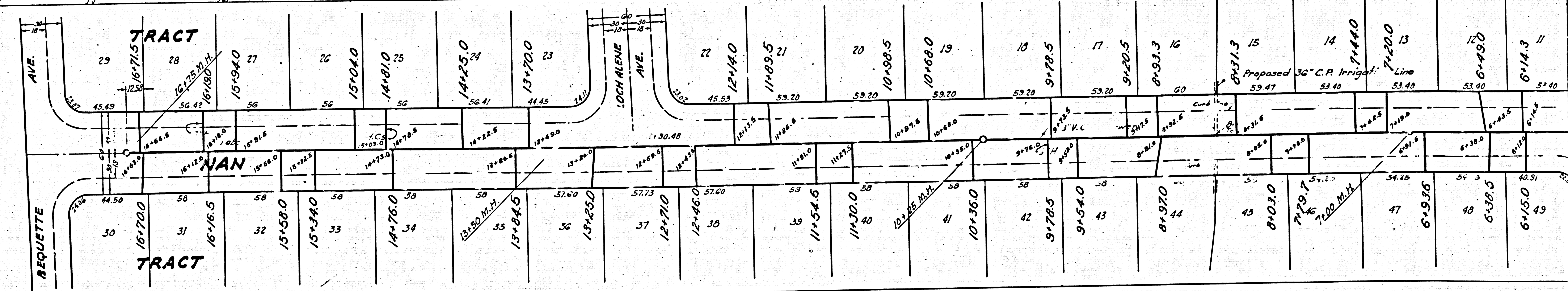
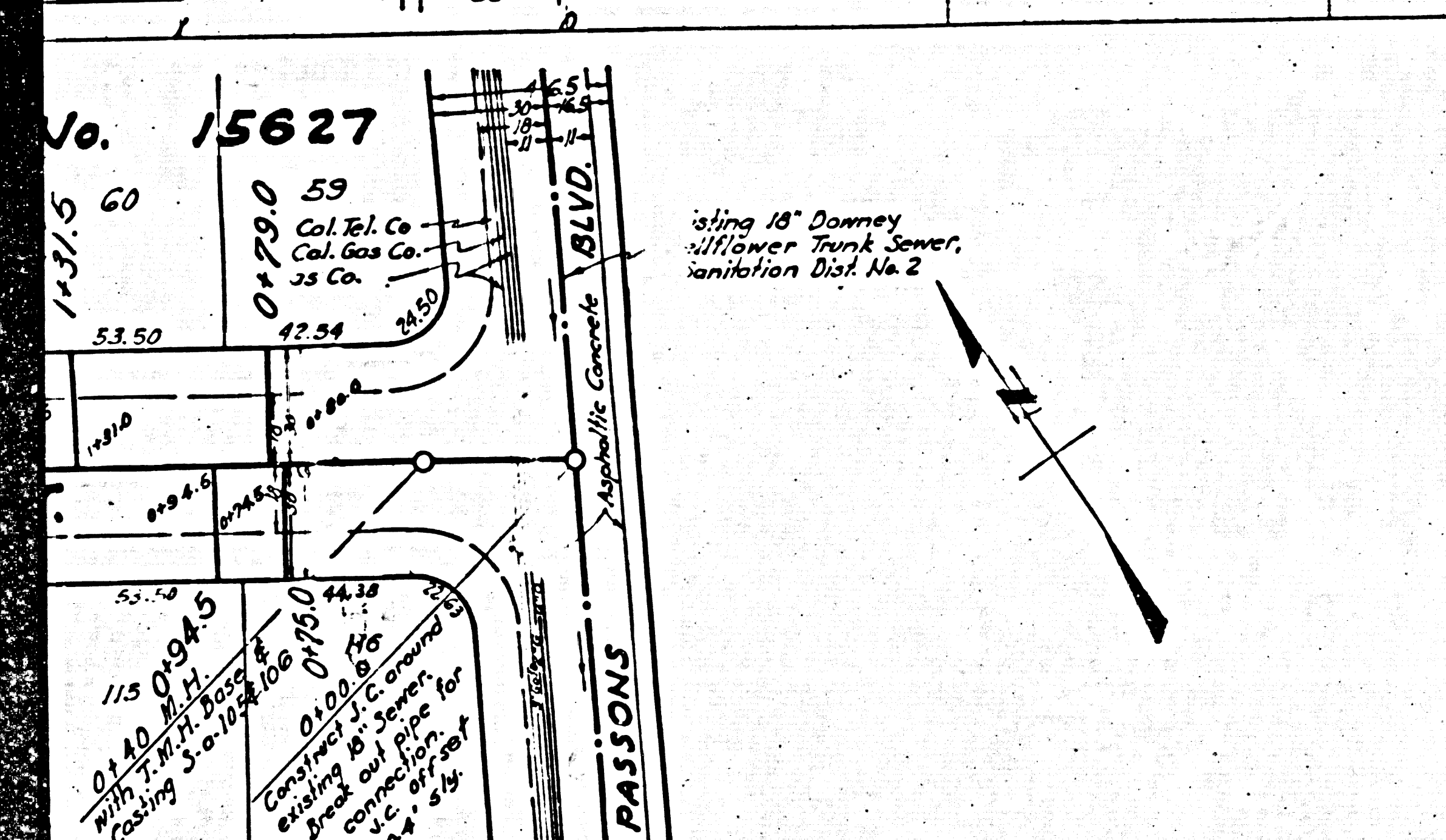
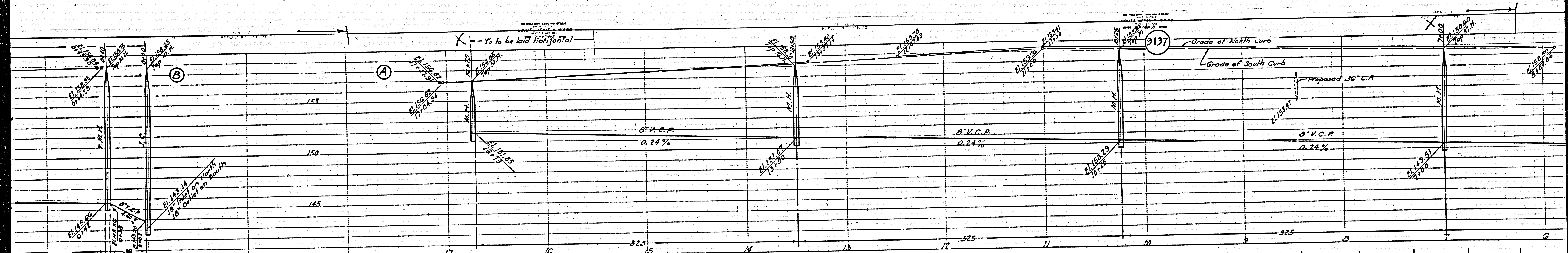
COUNTY OF LOS ANGELES, CALIFORNIA.

APPROVED *[Signature]*
 County Engineer
 APPROVED *[Signature]*
 Chief Engineer of County
 Sanitation District No. 2
 CHECKED *[Signature]* 1949
 Office of County Engineer Reg. C.E. No. 3205



78P.39

EO

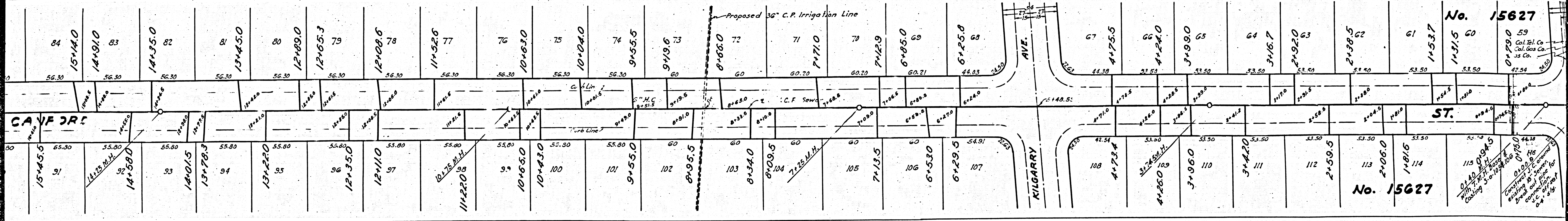
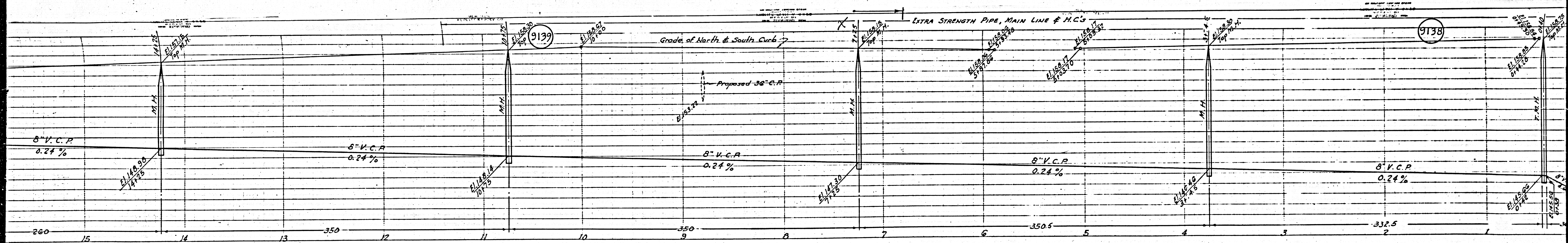


②

1/31.5

M3

M3



(2)

No. 15627

No. 15627

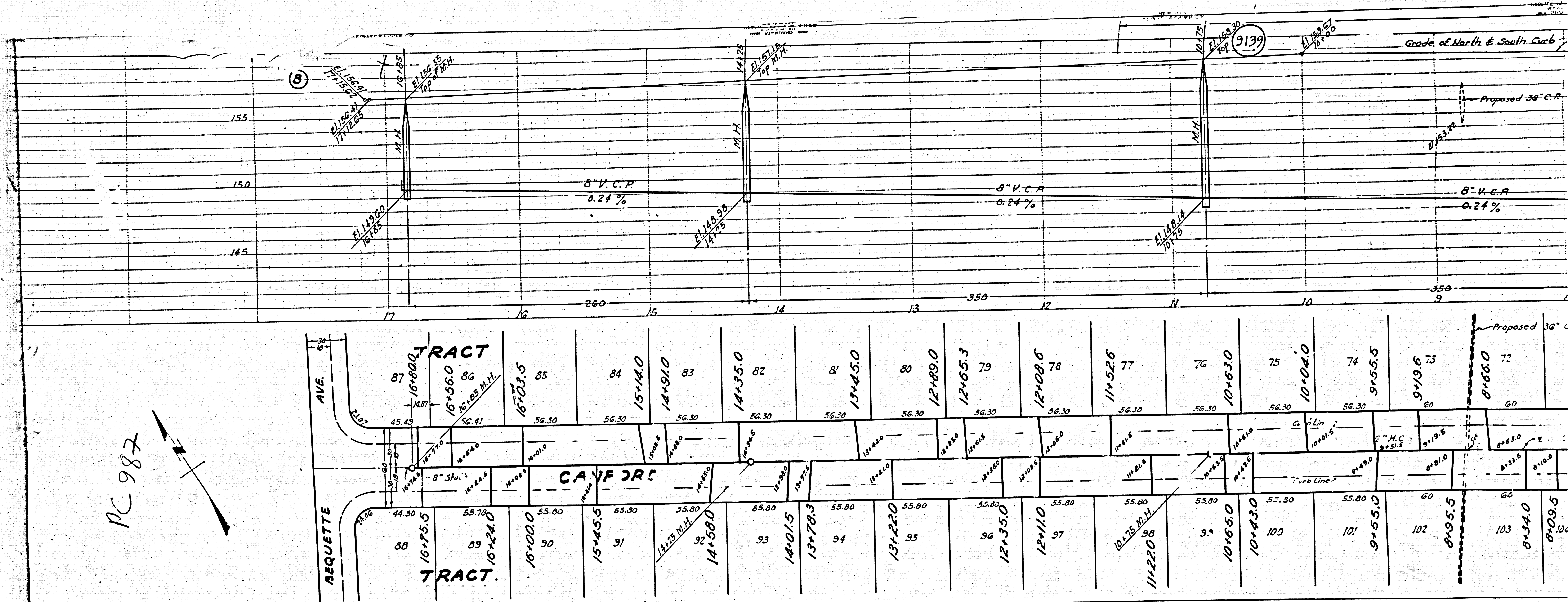
84
15444.0
83
14491.0
82
14435.0
81
13445.0
80
12489.0
79
12465.3
78
12408.6
77
11452.6
76
10463.0
75
10404.0
74
9455.5
73
9496.7
72
8468.0
71
7471.0
70
7412.9
69
6405.0
68
6425.8
67
4475.5
66
4424.0
65
3499.0
64
3416.7
63
2492.0
62
2438.5
61
1453.7
60
1431.5
59
9470.0

80
15445.5
79
14492.0
78
14438.0
77
13448.0
76
12492.0
75
12468.0
74
12410.0
73
11465.0
72
11220.0
71
10470.0
70
10430.0
69
9455.0
68
9495.5
67
8434.0
66
8409.5
65
7475.5
64
7413.5
63
6453.0
62
6429.5
61
5491.0
60
4473.4
59
4426.0
58
3496.0
57
3420.0
56
2459.5
55
2406.0
54
1481.5
53
11509.5
52
11509.5
51
11509.5
50
11509.5

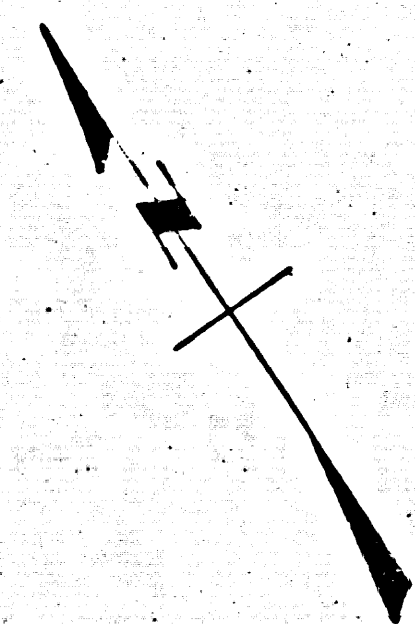
RILGARRY AVE. ST.

Proposed 36" C.P. Irrigation Line
 C.P. Sewer
 M.H.
 M.H.C.
 Grade of North & South Curb
 8" V.C.P. 0.24%

Construction of C.P. Sewer
 and M.H. to be completed for
 the construction of the
 main line pipe for
 50' of length
 at a cost of \$4.50 per
 foot



PC 987



④

PL

M

M