

PROFILE ALIGNMENT AND GRADE OF SANITARY SEWERS TO BE CONSTRUCTED IN GRAYDON AVENUE	
BETWEEN STANDISH ST. AND ARMIJO ST.	ATARA STREET
BETWEEN GRAYDON ST. AND POINT 204 FT. WEST OF E. OF HUNTER AVENUE	EL SUR STREET & AVORA STREET
BETWEEN GRAYDON AVENUE AND GRAYDON AVENUE	STANDISH STREET
BETWEEN GRAYDON AVENUE AND MAYFLOWER AVENUE	FAIRGREEN AVENUE
BETWEEN EL SUR STREET AND ARMIJO ST.	ARMJO STREET
BETWEEN GRAYDON AVENUE AND WEST LIME TR. 18975	

SCALE: VERT. 1" = 4'  
HORIZ. 1" = 40'

DATE: JUNE 1948

1. Use Standard Manhole Frames and Covers, S-a 117  
 2. Use Standard Strength Pipe  
 3. Use Cement mortar for all vitrified clay pipe joints  
 4. All structures shall be brick sewer structures, S-a 104  
 5. Resurface all trench within paved area to meet L.A. County Road Department requirements  
 6. Construct House Connections with invert at Property Line 5 feet below curb grade, except as noted.

B.M. Elev. 366.75  
 I.T. & Peck Road  
 and Jeffries Avenue

NOTE: No representative of the County Engineer will survey or lay out any portion of the work. The owner or his authorized representative shall furnish the County Engineer with grade sheets and stations for all house connections and branches and shall provide stakes for them at their proper locations with stationing plainly marked. Any change in locations shall be requested in writing by the owner or his representative. No revisions shall be made in these plans without approval of the County Engineer.

PRIVATE CONTRACT NO. 991  
 W.S. 46

SHEET 1 OF 1 SHEETS  
 PREPARED IN THE OFFICE OF  
 KARL E. TUTTLE

By *Karl E. Tuttle* RE 2000  
 COUNTY ENGINEER

FOR LEGEND  
 SEE PLAN NO. S-464

NOTE:  
 Grades to which this improvement is to be constructed are shown on Plans and Profile. Grade points for top of curb, center line of street or center line of alley are shown by circles on Profiles. At all points between designated points the grade shall be established so as to conform to a straight line drawn between said designated points.  
 Elevations are in feet above U.S.G.S. datum or mean sea level.  
 This drawing and the data hereon are hereby made a part of the specifications. Work shall be constructed according to specifications on file in the office of the County Engineer and shall be prosecuted only in the presence of the County Engineer.  
 Before work can be started the Contractor must obtain a permit to excavate in County Streets from the L.A. County Road Dept., 211 So. Main St., and make a deposit with the County Engineer, 118 County Engineering Bldg., sufficient to cover the cost of construction inspection and record plans. If work is to be done in a State Highway, a permit must be obtained from the State of California Division of Highways, 605 State Bldg. after making the deposit with the County Engineer.

COUNTY OF LOS ANGELES, CALIFORNIA

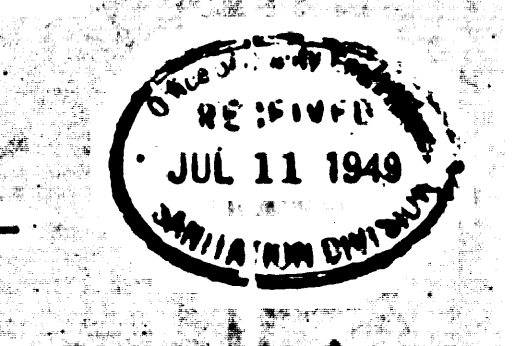
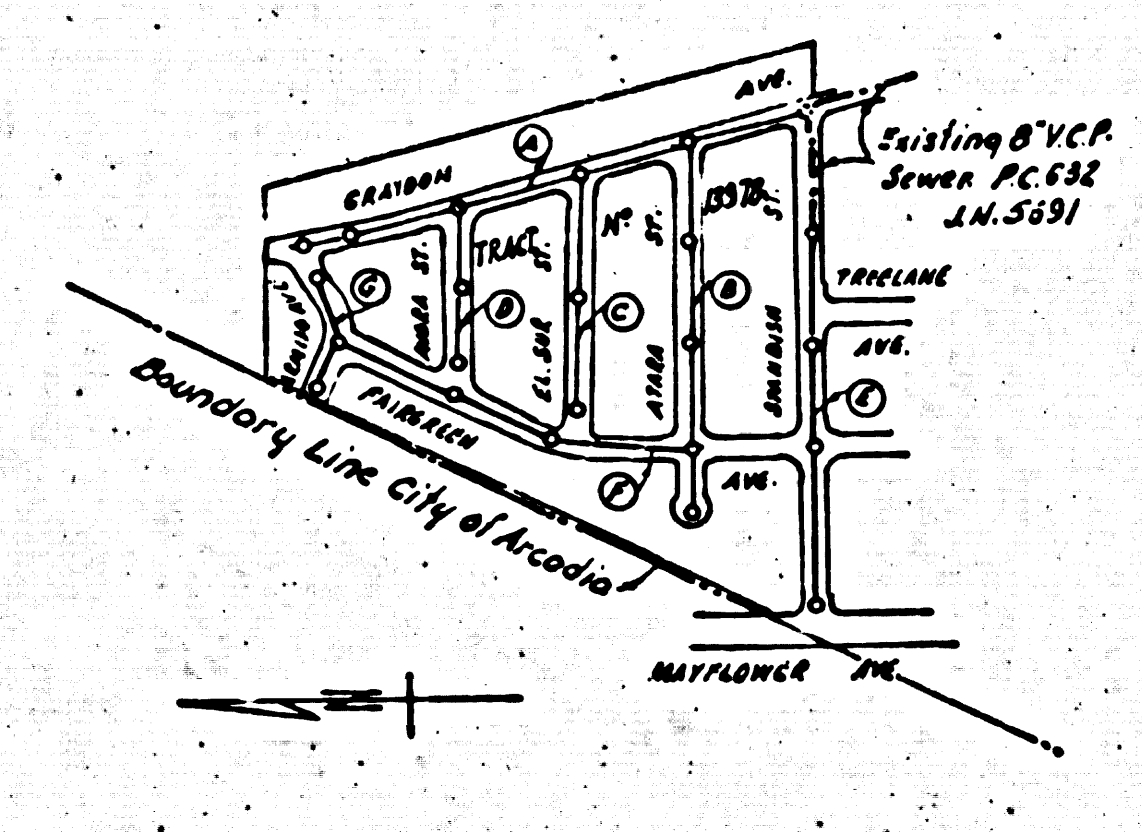
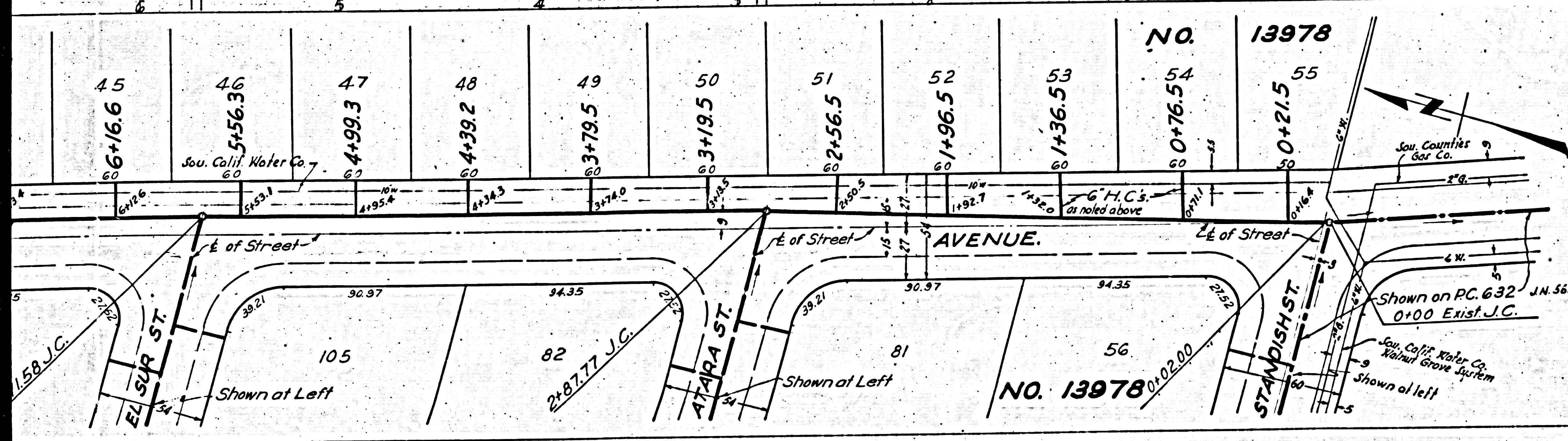
APPROVED *E. Edmund*  
 COUNTY ENGINEER

APPROVED *C. K. Condit*  
 ACTING CHIEF ENGINEER OF COUNTY  
 SANITATION DISTRICT NO. 15

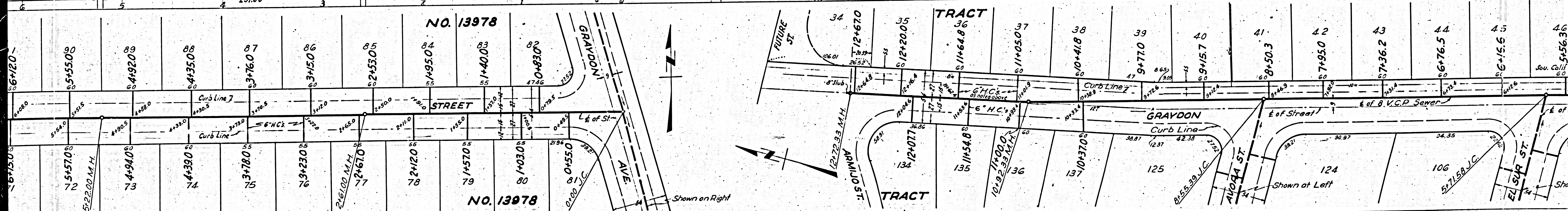
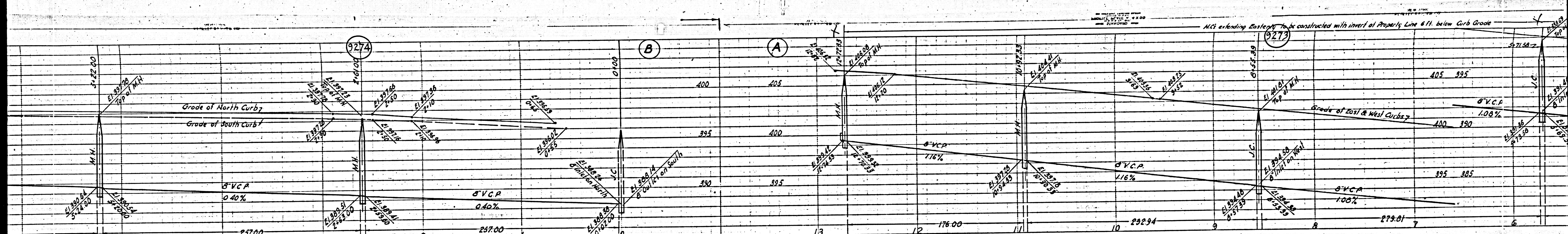
CHECKED BY *James T. Rostie* 6/17/48  
 Office of County Engineer, RE 7103

INDEX MAP  
 P.C. # 991 J.N. 3069  
 Scale: 1" = 600'

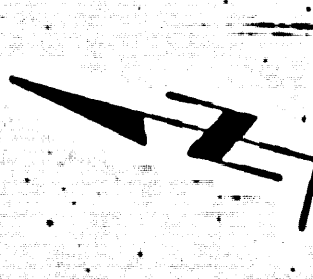
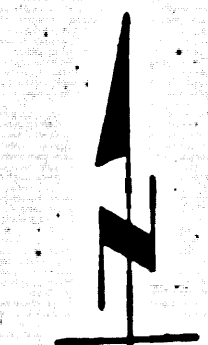
*Leola McLaren - 10-13-49*



20

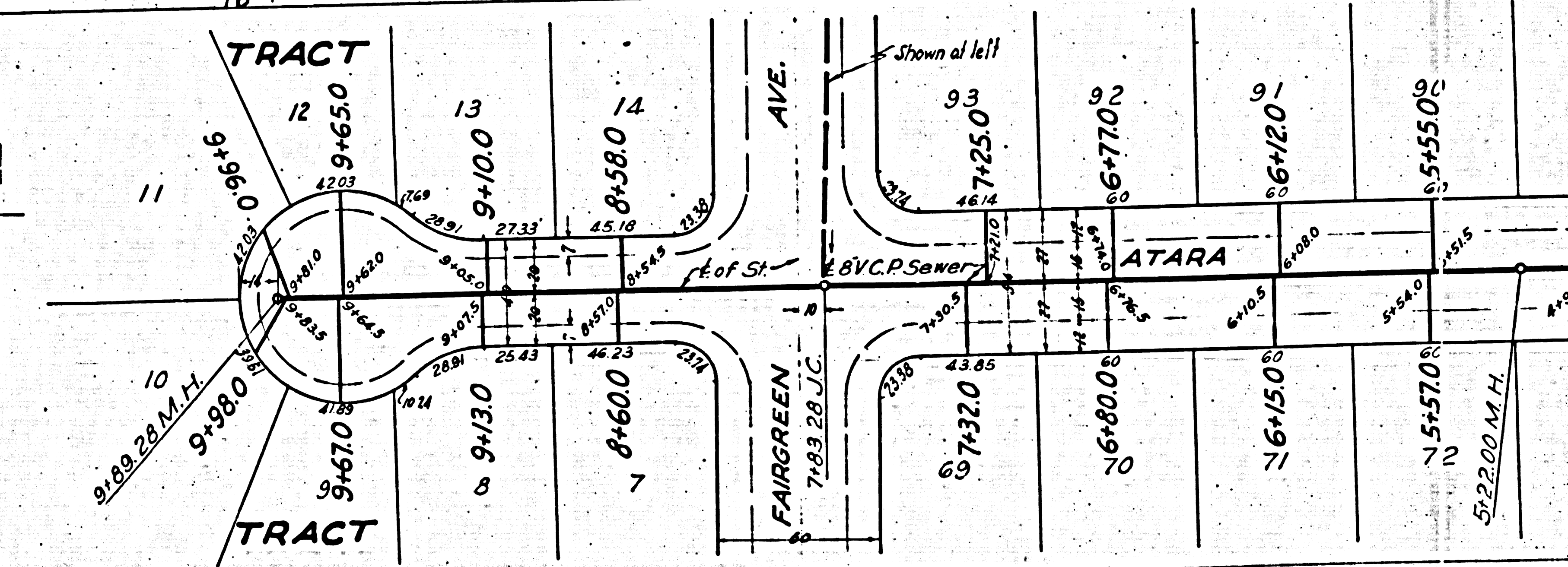
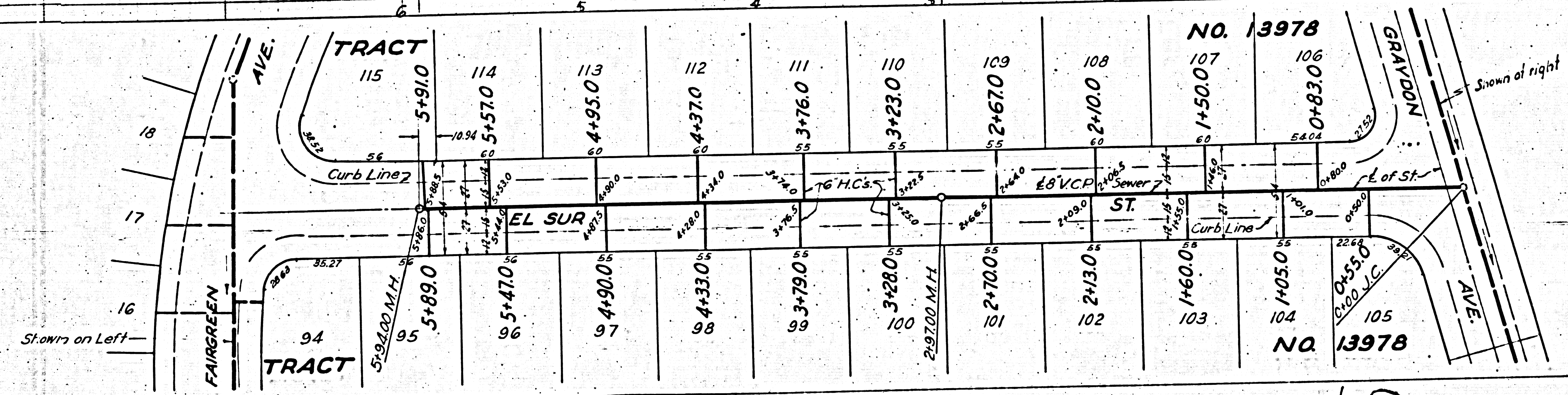
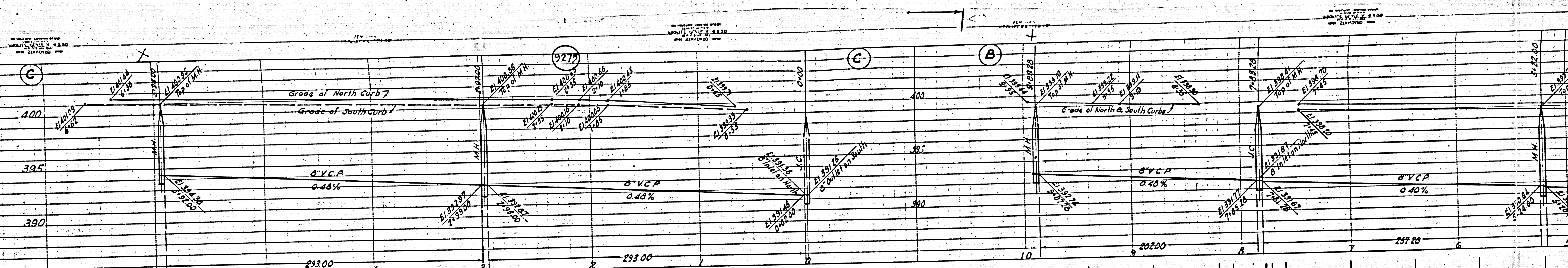


N.C. extending Eastward to be constructed with invert of Property Line 6 ft. below Curb Grade

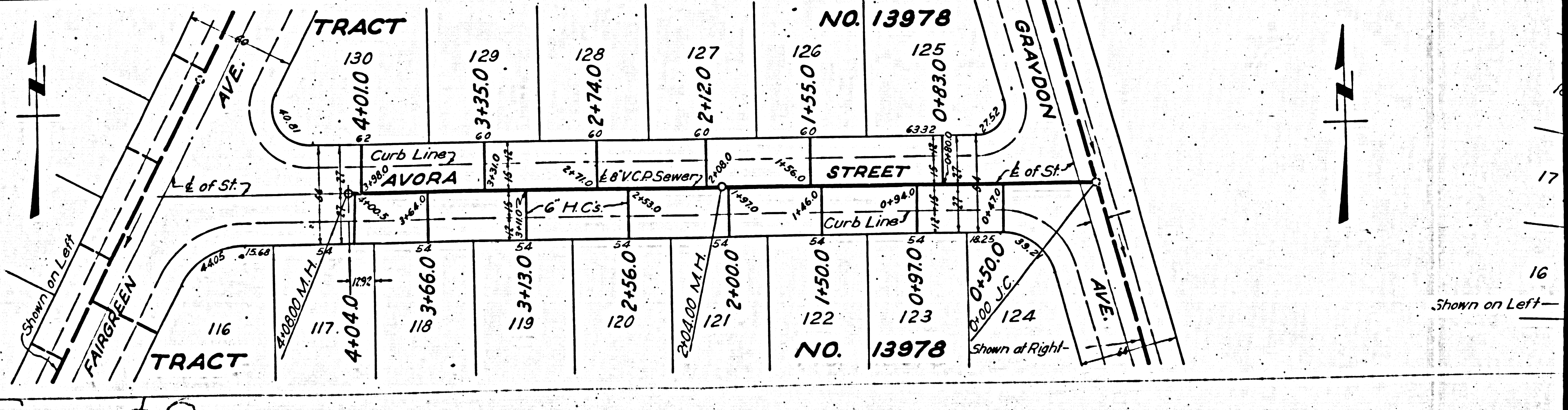
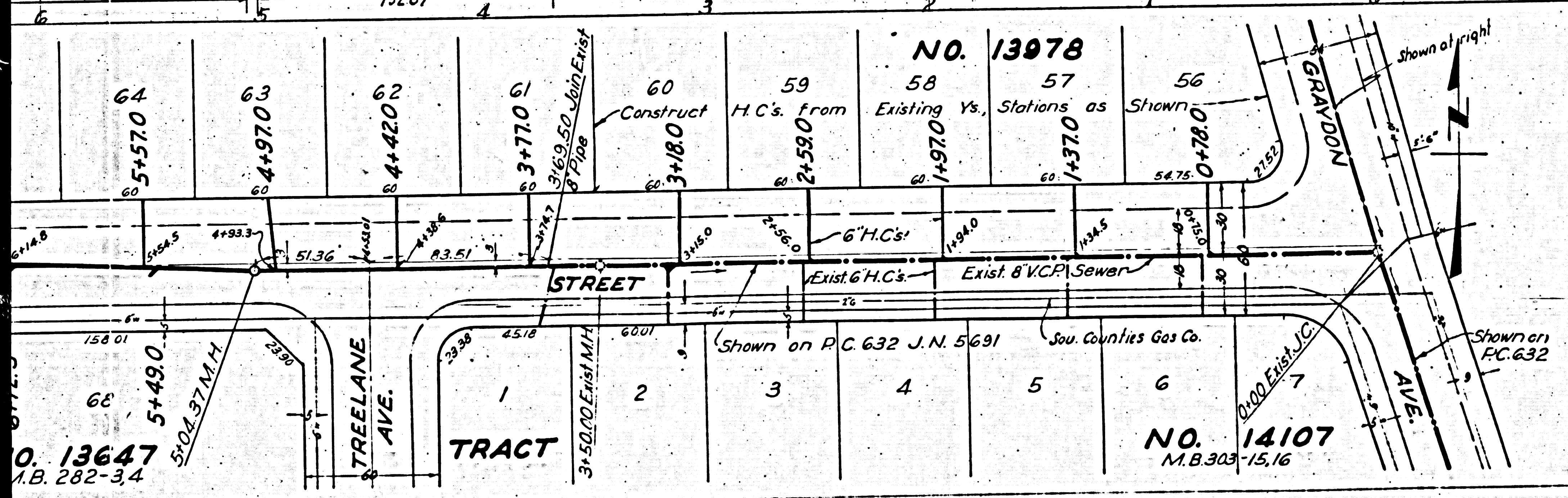
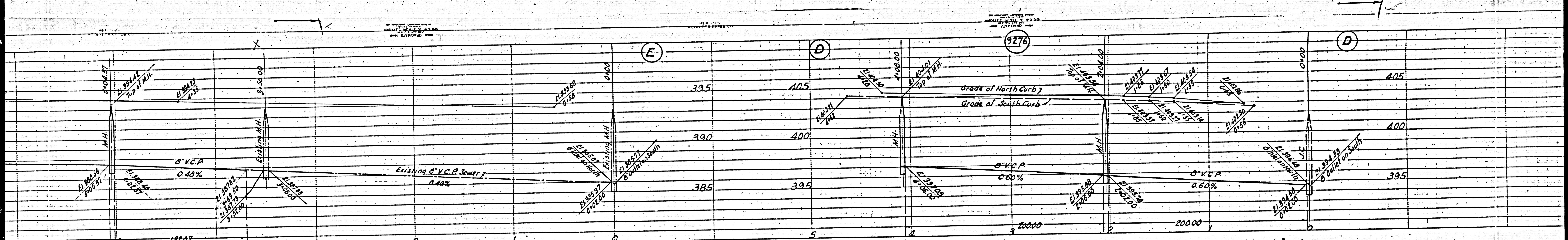


20

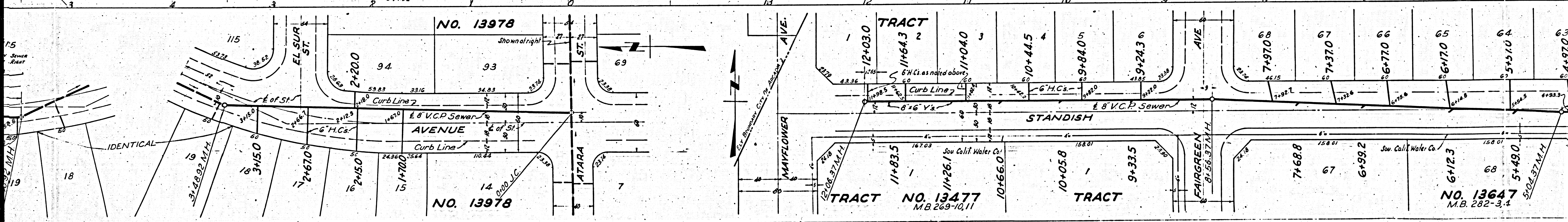
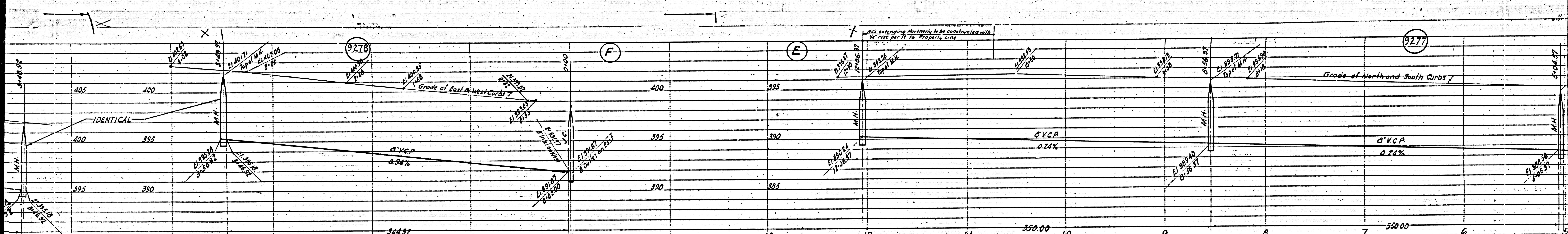
M5



③



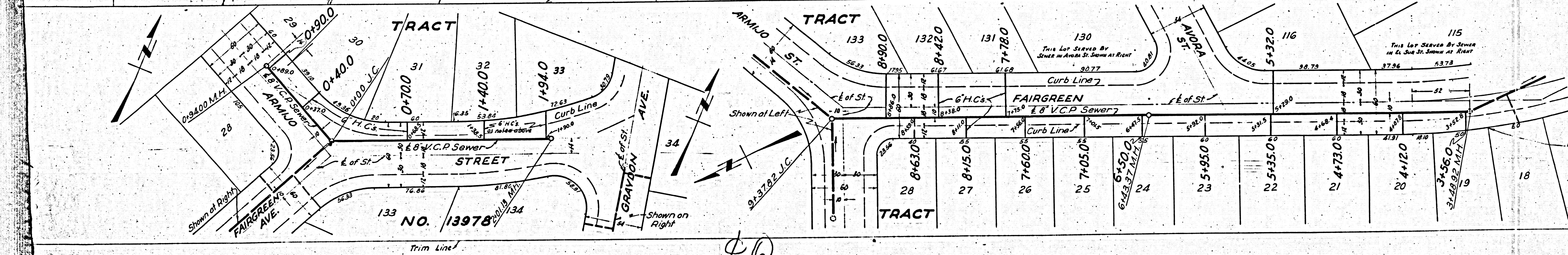
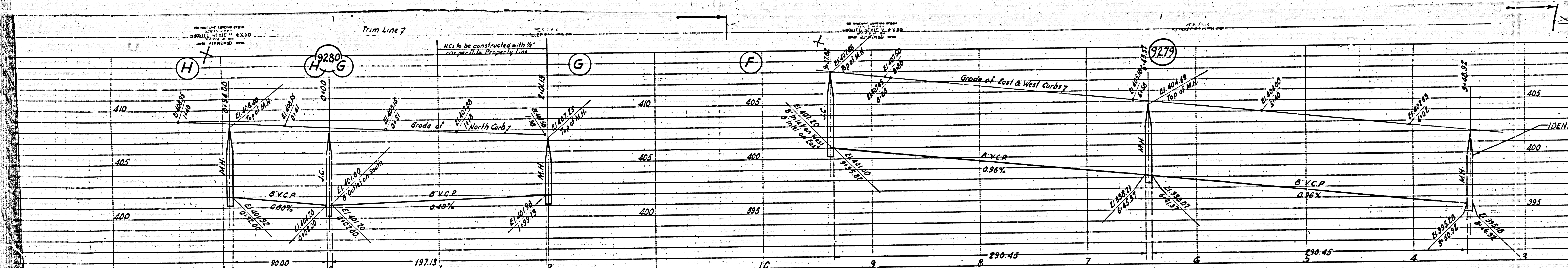
24



(S)

M3

M5



②⑥