

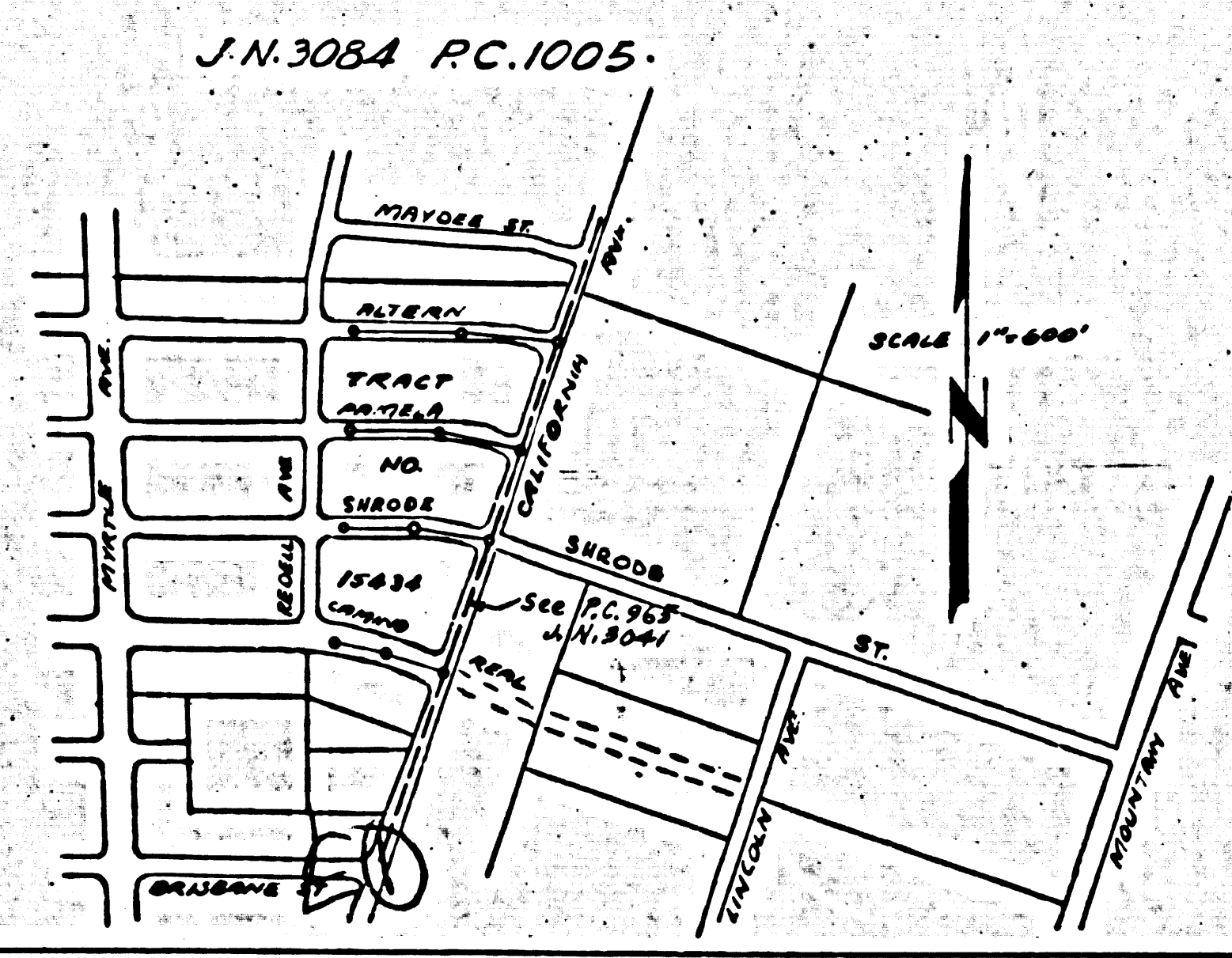
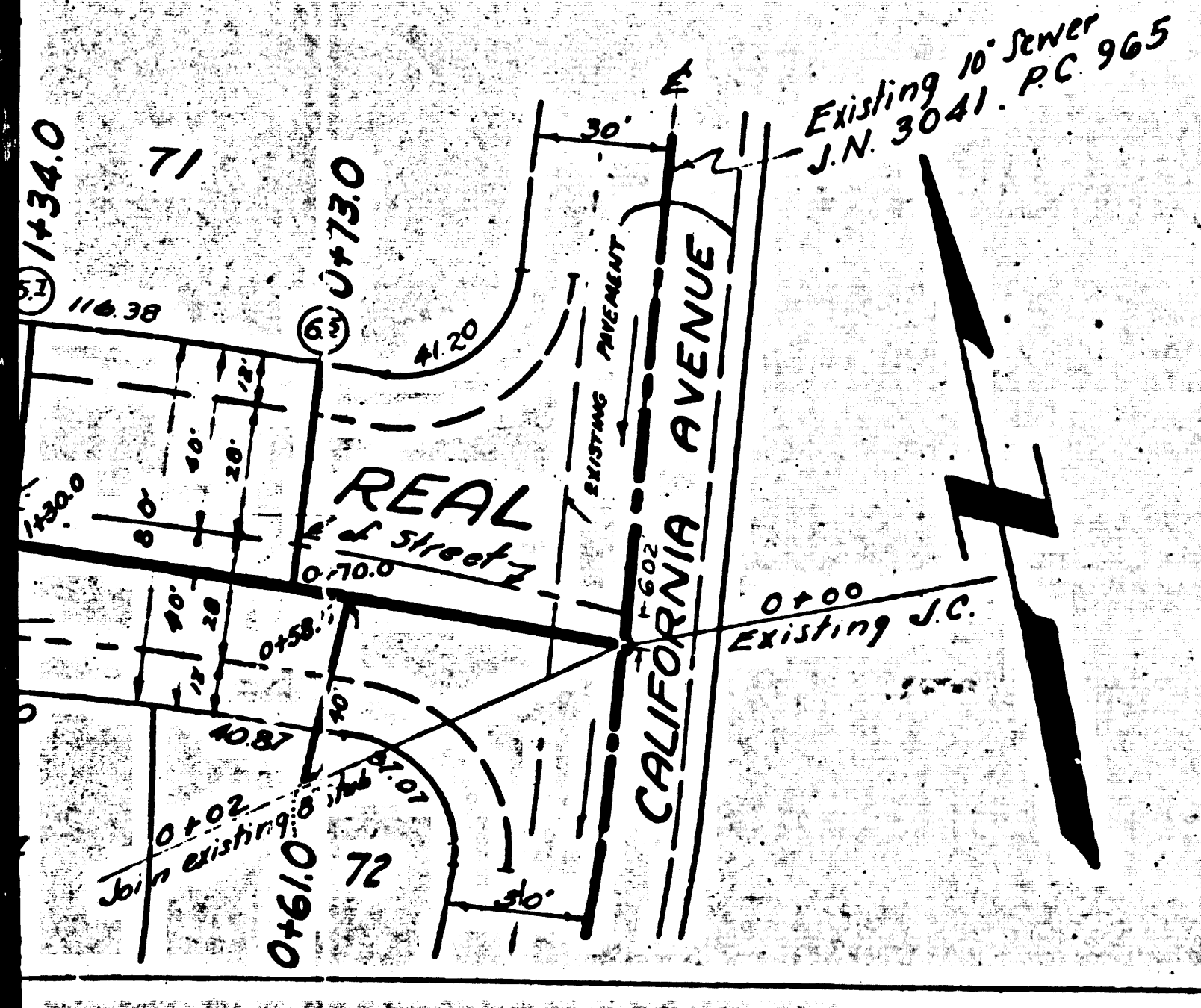
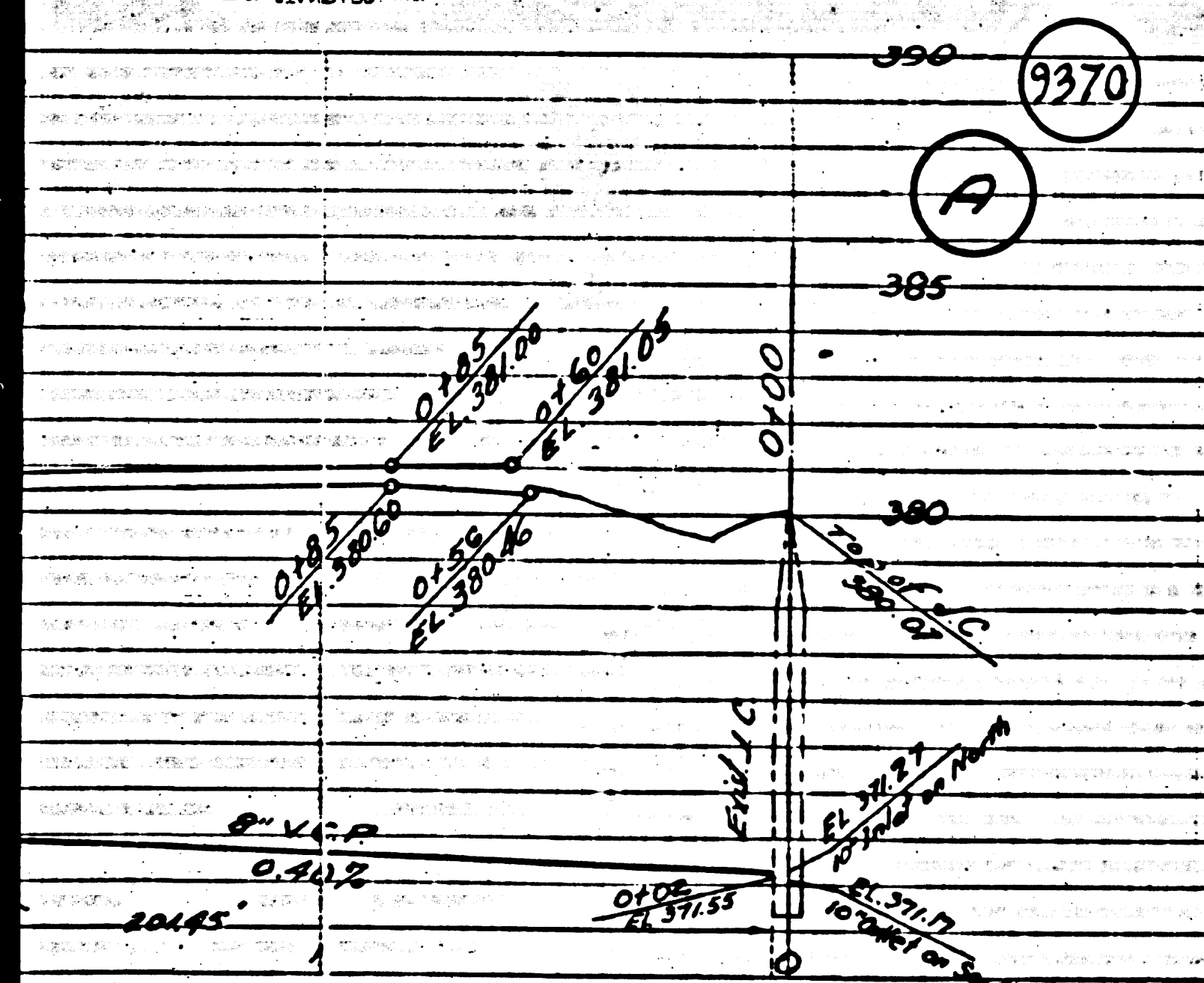
B.M. 24. ELEV. 392.13 L.C.T. N.W. CORNER
OF CALIFORNIA AVE. STA. 20170 2M. OF
END OF CURB NEAR MAYDEE ST.
L.A. CO. ROAD DEPT. P.B. 7-390-44

- (A) USE STANDARD MANHOLE FRAMES AND COVERS S-2-117
- (B) USE STANDARD STRENGTH PIPE
- (C) USE CEMENT MORTAR FOR ALL VITRIFIED CLAY PIPE JOINTS
- (D) CONSTRUCT HOUSE CONNECTIONS WITH INVERT AT PROPERTY LINE (S) FEET BELOW CURB GRADE, EXCEPT AS NOTED
- (E) ALL STRUCTURES SHALL BE BRICK SEWER STRUCTURES S-2-104
- (F) RESURFACE ALL TRENCH WITHIN PAVED AREA TO MEET ROAD DEPARTMENT REQUIREMENTS

NOTE
No Representative of the County Engineer will survey or layout any portion of the work.
The owner or his authorized representative should furnish the County Engineer with Grade sheets and stations at all Y branches and shall provide stakes for them at their proper locations with staking plainly marked. Any change of location shall be requested in writing by the owner of the representative. No revision shall be made in these plans without approval of the County Engineer.

9369
PROFILE ALIGNMENT AND GRADE OF
SANITARY SEWERS
TO BE CONSTRUCTED IN
ALTERN STREET
PAMELA STREET
SHRODE STREET
CAMINO REAL
BETWEEN REDELL STREET AND CALIFORNIA AVENUE

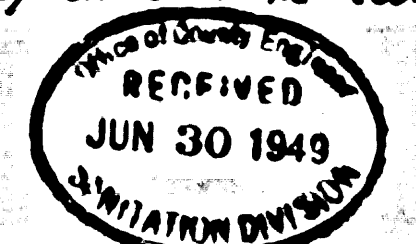
PRIVATE CONTRACT NO. 1005
W.S. 46
SHEET 1 OF 1 SHEETS
SCALES: HORIZ. 1"=40'
VERT. 1"=4'
NOVEMBER 1948
PREPARED IN THE OFFICES OF
HAROLD A. BARNETT
by **Harold A. Barnett**
REG. C.E. NO. 1816



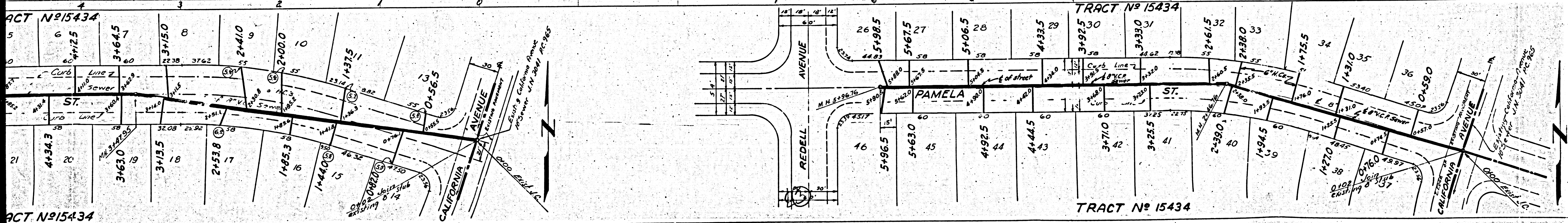
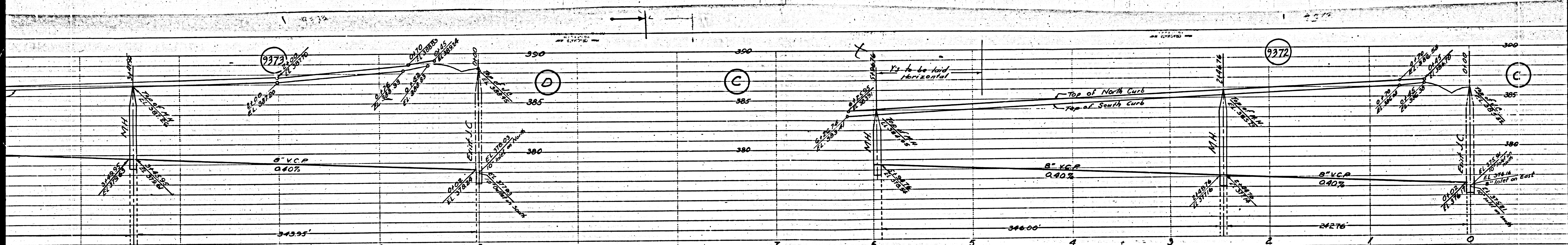
NOTE
Grades to which this improvement is to be constructed are shown on Plans and Profile. Grade points for top of curb, or center line of street are shown by circles on Profiles. At all points between designated points the grade shall be established so as to conform to a straight line drawn between said designated points.
Elevations are in feet above U.S.G.S. datum or mean sea level.
This drawing and the data hereon are hereby made a part of the specifications.
Work shall be constructed according to specifications on file in the office of the County Engineer and shall be prosecuted only in the presence of the County Engineer.
Before work can be started, the Contractor must obtain a permit to excavate in County streets from the L.A. County Road Department, 24 South Main Street, and record plans.
If work is to be done in a State Highway a permit must be obtained from the State of California, Division of Highways, 808 State Building after making the deposit with the County Engineer.
COUNTY OF LOS ANGELES, CALIFORNIA.

APPROVED *[Signature]*
COUNTY ENGINEER
APPROVED *[Signature]*
CHIEF ENGINEER OF COUNTY
SANITATION DISTRICT NO. 15

CHECKED BY *[Signature]*
OFFICE OF COUNTY ENGINEER
REG. C.E. NO. 3105

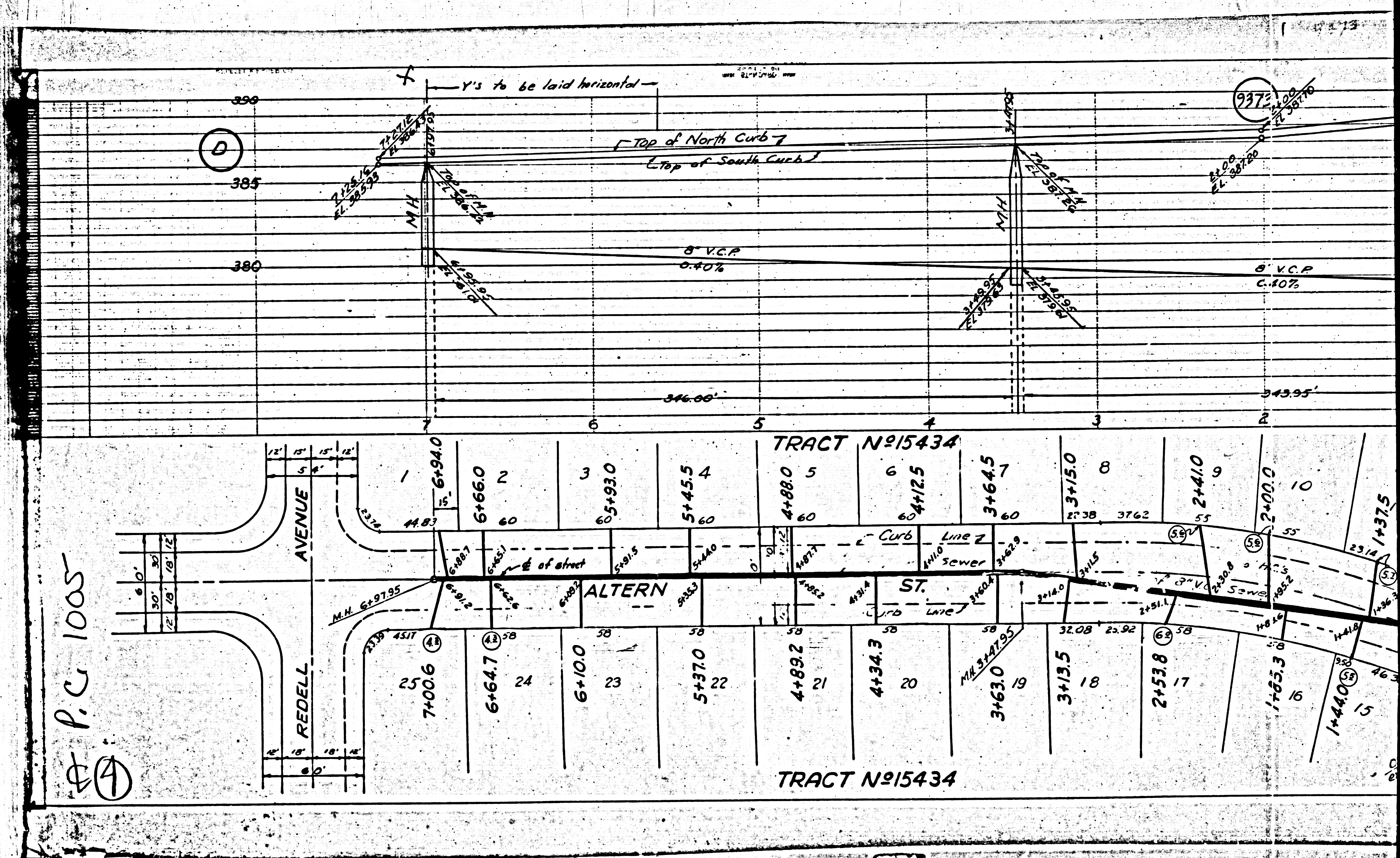


check - H. Larson - 11-3-49



M8

M8



P.C. 1005

TRACT N°15434

M3

M3