

1. Use Standard Manhole Frames and Covers, S-a-117
2. Use Standard Strength Pipe
3. Use Cement Mortar for all Vitrified Clay Pipe Joints
4. Resurface all trench within Road Area to meet L.A. County Road Dept. requirements
5. Excavate four feet of Sewer at points of interference with Poles as per S-a-119
6. House Connections to be constructed with invert at properly line 4.5 feet below Curb Grade.
7. All structures to be Brick Sewer structures, S-a-104

NOTE:
 No representative of the County Engineer will survey or lay out any portion of the work. The owner or his authorized representative shall furnish the County Engineer with Bench Sheets and Stationing for all House Connections and V Branches and shall provide stakes for them at their proper locations with stationing plainly marked. Any change of location shall be requested in writing by the owner or his representative.
 No revisions shall be made in these Plans without approval of the County Engineer.

PROFILE, ALIGNMENT AND GRADE OF
SANITARY SEWERS
 TO BE CONSTRUCTED IN
SANITARY SEWER RIGHT OF WAY
 IN TRACT No. 15048
 IN TRACT No. 15355

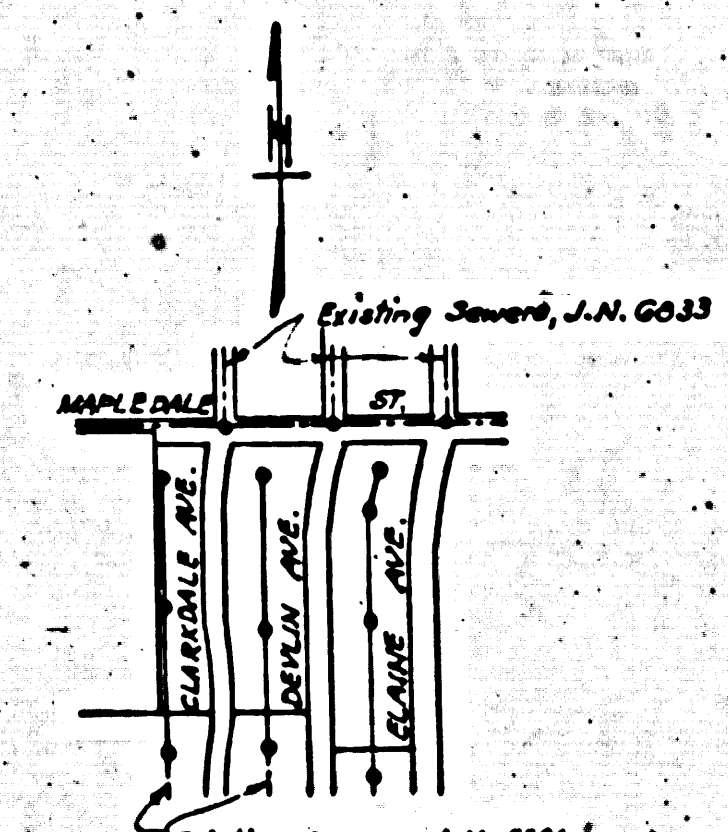
PRIVATE CONTRACT No. 1012
 W.S. 33
 SHEET 1 OF 1 SHEET

Scale: Vert. 1" = 4'
 Hor. 1" = 40' Dec. 1948

PREPARED IN THE OFFICES OF
JONES & GILBERT
 Reg. C.E. No. 1197

FOR LEGEND
 See Plan No. S-a-64

NOTE:
 Grades to which this improvement is to be constructed are shown on Plans and Profiles. Grade points for top of curb, center line of streets or center line of alleys are shown by circles on Profiles. All points between designated points the grade shall be established so as to conform to a straight line shown between said designated points.
 Elevation are in feet above U.S.G.S. Datum or Mean Sea Level.
 This drawing and the data hereon are hereby made a part of the specifications. Work shall be constructed according to specifications on file in the office of the County Engineer and shall be prosecuted only in the presence of the County Engineer. Before work can be started the Contractor must obtain a permit to excavate in County Streets from the L.A. County Road Dept. 211 So. Main St. and make a deposit with the County Engineer, 700 Fashion League Building, sufficient to cover the cost of construction inspection and Record Plans.



INDEX MAP
 Scale: 1" = 600'
 P.C. 1012

Revised 5-3-49
 Revision checked **JOMone** 5-3-49

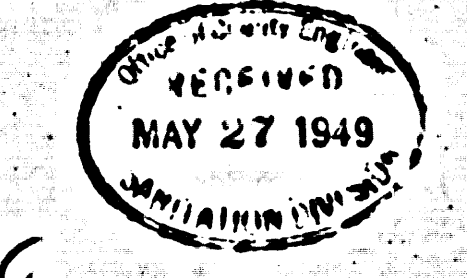
checked **McLaren** 6-19-49

COUNTY OF LOS ANGELES, CALIFORNIA

APPROVED **J. Edmund**
 County Engineer

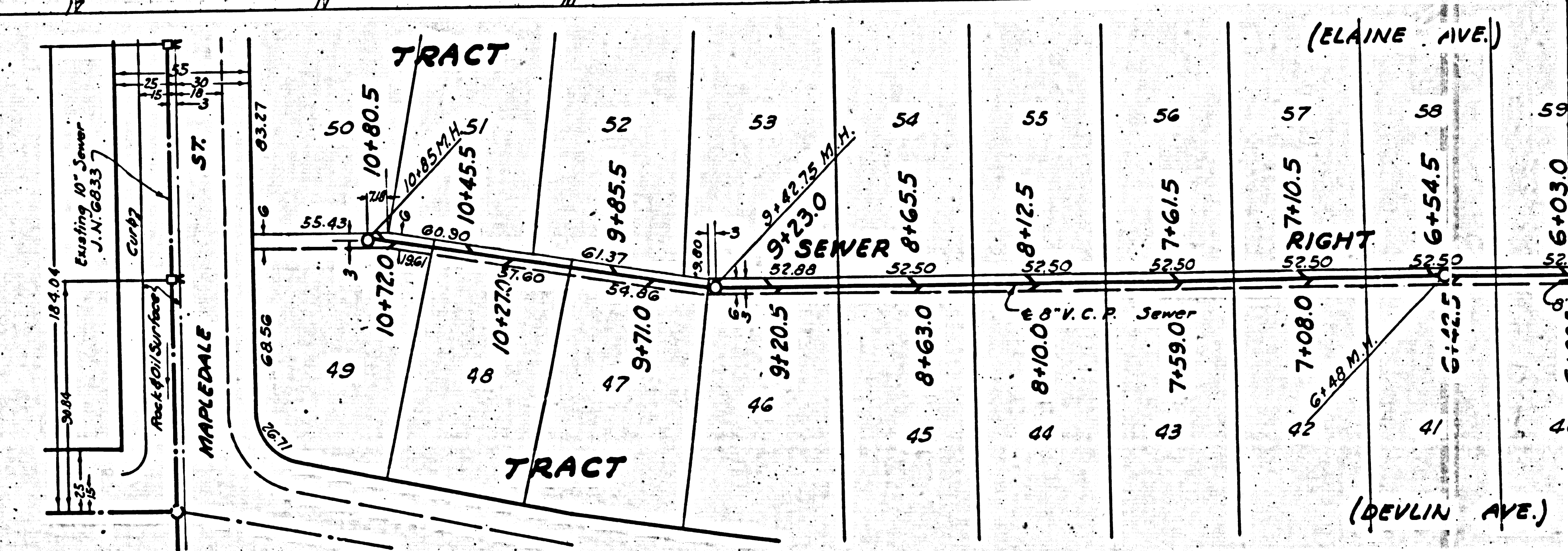
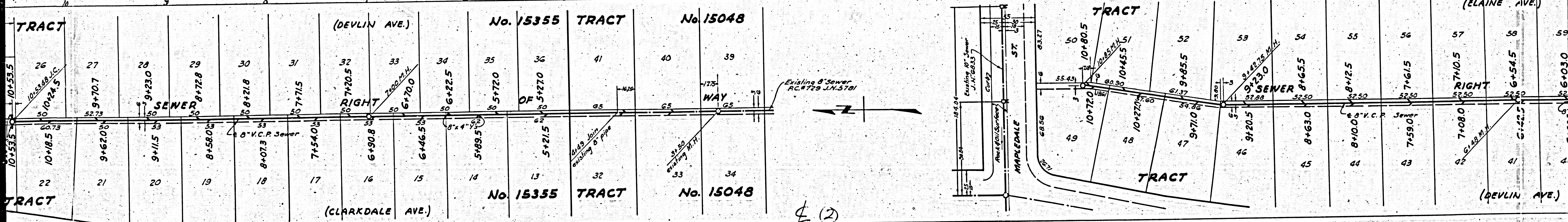
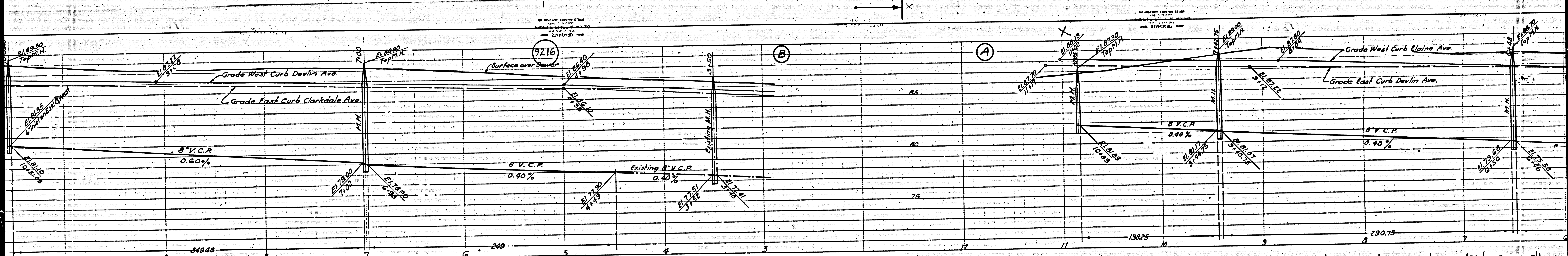
APPROVED **William**
 Chief Engineer of County
 Sanitation District No. 12

CHECKED **JOMone** Mar. 11, 1949
 Office of County Engineer, Reg. C.E. No. 6322



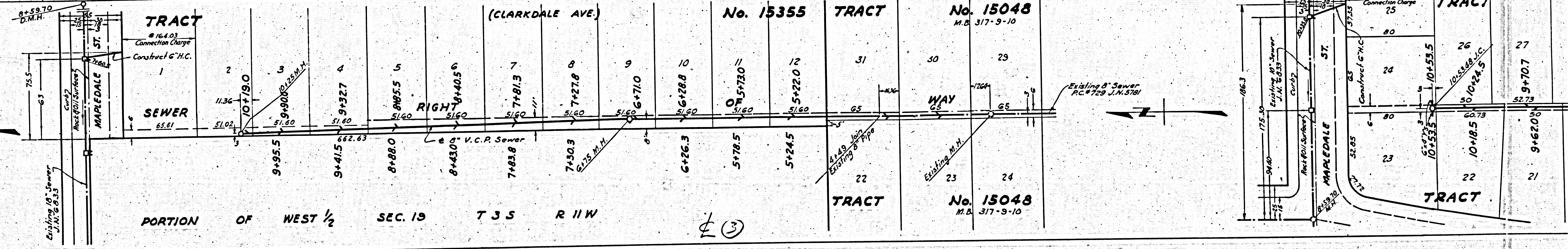
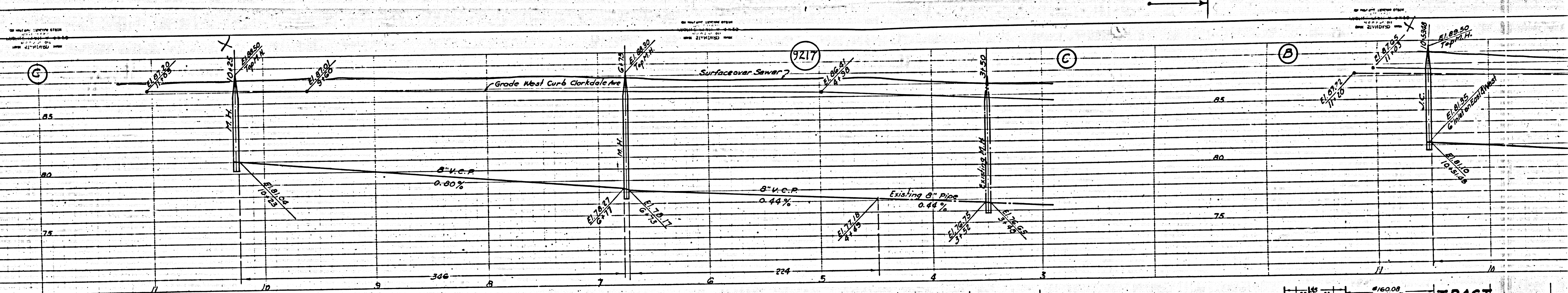
(ELAINE AVE.)		No. 15355 TRACT No. 15048 M.S. 317-9-10		No. 15355 TRACT No. 15048 M.S. 317-5-10	
57	58	59	60	61	62
7+08.0	6+54.5	6+03.0	5+52.5	4+99.0	49
RIGHT	6+42.5	6+00.5	5+50.0	4+96.5	287 WAY
52.50	52.50	52.50	52.50	52.50	60
7+08.0	6+42.5	6+00.5	5+50.0	4+96.5	60
42	41	40	39	38	37
(DEVLIN AVE.)					44

P.C. 1012



⊕ (2)

M6

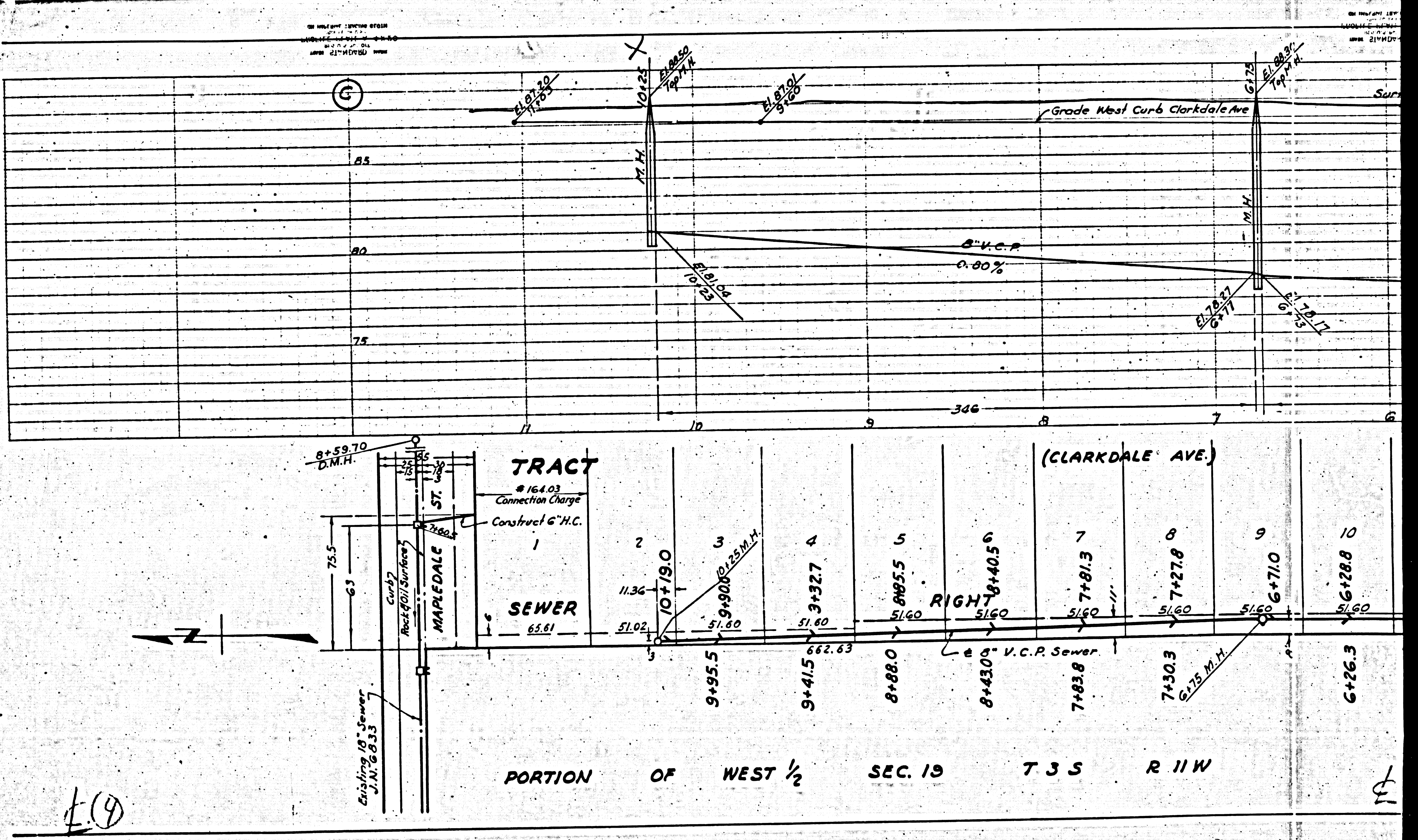


④

③

M5

P.C. 1012



M3

M5