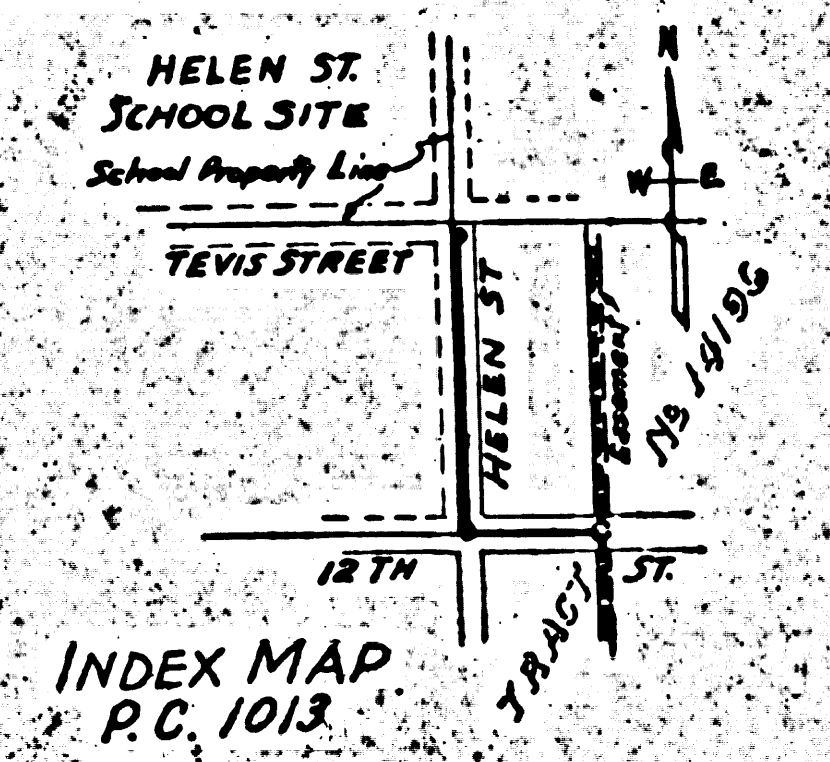
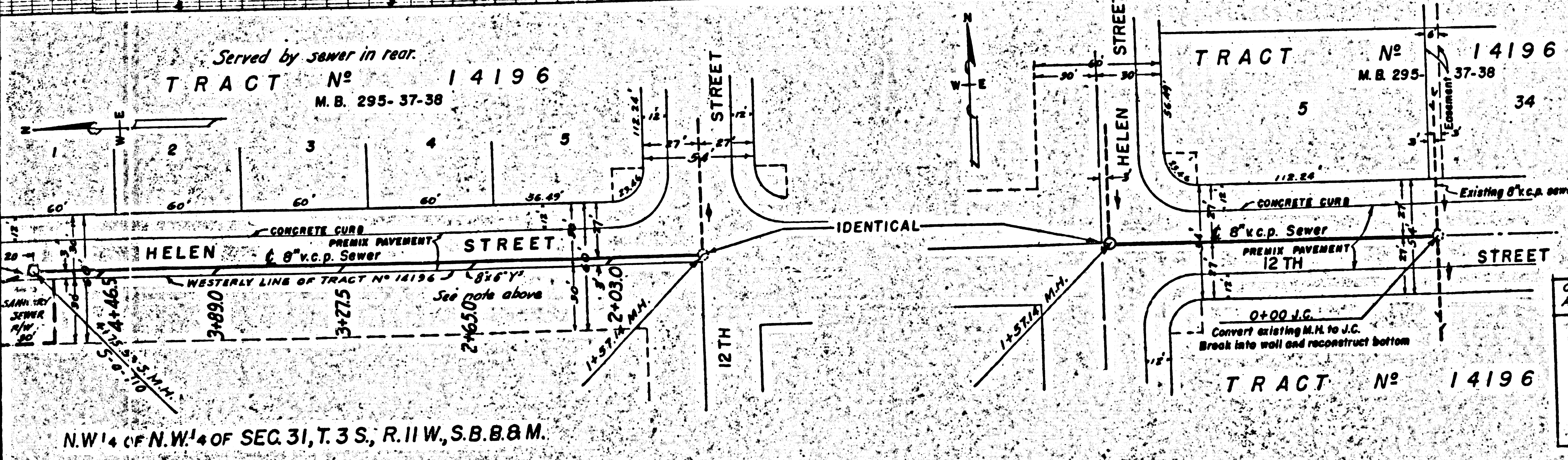


USE STANDARD MANHOLE FRAME AND COVER 3'-0" H.T.
 USE STANDARD STRENGTH PIPE
 USE CEMENT MORTAR FOR ALL VITRIFIED CLAY PIPE JOINTS.
 RESURFACE ALL TRENCH WITHIN PAVED AREA TO MEET L.A. COUNTY
 ROAD DEPARTMENT REQUIREMENTS.
 ALL STRUCTURES SHALL BE BRICK SEWER STRUCTURES.
 3'-0" H.T. COVER AS ABOVE

NOTE:
 THE REPRESENTATIVE OF THE COUNTY ENGINEER SHALL REVIEW AND APPROVE THE SAME.
 THE OWNER OF THE ADJACENT PROPERTY SHALL BE RESPONSIBLE FOR THE PROTECTION OF THE SAME.
 THE CONTRACTOR SHALL BE RESPONSIBLE FOR THE PROTECTION OF THE SAME.
 THE CONTRACTOR SHALL BE RESPONSIBLE FOR THE PROTECTION OF THE SAME.

PROFILE ALIGNMENT AND GRADE OF
SANITARY SEWERS
 TO BE CONSTRUCTED IN
12 TH STREET
 BETWEEN SANITARY SEWER RIGHT OF WAY
 IN TRACT N° 14196 AND HELEN STREET AND
HELEN STREET
 BETWEEN 12 TH STREET AND TEVIS STREET

PRIVATE CONTRACT N° 1013
 W.S. 33
 SHEET 1 OF 3 SHEETS
 SCALE VERTICAL 1" = 4'
 SCALE HORIZONTAL 1" = 40'
 MARCH, 1949
 PREPARED IN THE OFFICES OF
 G. E. NI ROOD, CIVIL ENGINEER



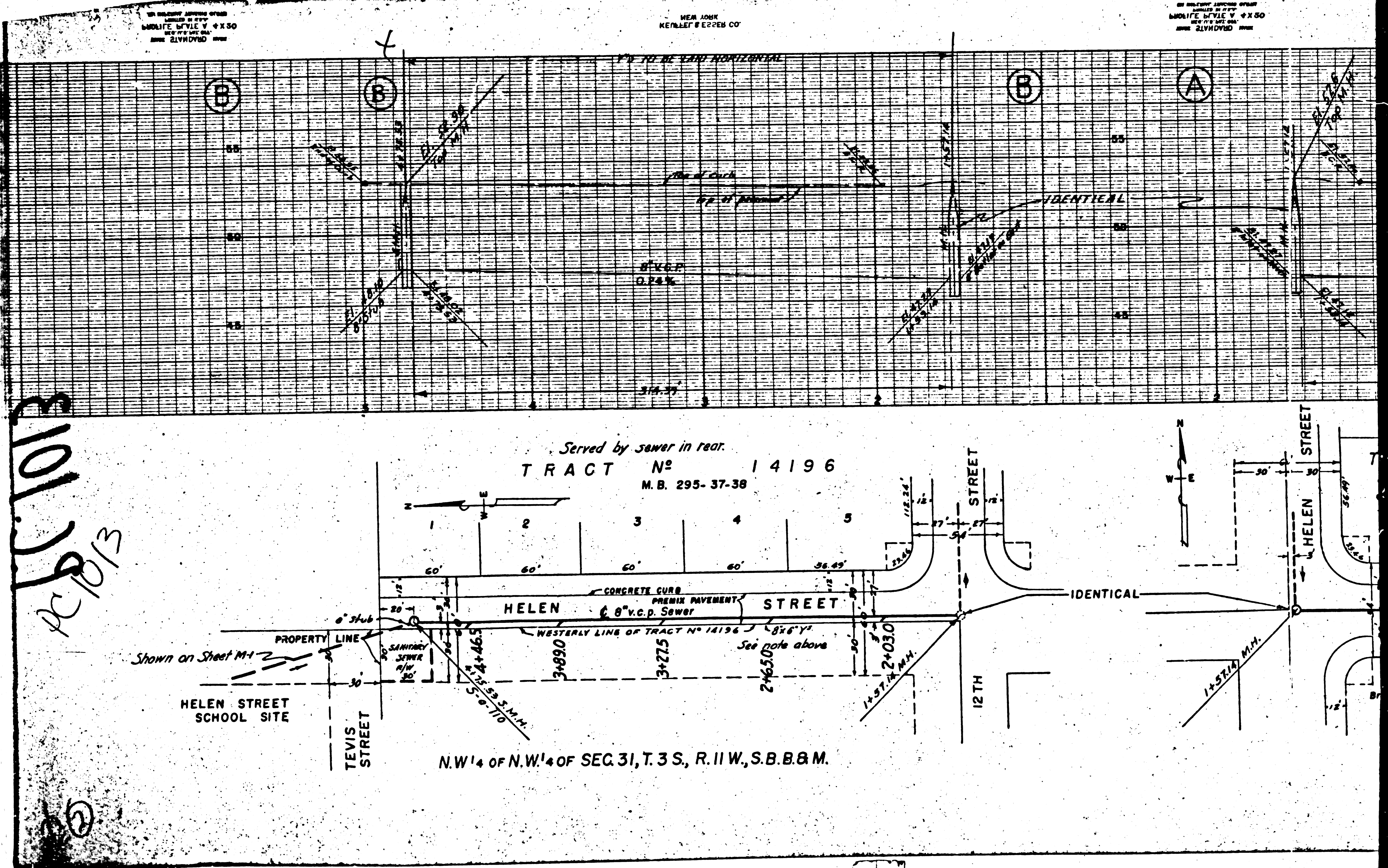
NOTE:
 GRADES TO WHICH THIS IMPROVEMENT IS TO BE CONSTRUCTED ARE SHOWN ON PLANS AND PROFILE.
 GRADE POINTS FOR TOP OF CURB, CENTER LINE OF STREET OR CENTER LINE OF ALLEY ARE SHOWN BY CIRCLES
 ON PROFILES. AT ALL POINTS BETWEEN DESIGNATED POINTS THE GRADE SHALL BE ESTABLISHED SO AS TO
 CONFORM TO A STRAIGHT LINE DRAWN BETWEEN SAID DESIGNATED POINTS.
 ELEVATIONS ARE IN FEET ABOVE U.S.S. DATUM PLANE MEAN SEA LEVEL.
 THIS DRAWING AND THE DATA HEREON ARE HEREBY MADE A PART OF THE SPECIFICATIONS.
 ENGINEER AND SHALL BE PROSECUTED ONLY IN THE PRESENCE OF THE COUNTY ENGINEER.
 BEFORE WORK CAN BE STARTED THE CONTRACTOR MUST OBTAIN A PERMIT TO ENCASE IN COUNTY
 STREETS FROM THE L.A. COUNTY ROAD DEPARTMENT, 811 SOUTH MAIN STREET, AND MAKE A DEPOSIT WITH THE
 COUNTY ENGINEER, 700 FASHION LEAGUE BUILDING, SUFFICIENT TO COVER THE COST OF CONSTRUCTION
 INSPECTION AND RECORD PLANS.
 IF WORK IS TO BE DONE IN A STATE HIGHWAY, A PERMIT MUST BE OBTAINED FROM THE STATE OF CALIFORNIA
 DIVISION OF HIGHWAYS, 208 STATE BUILDING, AFTER MAKING DEPOSIT WITH THE COUNTY ENGINEER.

CALIFORNIA DIVISION OF ARCHITECTURE APPROVAL		APPROVED BY DATE		PROFILE ALIGNMENT & GRADE OF SANITARY SEWERS	
STATE OF CALIFORNIA - DEPARTMENT OF PUBLIC WORKS DIVISION OF ARCHITECTURE	APPROVED 3-16-49	DATE	1-11-49	PROJECT #5	ADMINISTRATION & CLASSROOM BUILDINGS
APPROVED 3-16-49	APPROVED 3-16-49	DATE	1-11-49	FOR ARTESIA SCHOOL DISTRICT	ARTESIA, CALIFORNIA
APPROVED 3-16-49	APPROVED 3-16-49	DATE	1-11-49	BY	JEROME C. DE HETRE A. I. A.
APPROVED 3-16-49	APPROVED 3-16-49	DATE	1-11-49	NO. 9	COMPTON, CALIFORNIA

COUNTY OF LOS ANGELES, CALIFORNIA.
 APPROVED [Signature] COUNTY ENGINEER
 APPROVED [Signature] CHIEF ENGINEER OF COUNTY SANITARY DISTRICT NO. 2
 CHECKED BY [Signature] Mar. 16, 1949
 OFFICE OF COUNTY ENGINEER, R.E.C. 6222

RECEIVED JUN 30 1949

check & return 10-20-49



ACC 1013
 10/13

Served by sewer in rear.
 TRACT N² 14196
 M.B. 295-37-38

HELEN STREET SCHOOL SITE
 TEVIS STREET
 12 TH STREET
 HELEN STREET

N.W. 1/4 OF N.W. 1/4 OF SEC 31, T.3 S., R. 11 W., S.B. & M.