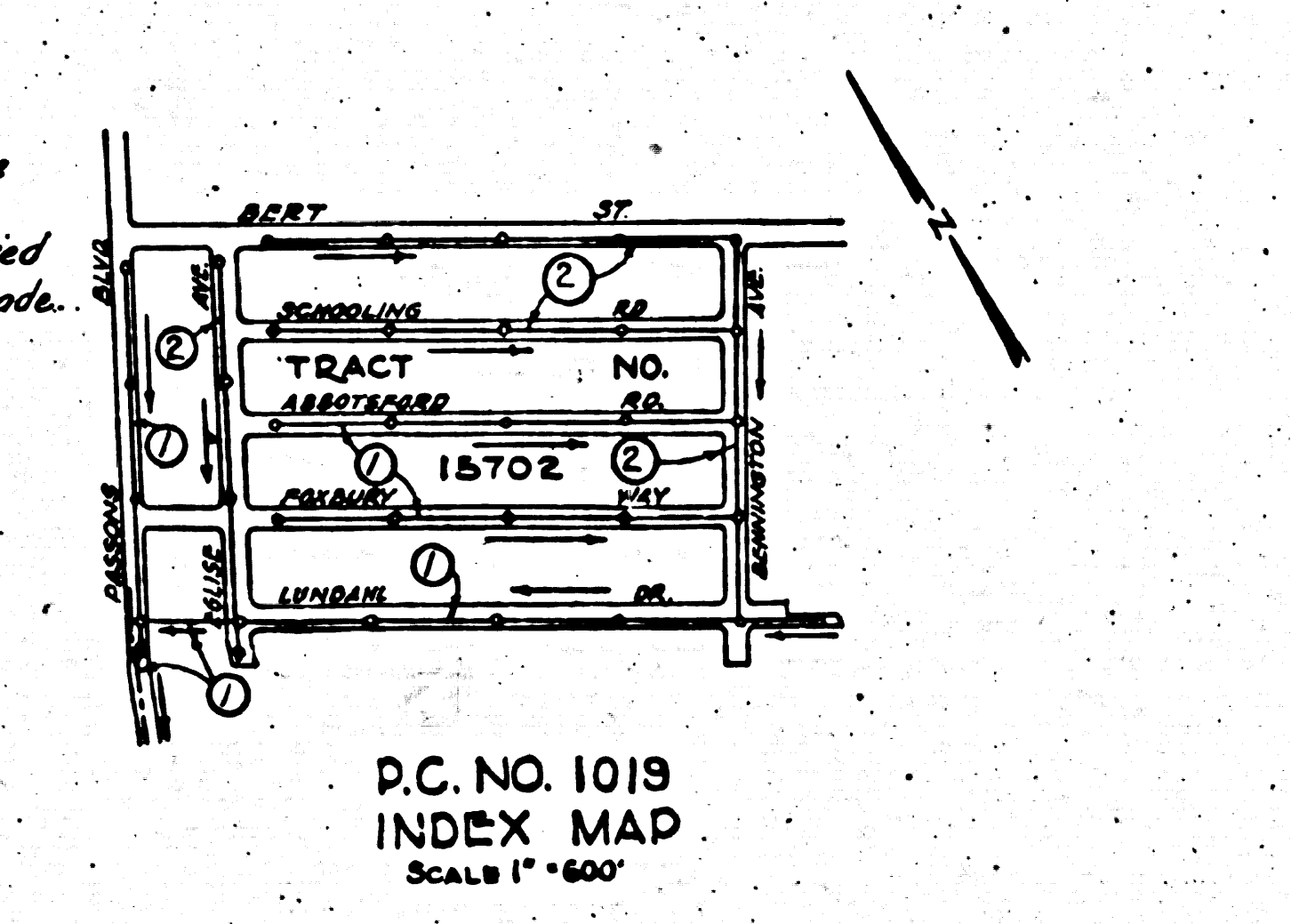
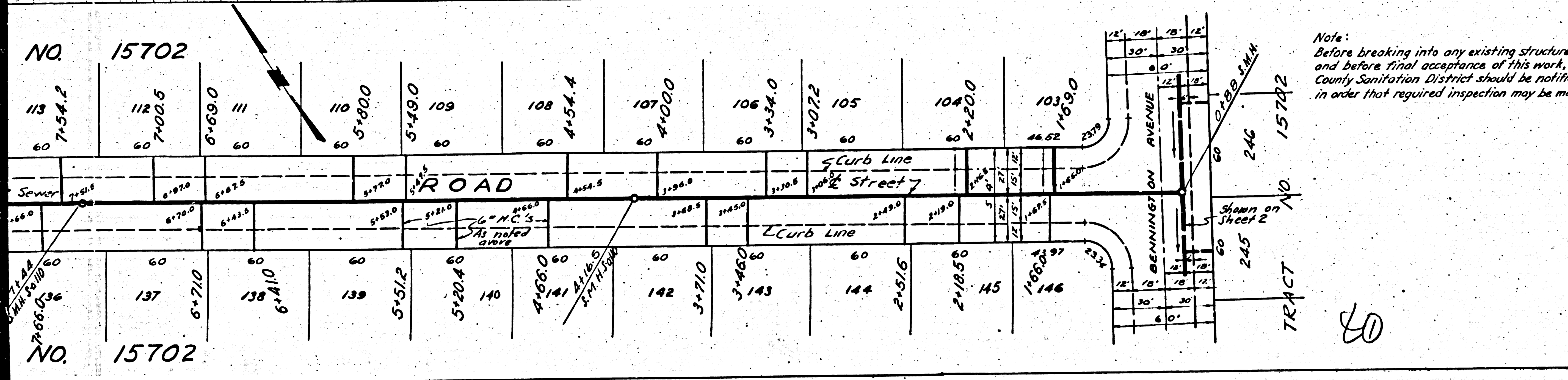


PROFILE, ALIGNMENT AND GRADE OF
SANITARY SEWERS
 TO BE CONSTRUCTED IN
 ABBOTSFORD ROAD
 BETWEEN BENNINGTON AVENUE AND ELLISE AVENUE
 CONGRUITY TRACT
 BETWEEN BENNINGTON AVENUE AND ELLISE AVENUE
 LUNDGREN DRIVE
 230' EAST OF BENNINGTON AVENUE TO ELLISE AVENUE
 PARSONS BLVD
 BETWEEN BART ST AND 1411 1/2 SOUTH BART ST.
 PRIVATE CONTRACT NO. 1019
 SHEET 1 OF 2
 W.S. 36 - SHEETS

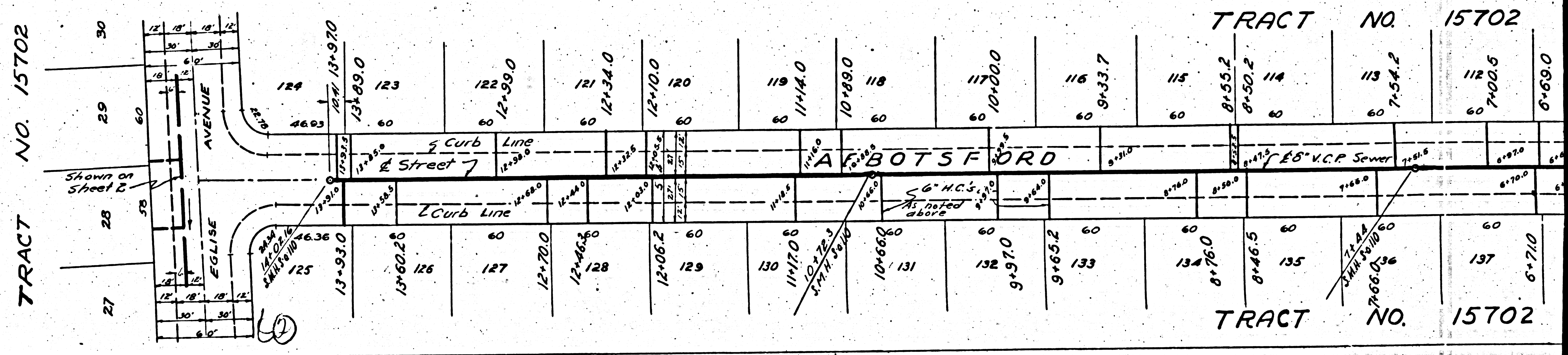
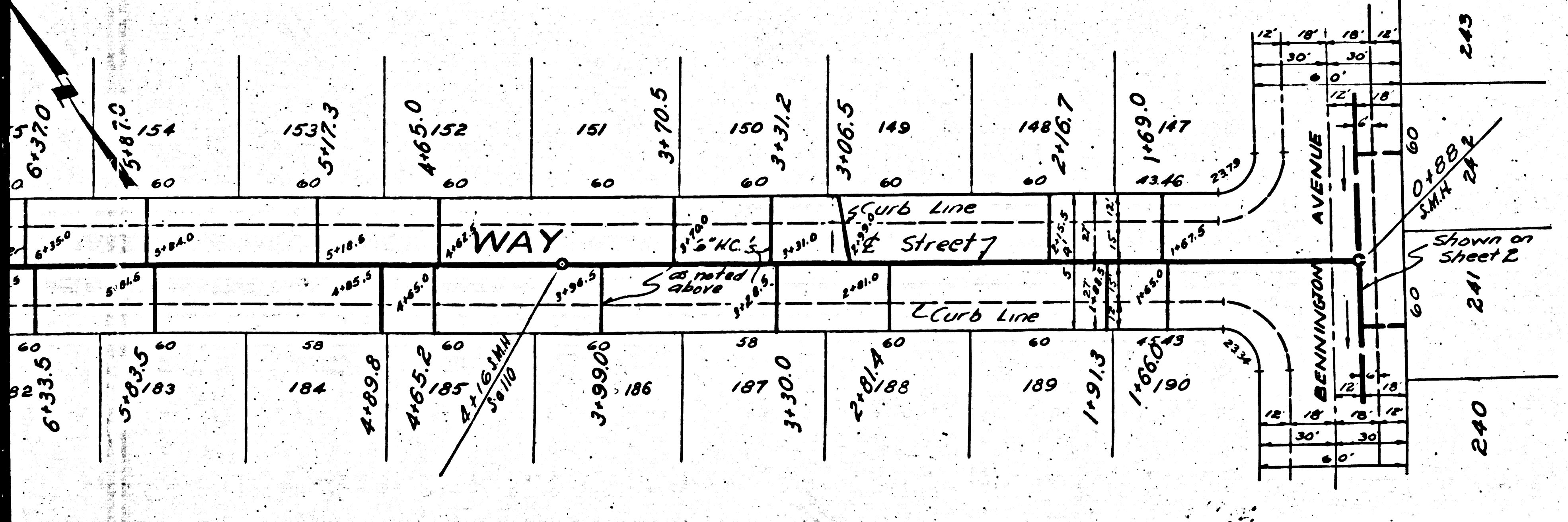
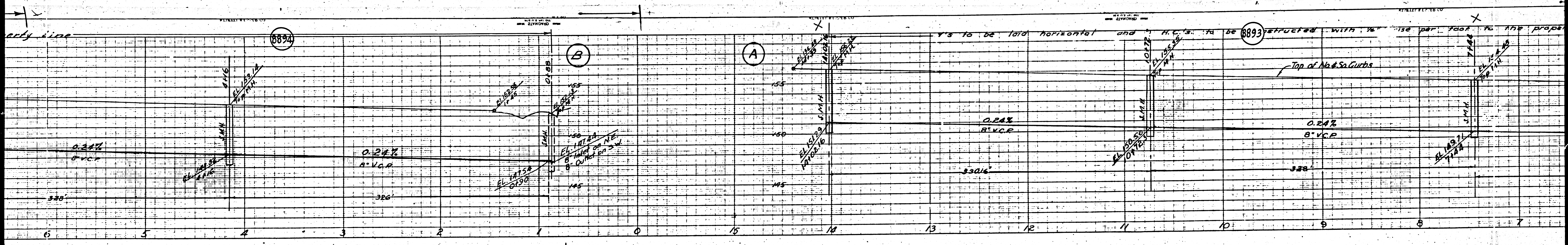
VERT. 1" = 4'
 SCALE, HORIZ. 1" = 40'

PREPARED IN THE OFFICE OF
 HAROLD A. BARNETT
 BY *Harold A. Barnett*
 REG. CE. 1278



NOTE:
 Grades to which this improvement is to be constructed are shown on plans and profile. Grade points for top of curb, center line of street are shown by circles on Profiles. At all points between designated points the grade shall be established so as to conform to a straight line drawn between said designated points.
 Elevations are in feet above U.S.G.S. datum or mean sea level.
 This drawing and the data hereon are hereby made a part of the specifications. Work shall be constructed according to specifications on file in the office of the County Engineer and shall be prosecuted only in the presence of the County Engineer.
 Before work can be started, the Contractor must obtain a permit to excavate in County streets from the L.A. County Road Department, 211 South Main Street and make a deposit with the County Engineer sufficient to cover the cost of construction, inspection, and record plans. RM. 830 - 108 W. 2nd ST.
 If work is to be done in a State Highway, a permit must be obtained from the State of California, Division of Highways, 808 State Building, after making a deposit with the County Engineer.
 COUNTY OF LOS ANGELES, CALIFORNIA

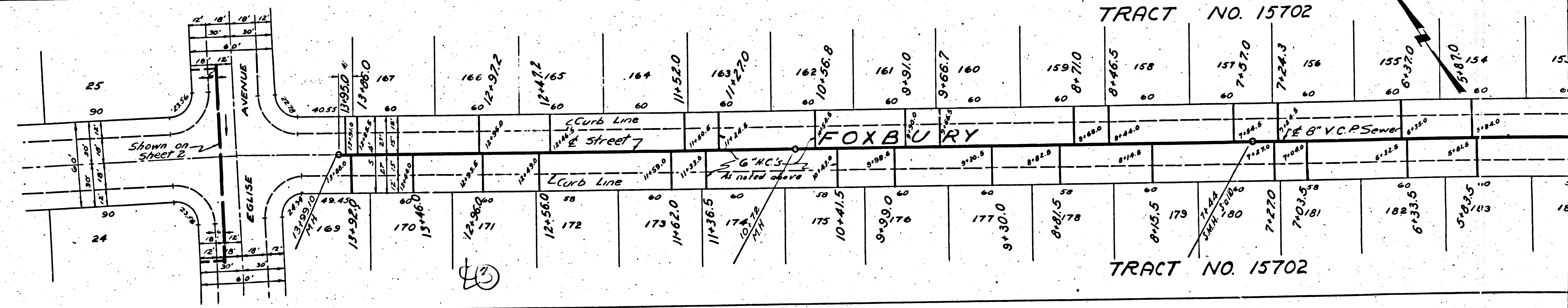
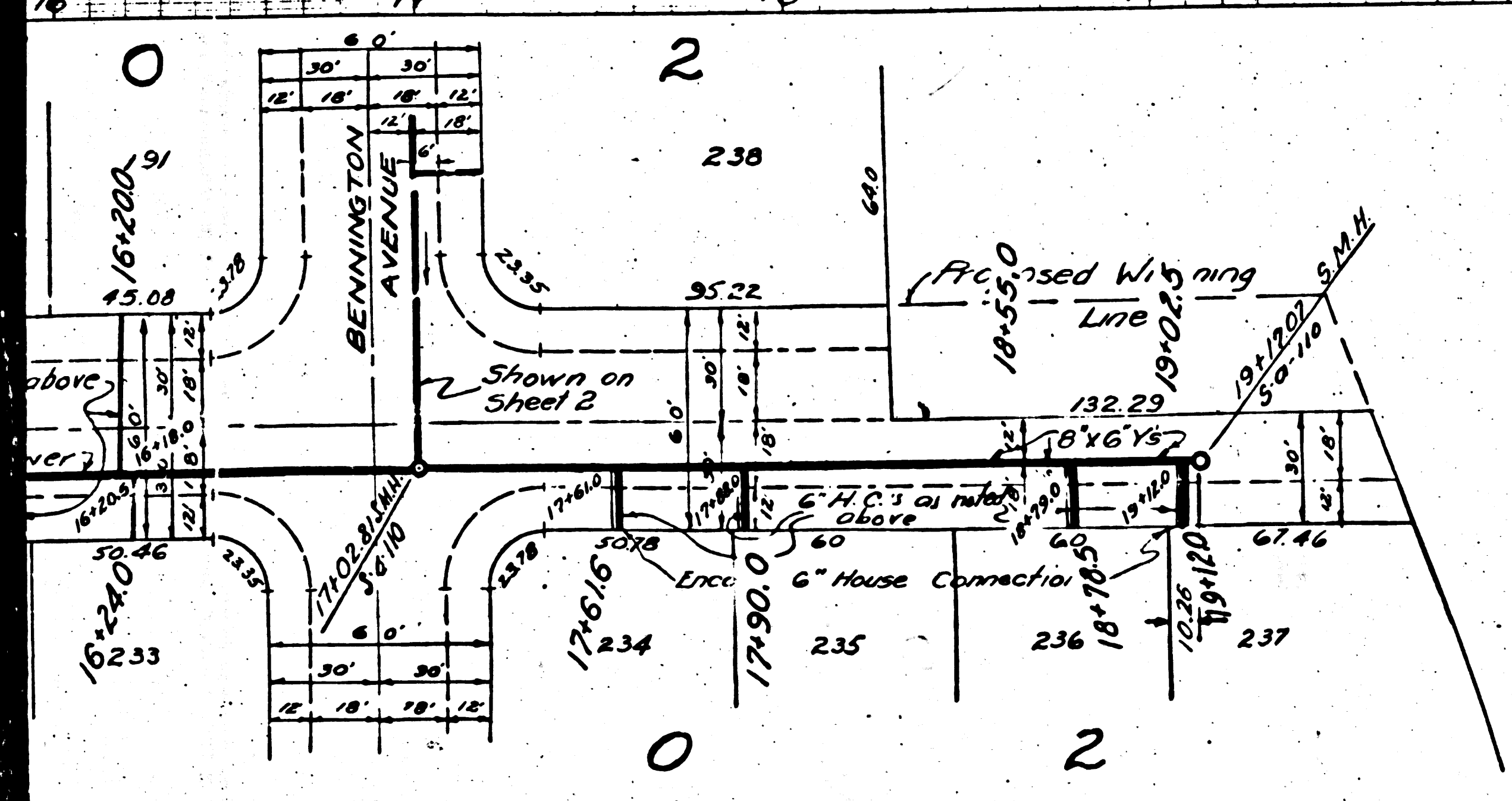
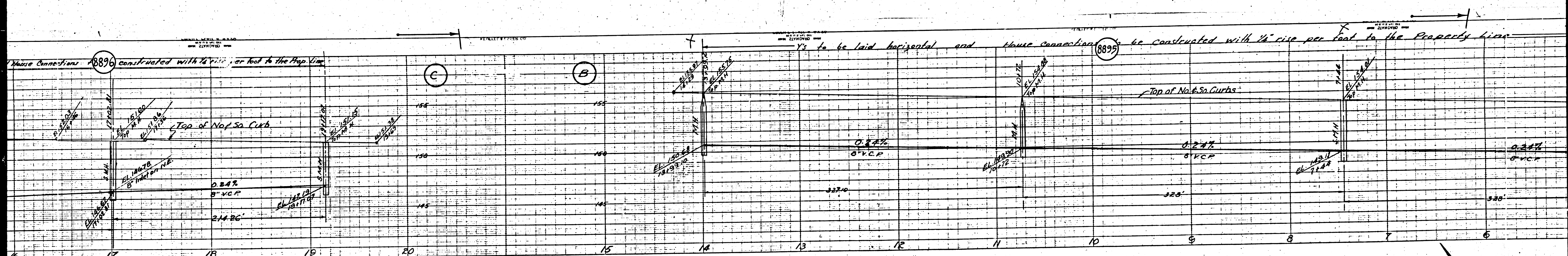
Approved *Walter C. McLean*
 County Engineer
 Approved *Walter C. McLean*
 Chief Engineer of County Sanitation
 Checked by *Walter C. McLean*
 Office of County Engineer, R.E. 12218



TRACT NO. 15702

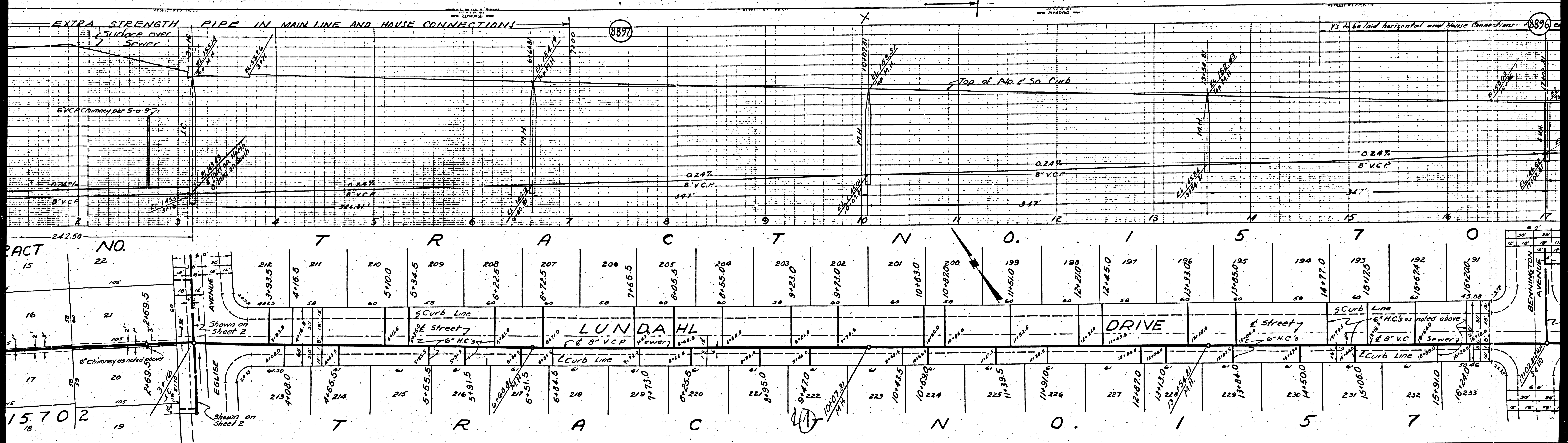
TRACT NO. 15702

TRACT NO. 15702



TRACT NO. 15702

TRACT NO. 15702



8897

8896

TRACT NO. 15 22
16 21
17 20
18 19

15702
15703
15704
15705
15706
15707
15708
15709
15710
15711
15712
15713
15714
15715
15716
15717
15718
15719
15720
15721
15722
15723
15724
15725
15726
15727
15728
15729
15730
15731
15732
15733
15734
15735
15736
15737
15738
15739
15740
15741
15742
15743
15744
15745
15746
15747
15748
15749
15750
15751
15752
15753
15754
15755
15756
15757
15758
15759
15760
15761
15762
15763
15764
15765
15766
15767
15768
15769
15770
15771
15772
15773
15774
15775
15776
15777
15778
15779
15780
15781
15782
15783
15784
15785
15786
15787
15788
15789
15790
15791
15792
15793
15794
15795
15796
15797
15798
15799
15800

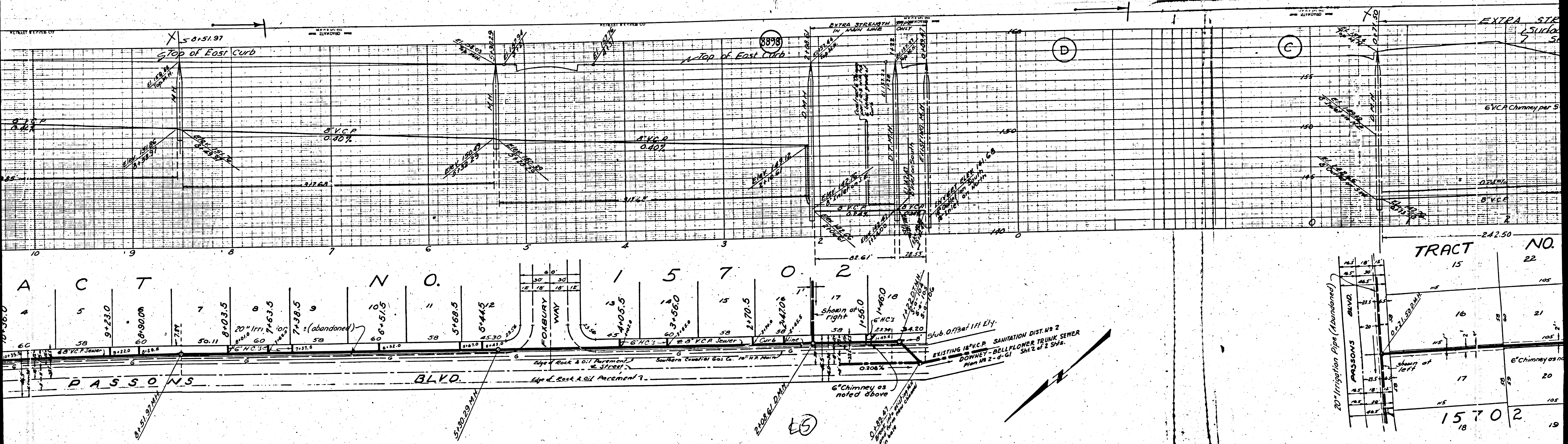
T R A C T N O . I 5 7

LUNDAHL DRIVE

EGLISE AVENUE
BENNINGTON AVENUE
STREET 2

6" VCP
6" H.C.'s
6" Chimney
Curb Line
Street

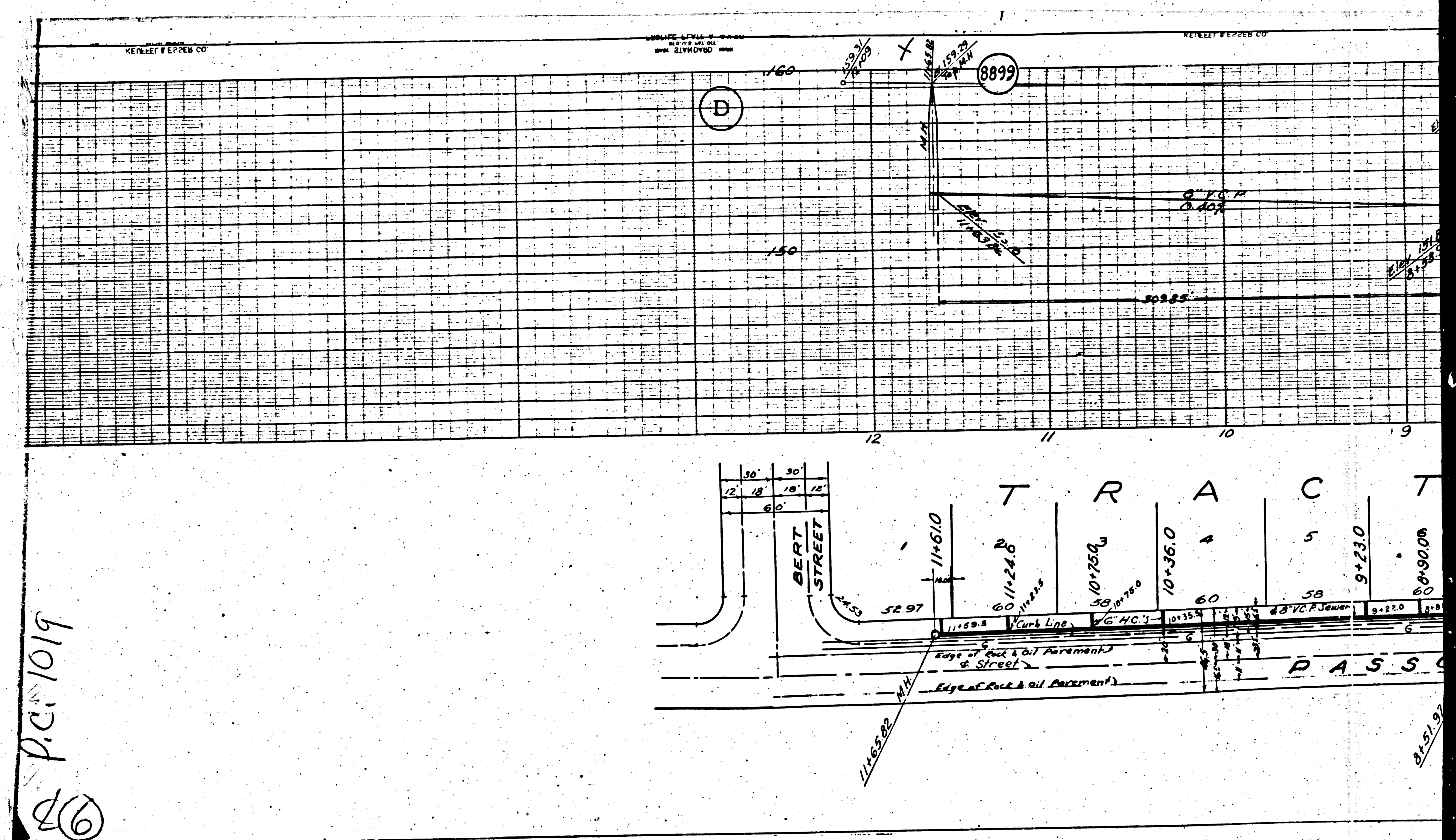
0.24%
347'

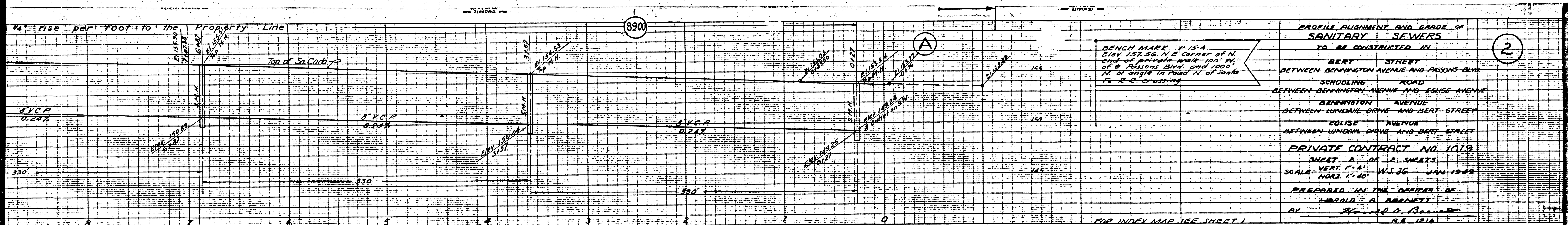


TRACT NO. 15702	
15	22
16	21
17	20
18	19

EXISTING 18" V.C.P. SANITATION DIST. NO. 2
 DOWNNEY - BELLFLOWER TRUNK SEWER
 Man No. 2 - 4-GI
 5/12 of 2 SWS.

(E5)





BENCHMARK P-15-A
 Elev 153.56 N.E. Corner of N.
 end of private block 100 ft.
 of E. Parsons Blvd. and 1000 ft.
 N. of angle in road N. of Janta
 Fe-R-E crossing

PROFILE, ALIGNMENT AND GRADE OF
 SANITARY SEWERS
 TO BE CONSTRUCTED IN

2

BERT STREET
 BETWEEN BENNINGTON AVENUE AND PARSONS BLVD

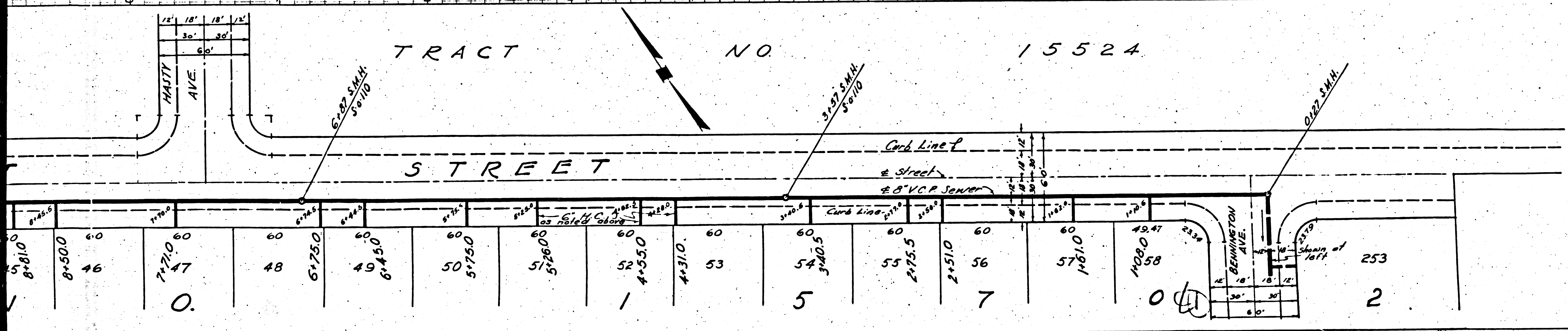
SCHOOLING ROAD
 BETWEEN BENNINGTON AVENUE AND EGELSE AVENUE

BENNINGTON AVENUE
 BETWEEN LUNDAL DRIVE AND BERT STREET

EGELSE AVENUE
 BETWEEN LUNDAL DRIVE AND BERT STREET

PRIVATE CONTRACT NO. 1019
 SHEET 2 OF 2 SHEETS
 SCALE: VERT. 1" = 4'
 HORIZ. 1" = 40'
 JAN. 1949

PREPARED IN THE OFFICES OF
 HAROLD A. BARNETT
 BY Harold A. Barnett
 R.E. 1216



TRACT NO 15524

STREET

FOR CONSTRUCTION NOTES
 SEE SHEET 1

RECEIVED
 APR 18 1949
 SANITATION DIVISION

Checked - McFarren - 6-2-49

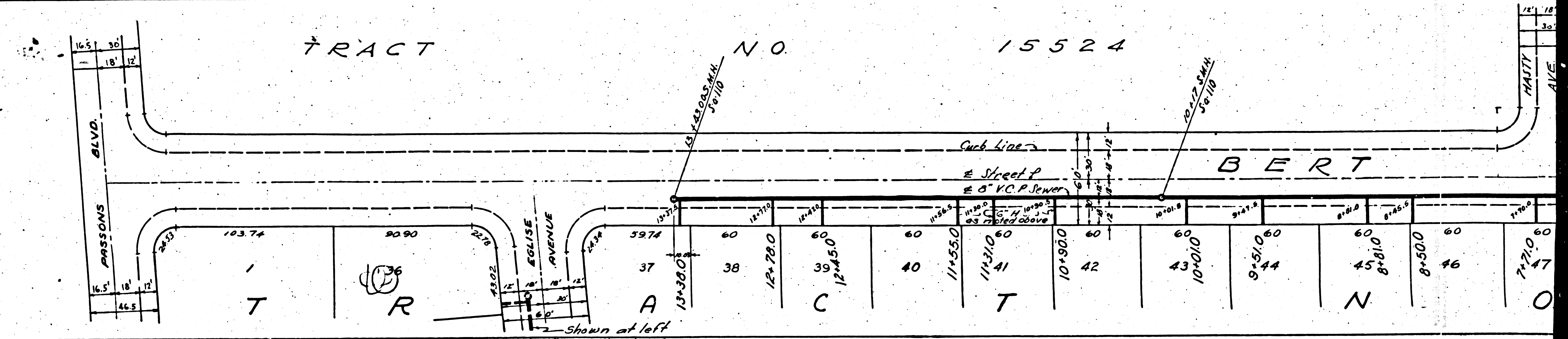
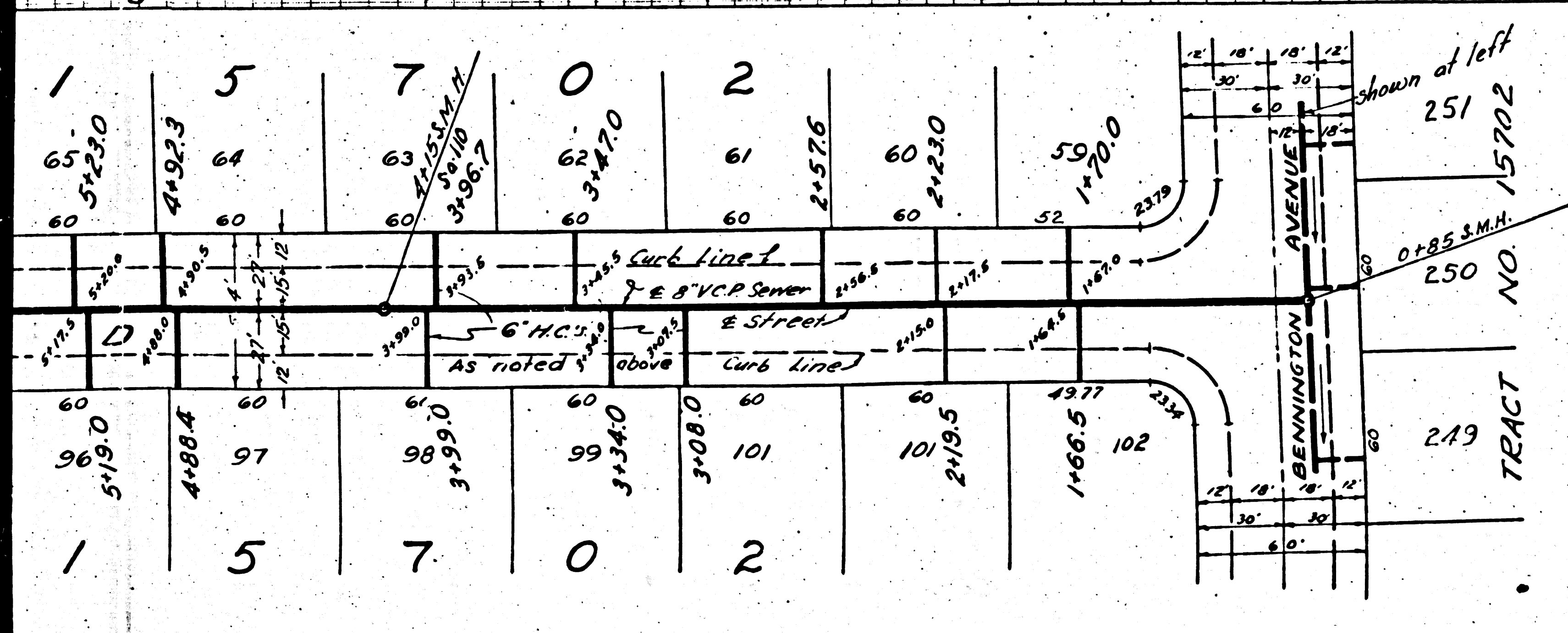
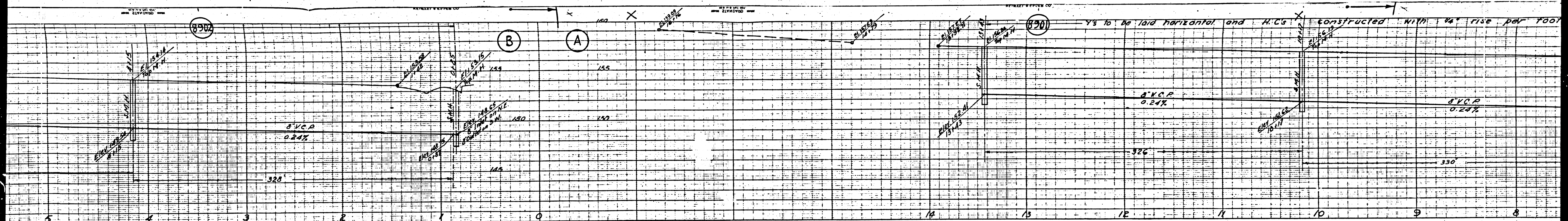
COUNTY OF LOS ANGELES, CALIFORNIA

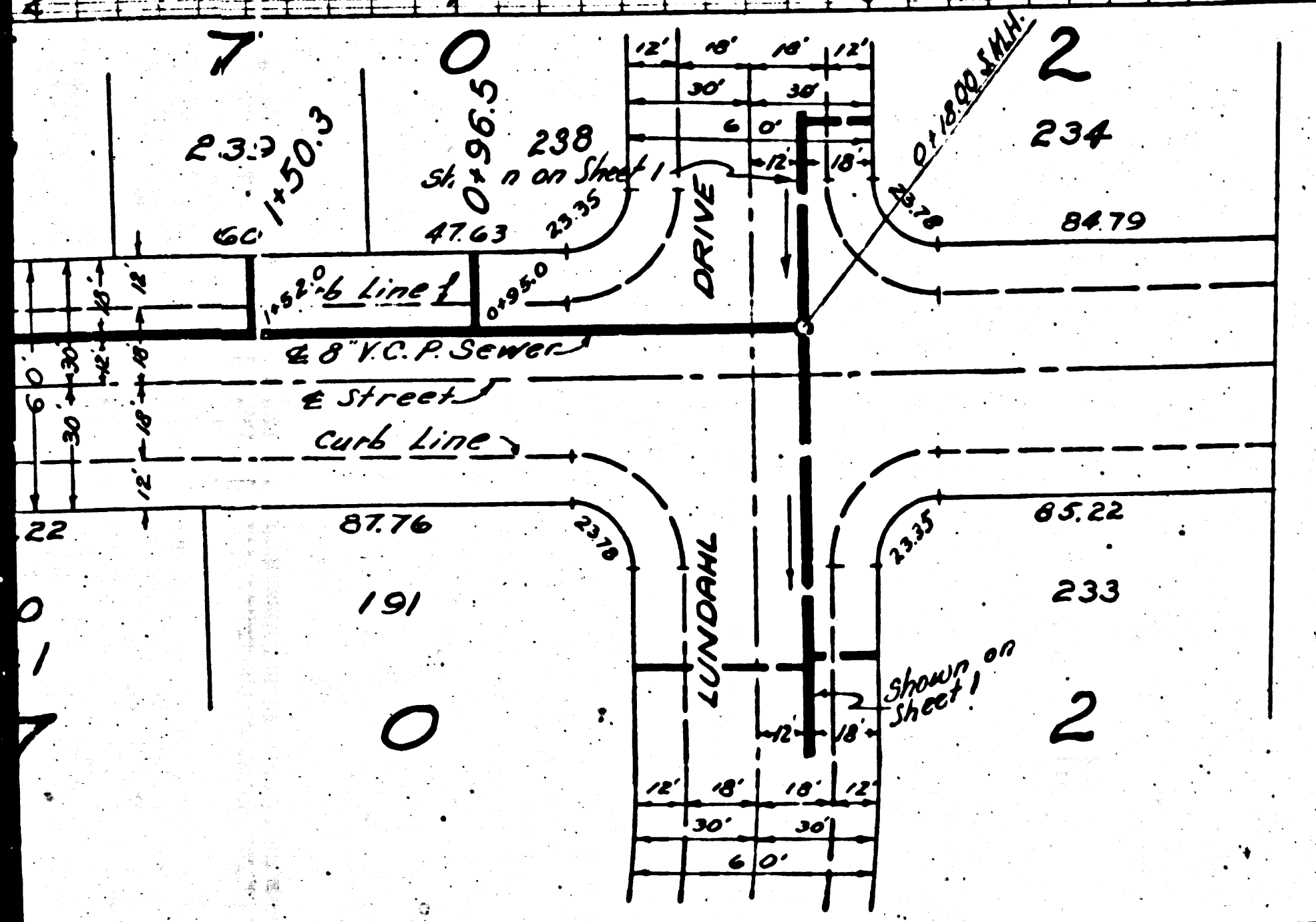
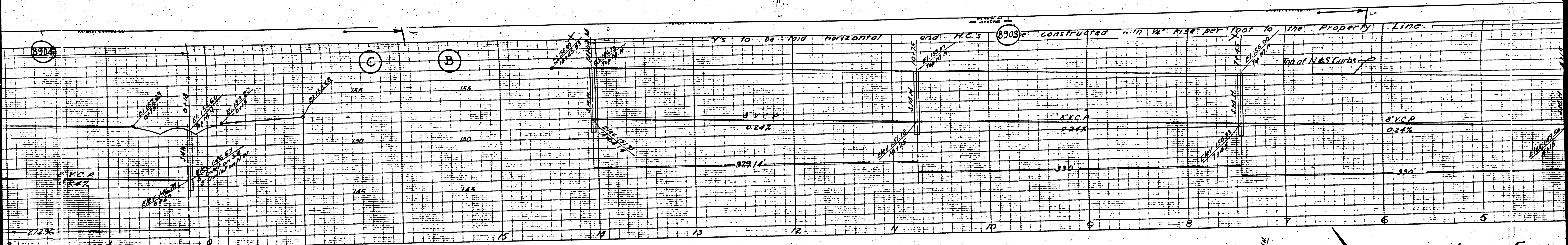
Approved: *[Signature]*
 County Engineer

Approved: *[Signature]*
 Chief Engineer of County Sanitation
 District No. 2

Checked by: *[Signature]* 6-11-49
 Office of County Engineer, R.E. 3205

C 1019

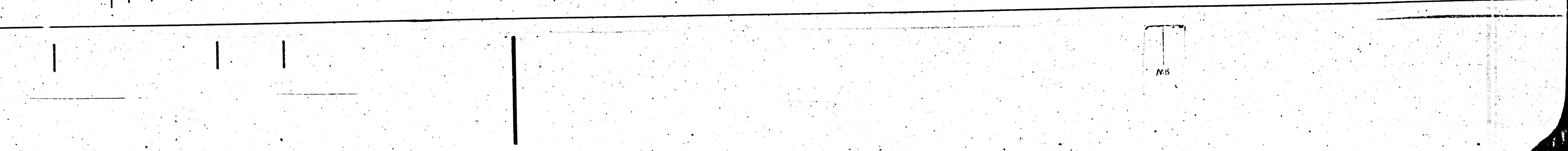


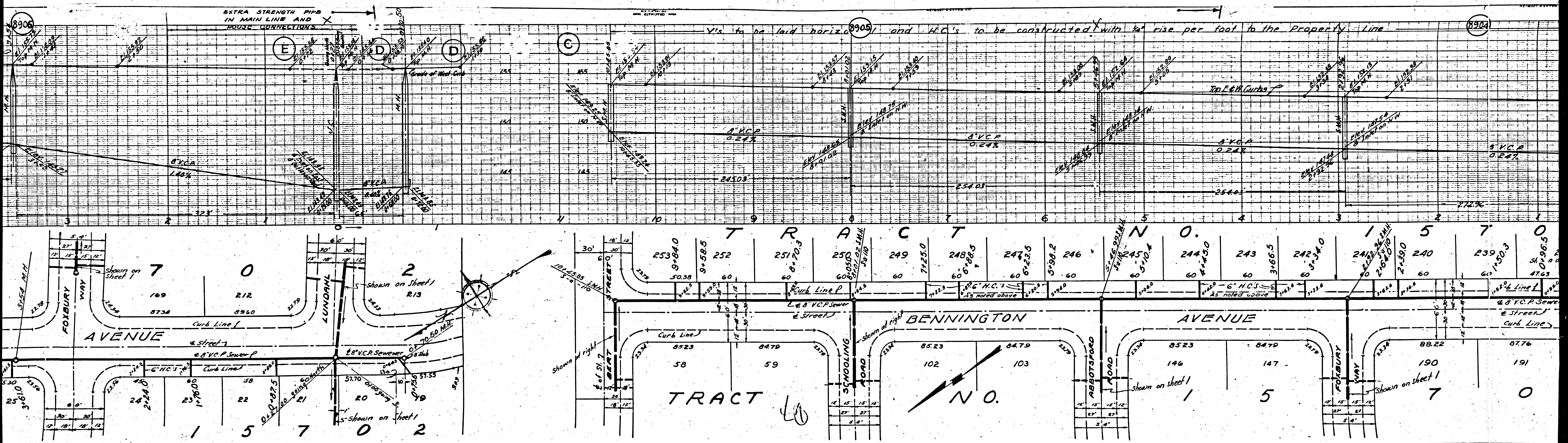


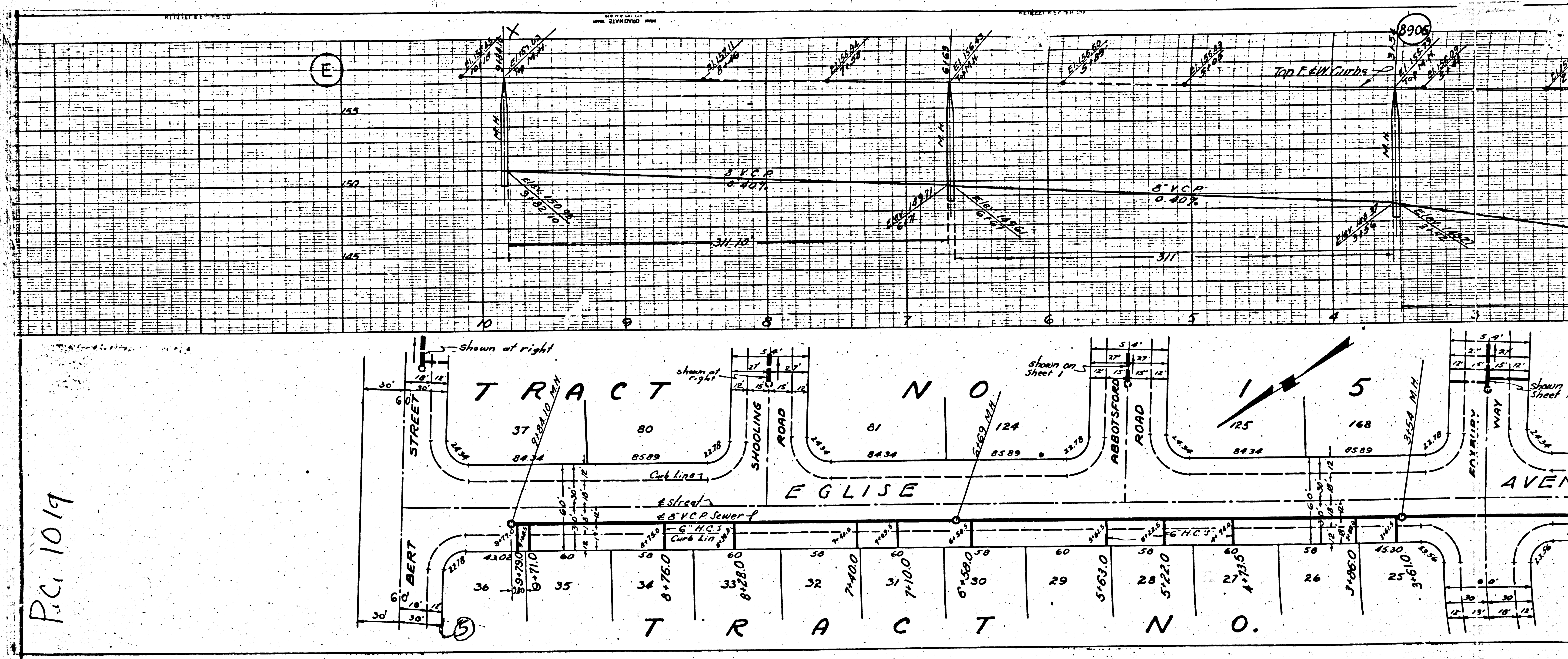
TRACT NO. 15702

33	80	79	78	77	76	75	74	73	72	71	70	69	68	67	66	65	64
14+00.5	13+03.0	12+97.0	11+56.5	11+32.7	10+87.0	9+97.2	9+72.0	8+77.0	8+42.0	7+91.0	7+03.0	6+73.0	6+03.0	5+77.0	5+23.0	4+52.3	3+84.4
13+97.3	13+63.5	12+74.2	12+40.5	11+79.5	11+14.3	10+83.2	10+00.5	9+69.2	8+74.5	7+93.0	7+27.6	6+94.5	6+69.3	5+88.0	5+19.0	4+88.4	3+84.4
T R A C T N O .																	
C H O L I N R A D																	
T R A C T N O .																	

As noted above







PC 1019