

**SHEET 1 OF 5 SHEETS**

VERT. 1" = 4'

HORIZ. 1" = 40'

PREPARED BY **W.A. TREADWELL JR.**

REG. C.E. No. 410

FOR LEGEND SEE PLAN 5-a-64

**NOTE:** Grades to which this improvement is to be constructed are shown on plans and profile. Grade points for top of curb, center line of street or center line of alley are shown by circles on profiles. All points between designated points the grade shall be established as to conform to a straight line drawn between said designated points.

Distances are in feet unless otherwise stated.

This drawing and the data herein are hereby made a part of the specifications for the work to be constructed and shall be governed only in the presence of the County Engineer.

Before work can be started, the contractor must obtain a permit to establish in County records from the County Board of Supervisors, 211 to 212 County Street, and make a deposit with the County Engineer, 828 Co. Engineer Bldg. sufficient to cover the cost of construction (including a seal record plan).

Work is to be done in a State Highway project must be obtained from the State of California, Division of Highways, 808 State Bldg. after making the deposit with the County Engineer.

**COUNTY OF LOS ANGELES CALIFORNIA**

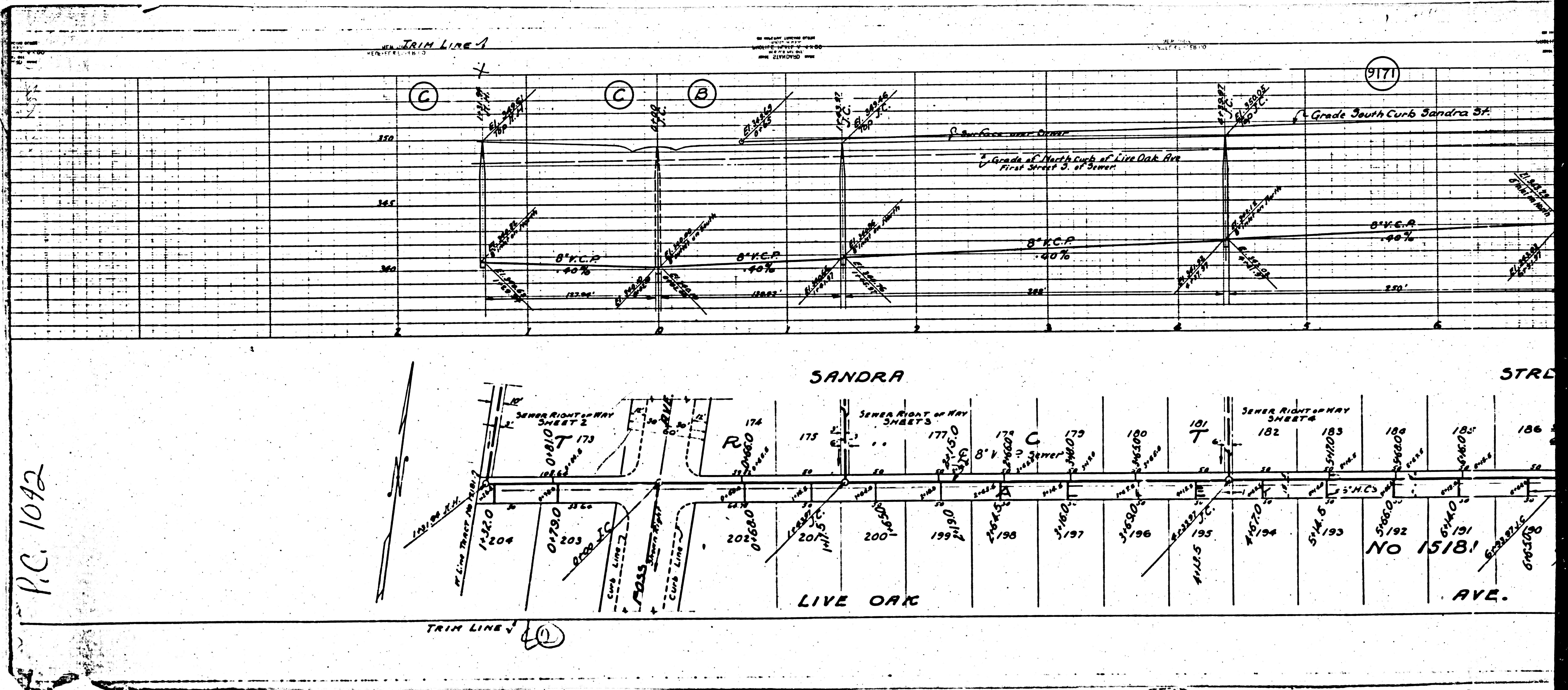
APPROVED **W.A. Treadwell Jr.**  
County Engineer

APPROVED **C.R. Miller**  
Acting City Engineer  
Sanitation District No. 12

CHECKED BY **James T. Neuman** 5/1/49  
Office of County Engineer, Box CE No. 703

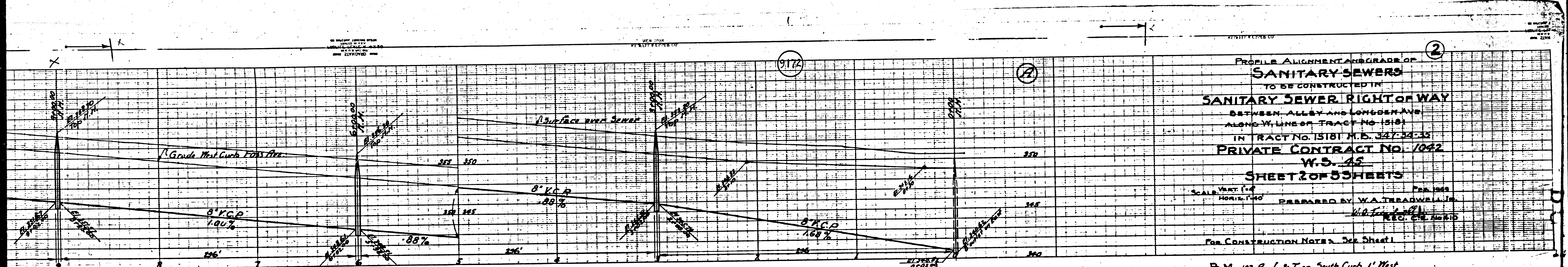
RECEIVED JUN 21 1949





P.C. 1042

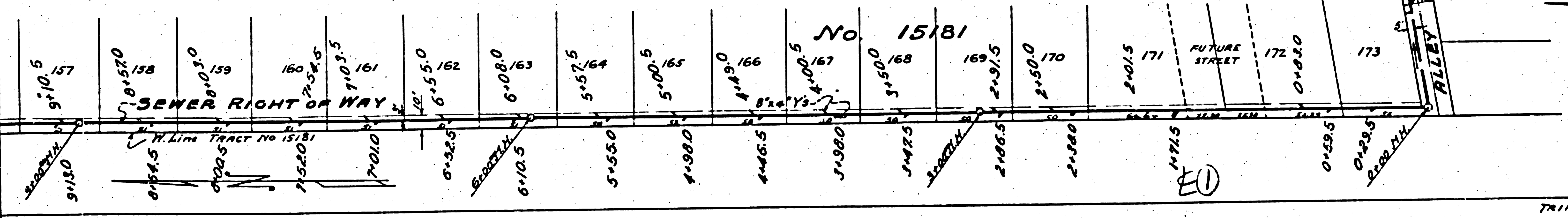
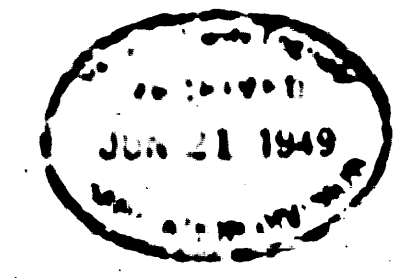




PROFILE ALIGNMENT AND GRADE OF  
**SANITARY SEWERS**  
 TO BE CONSTRUCTED IN  
**SANITARY SEWER RIGHT OF WAY**  
 BETWEEN ALLEY AND LONGER AVE.  
 ALONG W. LINE OF TRACT NO. 15181  
 IN TRACT NO. 15181 M.B. 347-34-35  
**PRIVATE CONTRACT NO. 1642**  
**W.S. 45**  
**SHEET 2 OF 55 SHEETS**

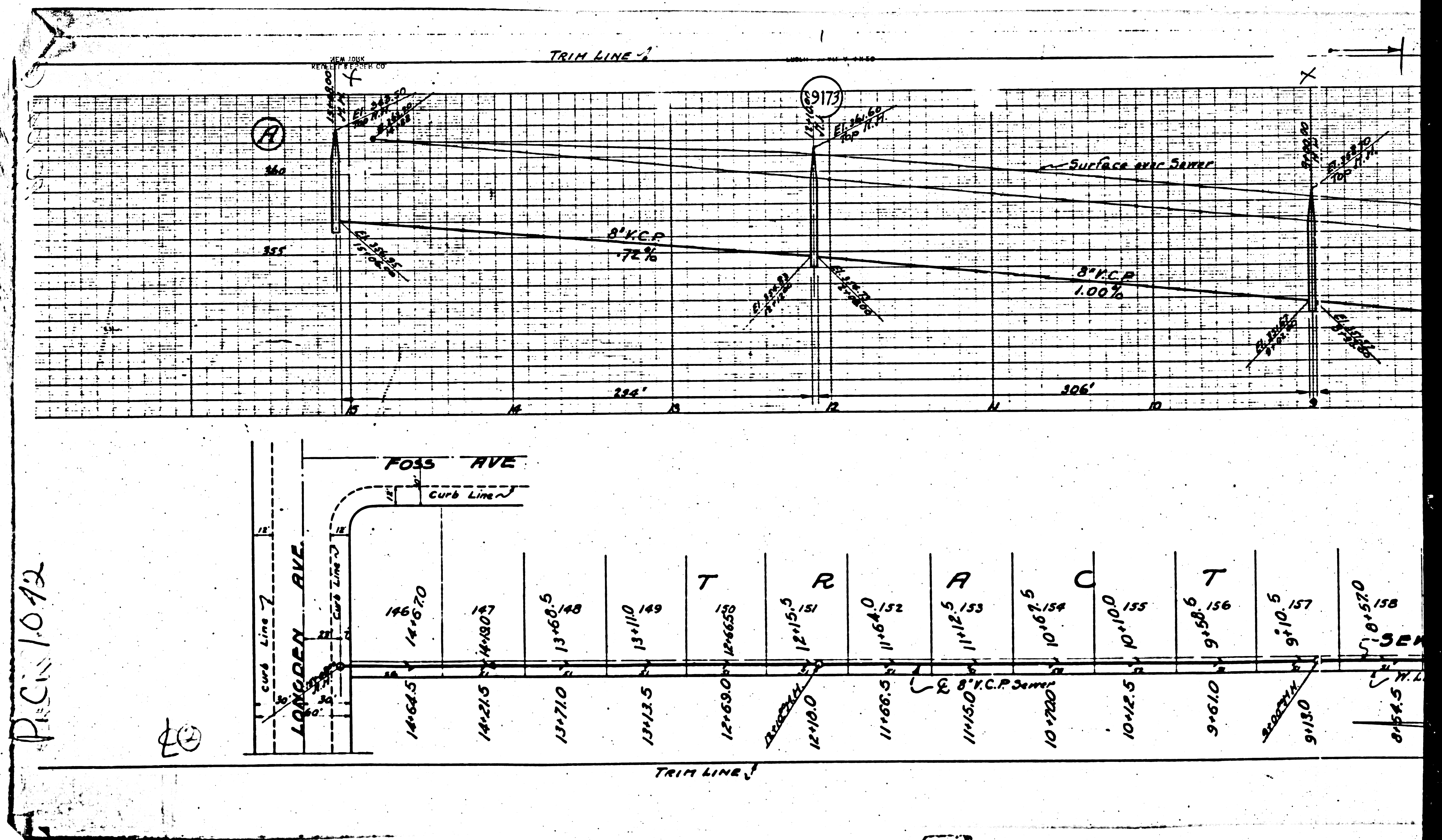
VERT. SCALE 1" = 4'  
 HORIZ. SCALE 1" = 40'  
 PREPARED BY W.A. TREADWELL, JR.  
 CIVIL ENGINEER  
 1110 S. GARDEN ST.  
 LOS ANGELES, CALIF. 90006  
 FEB. 1949  
 FOR CONSTRUCTION NOTES, SEE SHEET 1

B.M. 107-A L&T on South Curb 1' West  
 of B.C.R. S.W. corner LIVE OAK  
 AVE. and NINTH AVE.  
 Elev. 347.8775 P.B.L.-Q-678



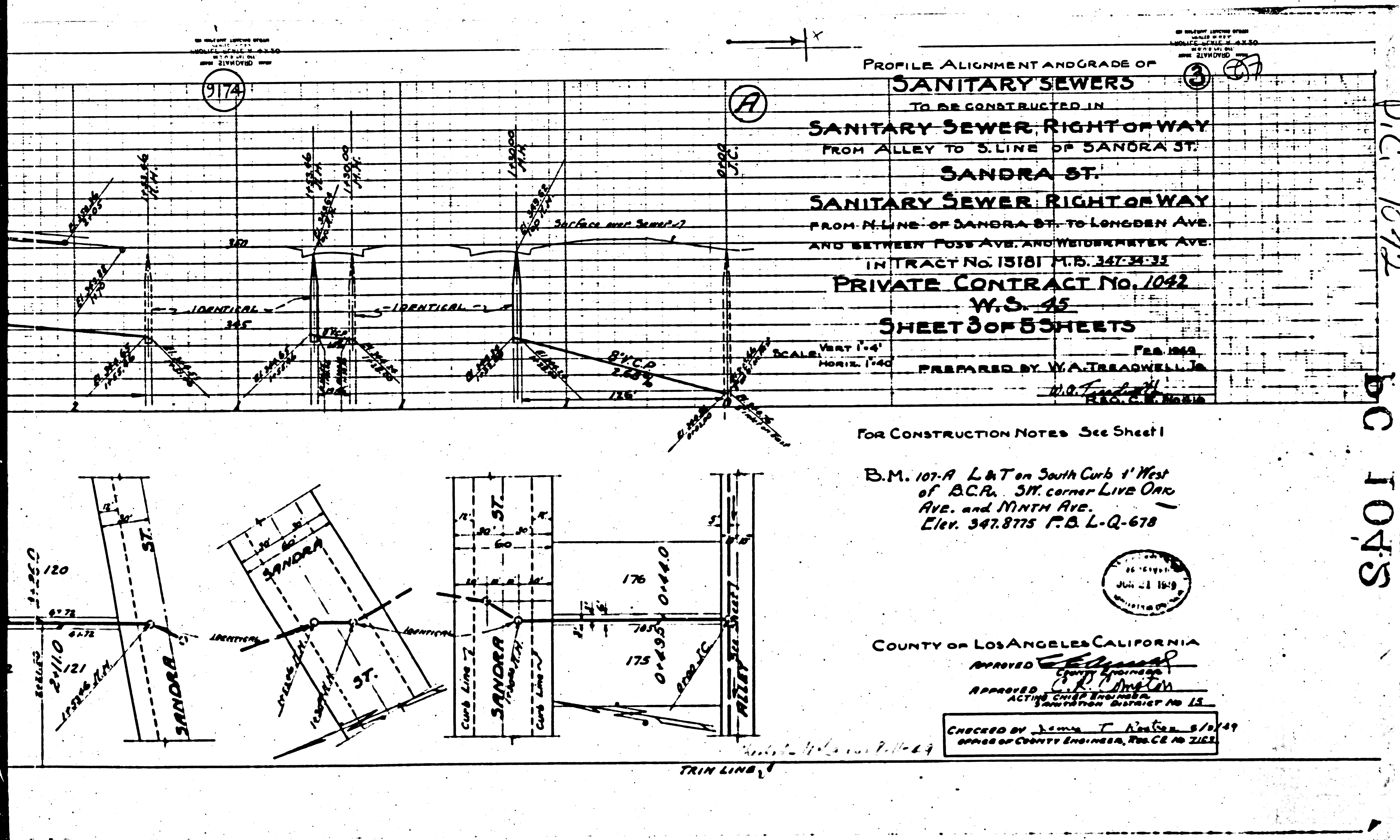
COUNTY OF LOS ANGELES, CALIFORNIA  
 APPROVED: [Signature]  
 COUNTY ENGINEER  
 APPROVED: [Signature]  
 ACTING SANITATION DISTRICT NO. 15  
 CHECKED BY: [Signature]  
 OFFICE OF COUNTY ENGINEER, Rm. CE No. 200





P.C. 10.42

20

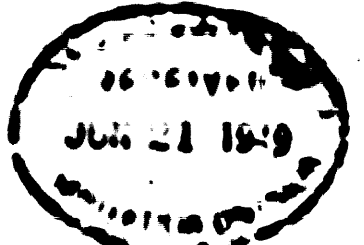


PROFILE ALIGNMENT AND GRADE OF  
**SANITARY SEWERS**  
 TO BE CONSTRUCTED IN  
**SANITARY SEWER RIGHT OF WAY**  
 FROM ALLEY TO S. LINE OF SANDRA ST.  
**SANDRA ST.**  
**SANITARY SEWER RIGHT OF WAY**  
 FROM N. LINE OF SANDRA ST. TO LONGDEN AVE.  
 AND BETWEEN POSS AVE. AND WEIDENMEYER AVE.  
 IN TRACT No. 13181 P.B. 347-34-33  
**PRIVATE CONTRACT No. 1042**  
**W.S. 45**  
**SHEET 3 OF 5 SHEETS**

SCALE: VERT. 1"=4'  
 HORIZ. 1"=40'  
 PREPARED BY W.A. TREAGNELL, JR.  
 REG. C.E. NO. 1018

FOR CONSTRUCTION NOTES See Sheet 1

B.M. 107-A L & T on South Curb 4' West  
 of B.C.R. 311' corner LIVE OAK  
 AVE. and MINTN AVE.  
 Elev. 547.8775 P.B. L-Q-678



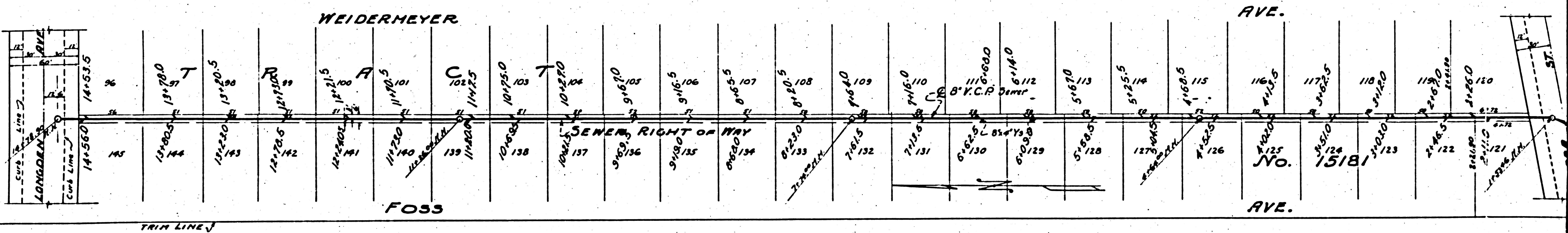
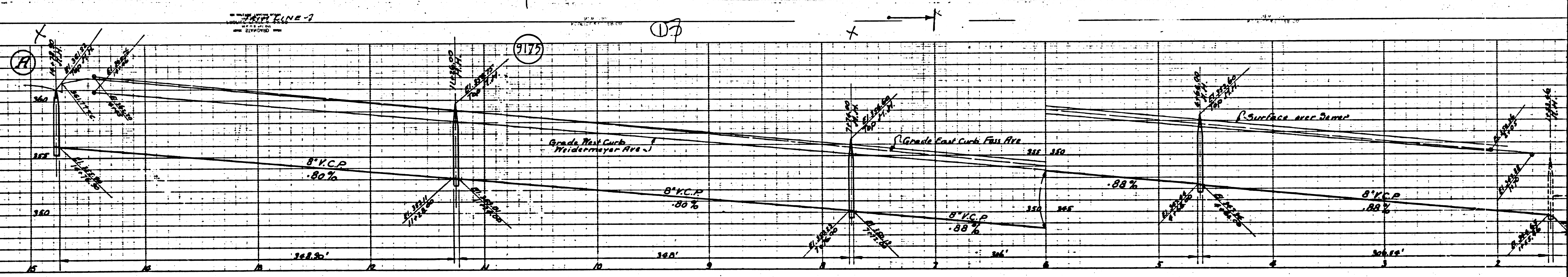
COUNTY OF LOS ANGELES CALIFORNIA  
 APPROVED: [Signature]  
 APPROVED: [Signature]  
 ACTING CHIEF ENGINEER  
 DISTRICT NO. 15

CHECKED BY James T. [Signature] 8/10/49  
 OFFICE OF COUNTY ENGINEER, TRUCE NO. 2153

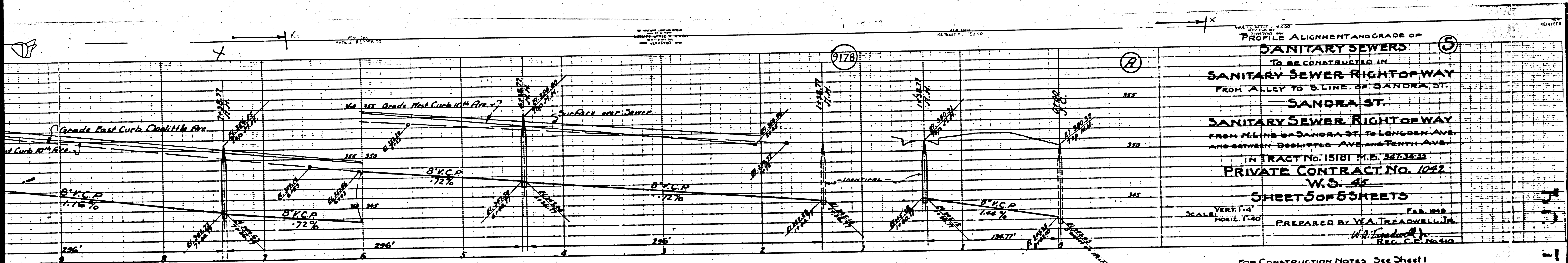
D.C. 1045  
 BC 1045



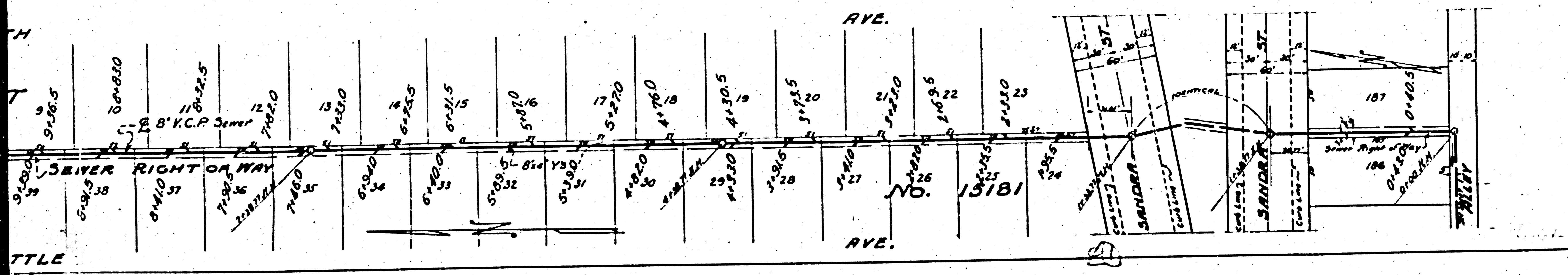
below







PROFILE ALIGNMENT AND GRADE OF  
**SANITARY SEWERS**  
 TO BE CONSTRUCTED IN  
**SANITARY SEWER RIGHT OF WAY**  
 FROM ALLEY TO S. LINE OF SANDRA ST.  
**SANDRA ST.**  
**SANITARY SEWER RIGHT OF WAY**  
 FROM N. LINE OF SANDRA ST. TO LONGDEN AVE  
 AND BETWEEN DOOLITTLE AVE AND TENTH AVE  
 IN TRACT NO. 15181 M.B. 347,383  
**PRIVATE CONTRACT NO. 1042**  
**W.S. 45**  
**SHEET 5 OF 53 SHEETS**  
 SCALE: VERT. 1"=4'  
 HORIZ. 1"=40'  
 FEB. 1949  
 PREPARED BY W.A. TREADWELL JR.  
 W.A. Treadwell  
 REG. C.E. NO. 610



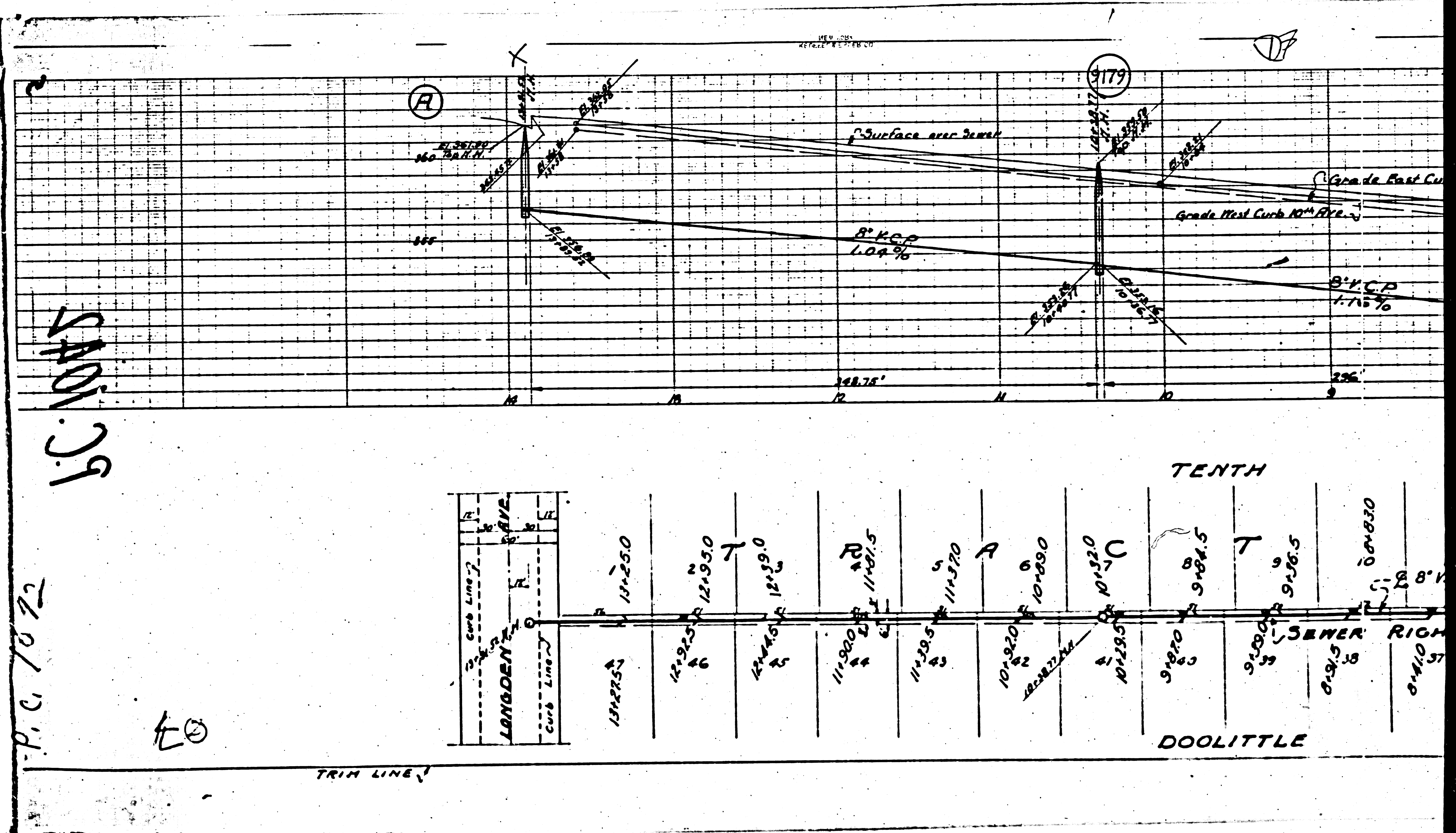
FOR CONSTRUCTION NOTES See Sheet 1  
 B.M. 107-A L & T on South Curb 1' West  
 of B.C.R. SW corner LIVE OAK  
 AVE. and NINTH AVE.  
 Elev. 347.8775 F.B.L.-Q. 678



COUNTY OF LOS ANGELES CALIFORNIA  
 APPROVED [Signature]  
 APPROVED [Signature]  
 COUNTY ENGINEER SANITATION DISTRICT NO. 12  
 CHECKED BY James T. Anderson 6/9 49  
 OFFICE OF COUNTY ENGINEER, DISTRICT NO. 12

TUS  
 15181





b.c. 1072

P.C. 1072

EO

TRIM LINE

Station	Elevation	Notes
11475.0	11475.0	
11475.5	11475.5	
11476.0	11476.0	
11476.5	11476.5	
11477.0	11477.0	
11477.5	11477.5	
11478.0	11478.0	
11478.5	11478.5	
11479.0	11479.0	
11479.5	11479.5	
11480.0	11480.0	
11480.5	11480.5	
11481.0	11481.0	
11481.5	11481.5	
11482.0	11482.0	
11482.5	11482.5	
11483.0	11483.0	
11483.5	11483.5	
11484.0	11484.0	
11484.5	11484.5	
11485.0	11485.0	
11485.5	11485.5	
11486.0	11486.0	
11486.5	11486.5	
11487.0	11487.0	
11487.5	11487.5	
11488.0	11488.0	
11488.5	11488.5	
11489.0	11489.0	
11489.5	11489.5	
11490.0	11490.0	
11490.5	11490.5	
11491.0	11491.0	
11491.5	11491.5	
11492.0	11492.0	
11492.5	11492.5	
11493.0	11493.0	
11493.5	11493.5	
11494.0	11494.0	
11494.5	11494.5	
11495.0	11495.0	
11495.5	11495.5	
11496.0	11496.0	
11496.5	11496.5	
11497.0	11497.0	
11497.5	11497.5	
11498.0	11498.0	
11498.5	11498.5	
11499.0	11499.0	
11499.5	11499.5	
11500.0	11500.0	