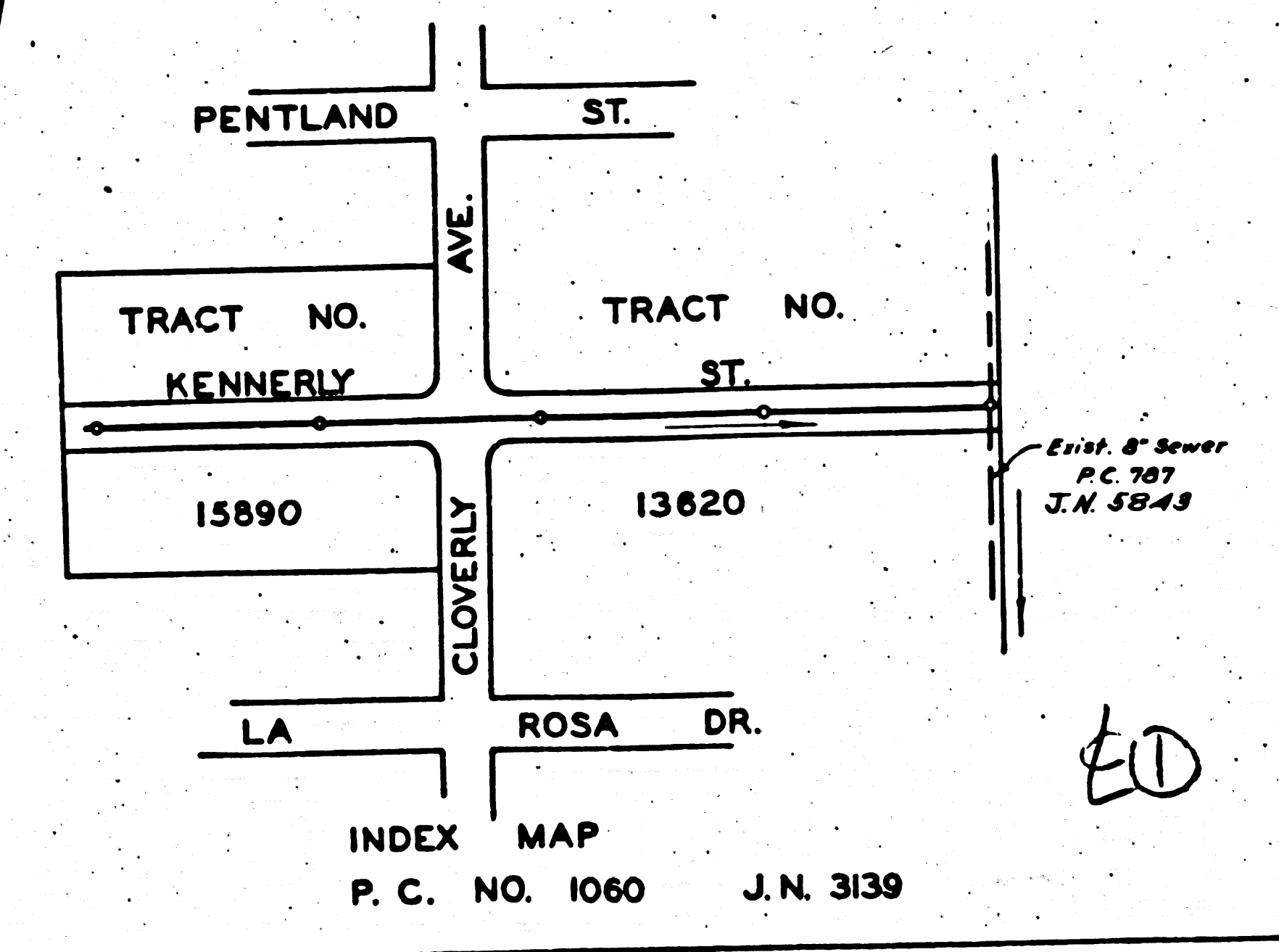
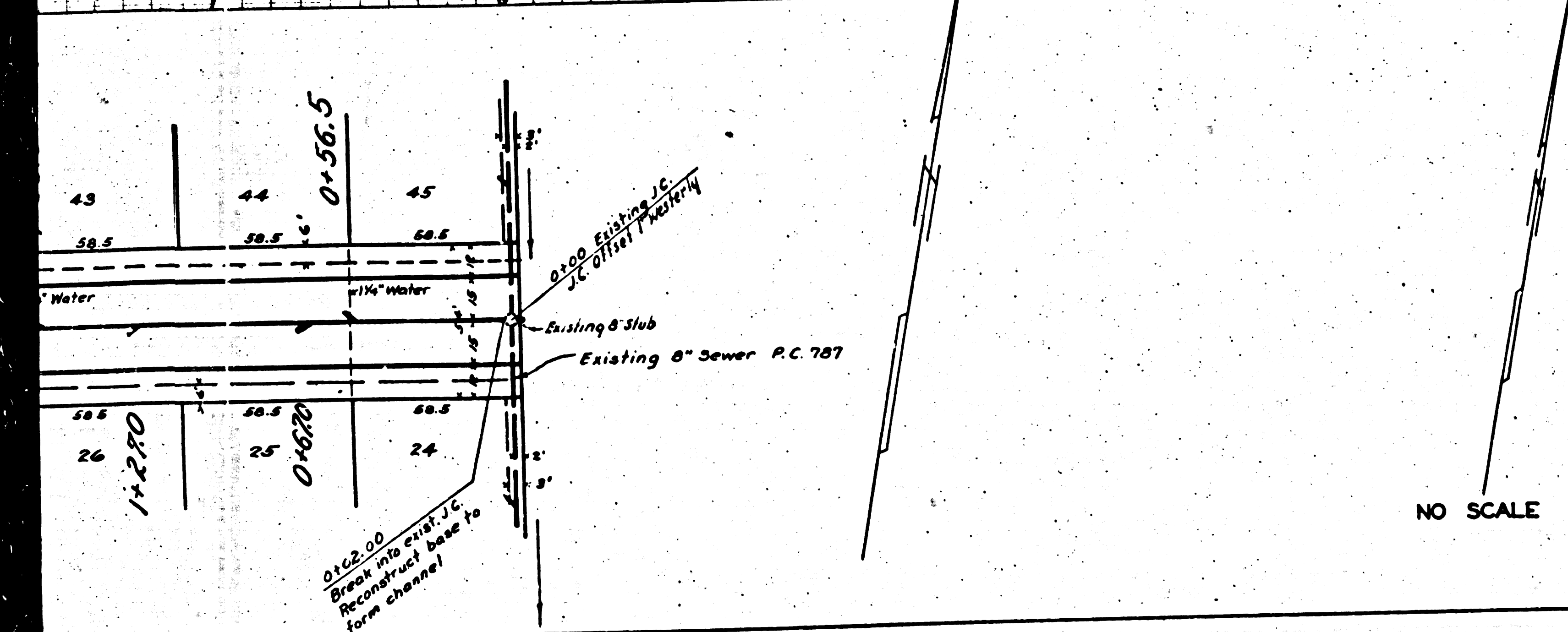


**PROFILE ALIGNMENT AND GRADE OF
 SANITARY SEWER
 TO BE CONSTRUCTED IN
 KENNERLY STREET
 FROM 676' EASTERLY OF CLOVERLY AVE.
 TO 400' WESTERLY OF CLOVERLY AVE.
 IN TRACT NO. 15890 AND 13620
 PRIVATE CONTRACT NO. 1060
 W. S. 44
 SHEET 1 OF 1 SHEET**



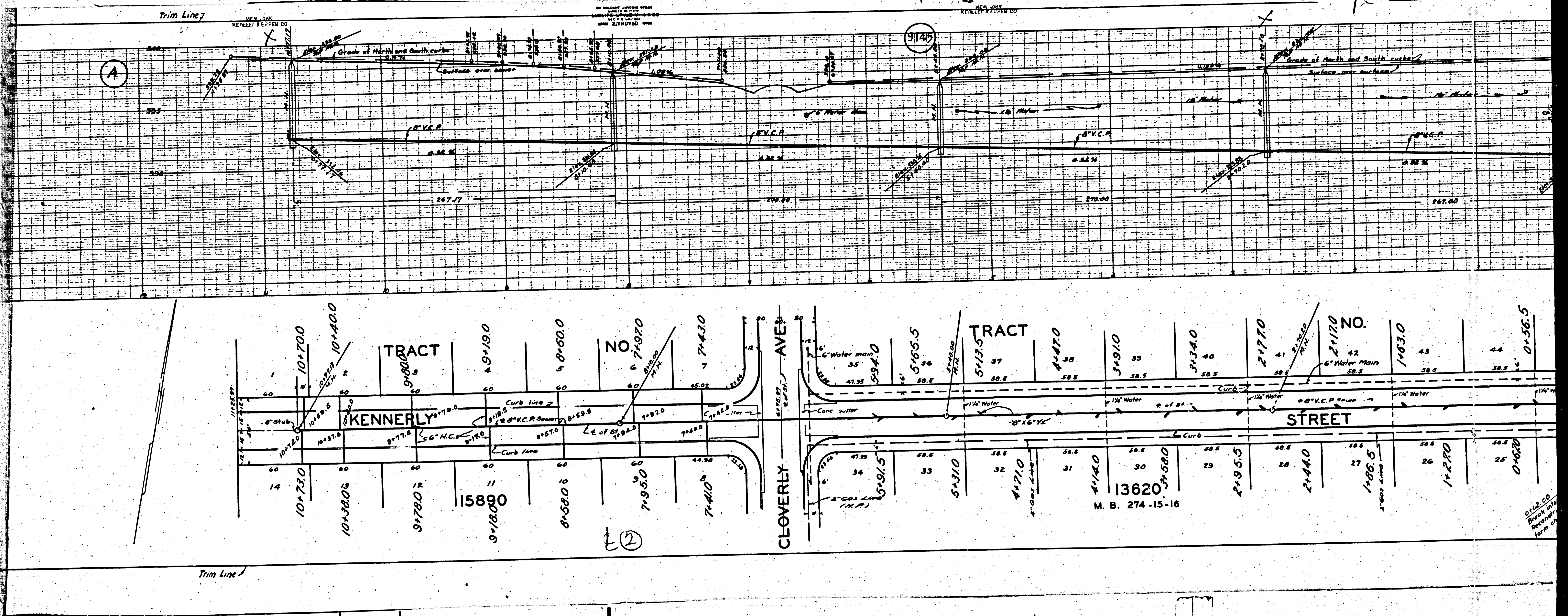
- Note:
- The grades to which this improvement is to be constructed are shown on plane and profiles.
 - Grade points for top of curb, center line of street, or centerline of alley are shown by circles on profiles. At all points between designated points the grade shall be established so as to conform to a straight line drawn between said designated points.
 - This drawing and the data hereon are hereby made a part of the specifications.
 - Work shall be constructed according to specifications on file in the office of the County Engineer.
 - Before work can be started the contractor must obtain a permit to excavate in County Streets from the L. A. County Road Dept. by J. M. and make a deposit with the County Engineer, 828 La Co. Eng. Bldg. sufficient to cover the cost of construction inspection and record plans.
 - Elevations are in feet above U.S.G.S. datum or mean sea level.

Prepared by Leon W. Moore
 R.E. 3157
 COUNTY OF LOS ANGELES
 Approved [Signature]
 County Engineer
 Approved [Signature]
 Chief Engineer of Co. Sanitation Dist. No. 15
 Checked by [Signature]
 Office of the County Engineer
 R.E. No. 7103
 Date 6/27/29

ED
 Richard W. Moore - 8-9-29

INDEX MAP
 P. C. NO. 1060 J. N. 3139

Trim Line



(A)

(B)

(2)

City of
Brewster
Revised
Form 20