

1. USE STANDARD MANHOLE FRAME AND COVER 3'-x-17"
2. USE STANDARD STRENGTH PIPE, EXCEPT AS NOTED
3. USE CEMENT MORTAR FOR VITRIFIED CLAY PIPE JOINTS
4. RESURFACE ALL TRENCH WITHIN PAVED AREA TO MEET LOS ANGELES COUNTY ROAD DEPARTMENT REQUIREMENTS
5. CONSTRUCT HOUSE CONNECTIONS WITH INVERT AT PROPERTY LINE STREET BELOW GRADE OF CENTER LINE OF ALLEY
6. ENCASE FOUR FEET OF SPREAD AT POINTS OF INTERFERENCE WITH POLES 3'-x-10"
7. ALL STRUCTURES SHALL BE BRICK SAUER STRUCTURES 3'-x-10", EXCEPT AS NOTED.
8. CONSTRUCT TOPS OF ALL STRUCTURES IN RIGHTS OF WAY 6" ABOVE FINISHED GRADE

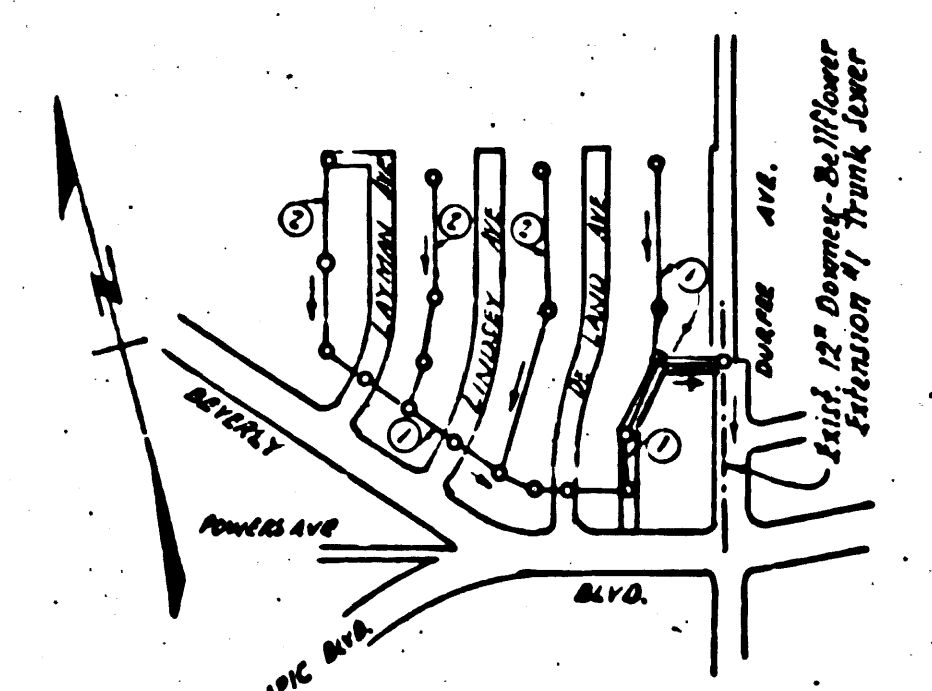
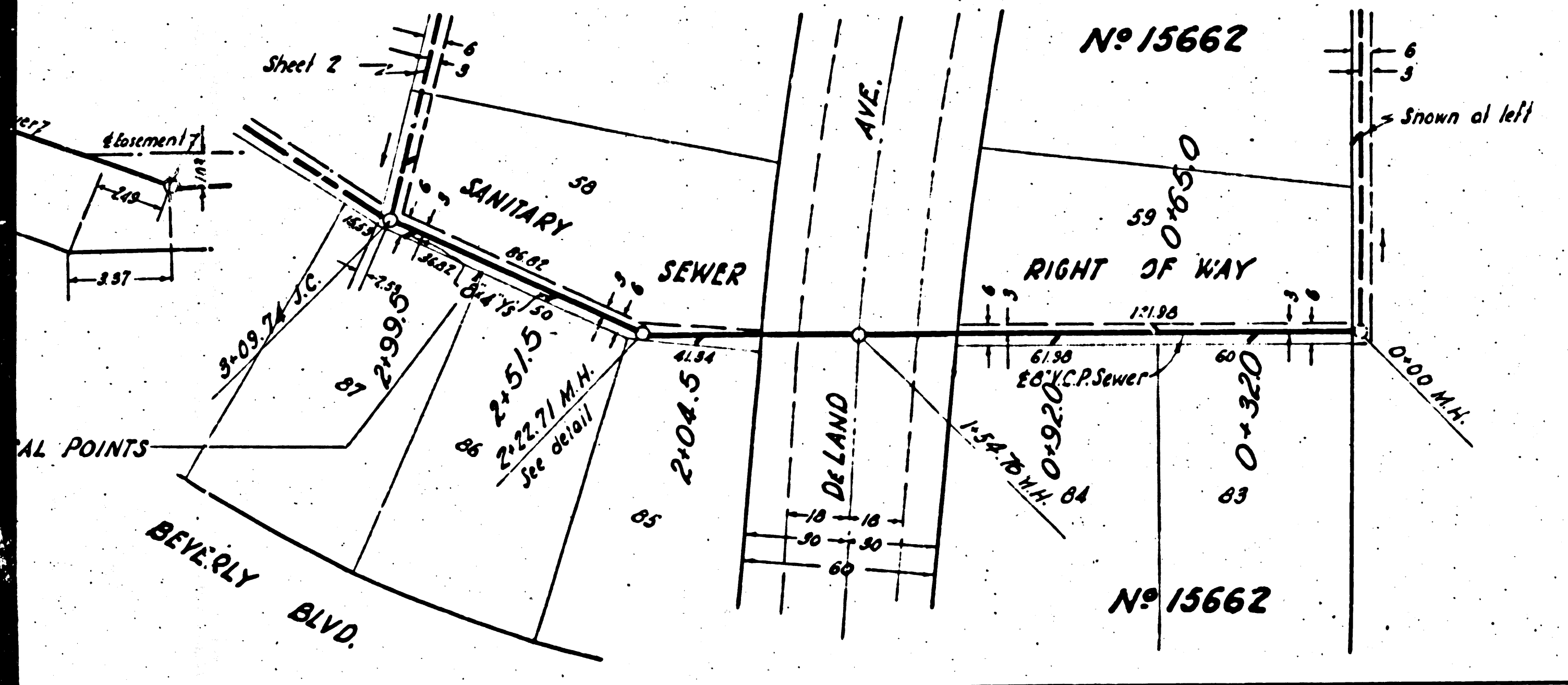
Note:
No representative of the County Engineer will survey or lay out any portion of the work. The contractor shall employ a representative to locate the County Engineer's utility lines and stations of all lines shown on the plan and shall provide stakes for them at their proper locations with the necessary plainly covered. Any change of location shall be reported in writing by the contractor to his representative. No revisions shall be made in these plans without approval of the County Engineer.

9091-A PROFILE ALIGNMENT AND GRADE OF
SANITARY SEWERS
TO BE CONSTRUCTED IN
SANITARY SEWER RIGHTS OF WAY
IN TRACT NO. 15662

PRIVATE CONTRACT NO. 1067
W.S. 37
MARCH 1949

SHEET 1 OF 2 SHEETS
PREPARED IN THE OFFICE OF
LEONARD H. GOWDY
BY *Leonard H. Gowdy*
REG. C.E. NO. 6675

SCALE VERT. 1" = 4'
HORIZ. 1" = 40'

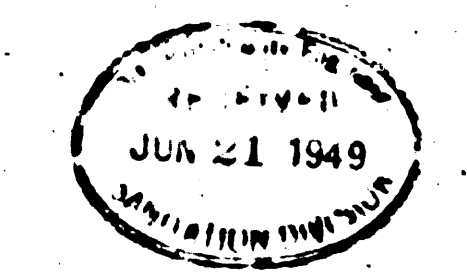


NOTE:
GRADES TO WHICH THIS IMPROVEMENT IS TO BE CONSTRUCTED ARE SHOWN ON PLANS AND PROFILES. GRADE POINTS FOR REFORCED CENTER LINE OF STREET OR CENTER LINE OF ALLEY ARE SHOWN BY CIRCLES ON PROFILE. STAKE POINTS BETWEEN DESIGNATED POINTS SHALL BE ESTABLISHED SO AS TO CONFORM TO A STRAIGHT LINE DRAWN BETWEEN SAID DESIGNATED POINTS.
ELEVATIONS ARE IN FEET ABOVE U.S. DATUM OR MEAN SEA LEVEL.
THIS DRAWING AND THE DATA HEREON ARE HEREBY MADE A PART OF THE SPECIFICATIONS.
WORK SHALL BE CONSTRUCTED ACCORDING TO SPECIFICATIONS ON FILE IN THE OFFICE OF THE COUNTY ENGINEER AND SHALL BE PROSECUTED ONLY IN THE PRESENCE OF THE COUNTY ENGINEER.
BEFORE WORK CAN BE STARTED THE CONTRACTOR MUST OBTAIN A PERMIT TO EXCAVATE IN COUNTY STREETS FROM THE L.A. COUNTY ROAD DEPT., 2110 MAIN ST., AND MAKE A DEPOSIT WITH THE COUNTY ENGINEER \$25.00 COUNTY ENG. FUND, SUFFICIENT TO COVER THE COST OF CONSTRUCTION INSPECTION AND RECORD PLANS.

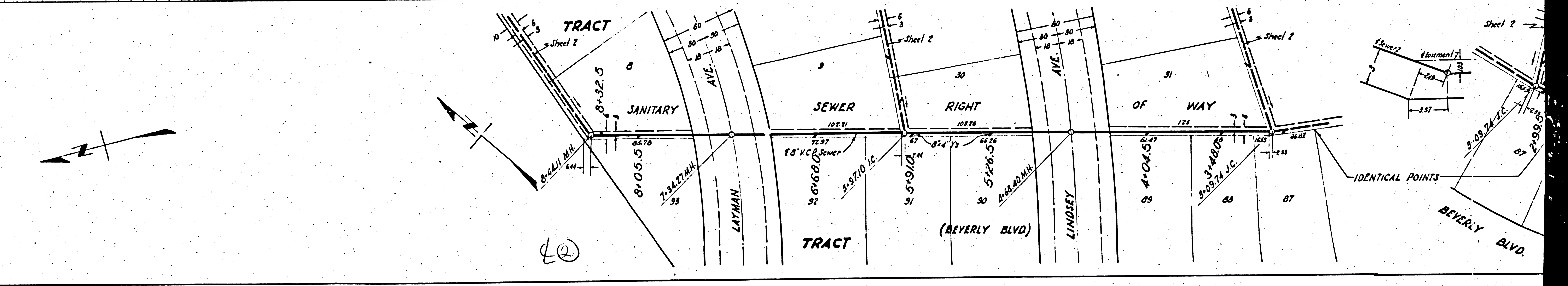
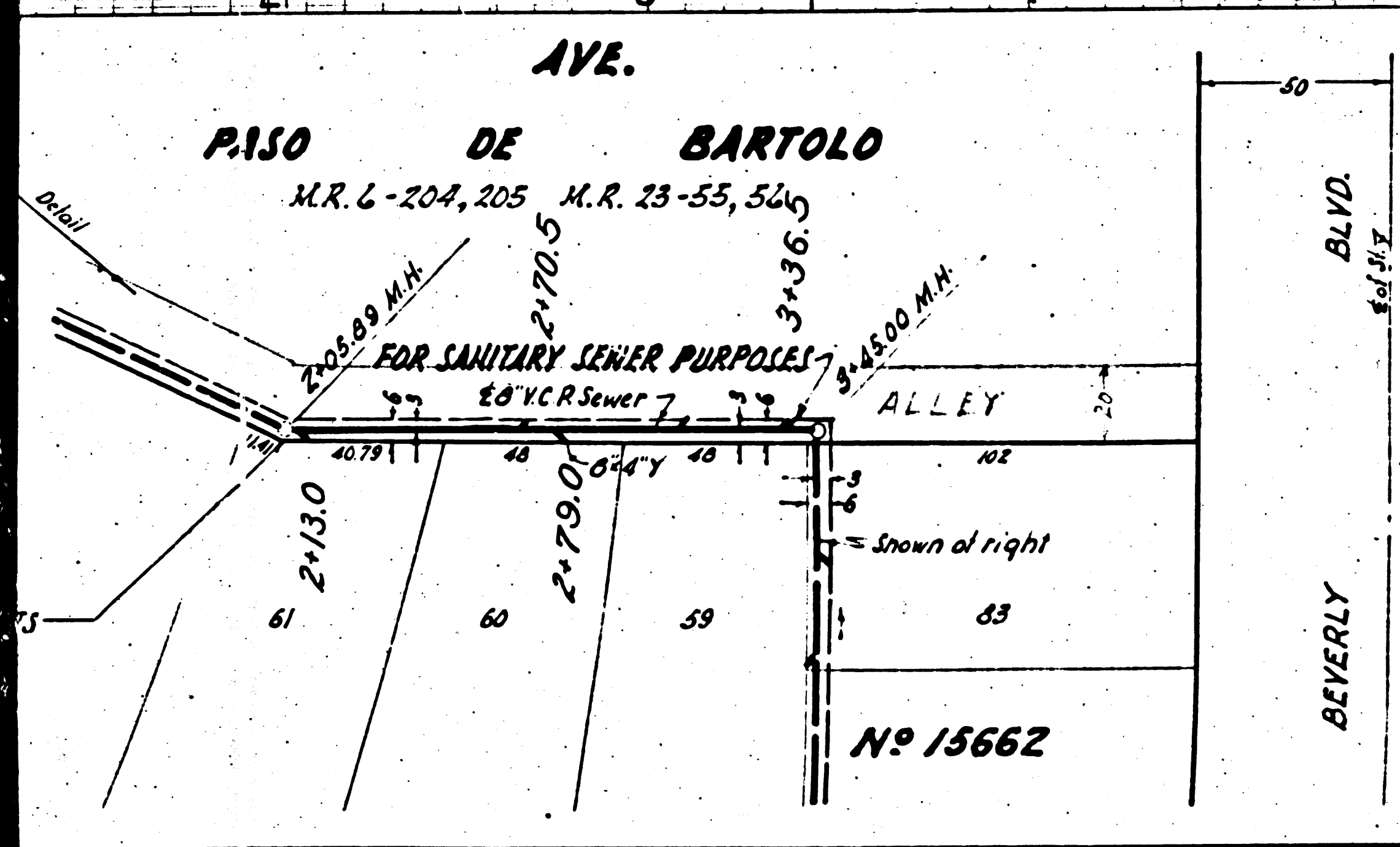
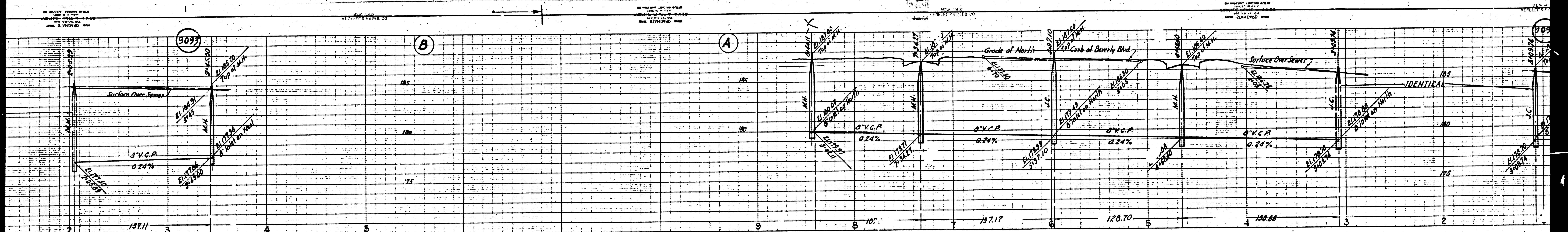
COUNTY OF LOS ANGELES, CALIFORNIA.

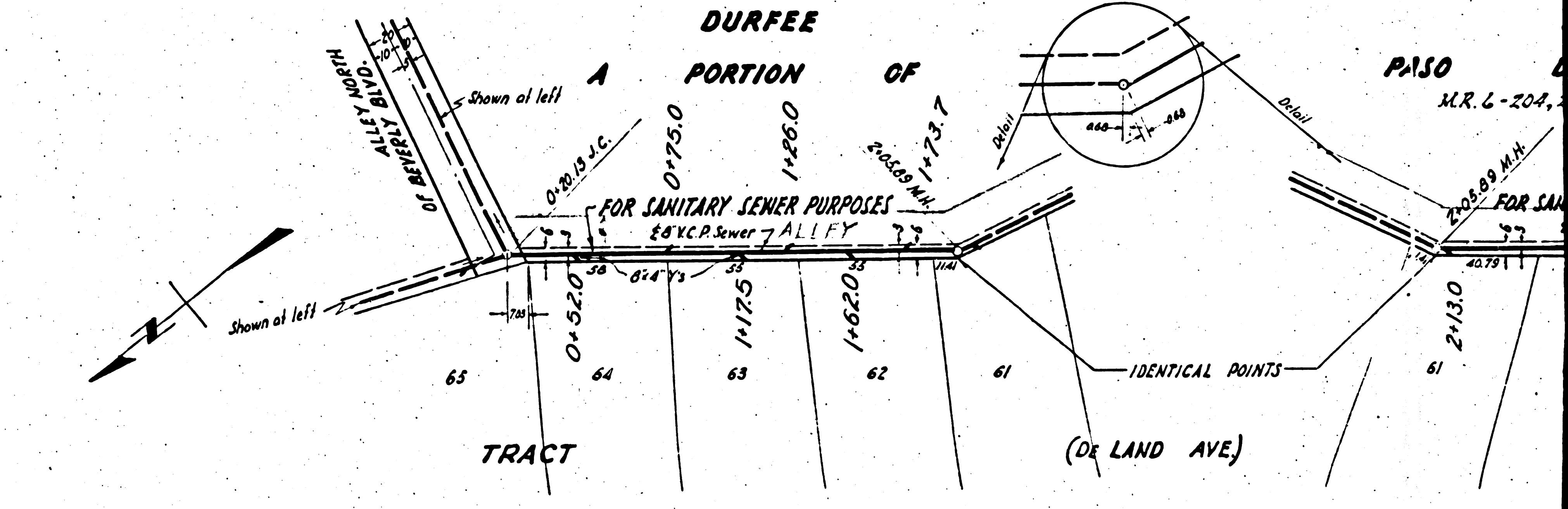
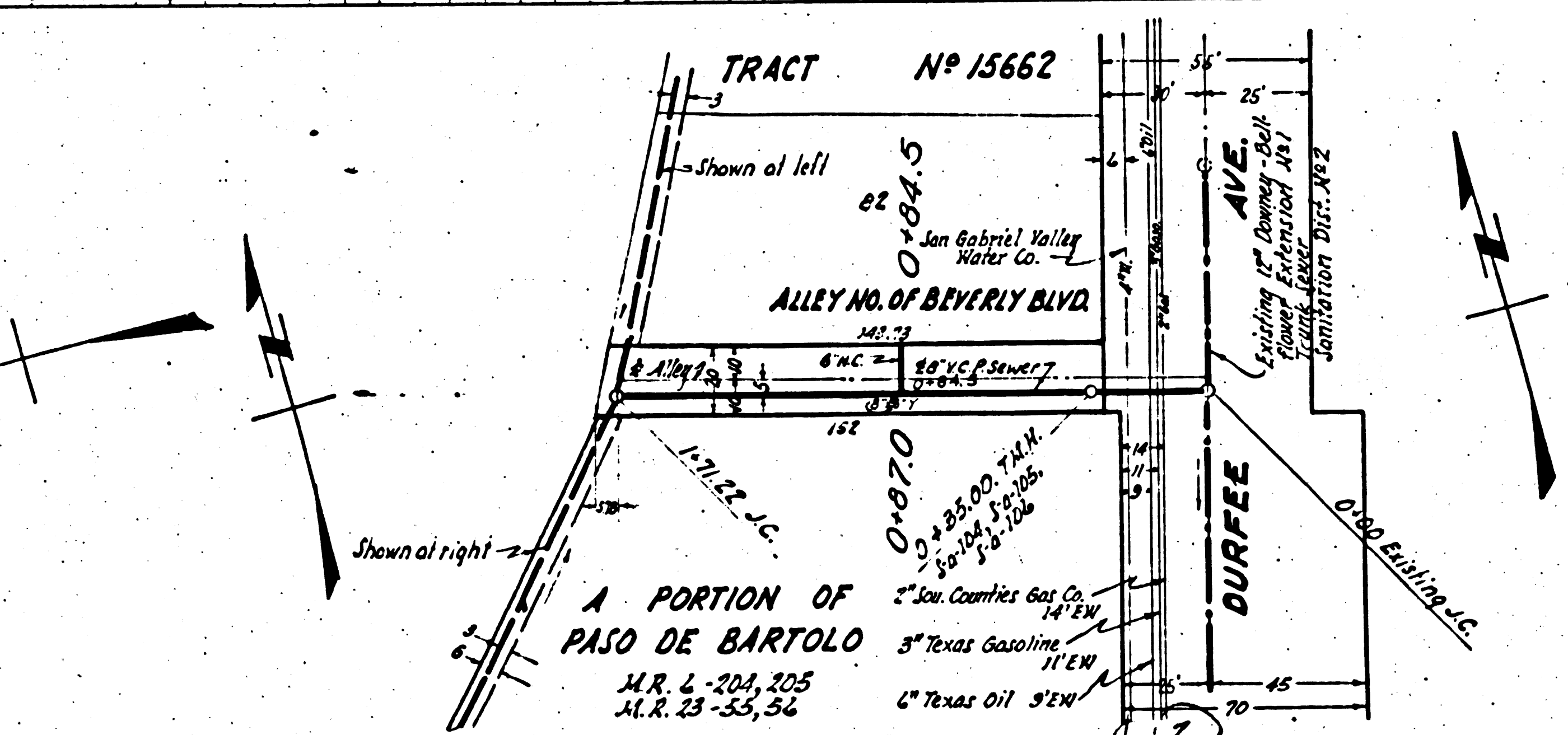
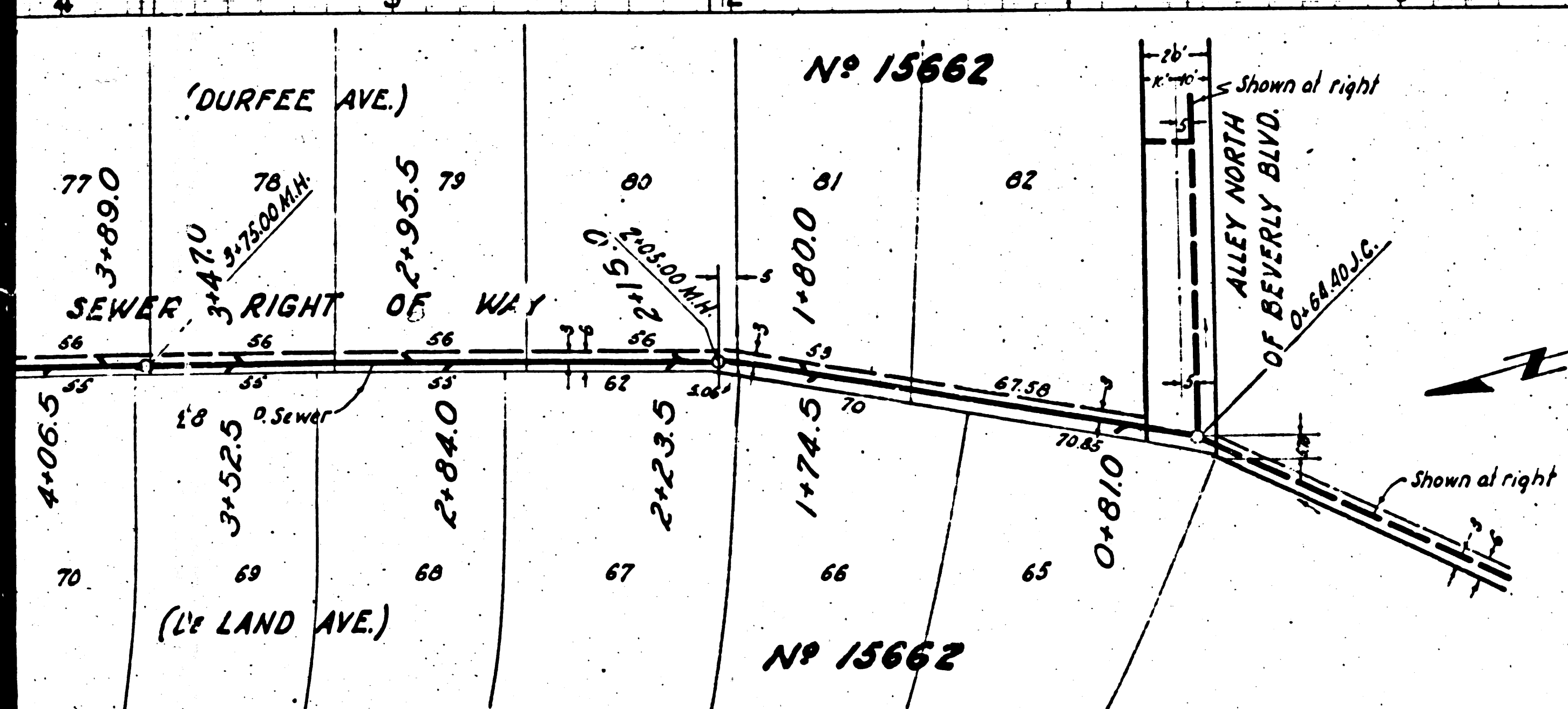
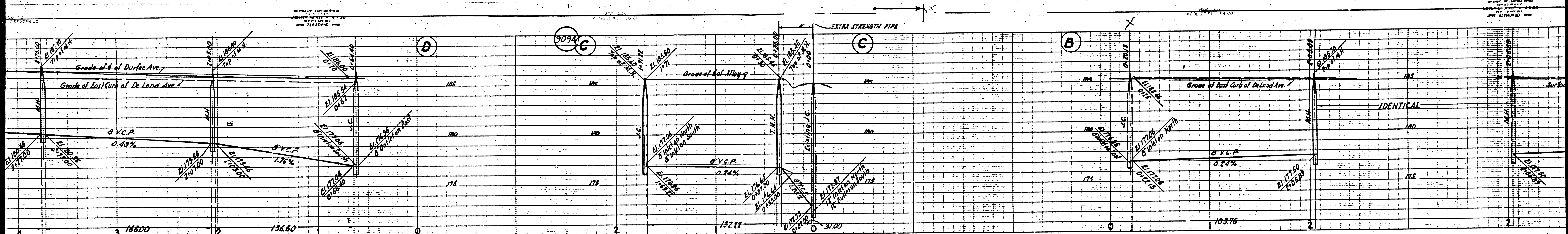
APPROVED: *Leonard H. Gowdy*
COUNTY ENGINEER

APPROVED: _____
CHECKED BY: _____
DATE: 6/13/49
OFFICE OF COUNTY ENGINEER, ROOM 2103



Trim Line





BY ORDER OF THE BOARD OF PUBLIC WORKS
 ENGINEER J. W. BROWN
 DATE 11/10/20

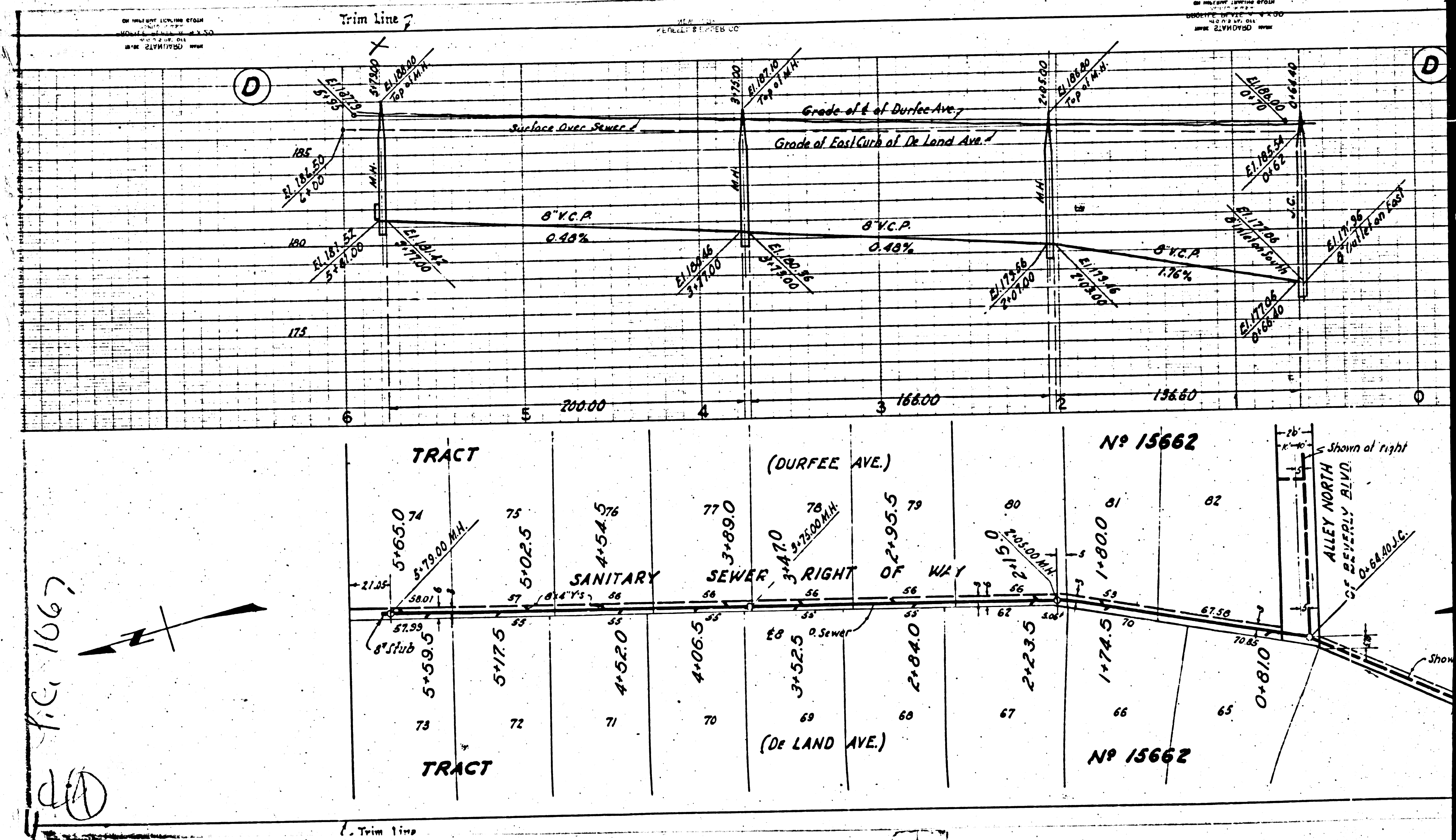
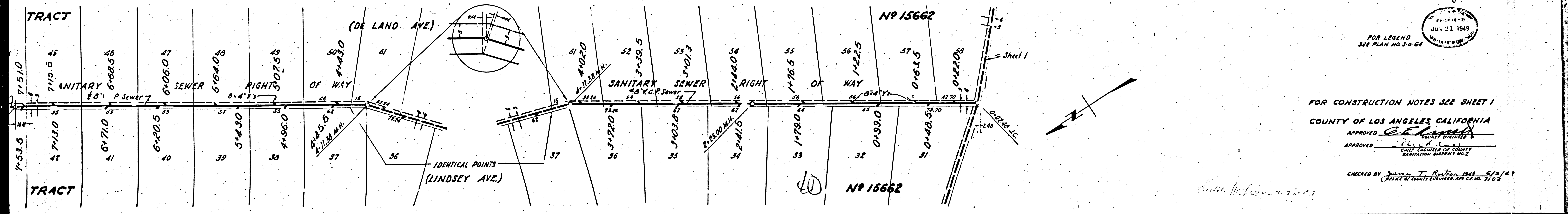
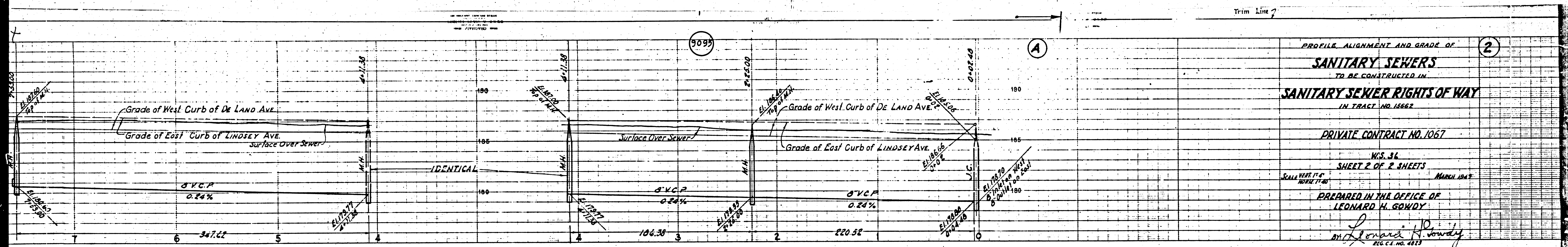
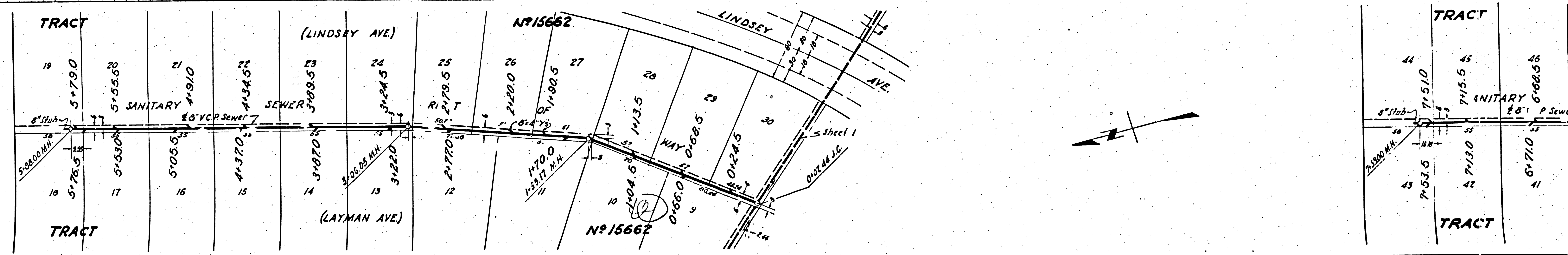
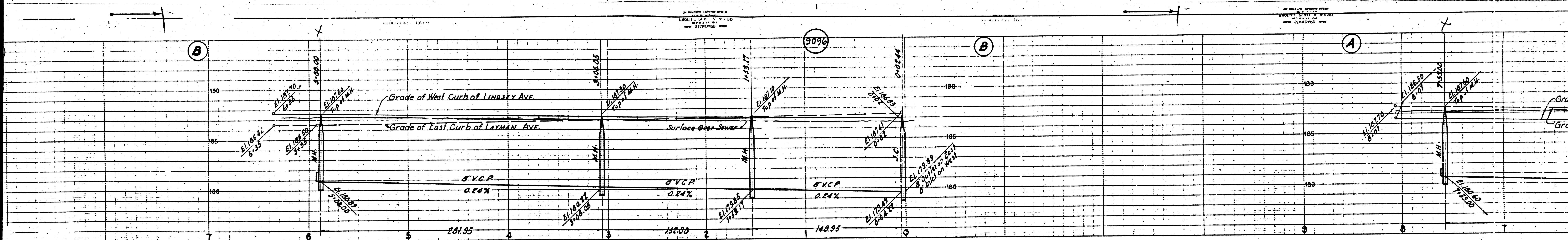


Fig. 1667

(D)





M

M

