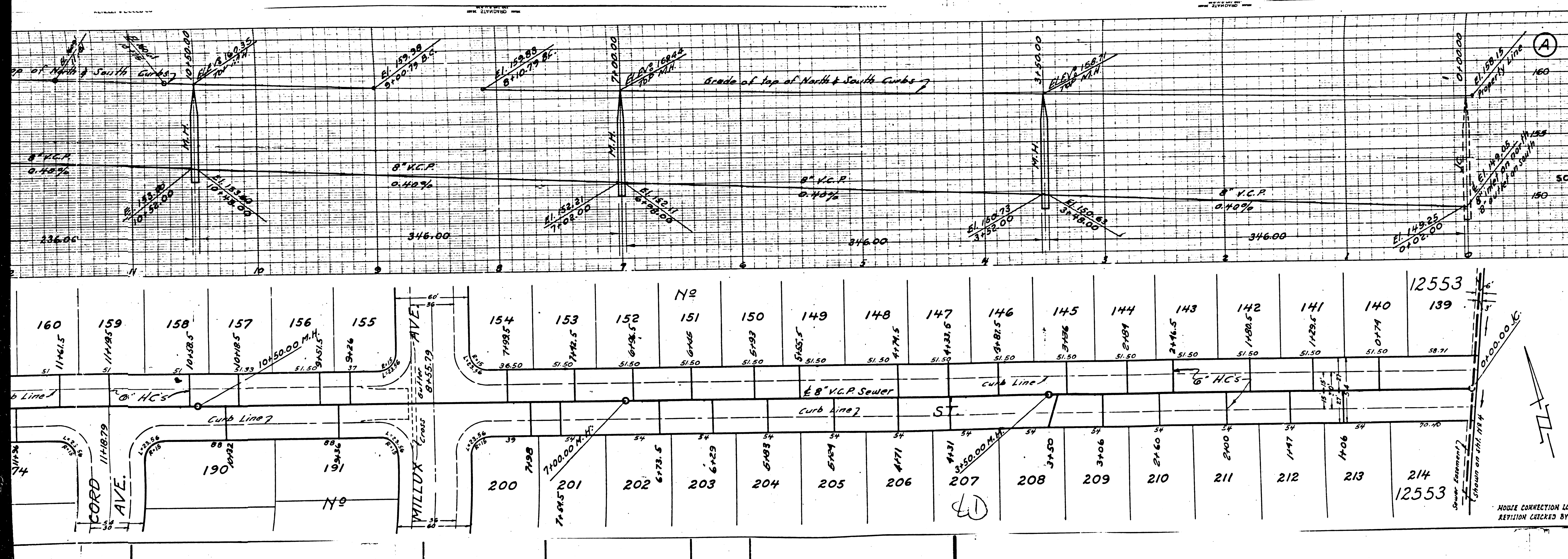


P.C. 1068
 (3)



PROFILE ALIGNMENT AND GRADE OF
SANITARY SEWERS
 TO BE CONSTRUCTED IN
 TRACT NO. 12553
GOODBEE STREET & WAMPLER STREET
 BETWEEN PASSONS BLVD. & PICOVISTA ROAD
 PRIVATE CONTRACT NO. 1068
 SCALES (VERT. 1" = 4'
 HORIZ. 1" = 40') W.S. 36
 SHEET 2 OF 4 SHEETS
 PREPARED IN THE OFFICE OF
KEMMERER ENGR. CO.

BY *John M. Kemmerer*
 REG. C.E. NO. 272

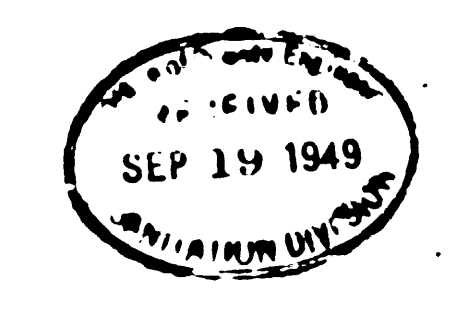
FOR LEGEND & NOTE SEE
 SHEET ONE

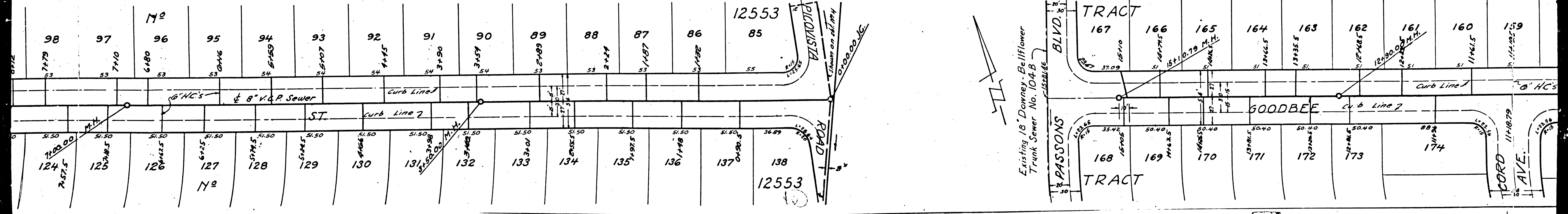
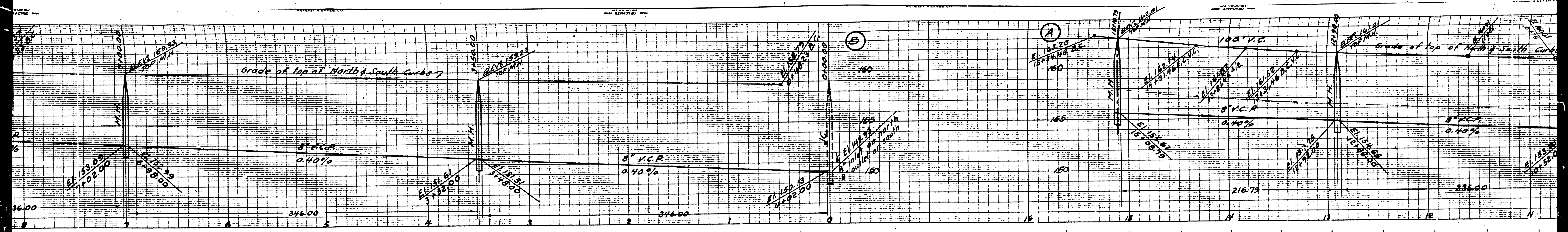
APPROVED *Edmund*
 COUNTY ENGINEER

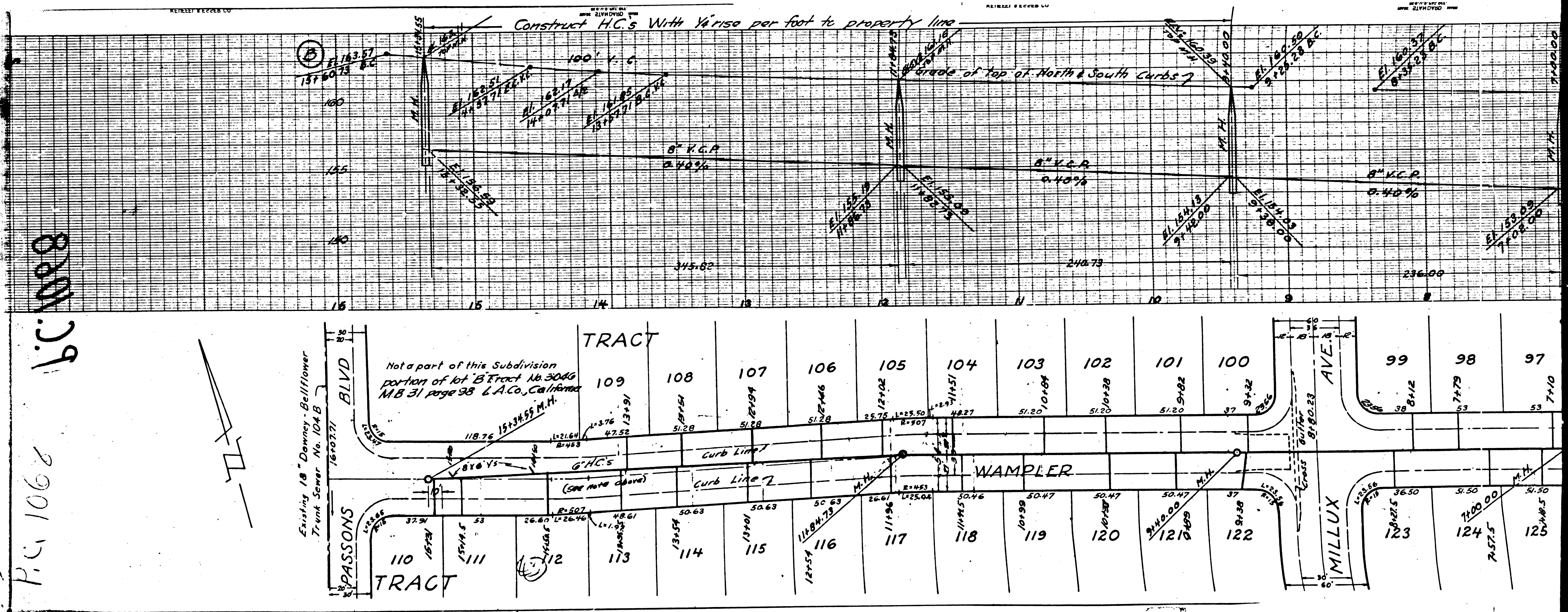
APPROVED *C. R. Crutcher*
 ACTING CHIEF ENGINEER OF COUNTY
 SANITATION DISTRICT NO. 2

CHECKED BY *Samuel T. Roetman* June 20
 OFFICE OF COUNTY ENGINEER REG. C.E.

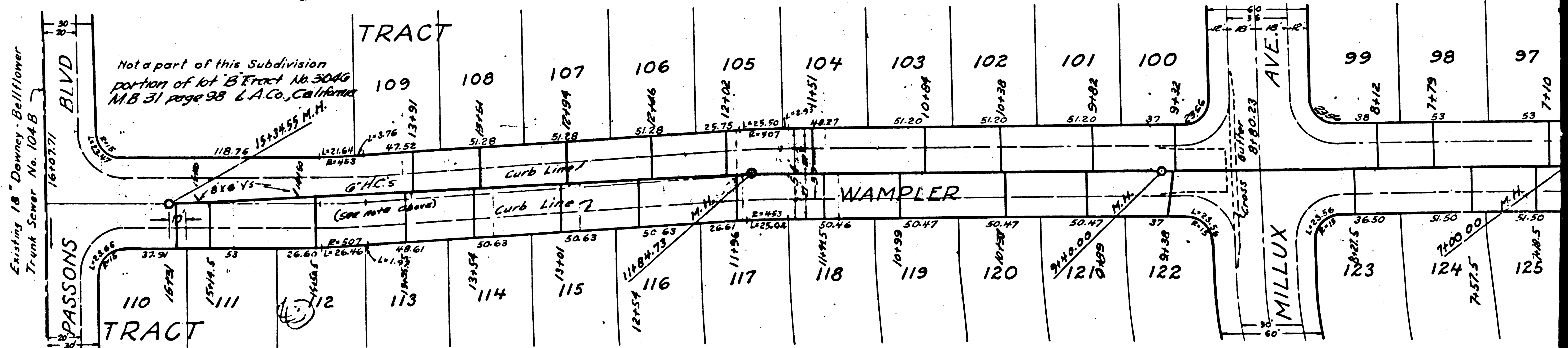
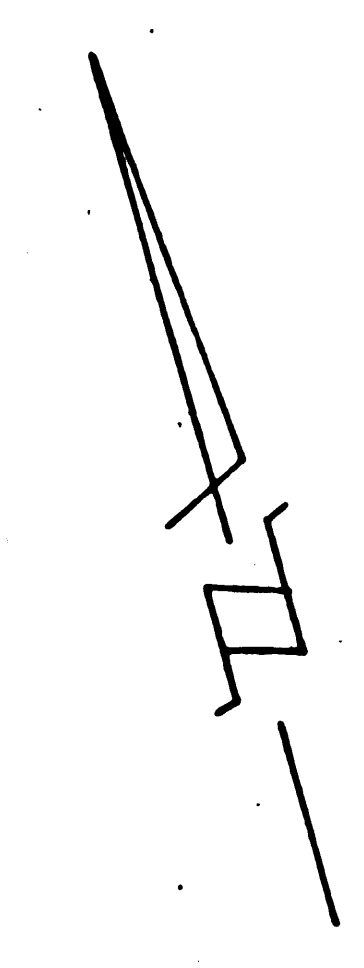
HOUSE CONNECTION LOCATIONS REVISED 8-15-43
 REVISION CHECKED BY *J. D. ...* 8-15-43

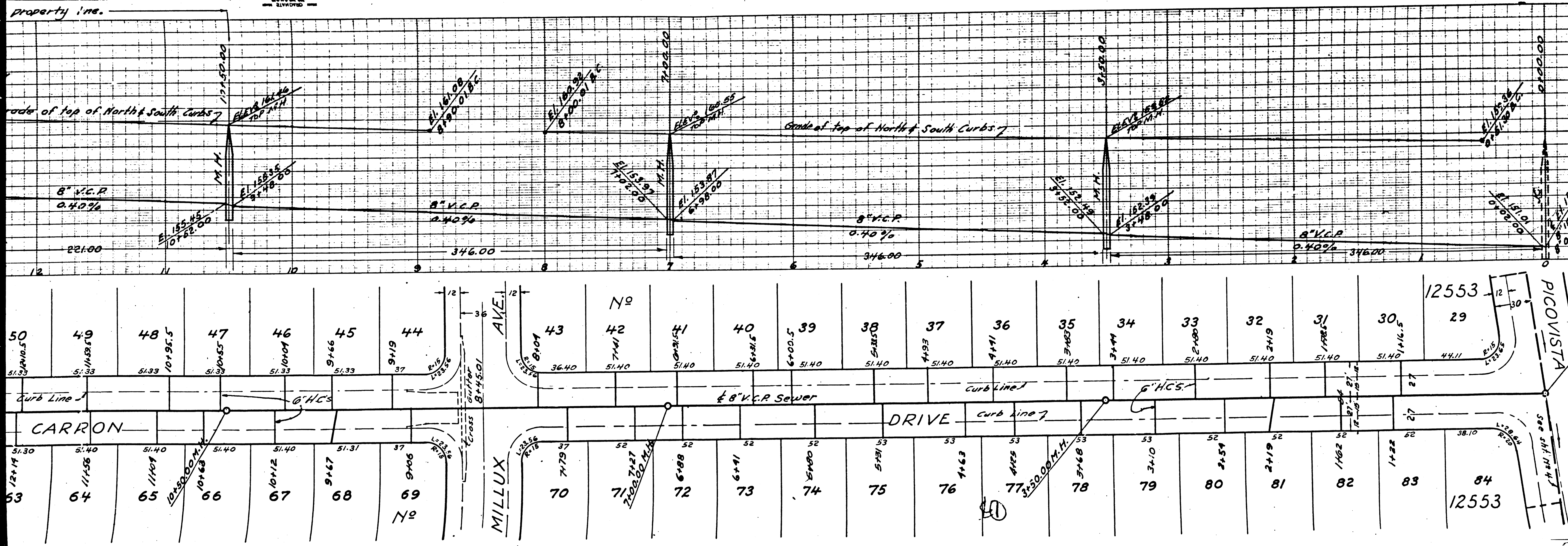






P.C. 106.2
 I.C. 106.9





PROFILE, ALIGNMENT AND GRADE IN
SANITARY SEWERS
 TO BE CONSTRUCTED IN
 TRACT NO. 12553
 CARRON DRIVE & HOMEBROOK S
 BETWEEN PASSONS BLVD. & PICOVISTA ROAD
 PRIVATE CONTRACT NO. 1068
 SCALES: VERT. 1"=4' W.S. 36
 HORIZ. 1"=40'
 SHEET 3 OF 4 SHEETS
 PREPARED IN THE OFFICES OF
KEMMERER ENGR. CO.

BY *John M. Kemmerer*
 REG. C.E. NO. 272

FOR LEGEND & NOTE SEE
 SHEET ONE.

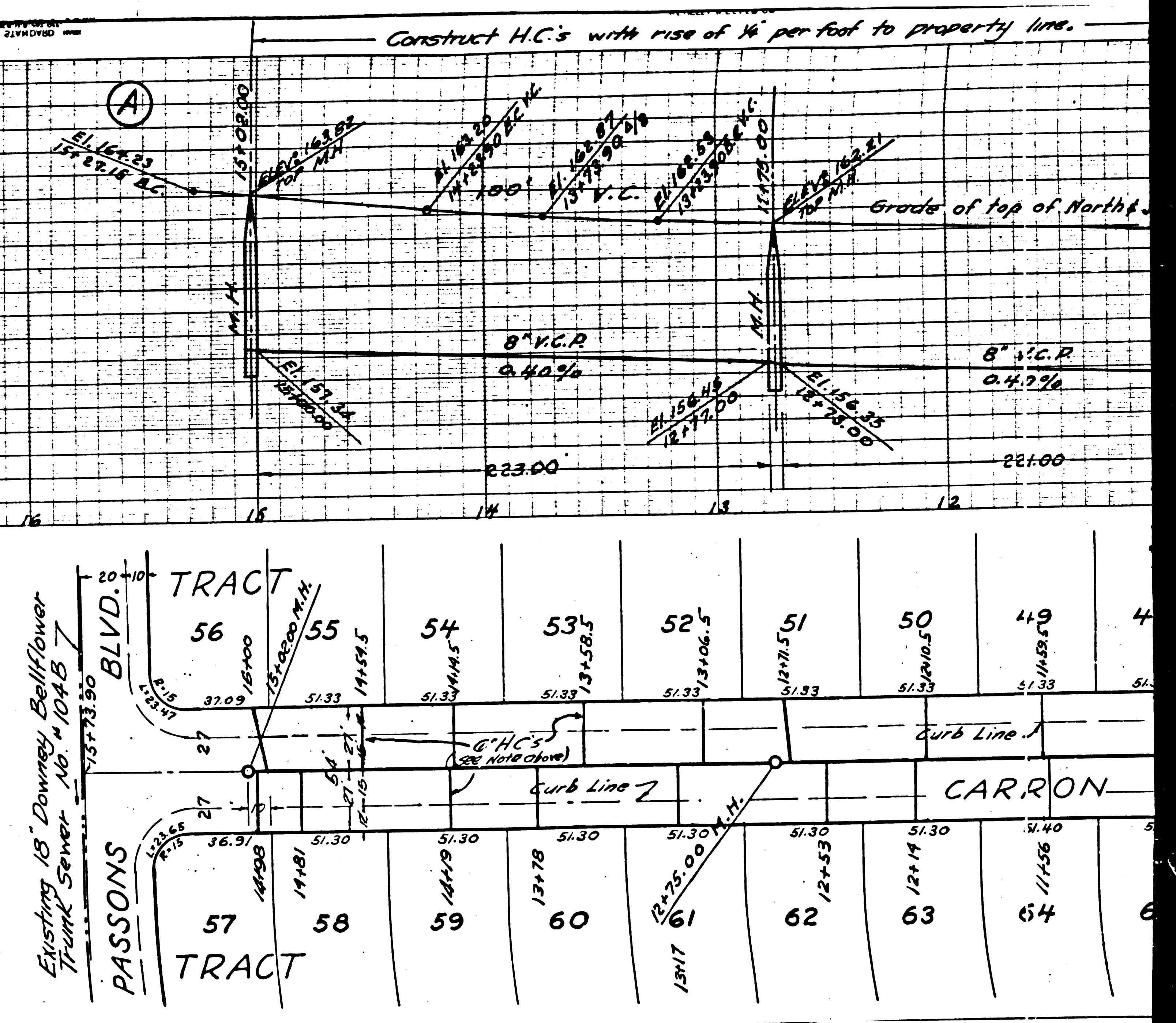
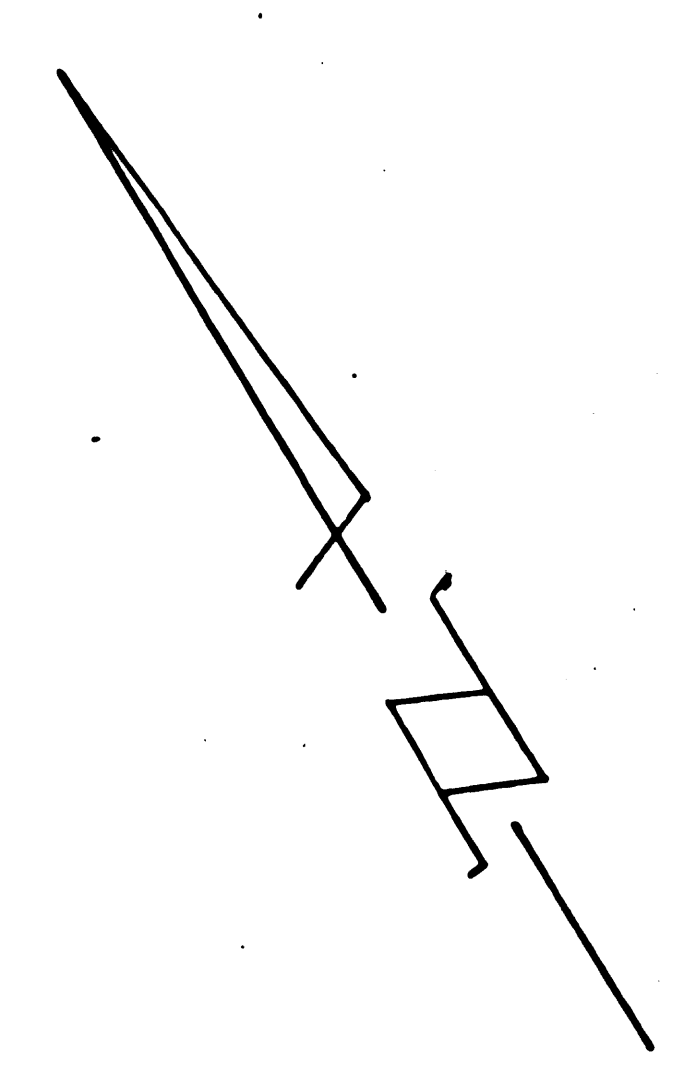
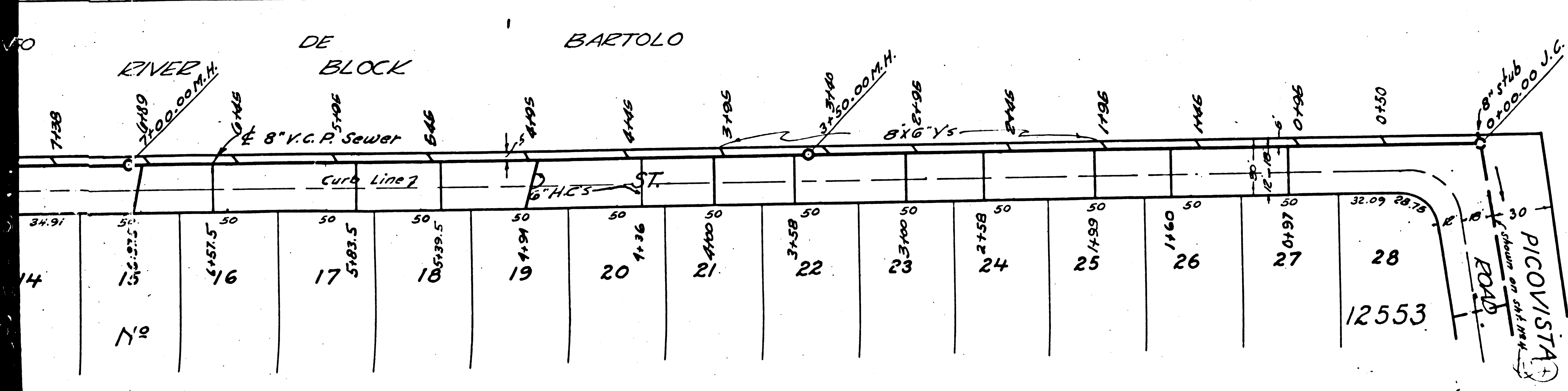
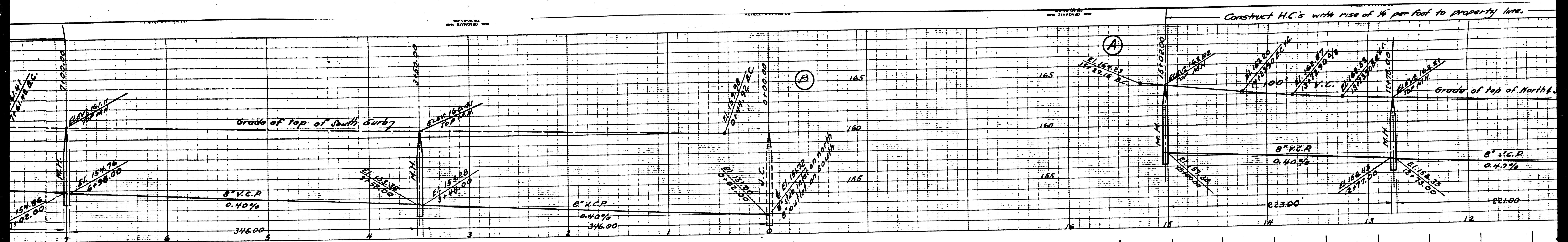


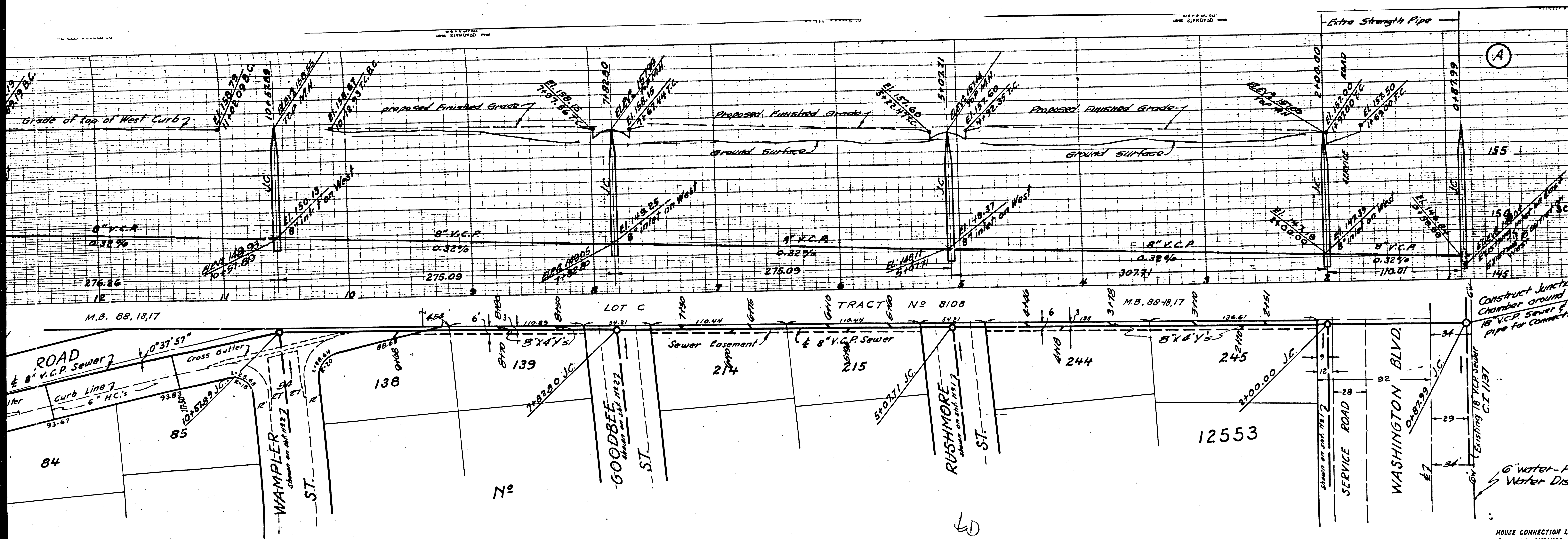
APPROVED *Edmund*
 COUNTY ENGINEER

APPROVED *C. L. Conitt*
 ACTING CHIEF ENGINEER OF COUNTY
 SANITATION DISTRICT NO. 2

CHECKED BY *James T. Patton* June 20
 HOUSE CONNECTION (ADDITION) REVISED 8-15-49 OFFICE OF COUNTY ENGINEER REG. C.E.
 REVISION CHECKED BY *Edmund* 8-18-49

1068





PROFILE, ALIGNMENT AND GRADE OF
SANITARY SEWERS
 TO BE CONSTRUCTED IN
TRACT NO 12553
PICOVISTA ROAD
 BETWEEN WASHINGTON BLVD & HOMEBROOK ST.
 MILLUX AVE & CORD AVE.
 BETWEEN WASHINGTON BLVD & GOODBEE ST.
PRIVATE CONTRACT NO 068
 SCALES VERT. 1"=4'
 (HORIZ. 1"=40')
 SHEET 4 OF 4 SHEETS
 PREPARED IN THE OFFICES OF
KEMMERER ENGR. CO.

John M. Kemmerer
 REG. C.E. NO 272

FOR LEGEND & NOTE SEE
 SHEET ONE.

RECEIVED
 SEP 19 1949
 SANITATION DISTRICT NO 2
 APPROVED *Edmund*
 COUNTY ENGINEER

APPROVED *C. J. Cramer*
 ACTING CHIEF ENGINEER OF COUNTY
 SANITATION DISTRICT NO 2

CHECKED BY James T. Reardon June 20 1949
 OFFICE OF COUNTY ENGINEER REG. C.E. NO 272

HOUSE CONNECTION LOCATIONS REVISED 8-18-49
 REVISION CHECKED BY *F. G. ...* 8-18-49

