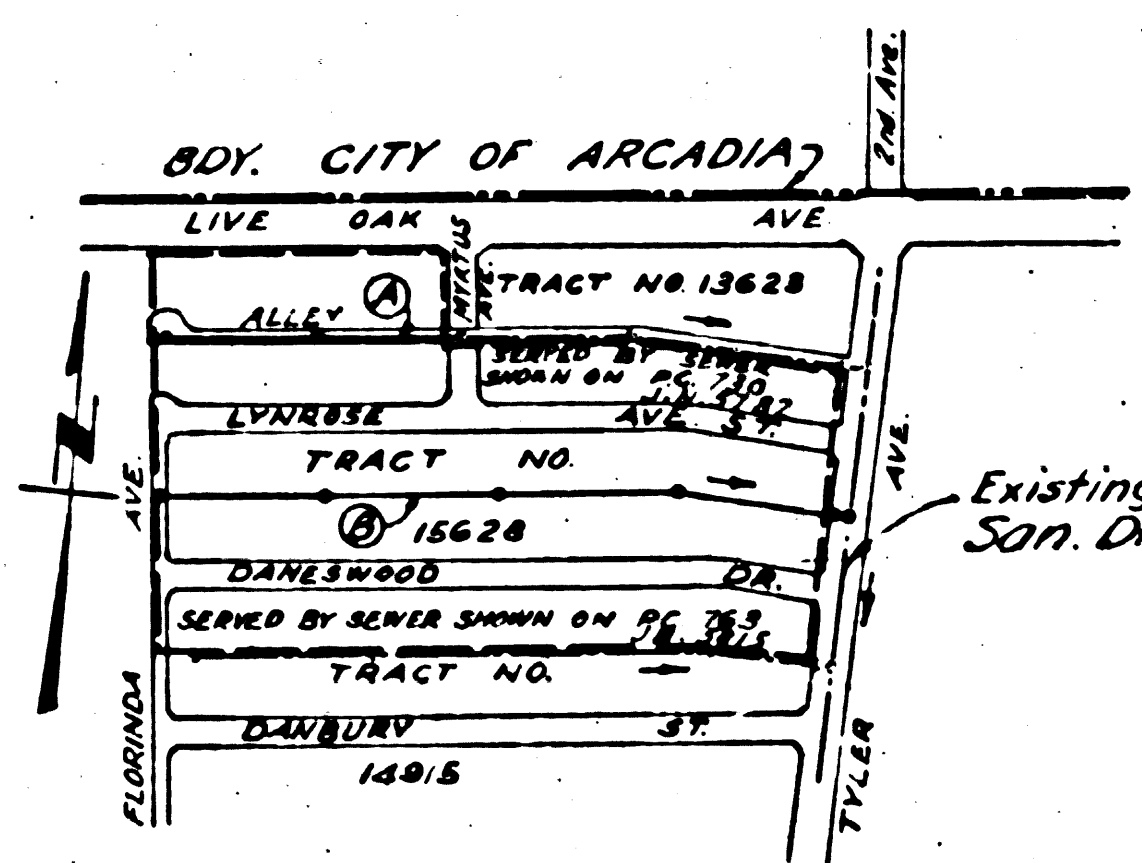
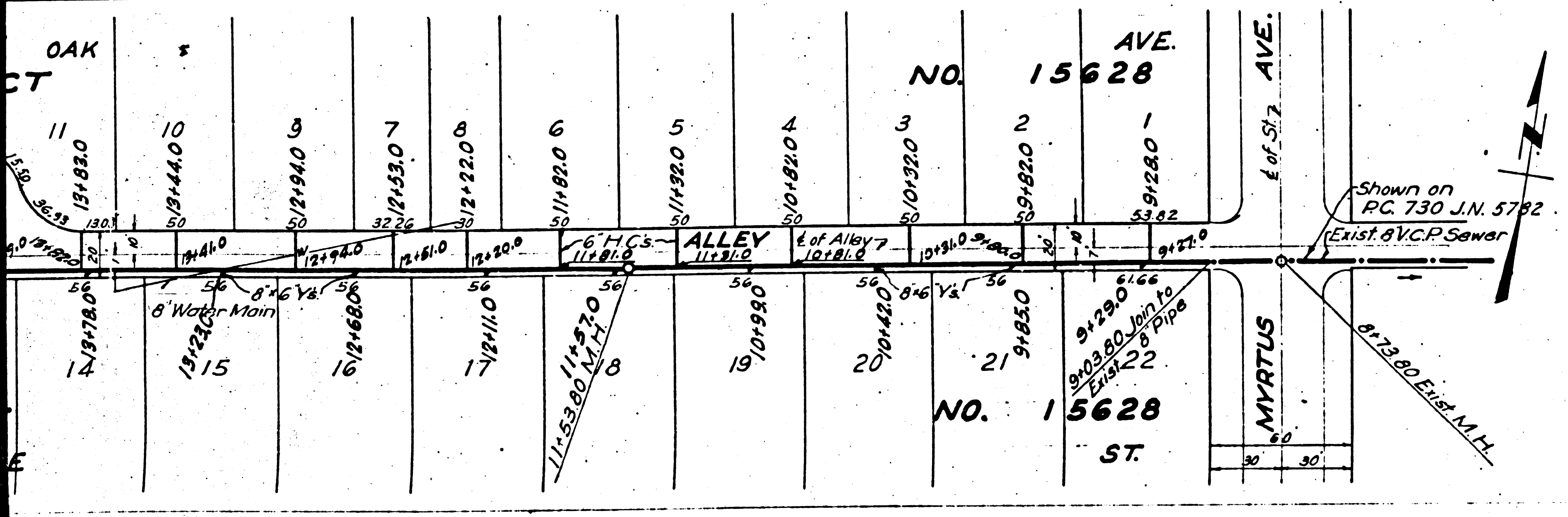


PROFILE ALIGNMENT AND GRADE OF
**SANITARY SEWERS
TO BE CONSTRUCTED IN
ALLEY**
MYRTUS AVE TO SEEN OF MYRTUS AVE
SEWER RIGHT OF WAY
TYLER AVE TO FLORINDA AVE
IN TRACT 15628

PRIVATE CONTRACT NO. 1087
NO. 15628 W.S. 46 JUNE 1943
SHEET 1 OF 1 SHEETS
**PREPARED IN THE OFFICE OF
KARL E. TUTTLE**



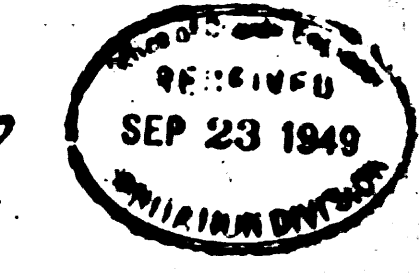
NOTE:
Grades to which this improvement is to be constructed are shown on Plans and Profile. Grade points for top of curb, center line of street or center line of alley are shown by circles on Profiles. At all points between designated points the grade shall be established so as to conform to a straight line drawn between said designated points.
Elevations are in feet above U.S.G.S. datum or mean sea level.
This drawing and the data hereon are hereby made a part of the specifications.
Work shall be constructed according to specifications on file in the office of the County Engineer and shall be prosecuted only in the presence of the County Engineer.
Before work can be started the contractor must obtain a permit to excavate in County Streets from the L.A. County Road Dept., 211 So. Main St., and make a deposit with the County Engineer, 828 County Engineering Bldg. sufficient to cover the cost of construction inspection and record plans.
If work is to be done in a State Highway, a permit must be obtained from the State of California Division of Highways, 808 State Bldg. after making the deposit with the County Engineer.

BY *Karl E. Tuttle* R.E. 2000
FOR LEGEND
SEE PLAN No. S-664

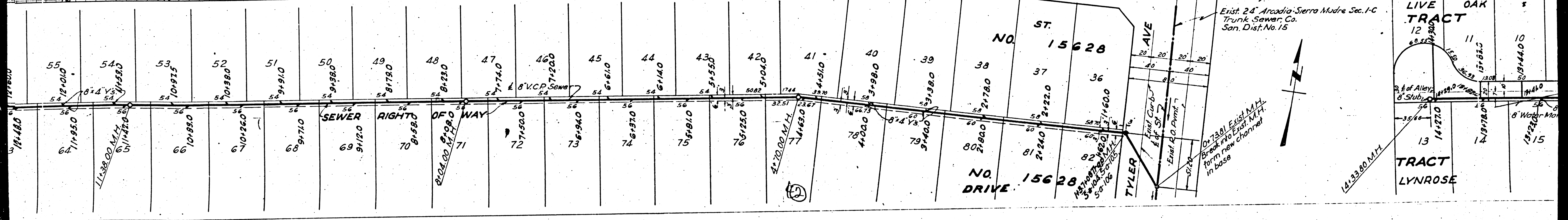
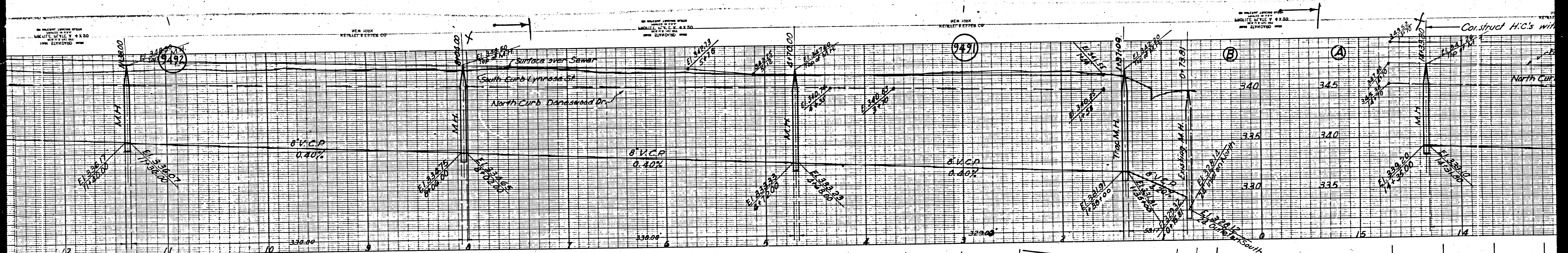
APPROVED *Karl E. Tuttle*
COUNTY ENGINEER

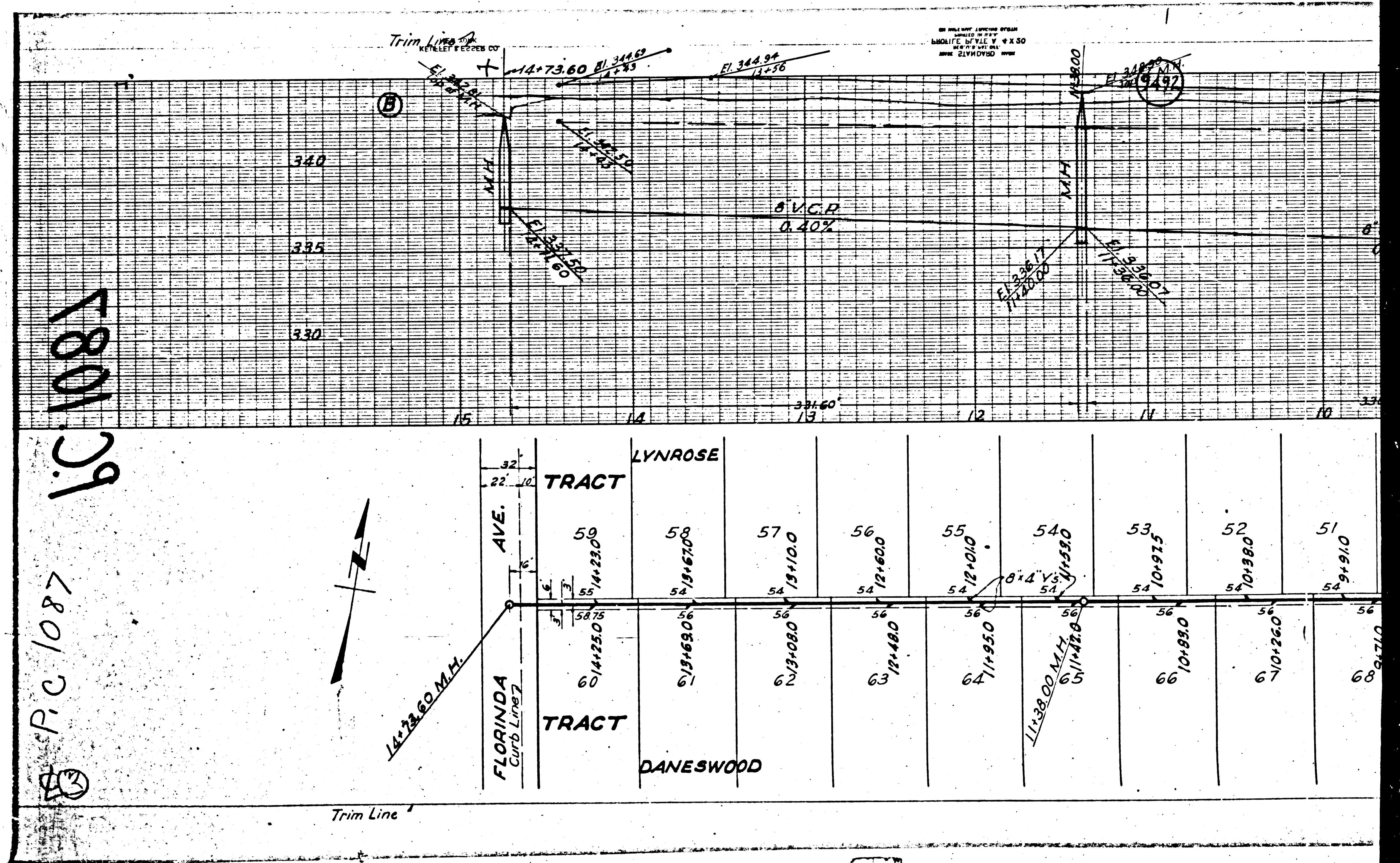
APPROVED *James T. Roulton*
CHIEF ENGINEER OF COUNTY
SANITATION DISTRICT NO. 15

CHECKED BY *James T. Roulton* 8/31/43
Office of County Engineer, R.E. 7163



TRIM LINE





1801 29

P.C. 1087