

USE STANDARD MANHOLE FRAMES AND COVERS 24\"/>

USE STANDARD STRENGTH PIPE EXCEPT AS NOTED

USE CEMENT MORTAR FOR ALL VITRIFIED CLAY PIPE JOINTS

EXCAVATE ALL TRENCHES WITHIN PAVED AREAS TO MEET LOS ANGELES COUNTY ROAD DEPT. REQUIREMENTS

CONSTRUCT HOUSE CONNECTIONS WITH INVERT AT PROPERTY LINE SET BELOW CURB GRADE

MINIMUM FOUR FEET DE MINIMUM AT POINTS OF INTERFERENCE WITH POLES, ETC.

ALL STRUCTURES SHALL BE BRICK SEWER STRUCTURES 24\"/>

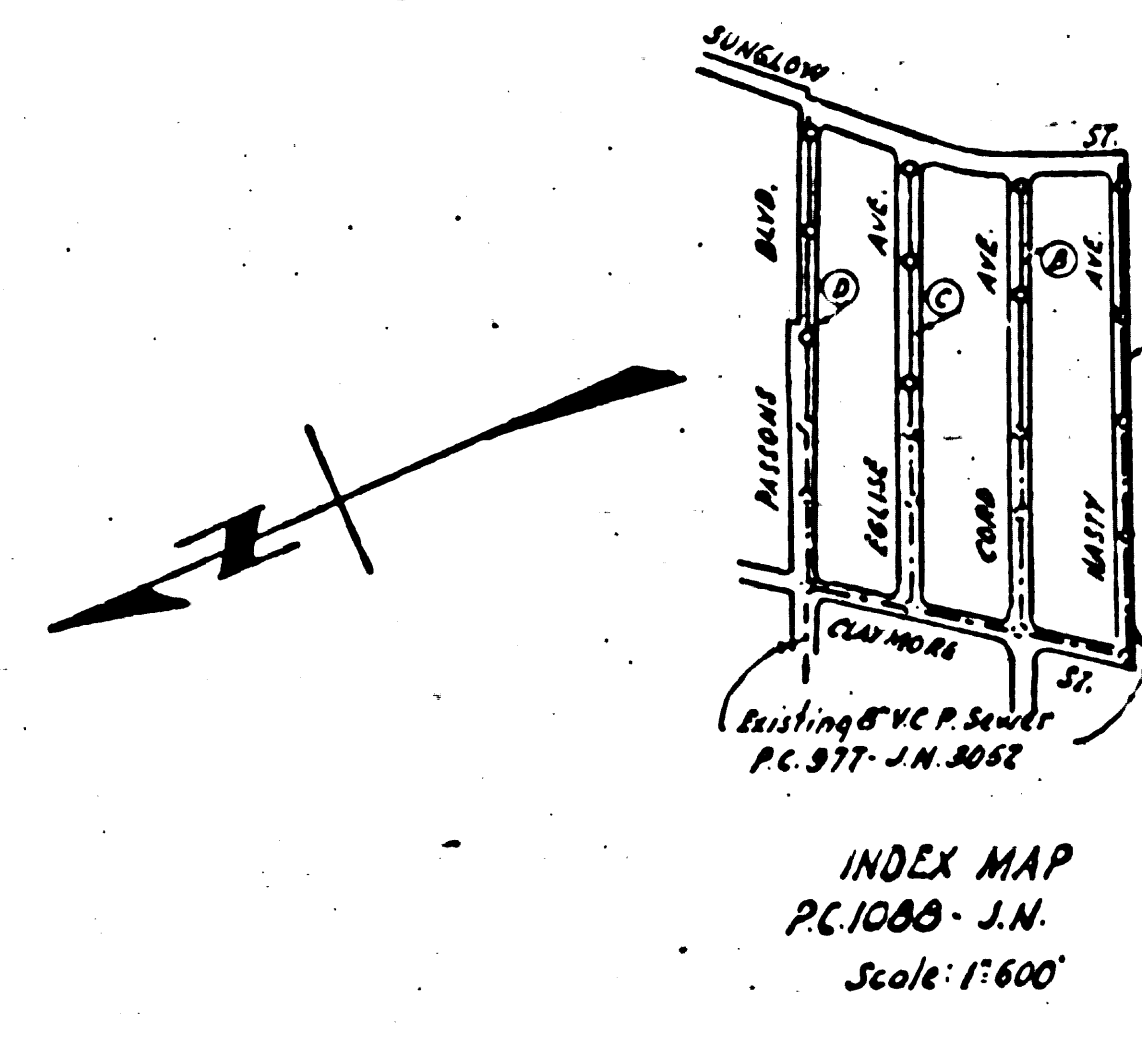
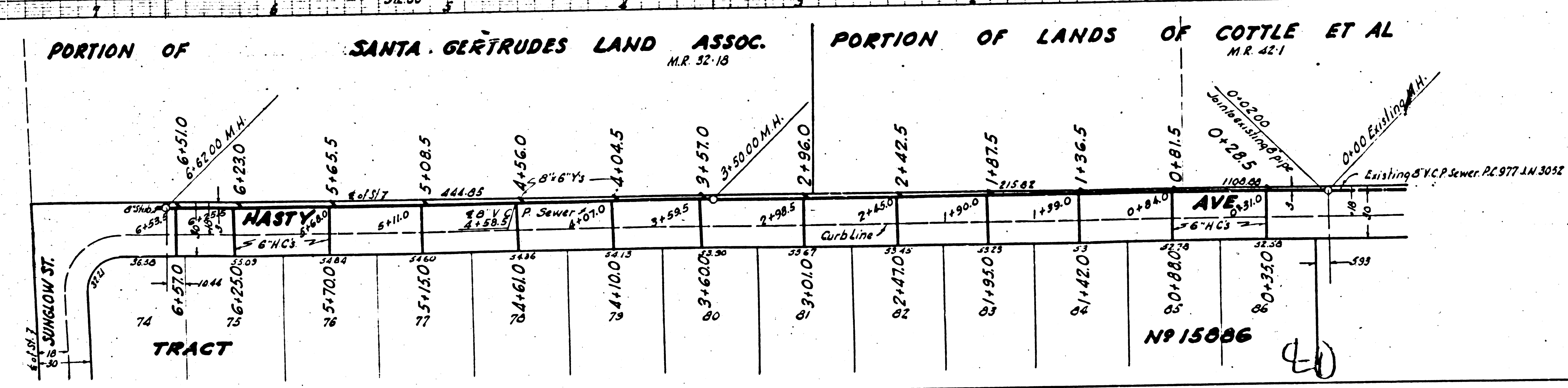
PROFILE, ALIGNMENT AND GRADE OF
SANITARY SEWERS
 TO BE CONSTRUCTED IN
HASTY AVENUE
CORD AVENUE
EGLISE AVENUE
PASSONS BOULEVARD
 BETWEEN SOUTH LINE OF TRACT N 15866 TO SUNGLOW ST.

PRIVATE CONTRACT NO. 1000
 MS. 36

ONE SHEET

PREPARED IN THE OFFICE OF
KARL F. TUTTLE
 BY *[Signature]*
 REGISTERED CIVIL ENGINEER
 No. C.E. No. 2000

NOTE:
 NO REPRESENTATIVE OF THE COUNTY ENGINEER SHALL BE HELD RESPONSIBLE FOR ANY PART OF THE WORK.
 THE CONTRACTOR SHALL BE RESPONSIBLE FOR OBTAINING ALL NECESSARY PERMITS FROM THE COUNTY ENGINEER WITHIN THE SPECIFIED TIME.
 THE CONTRACTOR SHALL BE RESPONSIBLE FOR OBTAINING ALL NECESSARY PERMITS FROM THE COUNTY ENGINEER WITHIN THE SPECIFIED TIME.
 THE CONTRACTOR SHALL BE RESPONSIBLE FOR OBTAINING ALL NECESSARY PERMITS FROM THE COUNTY ENGINEER WITHIN THE SPECIFIED TIME.



FOR LEGEND
 SEE PLAN NO. 3-0-64

NOTE:
 GRADES TO WHICH THIS IMPROVEMENT IS TO BE CONSTRUCTED ARE SHOWN ON PLAN AND PROFILE.
 GRADE POINTS FOR TOP OF CURB, CENTER LINE OF STREET OR CENTER LINE OF ALLEY ARE SHOWN BY CIRCLES ON PROFILE. STALL POINTS BETWEEN DESIGNATED POINTS THE GRADE SHALL BE ESTABLISHED TO CONFORM TO A STRAIGHT LINE DRAWN BETWEEN SAID DESIGNATED POINTS.
 ELEVATIONS ARE IN FEET ABOVE 9703 DATUM OR MEAN SEA LEVEL.
 THIS DRAWING AND THE DATA HEREON ARE HEREBY MADE A PART OF THE SPECIFICATIONS.
 WORK SHALL BE CONSTRUCTED ACCORDING TO SPECIFICATIONS ON FILE IN THE OFFICE OF THE COUNTY ENGINEER AND SHALL BE PRESERVED ONLY IN THE PRESENCE OF THE COUNTY ENGINEER.
 BEFORE WORK CAN BE STARTED THE CONTRACTOR MUST OBTAIN A PERMIT TO EXCAVATE IN COUNTY STREETS FROM THE L.A. COUNTY ROAD DEPT., 211 S. MAIN ST., AND MAKE A DEPOSIT WITH THE COUNTY ENGINEER \$25.00 COUNTY ENGINEERING FEE, SUFFICIENT TO COVER THE COST OF CONSTRUCTION INSPECTION AND RECORD PLANS.

COUNTY OF LOS ANGELES, CALIFORNIA

APPROVED *[Signature]*
 COUNTY ENGINEER

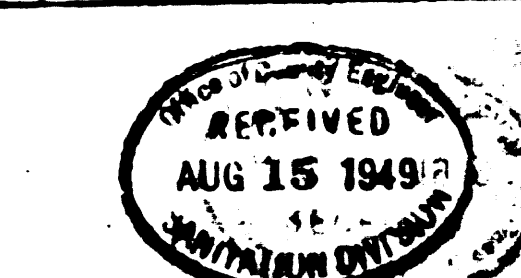
APPROVED *[Signature]*
 CHIEF ENGINEER OF COUNTY
 SANITARIAN DIST. NO. 6

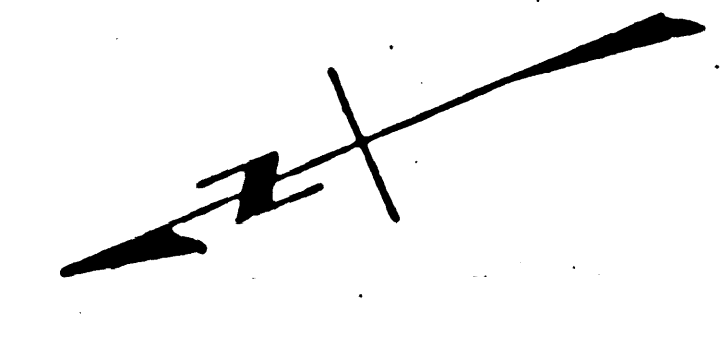
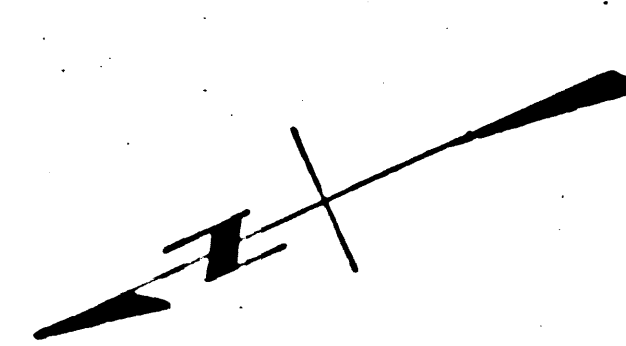
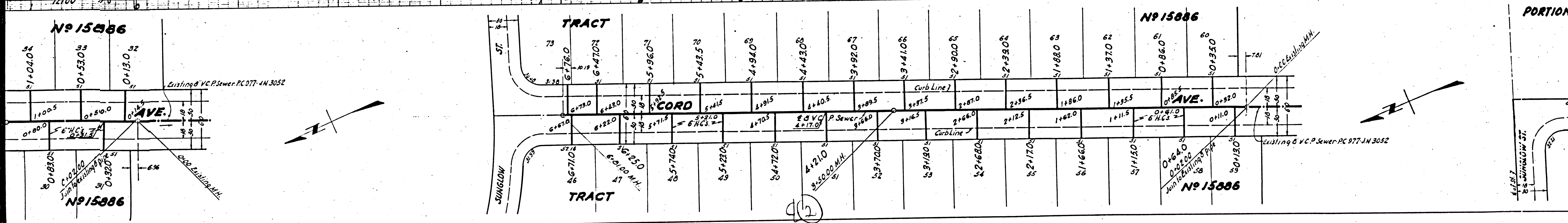
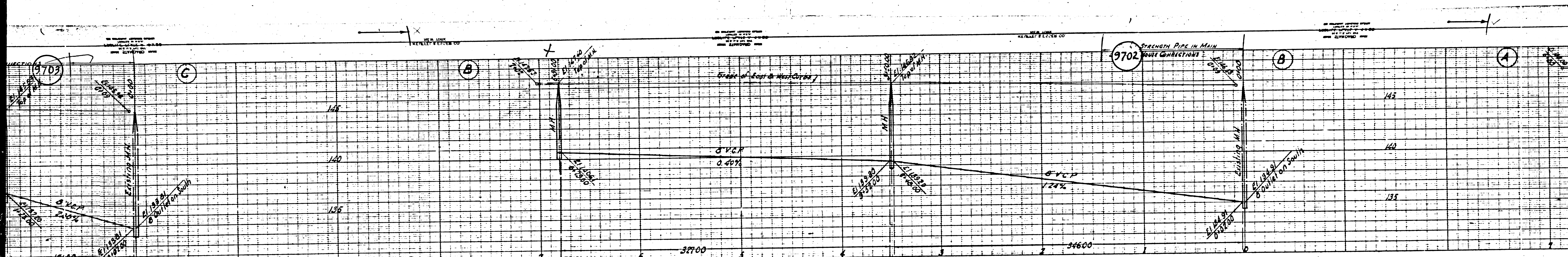
CHECKED BY *[Signature]* 8-1-1949
 OFFICE OF COUNTY ENGINEER RECORDS DIV.

INDEX MAP
 PC. 1000 - J.N.
 Scale: 1\"/>

Checked by *[Signature]* 2-6-50
 Trim Line

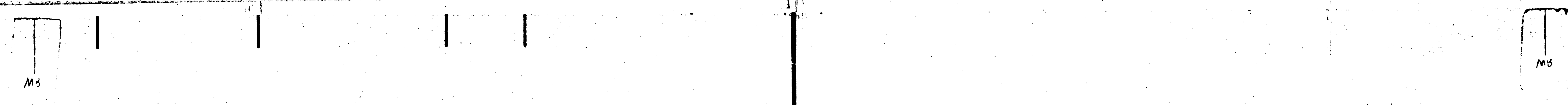
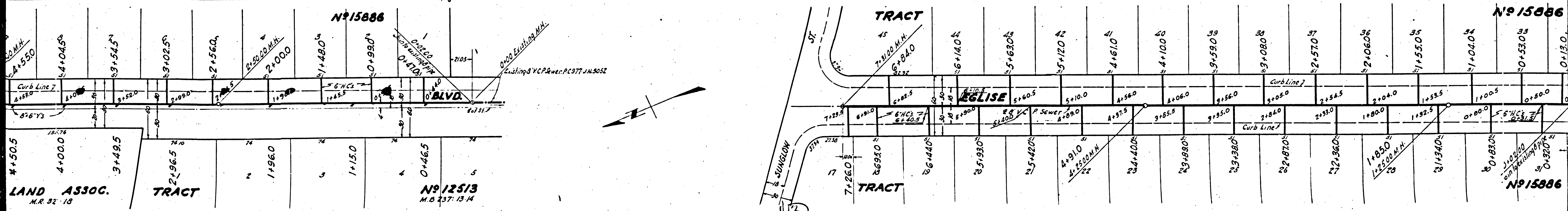
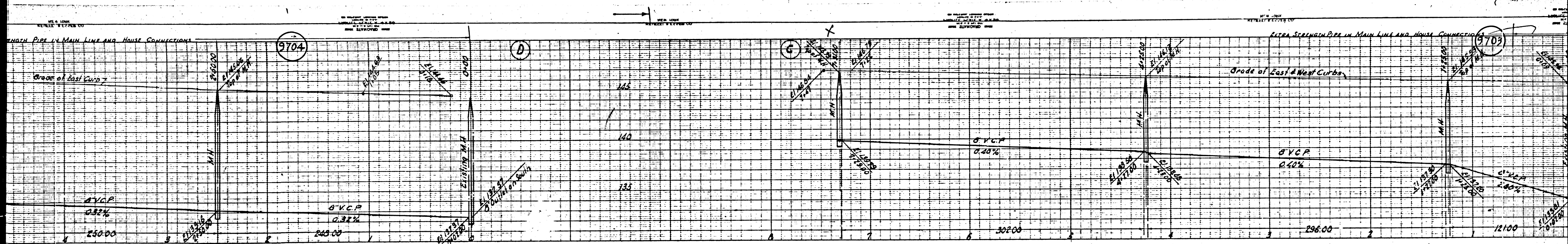
PC. 1088

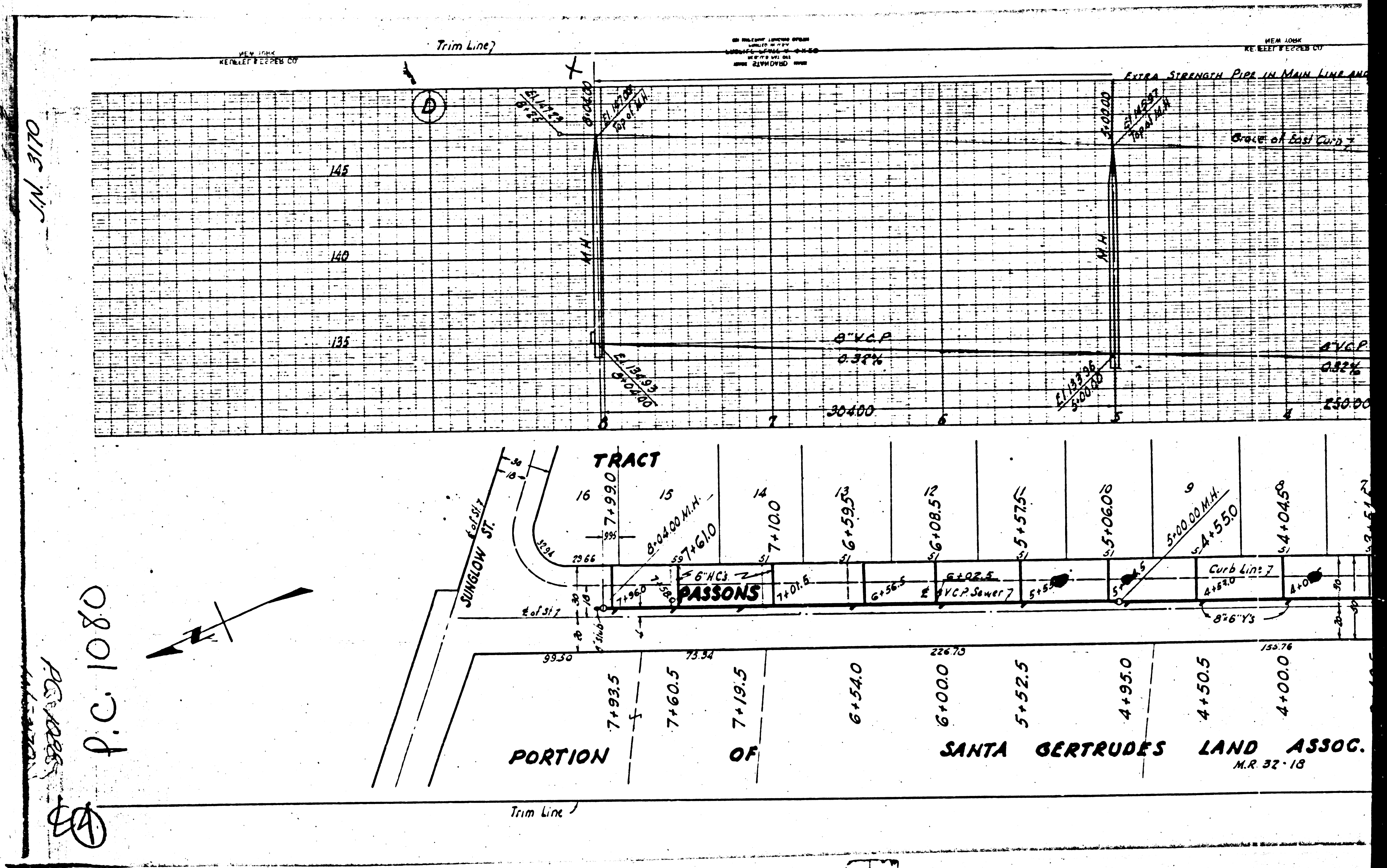




M3

M3





DIE N

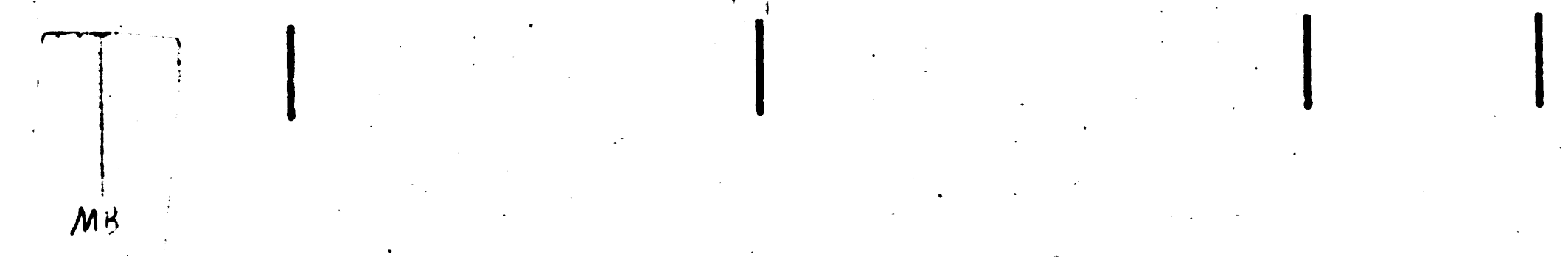
P.C. 1080

PASSONS

P.C.

Station	Notes
7+93.5	Point of Curvature
7+60.5	Point of Tangency
7+19.5	Point of Vertical Intersection
6+54.0	Point of Vertical Curvature
6+00.0	Point of Vertical Intersection
5+52.5	Point of Vertical Curvature
4+95.0	Point of Vertical Intersection
4+50.5	Point of Vertical Curvature
4+00.0	Point of Vertical Intersection

PORTION OF SANTA GERTRUDES LAND ASSOC. M.R. 32-18



M.S.