

**DOUBLE SCALE**

VERTICAL 1" = 8'  
HORIZONTAL 1" = 40'

- (1) CONSTRUCT HOUSE CONNECTIONS WITH INVERT AT CURB LINE 6' BELOW CURB GRADE, EXCEPT AS NOTED.
  - (2) USE SAUT STANDARD MANHOLE FRAMES AND COVERS.
  - (3) USE STANDARD STRENGTH PIPE (EXCEPT AS NOTED).
  - (4) ALL STRUCTURES SHALL BE BRICK SEWER STRUCTURES S-1-704.
  - (5) CONSTRUCT TOPS OF ALL STRUCTURES IN RIGHT OF WAY 6" ABOVE FINISHED GRADE.
  - (6) ENCASE FOUR FEET OF SEWER AT POINTS OF INTERFERENCE WITH POLES. AS PER S-a-119.
  - (7) USE CEMENT MORTAR FOR VITRIFIED CLAY PIPE JOINTS.
  - (8) RESURFACE ALL TRENCH WITHIN PAVED AREA TO MEET LOS ANGELES COUNTY ROAD DEPARTMENT REQUIREMENTS.
- NO REPRESENTATIVE OF THE COUNTY ENGINEER WILL SURVEY OR LAYOUT ANY PORTION OF THE WORK.
- THE OWNER OR HIS AUTHORIZED REPRESENTATIVE SHALL FURNISH THE COUNTY ENGINEER WITH GRADE SHEETS AND STATIONS OF ALL HOUSE CONNECTIONS AND "Y" BRANCHES AND SHALL PROVIDE STAKES FOR THEM AT THEIR PROPER LOCATIONS WITH STATONING PLAINLY MARKED. ANY CHANGE OF LOCATION SHALL BE REQUESTED IN WRITING BY THE OWNER OR HIS REPRESENTATIVE.

9658

**BENCH MARK**

1st Elev. 243.00 Sorehead in curb & return S.W. Corner L.A. TIJERA (old) & SLAUSON; F.B. 764; Pg. 51

2nd Elev. 160.05 Spike in East Curb ACACIA STREET 10' North of B & R. To 6322 ST. F.B. 180; Pg. 3

All Field Books Refer to Los Angeles Investment Co. OLD DATUM

Note: Add 5.175 ft. to all elevations shown hereon to agree with U.S.G.S. datum plane adopted July 1st 1923, by Ordinance No. 52,222 (N.S.)

**NOTE:**  
No Revisions shall be made in these plans without approval of the County Engineer.

**PROFILE ALIGNMENT AND GRADE OF**

**SANITARY SEWERS**

TO BE CONSTRUCTED IN

FIRST ALLEY WEST OF ACACIA ST

150 FT. N. OF 62ND ST. TO 100 FT. S. OF 59TH ST.

House connections to West only.

FIRST ALLEY NORTH OF 62ND ST

150 FT. W. OF ACACIA ST TO 285 FT. W. OF ACACIA ST.

**SANITARY SEWER RIGHTS OF WAY**

TRACT NO. 15839 M.B. PGS.

PRIVATE CONTRACT NO. 1095

W.S. 24

SHEET 1 OF 2 SHEETS

PREPARED IN THE OFFICES OF LOS ANGELES INVESTMENT CO.

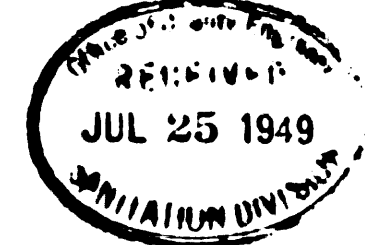
BY: *[Signature]* July 12 1949

REG. C.E. No. 1629

FOR LEGEND

(SEE PLAN No. S-a-64)

JULY 1949

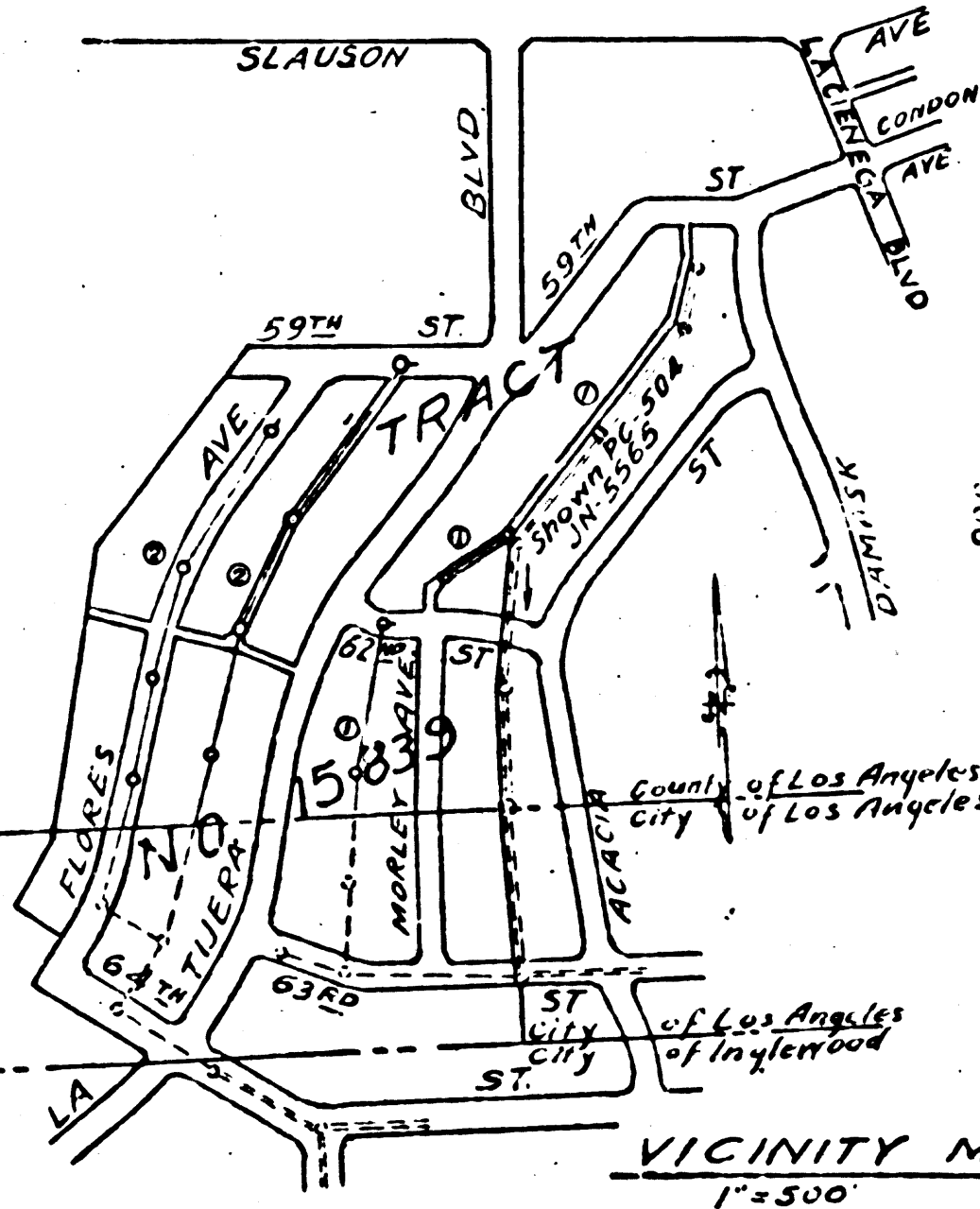


**NOTE:**  
GRADES TO WHICH THIS IMPROVEMENT IS TO BE CONSTRUCTED ARE SHOWN ON PLANS AND PROFILE. GRADE POINTS FOR TOP OF CURB, CENTER LINE OF STREET OR CENTER LINE OF ALLEY ARE SHOWN BY CURVES ON PROFILES AT ALL POINTS BETWEEN DESIGNATED POINTS. THE GRADE SHALL BE ESTABLISHED SO AS TO CONFORM TO A STRAIGHT LINE DRAWN BETWEEN SAID DESIGNATED POINTS.  
ELEVATIONS ARE 5.175' BELOW U.S.G.S. DATUM OF MEAN SEA LEVEL.  
THIS DRAWING AND THE DATA HEREON ARE HEREBY MADE A PART OF THE SPECIFICATIONS AND BEFORE WORK CAN BE STARTED, THE CONTRACTOR MUST OBTAIN A PERMIT TO EXCAVATE IN COUNTY STREETS FROM THE L.A. COUNTY ROAD DEPT. 211, 50 MAIN ST., AND MAKE A DEPOSIT WITH THE COUNTY ENGINEER 220 L.A. CO. ENO. BLDG. SUFFICIENT TO COVER THE COST OF CONSTRUCTION INSPECTION AND RECORD PLANS.  
IF WORK IS TO BE DONE IN A STATE HIGHWAY A PERMIT MUST BE OBTAINED FROM THE STATE OF CALIFORNIA, DIVISION OF HIGHWAYS, 608 STATE BUILDING AFTER MAKING THE DEPOSIT WITH THE COUNTY ENGINEER.  
COUNTY OF LOS ANGELES, CALIFORNIA

APPROVED *[Signature]*  
COUNTY ENGINEER

APPROVED *[Signature]*  
CHIEF ENGINEER OF COUNTY SANITATION DISTRICT No. 5

CHECKED BY *[Signature]* July 14 1949  
OFFICE OF COUNTY ENGINEER 220 ST. NO.

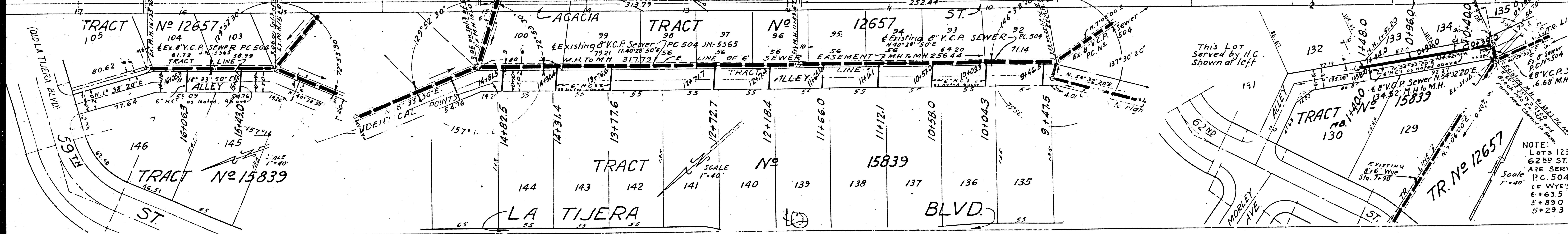
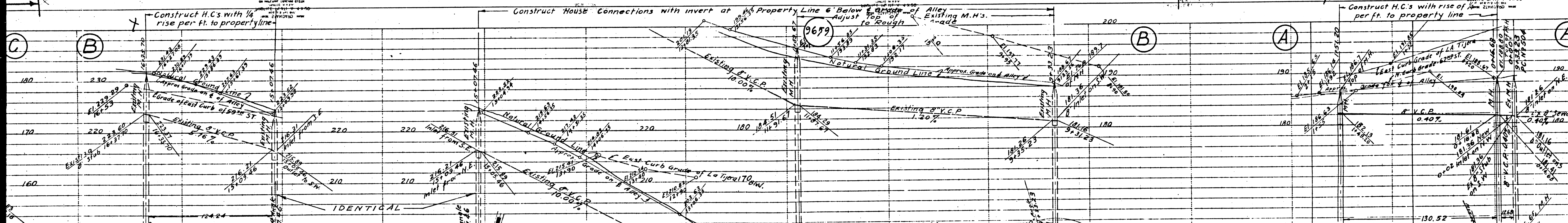
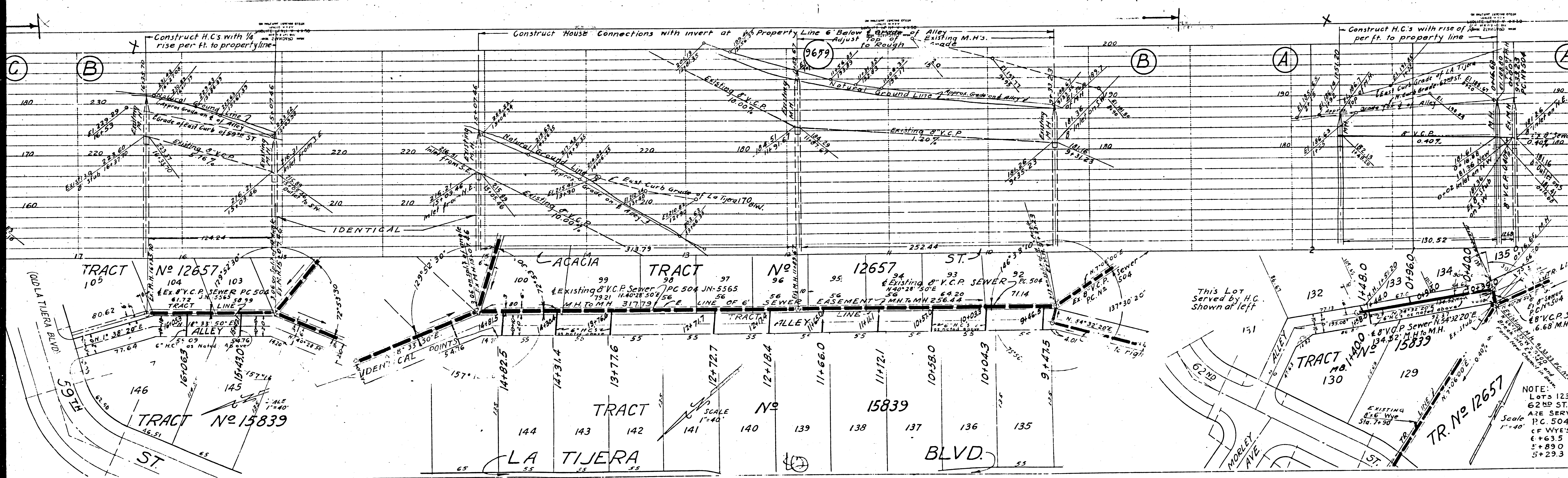


PC. 1095 JN-3178

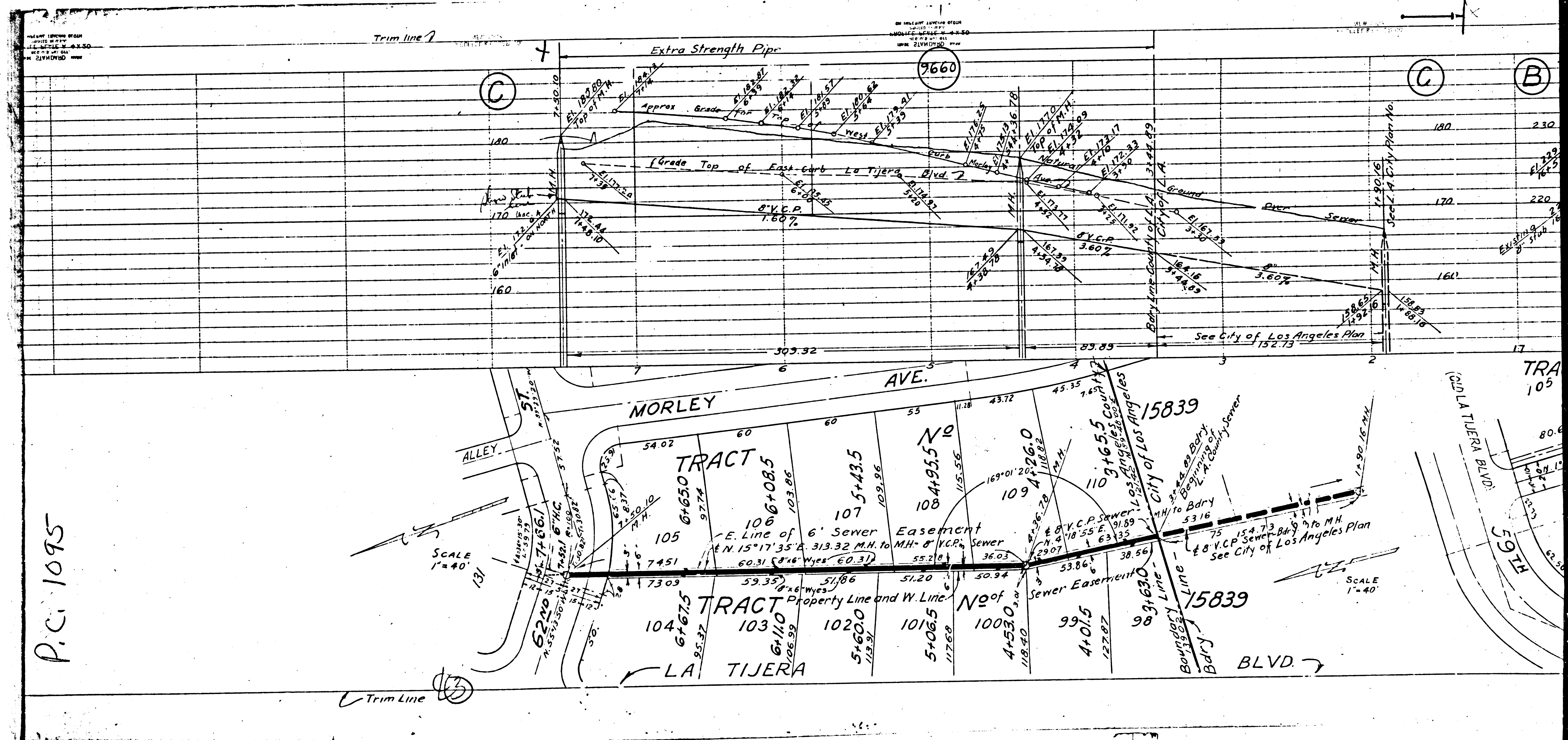
**LEGEND**  
--- Elevation 50' line  
--- Sewer to be constructed in City of Los Angeles  
--- Sewer to be constructed outside City of Los Angeles

ED

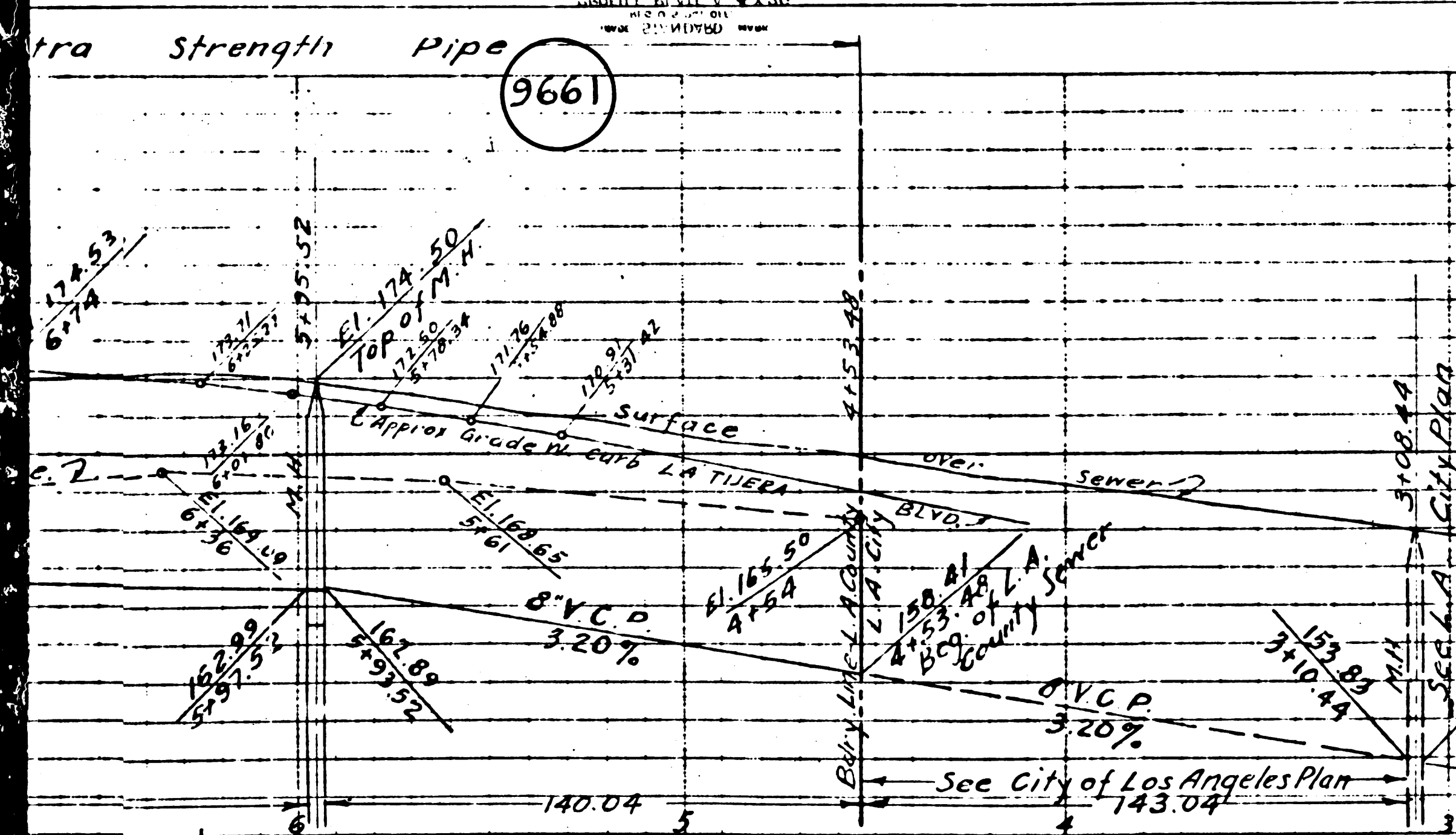
Trim Line



NOTE:  
 Lots 123  
 62nd ST.  
 ARE SERV  
 P.C. 504  
 C.F. WYES  
 6+83.5  
 5+89.0  
 5+29.3



P.C. 1095



**DOUBLE SCALE**  
 VERTICAL 1"=8'  
 HORIZONTAL 1"=40'

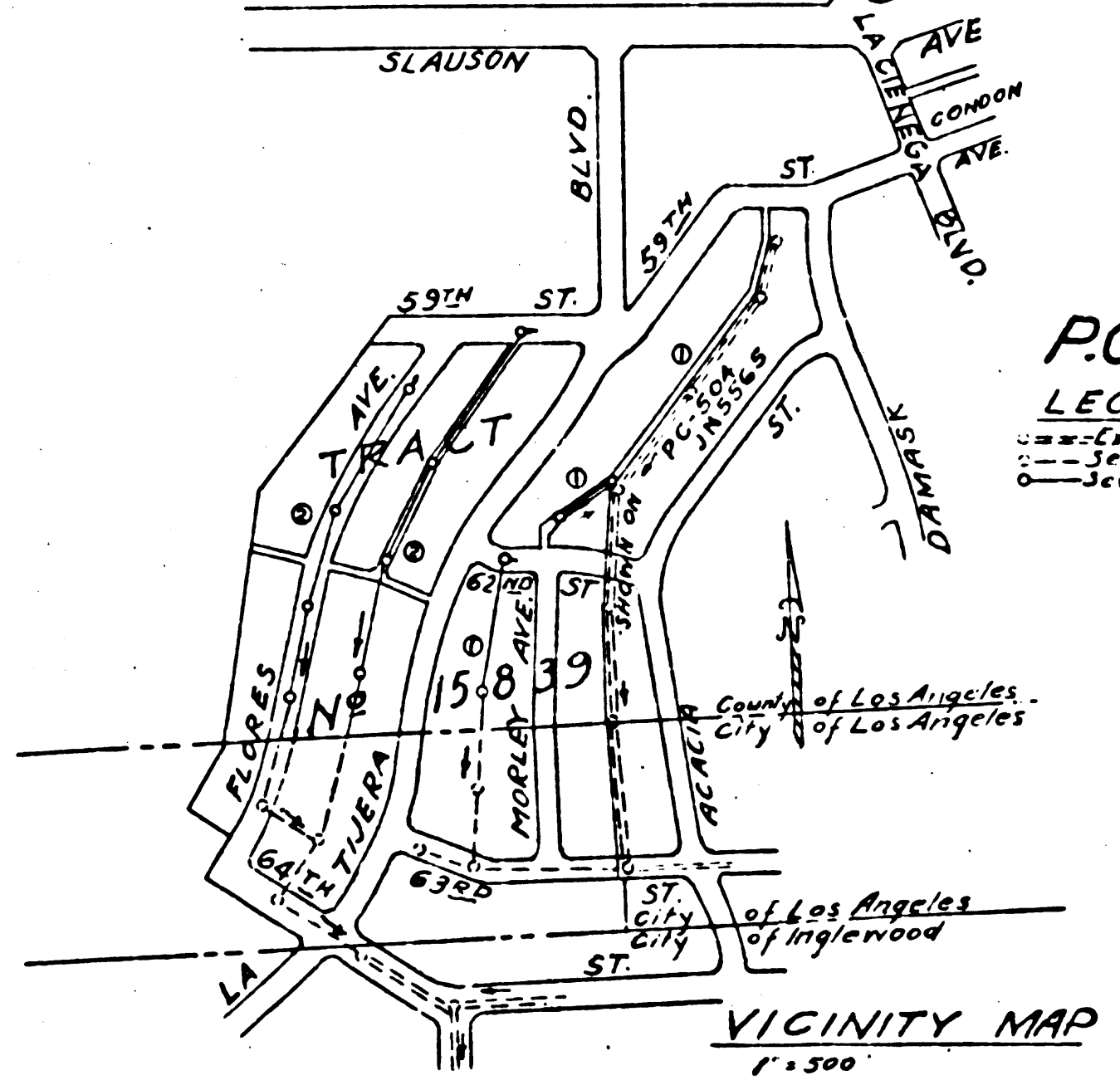
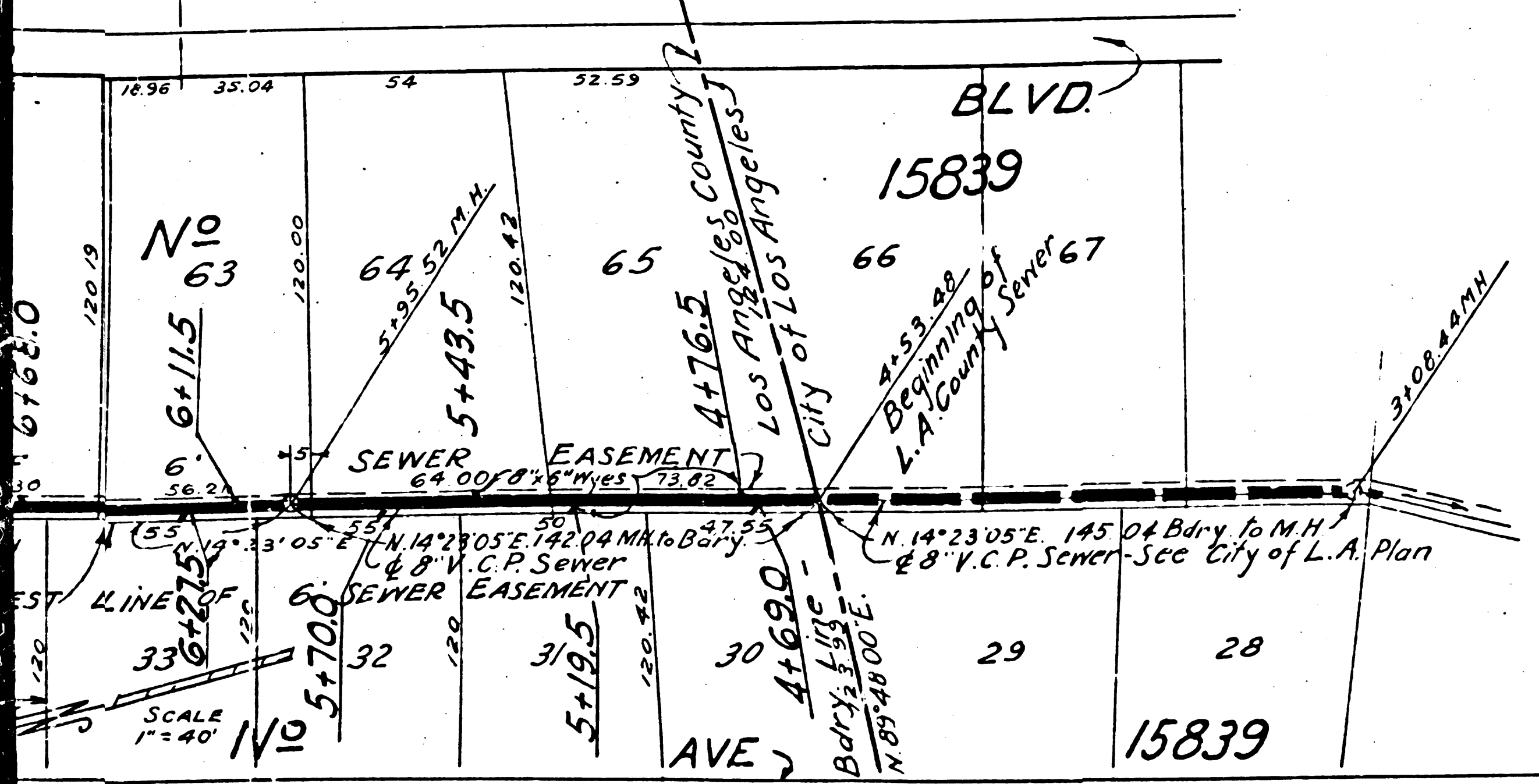
**BENCH MARK**  
 Fd. Elev 253.00 Screwhead in curb & return S.W. Corner LA TIJERA (old) & SLAUSON. F.B. 184. Pg. 57  
 Fd. El. 190.20 Nail Lead E. Curb of ACACIA ST. 3' S. of E. Prod. of 6 1/2" ST. F.B. 180 Pg. 3  
 All Field Books Refer to Los Angeles Investment Co.  
**OLD DATUM**  
 Note: Add 5.775 ft to all elevations shown hereon to agree with 5-G-S datum plane adopted July 1st 1925, by Ordinance No. 52,222 (N.S.)

PROFILE ALIGNMENT AND GRADE OF  
**SANITARY SEWERS**  
 TO BE CONSTRUCTED IN

**FLORES AVE.**  
 160 FT. SLY. OF 59TH ST. TO 1070 FT. SLY. OF 59TH ST.  
**FIRST ALLEY WEST OF LA TIJERA BLVD.**  
 59TH ST. TO FIRST ALLEY SOUTH OF 59TH ST.  
**SANITARY SEWER RIGHTS-OF-WAY**  
 IN TRACT NO. 15839 M.B. PGS.  
**PRIVATE CONTRACT NO. 1095**  
 W.S. 24  
 SHEET 2 OF 2 SHEETS  
 PREPARED IN THE OFFICES OF  
**LOS ANGELES INVESTMENT CO.**

Vert. 1"=8'  
 SCALE Horiz. 1"=40' JULY, 1949

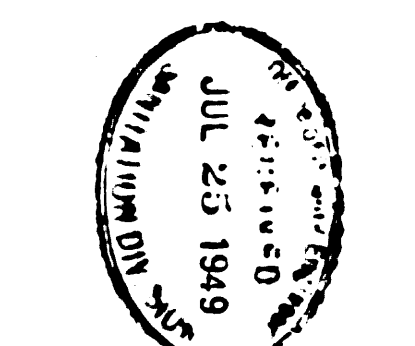
NOTE:  
 CONSTRUCT HOUSE CONNECTIONS WITH INVERT AT CURB  
 LINE 6" BELOW CURB GRADE EXCEPT AS NOTED.



**P.C. 1095 J.N.-3178**  
**LEGEND**  
 --- Existing Sewer Line  
 --- Sewer to be constructed in City of L.A.  
 --- Sewer to be constructed in County of L.A.

BY: *E.R. Williams* July 12 1949  
 REG. C.E. NO. 1629  
 FOR LEGEND  
 (SEE PLAN NO. 5-0-64)

NOTE:  
 FOR DETAILS SEE SHEET NO. 1

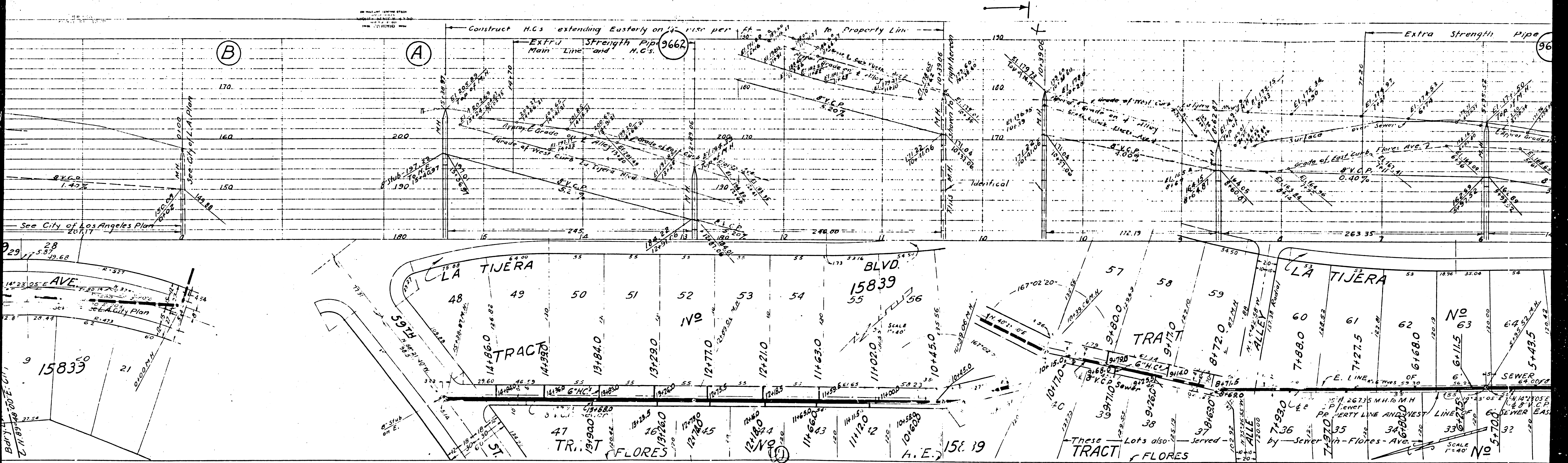


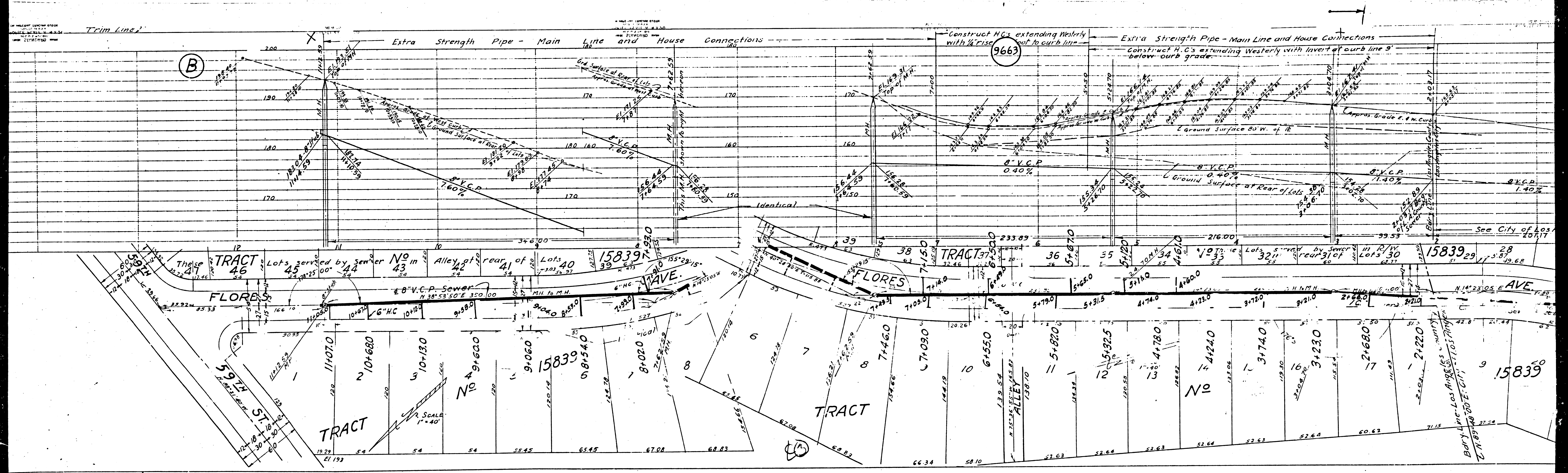
COUNTY OF LOS ANGELES, CALIFORNIA

APPROVED *E.R. Williams*  
 COUNTY ENGINEER

APPROVED *W.C. Brown*  
 CHIEF ENGINEER OF COUNTY  
 SANITATION DISTRICT NO. 5

CHECKED BY *James F. Patton* July 11 1949  
 OFFICE OF COUNTY ENGINEER REG. C.E. NO. 7103





Trim Line

(B)

9663

Extra Strength Pipe - Main Line and House Connections

Construct H.C.'s extending Westerly with 1/4" Rise

Extra Strength Pipe - Main Line and House Connections

Construct H.C.'s extending Westerly with Invert of curb line 9" below curb grade.

TRACT 46

TRACT 37

TRACT 28

FLORES

FLORES

AVE

TRACT

TRACT

15839

SCALE 1" = 40'

Trim Line