

USE STANDARD STRENGTH PIPE.  
 USE CEMENT MORTAR FOR ALL VITRIFIED CLAY PIPE JOINTS.  
 ENCASE FOUR FEET OF SEWER AT POINTS OF INTERFERENCE WITH POLES AS PER S. & H.S.  
 CONSTRUCT HOUSE CONNECTIONS WITH INVERT AT PROPERTY LINE FEET BELOW CURB GRADE EXCEPT AS NOTED.  
 ALL STRUCTURES SHALL BE BRICK SEWER STRUCTURES AS PER PLAN NO. S-8-104.  
 USE STANDARD MANHOLE FRAMES AND COVERS AS PER PLAN NO. S-8-117.  
 CONSTRUCT TOPS OF ALL STRUCTURES IN RIGHTS OF WAY 6" ABOVE FINISHED GRADE.  
 RESURFACE ALL TRENCHES WITHIN PAVED AREA TO MEET LOS ANGELES COUNTY ROAD DEPT. OR STATE HIGHWAY REQUIREMENTS.  
 ENCASE ALL SEWERS UNDER EXISTING 24" TRUNK SEWER WHERE CLEARANCE IS LESS THAN 1.5 FEET PER S. & H.S.

NO REVISIONS SHALL BE MADE IN THESE PLANS WITHOUT APPROVAL OF THE COUNTY ENGINEER. NO REPRESENTATIVE OF THE COUNTY ENGINEER WILL SURVEY OR LAY-OUT ANY PORTION OF THE WORK.  
 THE OWNER OR HIS AUTHORIZED REPRESENTATIVE SHALL FURNISH THE COUNTY ENGINEER WITH GRADE SHEETS AND STATIONS OF ALL HOUSE CONNECTIONS AND Y BRANCHES, AND SHALL PROVIDE STAKES FOR THEM AT THEIR PROPER LOCATIONS WITH STATIONING PLAINLY MARKED. ANY CHANGE OF LOCATION SHALL BE REQUESTED IN WRITING BY THE OWNER OR HIS REPRESENTATIVE.

PROFILE ALIGNMENT AND GRADE OF  
**SANITARY SEWERS**  
 TO BE CONSTRUCTED IN  
**WASHINGTON BOULEVARD**  
 BETWEEN CROWDALE AVE. & SORENSON AVE.  
**CROWDALE AVENUE**  
 BETWEEN WASHINGTON BLVD & BLANDING ST.

PRIVATE CONTRACT NO. 1096  
 W. S. 37  
 SHEET 1 OF 3 SHEETS

PREPARED IN THE OFFICES OF  
**KEMMERER ENG. CO.**

By *John McManis*  
 REG. C. E. NO. 172

FOR LEGEND  
 SEE PLAN NO. S-8-84

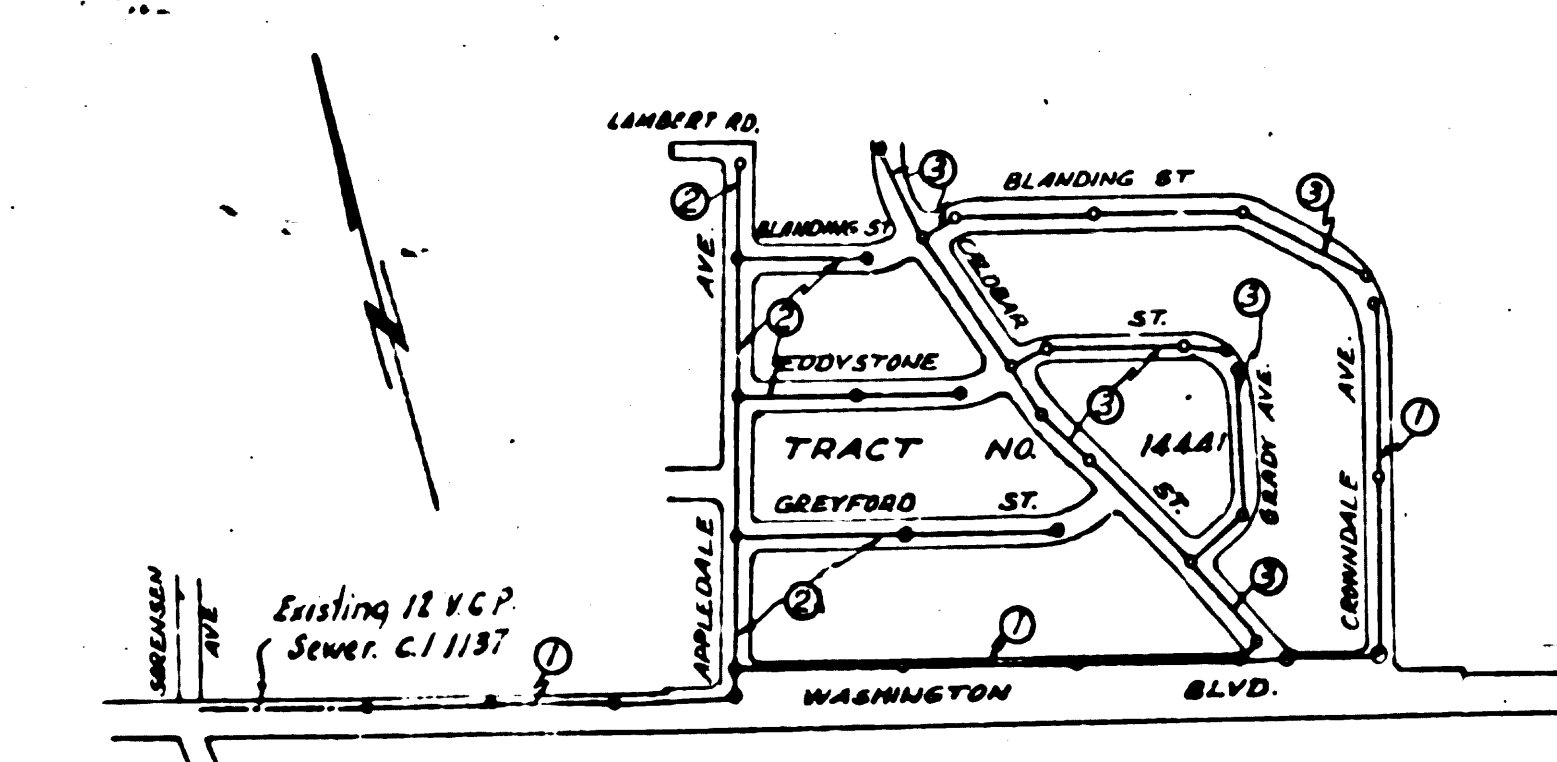
NOTE: GRADES TO WHICH THIS IMPROVEMENT IS TO BE CONSTRUCTED ARE SHOWN ON PLANS AND PROFILES. GRADE POINTS FOR TOP OF CURB, CENTER LINE OF STREET OR CENTER LINE OF ALLEY ARE SHOWN BY CIRCLES ON PROFILES AT ALL POINTS BETWEEN DESIGNATED POINTS. THE GRADE SHALL BE ESTABLISHED SO AS TO CONFORM TO A STRAIGHT LINE DRAWN BETWEEN SAID DESIGNATED POINTS.  
 ELEVATIONS ARE IN FEET ABOVE U. S. G. & DATUM OR MEAN SEA LEVEL.  
 THIS DRAWING AND THE DATA HEREON ARE HEREBY MADE A PART OF THE SPECIFICATIONS.  
 THE DRAWING AND SHALL BE PROSECUTED ONLY IN THE PRESENCE OF THE COUNTY ENGINEER. BEFORE WORK CAN BE STARTED, THE CONTRACTOR MUST OBTAIN A PERMIT TO EXCAVATE IN THE COUNTY ENGINEER, ROOM 830 AT 108 W. 1<sup>ST</sup> STREET, SUFFICIENT TO COVER THE COST OF COUNTY ENGINEER INSPECTION AND RECORD PLANS.  
 IF WORK IS TO BE DONE IN A STATE HIGHWAY, A PERMIT MUST BE OBTAINED FROM THE STATE OF CALIFORNIA, DIVISION OF HIGHWAYS, 808 STATE BUILDING, AFTER MAKING THE DEPOSIT WITH THE COUNTY ENGINEER.

COUNTY OF LOS ANGELES, CALIFORNIA

APPROVED *Edmund*  
 COUNTY ENGINEER

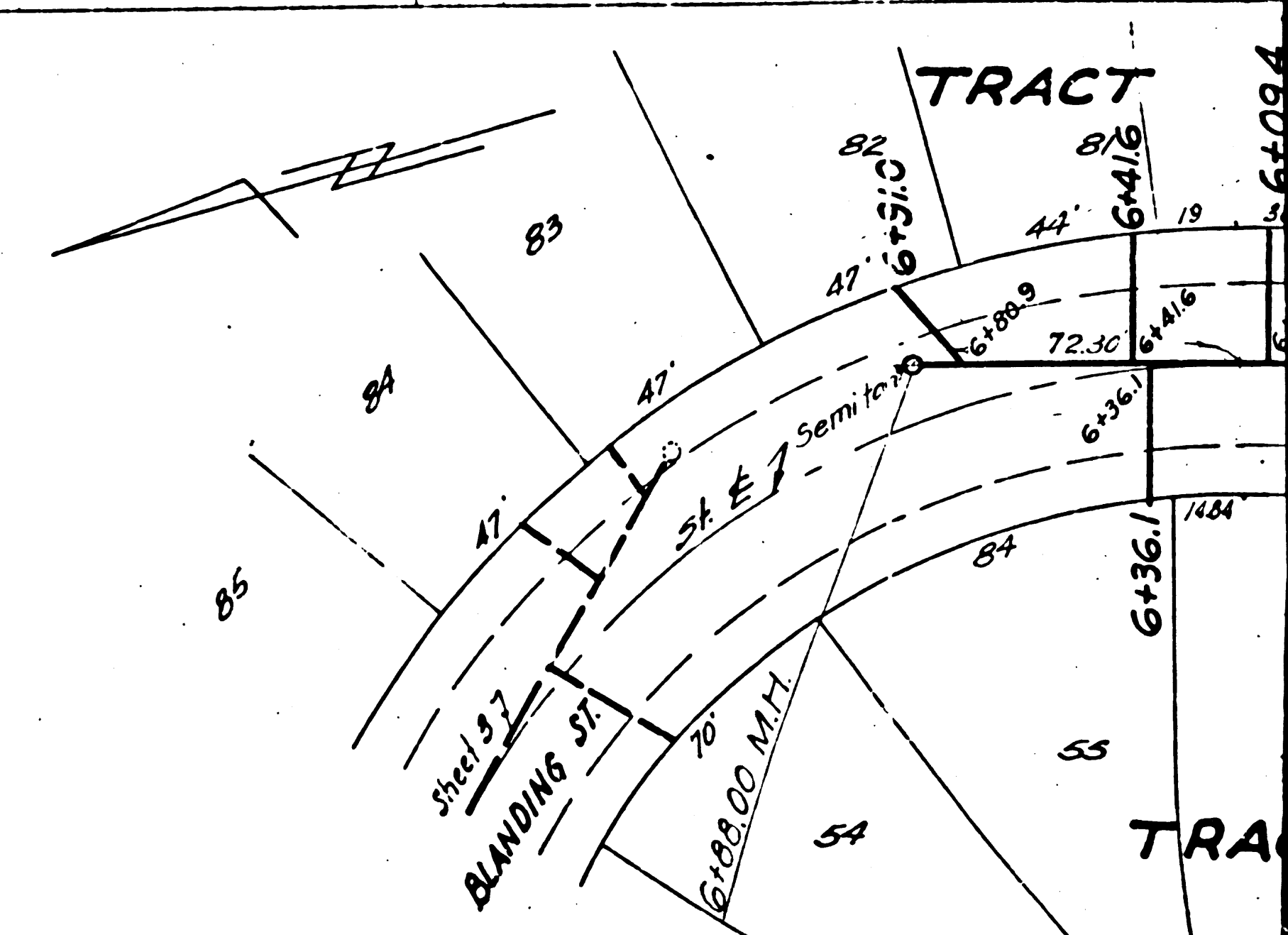
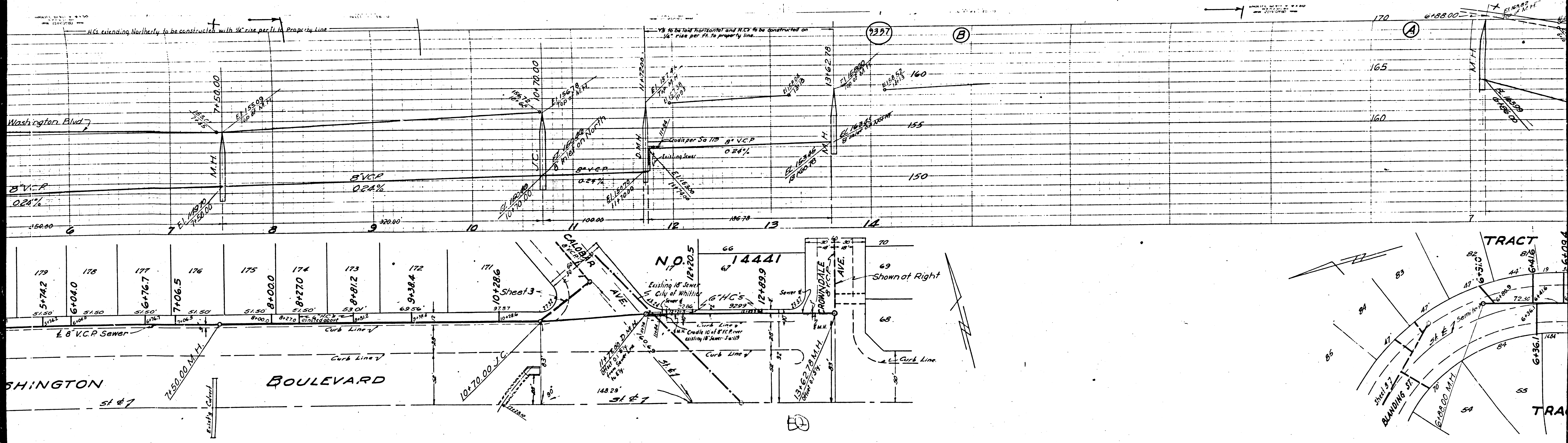
APPROVED *J. B. Moore*  
 REGISTERED PROFESSIONAL CIVIL ENGINEER & SURVEYOR (DISTRICT NO. 1)

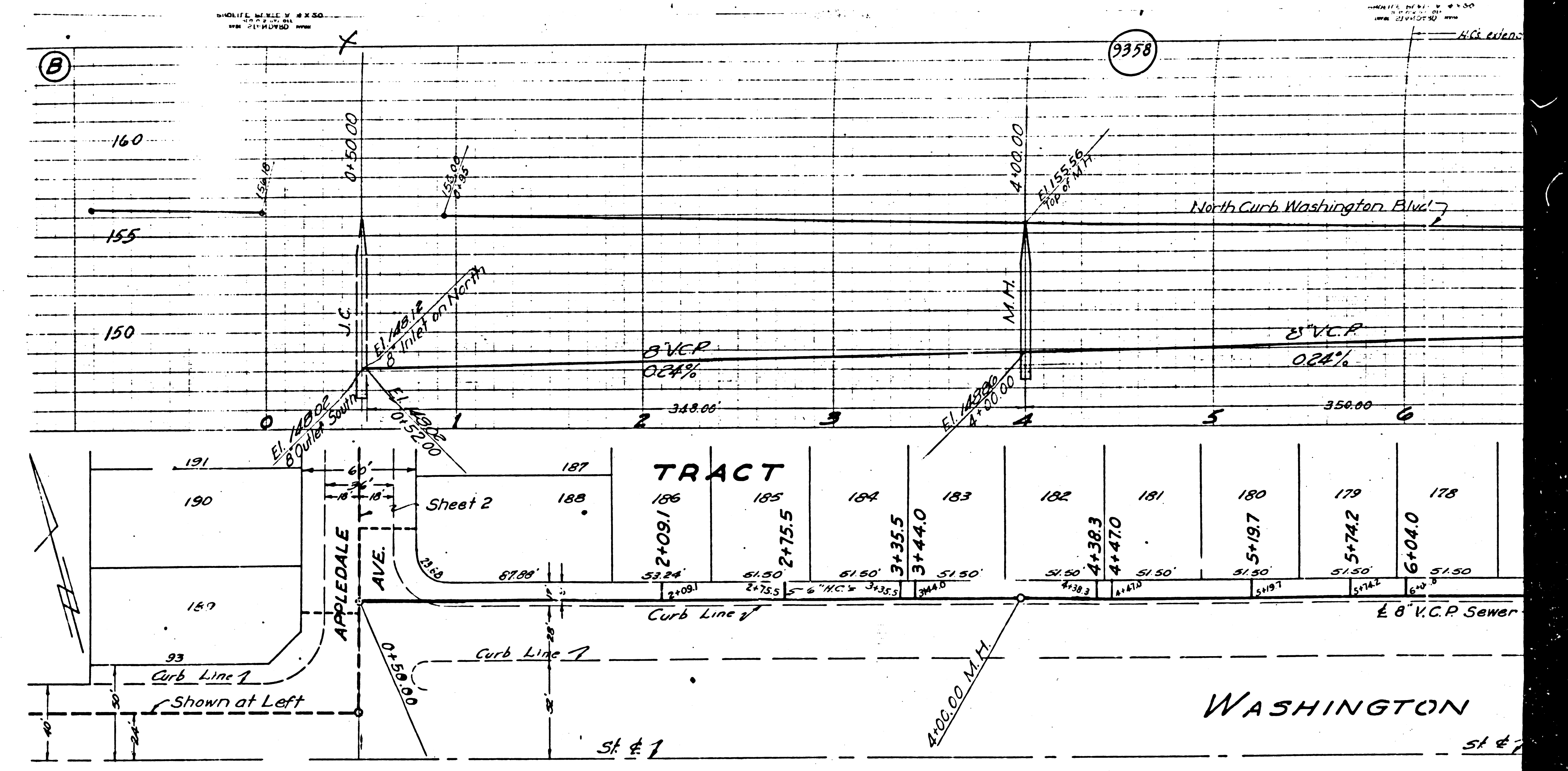
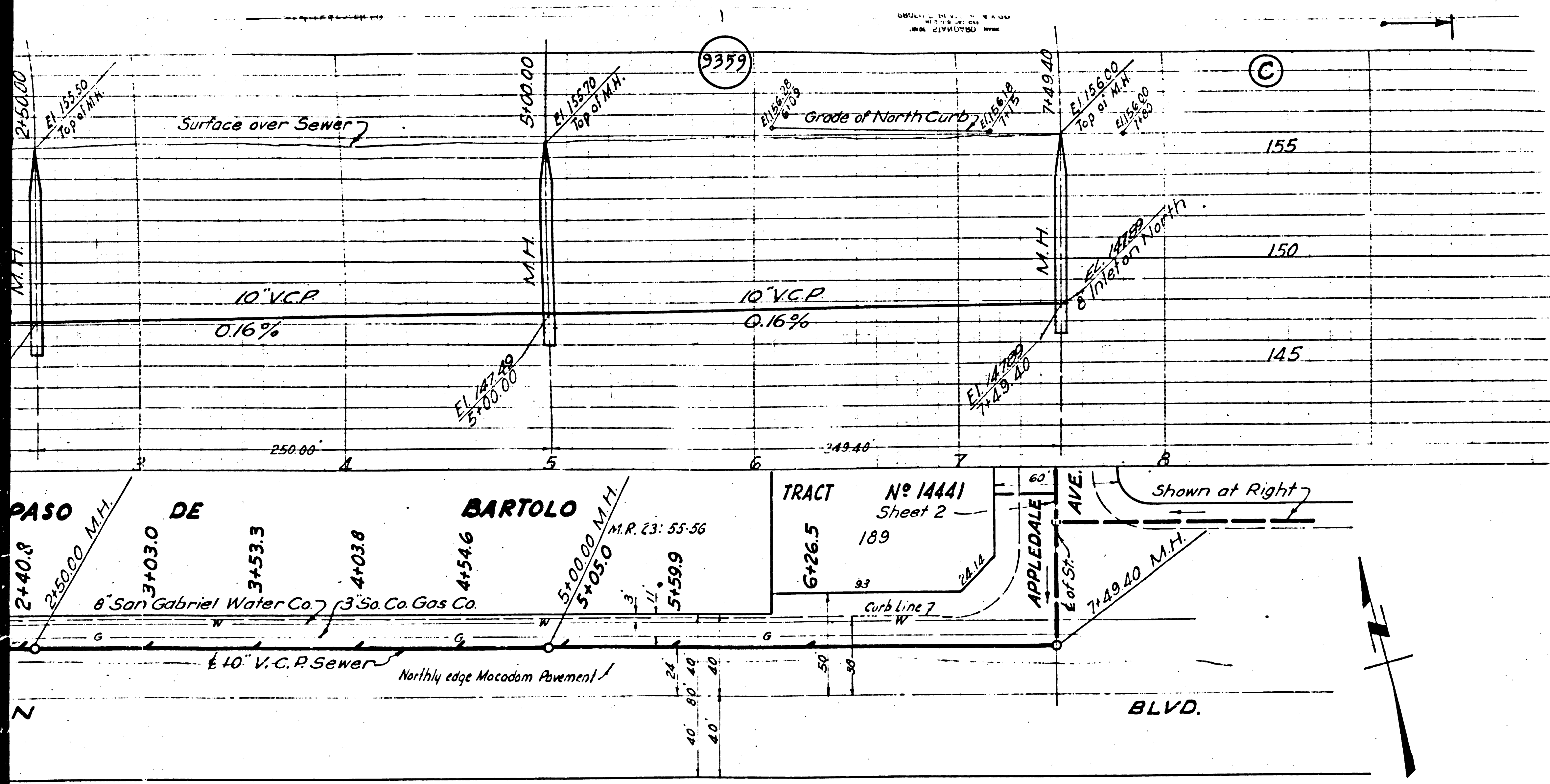
CHECKED BY *Walter C. Wilcox*  
 OFFICE OF COUNTY ENGINEER, REG. C. E. NO. 3016

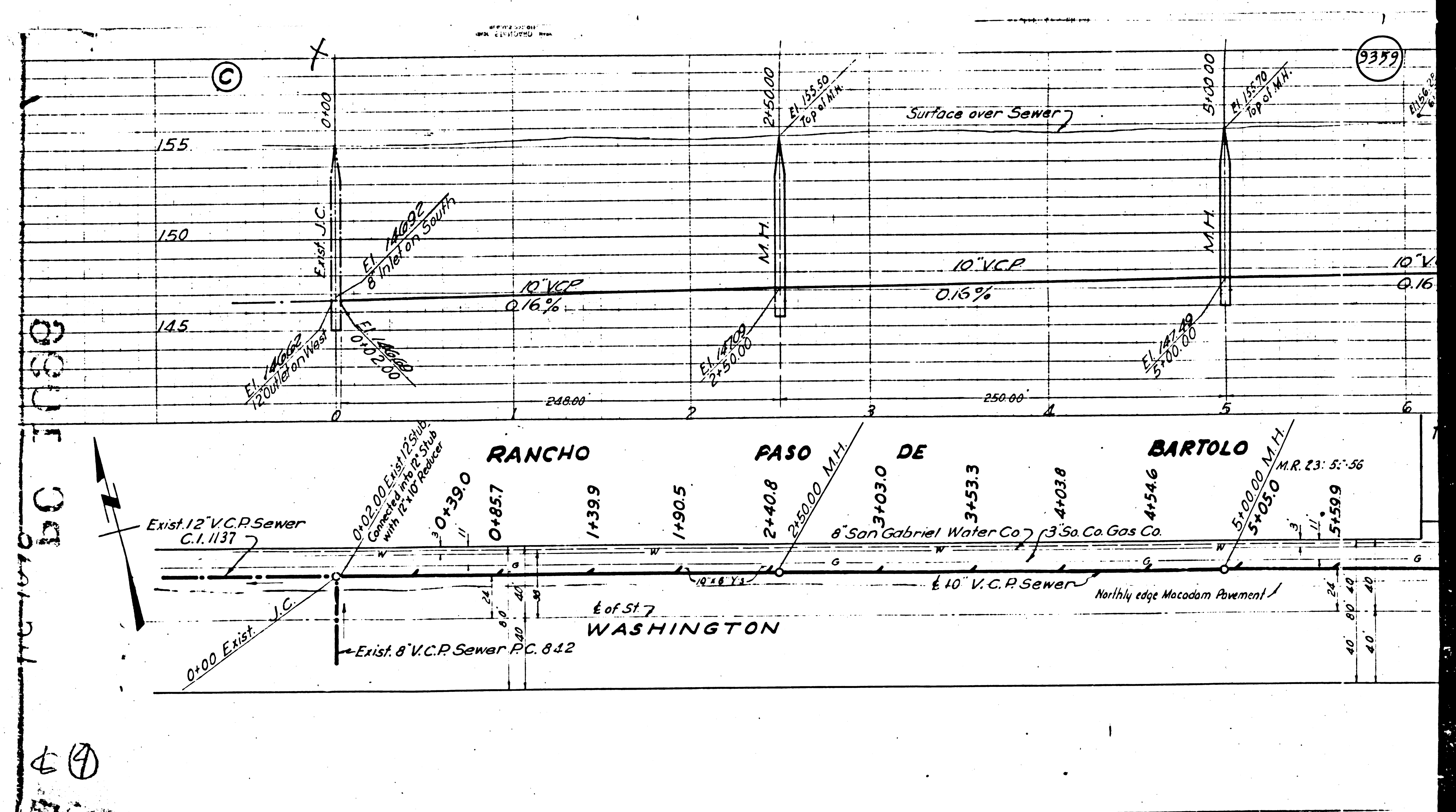


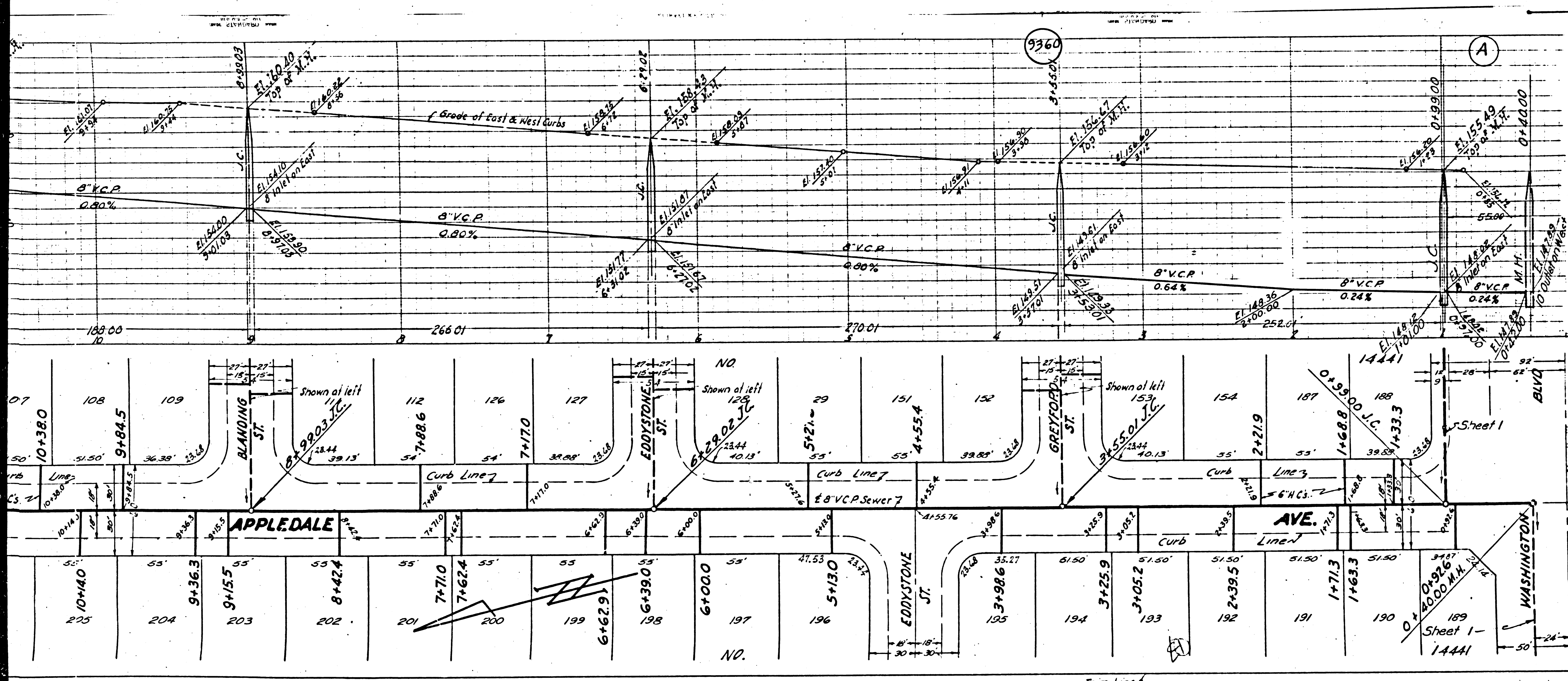
PC 1096 (JN 3179)  
 INDEX MAP  
 SCALE 1" = 500'

Revised 7-6-49  
 REVISION CHECKED 7-7-49  
 BY: *J. B. Moore*  
 REG. 6322









PROFILE ALIGNMENT AND GRADE OF  
**SANITARY SEWERS**  
 TO BE CONSTRUCTED IN  
**APPLEDALE AVENUE**  
**GREYFORD STREET**  
**EDDYSTONE STREET**  
**BLANDING STREET**

PRIVATE CONTRACT NO. 1096  
 W.S. 37

VERT. 1"=4'  
 HORIZ. 1"=40'

**SHEET 2 OF 3 SHEETS**  
 PREPARED IN THE OFFICE OF  
**KEMMERER ENG. CO.**

Revised July 1949  
 Revision Checked: J. J. Moore 7/1/49

BY *[Signature]* RE 27E

**FOR CONSTRUCTION NOTES  
 SEE SHEET 1**

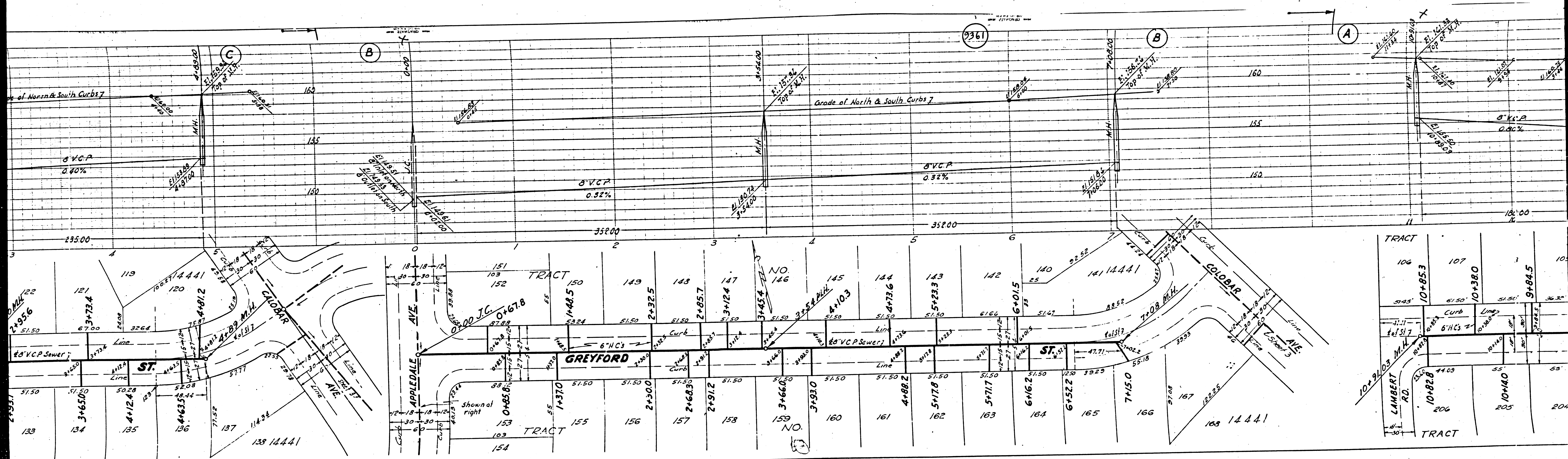
COUNTY OF LOS ANGELES, CALIFORNIA

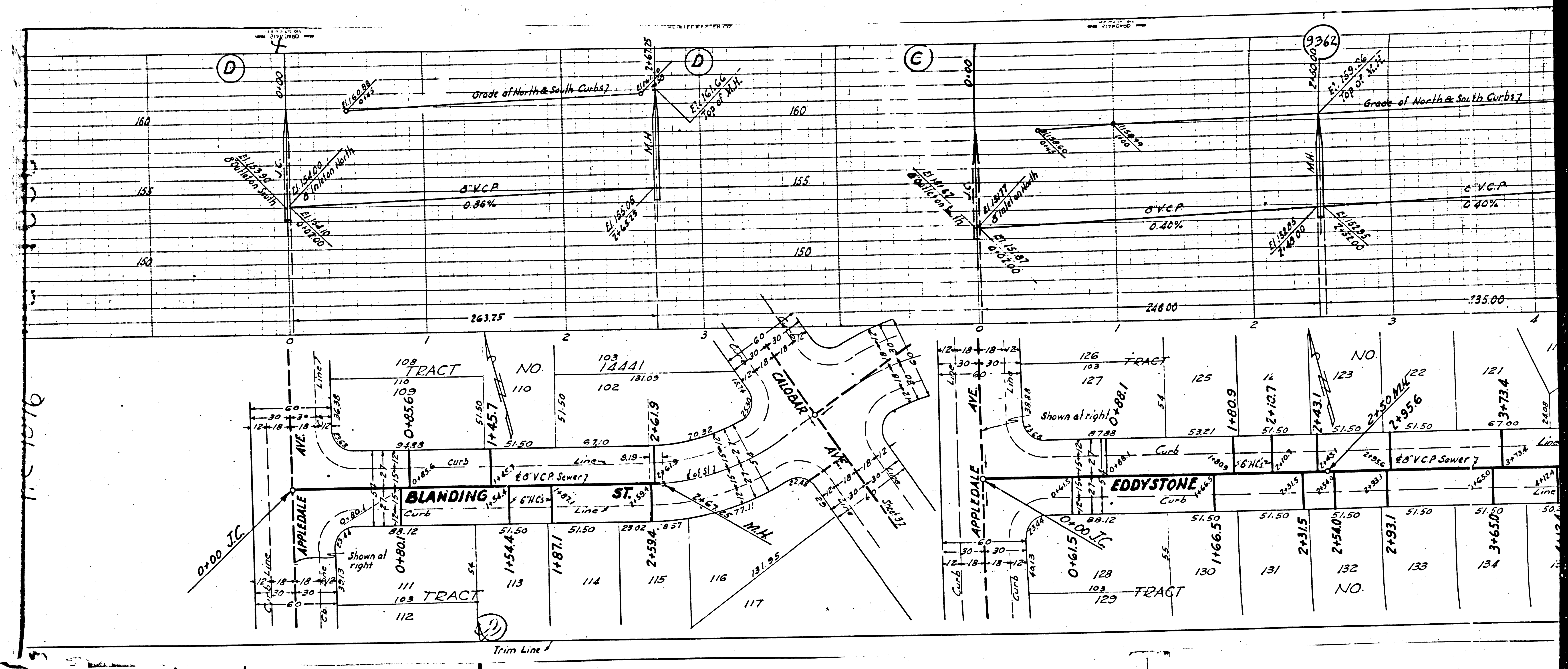
APPROVED *[Signature]*  
 COUNTY ENGINEER

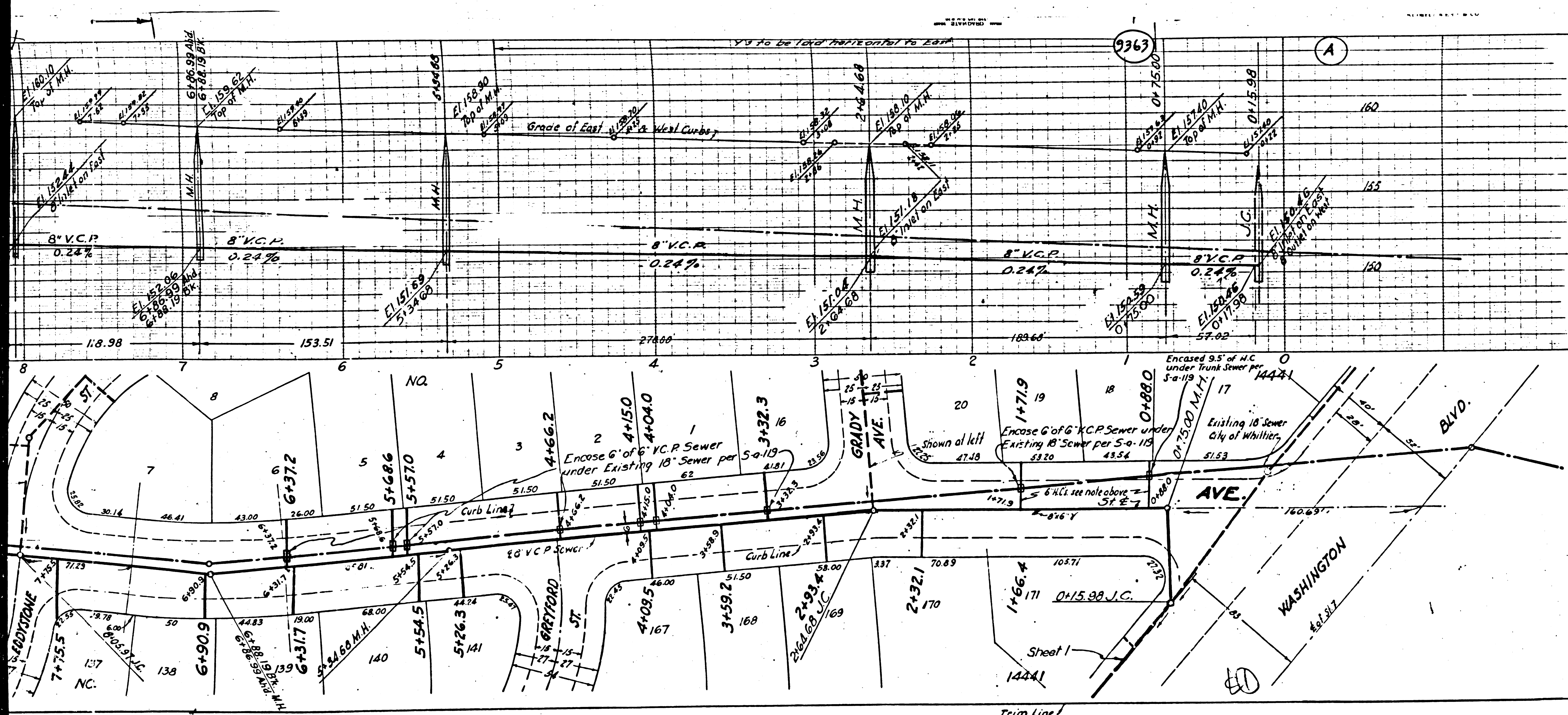
APPROVED *[Signature]*  
 FOR ACTING CHIEF ENGINEER OF COUNTY  
 SANITATION DISTRICT NO. 2

CHECKED BY *[Signature]*  
 Office of County Engineer, R.E. 3105

129







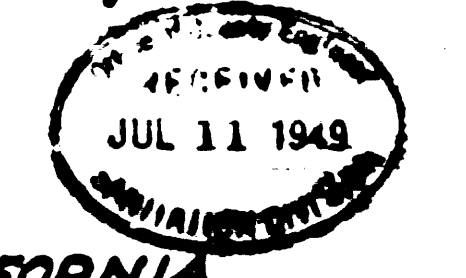
PROFILE ALIGNMENT AND GRADE OF  
**SANITARY SEWERS** ③  
 TO BE CONSTRUCTED IN  
**CALOBAR STREET**  
**GRADY AVENUE**  
**EDDYSTONE STREET**  
**BLANDING STREET**

PRIVATE CONTRACT NO. 1096  
 W.S.37  
 SHEET 3 OF 3 SHEETS  
 PREPARED IN THE OFFICE OF  
**KEMMERER ENG. CO.**

BY *John M. Kemmerer* R.E. 272

Revised July 7, 1949  
 Revision Checked: T-7-49  
 J.G.N. RE 6322

FOR CONSTRUCTION NOTES  
 SEE SHEET 1



COUNTY OF LOS ANGELES, CALIFORNIA  
 APPROVED *John M. Kemmerer* COUNTY ENGINEER  
 APPROVED *W.S. 37* OFFICE ENGINEER  
 FOR ACTING CHIEF ENGINEER OF COUNTY  
 SANITATION DISTRICT NO. 2  
 CHECKED BY *Nathaniel W. ...* 6-30-49  
 Office of County Engineer, R.E. 3205



