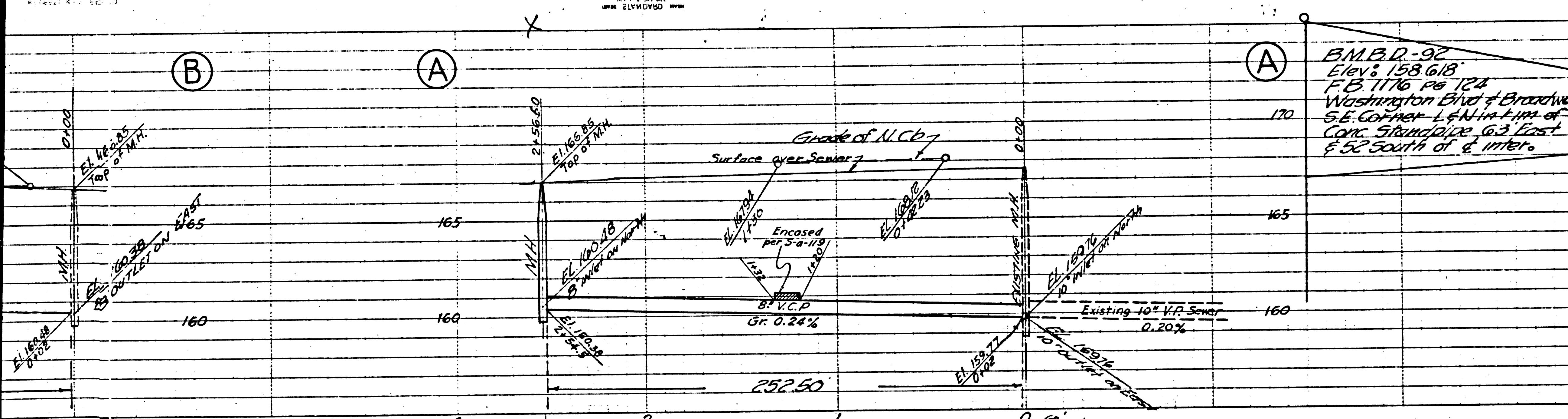
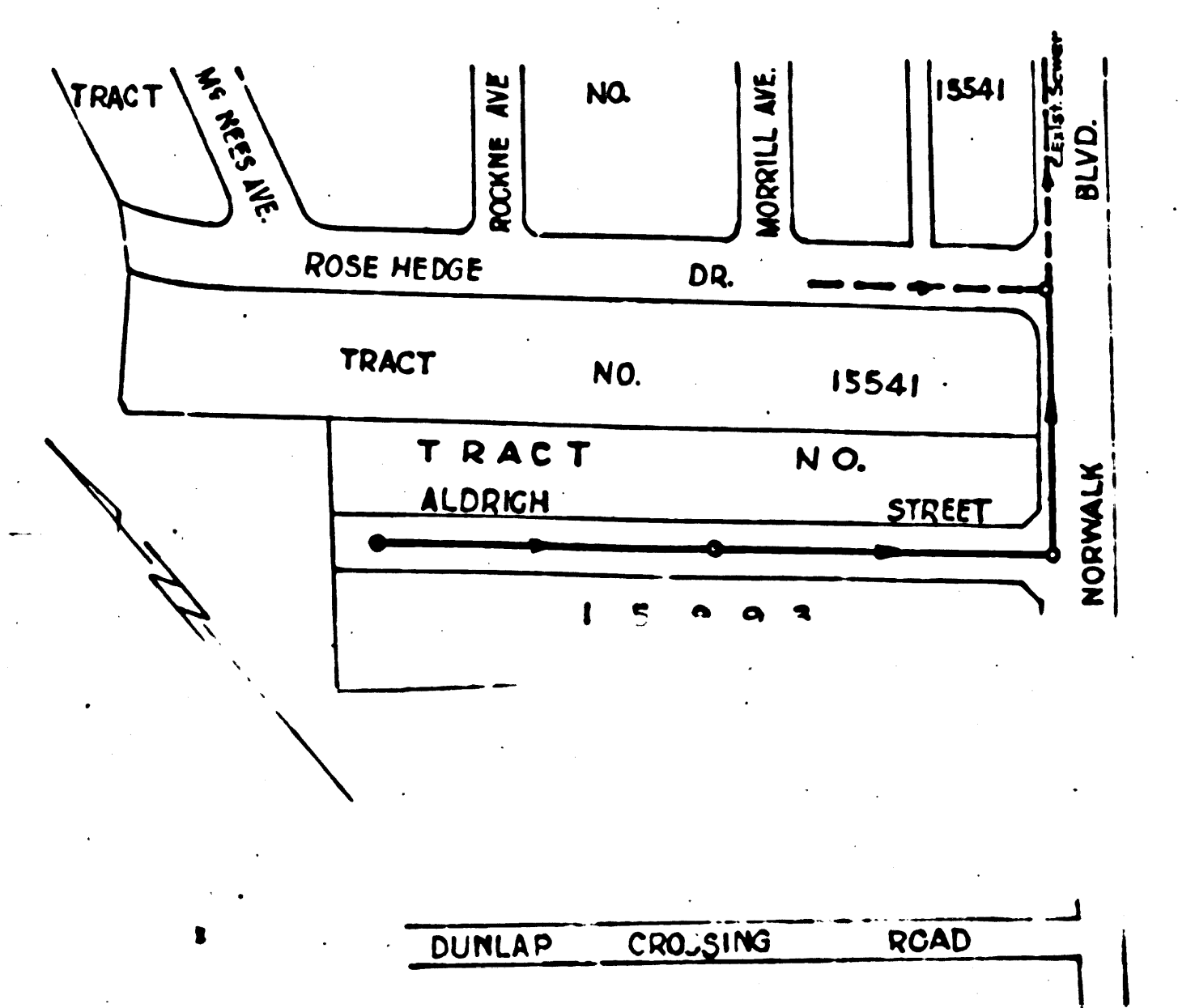
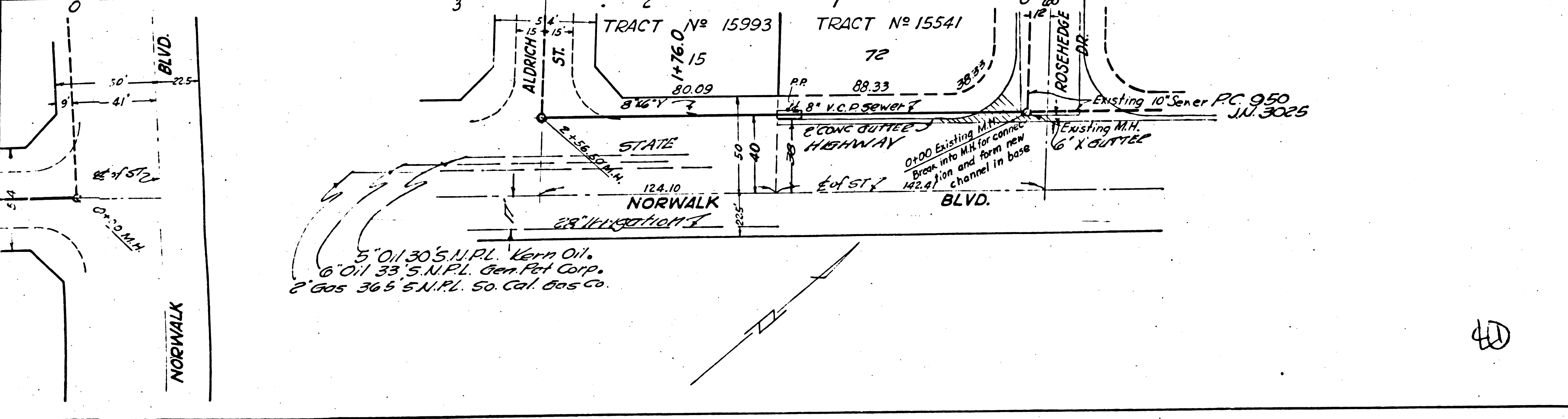


ON MILITARY SURVEY SYSTEM
 U.S. GEOLOGICAL SURVEY
 WASHINGTON, D. C. 20540



9270	USE STANDARD STRENGTH PIPE
	USE CEMENT MORTAR FOR ALL VITRIFIED CLAY PIPE JOINTS
	ENCASE FOUR FEET OF SEWER AT POINTS OF INTERFERENCE WITH POLES AS PER S-1119
	CONSTRUCT HOUSE CONNECTIONS WITH INVERT AT CURB LINE 1 FEET BELOW CURB GRADE
	ALL STRUCTURES SHALL BE BRICK SEWER STRUCTURES AS PER PLAN NO. S-1104
	USE STANDARD MANHOLE FRAMES AND COVERS AS PER PLAN NO. S-1117
	RESURFACE ALL TRENCHES WITHIN PAVED AREA TO MEET LOS ANGELES COUNTY ROAD DEPT. OR STATE HIGHWAY REQUIREMENTS
	NO REVISIONS SHALL BE MADE IN THESE PLANS WITHOUT APPROVAL OF THE COUNTY ENGINEER
	NO REPRESENTATIVE OF THE COUNTY ENGINEER WILL SURVEY OR LAY-OUT ANY PORTION OF THE WORK
	THE OWNER OR HIS AUTHORIZED REPRESENTATIVE SHALL FURNISH THE COUNTY ENGINEER WITH GRADE SHEETS AND STATIONS OF ALL HOUSE CONNECTIONS AND Y BRANCHES AND SHALL PROVIDE STAKES FOR THEM AT THEIR PROPER LOCATIONS WITH STATIONING PLAINLY MARKED. ANY CHANGE OF LOCATION SHALL BE REQUESTED IN WRITING BY THE OWNER OR HIS REPRESENTATIVE.



PROFILE ALIGNMENT AND GRADE OF
SANITARY SEWERS
 TO BE CONSTRUCTED IN
 NORWALK BOULEVARD
 BETWEEN ROSE HEDGE DRIVE AND ALDRICH ST.
 AND

ALDRICH STREET
 BETWEEN NORWALK BLVD. AND WESTERLY TRACT LINE
 TRACT 15993
 PRIVATE CONTRACT NO. 1102
 W. S. 37

SHEET 1 OF 1 SHEET
 SCALE: VERT. 1"=4'
 HORIZ. 1"=40'
 July 26th 1949

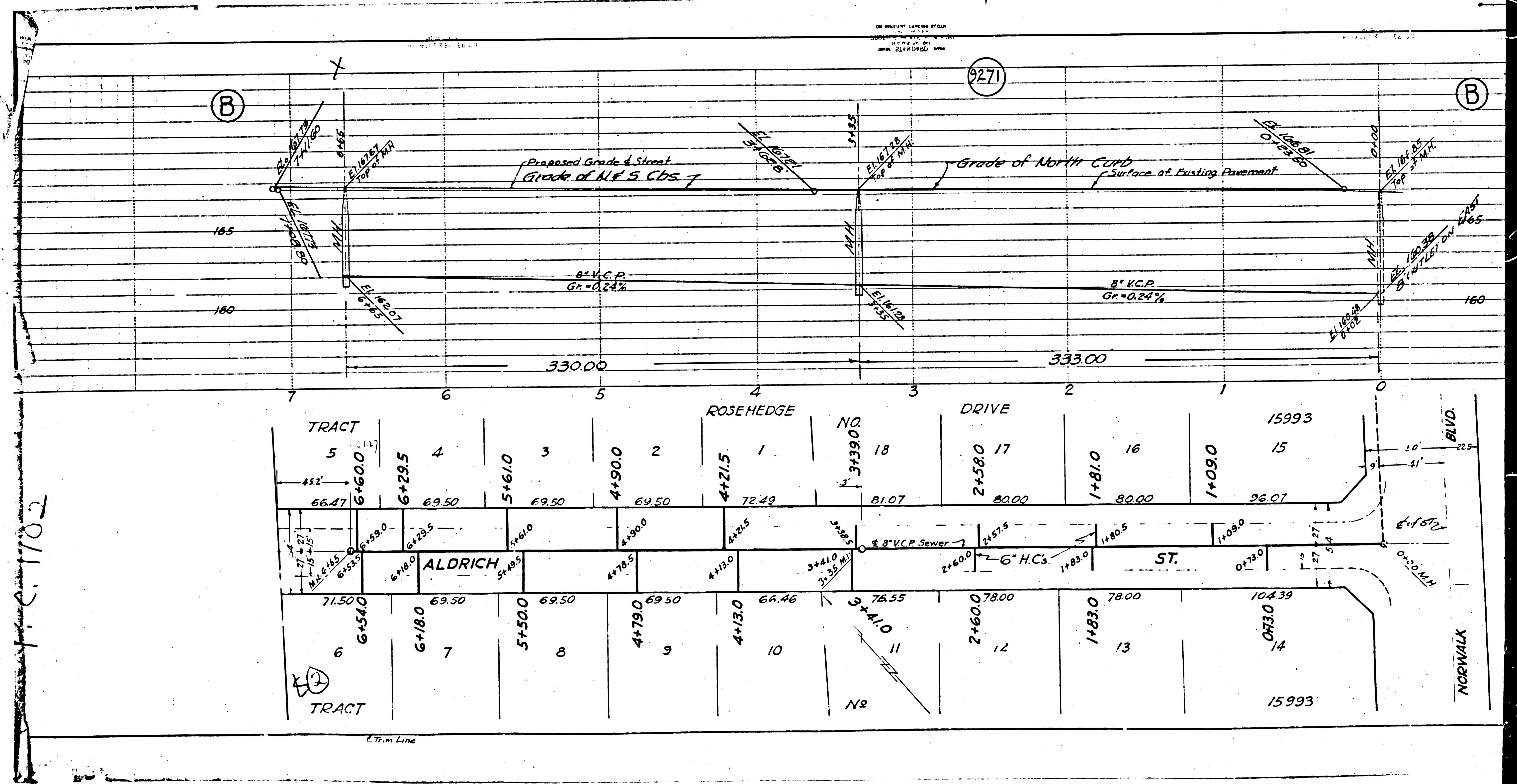
PREPARED IN THE OFFICES OF
KEMMERER ENG. CO.
 BY: *John M. Kemmerer*
 REG. C. E. NO. 272

FOR LEGEND
 SEE PLAN NO. S-1104
 AUG 2 1949

NOTE:
 GRADES TO WHICH THIS IMPROVEMENT IS TO BE CONSTRUCTED ARE SHOWN ON PLANS AS PROPOSED GRADE POINTS FOR TOP OF CURB, CENTER LINE OF STREET OR CENTER LINE OF ALLEY AND SHOWN BY CIRCLES ON PROFILES. AT ALL POINTS BETWEEN DESIGNATED POINTS THE GRADE SHALL BE ESTABLISHED SO AS TO CONFORM TO A STRAIGHT LINE DRAWN BETWEEN SAID DESIGNATED POINTS.
 ELEVATIONS ARE IN FEET ABOVE U. S. G. DATUM OR MEAN SEA LEVEL.
 THIS DRAWING AND THE DATA HEREON ARE HEREBY MADE A PART OF THE SPECIFICATIONS FOR THE WORK. BEFORE WORK CAN BE STARTED, THE CONTRACTOR MUST OBTAIN A PERMIT TO EXCAVATE IN COUNTY STREETS FROM THE L. A. COUNTY ROAD DEPT., 211 BOLMAIN ST., LOS ANGELES AND MAKE A DEPOSIT WITH THE COUNTY ENGINEER, ROOM 830 AT 100 WEST STREET, SUFFICIENT TO COVER THE COST OF CONSTRUCTION INSPECTION AND RECORD PLANS.
 IF WORK IS TO BE DONE IN A STATE HIGHWAY, A PERMIT MUST BE OBTAINED FROM THE STATE OF CALIFORNIA, DIVISION OF HIGHWAYS, 808 STATE BUILDING, AFTER MAKING THE DEPOSIT WITH THE COUNTY ENGINEER.
 COUNTY OF LOS ANGELES, CALIFORNIA

John M. Kemmerer
 COUNTY ENGINEER

CHECKED BY *Walter C. ...*
 OFFICE OF COUNTY ENGINEER



1102