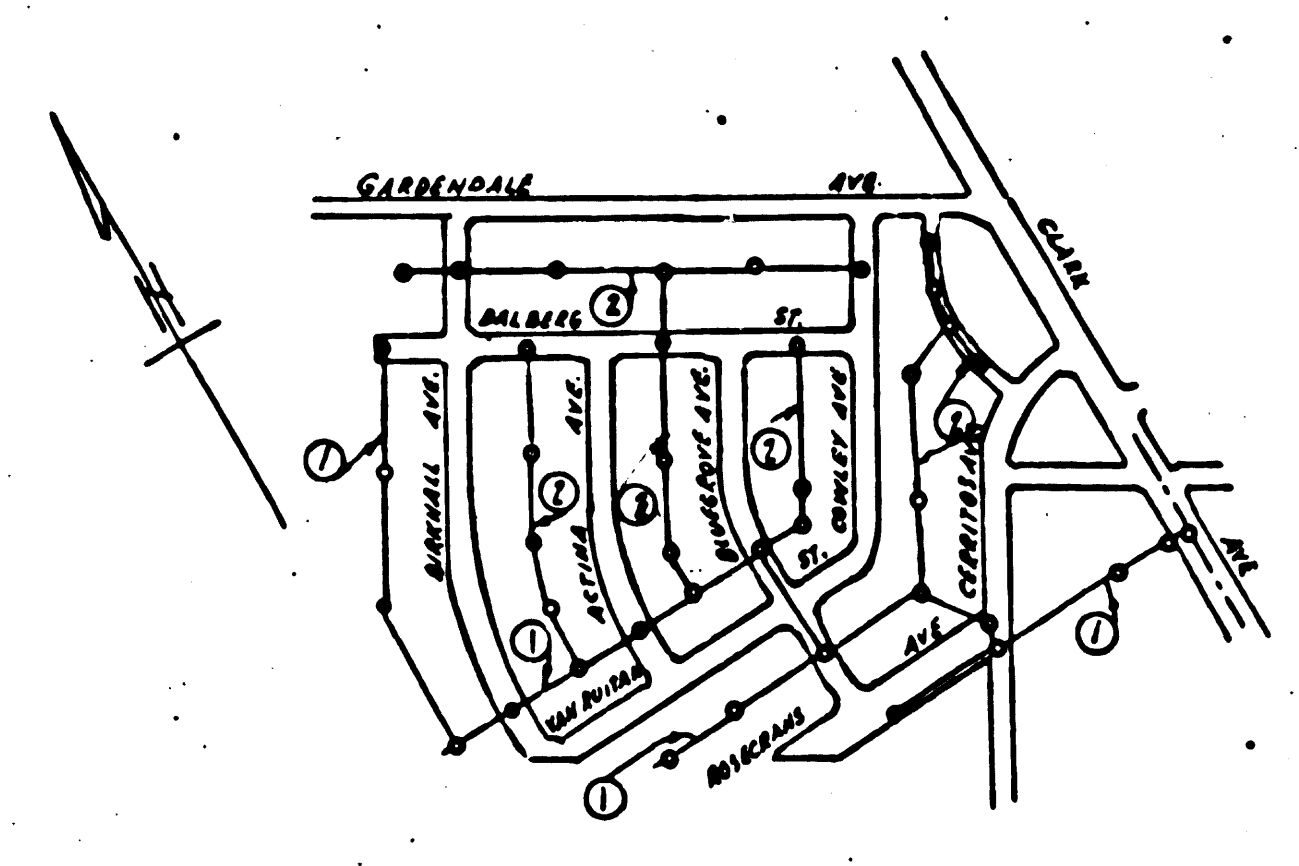
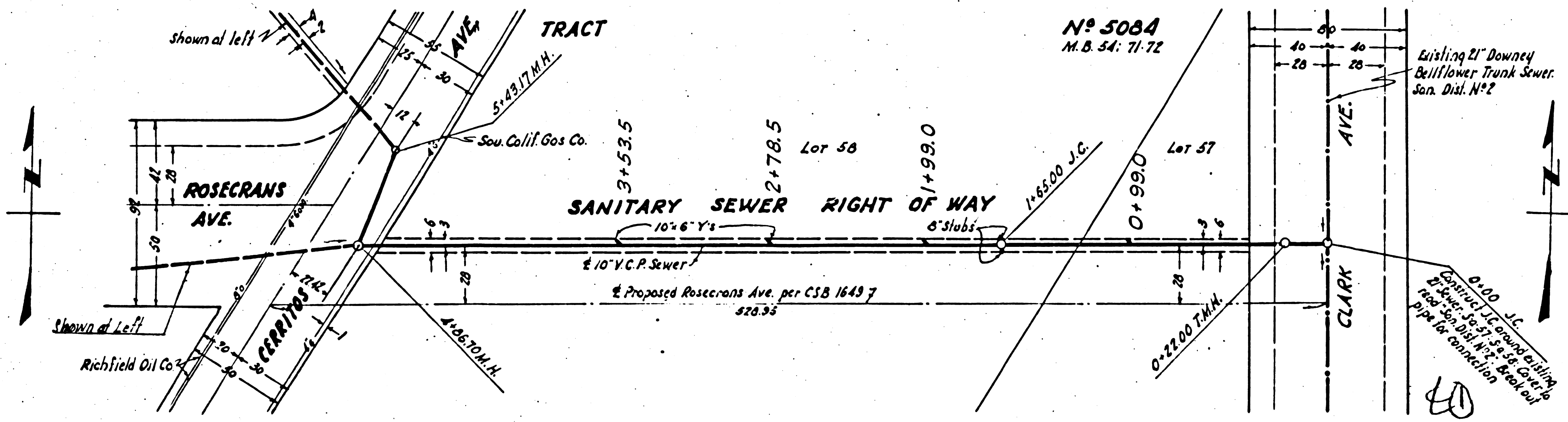


PROFILE ALIGNMENT AND GRADE OF
SANITARY SEWERS
 TO BE CONSTRUCTED IN
BLUEGROVE AVENUE
 BETWEEN SOUTH LINE LOT 144 AND NORTH LINE LOT 122 TRACT NO. 1116
SANITARY SEWER RIGHTS OF WAY
 IN TRACT NO. 5084 AND TRACT NO. 1116
 PRIVATE CONTRACT NO. 1116
 V.S. 83
 SHEET 1 OF 2 SHEETS
 PREPARED IN THE OFFICE OF
 W.M.H. PAIR JR.
 BY *Edmund J. ...*
 6/6/49

USE STANDARD MANHOLE FRAMES AND COVERS S-117
 USE STANDARD STRENGTH PIPE EXCEPT AS NOTED
 USE CEMENT MORTAR FOR ALL VITRIFIED CLAY PIPE JOINTS
 REPAIR ALL TRENCH WITHIN PAVED AREA TO MEET LOS ANGELES COUNTY ROAD DEPT. REQUIREMENTS
 ENCASE FOUR FEET OF SEWER AT POINTS OF INTERFERENCE WITH POLES S-118
 ALL STRUCTURES SHALL BE BRICK SEWER STRUCTURES S-104
 CONSTRUCT TOPS OF ALL STRUCTURES IN RIGHTS OF WAY 6" ABOVE FINISHED GRADE
 JUDICIAL CONNECTIONS IN ALLEY TO BE CONSTRUCTED WITH INVERT AT PROPERTY LINE 4 FEET BELOW GRADE OF CENTER LINE OF ALLEY

Note: No representation of the County Engineer will be made for any and every portion of the work. The owner or his authorized representative shall furnish the County Engineer with grade sheets and stationing of all house connections and branches and shall provide stakes for them at their proper locations with the following markings: Any change of location shall be requested in writing by the owner or his representative. No revision shall be made in these plans without approval of the County Engineer.

Note: Sanitation District must be notified before work can start.



FOR LEGEND
 SEE PLAN NO. 5-4-44

NOTE:
 GRADES TO WHICH THIS IMPROVEMENT IS TO BE CONSTRUCTED ARE SHOWN ON PLANS AND PROFILES.
 GRADE POINTS FOR TOP OF CURB, CENTER LINE OF STREET, OR CENTER LINE OF ALLEY ARE SHOWN BY CIRCLES ON PROFILES AT ALL POINTS BETWEEN DESIGNATED POINTS THE GRADE SHALL BE ESTABLISHED AS TO CURB AND SIDEWALK LINE BETWEEN DESIGNATED POINTS.
 ELEVATIONS ARE IN FEET ABOVE MEAN SEA LEVEL.
 THIS DRAWING AND THE DATA HEREON ARE HEREBY MADE A PART OF THE SPECIFICATIONS AND SHALL BE PROSECUTED ONLY IN THE PRESENCE OF THE COUNTY ENGINEER.
 BEFORE WORK CAN BE STARTED THE CONTRACTOR MUST OBTAIN A PERMIT TO OCCUPY IN COUNTY STREETS FROM THE L.A. COUNTY ROAD DEPT. IN 3 MONTHS AND MAKE A DEPOSIT WITH THE COUNTY ENGINEER, NO. 100-100 ANGELES COUNTY ENGINEERING BLDG., SUFFICIENT TO COVER THE COST OF CONSTRUCTION INSPECTION AND RECORD PLANS.

COUNTY OF LOS ANGELES, CALIFORNIA

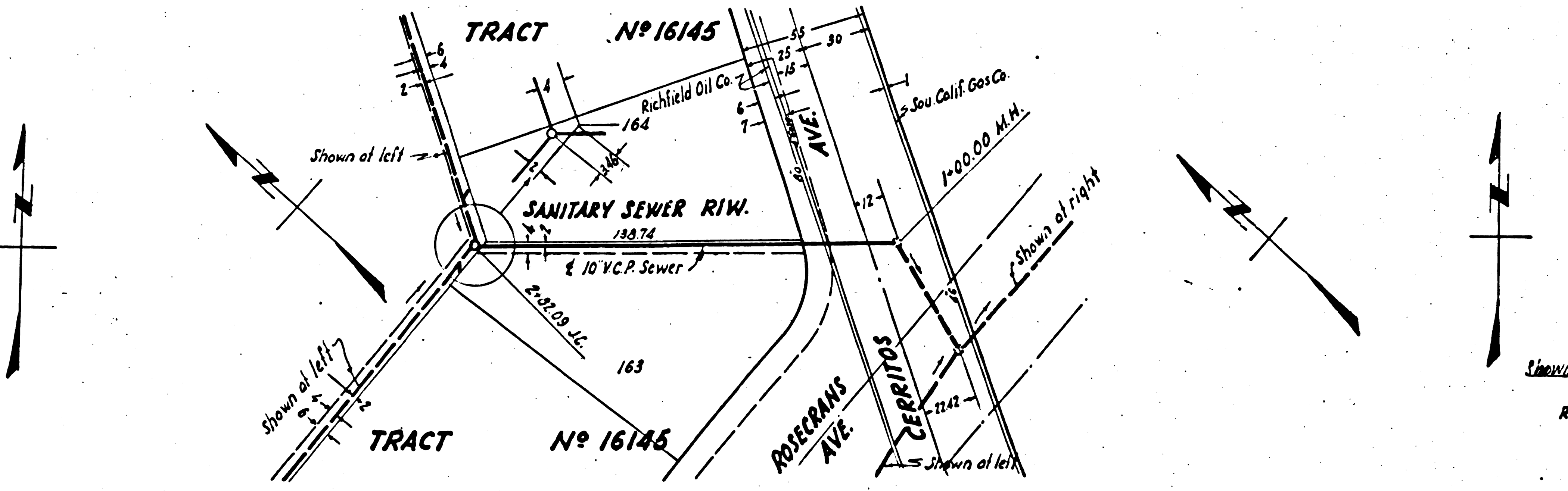
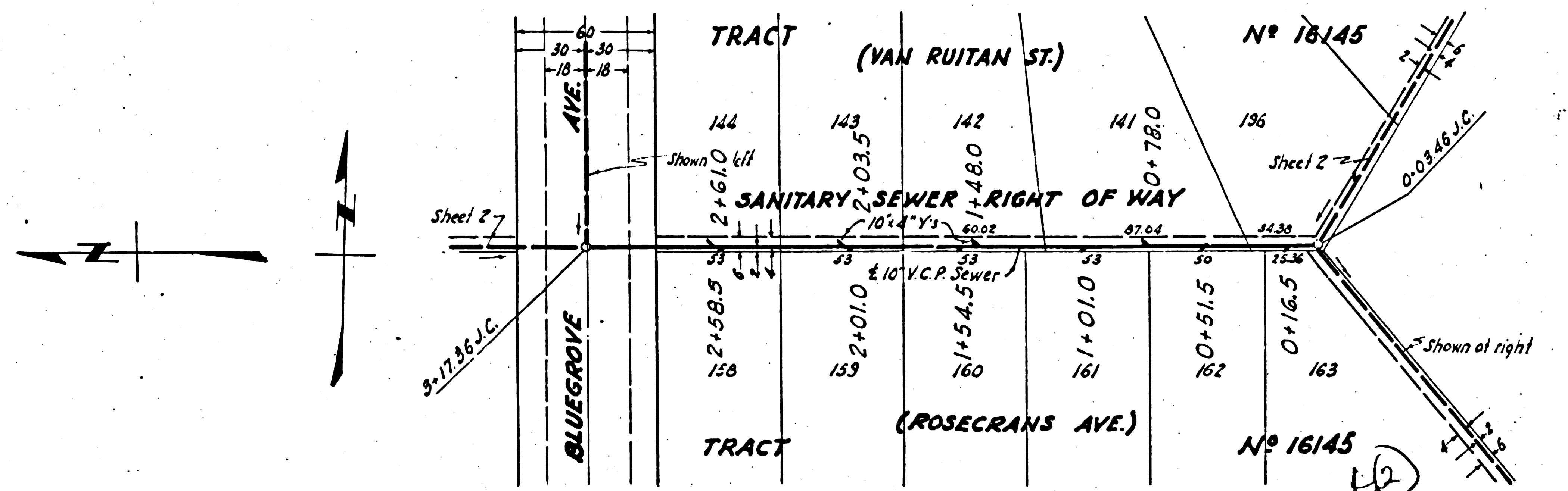
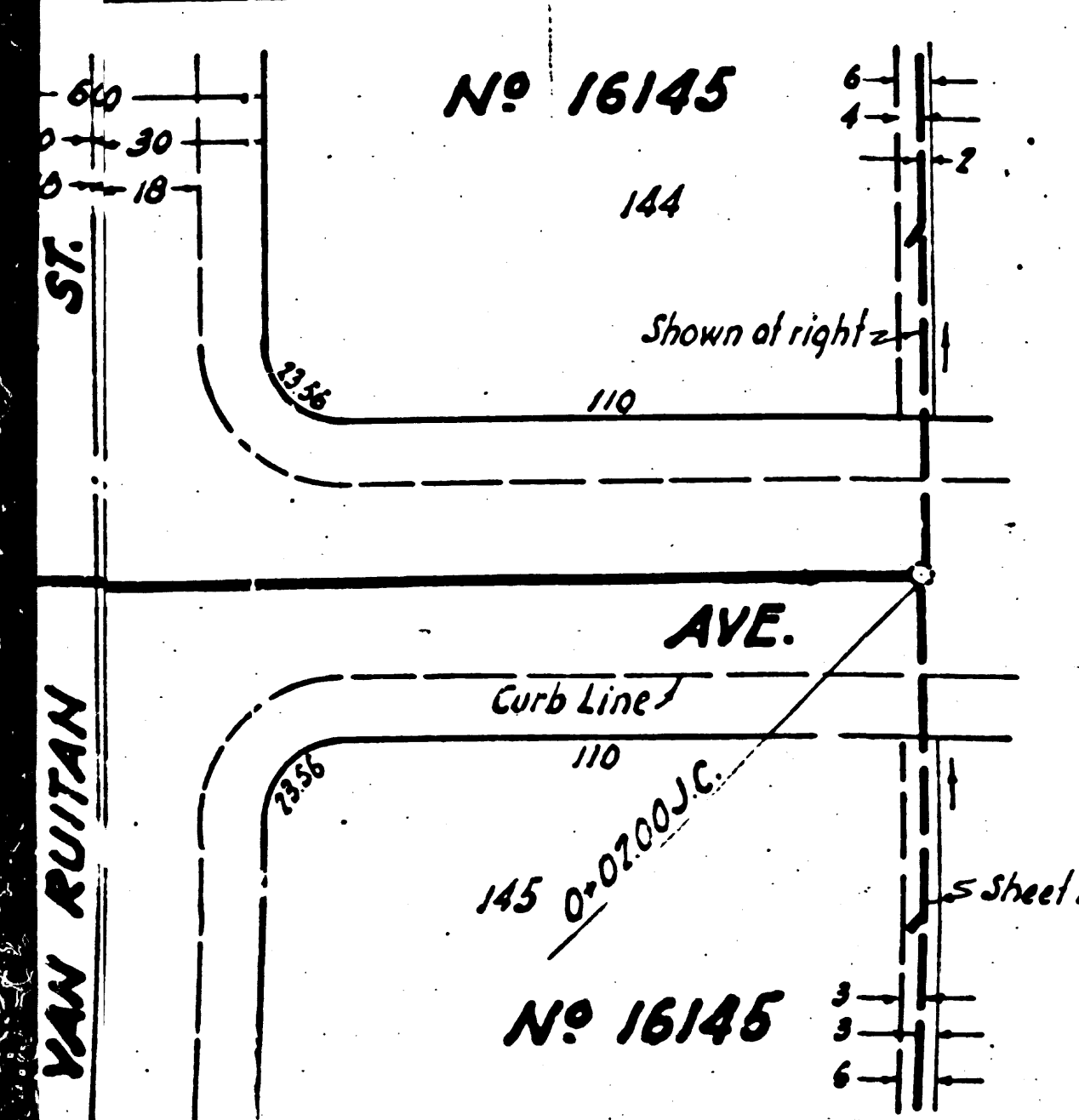
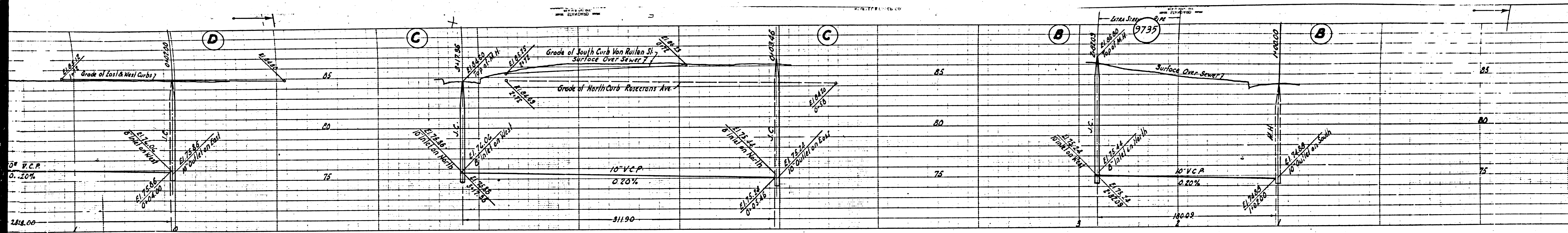
APPROVED *Edmund J. ...*
 COUNTY ENGINEER

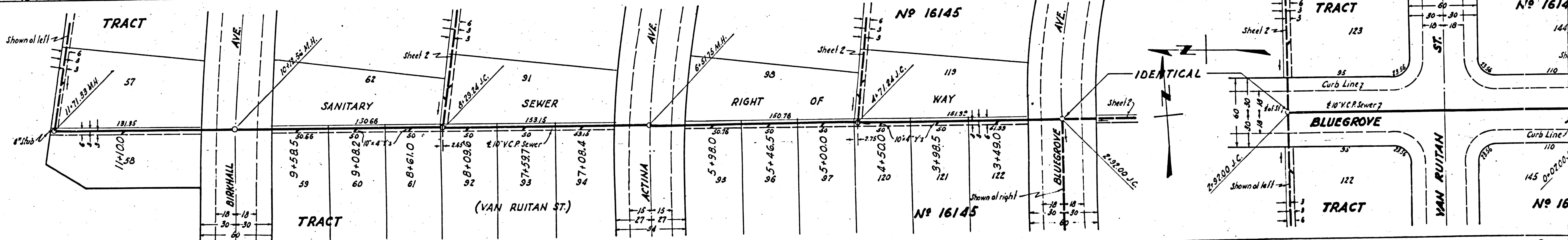
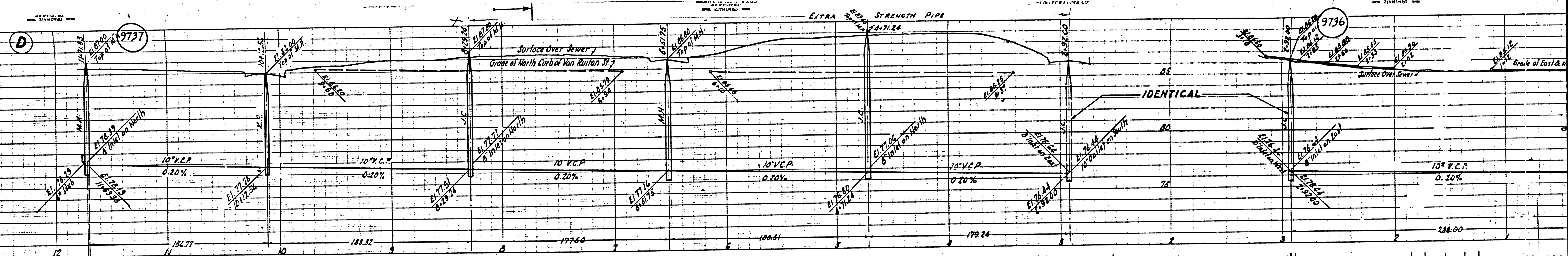
APPROVED *W.M.H. Pair Jr.*
 COUNTY ENGINEER OF COUNTY SANITATION DISTRICT NO. 1

INDEX MAP
 P.C. No. 1116 J.N. 3202
 Scale: 1" = 600'

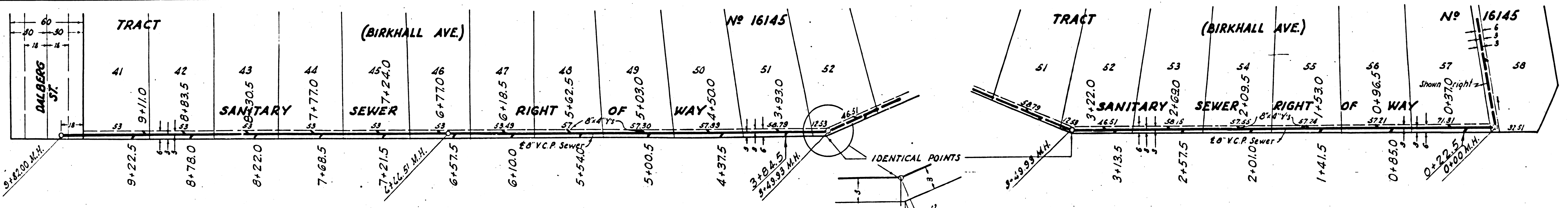
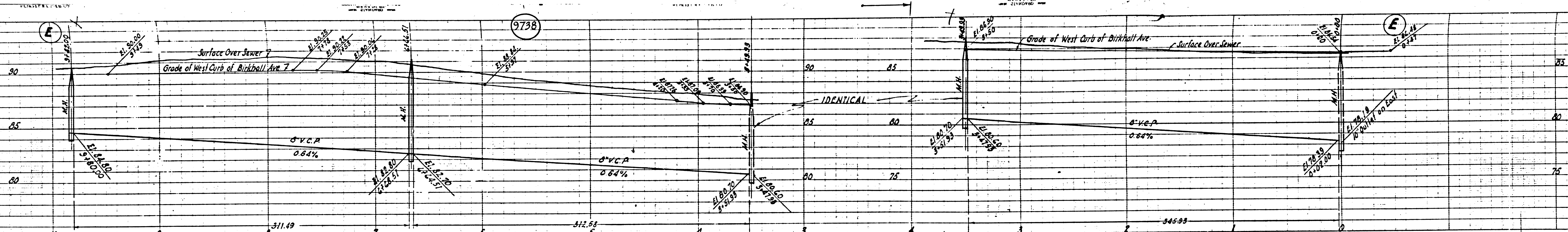
Revised Nov. 1949
 Revision Checked *Edmund J. ...* 11-2-49
 OFFICE OF COUNTY ENGINEER, ROOM 6322

CHECKED BY *Walter C. ...* 1-6-1949
 OFFICE OF COUNTY ENGINEER, ROOM 6322





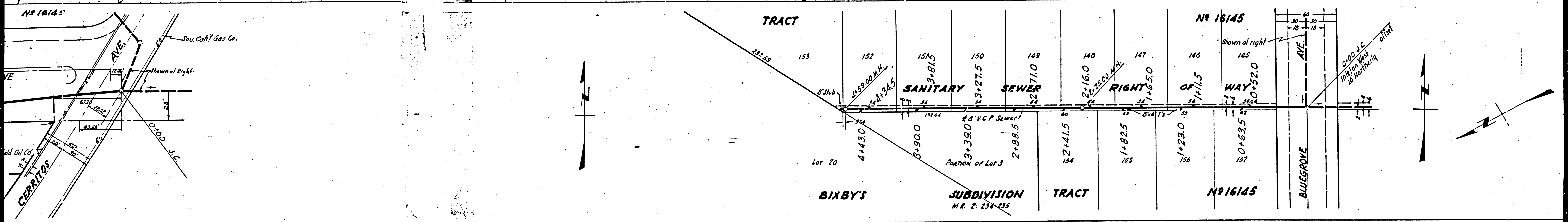
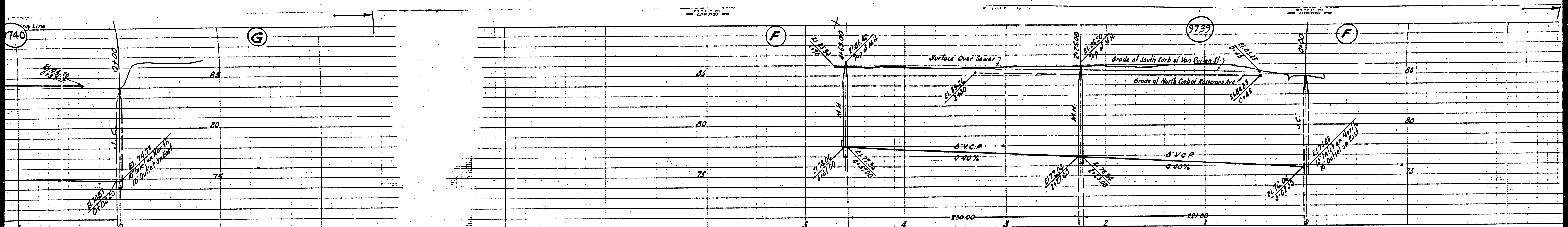
45



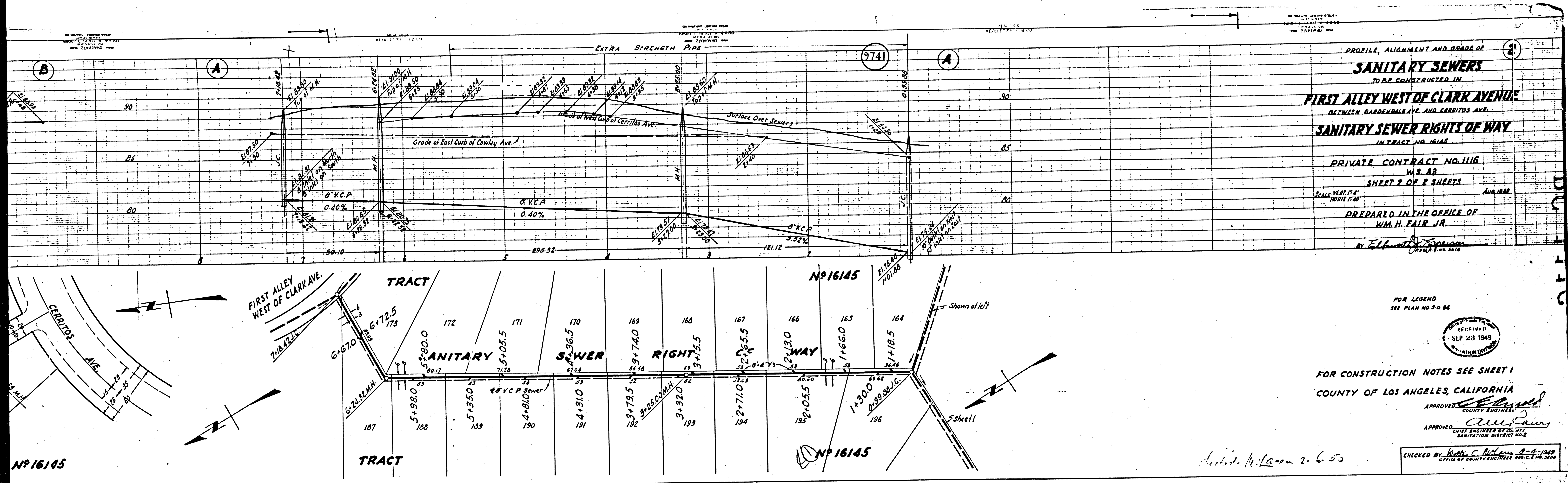
BIXBY'S

SUBDIVISION
M.R. 2: 234-235

99

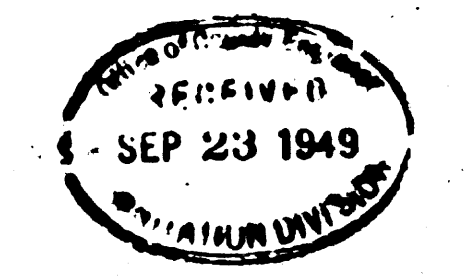


(5)



PROFILE, ALIGNMENT AND GRADE OF
SANITARY SEWERS
 TO BE CONSTRUCTED IN
FIRST ALLEY WEST OF CLARK AVENUE
 BETWEEN GARDENDALE AVE. AND CERRITOS AVE.
SANITARY SEWER RIGHTS OF WAY
 IN PRACT. NO. 16145
 PRIVATE CONTRACT NO. 1116
 W.S. 83
 SHEET 2 OF 2 SHEETS
 SCALE VERT. 1" = 4'
 HORIZ. 1" = 40'
 AUG. 1949
 PREPARED IN THE OFFICE OF
 W.M.H. FAIR, JR.
 BY E.L. ...

FOR LEGEND
SEE PLAN NO. S-6-64



FOR CONSTRUCTION NOTES SEE SHEET 1
 COUNTY OF LOS ANGELES, CALIFORNIA

APPROVED: [Signature]
 COUNTY ENGINEER
 APPROVED: [Signature]
 CHIEF ENGINEER OF COUNTY SANITATION DISTRICT NO. 2

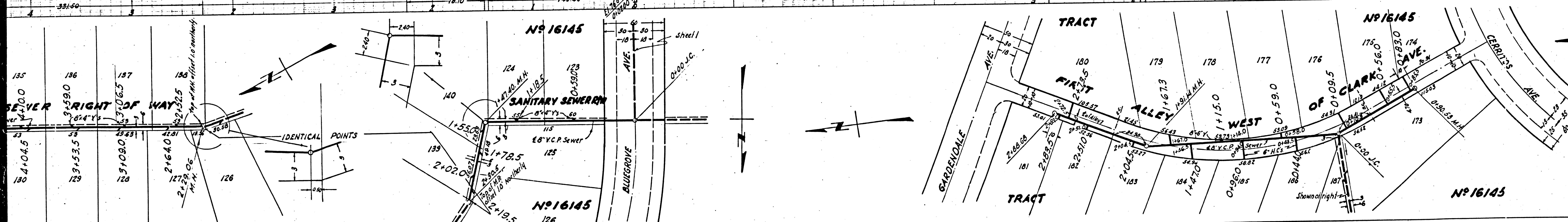
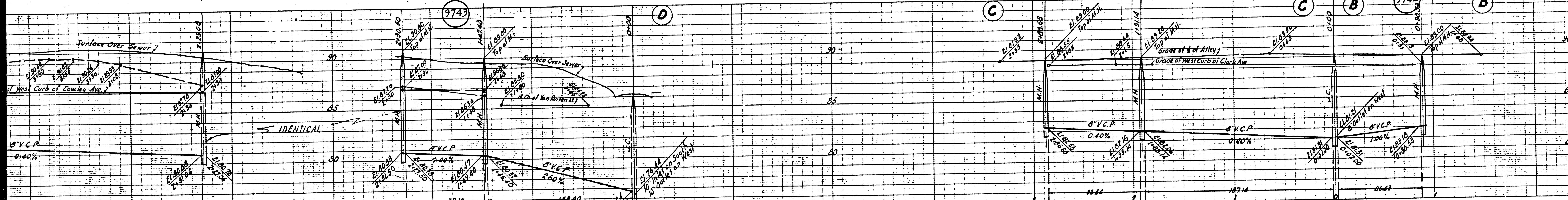
CHECKED BY: [Signature]
 OFFICE OF COUNTY ENGINEER REG. C.E. NO. 2204

Handwritten note: ... 2-6-50

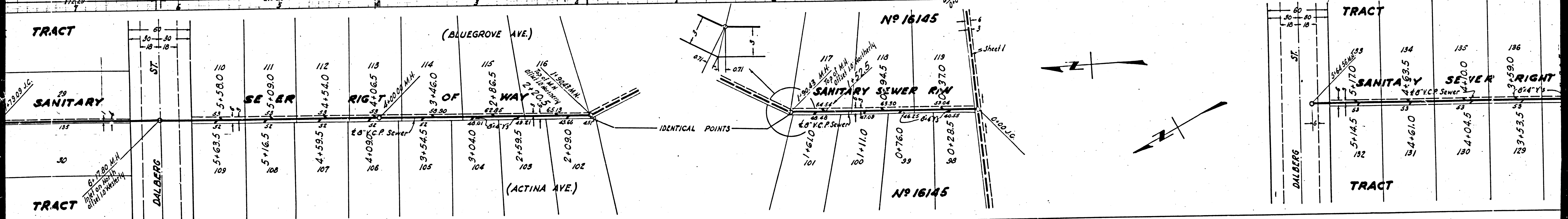
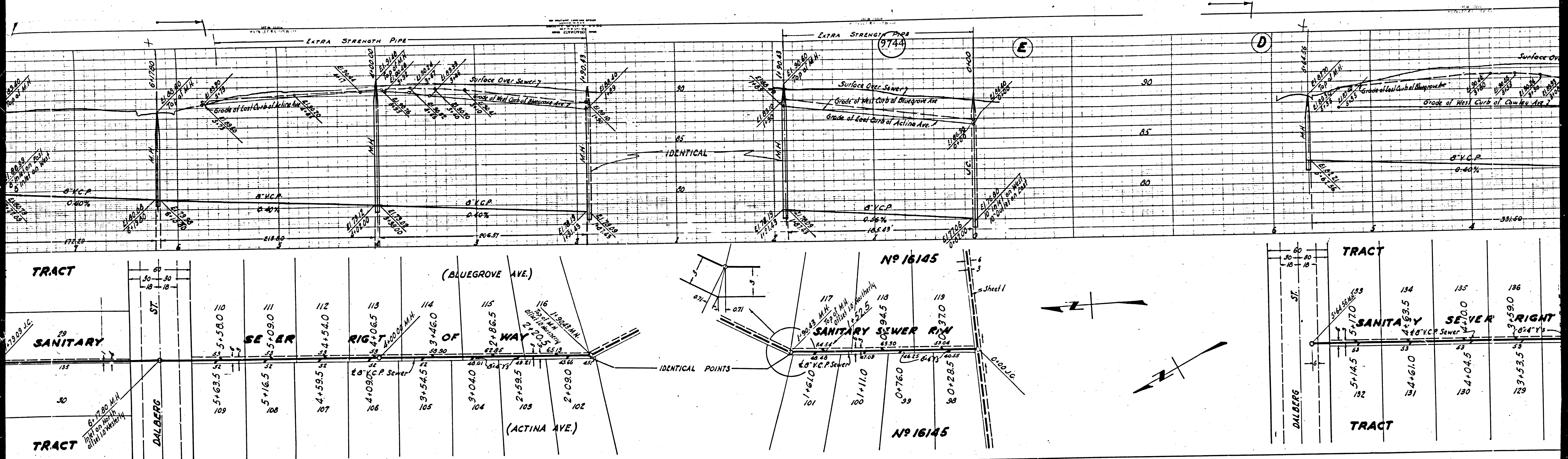
Nº 16145

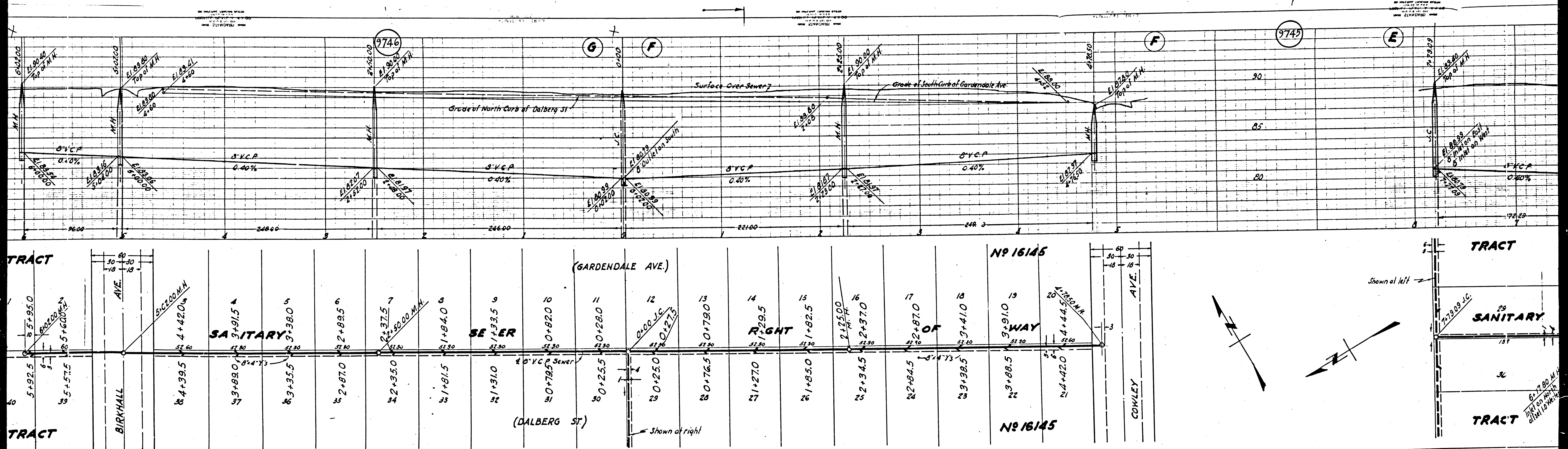
Nº 16145

AS SHOWN, EXCEPT WHERE SHOWN OTHERWISE, ALL DIMENSIONS ARE IN FEET AND INCHES. ALL ANGLES ARE IN DEGREES AND MINUTES. ALL ELEVATIONS ARE IN FEET ABOVE MEAN SEA LEVEL. ALL DISTANCES ARE IN FEET. ALL CURVES ARE TO BE RUN BY THE METHOD OF SIGHTS. ALL GRADES ARE TO BE RUN BY THE METHOD OF SIGHTS. ALL GRADES ARE TO BE RUN BY THE METHOD OF SIGHTS. ALL GRADES ARE TO BE RUN BY THE METHOD OF SIGHTS.

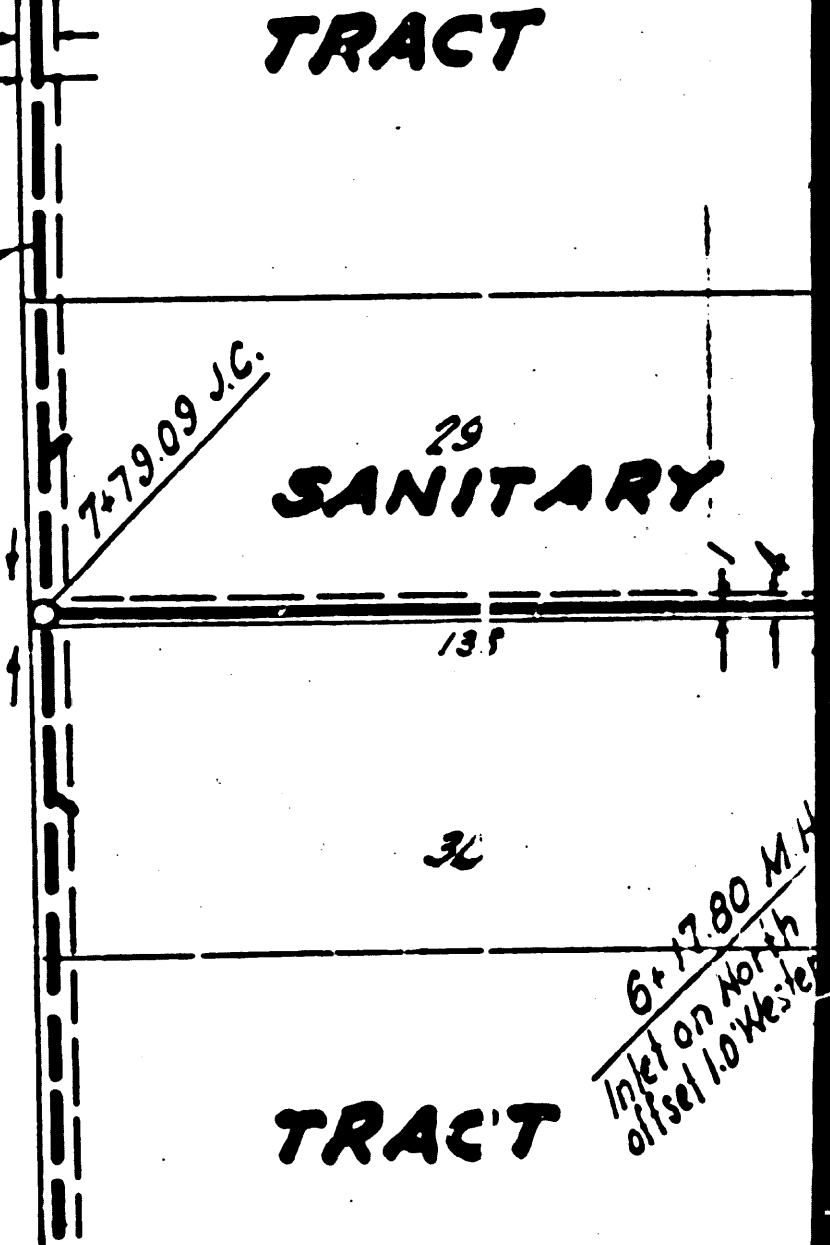
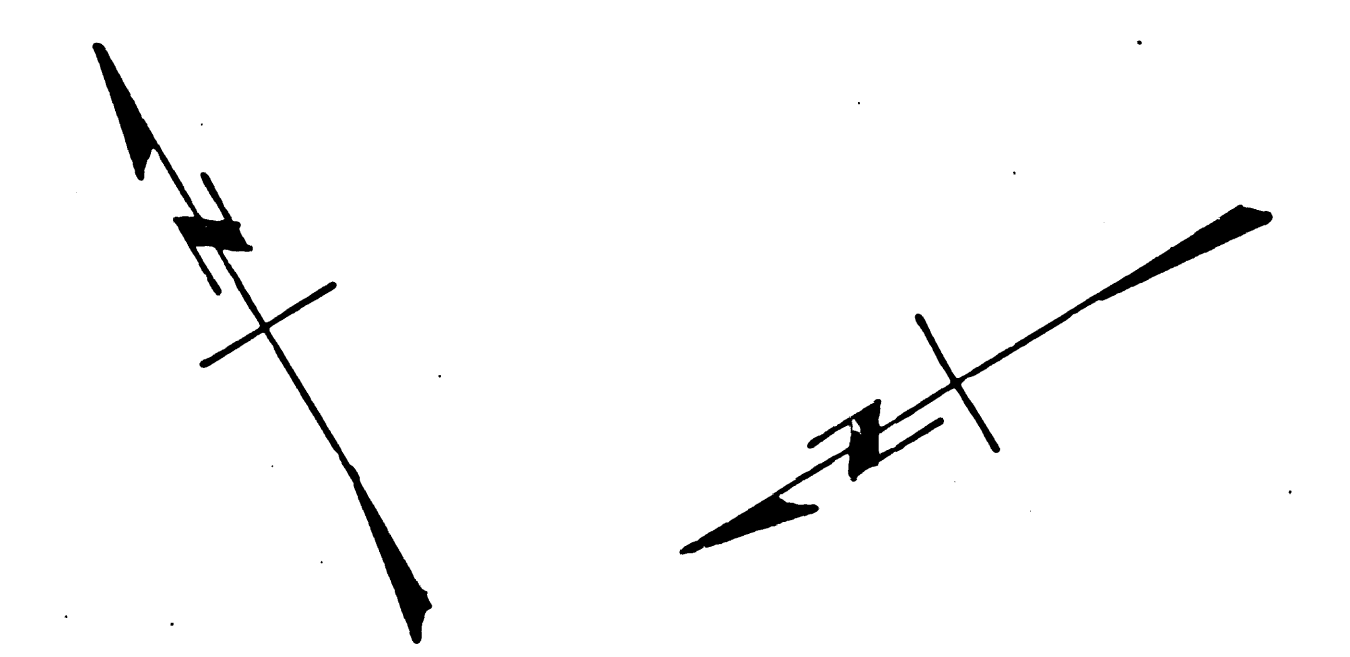


42

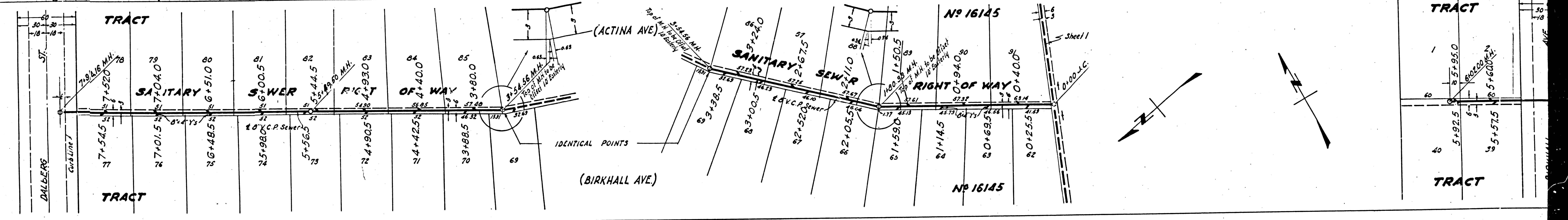
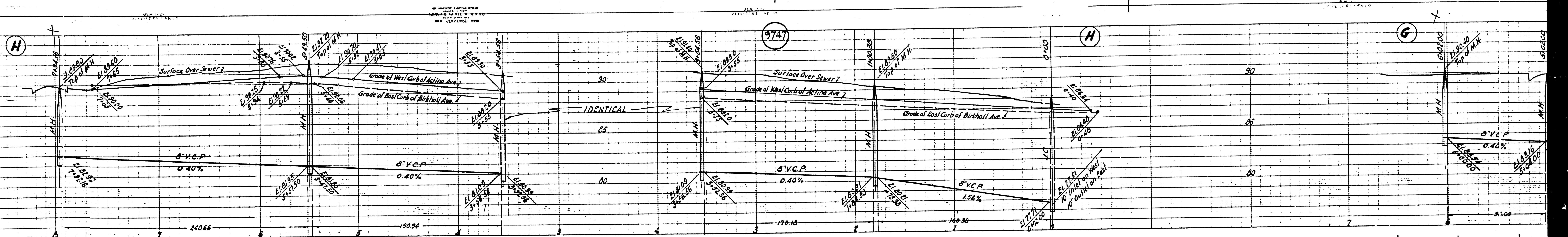




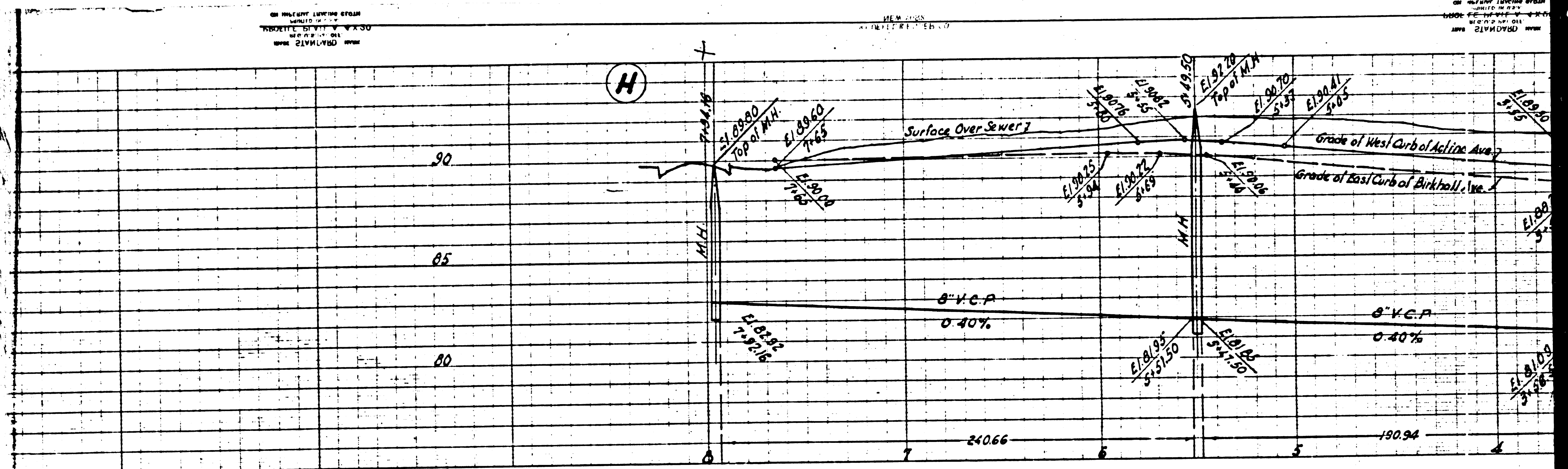
| Station | Manhole | Notes |
|---------|---------|-----------------|
| 5+92.5 | M.H. 1 | 5' V.C.P. 0.40% |
| 8+39.5 | M.H. 2 | 5' V.C.P. 0.40% |
| 9+91.5 | M.H. 3 | 5' V.C.P. 0.40% |
| 11+28.0 | M.H. 4 | 5' V.C.P. 0.40% |
| 12+27.5 | M.H. 5 | 5' V.C.P. 0.40% |
| 13+79.0 | M.H. 6 | 5' V.C.P. 0.40% |
| 14+29.5 | M.H. 7 | 5' V.C.P. 0.40% |
| 15+82.5 | M.H. 8 | 5' V.C.P. 0.40% |
| 16+37.0 | M.H. 9 | 5' V.C.P. 0.40% |
| 17+87.0 | M.H. 10 | 5' V.C.P. 0.40% |
| 18+41.0 | M.H. 11 | 5' V.C.P. 0.40% |
| 19+91.0 | M.H. 12 | 5' V.C.P. 0.40% |
| 20+42.0 | M.H. 13 | 5' V.C.P. 0.40% |



69



65



| ST. | 70 | 71 | 72 | 73 | 74 | 75 | 76 | 77 | 78 | 79 | 80 | 81 | 82 | 83 | 84 | 85 |
|----------------|----|----|----|----|----|----|----|----|----|----|----|----|----|----|----|----|
| TRACT | | | | | | | | | | | | | | | | |
| Sanitary Sewer | | | | | | | | | | | | | | | | |
| Sewer | | | | | | | | | | | | | | | | |
| P.C.T. | | | | | | | | | | | | | | | | |
| OF WAY | | | | | | | | | | | | | | | | |
| TRACT | | | | | | | | | | | | | | | | |
| Sanitary Sewer | | | | | | | | | | | | | | | | |
| Sewer | | | | | | | | | | | | | | | | |
| P.C.T. | | | | | | | | | | | | | | | | |
| OF WAY | | | | | | | | | | | | | | | | |
| TRACT | | | | | | | | | | | | | | | | |
| Sanitary Sewer | | | | | | | | | | | | | | | | |
| Sewer | | | | | | | | | | | | | | | | |
| P.C.T. | | | | | | | | | | | | | | | | |
| OF WAY | | | | | | | | | | | | | | | | |

P.C. 1116
 (6)