

9978

B.M. 47-A Elevation 127.640. Cut Spike on side of RP 6085016 50ft West of & San Pedro St E North Side of 135th St

110

115

120

105

Profile Scale:
Horiz: 1" = 40'
Vert: 1" = 4'

NO REPRESENTATIVE OF THE COUNTY ENGINEER WILL CURVE OR LAY OUT ANY PORTION OF THE WORK. THE ENGINEER HAS NO RESPONSIBILITY FOR THE ACCURACY OF THE LOCATION OF, OR THE EXISTENCE OR NON-EXISTENCE OF, ANY UNDERGROUND UTILITY PIPES OR STRUCTURES WITHIN THE LIMITS OF THIS PROJECT. THE EXISTENCE AND LOCATION OF ANY UNDERGROUND UTILITY PIPES OR STRUCTURES SHOWN ON THESE PLANS ARE SHOWN FOR INFORMATION PURPOSES ONLY AND THE CONTRACTOR SHALL VERIFY THE LOCATION AND DEPTH OF ALL SUCH CONNECTIONS AND UTILITIES AND SHALL PROTECT THEM AT THEIR OWNERS RISK AND RESPONSIBILITY. NO REVISIONS SHALL BE MADE IN THESE PLANS WITHOUT APPROVAL OF THE COUNTY ENGINEER.

PROFILE ALIGNMENT AND GRADE OF
SANITARY SEWERS
TO BE CONSTRUCTED IN
MAIN ST
BETWEEN 135th ST AND 139th ST
IN TRACT NO. 16121

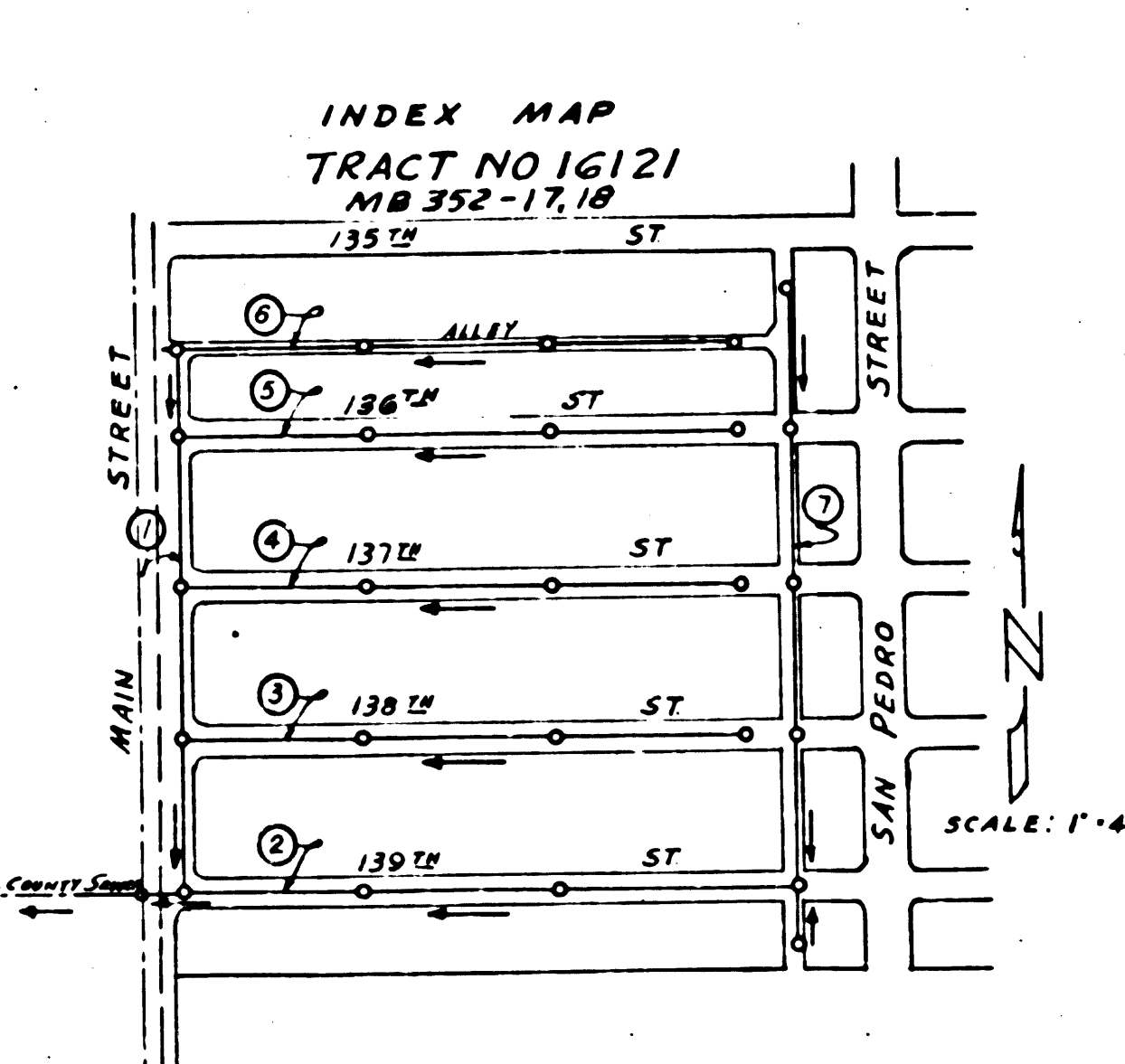
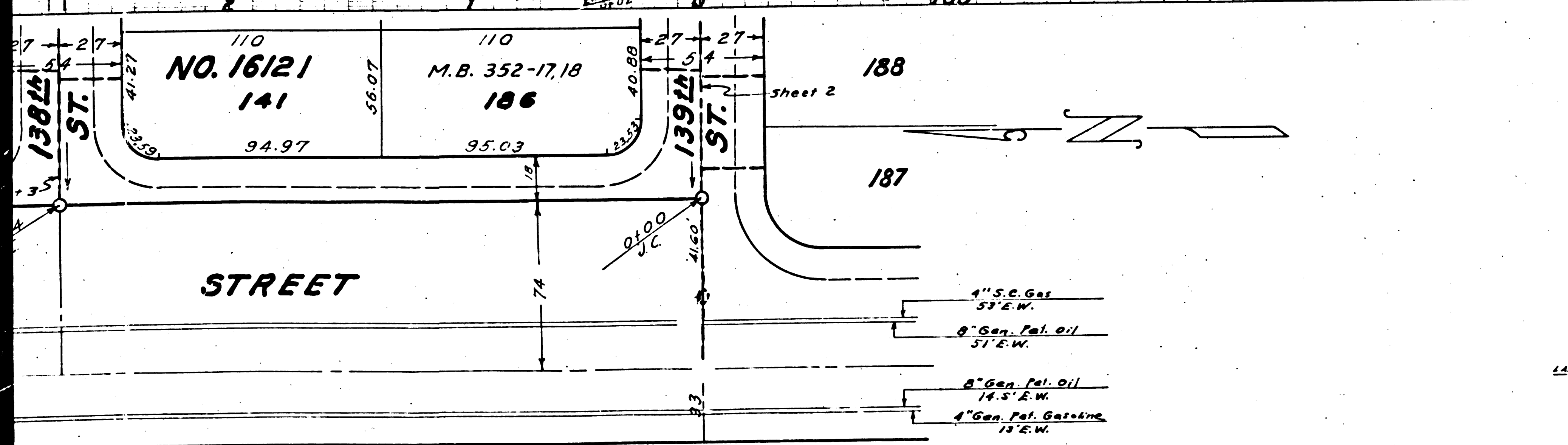
PRIVATE CONTRACT NO. 1119
W.S. 26
SHEET 1 OF 7 SHEETS
AUGUST 1949

PREPARED IN THE OFFICE OF
ENGINEERING SERVICE CORP.

BY: E. F. Koenig
REG. E. NO. 3692

FOR LEGEND
SEE PLAN NO. S-Q-64

NOTE:
GRADES TO WHICH THIS IMPROVEMENT IS TO BE CONSTRUCTED ARE SHOWN ON PLANS AND PROFILE. GRADE POINTS FOR TOP OF CURB, CENTER LINE OF STREET OR CENTER LINE OF ALLEY ARE SHOWN BY CIRCLES ON PROFILES. AT ALL JOINTS BETWEEN DESIGNATED POINTS THE GRADE SHALL BE ESTABLISHED SO AS TO CONFORM TO A STRAIGHT LINE DRAWN BETWEEN SAID DESIGNATED POINTS. ELEVATIONS ARE IN FEET ABOVE U.S.G.S. DATUM OR MEAN SEA LEVEL. THIS DRAWING AND THE DATA HEREON ARE HEREBY MADE A PART OF THE SPECIFICATIONS. ENGINEER AND SHALL BE PROSECUTED ONLY IN THE PRESENCE OF THE COUNTY ENGINEER. SCOPES SHALL BE CONSIDERED THE CONTRACTOR MUST OBTAIN A PERMIT TO EXCAVATE IN COUNTY STREETS FROM THE L.A. COUNTY ROAD DEPARTMENT 211 SOUTH MAIN STREET AND MAKE A DEPOSIT WITH THE COUNTY ENGINEER, 808 COUNTY ENGINEER BUILDING SUFFICIENT TO COVER THE COST OF CONSTRUCTION INSPECTION AND RECORD PLANS. IF WORK IS TO BE DONE IN A STATE HIGHWAY, A PERMIT MUST BE OBTAINED FROM THE STATE OF CALIFORNIA DIVISION OF HIGHWAYS, 808 STATE BUILDING AFTER MAKING THE DEPOSIT WITH THE COUNTY ENGINEER. COUNTY OF LOS ANGELES, CALIFORNIA

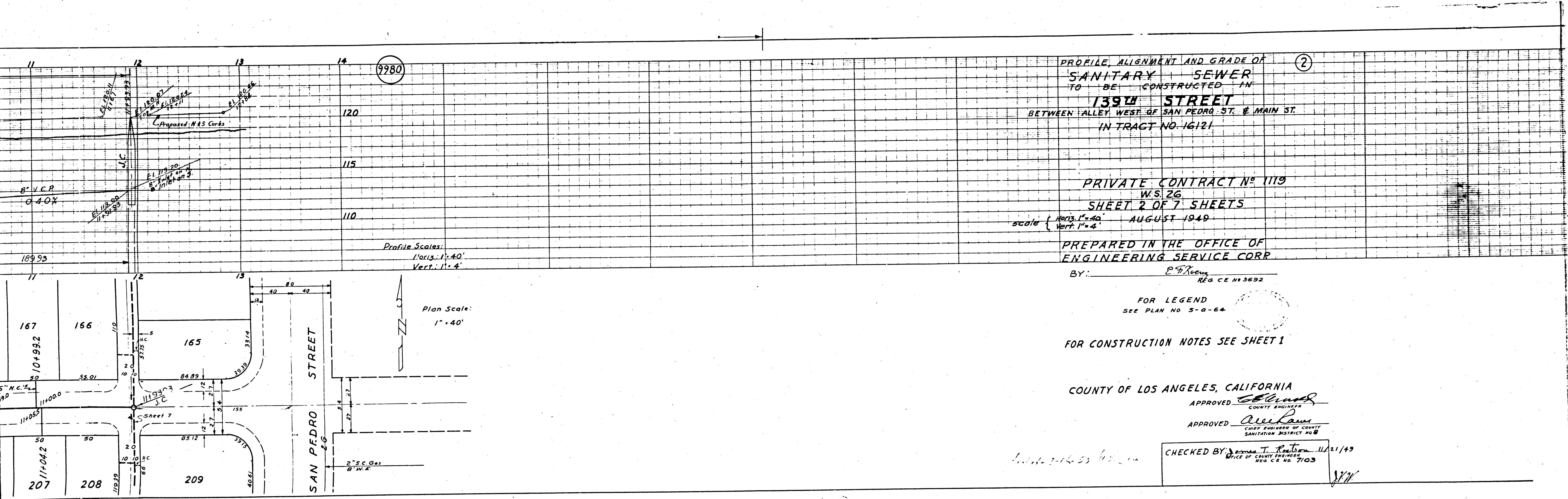


APPROVED: E. F. Koenig
COUNTY ENGINEER

APPROVED: [Signature]
CHIEF REVIEWER OF COUNTY
SANITATION DISTRICT NO. 8

CHECKED BY: James T. Keaton 11/21/49
OFFICE OF COUNTY ENGINEER ROOM 608 7103

6-16-50



PROFILE, ALIGNMENT AND GRADE OF 2
 SANITARY SEWER
 TO BE CONSTRUCTED IN
139TH STREET
 BETWEEN ALLEY WEST OF SAN PEDRO ST. & MAIN ST.
 IN TRACT NO. 16121

PRIVATE CONTRACT NO. 1119
 W.S. 26
 SHEET 2 OF 7 SHEETS
 AUGUST 1949

Scale: $\left\{ \begin{array}{l} Horiz. 1"=40' \\ Vert. 1"=4' \end{array} \right.$

PREPARED IN THE OFFICE OF
 ENGINEERING SERVICE CORP.

BY: P. F. Keen
 REG. CE NO. 3692

FOR LEGEND
 SEE PLAN NO. 5-9-64

FOR CONSTRUCTION NOTES SEE SHEET 1

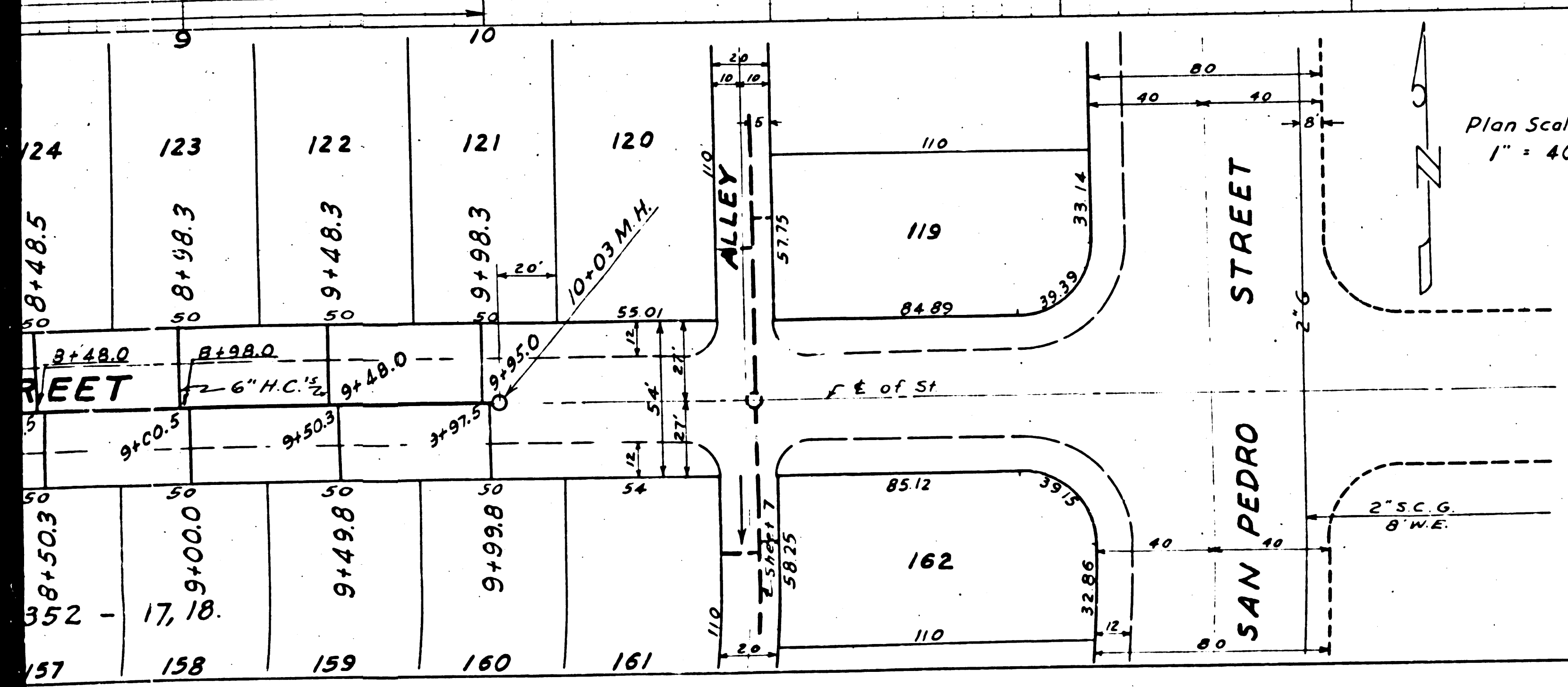
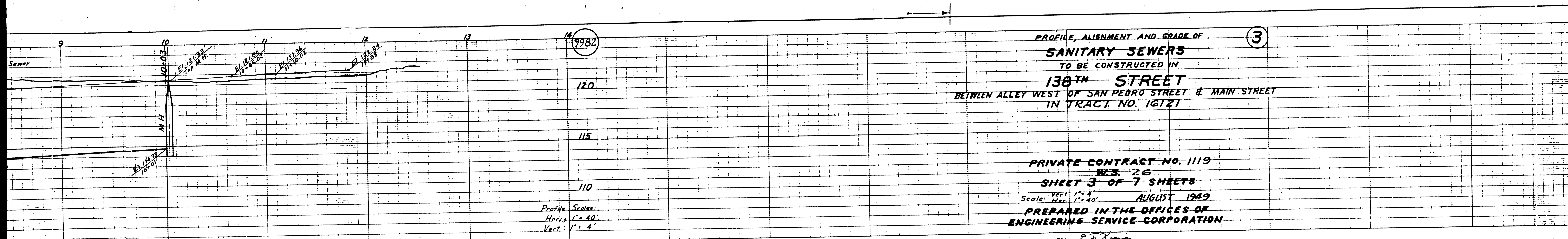
COUNTY OF LOS ANGELES, CALIFORNIA

APPROVED [Signature]
 COUNTY ENGINEER

APPROVED [Signature]
 CHIEF ENGINEER OF COUNTY
 SANITATION DISTRICT NO. 8

CHECKED BY [Signature] 11/21/49
 OFFICE OF COUNTY ENGINEER
 REG. CE NO. 7103

E 1



FOR CONSTRUCTION NOTES SEE SHEET 1

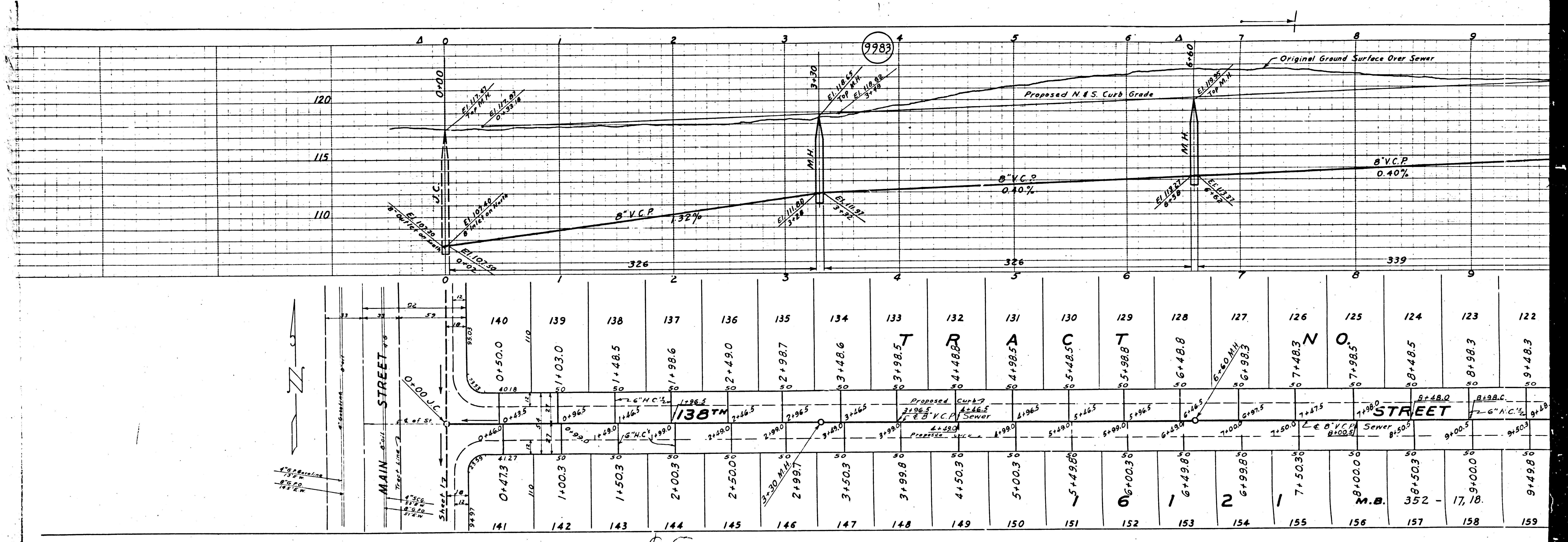
COUNTY OF LOS ANGELES, CALIFORNIA

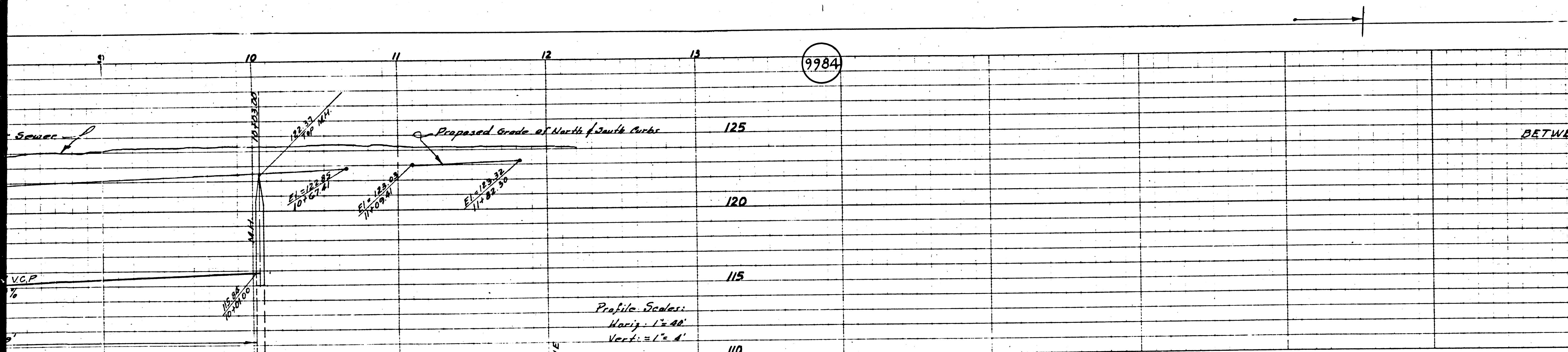
APPROVED [Signature]
 County Engineer

APPROVED [Signature]
 ASST. CHIEF ENGINEER OF COUNTY
 SANITATION DISTRICT NO. 8

CHECKED [Signature] 11/21/49
 OFFICE OF COUNTY ENGINEER, REG. C.E. NO. 7103

101109





PROFILE ALIGNMENT AND GRADE OF
 SANITARY SEWER
 TO BE CONSTRUCTED IN
 137TH STREET
 BETWEEN ALLEY WEST OF SAN PEDRO ST AND MAIN ST.
 IN TRACT NO. 16121

PRIVATE CONTRACT NO. 1119.
 WS. 26
 SHEET 4 OF 7 SHEETS
 AUGUST 1949

PREPARED IN THE OFFICE OF
 ENGINEERING SERVICE CORP

BY: *E. F. Keeney* REG. CE. NO. 3652

FOR LEGEND
 SEE PLAN NO. 5-9-64

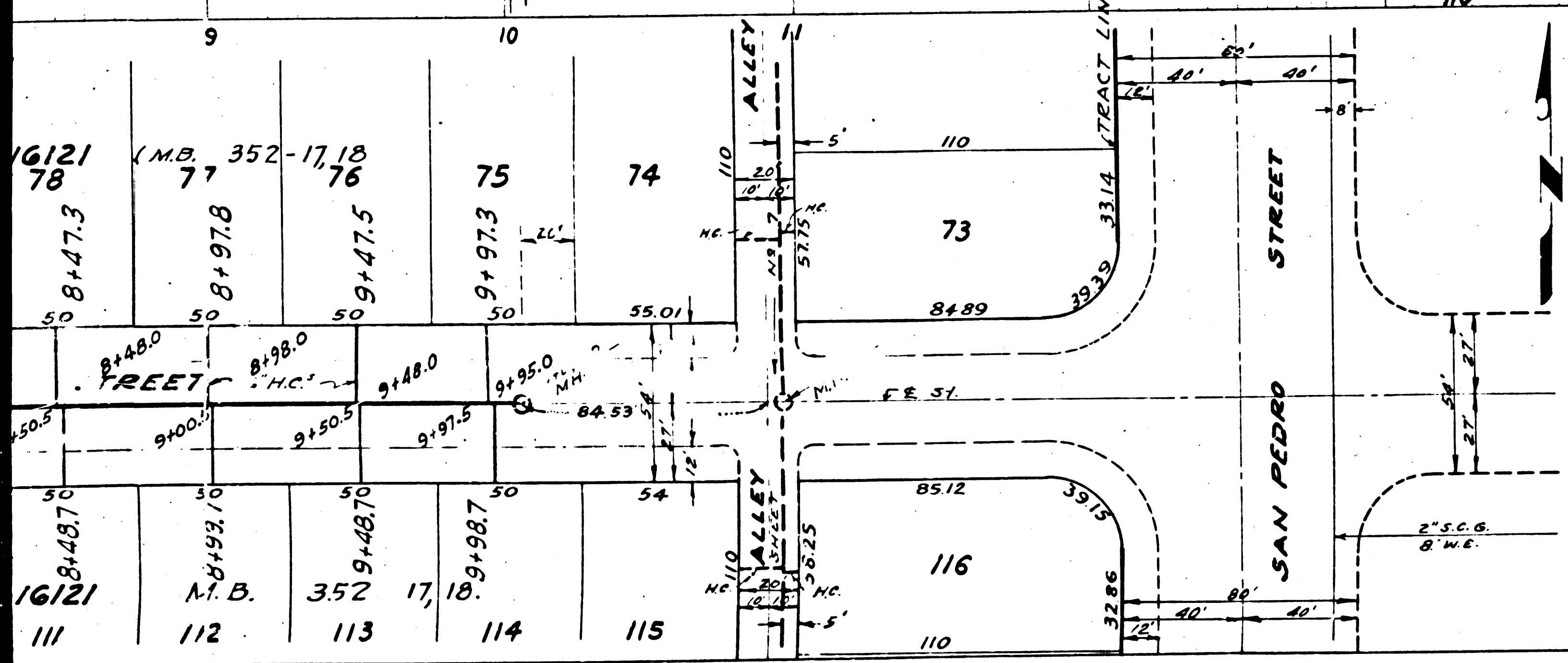
FOR CONSTRUCTION NOTES SEE SHEET 1

COUNTY OF LOS ANGELES, CALIFORNIA

APPROVED *[Signature]*
 COUNTY ENGINEER

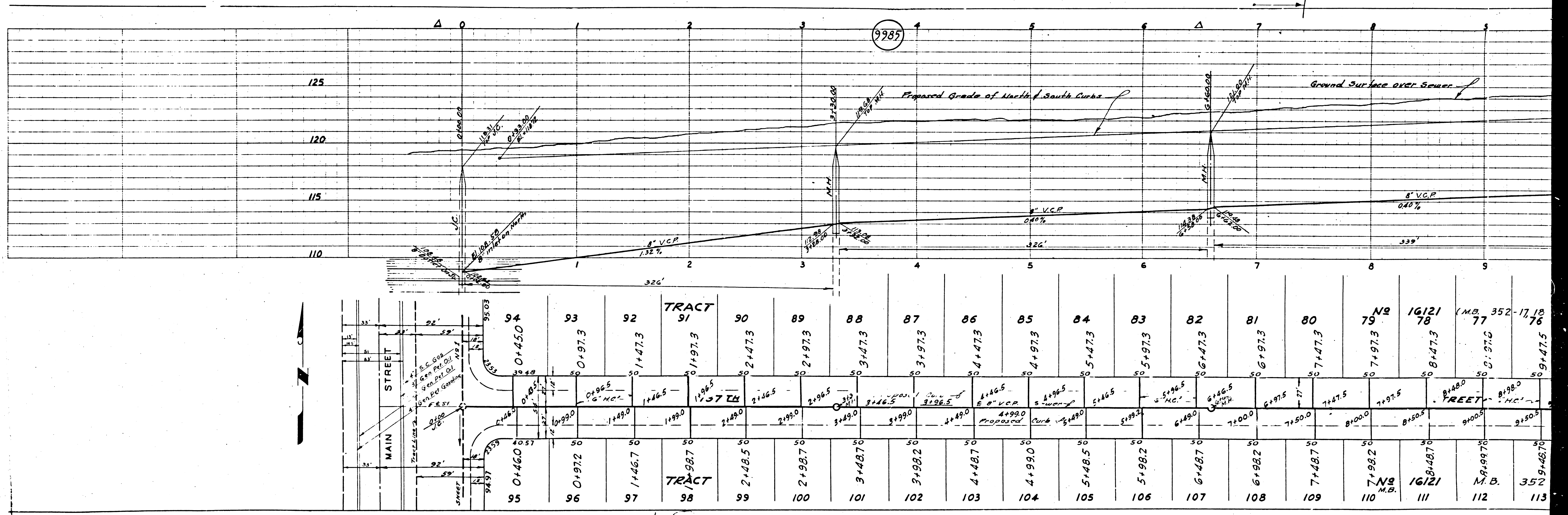
APPROVED *[Signature]*
 CHIEF ENGINEER BY COUNTY
 SANITATION DISTRICT NO. 8

CHECKED BY: *James T. Rother* 11/21/49
 OFFICE OF COUNTY ENGINEER
 REG. CE. NO. 7103



Plan Scale:
 1" = 40'

16121
 78
 77
 76
 75
 74
 73
 110
 111
 112
 113
 114
 115
 116



9986

PROFILE, ALIGNMENT AND GRADE OF 5
SANITARY SEWERS
 TO BE CONSTRUCTED IN
PIRU STREET
 BETWEEN ALLEY WEST OF SAN PEDRO STREET & MAIN STREET
 IN TRACT NO. 16121

PRIVATE CONTRACT NO. 1119
 W.S. 26
SHEET 5 OF 7 SHEETS
 Scale: Vert. 1" = 4'
 Horiz. 1" = 40' AUGUST 1949
 PREPARED IN THE OFFICES OF
ENGINEERING SERVICE CORPORATION

BY S. F. Keeney
 Reg. C.E. No. 2692
 FOR LEGEND
 See Plan No. S-a-64

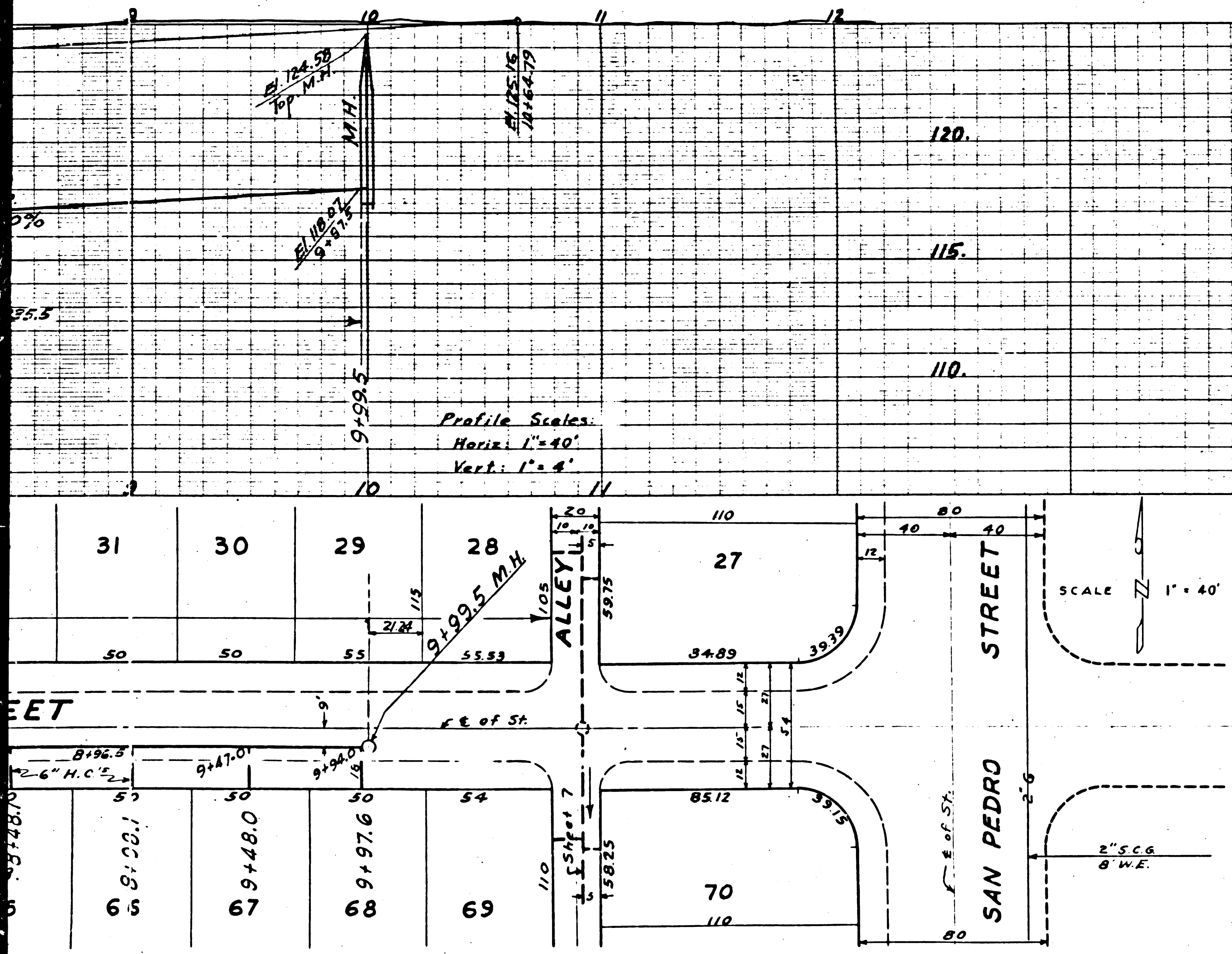
FOR CONSTRUCTION NOTES SEE SHEET 1

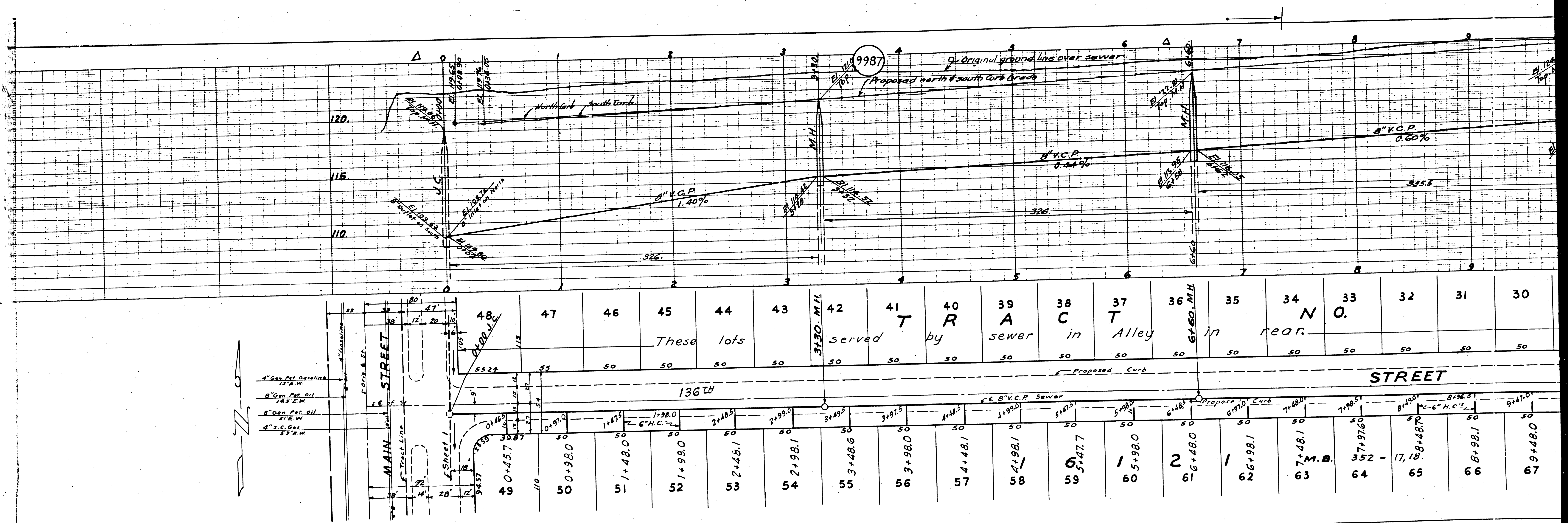
COUNTY OF LOS ANGELES, CALIFORNIA

APPROVED [Signature]
 County Engineer

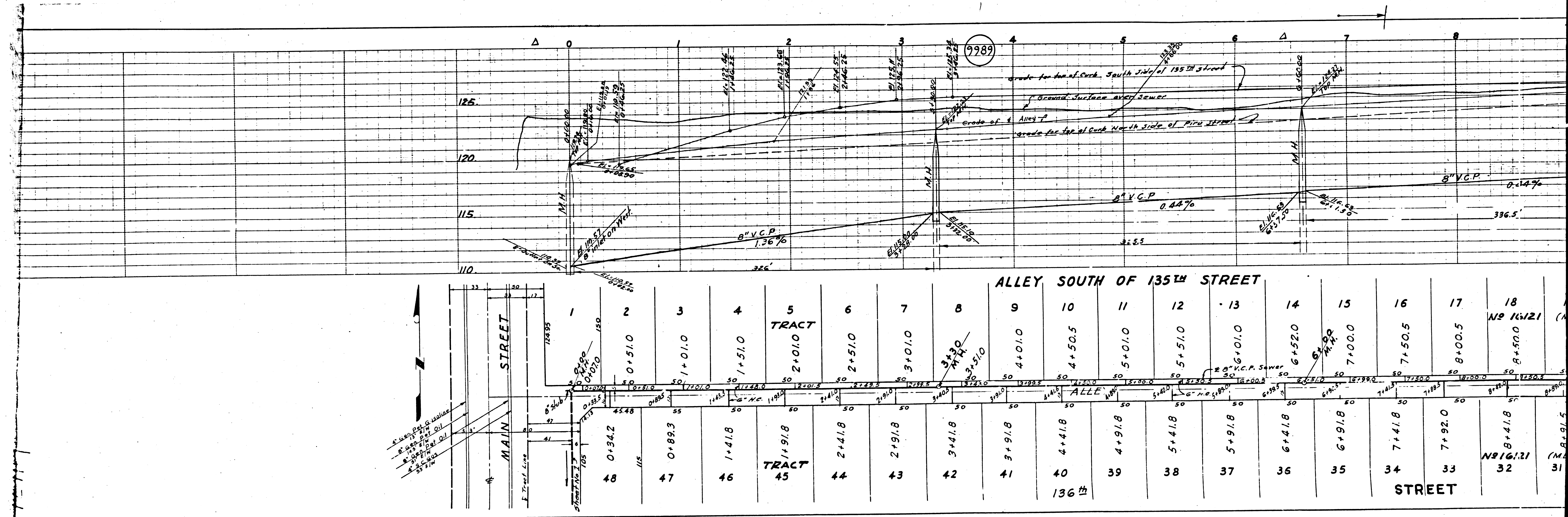
APPROVED [Signature]
 Asst. Chief Engineer of County
 Sanitation District No. 8

CHECKED [Signature] 11/21/49
 Office of County Engineer, Reg. C.E. No. 7103





22



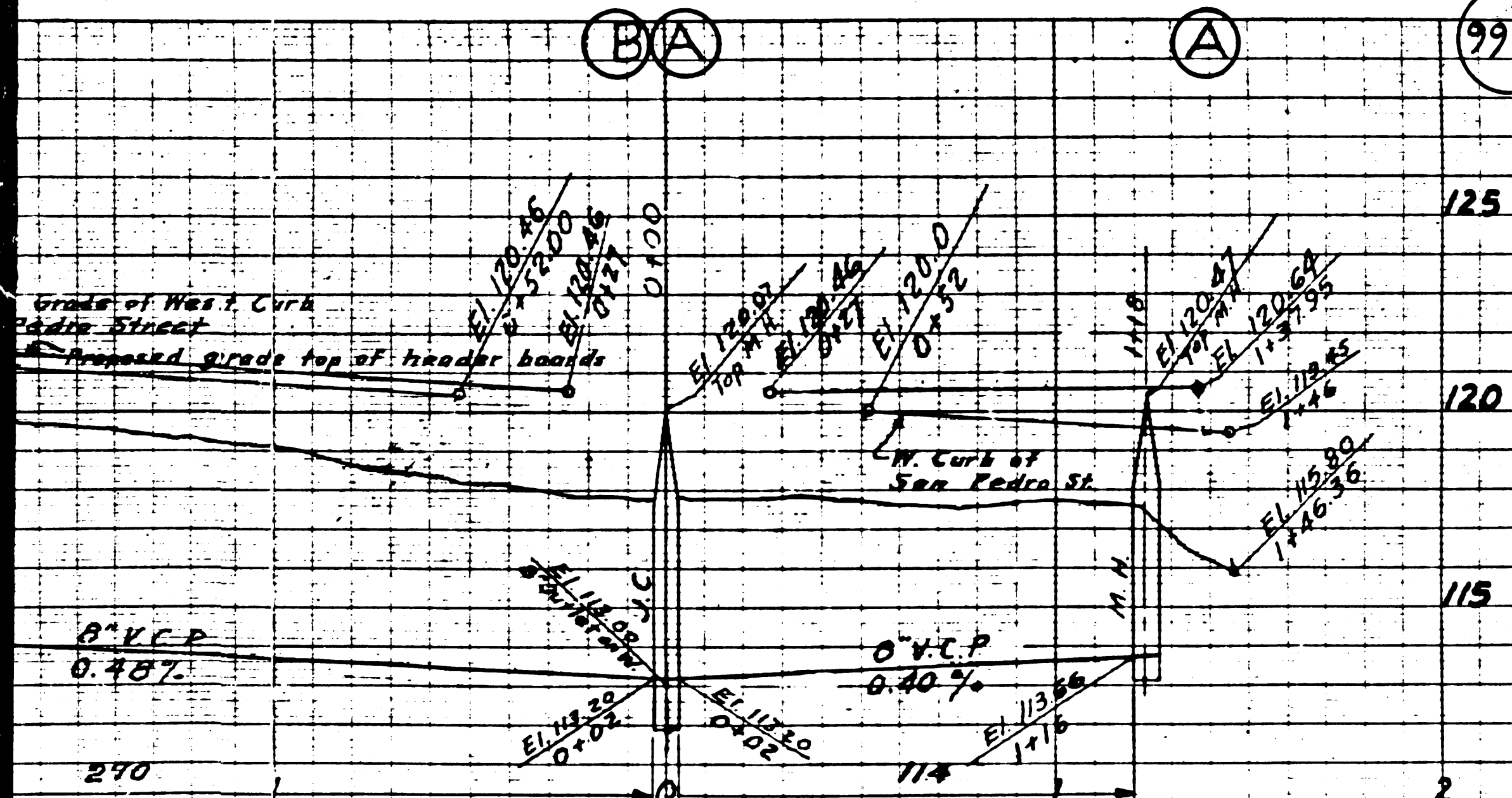
1" = 50' PLAN
 1" = 10' VERT.
 1" = 10' HORIZ.

ALLEY SOUTH OF 135TH STREET

STREET

20

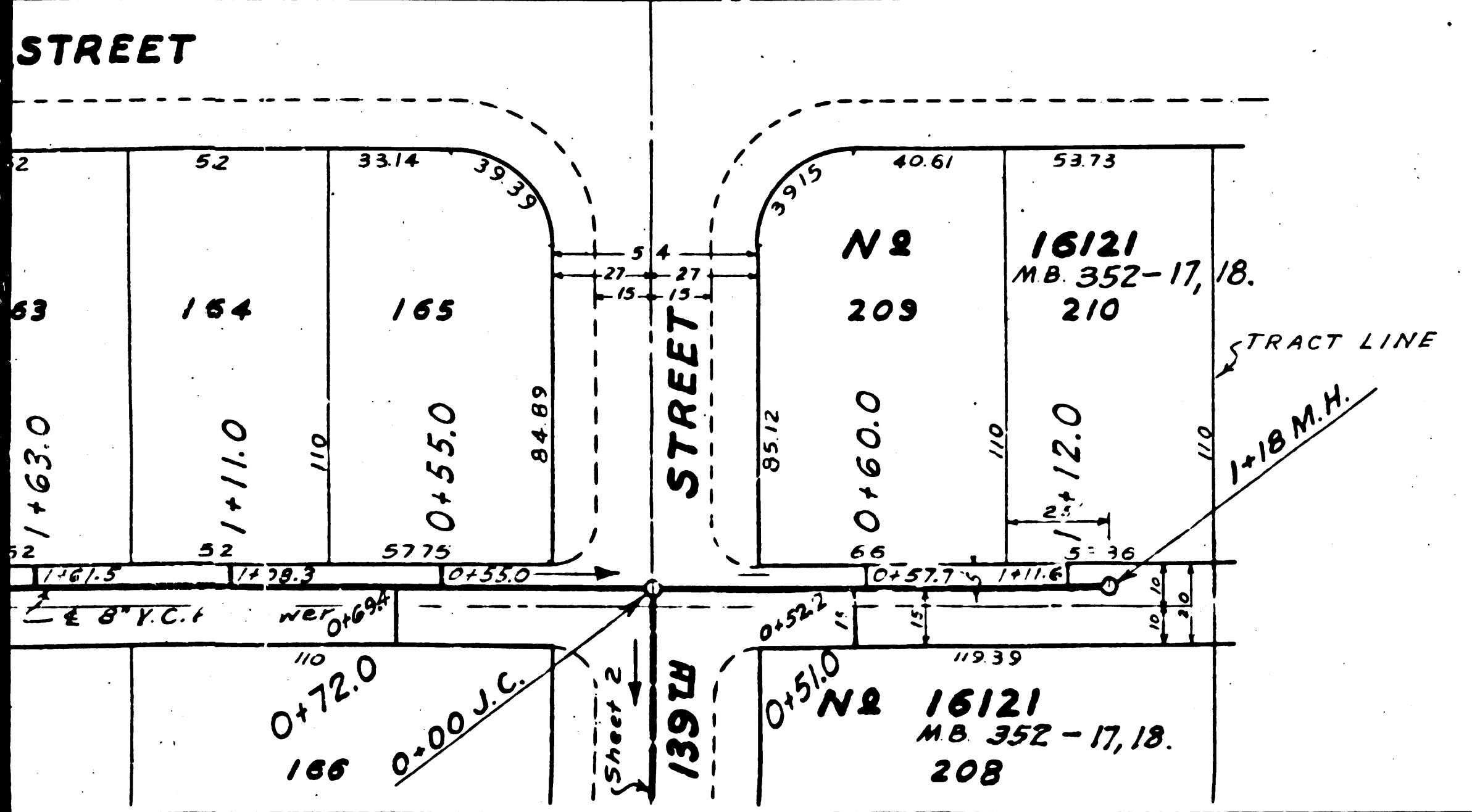
9990
A
B/A



PROFILE, ALIGNMENT AND GRADE OF
SANITARY SEWERS
 TO BE CONSTRUCTED IN
ALLEY WEST OF SAN PEDRO STREET
 BETWEEN 135th STREET & 118 FEET SOUTH OF 139th STREET
 IN TRACT NO. 16121

PRIVATE CONTRACT NO. 1119
 N.S. 26
 SHEET 7 OF 7 SHEETS
 Scale: Vert. 1" = 4'
 Horiz. 1" = 40' AUGUST 1949
 PREPARED IN THE OFFICES OF
 ENGINEERING SERVICE CORPORATION

BY E. F. Keeney
 Reg. C.E. No. 3692
 FOR LEGEND
 See Plan No. S-9-C-4



Scale: 1" = 40'

FOR CONSTRUCTION NOTES SEE SHEET 1

COUNTY OF LOS ANGELES, CALIFORNIA

APPROVED [Signature]
 County Engineer

APPROVED [Signature]
 Asst. Chief Engineer of County
 Sanitation District No. 8

CHECKED [Signature] 11/2/49
 Office of County Engineer, Reg. C.E. No. 7103

①

