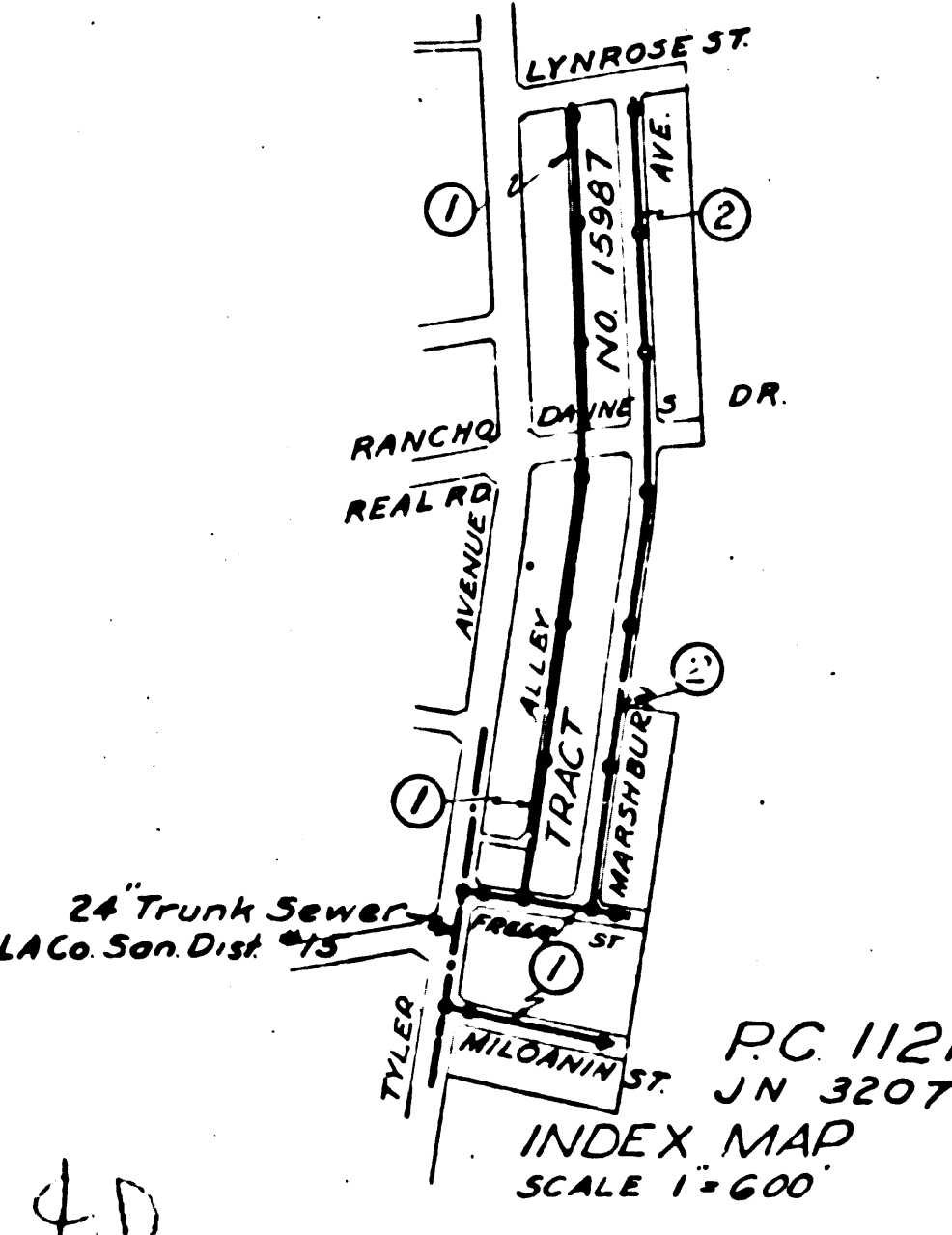
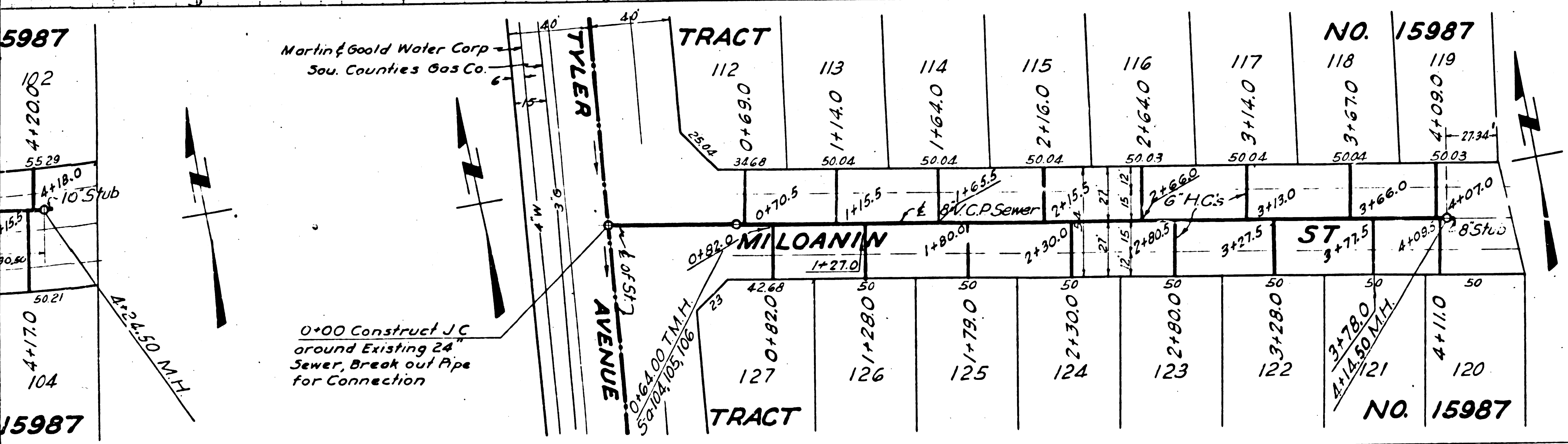


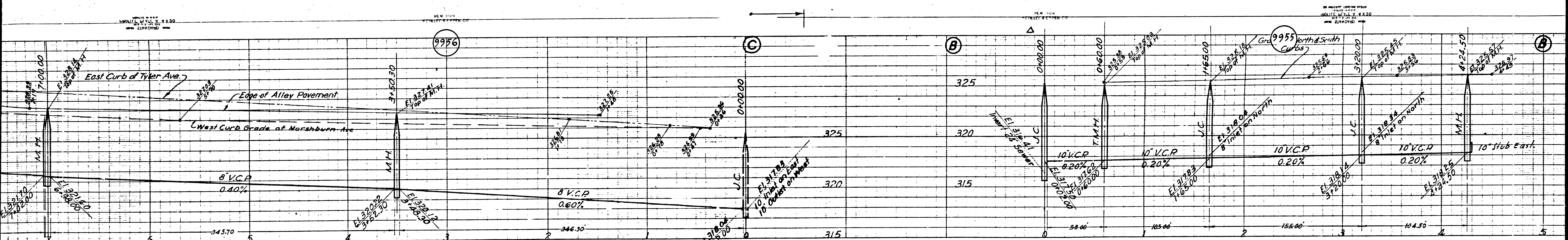
PROFILE ALIGNMENT AND GRADE OF
SANITARY SEWERS
 TO BE CONSTRUCTED IN
MILANIN STREET
 BETWEEN TYLER AVENUE & 414' EAST OF TYLER AVENUE
FREER STREET
 BETWEEN TYLER AVENUE & 425' EAST OF TYLER AVENUE
ALLEY
 BETWEEN FREER STREET & LYNROSE STREET

PRIVATE CONTRACT NO. 1121
 W.S. 46
 AUG. 1949
 SHEET 1 OF 2 SHEETS
 PREPARED IN THE OFFICE OF
KARL E. TUTTLE

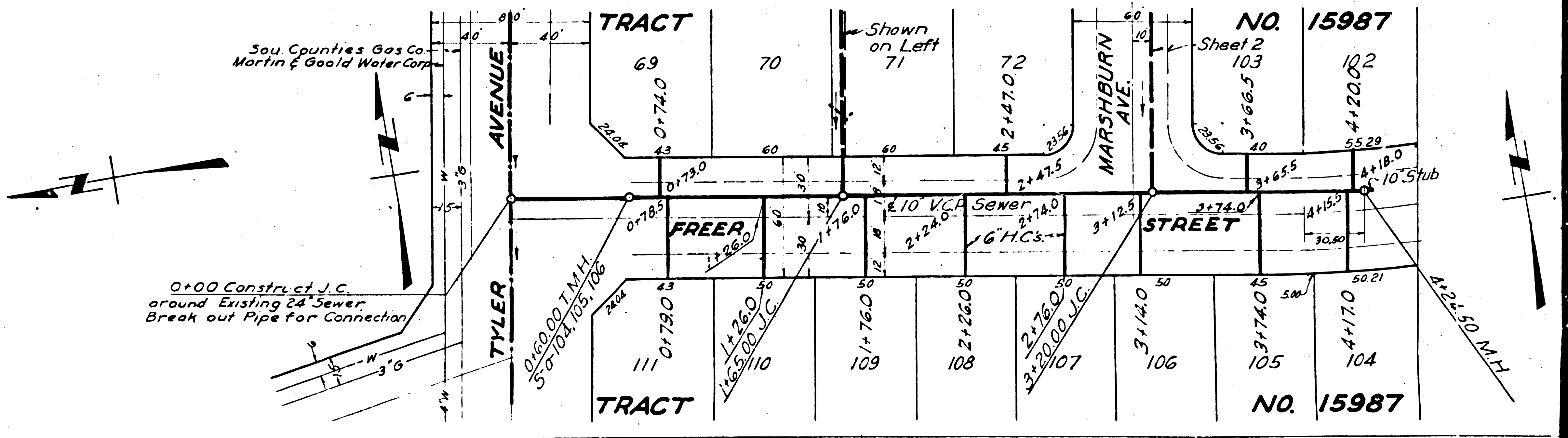


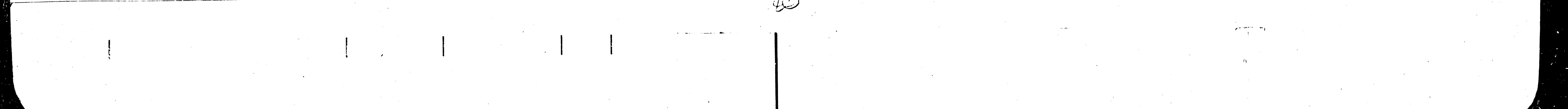
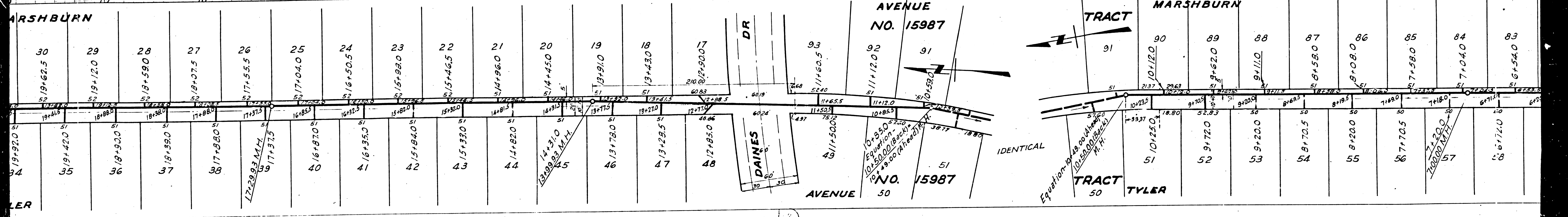
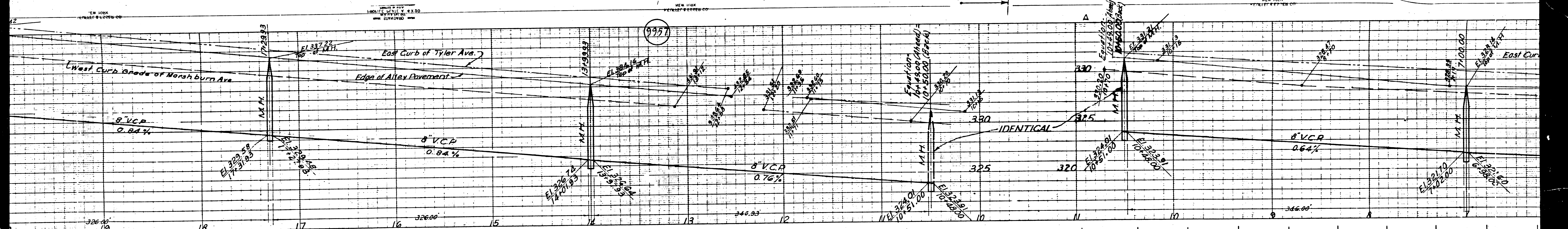
NOTE:
 Grades to which this improvement is to be constructed are shown on Plans and Profile.
 Grade points for top of curb, center line of street or center line of alley are shown by circles on
 Profiles. At all points between designated points the grade shall be established so as to conform to
 a straight line drawn between said designated points.
 Elevations are in feet above U.S.G.S. datum or mean sea level.
 This drawing and the data hereon are hereby made a part of the specifications.
 Work shall be constructed according to specifications on file in the office of the County
 Engineer and shall be prosecuted only in the presence of the County Engineer.
 Before work can be started the Contractor must obtain a permit to excavate in County Streets
 from the L.A. County Road Dept., 211 So. Main St., and note a deposit with the County Engineer,
 828 County Engineering Bldg. sufficient to cover the cost of construction inspection and record plans.
 If work is to be done in a State Highway, a permit must be obtained from the State of California
 Division of Highways, 608 State Bldg. at Los Angeles, before the work is started with the County Engineer.

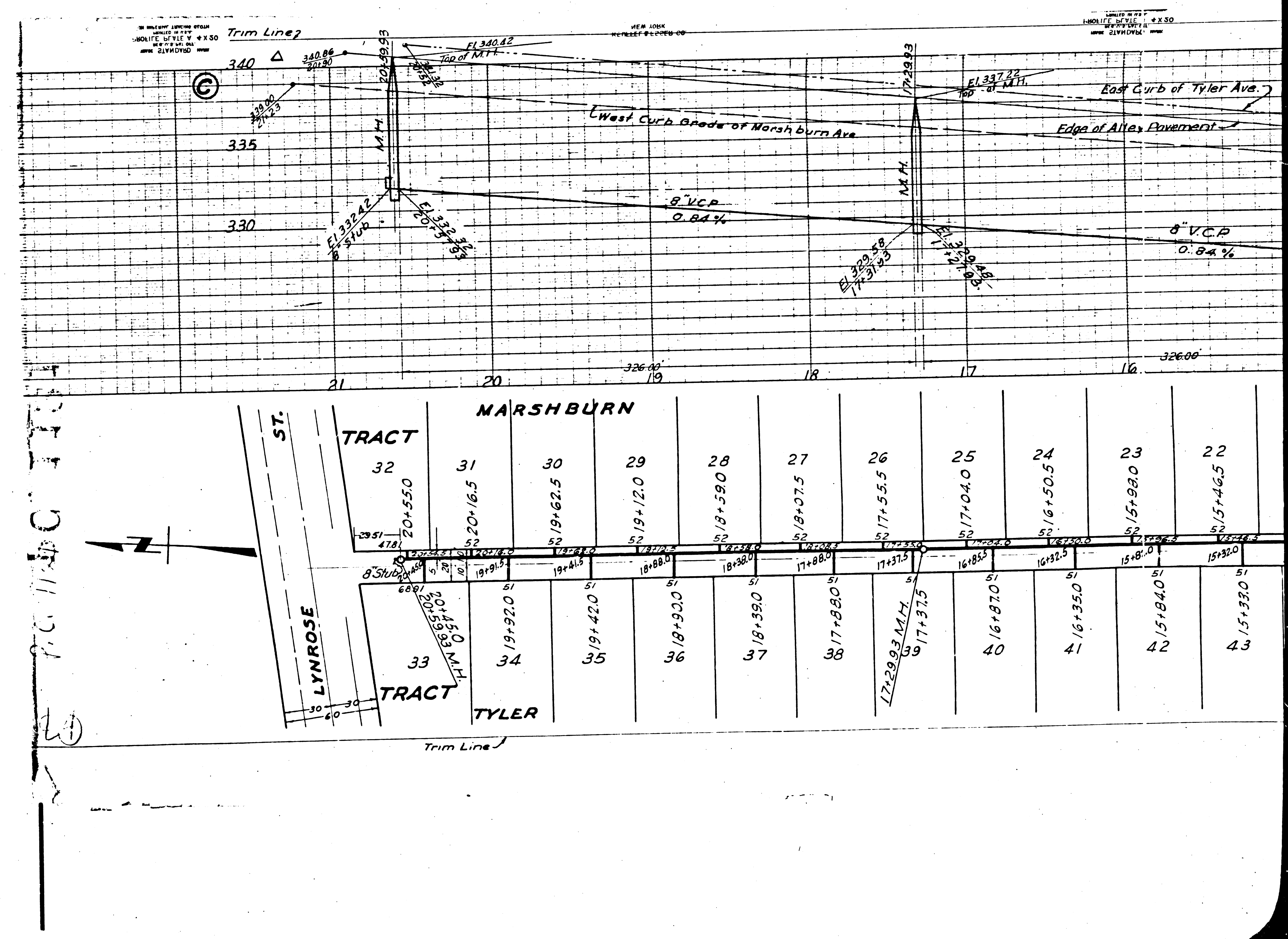
COUNTY OF LOS ANGELES, CALIFORNIA
 APPROVED *[Signature]*
 COUNTY ENGINEER
 APPROVED *[Signature]*
 OFFICE ENGINEER
 FOR CHIEF ENGINEER OF COUNTY
 SANITATION DISTRICT NO. 15
 CHECKED BY *[Signature]* 8/26/49
 Office of County Engineer, R.E. 7103



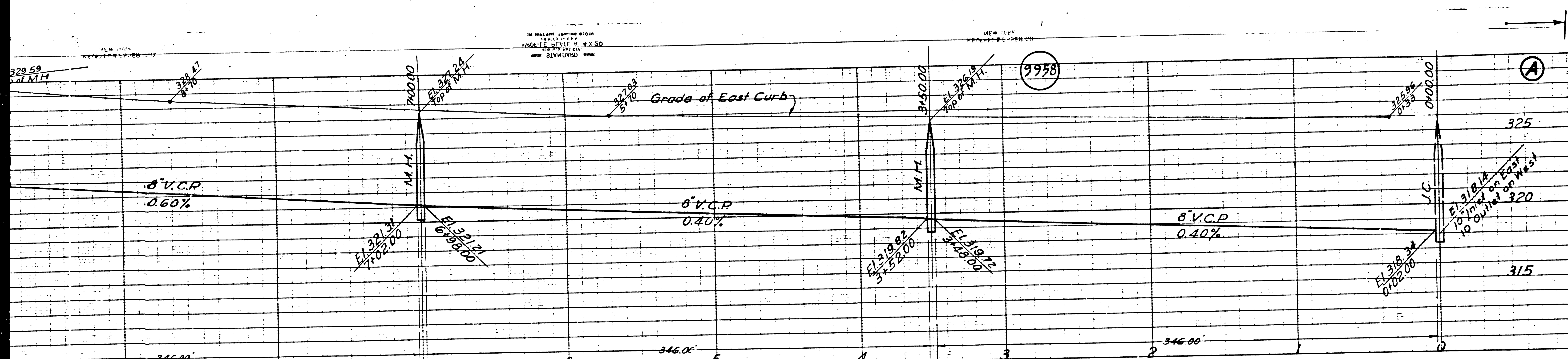
| AVENUE NO. 15987 | | | | | | | | | | | | | |
|--------------------|--------|--------|--------|--------|--------|--------|--------|--------|--------|--------|--------|--------|--------|
| 84 | 83 | 82 | 81 | 80 | 79 | 78 | 77 | 76 | 75 | 74 | 73 | 72 | 71 |
| 7+04.0 | 6+54.0 | 6+04.0 | 5+53.0 | 5+03.0 | 4+50.0 | 4+00.0 | 3+45.5 | 2+96.5 | 2+46.0 | 1+95.0 | 1+44.8 | 0+00.0 | 0+45.5 |
| 57 | 58 | 59 | 60 | 61 | 62 | 63 | 64 | 65 | 66 | 67 | 68 | 69 | 70 |
| 7+04.0 | 6+17.0 | 6+20.0 | 5+70.0 | 5+20.0 | 4+70.5 | 4+20.0 | 3+69.5 | 3+20.0 | 2+70.0 | 2+20.0 | 1+69.0 | 0+40.0 | 0+00.0 |
| NO. 15987 | | | | | | | | | | | | | |
| SEWER RIGHT OF WAY | | | | | | | | | | | | | |
| TYLER STREET | | | | | | | | | | | | | |
| FREER AVENUE | | | | | | | | | | | | | |







10
 11
 12
 13
 14
 15
 16
 17
 18
 19
 20
 21
 22
 23
 24
 25
 26
 27
 28
 29
 30
 31
 32
 33
 34
 35
 36
 37
 38
 39
 40
 41
 42
 43
 44
 45
 46
 47
 48
 49
 50
 51
 52
 53
 54
 55
 56
 57
 58
 59
 60
 61
 62
 63
 64
 65
 66
 67
 68
 69
 70
 71
 72
 73
 74
 75
 76
 77
 78
 79
 80
 81
 82
 83
 84
 85
 86
 87
 88
 89
 90
 91
 92
 93
 94
 95
 96
 97
 98
 99
 100



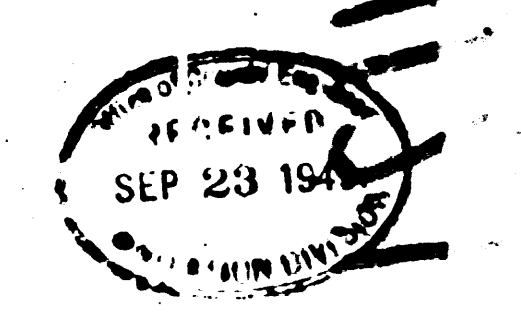
PROFILE ALIGNMENT AND
SANITARY SEWERS
 TO BE CONSTRUCTED IN
MARSHBURN AVENUE
 BETWEEN FREER ST. & LYNROSE ST.

B.M. Elev. 325.59, 1.4 N in W curb Tyler Ave, 5 N of curb return at NW cor of Freer St

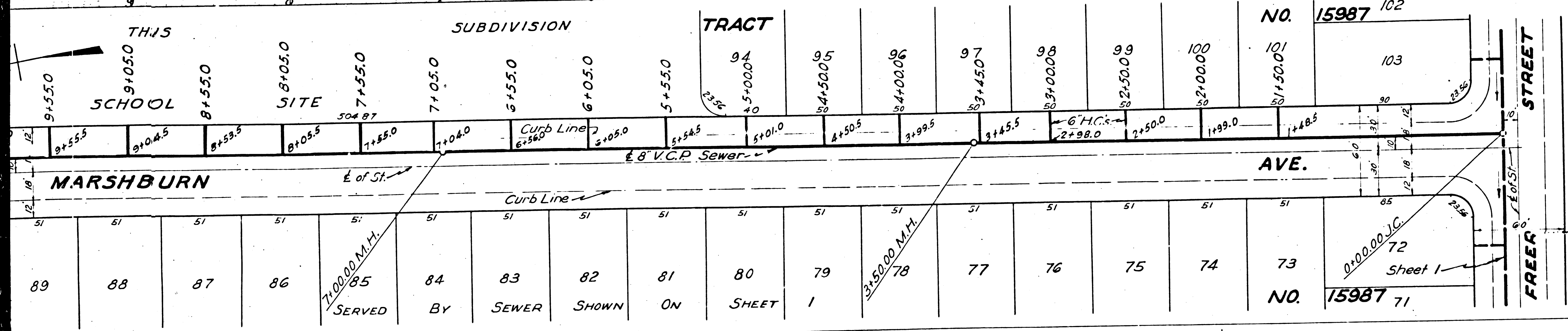
PRIVATE CONTRACT NO. 112
 W.S. 46
 SHEET 2 OF 2 SHEETS

PREPARED IN THE OFFICE OF
KARL F. TUTT, E

BY *Karl F. Tuttle* R.E. 2700



FOR CONSTRUCTION NOTES SEE SHEET 1



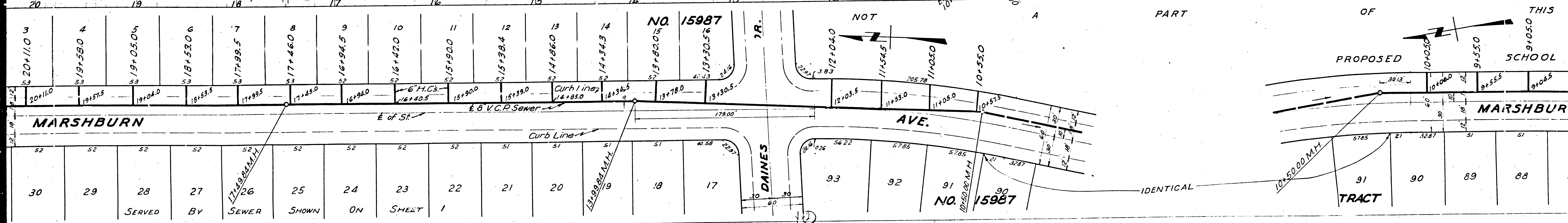
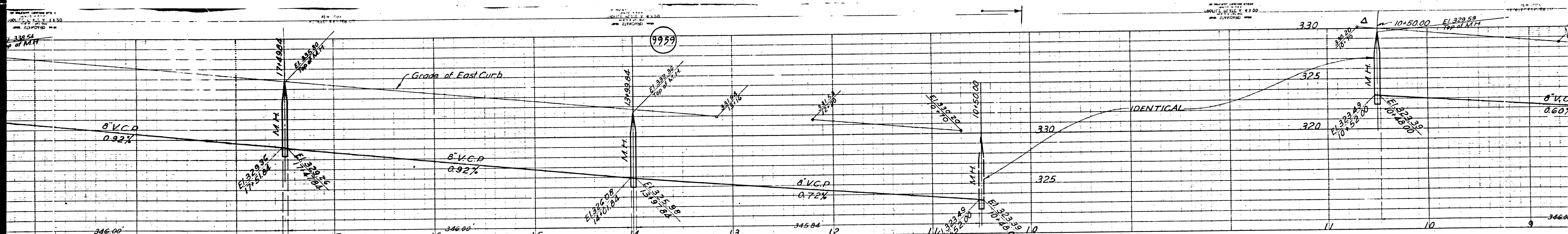
COUNTY OF LOS ANGELES, CALIFORNIA

APPROVED *[Signature]*
 COUNTY ENGINEER

APPROVED *[Signature]*
 FOR CHIEF ENGINEER OF SANITATION DISTRICT

CHECKED BY *[Signature]*
 Office of County Engineer

Trim Line



| | | | | | | | | | | | | | | | | | |
|----------------------------------|---------|----------|---------|---------|---------|---------|---------|---------|---------|---------|---------|---------|---------|---------|---------|---------|--------|
| 3 | 4 | 5 | 6 | 7 | 8 | 9 | 10 | 11 | 12 | 13 | 14 | 15 | 16 | 17 | 18 | 19 | 20 |
| 20+11.0 | 19+59.0 | 19+05.05 | 18+53.0 | 17+99.5 | 17+46.0 | 16+94.5 | 16+42.0 | 15+90.0 | 15+38.4 | 14+86.0 | 14+34.3 | 13+82.0 | 13+30.5 | 12+78.0 | 11+26.5 | 10+75.0 | 9+23.5 |
| 53 | 53 | 53 | 53 | 53 | 53 | 52 | 52 | 52 | 52 | 52 | 52 | 51 | 51 | 51 | 51 | 51 | 51 |
| MARSHBURN | | | | | | | | | | | | | | | | | |
| 30 | 29 | 28 | 27 | 26 | 25 | 24 | 23 | 22 | 21 | 20 | 19 | 18 | 17 | 16 | 15 | 14 | 13 |
| SERVED BY SEWER SHOWN ON SHEET 1 | | | | | | | | | | | | | | | | | |

| | | | | | | | | | | | | | | | | | | | | | | | | | | | | | | | |
|-----------------|----|----|----|----|----|----|----|----|----|----|----|----|----|----|----|----|----|----|----|----|----|---|---|---|---|---|---|---|---|---|--|
| 31 | 30 | 29 | 28 | 27 | 26 | 25 | 24 | 23 | 22 | 21 | 20 | 19 | 18 | 17 | 16 | 15 | 14 | 13 | 12 | 11 | 10 | 9 | 8 | 7 | 6 | 5 | 4 | 3 | 2 | 1 | |
| MARSHBURN TRACT | | | | | | | | | | | | | | | | | | | | | | | | | | | | | | | |

