

1. Use Standard Manhole frames and covers, S-a-117.
2. Use Standard Strength pipe.
3. Use cement mortar for all vitrified clay pipe joints.
4. Construct house connections with 1/8\"/>

PROFILE ALIGNMENT AND GRADE OF  
**SANITARY SEWERS**  
 TO BE CONSTRUCTED IN  
**LIVE OAK AVENUE**  
 FROM EIGHTH AVENUE TO 225 FEET  
 EAST OF EIGHTH AVENUE

NOTE:  
 Before breaking into any existing structure and before final acceptance of this work, County Sanitation District should be notified in order that required inspection may be made.

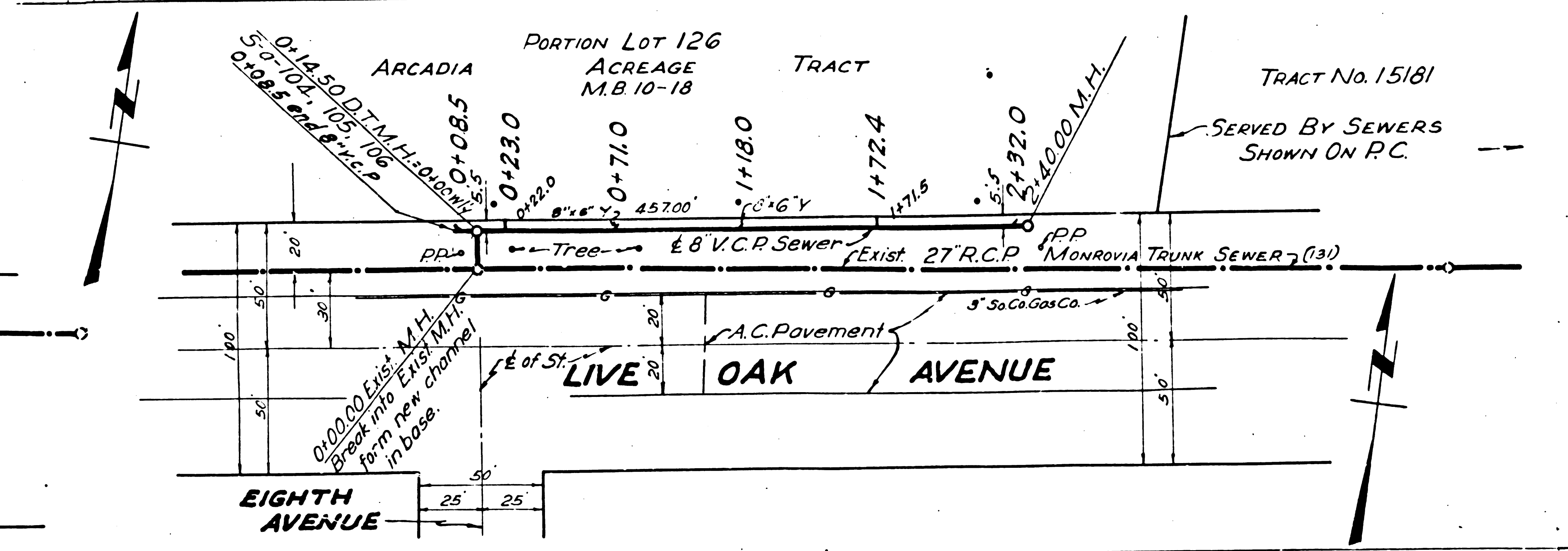
NOTE:  
 No representative of the County Engineer will survey or lay out any portion of this work. The owner or his authorized representative shall furnish the County Engineer with grade sheets and stationing for all existing structures, poles, wires, and shall locate stakes for them. If their proper locations with stationing plainly marked. Any change in locations shall be requested in writing by the owner or his representative. No doubts shall be made in these plans without approval of the County Engineer.

**PRIVATE CONTRACT NO. 1126**  
**W.S. 45**  
**SHEET 1 OF 1 SHEET**  
 PREPARED IN THE OFFICE OF  
**KARL F. TUTTLE**  
 BY *Karl F. Tuttle*  
 RE. 2000

NOTE:  
 Grades to which this improvement is to be constructed are shown on Plans and Profile. Grade points for top of curb center line of street or center line of alley are shown by circles on Profiles. All points between designated points the grade shall be established so as to conform to a straight line drawn between said designated points.  
 Elevations are in feet above U.S.G.S. datum or mean sea level.  
 This drawing and the data hereon are hereby made a part of the specifications.  
 Work shall be constructed according to specifications on file in the office of the County Engineer and shall be prosecuted only in the presence of the County Engineer.  
 Before work can be started the Contractor must obtain a permit to excavate in County Streets from the L.A. County Road Dept., 215 S. Main Street, and make a deposit with the County Engineer, 828 County Eng'g Bldg., sufficient to cover the cost of construction inspection and record plans.  
 If work is to be done on a State Highway a permit must be obtained from the State of California, division of highways, 808 State Bldg., after making the deposit with the County Engineer.  
 COUNTY OF LOS ANGELES, CALIFORNIA

Approved for the collection and pretreatment of liquid industrial waste only  
*Karl F. Tuttle*  
 Industrial Waste Engineer, Office of the County Engineer  
 Date: 8/19/49

APPROVED *[Signature]*  
 COUNTY ENGINEER  
 APPROVED *[Signature]*  
 CHIEF ENGINEER OF COUNTY SANITATION DISTRICT NO. 15  
 CHECKED BY *[Signature]*  
 CITY OF COUNTY ENGINEER RE. NO. 3108



INDEX MAP  
 Scale 1\"/>

*Check with Loren 12-9-49*

20

SCALE T=40'  
 C.P. to be abandoned  
 FRAME DOWEL (1\"/>

SELY line of Lot 126 Arcadia Acreage Tract

TRIM LINE

