

- USE STANDARD STRENGTH PIPE EXCEPT AS NOTED
- USE CEMENT MORTAR FOR ALL VITRIFIED CLAY PIPE JOINTS
- ENCASE FOUR FEET OF SEWER AT POINTS OF INTERFERENCE WITH POLES AS PER S-119
- CONSTRUCT HOUSE CONNECTIONS WITH VERT AT PROPERTY LINE
- 5 FEET BELOW CURB GRADE
- ALL STRUCTURES SHALL BE BRICK SEWER STRUCTURES AS PER PLAN NO. S-104
- USE "JUST RITE" MANHOLE FRAMES AND COVERS
- REINFORCE TRENCH WITHIN PAVED AREA WITH FRENCH ROCK AND OIL 4" IN THICKNESS

PROFILE, ALIGNMENT AND GRADE OF
SANITARY SEWERS
 TO BE CONSTRUCTED IN

120TH STREET
 BETWEEN ANZA AVE. AND AVIATION BLVD.
 HOUSE CONNECTIONS
 SOUTH SIDE ONLY
 PRIVATE CONTRACT NO. 1133

J. N. [Signature]
 COUNTY ENGINEER

ONE SHEET

SCALE: VERT. 1"=4'-0" HORIZ. 1"=40'-0"

AUGUST 1949

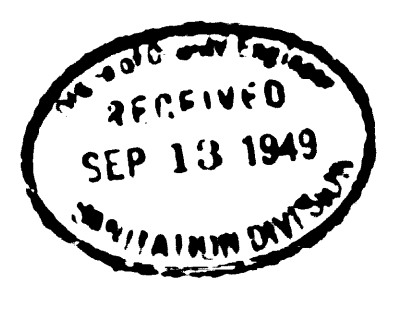
COUNTY OF LOS ANGELES, CALIFORNIA.

C. E. ARNOLD COUNTY ENGINEER

APPROVED [Signature] COUNTY ENGINEER

Note:
 No representative of the County Engineer will survey or lay out any portion of the work.
 The owner or his authorized representative shall furnish the County Engineer with grade sheets & stations of all house connections and Y branches & shall provide stakes for them at their proper locations with stationing plainly marked. Any change of location shall be requested in writing by the owner or his representative.
 No revision shall be made in these plans without approval of the County Engineer.

CHECKED BY [Signature] 8-23-49
 OFFICE OF COUNTY ENGINEER, REG. C.E. No. 3705



FOR LEGEND
 SEE PLAN NO. S-164

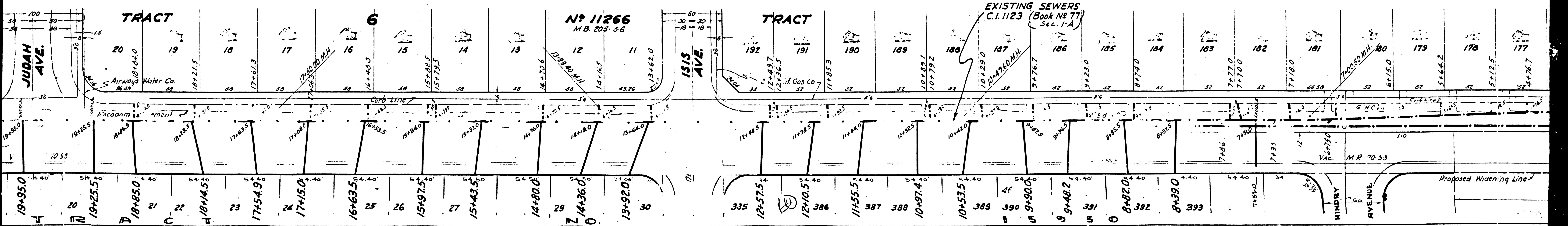
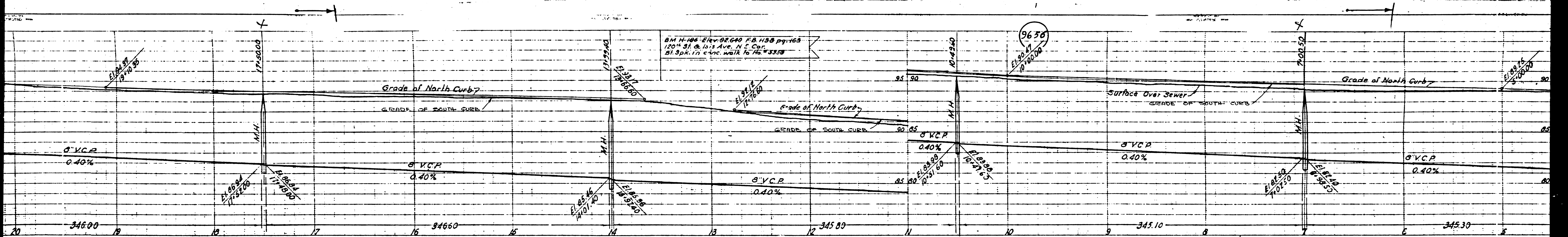
NOTES:
 GRADES TO WHICH THE IMPROVEMENT IS TO BE CONSTRUCTED ARE SHOWN ON PLANS AND PROFILES. GRADE POINTS FOR TOP OF CURB, CENTER LINE OF STREET OR CENTER LINE OF ALLEY ARE SHOWN BY CIRCLES ON PROFILES AT ALL POINTS BETWEEN DESIGNATED POINTS THE GRADE SHALL BE ESTABLISHED SO AS TO CONFORM TO A STRAIGHT LINE DRAWN BETWEEN SAID DESIGNATED POINTS.
 ELEVATIONS ARE IN FEET ABOVE U. S. G. S. DATUM OR MEAN SEA LEVEL.
 UNIT PRICES FOR ADDITIONAL WORK WHICH MAY BE REQUIRED BUT WHICH CANNOT BE ASCERTAINED IN ADVANCE SHALL BE SUBMITTED IN THE PROPOSAL.
 THIS DRAWING AND THE DATA HEREON ARE HEREBY MADE A PART OF THE SPECIFICATIONS.

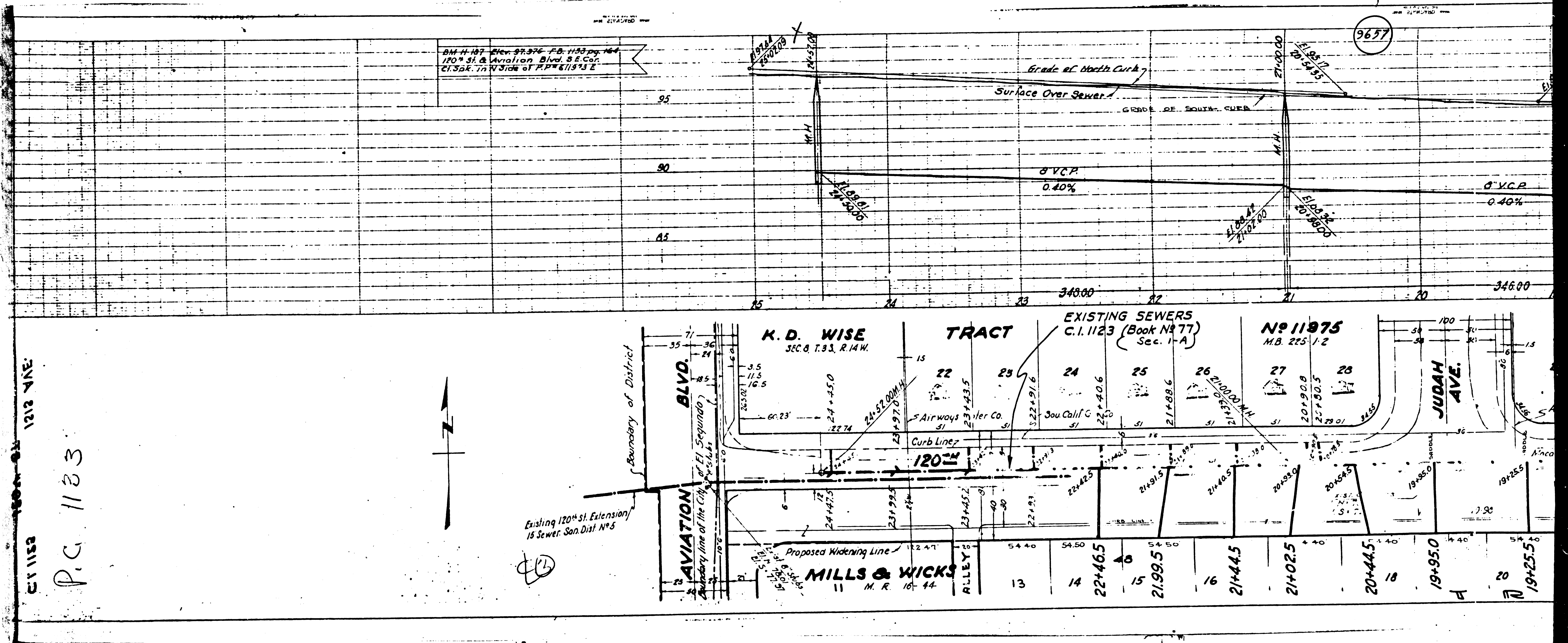
| REFERENCES | |
|------------|-------------------------------------|
| W. S. 25 | DESIGNED SEABOARD ENG. CO. AUG 1949 |
| A. B. | TRACED SEABOARD ENG. CO. AUG 1949 |
| F. B. | CHECKED W. C. MCLAREN AUG 1949 |

For H.C's. on North Side of 120th St
 see C.L. 1123 Sec. 1-A
 BK. 77

8-23-49

Trim Line





1212 AVE

P.C. 1183