

9915

USE STANDARD STRENGTH PIPE EXCEPT AS NOTED
 USE CEMENT MORTAR FOR ALL VITRIFIED CLAY PIPE JOINTS
 ENCASE FOUR FEET OF SEWER AT POINTS OF INTERFERENCE WITH POLES AS PER S-412
 CONSTRUCT HOUSE CONNECTIONS WITH INVERT AT CURB LINE 4 FEET BELOW CURB GRADE EXCEPT AS NOTED

ALL STRUCTURES SHALL BE BRICK SEWER STRUCTURES AS PER PLAN NO. S-6-104
 USE STANDARD MANHOLE FRAMES AND COVERS AS PER PLAN NO. S-6-117
 CONSTRUCT TOPS OF ALL STRUCTURES IN RIGHTS OF WAY 2' ABOVE FINISHED GRADE
 RESURFACE ALL TRENCHES WITHIN PAVED AREA TO MEET LOS ANGELES COUNTY ROAD DEPT. OR STATE HIGHWAY REQUIREMENTS

NO REVISIONS SHALL BE MADE IN THESE PLANS WITHOUT APPROVAL OF THE COUNTY ENGINEER
 NO REPRESENTATIVE OF THE COUNTY ENGINEER WILL SURVEY OR LAY OUT ANY PORTION OF THE WORK
 THE OWNER OR HIS AUTHORIZED REPRESENTATIVE SHALL FURNISH THE COUNTY ENGINEER WITH GRADE SHEETS AND STATIONS OF ALL HOUSE CONNECTIONS AND T BRANCHES AND SHALL PROVIDE STAKES FOR THEM AT THEIR PROPER LOCATIONS WITH STATIONING PLAINLY MARKED. ANY CHANGE OF LOCATION SHALL BE REQUESTED IN WRITING BY THE OWNER OR HIS REPRESENTATIVE.

NOTE:
 Elevations shown herein are on a plane 4.94' lower.

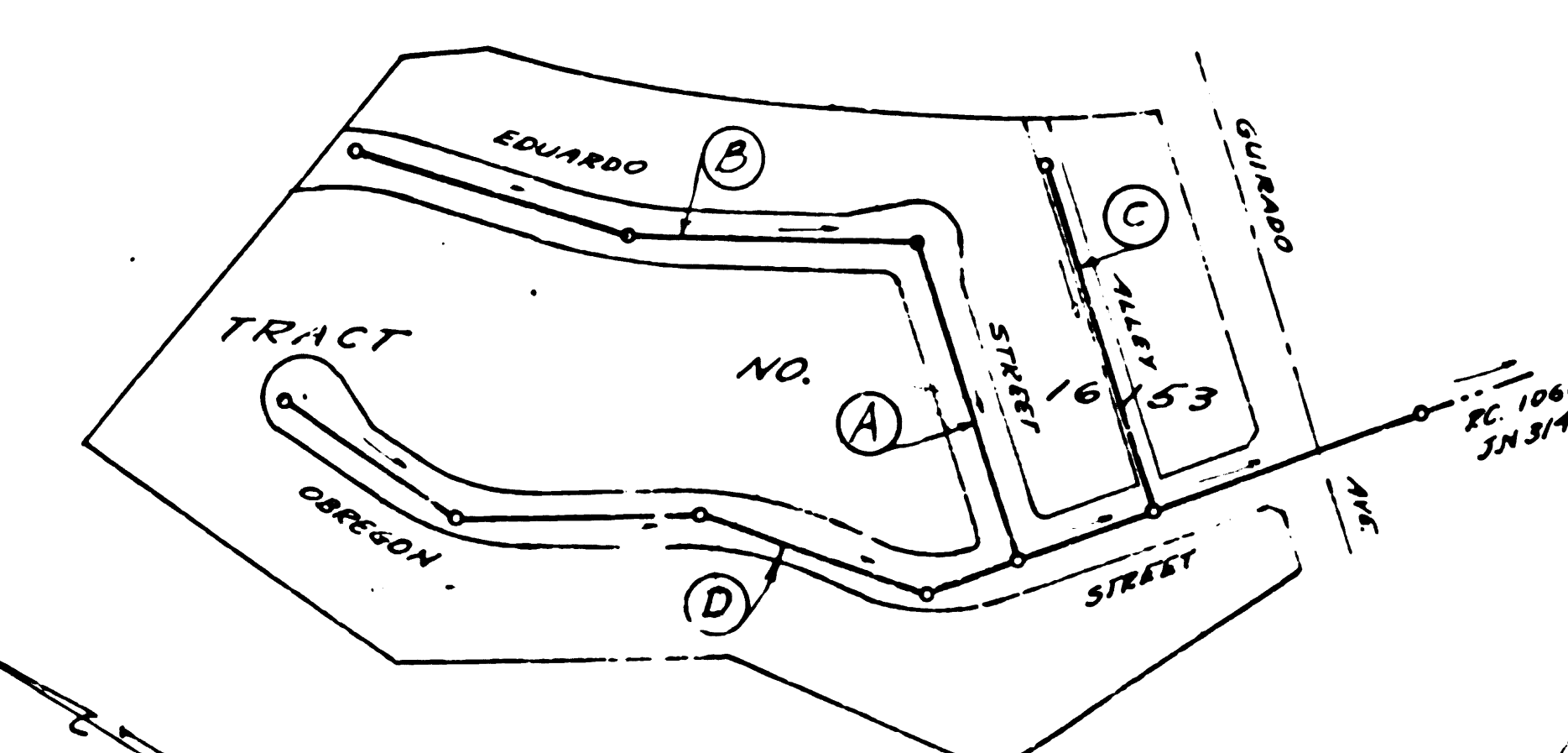
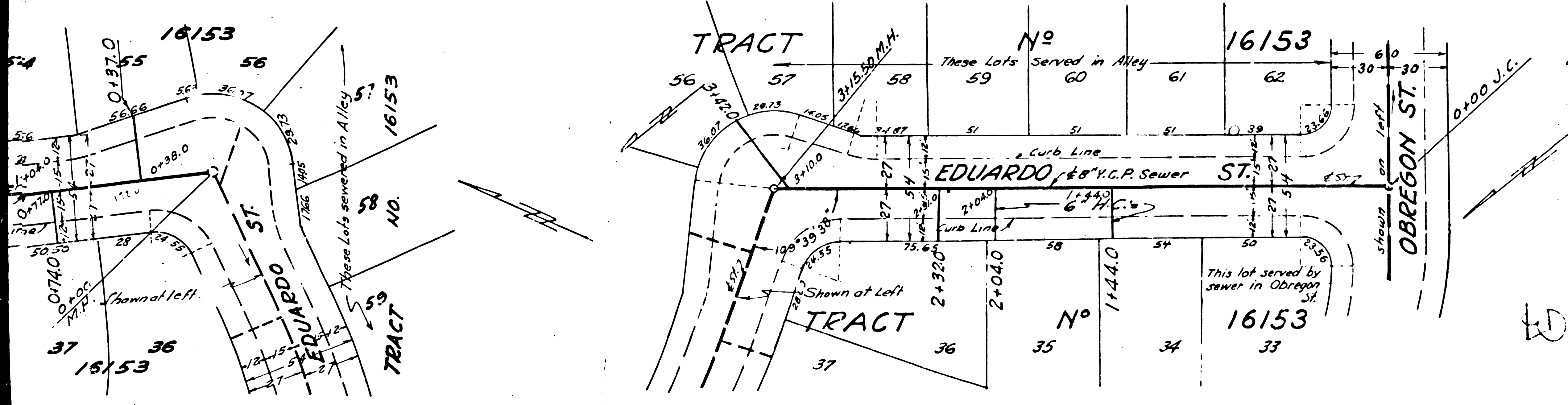
PROFILE ALIGNMENT AND GRADE OF
SANITARY SEWERS
 TO BE CONSTRUCTED IN

EDUARDO STREET
 BETWEEN OREGON ST. & N. B. B. OF TRACT NO. 16153

ALLEY
 BETWEEN OREGON ST. & N. E. B. OF TRACT NO. 16153

OBREGON STREET
 BETWEEN TRACT NO. 16153 & NORTH B. OF TRACT NO. 16153

PRIVATE CONTRACT NO. 1137
 W. S. 37
 SHEET ONE OF ONE SHEETS
 SCALE: VERT. 1"=4'
 HORIZ. 1"=40'



INDEX MAP
 RC. NO. 1137, JN 3225
 Scale: 1"=200'

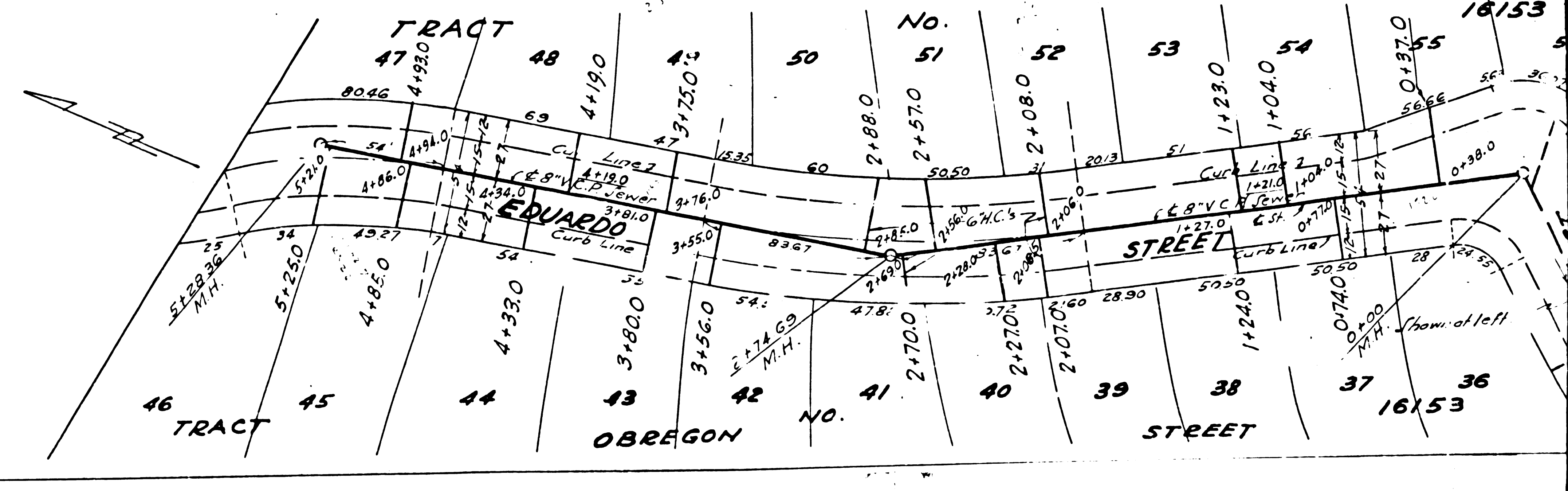
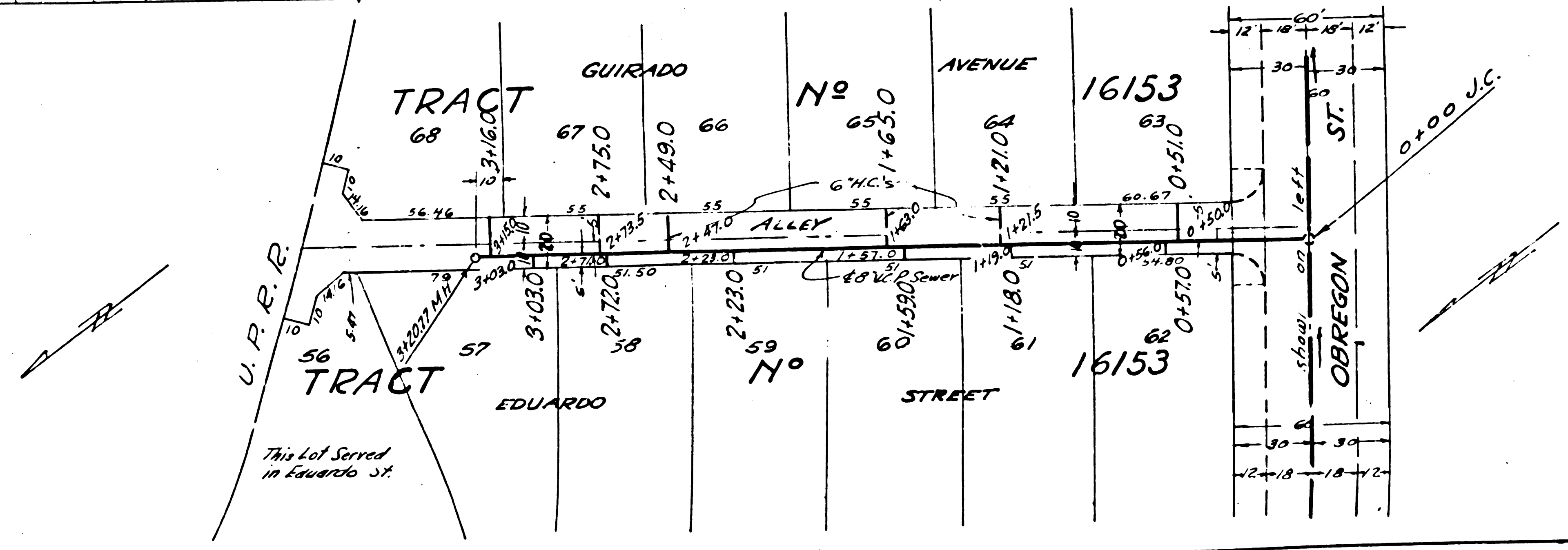
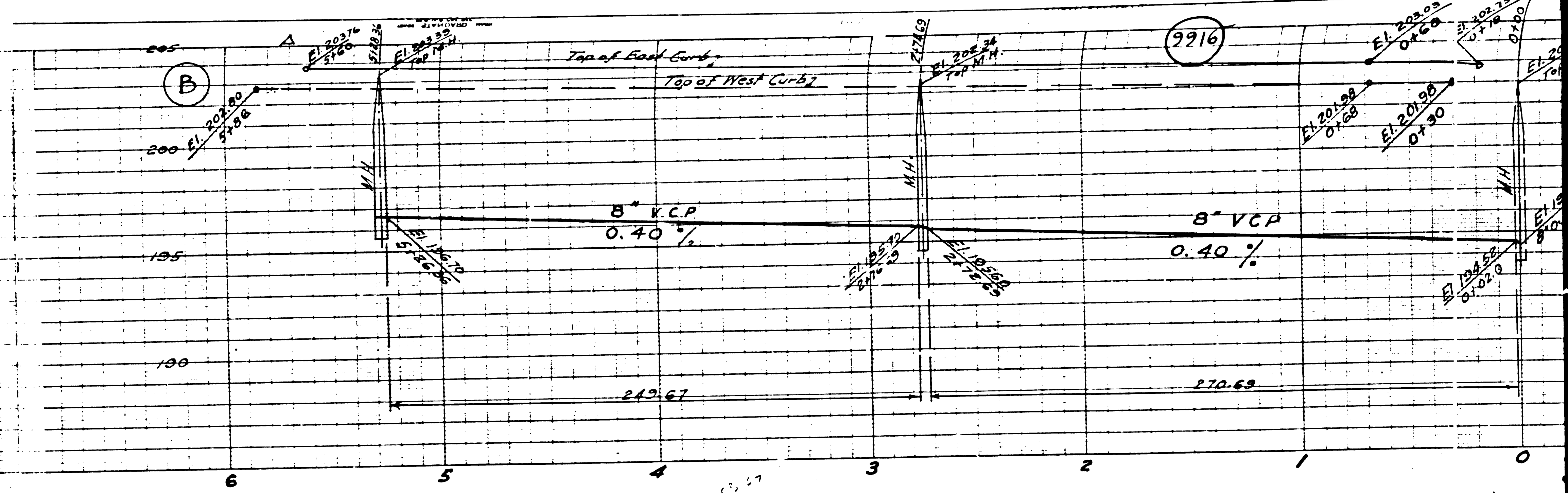
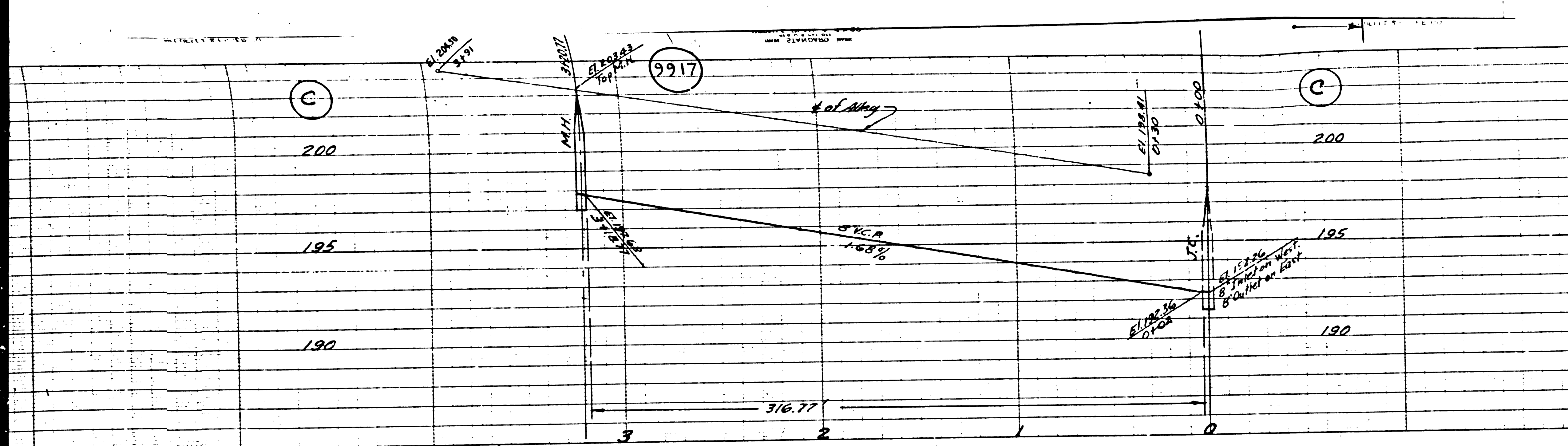
NOTE:
 GRADES TO WHICH THIS IMPROVEMENT IS TO BE CONSTRUCTED ARE SHOWN ON PLANS AND PROFILES. GRADE POINTS FOR TOP OF CURB, CENTER LINE OF STREET OR CENTER LINE OF ALLEY ARE SHOWN BY CIRCLES ON PROFILES AT ALL POINTS BETWEEN DESIGNATED POINTS THE GRADE SHALL BE ESTABLISHED SO AS TO CONFORM TO A STRAIGHT LINE DRAWN BETWEEN SAID DESIGNATED POINTS.
 ELEVATIONS ARE IN FEET ABOVE U. S. G. S. DATUM OR MEAN SEA LEVEL.
 THIS DRAWING AND THE DATA HEREON ARE HEREBY MADE A PART OF THE SPECIFICATIONS.
 WORK SHALL BE CONSTRUCTED ACCORDING TO SPECIFICATIONS ON FILE IN THE OFFICE OF THE COUNTY ENGINEER AND SHALL BE PROSECUTED ONLY IN THE PRESENCE OF THE COUNTY ENGINEER. BEFORE WORK CAN BE STARTED, THE CONTRACTOR MUST OBTAIN A PERMIT TO EXCAVATE IN THE COUNTY STREETS FROM THE L. A. COUNTY ROAD DEPT. TO BE HAD IN HIS POSSESSION AND DEPOSIT WITH THE COUNTY ENGINEER ROOM 830 AT 108 WIND STREET, SUFFICIENT TO COVER THE COST OF CONSTRUCTION INSPECTION AND RECORD PLANS.
 APPROVAL OF THIS PLAN BY THE COUNTY OF LOS ANGELES DOES NOT CONSTITUTE A REPRESENTATION AS TO THE EXISTENCE OR NON-EXISTENCE OF ANY UNDERGROUND UTILITY, PIPE, OR STRUCTURE WITHIN THE LIMITS OF THIS PROJECT.

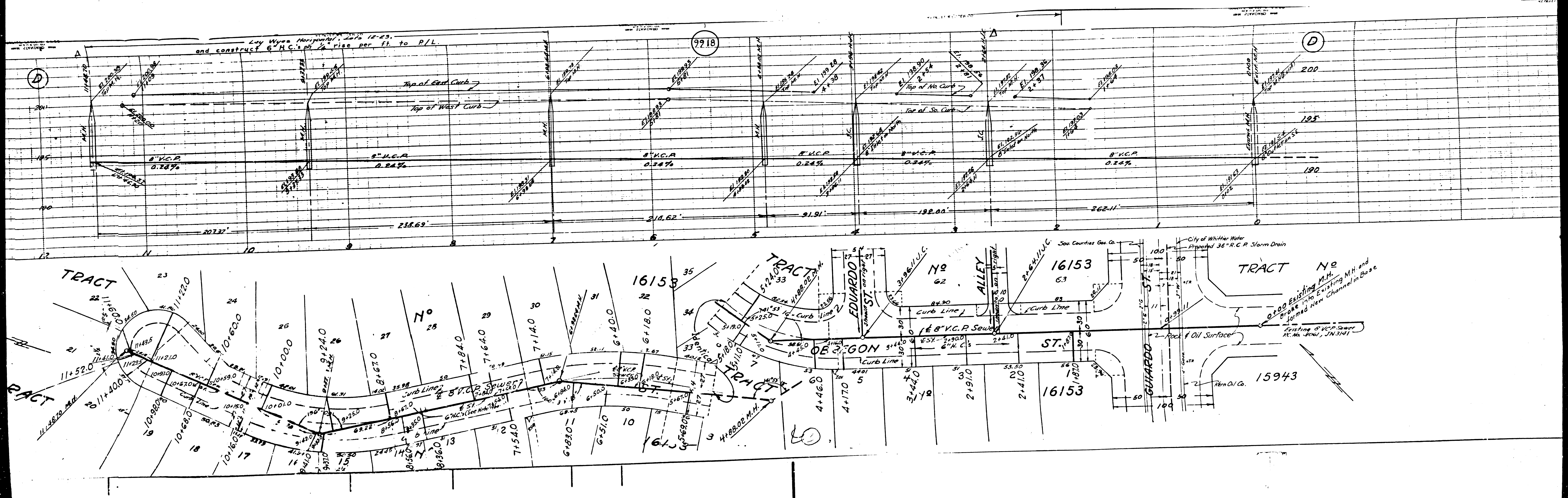
COUNTY OF LOS ANGELES, CALIFORNIA

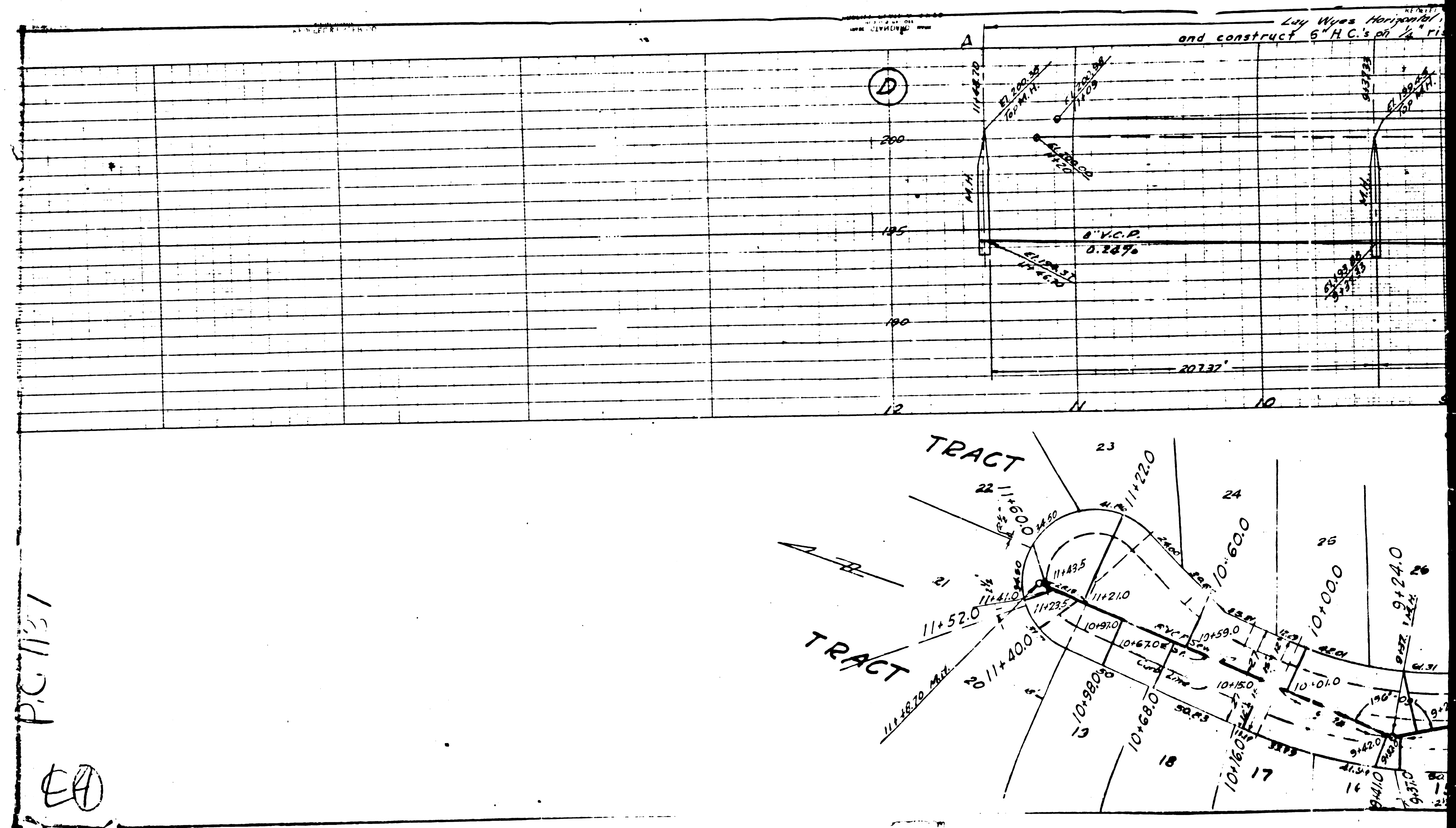
APPROVED: *[Signature]*
 COUNTY ENGINEER

APPROVED: *[Signature]*
 CHIEF ENGINEER OF COUNTY SANITATION DISTRICT 4-B

CHECKED BY: *[Signature]*
 OFFICE OF COUNTY ENGINEER







PC 1137

EA