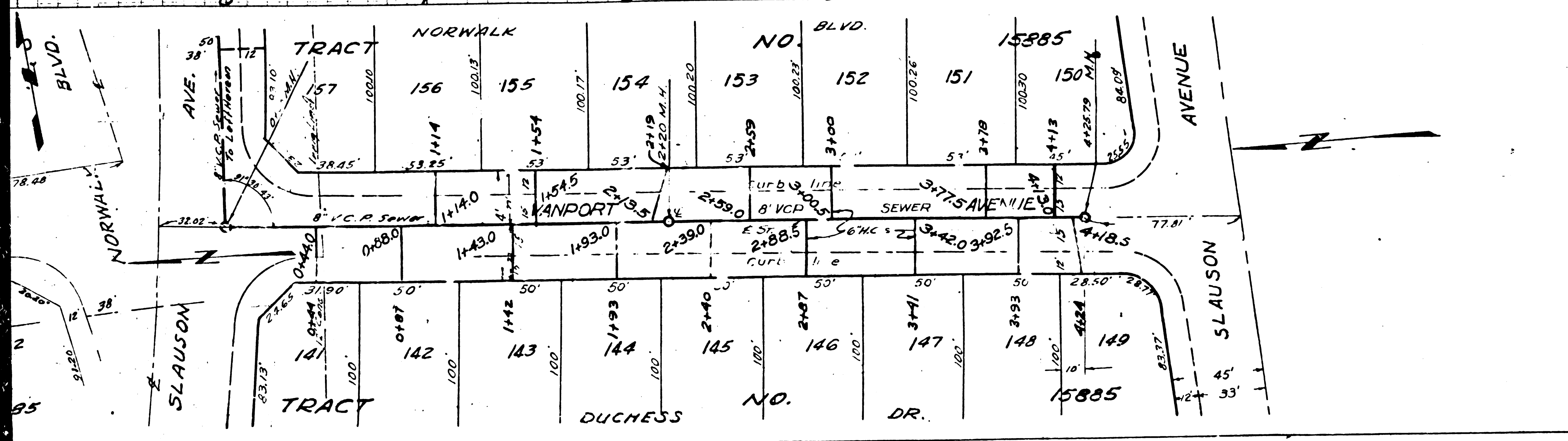


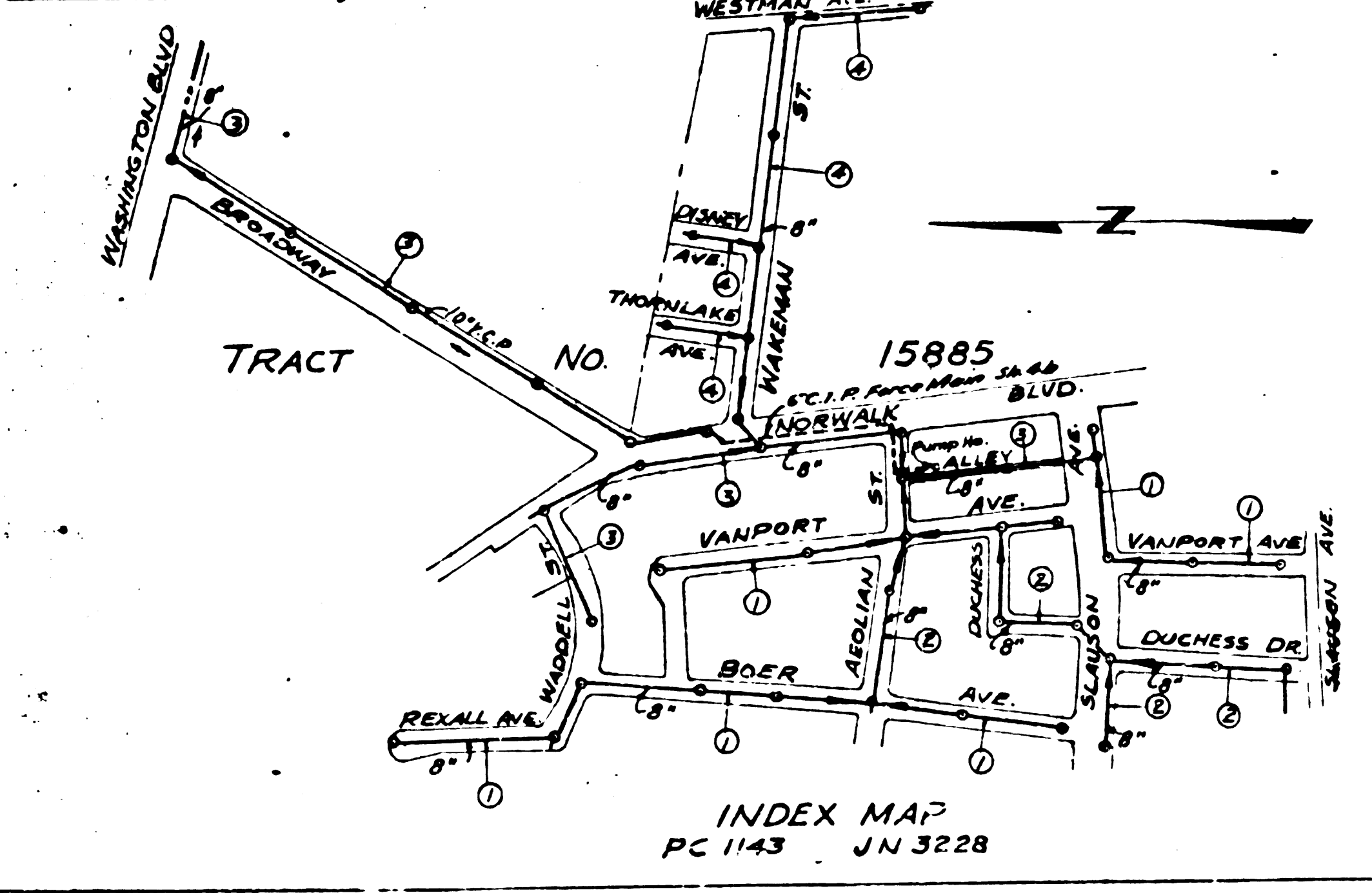
NOTE:  
Approval of this plan by the County of Los Angeles does not constitute a representation as to the accuracy of the location of, or the existence or non-existence of, any underground utility, pipe, or structure within the limits of this project.  
Provide stakes on the property lines or property lines produced, of right angles to the sewer line at the center-line of each manhole.



10,925

USE STANDARD STRENGTH PIPE EXCEPT AS NOTED  
 USE CEMENT MORTAR FOR ALL VITRIFIED CLAY PIPE JOINTS  
 SHOULDER FOUR FEET OF SEWER AT POINTS OF INTERFERENCE WITH POLES AS PER S-1115  
 CONSTRUCT HOUSE CONNECTIONS WITH INVERT AT CURB LINE 18" FEET BELOW CURB GRADE EXCEPT AS NOTED  
 ALL STRUCTURES SHALL BE BRICK SEWER STRUCTURES AS PER PLAN NO. S-1104. *Exception noted*  
 USE STANDARD MANHOLE FRAMES AND COVERS AS PER PLAN NO. S-1117  
 CONSTRUCT TOPS OF ALL STRUCTURES IN RIGHTS OF WAY 18" ABOVE FINISHED GRADE  
 RESURFACE ALL TRENCHES WITHIN PAVED AREA TO MEET LOS ANGELES COUNTY ROAD DEPT. OR STATE HIGHWAY REQUIREMENTS

NO REVISIONS SHALL BE MADE IN THESE PLANS WITHOUT APPROVAL OF THE COUNTY ENGINEER. NO REPRESENTATIVE OF THE COUNTY ENGINEER WILL SURVEY OR LAY OUT ANY PORTION OF THE WORK.  
 THE OWNER OR HIS AUTHORIZED REPRESENTATIVE SHALL FURNISH THE COUNTY ENGINEER WITH GRADE SHEETS AND STATIONS OF ALL HOUSE CONNECTIONS AND Y BRANCHES AND SHALL PROVIDE STAKES FOR THEM AT THEIR PROPER LOCATIONS WITH STATIONING PLAINLY MARKED. ANY CHANGE OF LOCATION SHALL BE REQUESTED IN WRITING BY THE OWNER OR HIS REPRESENTATIVE.



1

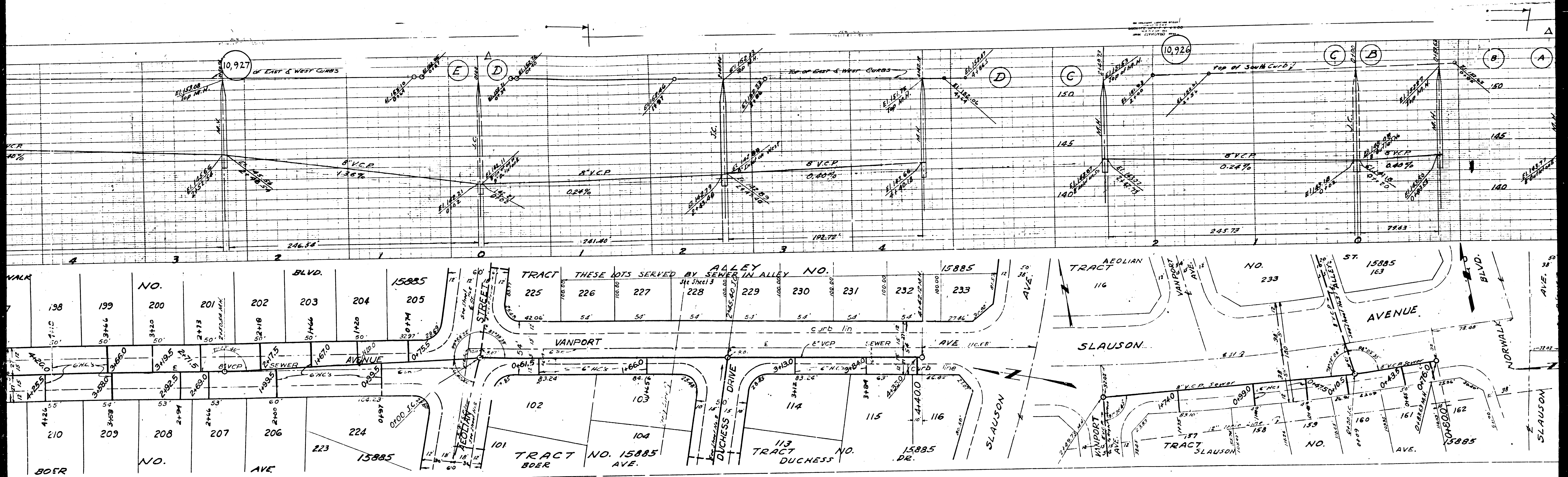
PROFILE ALIGNMENT AND GRADE OF  
**SANITARY SEWERS**  
 TO BE CONSTRUCTED IN  
 TRACT NO. 15885  
 REKALL AVENUE  
 NORTH OF WADDELL ST.  
 WADDELL STREET  
 BETWEEN BOER AVE. & REKALL AVE.  
 BOER AVENUE  
 BETWEEN SLAUSON AVE. & WADDELL ST.  
 SLAUSON AVENUE  
 BETWEEN VANPORT AVE. & NORWALK BLVD.  
 VANPORT AVENUE  
 BETWEEN SLAUSON AVE. & BOER AVE.  
 PRIVATE CONTRACT NO. 1143  
 W. S. 37  
 SHEET 1 OF 4 SHEETS  
 SCALE: VERT. 1"=4'  
 HORIZ. 1"=40'

PREPARED IN THE OFFICES OF  
**KEMMERER ENG. CO.**  
 BY: *John M. Kemmerer*  
 REG. C. E. NO. 572  
 APPROVED JAN 24 1959  
 SEAL

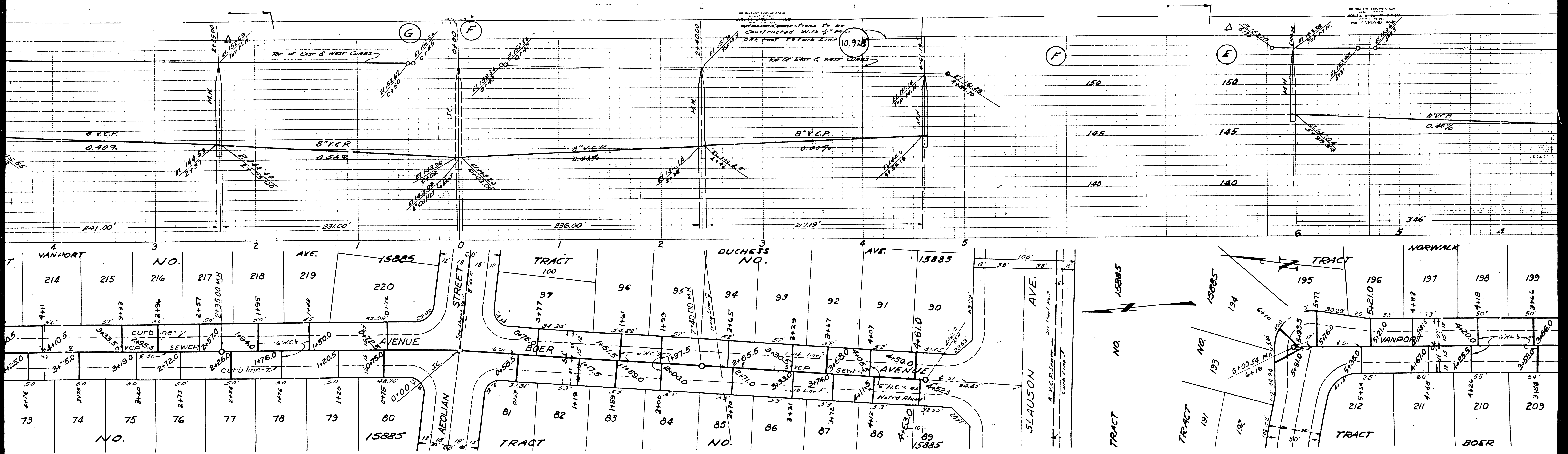
FOR LEGEND  
 SEE PLAN NO. S-1104

NOTE:  
 GRADES TO WHICH THIS IMPROVEMENT IS TO BE CONSTRUCTED ARE SHOWN ON PLANS AND PROFILES. GRADE POINTS FOR TOP OF CURB, CENTER LINE OF STREET OR CENTER LINE OF ALLEY ARE SHOWN BY CIRCLES ON PROFILES. AT ALL POINTS BETWEEN DESIGNATED POINTS THIS GRADE SHALL BE ESTABLISHED SO AS TO CONFORM TO A STRAIGHT LINE DRAWN BETWEEN SAID DESIGNATED POINTS.  
 ELEVATIONS ARE IN FEET ABOVE U. S. S. DATUM OR MEAN SEA LEVEL.  
 THIS DRAWING AND THE DATA HEREON ARE HEREBY MADE A PART OF THE SPECIFICATIONS. BEFORE WORK CAN BE STARTED THE CONTRACTOR MUST OBTAIN A PERMIT TO RECAVATE IN COUNTY STREETS FROM THE L. A. COUNTY ROAD DEPT. 211 SOUTH MAIN STREET, LOS ANGELES, AND MAKE A DEPOSIT WITH THE COUNTY ENGINEER, ROOM 330 AT 105 WEST STREET, SUFFICIENT TO COVER THE COST OF CONSTRUCTION INSPECTION AND RECORD PLANS. A PERMIT MUST BE OBTAINED FROM THE STATE OF CALIFORNIA, DIVISION OF HIGHWAYS, 808 STATE BUILDING, AFTER MAKING THE DEPOSIT WITH THE COUNTY ENGINEER.

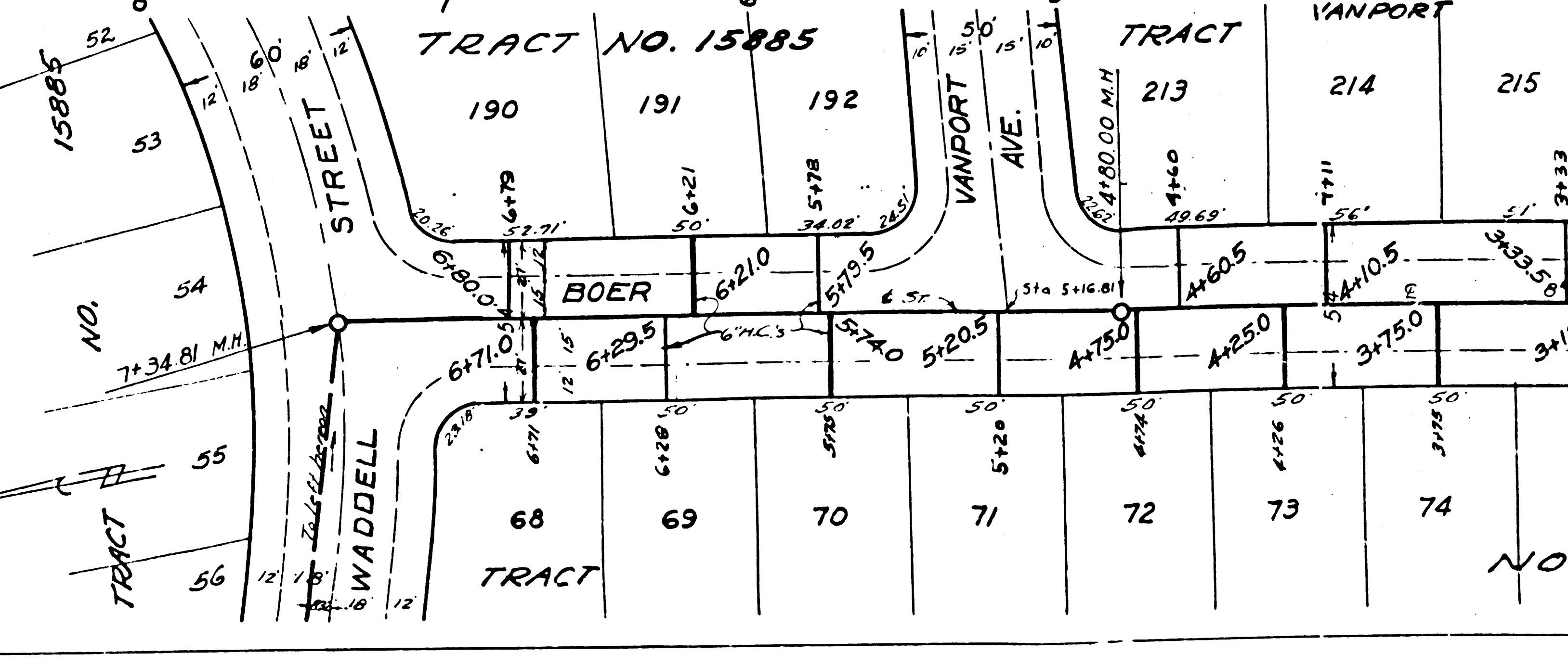
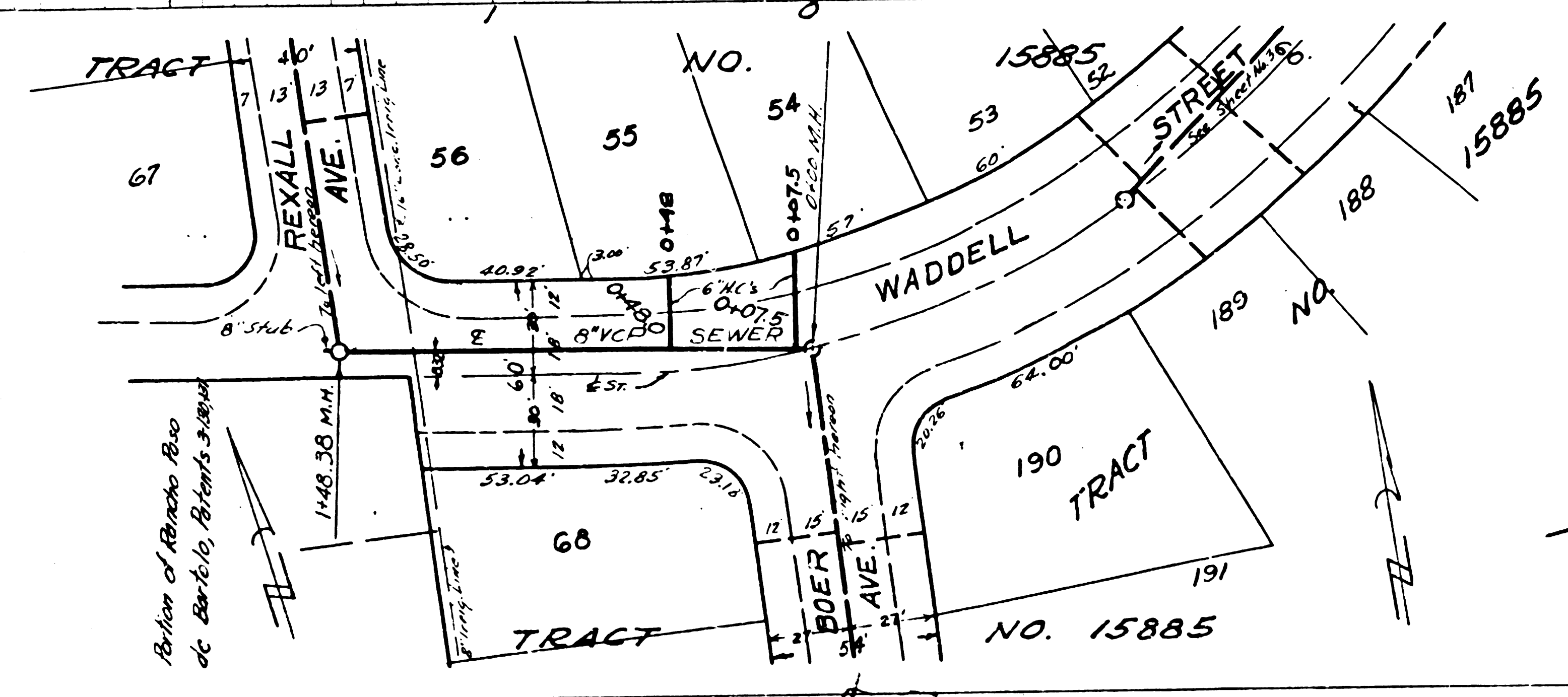
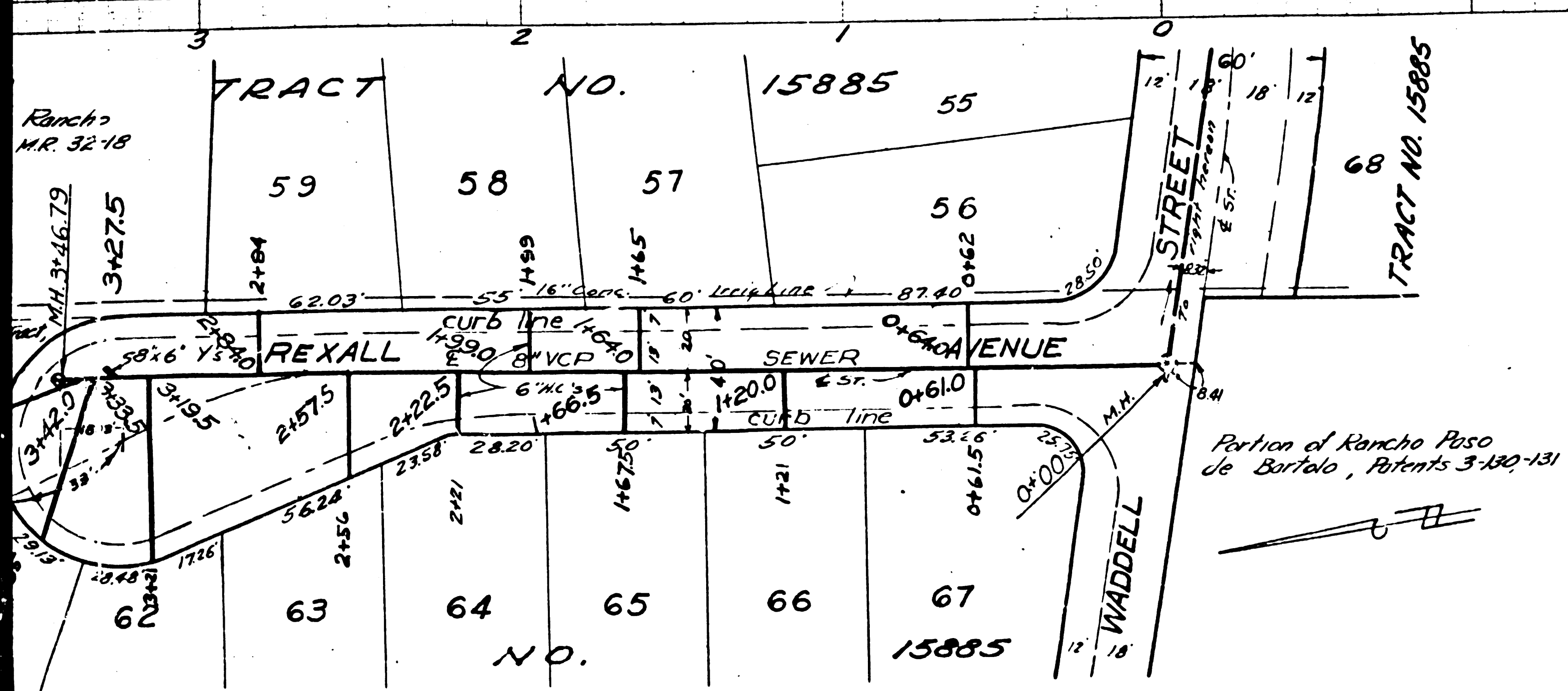
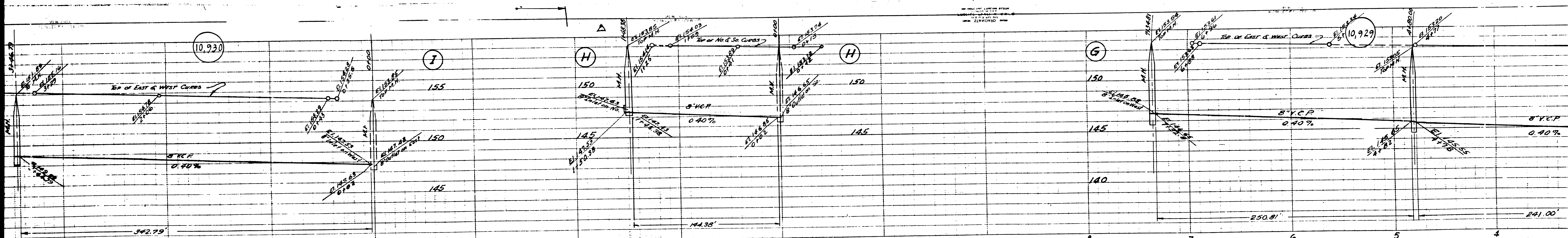
COUNTY OF LOS ANGELES, CALIFORNIA  
 APPROVED *William J. Rothen*  
 CHIEF DEPUTY COUNTY ENGINEER  
 APPROVED *John M. Kemmerer*  
 COUNTY ENGINEER OF COUNTY OF LOS ANGELES, DISTRICT NO. 2  
 CHECKED BY *James T. Rothen* 1/24/59  
 OFFICE OF COUNTY ENGINEER, ROOM 330 AT 105 WEST STREET



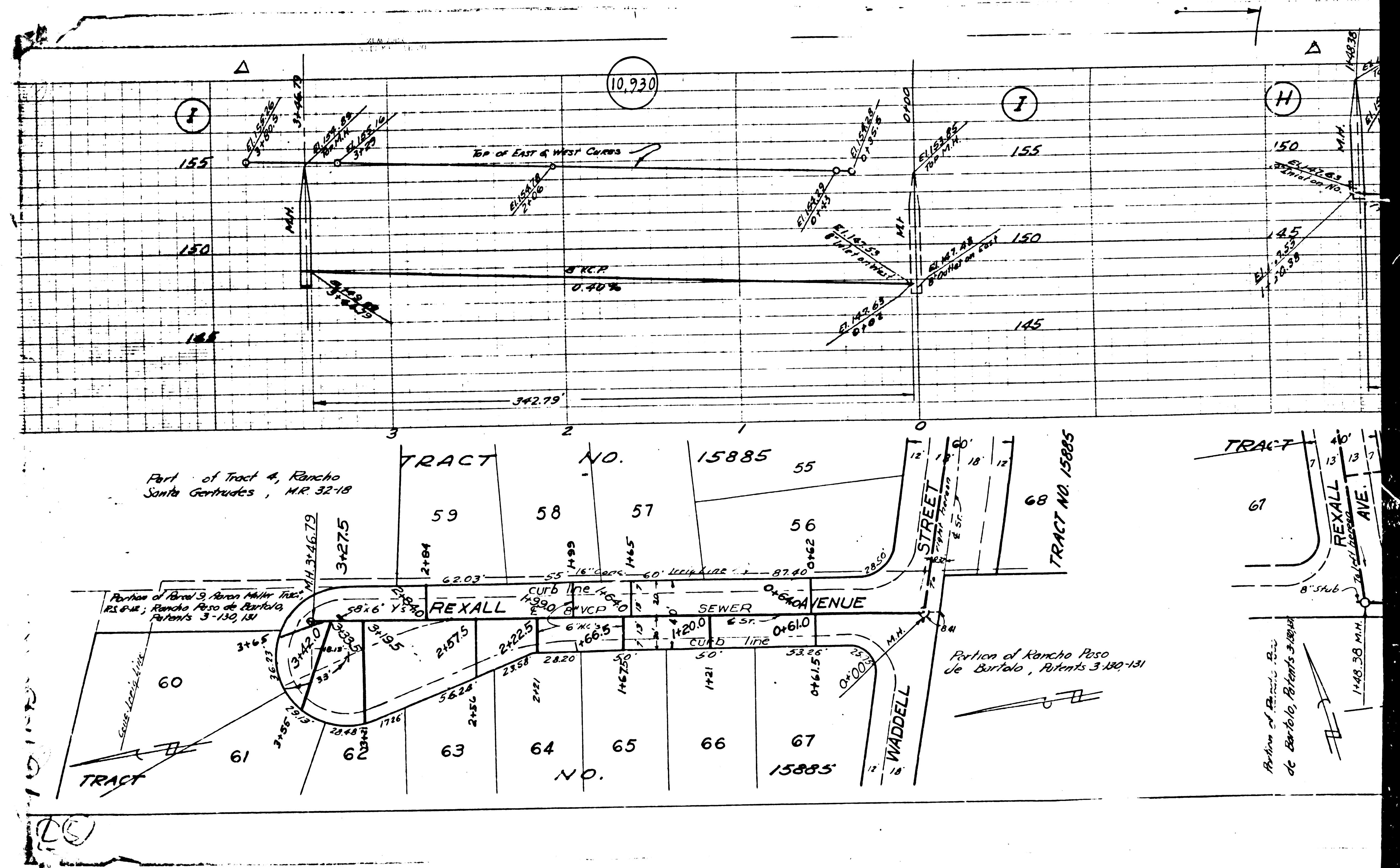
20

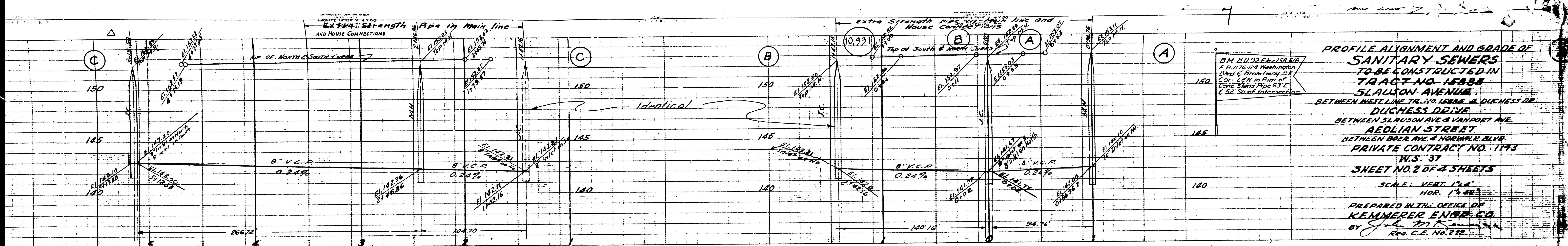


③

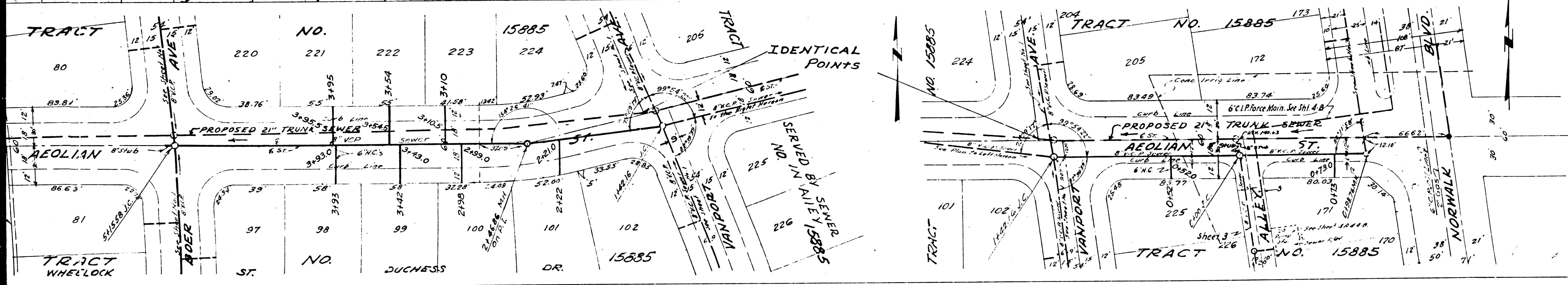


4



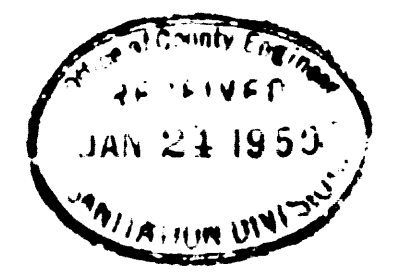


**PROFILE ALIGNMENT AND GRADE OF  
SANITARY SEWERS  
TO BE CONSTRUCTED IN  
TRACT NO. 15885  
SLAUSON AVENUE  
BETWEEN WEST LINE TR. NO. 15886 & DUCHESS DR.  
DUCHESS DRIVE  
BETWEEN SLAUSON AVE & VANPORT AVE.  
AEOLIAN STREET  
BETWEEN BAKER AVE & NORWALK BLVD.  
PRIVATE CONTRACT NO. 1193  
W.S. 37  
SHEET NO. 2 OF 4 SHEETS  
SCALE: VERT. 1"=4'  
HOR. 1"=40'  
PREPARED IN THE OFFICE OF  
KEMMERER ENBR. CO.  
BY *J. D. Kemmerer*  
REG. C.E. NO. 872**



FOR LEGEND  
SEE PLAN S. 9-64

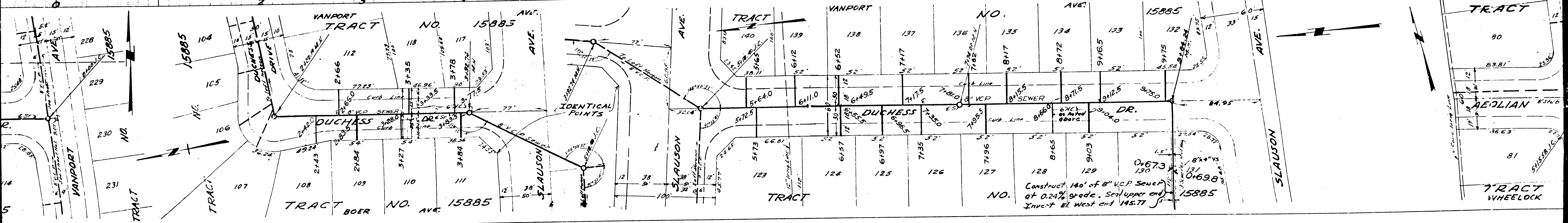
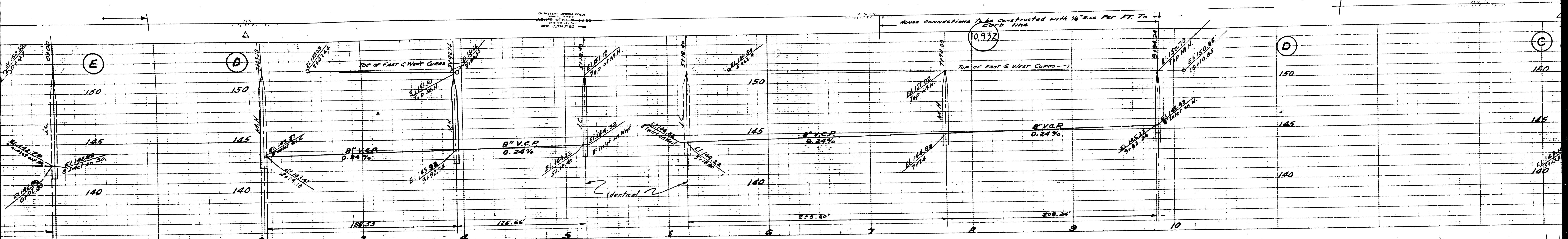
NOTE: Approval of this plan by the County of Los Angeles does not constitute a representation as to the accuracy of the location of, or the existence or non-existence of any underground utility, pipe or structure within the limits of this project.



APPROVED *A. H. Haggerty*  
CHIEF DEPUTY COUNTY ENGINEER.

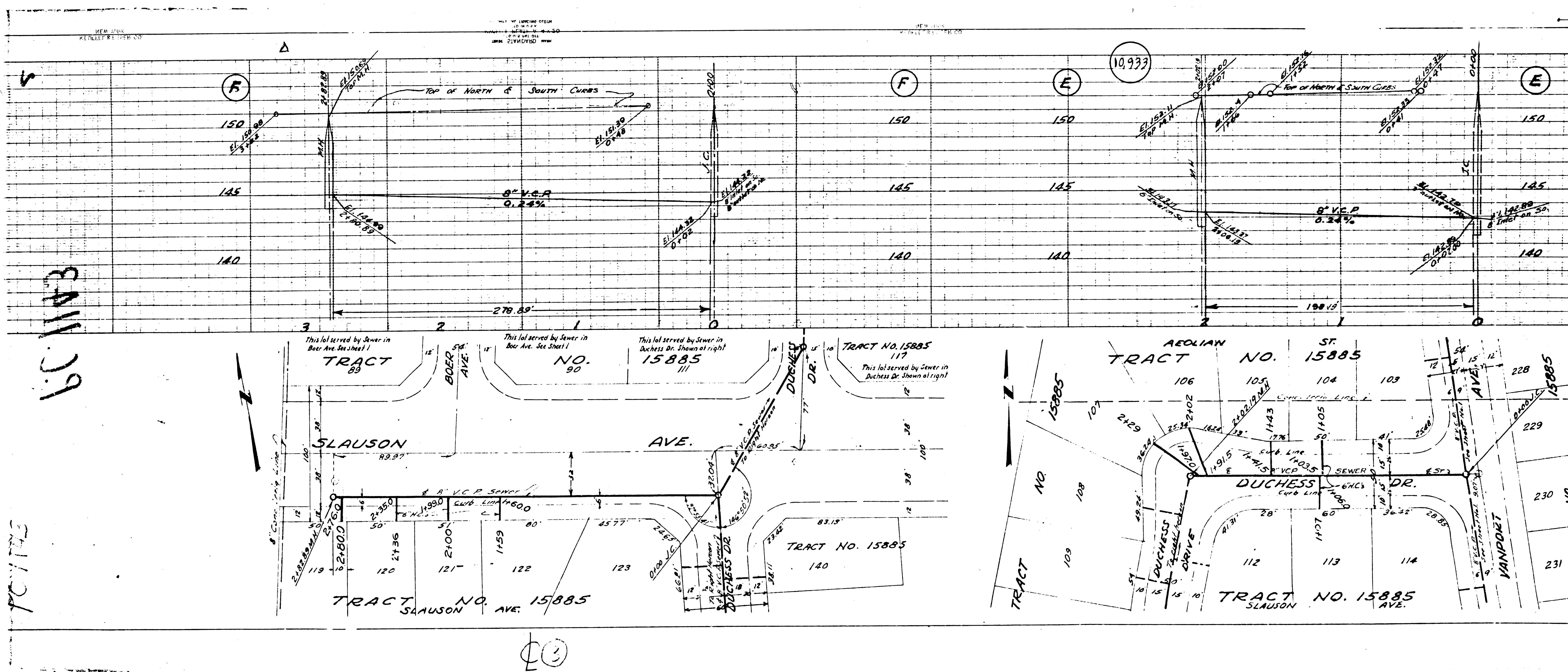
APPROVED *W. C. ...*  
CHIEF ENGINEER COUNTY  
SANITATION DISTRICT NO. 2.

CHECKED BY *James T. ...* 1/21/50  
OFFICE OF COUNTY ENGINEER REG. C.E. MONTH



Construct 140' of 8" V.C.P. Sewer  
at 0.24% grade. Seal upper end  
Invert at West end 145.77

①

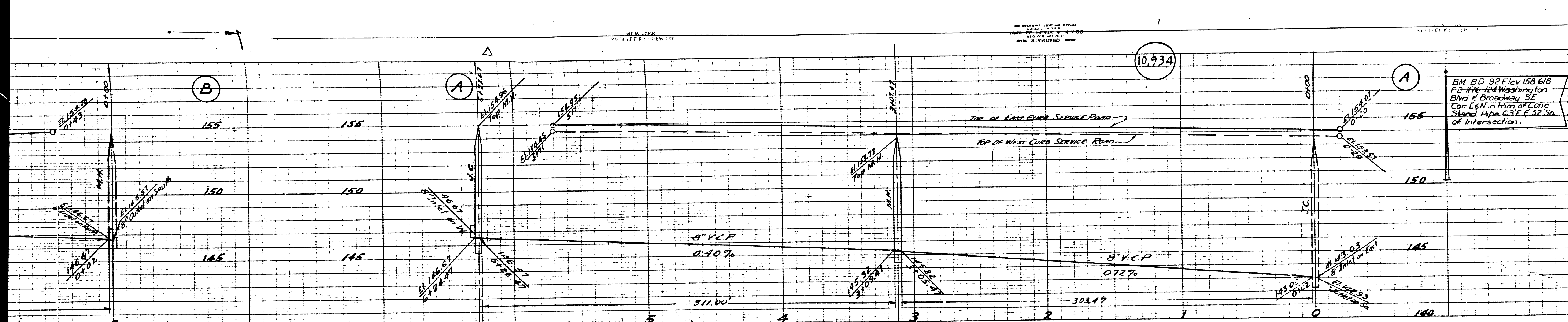


601143

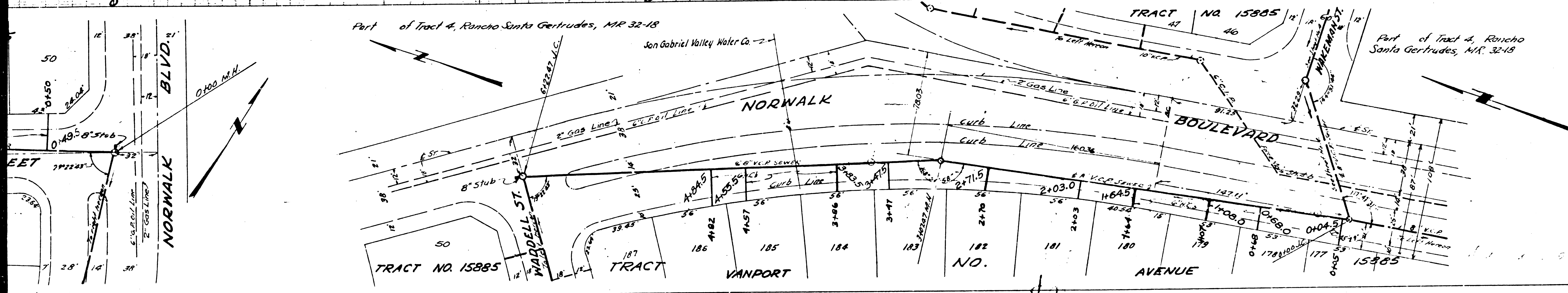
PC 1742

20





**PROFILE ALIGNMENT AND GRADE OF  
SANITARY SEWERS  
TO BE CONSTRUCTED IN  
TRACT NO. 15885  
BROADWAY  
BETWEEN WASHINGTON BLVD. & NORWALK BLVD.  
NORWALK BOULEVARD (L.S. SIDE)  
BETWEEN BROADWAY AND WALKMAN ST.  
NORWALK BOULEVARD  
BETWEEN WALKMAN ST. & REBLIAN ST.  
WASHINGTON BOULEVARD  
BETWEEN BROADWAY & 83 ELY OF BROADWAY  
WADDELL STREET  
BETWEEN NORWALK BLVD. & 225 W. OF NORWALK BLVD.  
NORWALK BOULEVARD  
BETWEEN WALKMAN ST. & WADDELL ST.  
ALLEY  
BETWEEN REBLIAN ST. & LAUGON AVE  
PRIVATE CONTRACT NO. 1143  
W.S. ST.  
SHEET NO. 8 OF 4 SHEETS  
SCALE: VERT. 1" = 4'  
HOR. 1" = 40'**



PREPARED IN THE OFFICE OF  
**KENNERER ENGR. CO.**  
BY *John W. Kennerer*  
Reg. C.E. No. 278.

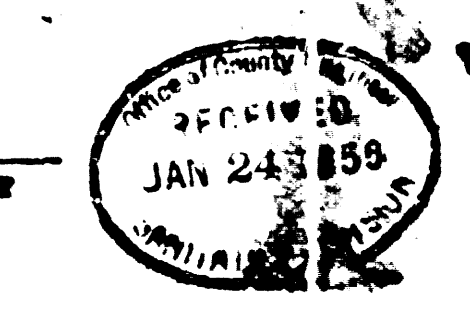
**FOR LEGEND  
SEE PLAN S-6-64**

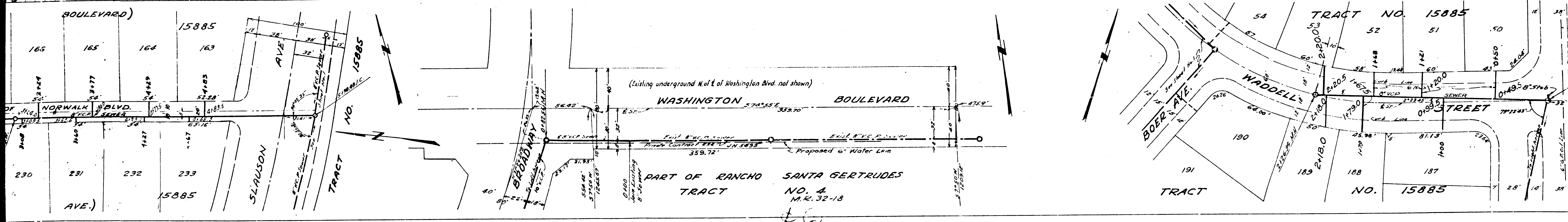
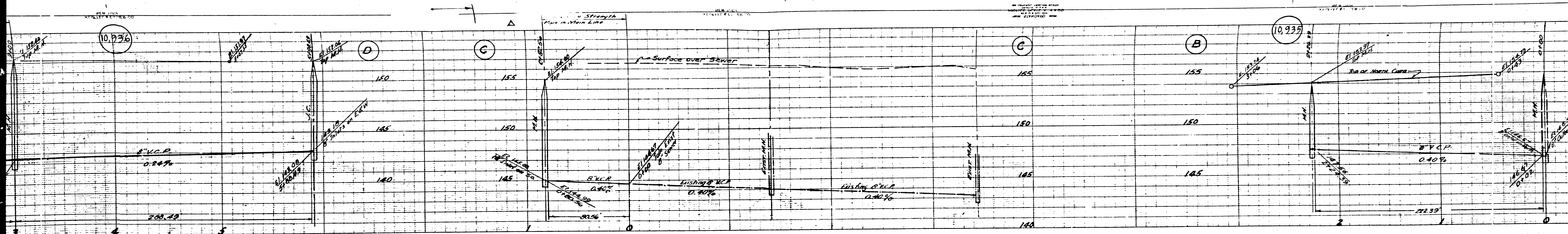
NOTE: Approval of this plan by the County of Los Angeles does not constitute a representation as to the accuracy of the location of or the existence or non-existence of any underground utility, pipe, or structure within the limits of this project.

APPROVED *Adelgondo*  
CHIEF DEPUTY COUNTY ENGINEER

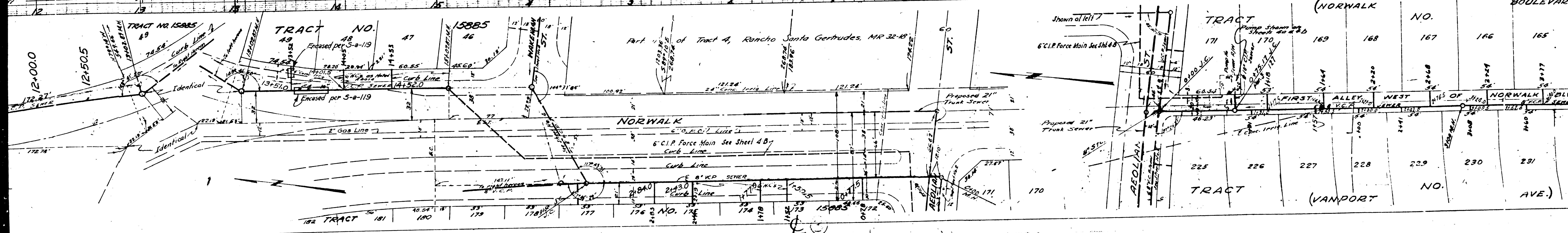
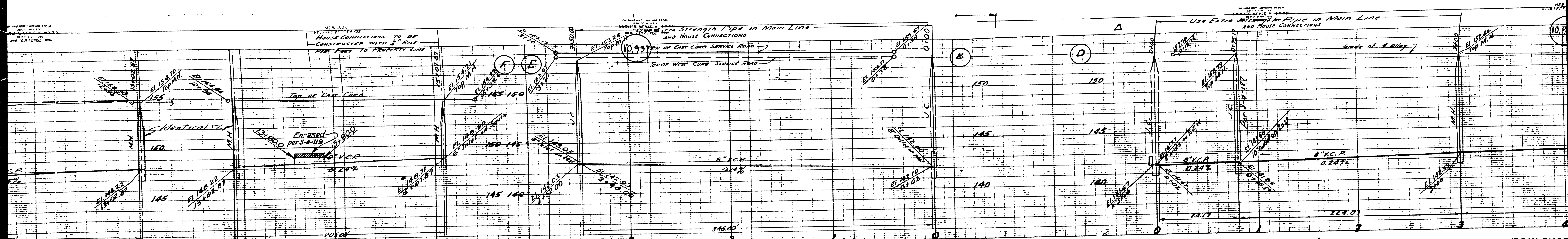
APPROVED *William*  
CHIEF ENGINEER COUNTY  
SANITATION DISTRICT NO. 8

CHECKED BY *James T. R...*  
OFFICE OF COUNTY ENGINEER SAN. DIST. NO. 1103

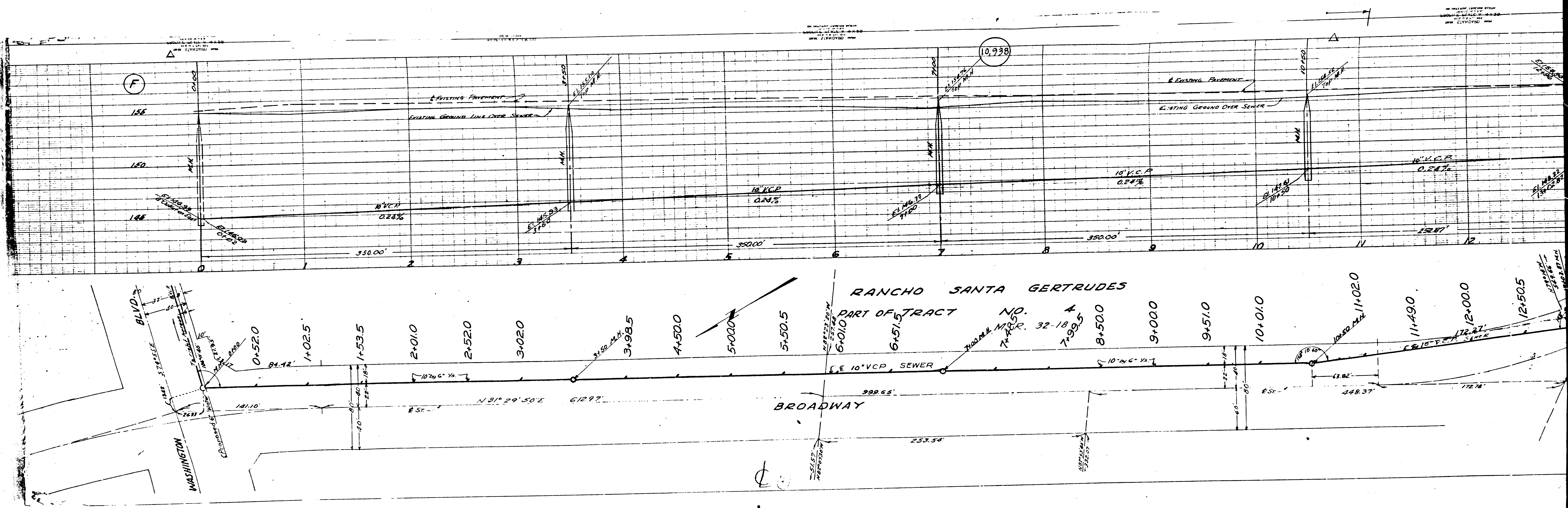


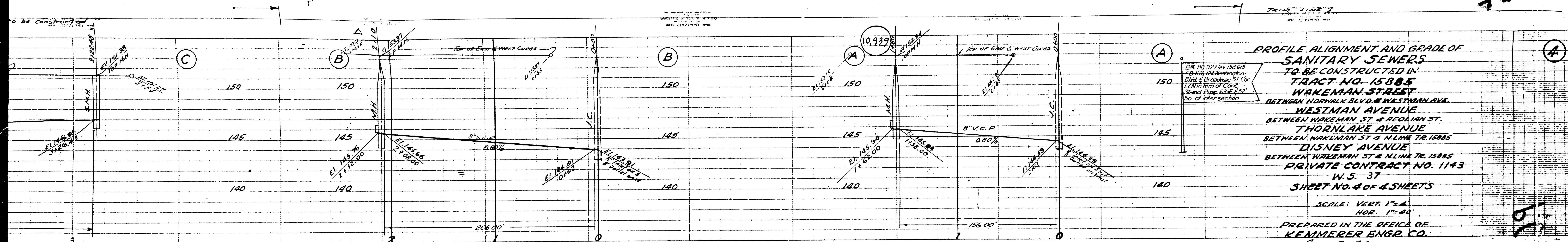


EG



TRACT (NORWALK)		TRACT (VAMPOR)	
NO.	NO.	NO.	NO.
169	168	225	226
167	166	227	228
165	164	229	230
163	162	231	232
161	160	233	234
159	158	235	236
157	156	237	238
155	154	239	240
153	152	241	242
151	150	243	244
149	148	245	246
147	146	247	248
145	144	249	250
143	142	251	252
141	140	253	254
139	138	255	256
137	136	257	258
135	134	259	260
133	132	261	262
131	130	263	264
129	128	265	266
127	126	267	268
125	124	269	270
123	122	271	272
121	120	273	274
119	118	275	276
117	116	277	278
115	114	279	280
113	112	281	282
111	110	283	284
109	108	285	286
107	106	287	288
105	104	289	290
103	102	291	292
101	100	293	294
99	98	295	296
97	96	297	298
95	94	299	300
93	92	301	302
91	90	303	304
89	88	305	306
87	86	307	308
85	84	309	310
83	82	311	312
81	80	313	314
79	78	315	316
77	76	317	318
75	74	319	320
73	72	321	322
71	70	323	324
69	68	325	326
67	66	327	328
65	64	329	330
63	62	331	332
61	60	333	334
59	58	335	336
57	56	337	338
55	54	339	340
53	52	341	342
51	50	343	344
49	48	345	346
47	46	347	348
45	44	349	350
43	42	351	352
41	40	353	354
39	38	355	356
37	36	357	358
35	34	359	360
33	32	361	362
31	30	363	364
29	28	365	366
27	26	367	368
25	24	369	370
23	22	371	372
21	20	373	374
19	18	375	376
17	16	377	378
15	14	379	380
13	12	381	382
11	10	383	384
9	8	385	386
7	6	387	388
5	4	389	390
3	2	391	392
1	0	393	394





**PROFILE ALIGNMENT AND GRADE OF  
SANITARY SEWERS  
TO BE CONSTRUCTED IN  
TRACT NO. 15885  
WAKEMAN STREET  
BETWEEN NORWALK BLVD. & WESTMAN AVE.  
WESTMAN AVENUE  
BETWEEN WAKEMAN ST. & REOLIAN ST.  
THORNLAKE AVENUE  
BETWEEN WAKEMAN ST. & ALLINE TR. 15885  
DISNEY AVENUE  
BETWEEN WAKEMAN ST. & ALLINE TR. 15885  
PRIVATE CONTRACT NO. 1143  
W.S. 37  
SHEET NO. 4 OF 4 SHEETS**

SCALE: VERT. 1"=4'  
HOR. 1"=80'  
PREPARED IN THE OFFICE OF  
**KEMMER ENGR. CO.**  
BY *John M. Kemmer*  
REG. C.E. NO. 272

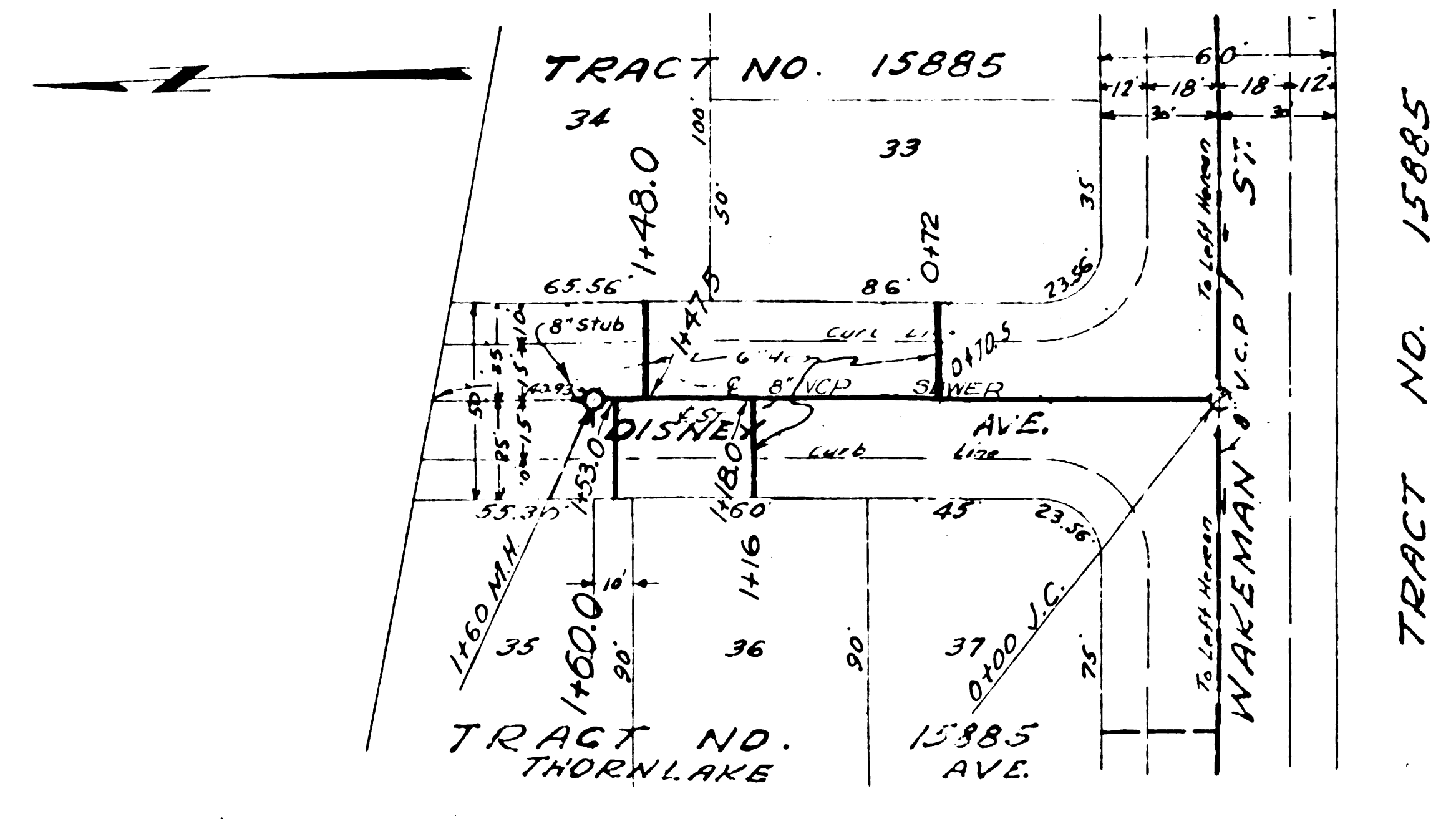
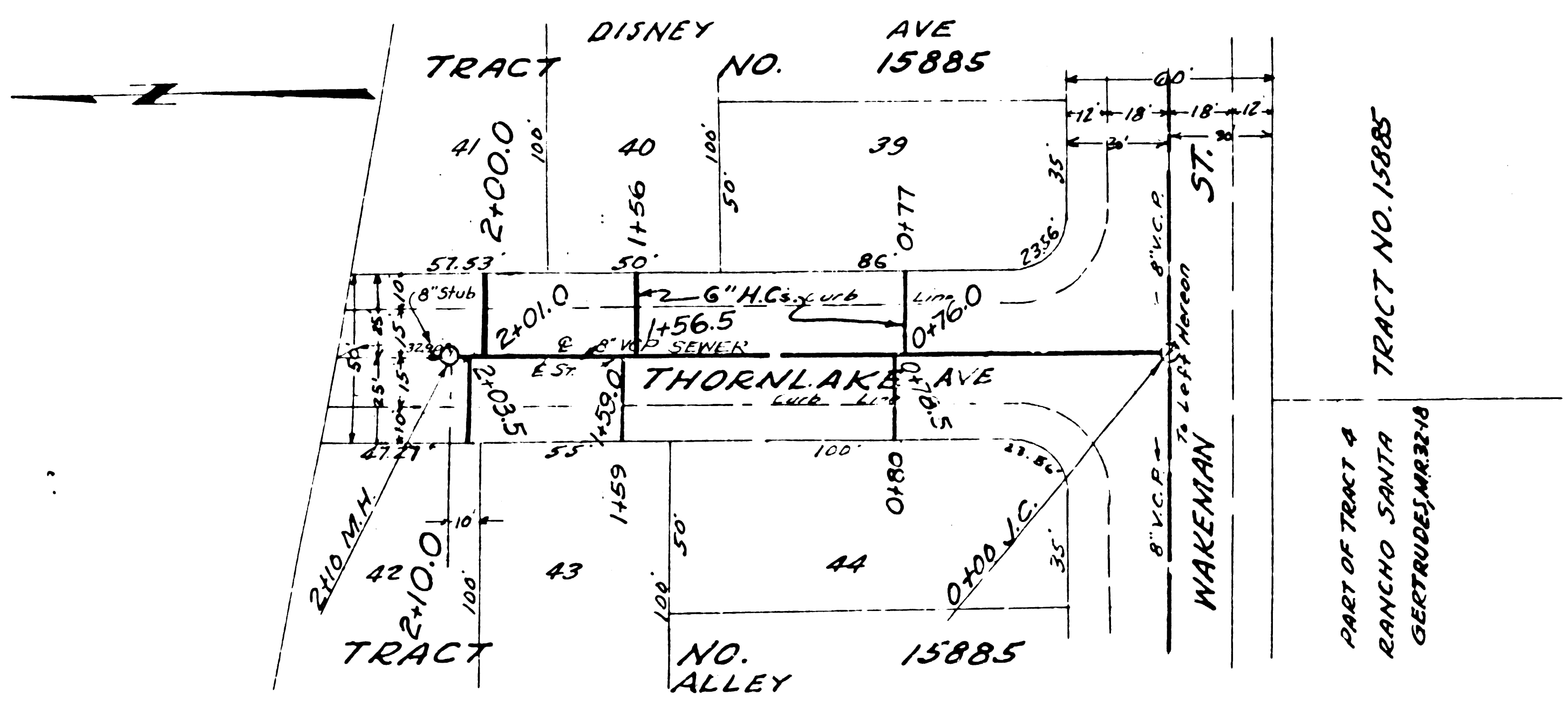
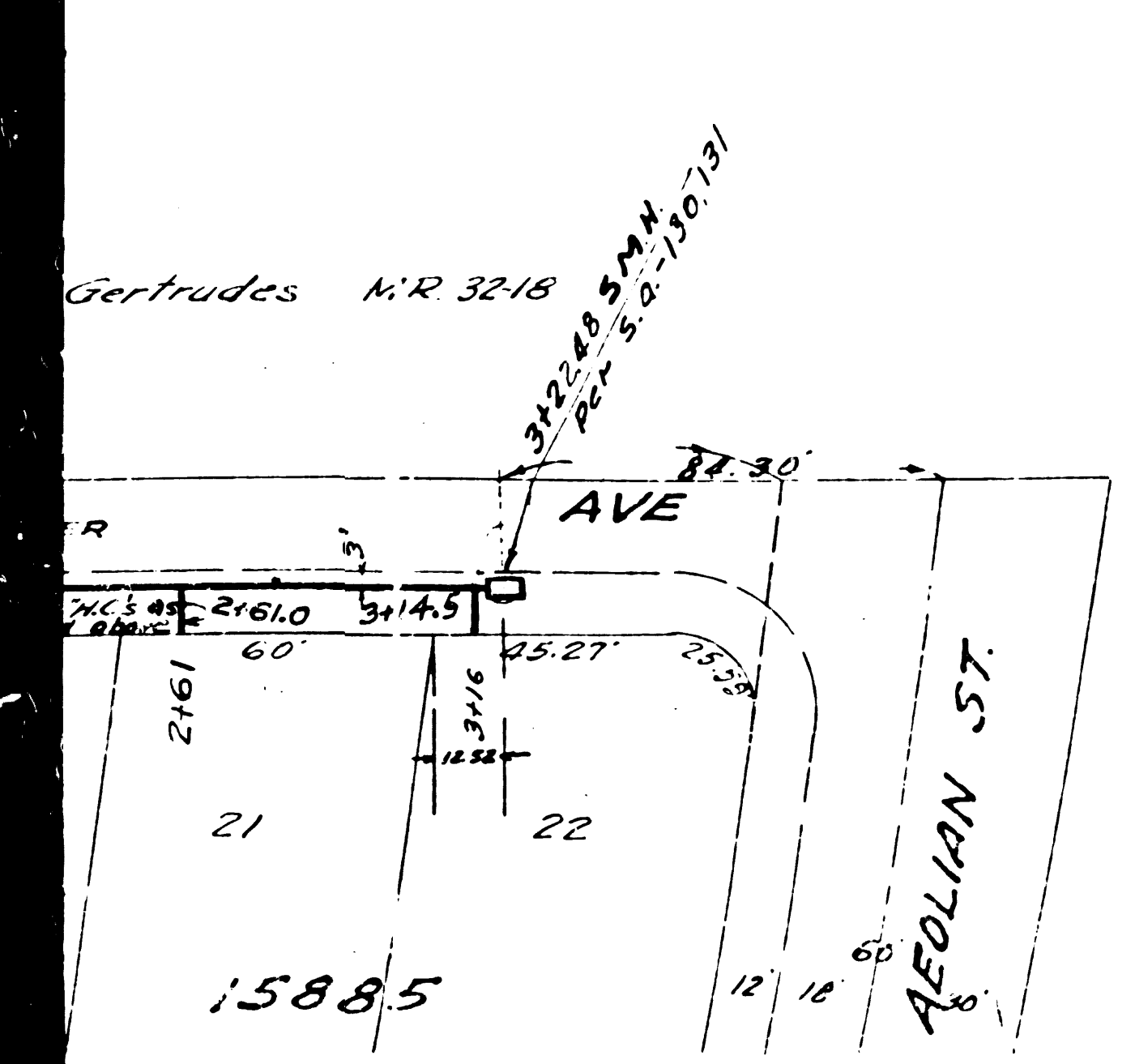
FOR LEGEND  
SEE PLAN S-0-64

APPROVED *A. Gregory*  
CHIEF DEPUTY COUNTY ENGINEER

APPROVED *William*  
CHIEF ENGINEER COUNTY  
SANITATION DISTRICT NO. 2

CHECKED BY *James T. Roston* 1-9-50  
OFFICE OF COUNTY ENGINEER REG. C.E. NO. 1103

NOTE: Approval of this plan by the County of Los Angeles does not constitute a representation as to the accuracy of the location of, or the existence or non-existence of, any underground utility, pipe, or structure within the limits of this project.



1143

