

B.M. Elev. 362.40 Cross on West side top of Fire Hydrant North side of Longden Ave. 310' East of Larkfield Ave.

1. Use Standard Manhole Frames and Covers, S-a-117
2. Use Standard Strength Pipe
3. Use Cement mortar for all vitrified clay pipe joints
4. All structures shall be brick sewer structures, S-a-104
5. Resurface all trench within paved area to meet L.A. County Road Department requirements
6. Construct House Connections with invert at Property Line 5 feet below curb grade, except as noted.

**PROFILE ALIGNMENT AND GRADE OF
SANITARY SEWERS
TO BE CONSTRUCTED IN
LONGDEN AVENUE
FAIRGREEN AVENUE
HEATHER HEIGHTS AVENUE
IN TRACT NO. 16059**

PRIVATE CONTRACT NO. 1150
W.S. 46
SEPT. 1949

SHEET 1 OF 1 SHEETS
PREPARED IN THE OFFICE OF
HAROLD A. BARNETT

BY *Harold A. Barnett*
RE. 1216
NOV 22 1949
FOR LEGEND
SEE PLAN NO. S-9-64

NOTE:
No representative of the County Engineer will survey or lay out any portion of the work. The owner or his authorized representative shall furnish the County Engineer with grade sheets and stations for all house connections and branches and shall provide stakes for them at their proper locations with stationing plainly marked. Any change in locations shall be requested in writing by the owner or his representative. No reasons shall be made in these plans without approval of the County Engineer.

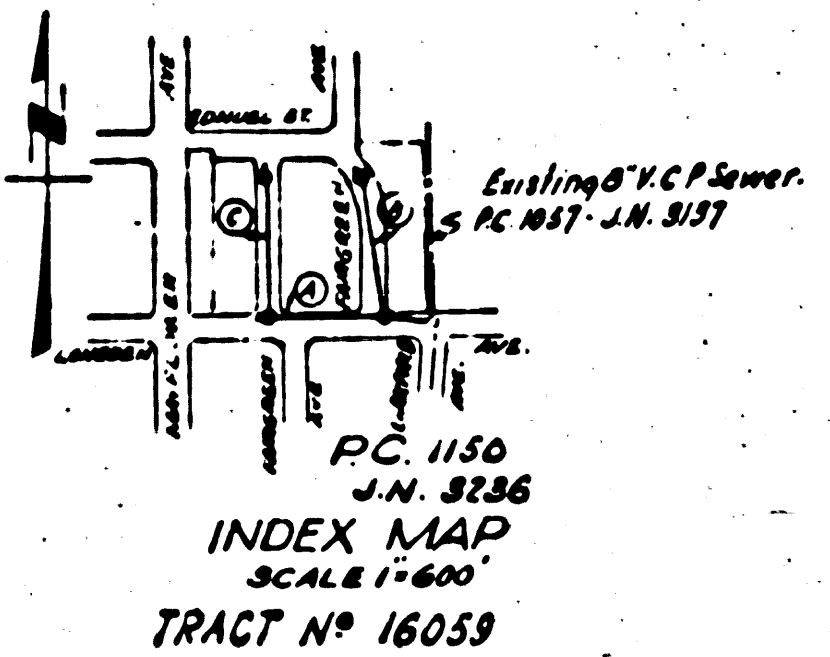
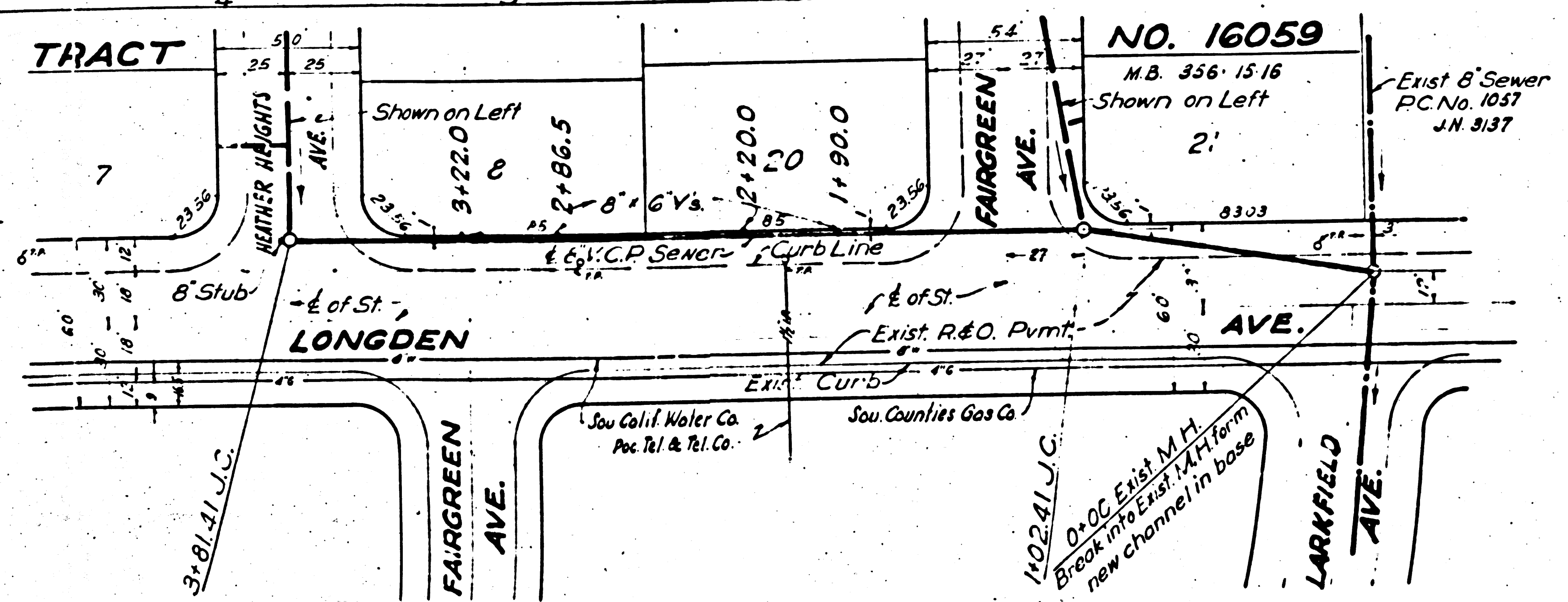
APPROVAL OF THIS PLAN BY THE COUNTY OF LOS ANGELES DOES NOT CONSTITUTE A REPRESENTATION AS TO THE ACCURACY OF THE LOCATION OF, OR THE EXISTENCE OR NON-EXISTENCE OF ANY UNDERGROUND UTILITY, PIPE OR STRUCTURE WITHIN THE LIMITS OF THIS PROJECT.

NOTE:
Grades to which this improvement is to be constructed are shown on Plans and Profile. Grade points for top of curb, center line of street or center line of alley are shown by circles on Profiles. At all points between designated points the grade shall be established so as to conform to a straight line drawn between said designated points.
Elevations are in feet above U.S.G.S. datum or mean sea level.
This drawing and the data hereon are hereby made a part of the specifications.
Work shall be constructed according to specifications on file in the office of the County Engineer and shall be prosecuted only in the presence of the County Engineer.
Before work can be started the Contractor must obtain a permit to excavate in County Streets from the L.A. County Road Dept., 211 So. Main St., and make a deposit with the County Engineer, County Engineering Dept. sufficient to cover the cost of construction inspection and record plans.
If work is to be done on a State Highway, a permit must be obtained from the State of California Division of Highways, 808 State Bldg., after making the deposit with the County Engineer.

COUNTY OF LOS ANGELES, CALIFORNIA

APPROVED *[Signature]*
COUNTY ENGINEER
APPROVED *[Signature]*
CHIEF ENGINEER OF COUNTY SANITATION DISTRICT NO. 18
CHECKED BY *[Signature]*
CHIEF OF COUNTY ENGINEERS

Checked - McLean - 12-20-49



£ 0

