

TRIM LINE

(10,016)

2

B.M. ELEV. 152.75 CURB AT N.W. COR.
WASHINGTON BLVD & ELDRIDGE AVE

- (1) USE STANDARD MANHOLE FRAME & COVER, 5'-6" I.D.
- (2) USE STANDARD STRENGTH PIPE, EXCEPT AS NOTED.
- (3) USE CEMENT MORTAR FOR ALL KITTIED CLAY PIPE JOINTS.
- (4) ALL STRUCTURES SHALL BE BRICK. SEWER STRUCTURES 5'-6" I.D.
- (5) RESURFACE ALL TRENCH WITHIN PAVED AREA TO MEET COUNTY ROAD DEPARTMENT REQUIREMENTS.

NOTE: No Representative of the County Engineer will Survey or Layout Any Portion of the Work. The Owner or His Authorized Representative should Furnish the County Engineer with Grade Sheets & Set Properly Marked Stakes for the Work. No Changes shall be Made in These Plans Without the Consent of the County Engineer. Provide Stakes on the Property Lines, or Property Lines Produced, at Right Angles to the Sewer Line at the Center Line of Each Manhole.

PROFILE, ALIGNMENT & GRADE OF
SANITARY SEWER
TO BE CONSTRUCTED IN
RANSOM STREET
BETWEEN WASHINGTON BLVD. & 215 30.

PRIVATE CONTRACT NO. 1152
W.S. 36
SHEET 2 OF 2 SHEETS
SCALE: HOR. 1" = 40' VERT. 1" = 4'
DEC. 1947

PREPARED IN THE OFFICES OF
BARNETT, HOPEN & SMITH

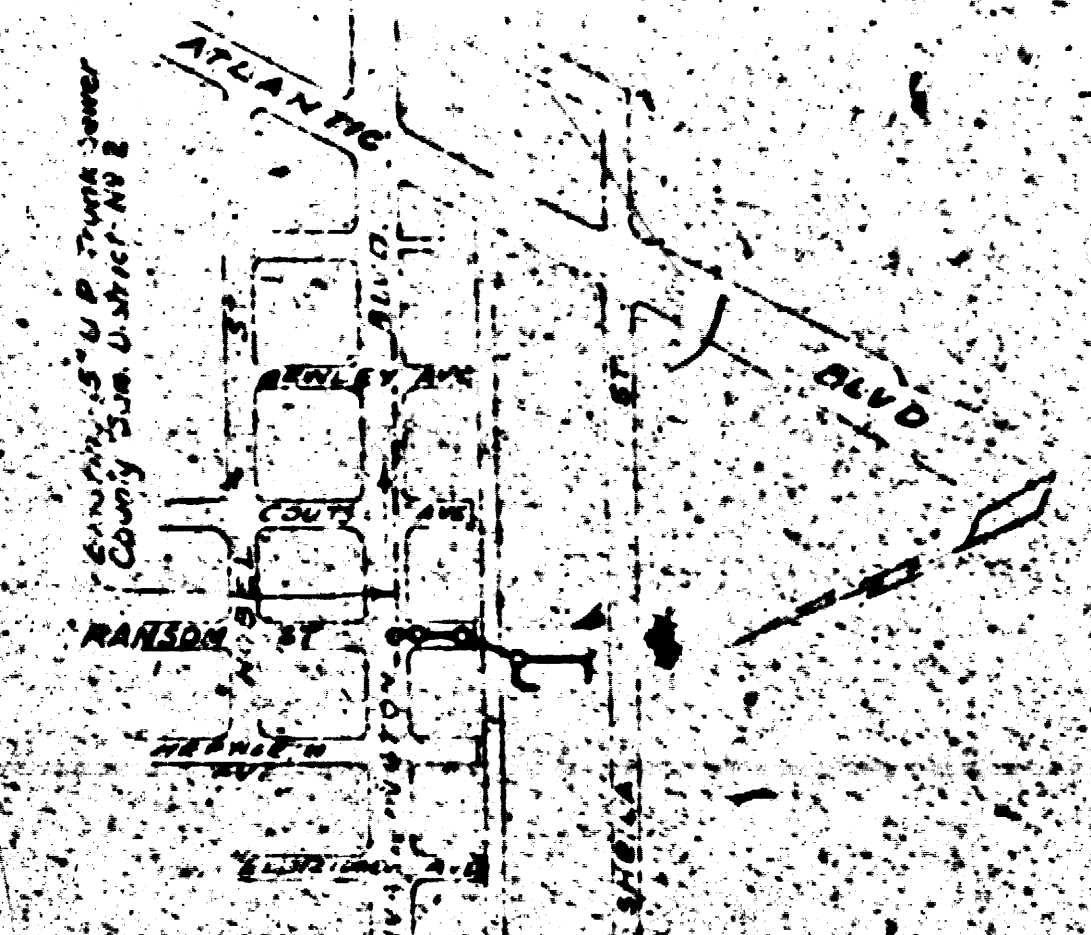
APPROVED BY *Harold A. Turner*
DEC 12 1947
JOB NO. 2754

NOTE: Grades to which this improvement is to be constructed are shown on this plan & profile. Elevations are in feet above U.S.S. Datum or Mean Sea Level. This drawing & the data hereon are hereby made a part of the specifications work shall be constructed according to specifications on file in the office of the County Engineer & shall be prosecuted only in the presence of the County Engineer. All work shall be started, the Contractor must obtain a permit to excavate in County Streets from the L.A. County Road Dept. No. 211, 30 Main Street & make a deposit with the County Engineer, 228 Los Angeles County Engineering Bldg. sufficient to cover the cost of construction, inspection & records. No work shall be started until the County of Los Angeles has received a statement of understanding, use, or structure within the limits of the street.

COUNTY OF LOS ANGELES, CALIFORNIA

APPROVED: *W. H. Gregory*
CHIEF DEPUTY COUNTY ENGINEER
APPROVED: *Bill Quinn*
ENGR. IN CHARGE SANITATION DISTRICT

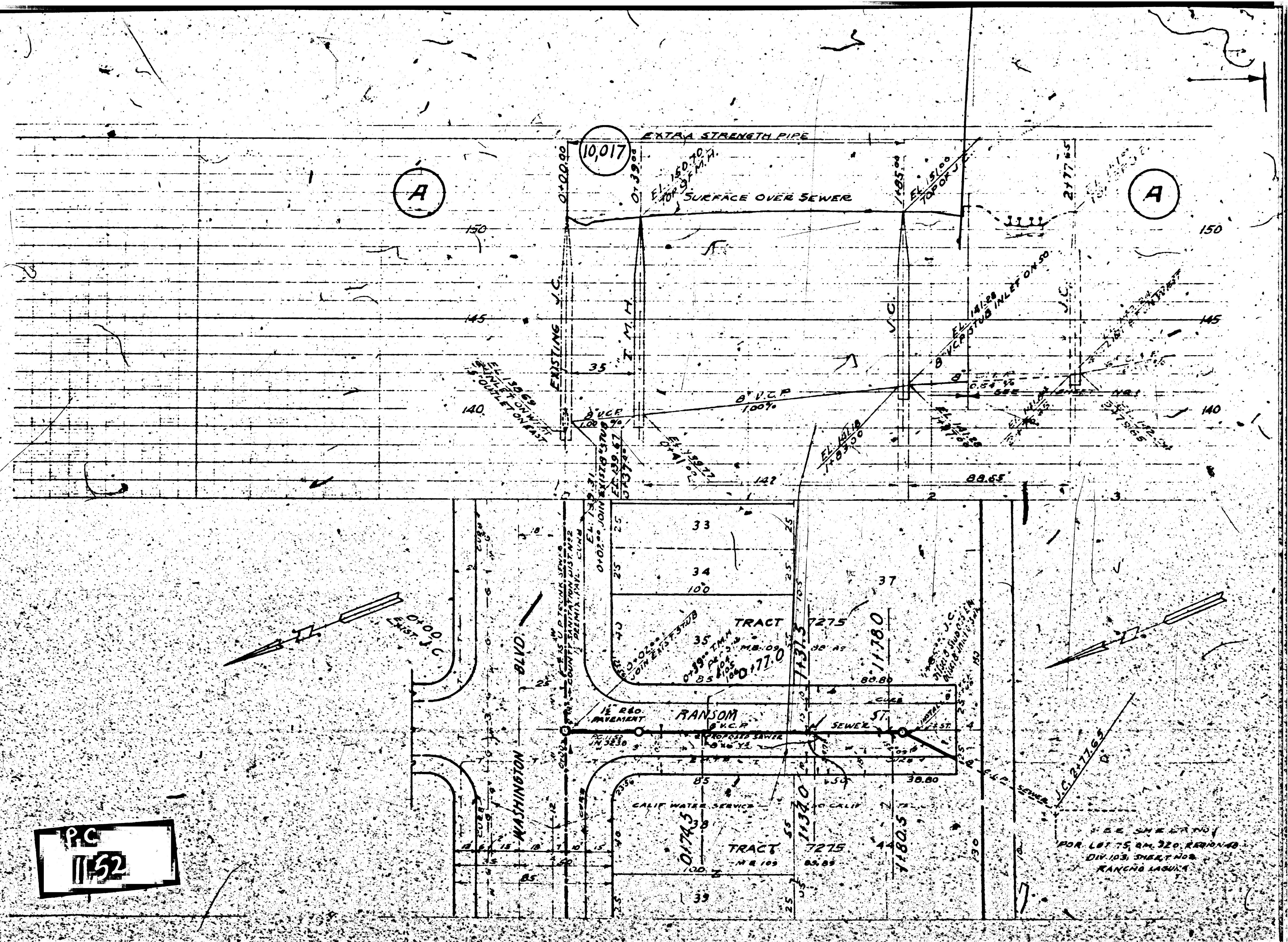
APPROVED FOR THE COLLECTION OF LIQUID INDUSTRIAL WASTE
BY: *William C. Carr*
INDUSTRIAL WASTE ENGINEER, OFFICE OF COUNTY ENGINEER



INDEX MAP
SCALE 1" = 500'
PC 1152

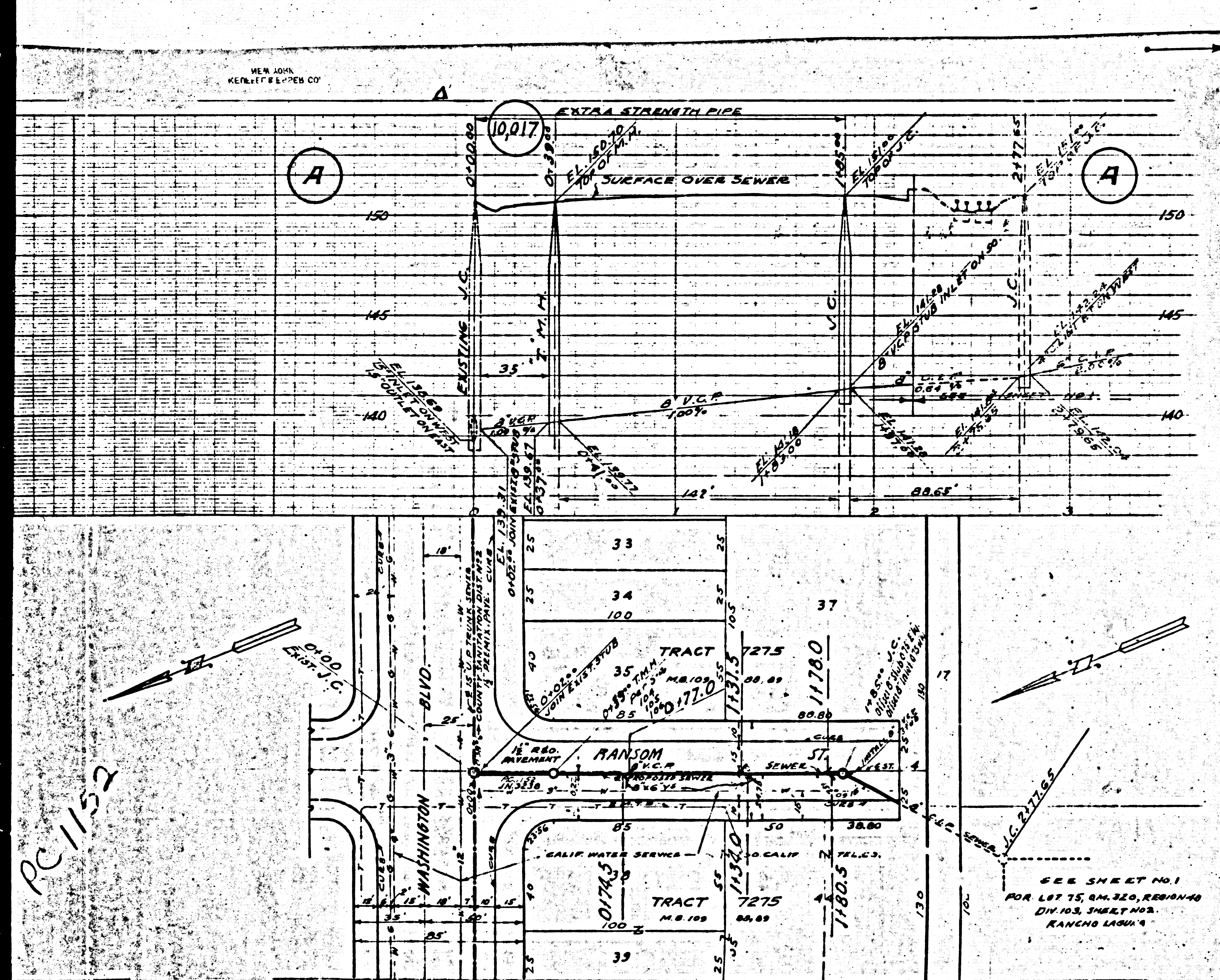
PC
1152

TRIM LINE



PC
1152

SEE SHEET NO. 1
FOR LOT 75, RM. 320, RANCHO
DIV. 103, SHEET NO. 1
RANCHO LABOUE



B.M. ELEV. 132.15 CURB AT N.W. COR. WASHINGTON BLVD. & ELDRIDGE AVE.		10,016	2
(1) USE STANDARD MANHOLE FRAME & COVER S-a-117 (2) USE STANDARD STRENGTH PIPE, EXCEPT AS NOTED. (3) USE CEMENT MORTAR FOR ALL VITRIFIED CLAY PIPE JOINTS (4) ALL STRUCTURES SHALL BE BRICK SEWER STRUCTURES S-a-104 (5) RESURFACE ALL TRENCH, WITHIN PAVED AREA, TO MEET COUNTY ROAD DEPARTMENT REQUIREMENTS.		PROFILE, ALIGNMENT & GRADE OF SANITARY SEWER TO BE CONSTRUCTED IN RANSOM STREET BETWEEN WASHINGTON BLVD. & 215' SO.	
NOTE: No Representation Of The County Engineer Will Survey Or Layout Any Portion Of The Work. The Owner Or His Authorized Representative Should Furnish The County Engineer With Grade Sheets & Set Properly Marked Stakes For The Work. No Revisions Shall Be Made In These Plans Without Approval Of The County Engineer. Provide Stakes On The Property Lines, Or Property Lines Produced, At Right Angles To The Sewer Line At The Center Line Of Each Manhole.		PRIVATE CONTRACT NO. 1152 M.S. 36 SHEET 2 OF 2 SHEETS SCALES: HOR. 1"=40' VERT. 1"=4' DEC. 1949	

NOTE:
 Grades To Which This Improvement Is To Be Constructed, Are Shown On This Plan
 & Profile.
 Elevations Are In Feet Above U.S.S. Datum Or Mean Sea Level.
 This Drawing & The Data Hereon, Are Hereby Made A Part Of The Specifications.
 Work Shall Be Constructed According To Specifications as Amended In The Office Of
 The County Engineer & Shall Be Executed Only In The Presence Of The County Engineer.
 Before Construction Is Started, The Contractor Must Obtain A Permit To Excavate
 In County Streets From The L.A. County Road Dept., 1111 So. Main Street & Make
 A Deposit With The County Engineer, 438 Los Angeles County Engineering Bldg.,
 Sufficient To Cover The Cost Of Construction, Inspection & Record Plans.
 Approval Of This Plan By The County Of Los Angeles Does Not Constitute A Representation
 Of The Accuracy Of The Location Of, Or The Existence Or Non-Existence Of Any
 Underground Utility, Pipe, Or Structure, Within The Limits Of This Project.

COUNTY OF LOS ANGELES, CALIFORNIA.

APPROVED *Alfred Gregory*
 CHIEF DEPUTY COUNTY ENGINEER

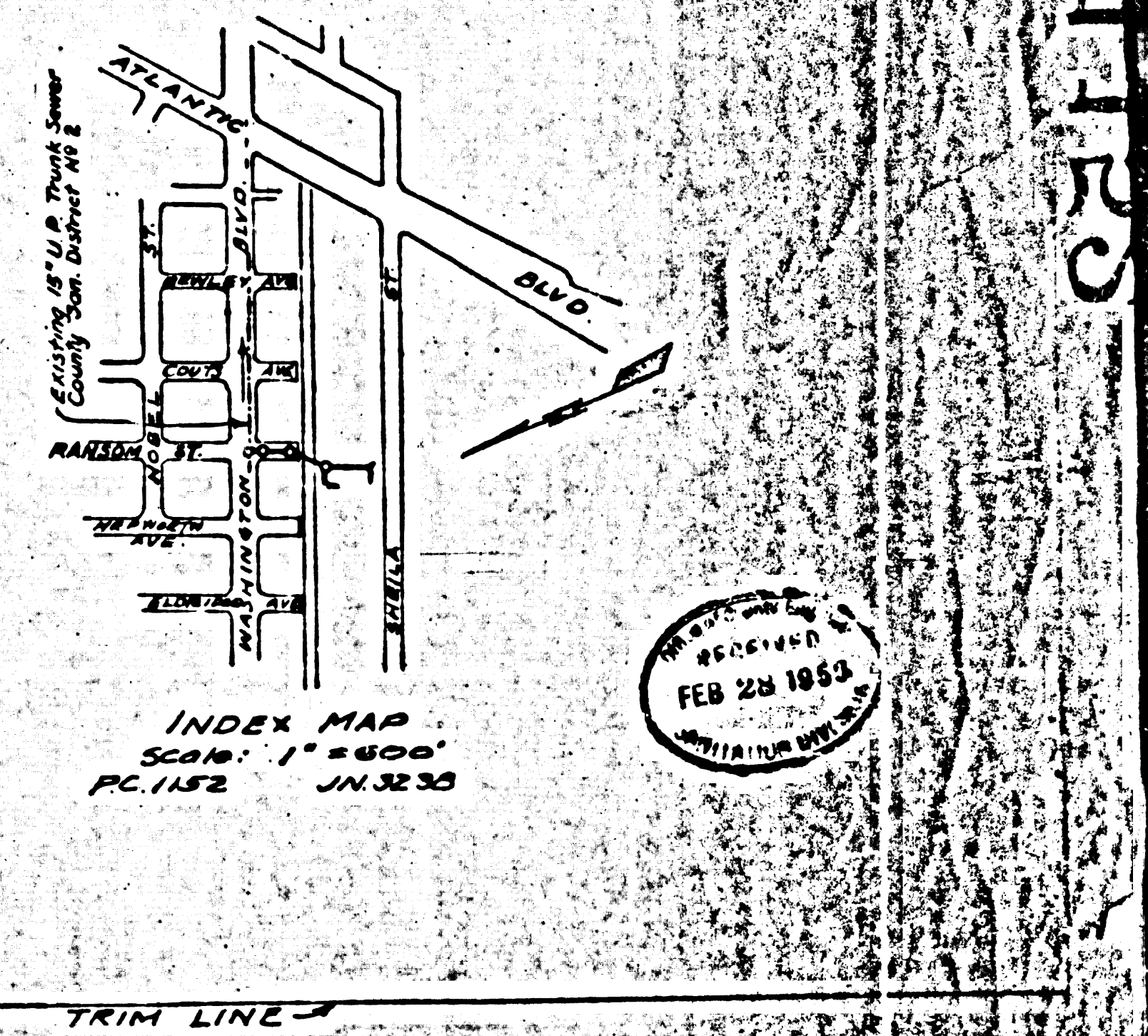
APPROVED *Bill Law*
 COUNTY ENGINEER, SANITATION DIST. NO. 2

15 017 am 11/10/50
 COUNTY ENGINEER, SANITATION DIST. NO. 2

PREPARED IN THE OFFICES OF
 BARNETT, HOPEN & SMITH
 APPROVED BY *Harold A. Barnett*
 P.E. 1216
 JOB NO. 5754

APPROVED FOR THE COLLECTION OF LIQUID INDUSTRIAL WASTE,
 BY *Arthur Pickett* 1/11/50
 INDUSTRIAL WASTE ENGINEER, OFFICE OF COUNTY ENGINEER

dec 61-3-28-50 - McKinn



PC 1152

DC 1123