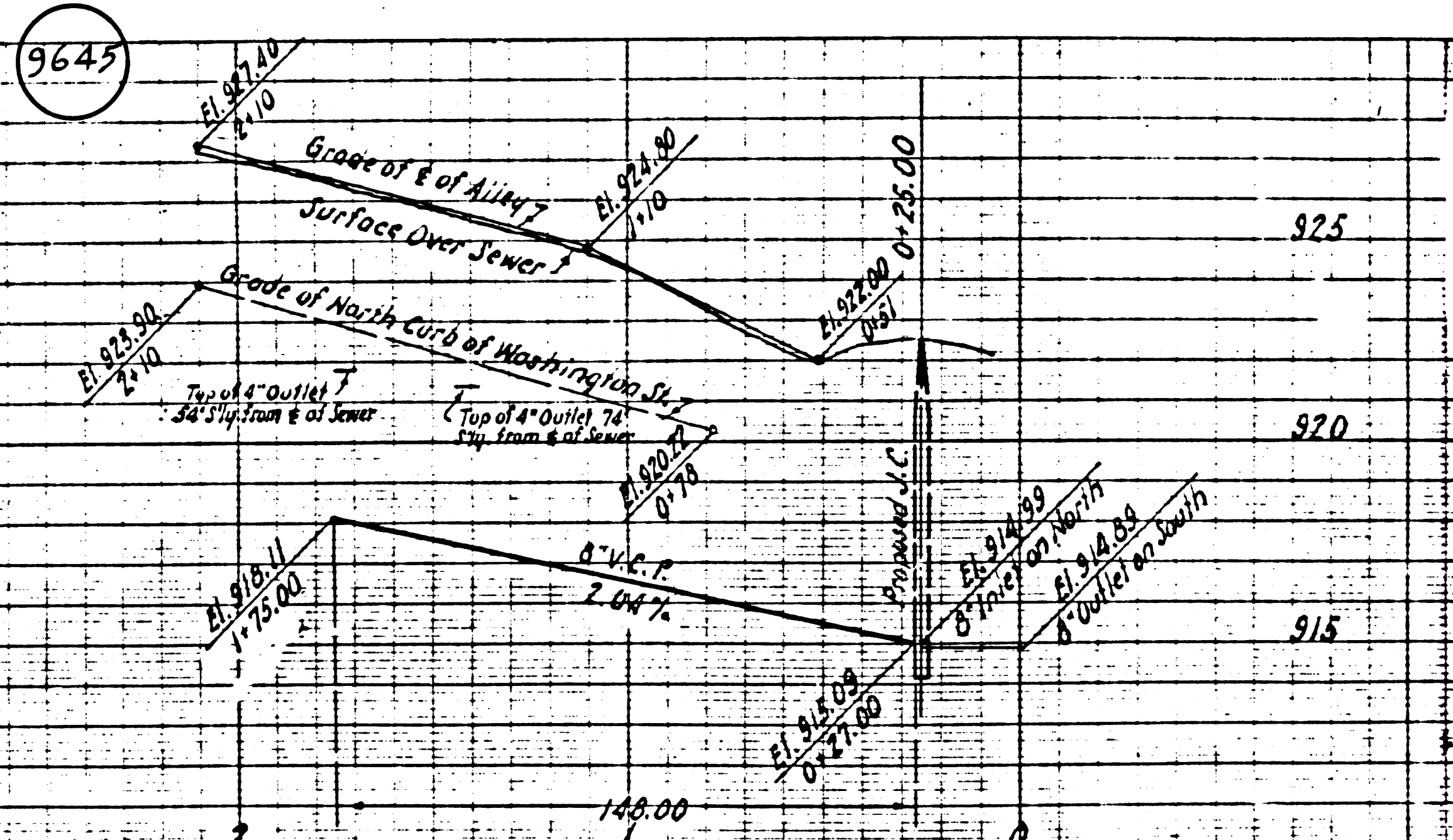
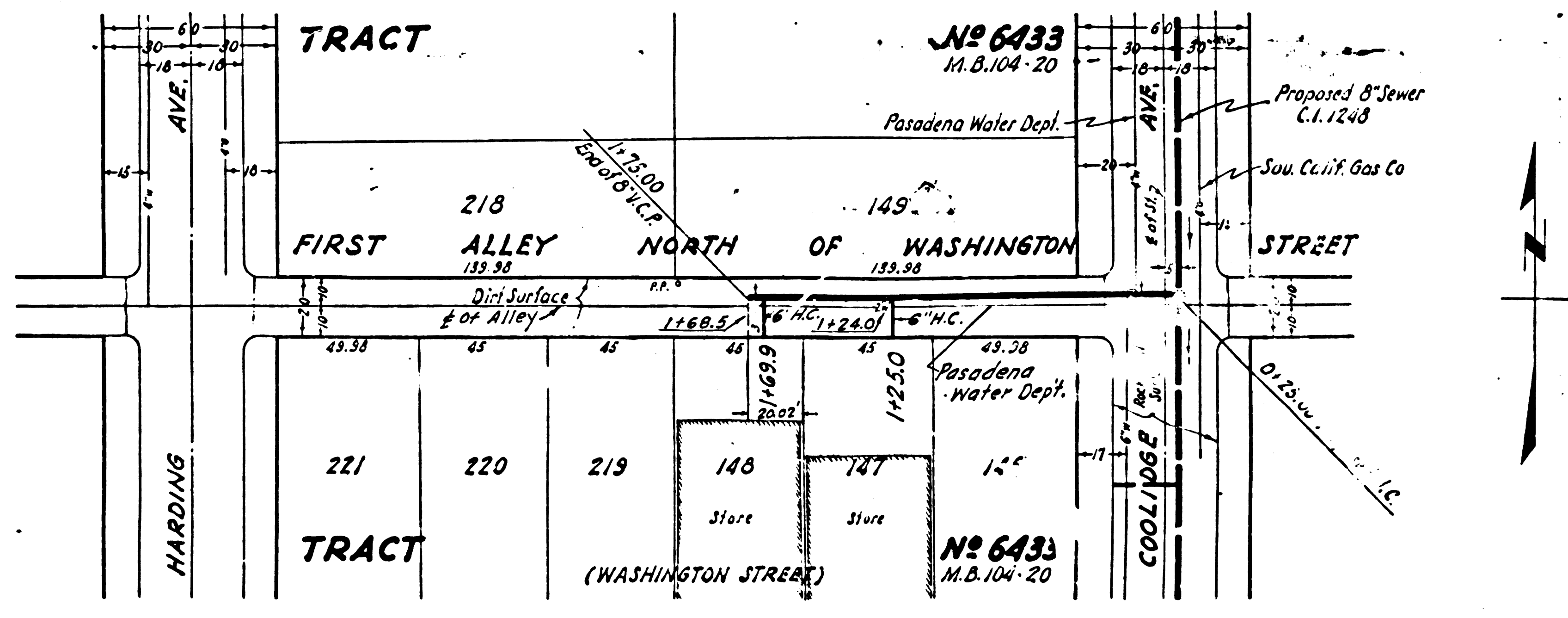


Trim Line

SCALE: HORIZONTAL 1" = 40' VERTICAL 1" = 4'



8211 J.A. TRACT 218 8211 J.A. TRACT 218



Trim Line

P.S. 1446 : 9-12, 230

SCALE: HORIZONTAL 1" = 40' VERTICAL 1" = 4'

Trim Line

SCALE: HORIZONTAL 1" = 40' VERTICAL 1" = 4'

USE STANDARD STRENGTH PIPE
 USE CEMENT MORTAR FOR ALL VITRIFIED CLAY PIPE JOINTS
 ENCASE FOUR FEET OF SEWER AT POINTS OF INTERFERENCE WITH POLES AS PER S-3-6
 CONSTRUCT HOUSE CONNECTIONS WITH INVERT AT PROPERTY LINE 7 FEET BELOW GRADE OF E OF ALLEY
 RESURFACE ALL TRENCHES WITHIN PAVED AREA WITH PREMIX ROCK AND OIL 2" IN THICKNESS
 ALL STRUCTURES SHALL BE BRICK SEWER STRUCTURES AS PER PLAN NO. S-1-104

PROFILE ALIGNMENT AND GRADE OF
SANITARY SEWERS
 TO BE CONSTRUCTED IN
FIRST ALLEY NORTH OF WASHINGTON STREET
 BETWEEN COOLIDGE AVE. AND HARDING AVE.
 (ARCADIA)

PRIVATE CONTRACT NO. 1158
 W. S. 44
 ONE SHEET

SCALE: HORIZONTAL 1" = 40' VERTICAL 1" = 4'

SEPT. 1949

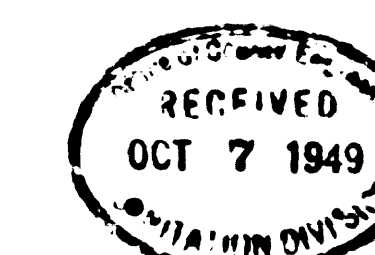
BY: *M. R. Foster*
 REG. C.E. NO. 702

FOR LEGEND
 SEE PLAN NO. S-3-64

NOTE
 GRADES TO WHICH THIS IMPROVEMENT IS TO BE CONSTRUCTED ARE SHOWN ON PLANS AND PROFILES.
 GRADE POINTS FOR TOP OF CURB, CENTER LINE OF STREET OR CENTER LINE OF ALLEY ARE SHOWN BY
 CIRCLES ON PROFILES. AT ALL POINTS BETWEEN DESIGNATED POINTS THE GRADE SHALL BE ESTABLISHED
 SO AS TO CONFORM TO A STRAIGHT LINE DRAWN BETWEEN SAID DESIGNATED POINTS.
 ELEVATIONS ARE IN FEET ABOVE U. S. G. S. DATUM OR MEAN SEA LEVEL.
 THIS DRAWING AND THE DATA HEREON ARE HEREBY MADE A PART OF THE SPECIFICATIONS.
 WORK SHALL BE CONSTRUCTED ACCORDING TO SPECIFICATIONS ON FILE IN THE OFFICE OF THE
 COUNTY ENGINEER AND SHALL BE PROSECUTED ONLY IN THE PRESENCE OF THE COUNTY ENGINEER.
 BEFORE WORK CAN BE STARTED, THE CONTRACTOR MUST OBTAIN A PERMIT TO EXCAVATE IN
 COUNTY STREETS FROM THE L. A. COUNTY ROAD DEPT., 1104 HALL OF RECORDS, AND MAKE A DEPOSIT
 WITH THE COUNTY ENGINEER, 700 UNION LEAGUE BUILDING, SUFFICIENT TO COVER THE COST OF
 CONSTRUCTION INSPECTION AND RECORD PLANS.
 IF WORK IS TO BE DONE IN A STATE HIGHWAY, A PERMIT MUST BE OBTAINED FROM THE STATE
 OF CALIFORNIA, DIVISION OF HIGHWAYS, 808 STATE BUILDING, AFTER MAKING THE DEPOSIT WITH THE
 COUNTY ENGINEER.

COUNTY OF LOS ANGELES, CALIFORNIA

APPROVED: *[Signature]*
 COUNTY ENGINEER



CHECKED BY: *H. L. Smalzer*
 OFFICE OF COUNTY ENGINEER, 700 UNION LEAGUE BLDG., LOS ANGELES, CALIF. 90012

Checked - W. L. - 1-19-50

Trim Line

8211 J.A. TRACT 218 8211 J.A. TRACT 218

20