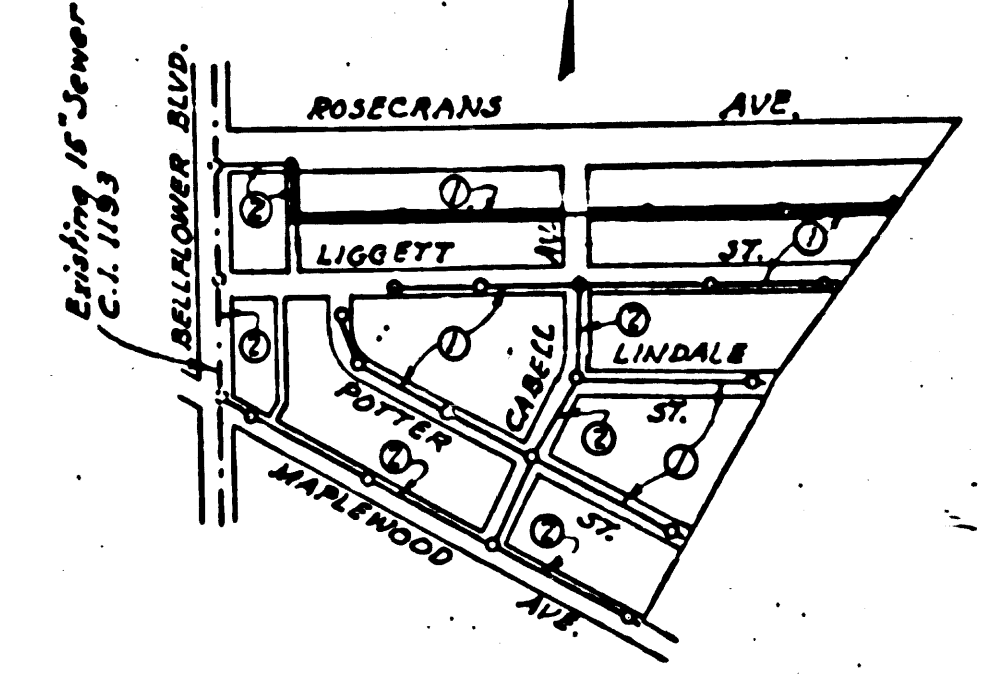
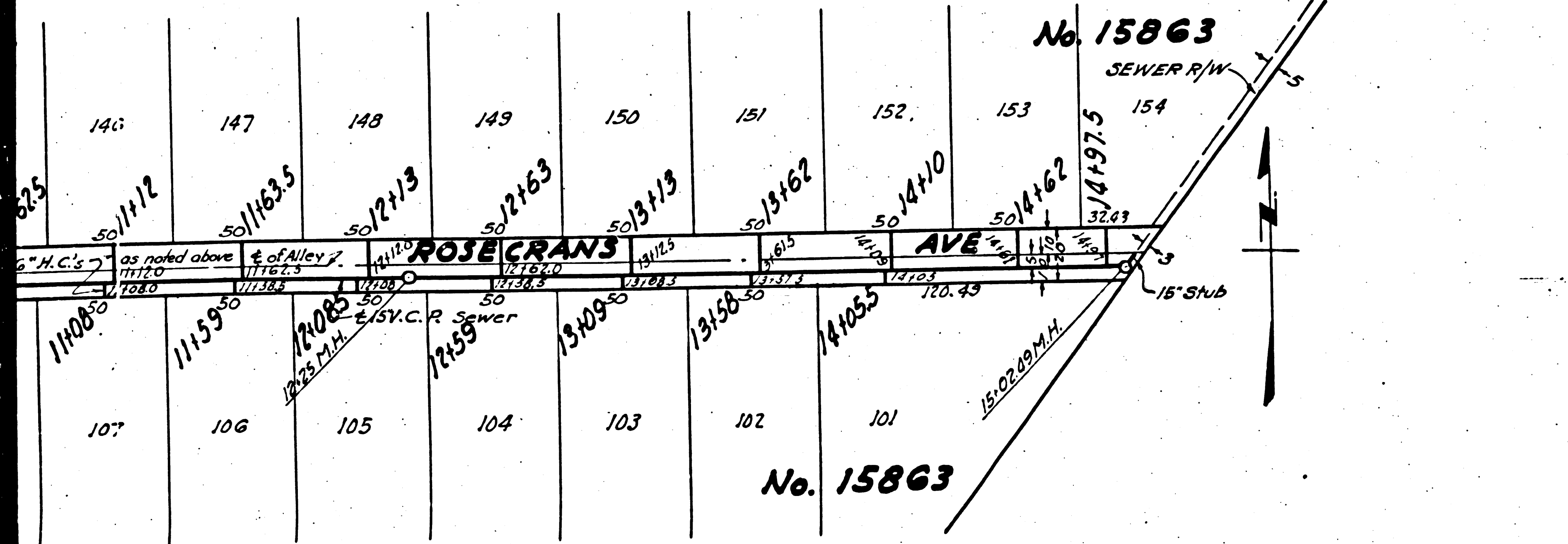


1. Use Standard Manhole Frames and Covers 18x17
2. Use Standard Strength Pipe, except as noted.
3. Use Cement Mortar for all Vitrified Clay Pipe Joints.
4. Resurface all Trench within paved areas to meet L.A. County Road Dept. requirements.
5. Encase top half of sewer at points of interference with Poles, S. & U.
6. House Connections to be constructed with invert of Property Line 5 feet below curb grade, except as noted.
7. All structures shall be brick joint structures, 3-a-704.

NOTE:
 No representative of the County Engineer will survey or lay out any portion of the work. The owner or his authorized representative shall furnish the County Engineer with Grade Sheets and Stationing for all House Connections and V. Poles and shall provide stakes for them at their proper locations with staking plainly marked. Any change of location shall be requested in writing by the owner or his representative. No revisions shall be made in these Plans without approval of the County Engineer.

PROFILE ALIGNMENT AND GRADE OF
SANITARY SEWERS
 TO BE CONSTRUCTED IN
FIRST ALLEY SOUTH OF ROSECRANS AVE.
 BETWEEN EASTERLY LINE OF TR. No. 15863 & 7th ALLEY WEST OF CABELL AVE.
LIGGETT STREET
 BETWEEN EASTERLY LINE OF TR. No. 15863 & POTTER ST.
LINDALE STREET
 BETWEEN EASTERLY LINE OF TR. No. 15863 & CABELL AVE.
POTTER STREET
 BETWEEN EASTERLY LINE OF TR. No. 15863 & LIGGETT ST.
PRIVATE CONTRACT No. 1162
W.S. 33
SHEET 1 OF 2 SHEETS
 Scale: Vert. 1"=4'
 Hor. 1"=40'
 Sept. 1949
PREPARED IN THE OFFICES OF
JONES & GILBERT



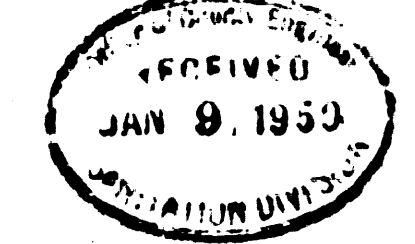
FOR LEGEND
 See Plan No. S-2-G4

NOTE:
 Grades to which this improvement is to be constructed are shown on Plans and Profiles. Grade points for top of curb, centerline of street, or centerline of alley are shown by circles on Profiles. At all points between designated points the grade shall be established so as to conform to a straight line drawn between said designated points.
 Elevations are in feet above U.S.G.S. Datum or Mean Sea Level.
 This drawing and the data hereon are hereby made a part of the specifications. Work shall be constructed according to specifications on file in the office of the County Engineer and shall be protected only in the presence of the County Engineer. Before work can be started the contractor must obtain a permit to excavate in County Street from the L.A. County Road Dept., 211 So. Main St., and make a deposit with the County Engineer, 828 County Engineering Building sufficient to cover the cost of construction. Inspection and Acceptance Plans.
 Approval of this plan by the County of Los Angeles does not constitute a representation as to the accuracy of, or the existence or non-existence of, any underground utility, pipe, or structure within the limits of this project.

APPROVED *[Signature]*
 County Engineer

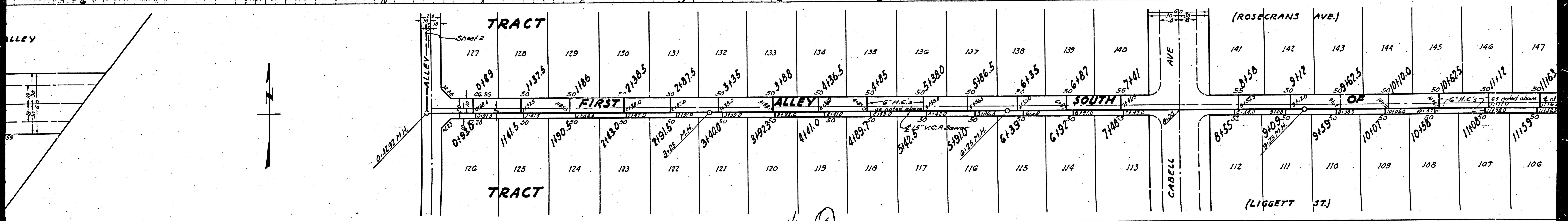
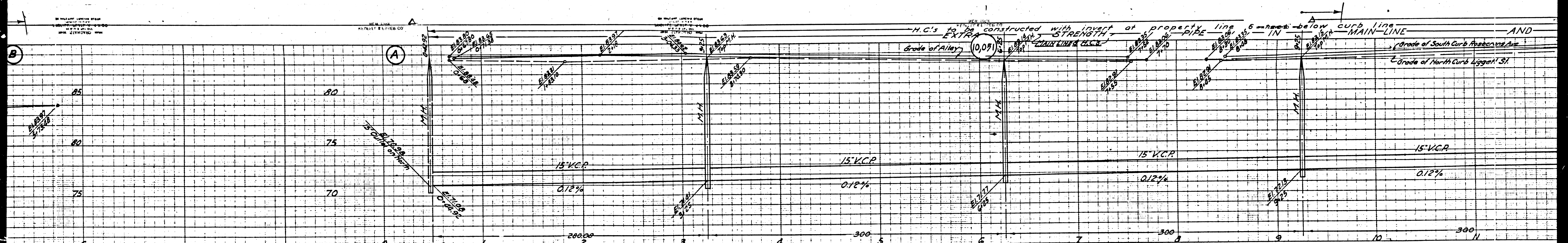
APPROVED *[Signature]*
 OFFICE ENGINEER
 For Chief Engineer of County
 Sanitation District No. 2

CHECKED *[Signature]* Nov. 23, 1949
 Office of County Engineer, Reg. C. L. No. 7103

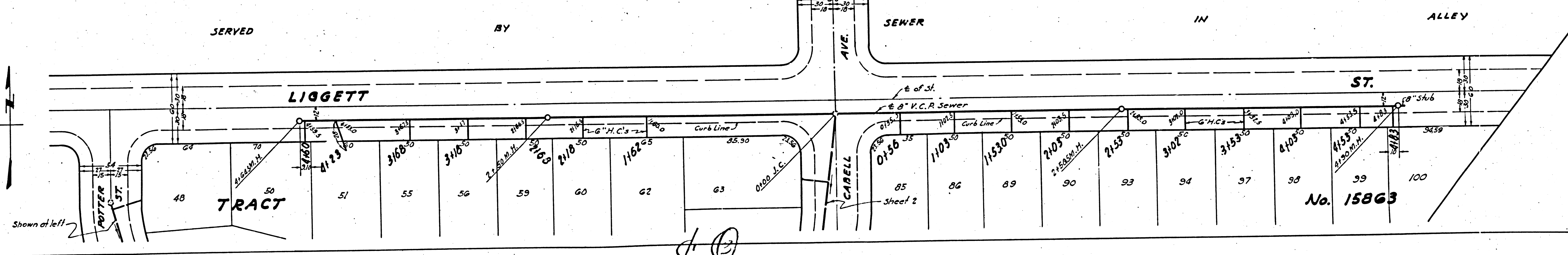
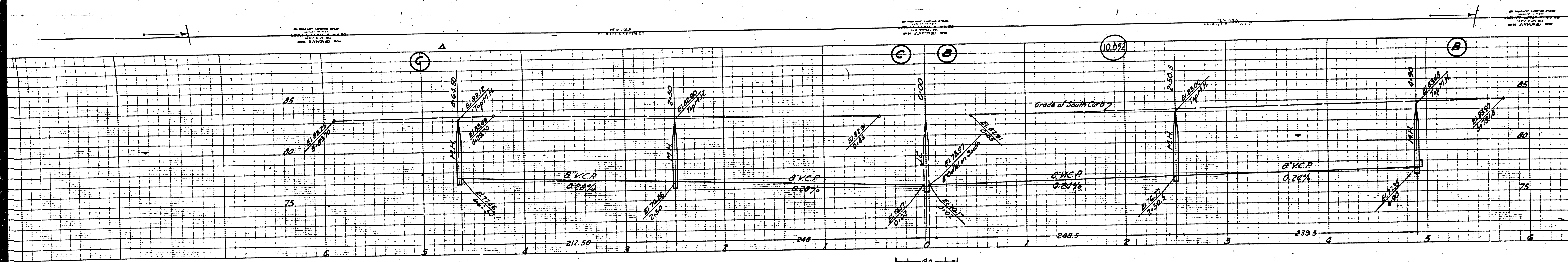


checked by Jones & Gilbert 3-28-53

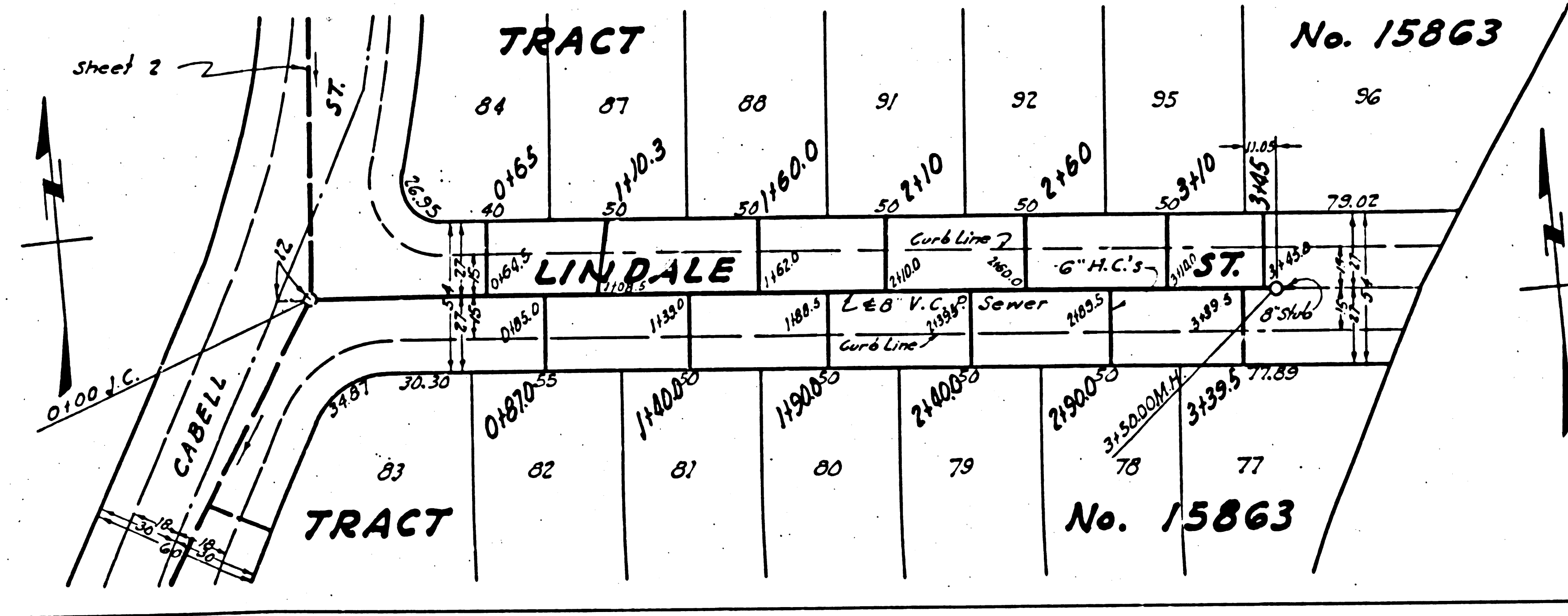
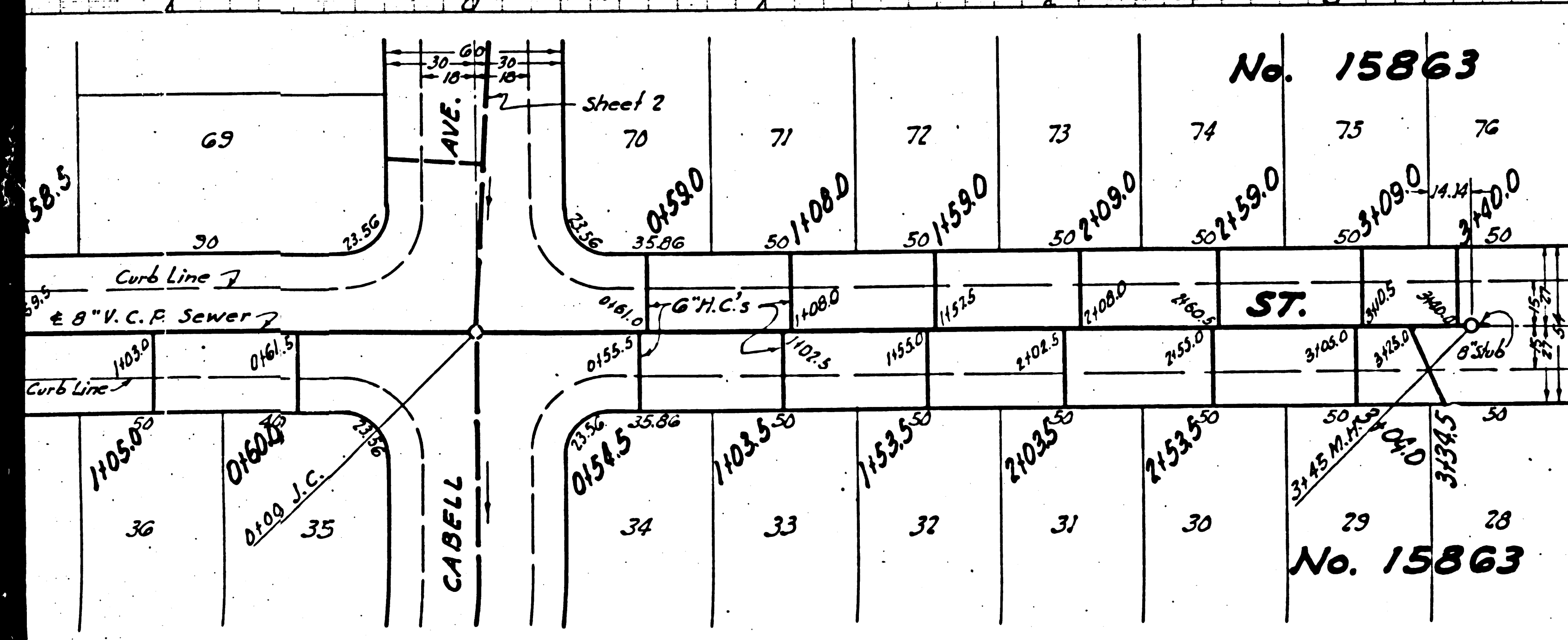
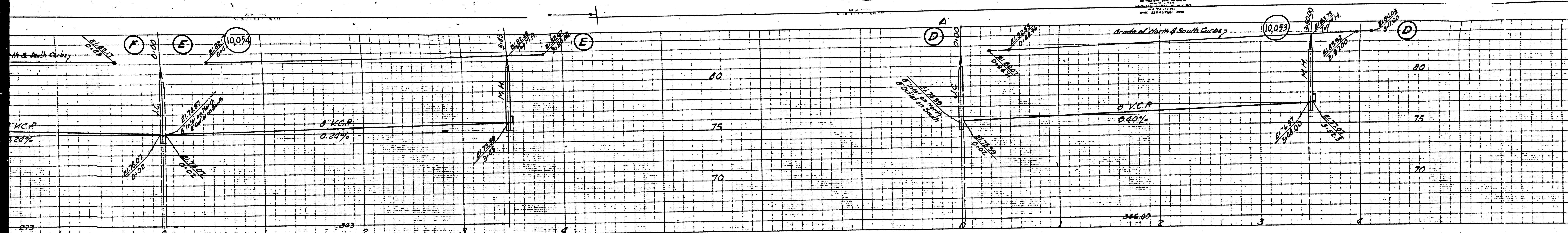
Trim Line



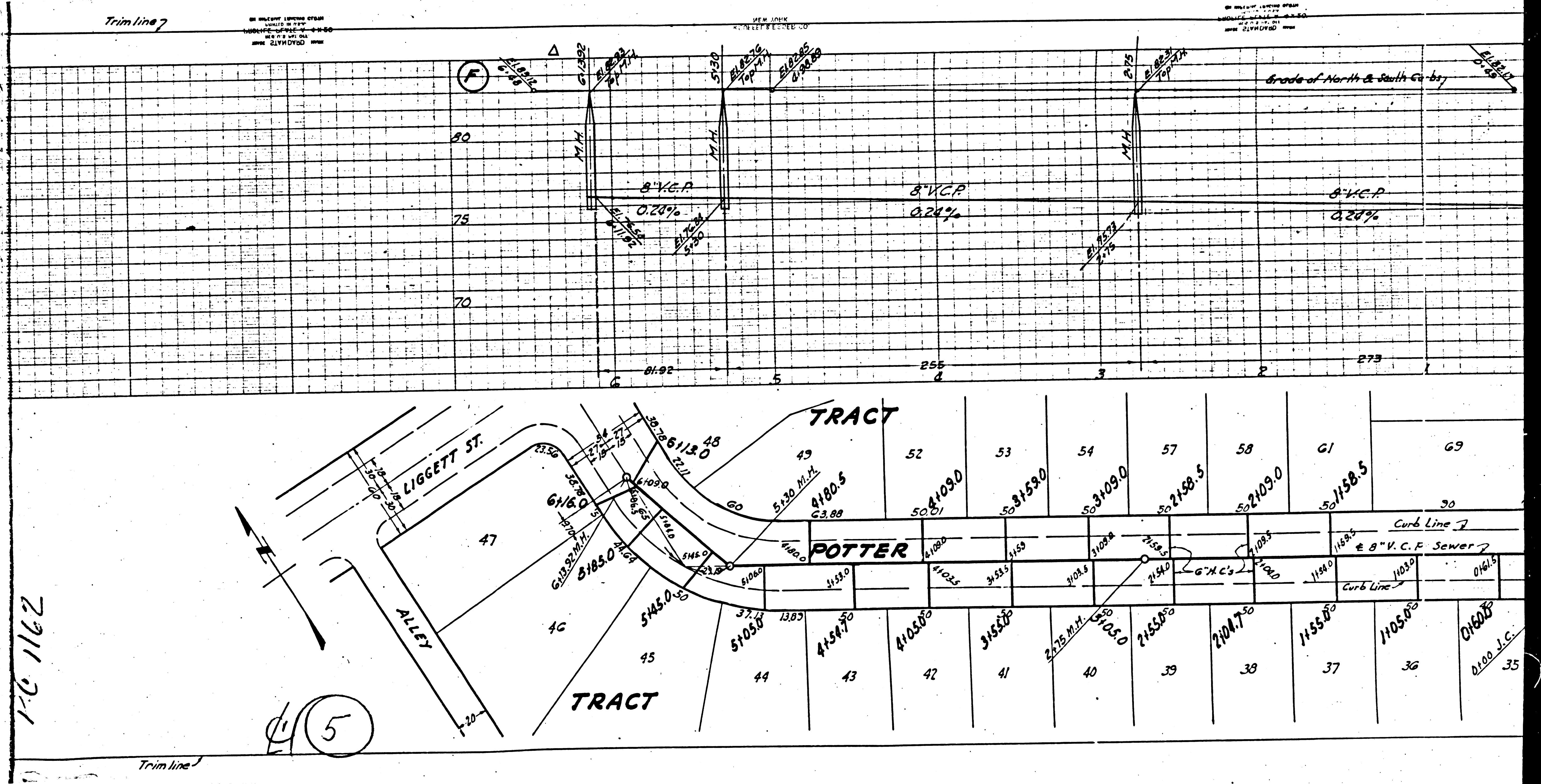
①

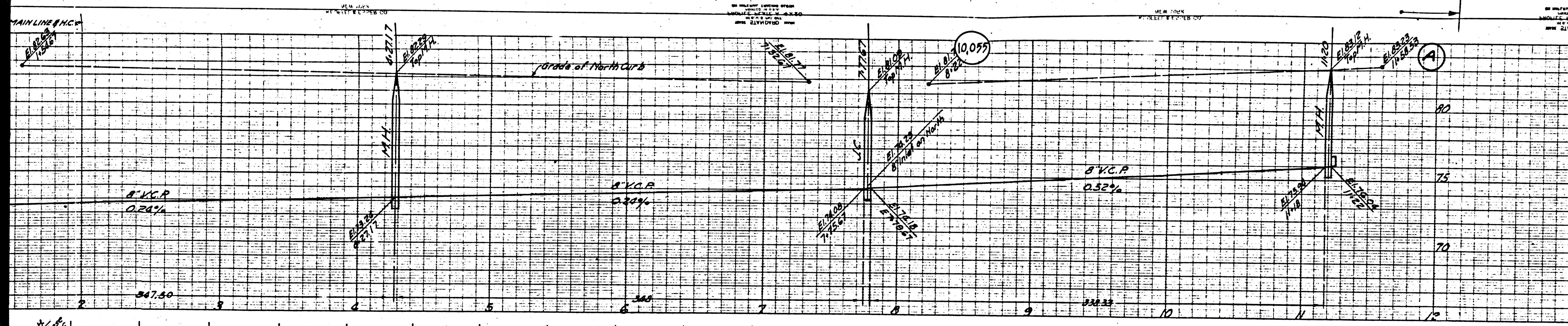


③

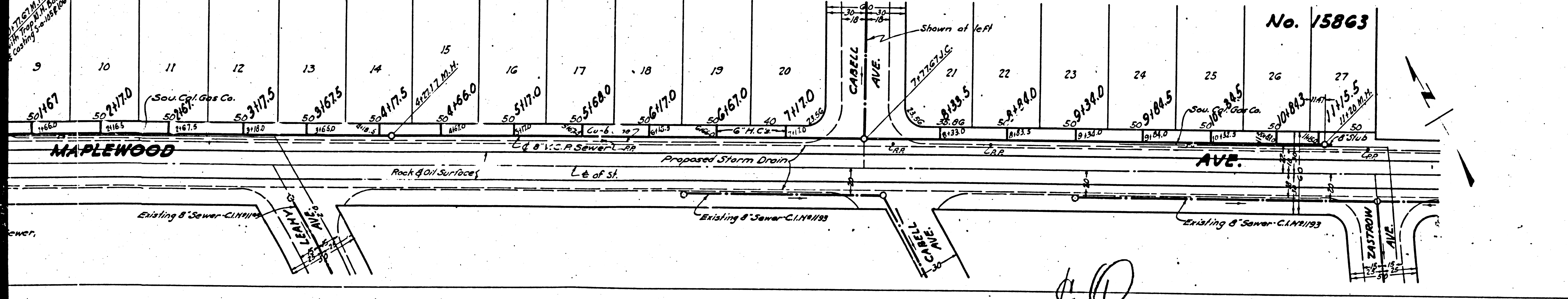


④



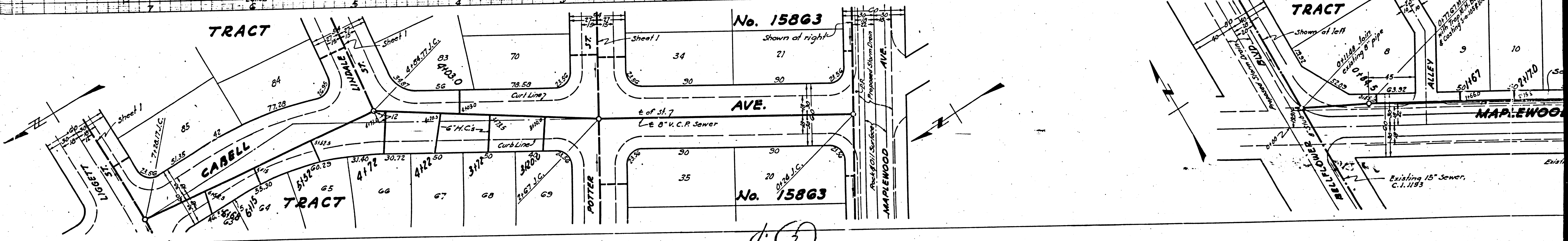
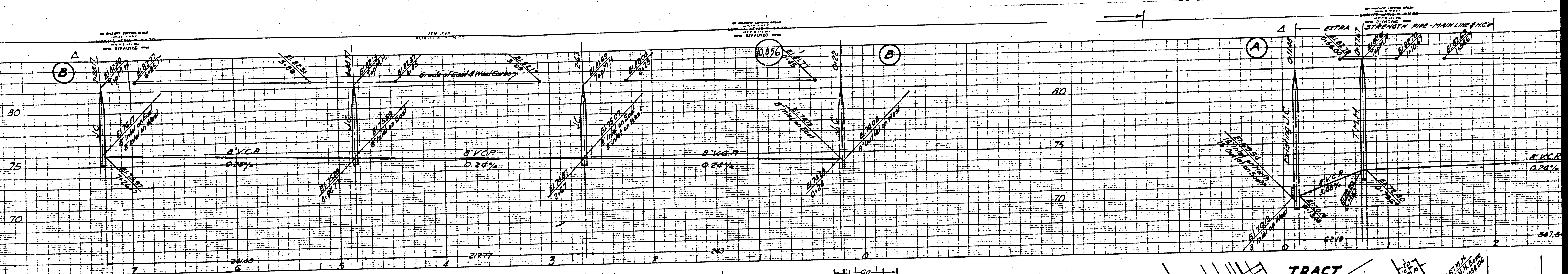


PROFILE ALIGNMENT AND GRADE OF
SANITARY SEWERS
 TO BE CONSTRUCTED IN
MAPLEWOOD AVE.
 BETWEEN EASTROW AVE. & BELLEFLOWER BLVD.
CABELL AVE.
 BETWEEN MAPLEWOOD AVE. & LIGGETT ST.
BELLEFLOWER BLVD.
 BETWEEN MAPLEWOOD AVE. & ROSECRANS AVE.
 ROSECRANS AVE.
 BETWEEN BELLEFLOWER BLVD. & FIRST ALLEY EAST OF BELLEFLOWER BLVD.
 FIRST ALLEY EAST OF BELLEFLOWER BLVD.
 BETWEEN ROSECRANS AVE. & FIRST ALLEY SOUTH OF ROSECRANS AVE.
 PRIVATE CONTRACT No. 1188
 W.S.33
SHEET 2 OF 2 SHEETS
 Scale: Vert. 1" = 4'
 Horiz. 1" = 40'
 PREPARED IN THE OFFICES OF
JONES & GILBERT

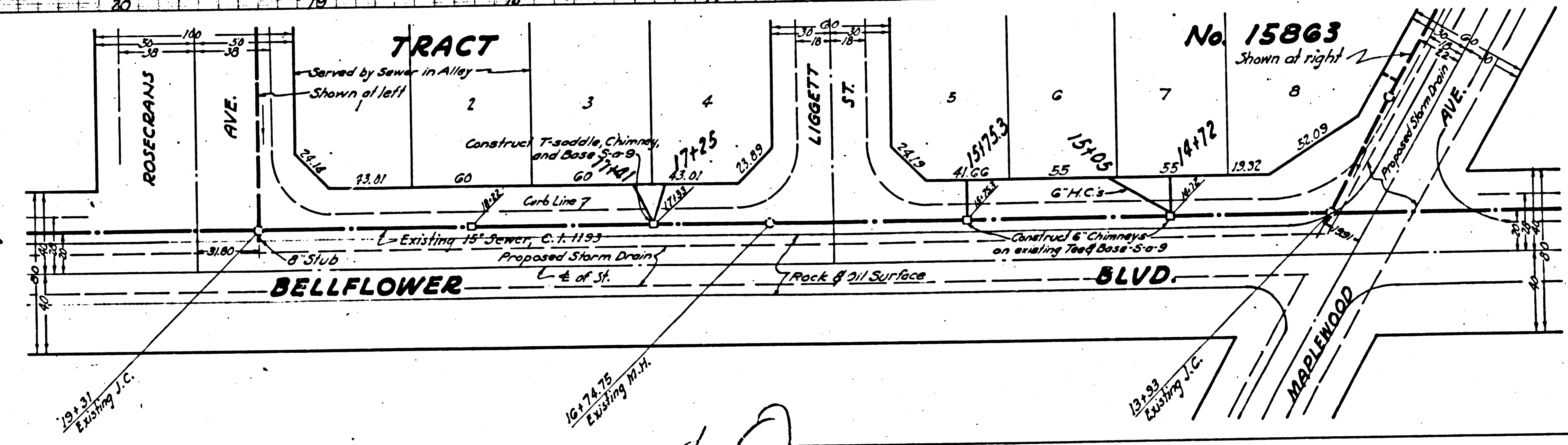
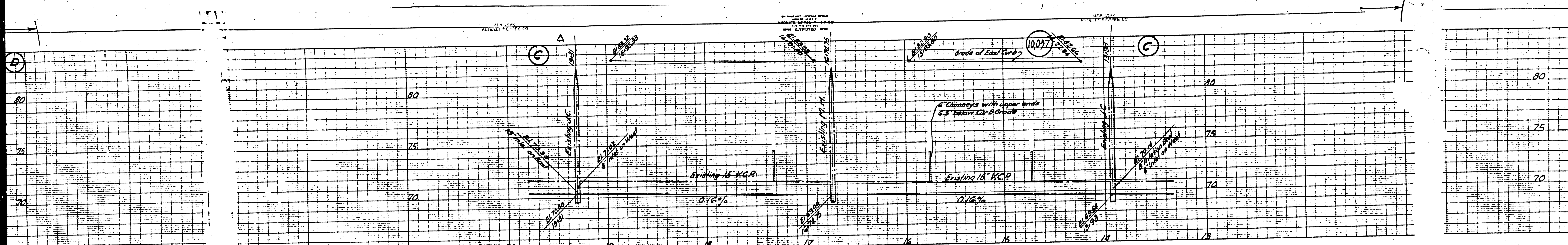


No. 15863
 BY *Paul H. Haddell*
 Reg. No. 2311
 FOR LEGEND
 See Plan No. S-2-64
 JAN 9 1953
FOR CONSTRUCTION NOTES SEE SHEET 1
 COUNTY OF LOS ANGELES, CALIFORNIA
 APPROVED *[Signature]*
 County Engineer
 APPROVED *[Signature]*
 For Chief Engineer of County
 Sanitation District No. 2
 CHECKED *[Signature]*
 Office of County Engineer, City of Los Angeles
 3-28-50

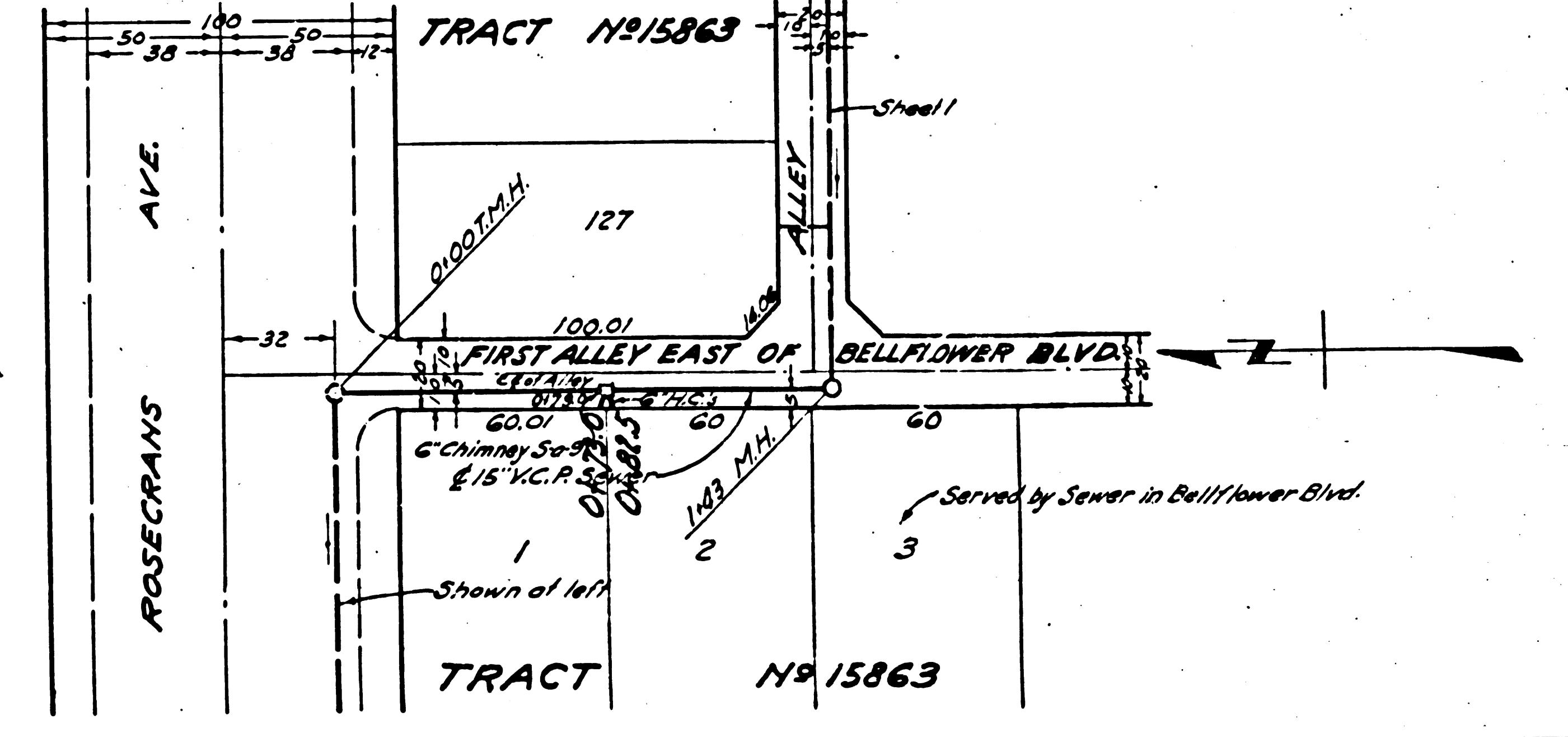
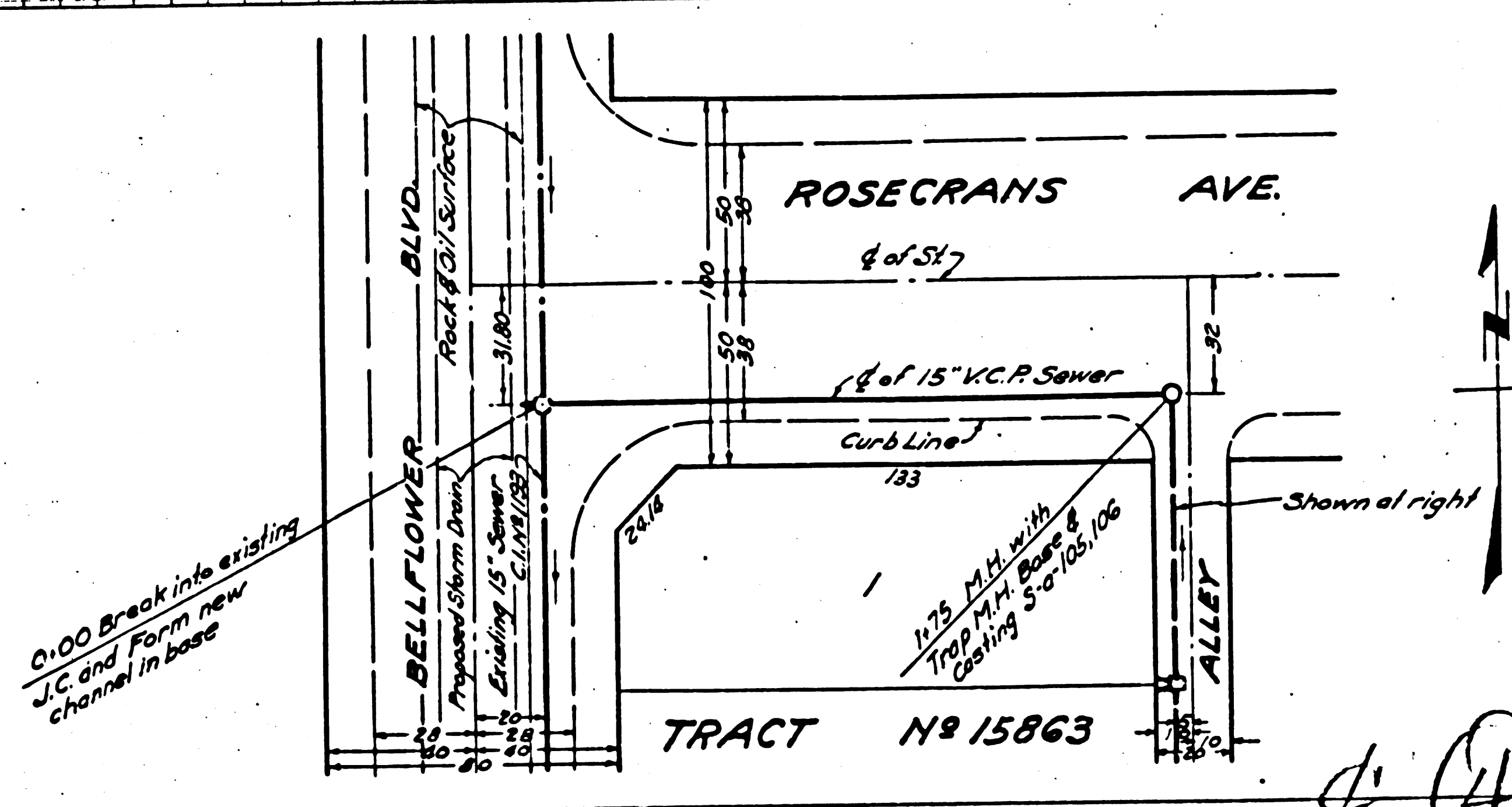
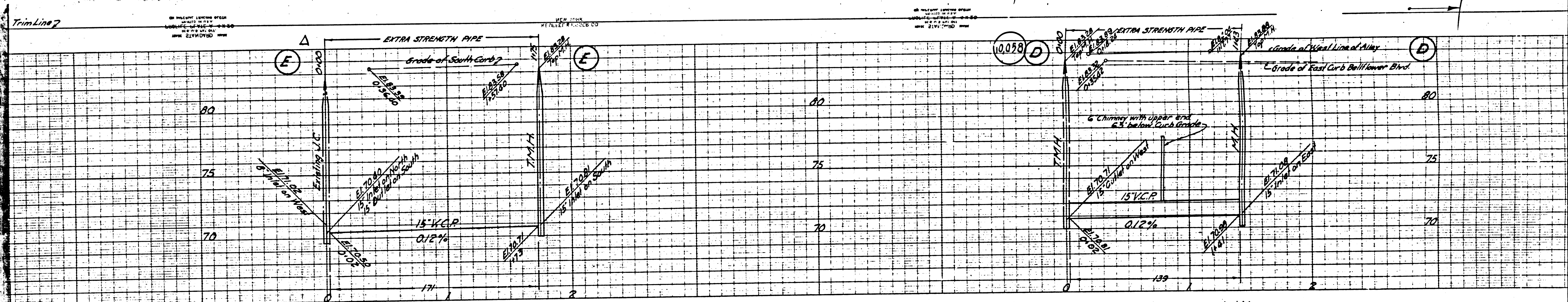
SOLD BY
 JONES & GILBERT



②



③



4