

10,902

- DOUBLE SCALE**
- (1) MANHOLE FRAME & COVER SHALL BE "A" LOS ANGELES STANDARD NON ROCKING MANHOLE COVER OF LOS ANGELES DESIGN B-8855 (ALHAMBRA PLATE NO. A-1450) STANDARD SPECIFICATIONS - SPECIFIED - 1914 - KENNEDY - AS - MODIFIED.
 - (2) ALL PIPE SHALL BE 12" OR 18" LOS ANGELES COUNTY STANDARD IN 3" - 8" 104" MODIFIED AS SPECIFIED IN DRAWING A-12-10, FOR LEVER BROTHERS COMPANY.
 - (3) ALL MANHOLES AT LOS ANGELES PLANT PROPERTY SHALL BE CONSTRUCTED AS SHOWN ON DRAWING NO. 104-104-10, FOR LEVER BROTHERS COMPANY.
 - (4) SYPHON STRUCTURE SHALL BE CONSTRUCTED AS SHOWN ON DRAWING NO. 104-104-10, FOR LEVER BROTHERS COMPANY.
 - (5) TOP OF ALL MANHOLES SHALL BE SIX INCHES ABOVE SURROUNDING GROUND EXCEPT WHERE THE SPECIFICATIONS REQUIRE OTHERWISE.
 - (6) ALL CONSTRUCTION SHALL BE ACCORDING TO THE SPECIFICATIONS OF THE COUNTY ENGINEER.
 - (7) LOS ANGELES PLANT PROPERTY SHALL BE CONSTRUCTED AS SHOWN ON DRAWING NO. 104-104-10, FOR LEVER BROTHERS COMPANY.
 - (8) EASEMENT FOUR FEET ON COUNTY DRAWING.
 - (9) PROVIDE EASEMENT TO THE SEWER.

NOTE: REPRESENTATIVE OF THE OWNER SHALL FURNISH THE COUNTY ENGINEER WITH A COPY OF THE PLANS AND SPECIFICATIONS AND A PERMIT TO EXCAVATE IN COUNTY STREETS FROM THE L.A. COUNTY ROAD DEPT. BEFORE WORK CAN BE STARTED. THE CONTRACTOR MUST OBTAIN A PERMIT TO EXCAVATE IN COUNTY STREETS FROM THE L.A. COUNTY ROAD DEPT. BEFORE WORK CAN BE STARTED. THE CONTRACTOR MUST OBTAIN A PERMIT TO EXCAVATE IN COUNTY STREETS FROM THE L.A. COUNTY ROAD DEPT. BEFORE WORK CAN BE STARTED.

COVER SHALL BE "A" LOS ANGELES STANDARD NON ROCKING MANHOLE COVER OF LOS ANGELES DESIGN B-8855 (ALHAMBRA PLATE NO. A-1450) STANDARD SPECIFICATIONS - SPECIFIED - 1914 - KENNEDY - AS - MODIFIED.

NOTE: REPRESENTATIVE OF THE OWNER SHALL FURNISH THE COUNTY ENGINEER WITH A COPY OF THE PLANS AND SPECIFICATIONS AND A PERMIT TO EXCAVATE IN COUNTY STREETS FROM THE L.A. COUNTY ROAD DEPT. BEFORE WORK CAN BE STARTED. THE CONTRACTOR MUST OBTAIN A PERMIT TO EXCAVATE IN COUNTY STREETS FROM THE L.A. COUNTY ROAD DEPT. BEFORE WORK CAN BE STARTED.

PROFILE ALIGNMENT AND GRADE OF SANITARY SEWERS TO BE CONSTRUCTED FROM A POINT TO A POINT

BANDINI BOULEVARD
JOB NO. 3258

PRIVATE CONTRACT NO. 1168
WS36

SHEET 1 OF 1 SHEET

PREPARED IN THE OFFICES OF
BECHTEL CORPORATION

BY: *Leslie Davis*
REG. C.E. NO. 5437

FOR LEGEND
SEE PLAN NO. 1-6-50

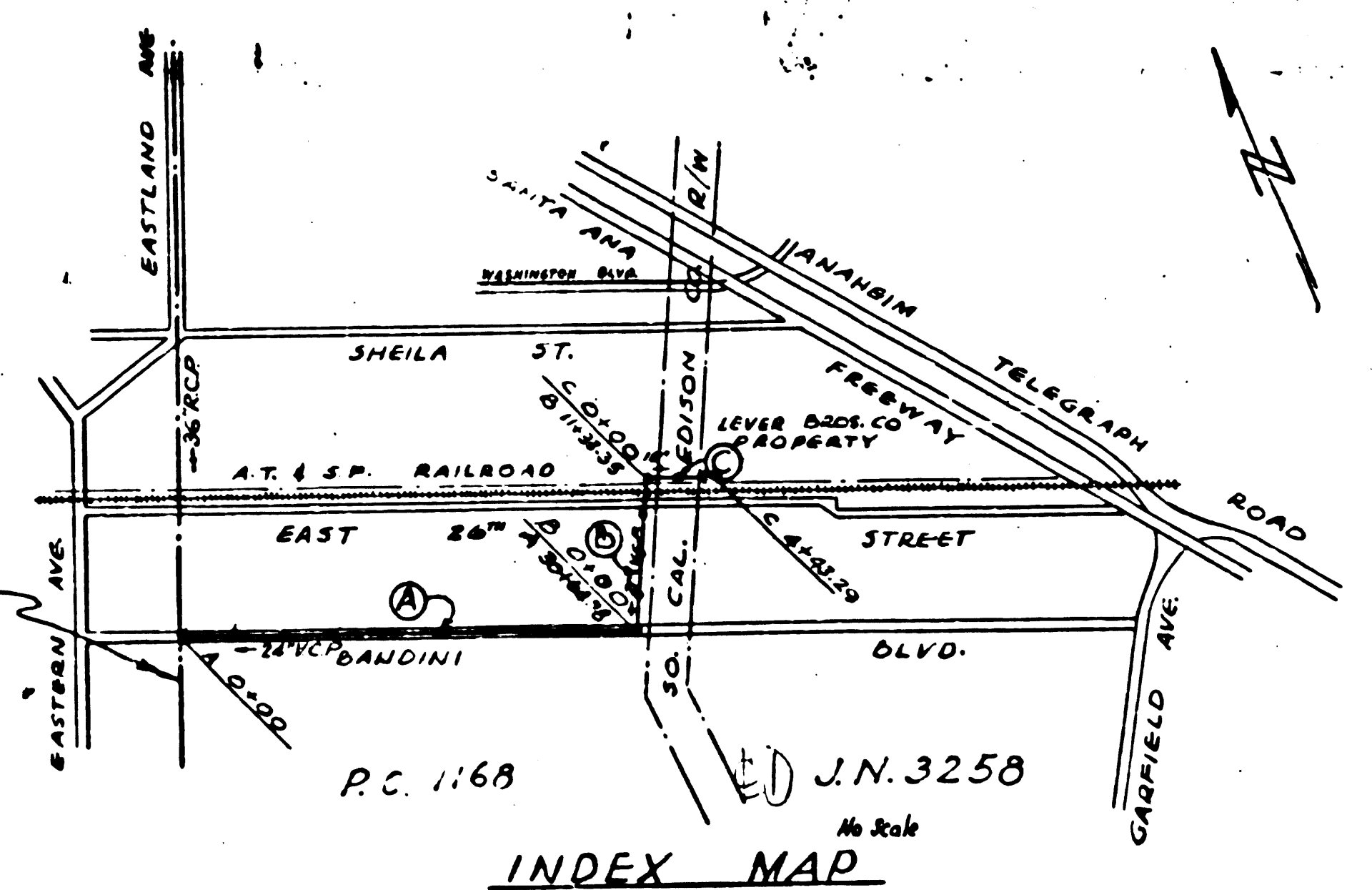
NOTE: GRADES TO WHICH THIS IMPROVEMENT IS TO BE CONSTRUCTED ARE SHOWN ON PLANS AND PROFILE. GRADE POINTS FOR TOP OF CURB, CENTER LINE OF STREET OR CENTER LINE OF ALLEY ARE SHOWN BY CIRCLES ON PROFILES. AT ALL POINTS BETWEEN DESIGNATED POINTS THE GRADE SHALL BE ESTABLISHED SO AS TO CONFORM TO A STRAIGHT LINE DRAWN BETWEEN SAID DESIGNATED POINTS. ELEVATIONS ARE IN FEET ABOVE U.S.S. DATUM OR MEAN SEA LEVEL. THIS DRAWING AND THE DATA HEREON ARE HEREBY MADE A PART OF THE SPECIFICATIONS. WORK SHALL BE CONSTRUCTED ACCORDING TO SPECIFICATIONS ON FILE IN THE OFFICE OF THE COUNTY ENGINEER AND SHALL BE PROSECUTED ONLY IN THE PRESENCE OF THE COUNTY ENGINEER. BEFORE WORK CAN BE STARTED, THE CONTRACTOR MUST OBTAIN A PERMIT TO EXCAVATE IN COUNTY STREETS FROM THE L.A. COUNTY ROAD DEPT. BEFORE WORK CAN BE STARTED. THE CONTRACTOR MUST OBTAIN A PERMIT TO EXCAVATE IN COUNTY STREETS FROM THE L.A. COUNTY ROAD DEPT. BEFORE WORK CAN BE STARTED. THE CONTRACTOR MUST OBTAIN A PERMIT TO EXCAVATE IN COUNTY STREETS FROM THE L.A. COUNTY ROAD DEPT. BEFORE WORK CAN BE STARTED.

APPROVED FOR THE COLLECTION OF LIQUID INDUSTRIAL WASTE CONNECTION PERMITS MUST BE OBTAINED FROM THE COUNTY ENGINEER.
John L. Patton DATE 1-6-50
ASST. INDUSTRIAL WASTE ENGINEER, OFFICE OF THE COUNTY ENGINEER

APPROVED COUNTY ENGINEER
James T. Keenan DATE 1-6-50
CHIEF ENGINEER OF COUNTY SANITATION DISTRICT NO. 2

CHECKED BY *James T. Keenan* 1/5/50
OFFICE OF COUNTY ENGINEER, REG. C.E. NO. 7103

Existing 39" R.C. L.A. Co. San Dist. No. 2 Trunk Sewer (4857)

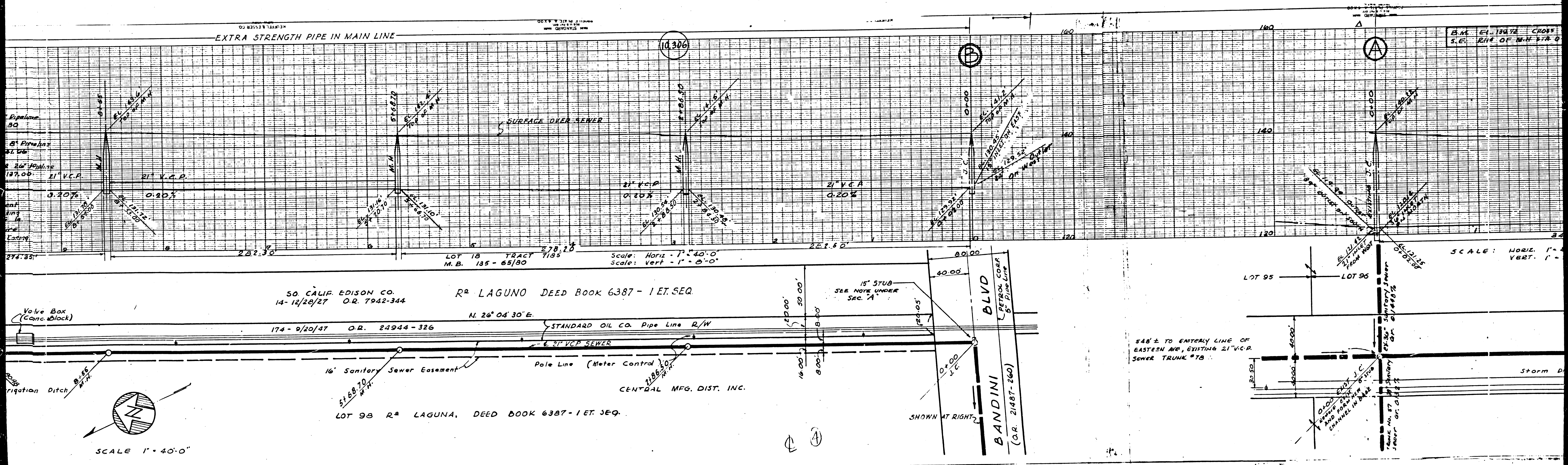


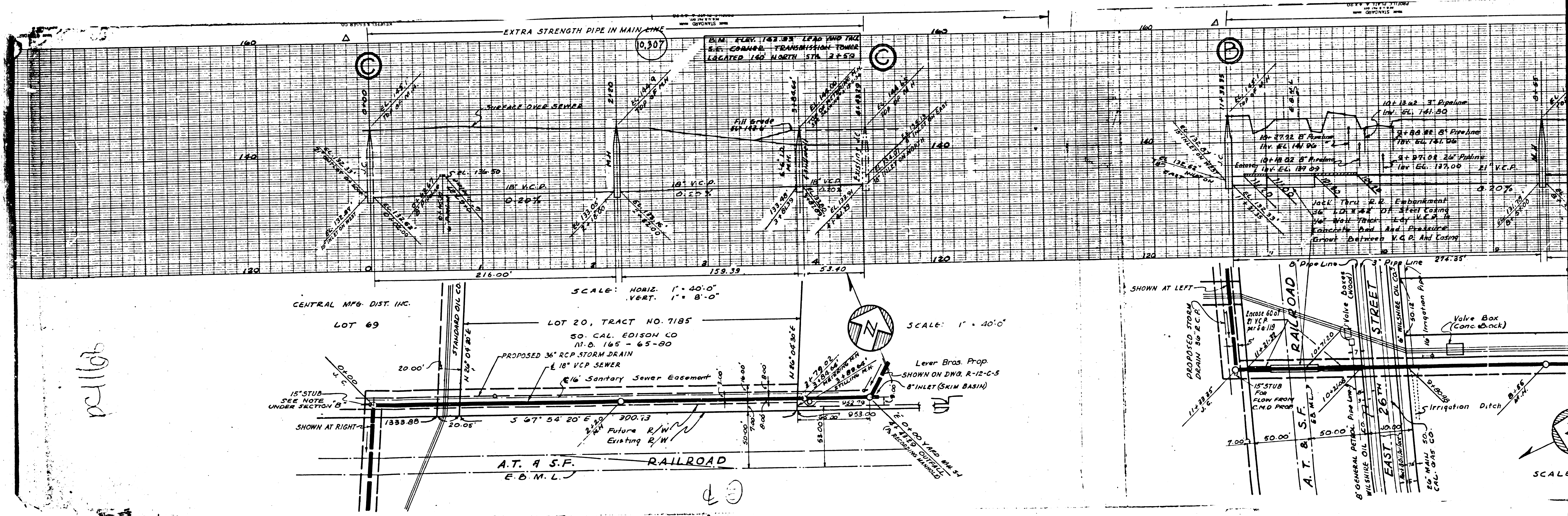
INDEX MAP

BECHTEL CORPORATION
SAN FRANCISCO, CALIFORNIA

LEVER BROTHERS COMPANY
LOS ANGELES, CALIFORNIA

SANITARY SEWER PLAN AND PROFILE





21167

CENTRAL MFG. DIST. INC.
LOT 69

SCALE: HORIZ. 1" = 40'-0"
VERT. 1" = 8'-0"

SCALE: 1" = 40'-0"

15'-STUB
SEE NOTE
UNDER SECTION B

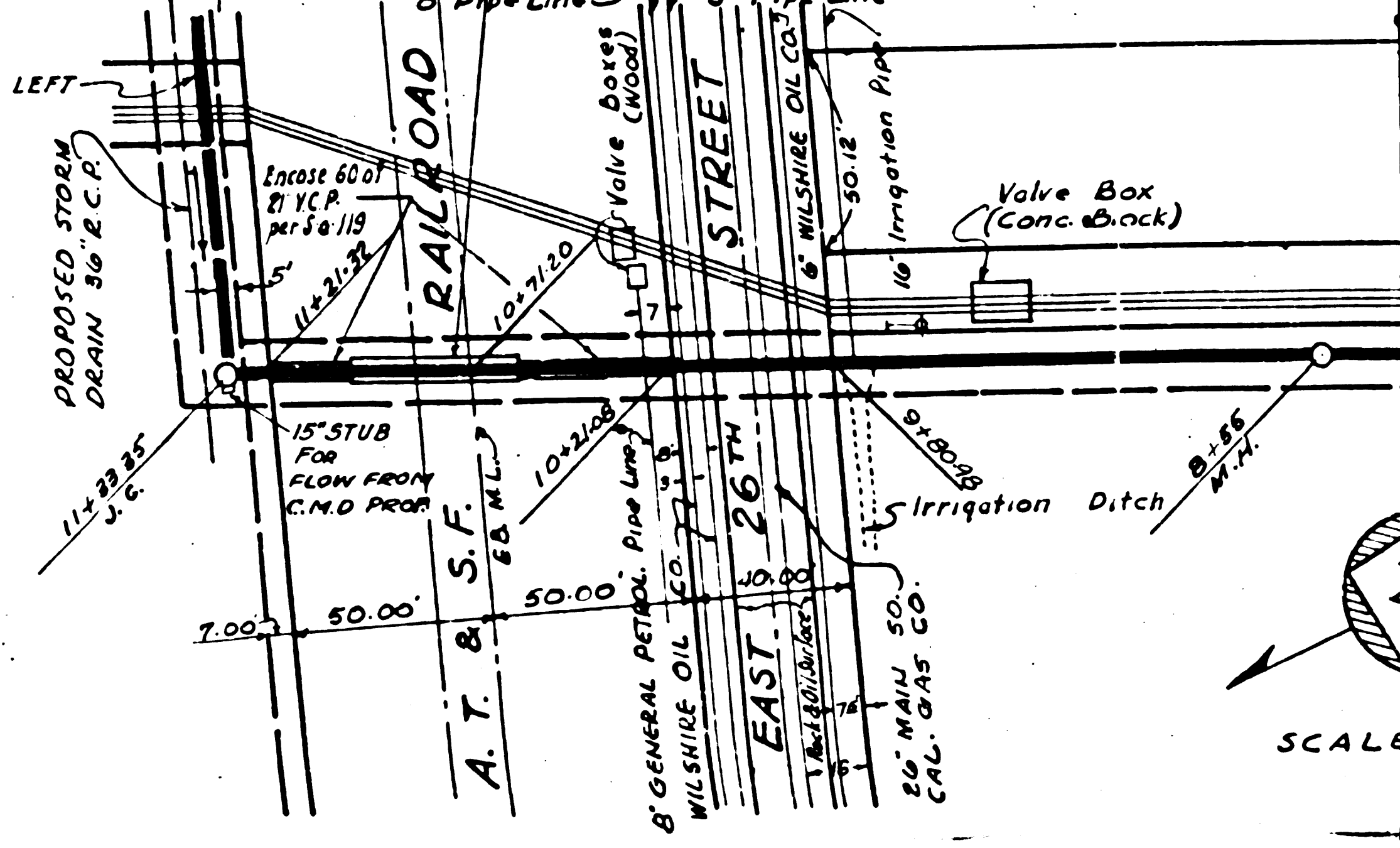
PROPOSED 36" RCP STORM DRAIN
18" VCP SEWER
16" Sanitary Sewer Easement

Lever Bras Prop.
SHOWN ON DWG. R-12-C-5
8" INLET (SKIM BASIN)

SHOWN AT RIGHT

A.T. & S.F. RAILROAD
E.B.M.L.

SHOWN AT LEFT



SCALE