

BM - SY 503 203 - Elev. 37.070
 SPIKE IN WALK 40' North & Carson St.
 and 50' West & Moneta Ave.

9945

USE STANDARD MANHOLE FRAMES AND COVERS S=117.
 USE STANDARD STRENGTH PIPE.
 USE CEMENT MORTAR FOR ALL VITRIFIED CLAY PIPE JOINTS.
 RESURFACE ALL TRENCH WITH IN PAVED AREA TO MEET LOS ANGELES
 COUNTY ROAD DEPT. REQUIREMENTS.
 CONSTRUCT HOUSE CONNECTIONS WITH INVERT AT PROPERTY LINE
 5 FEET BELOW CURB GRADE EXCEPT AS NOTED.
 ENCASE FOUR FEET OF SEWER AT POINTS OF INTERFERENCE WITH POLES 3-1-119
 ALL STRUCTURES SHALL BE BRICK SEWER STRUCTURES S=104.

PROVIDE STAKES ON THE PROPERTY LINES OR PROPERTY LINES
 PRODUCED AT RIGHT ANGLES TO THE SEWER LINE, AT THE
 CENTER LINE OF EACH MANHOLE.

Note:
 No representative of the County Engineer will survey or lay out any portion of the work.
 The owner or his authorized representative shall furnish the County Engineer with good
 street and sections of all House Connections and Y Branches and shall provide staked for
 them at their proper locations with staking plainly marked. Any change of location
 shall be requested in writing by the owner to the County Engineer.
 No revisions shall be made in these plans without approval of the County Engineer.

PROFILE ALIGNMENT AND GRADE OF
SANITARY SEWERS
 TO BE CONSTRUCTED IN
214th STREET
215th STREET
 BETWEEN WEST LINE OF TRACT NO 16180 AND FIGUEROA ST.
SANITARY SEWER RIGHT OF WAY
 IN TRACT NO 16180
PRIVATE CONTRACT NO. 1174
M.S. 28
 SHEET OF 8
ONE SHEET

PREPARED IN THE OFFICE OF
W.M. FAIR, JR.
 BY **Edmund J. ...**

FOR LEGEND
 SEE PLAN NO. 3-6-64

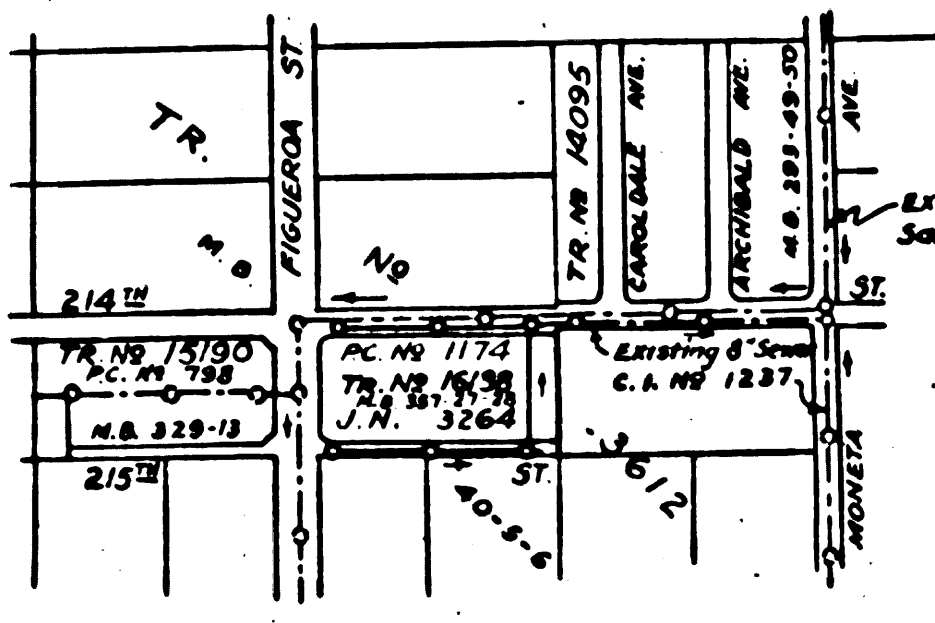
NOTE
 GRADES TO WHICH THIS IMPROVEMENT IS TO BE CONSTRUCTED ARE SHOWN ON PLANS AND PROFILE
 GRADE POINTS FOR TOP OF CURB, CENTER LINE OF STREET OR CENTER LINE OF ALLEY ARE SHOWN BY CIRCLES ON
 PROFILE AT ALL POINTS BETWEEN DESIGNATED POINTS TO BE ESTABLISHED 50 AS TO CURBS OR
 TO A STRAIGHT LINE DRAWN BETWEEN SAID DESIGNATED POINTS.
 ELEVATIONS ARE IN FEET ABOVE U.S.S. OR MEAN SEA LEVEL.
 THIS DRAWING AND THE DATA HEREON ARE HEREBY MADE A PART OF THE SPECIFICATIONS
 WORK SHALL BE CONSTRUCTED ACCORDING TO SPECIFICATIONS ON FILE IN THE OFFICE OF THE COUNTY
 ENGINEER AND SHALL BE PROSECUTED ONLY IN THE PRESENCE OF THE COUNTY ENGINEER
 BEFORE WORK CAN BE STARTED THE CONTRACTOR MUST OBTAIN A PERMIT TO EXCAVATE IN COUNTY
 STREETS FROM THE L.A. COUNTY ROAD DEPT. 215 MAIN ST. AND MAKE A DEPOSIT WITH THE COUNTY
 ENGINEER 250 LOS ANGELES COUNTY ENGINEERING BLDG. SUFFICIENT TO COVER THE COST OF COST SECTION
 AND RECORD PLANS.
 APPROVAL OF THIS PLAN BY THE COUNTY OF LOS ANGELES DOES NOT CONSTITUTE A REPRESENTATION
 AS TO THE ACCURACY OF THE LOCATION OR THE EXISTENCE OR NON-EXISTENCE OF ANY UNDERGROUND
 UTILITY, PIPE OR STRUCTURE WITHIN THE LIMITS OF THIS PROJECT.

COUNTY OF LOS ANGELES - CALIFORNIA
 APPROVED: **[Signature]**
 COUNTY ENGINEER
 APPROVED: **[Signature]**
 CHIEF ENGINEER OF COUNTY
 SANITATION DIST. NO. 8

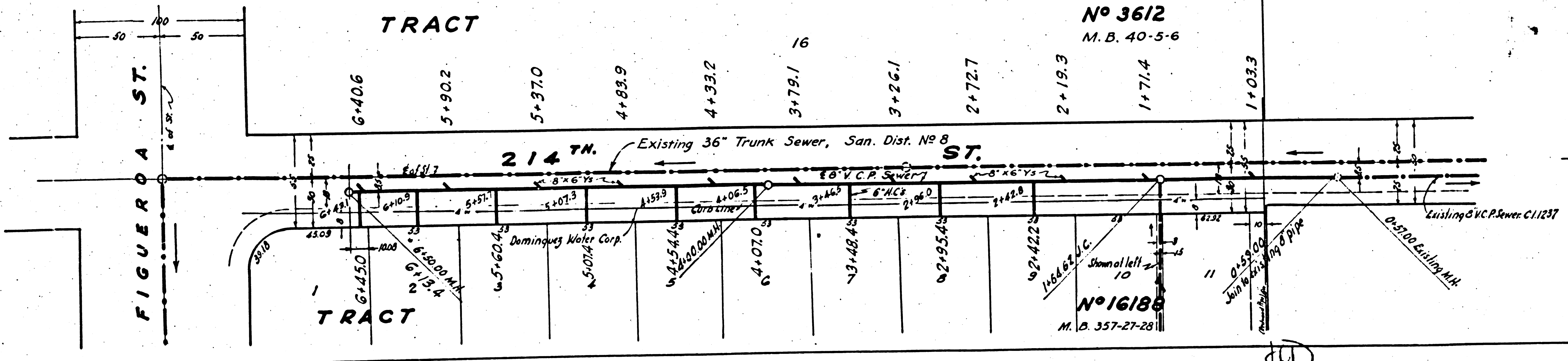
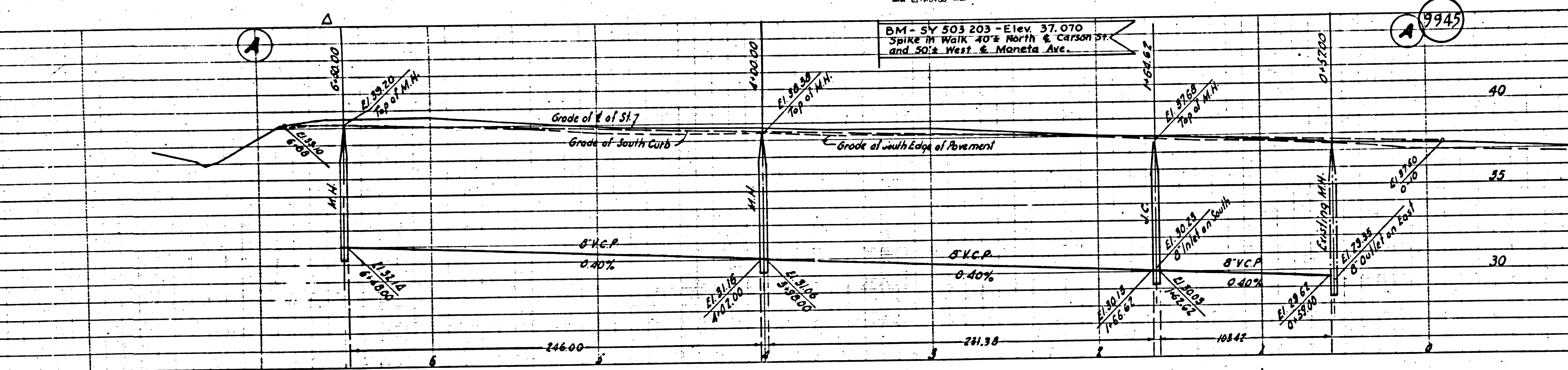
RECEIVED
 JAN 18 1950

Checked between 2-6-50

CHECKED BY: **[Signature]** DEC 16 1949
 CHIEF OF COUNTY ENGINEER OFFICE NO. 1103



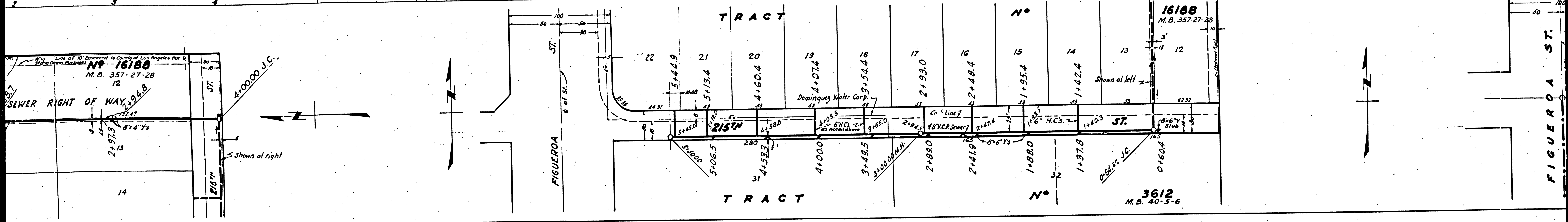
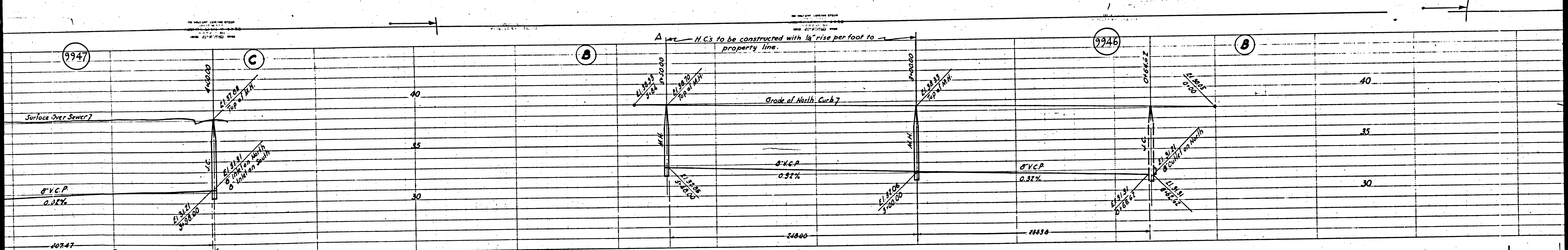
INDEX MAP
 Scale: 1" = 60'
 P.C. NO. 1174 - J.N. 3264



TRACT
 No 3612
 M. B. 40-5-6

TRACT
 No 16180
 M. B. 357-27-28

Trim Line



67

