

10034

USE STANDARD MANHOLE FRAMES AND COVERS 5'-0" DIA.
 USE STANDARD STRENGTH PIPE
 USE CEMENT MORTAR FOR ALL VITRIFIED CLAY PIPE JOINTS
 RE SURFACE ALL TRENCH WITHIN PAVED AREA TO MEET LOS ANGELES COUNTY ROAD DEPT. REQUIREMENTS
 CONSTRUCT HOUSE CONNECTIONS WITH INVERT AT PROPERTY LINE
 5 FEET READY CURB GRADE EXCEPT AS NOTED
 CHASE FOUR FEET OF SEWER AT POINTS OF INTERFERENCE WITH BOULDS 5'-0" DIA.
 ALL STRUCTURES SHALL BE BRICK SEWER STRUCTURES 5'-0" DIA.

Note: No representation of the County Engineer will be made as to any portion of the work. The owner or his authorized representative shall furnish the County Engineer with grade sheets and stationing of all house connections and Y branches and shall provide stakes to them of the proper location with bearing, plus, making allowance of 60 feet shall be required in writing by the owner or his representative. No revision shall be made in these plans without approval of the County Engineer.

PROFILE ALIGNMENT AND GRADE OF
SANITARY SEWERS
 TO BE CONSTRUCTED IN
TRACT NO. 16091
 PARTLY IN THE CITY OF ARCADIA AND PARTLY IN THE UNINCORPORATED TERRITORY OF THE COUNTY OF LOS ANGELES
PRIVATE CONTRACT NO. 1173

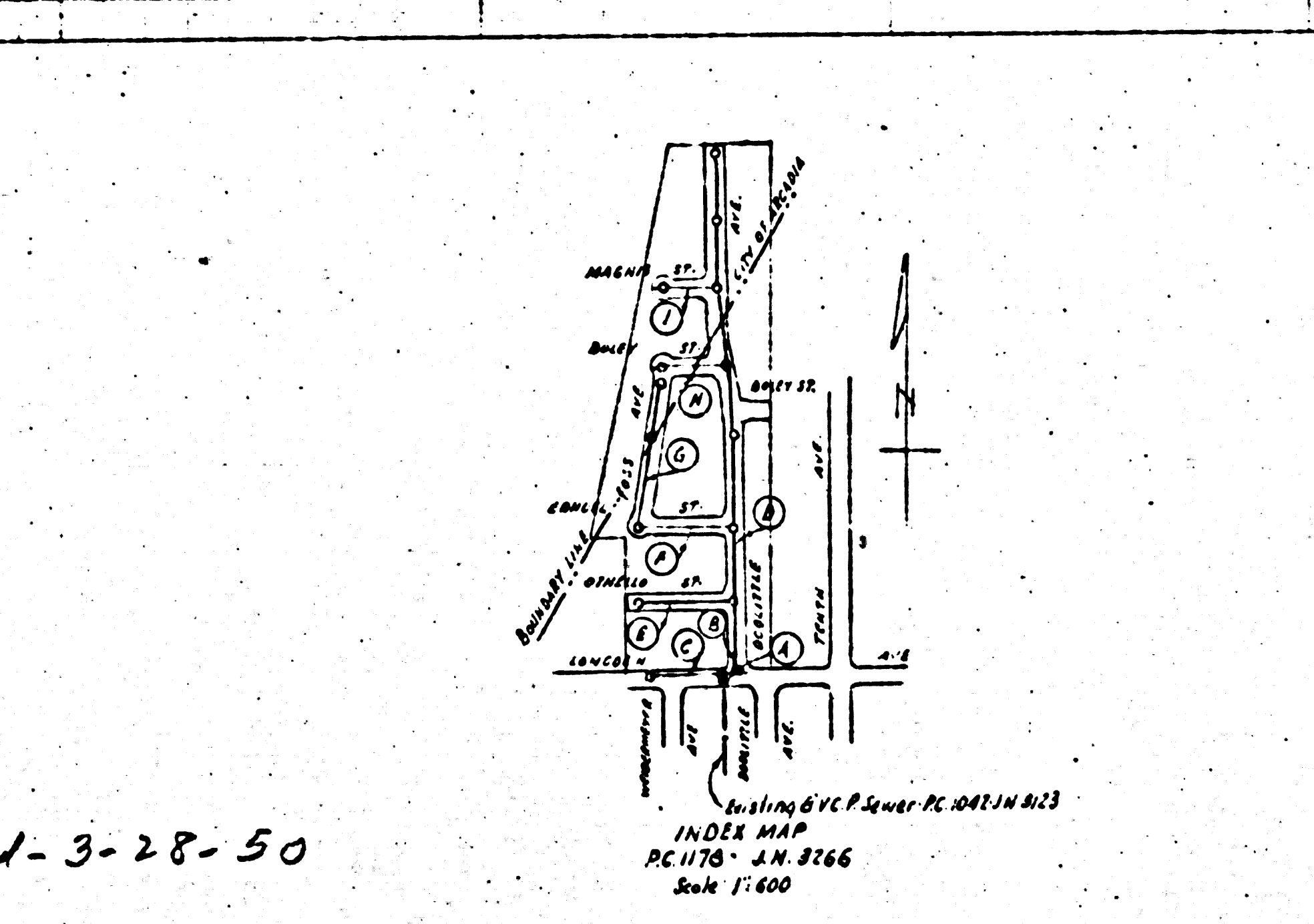
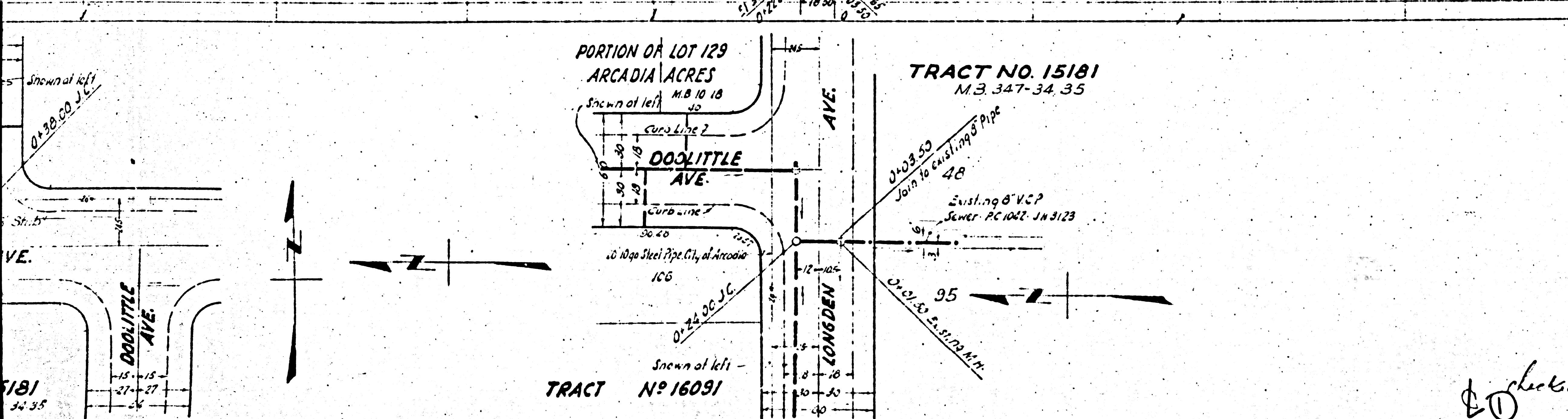
W.S. 25

ONE SHEET

SCALE VERT. 1" = 4'
 HORIZ. 1" = 40'

OCT. 1949

PREPARED IN THE OFFICE OF
 KARL F. TUTTLE



BY: *Karl F. Tuttle*
 P.E. 2000
 FOR LEGEND
 SEE PLAN NO. 3-0-64

NOTE: GRADES TO WHICH THIS IMPROVEMENT IS TO BE CONSTRUCTED ARE SHOWN ON PLANS AND PROFILES. READY POINTS FOR TOP OF CURB, CENTER LINE OF STREET OR CENTER LINE OF ALLEY ARE SHOWN BY CIRCLES ON PROFILES AT ALL POINTS BETWEEN DESIGNATED POINTS. THE GRADE SHALL BE ESTABLISHED SO AS TO CONFORM TO A STRAIGHT LINE DRAWN BETWEEN SAID DESIGNATED POINTS.

THIS DRAWING AND THE DATA HEREON ARE HEREBY MADE A PART OF THE SPECIFICATIONS. WORK SHALL BE CONSTRUCTED ACCORDING TO THE SPECIFICATIONS OF THE COUNTY ENGINEER. BEFORE WORK CAN BE STARTED THE CONTRACTOR MUST OBTAIN A PERMIT TO EXCAVATE IN COUNTY STREETS FROM THE U.S. COUNTY ROAD DIST. DIST. ENGINEER AND MAKE A DEPOSIT WITH THE COUNTY ENGINEER \$100 IN CASH OR CHECK TO COVER THE COST OF CONSTRUCTION INSPECTION AND RECORD PLANS.

APPROVAL OF THIS PLAN BY THE COUNTY OF LOS ANGELES DOES NOT CONSTITUTE A REPRESENTATION AS TO THE ACCURACY OF THE LOCATION OF OR THE EXISTENCE OR NON-EXISTENCE OF ANY UNDERGROUND UTILITY PIPE OR STRUCTURE WITHIN THE LIMITS OF THIS PROJECT.

COUNTY OF LOS ANGELES, CALIFORNIA

APPROVED: *E. E. ...* COUNTY ENGINEER
 APPROVED: *...* CHIEF ENGINEER OF COUNTY SANITATION DISTRICT NO. 2

APPROVED: *...* CHECKED BY: *...*

INDEX MAP
 PC 1170 - S.W. 3166
 Scale 1" = 600'

1173

Check 3-28-50

FC 1173

