

FOR LEGEND  
SEE PLAN NO. 30.64

NOTES:  
 GRADES TO WHICH THIS IMPROVEMENT IS TO BE CONSTRUCTED ARE SHOWN ON PLANS AND PROFILES.  
 GRADE POINTS POSITION ON CURB CENTER LINE OR CENTER LINE OF ALLEY ARE SHOWN BY CIRCLES ON PROFILES AT ALL POINTS BETWEEN DESIGNATED POINTS THE GRADE SHALL BE ESTABLISHED SO AS TO CONFORM TO A STRAIGHT LINE BETWEEN SAID DESIGNATED POINTS.  
 ELEVATIONS ARE IN FEET ABOVE U.S.M.S. DATUM OF MEAN SEA LEVEL.  
 THIS DRAWING AND THE DATA HEREON ARE HEREBY MADE A PART OF THE SPECIFICATIONS.  
 CONTRACTOR SHALL BE CONSTRUCTED ACCORDING TO SPECIFICATIONS ON FILE IN THE OFFICE OF THE COUNTY ENGINEER AND SHALL BE PROSECUTED HEREIN IN THE PRESENCE OF THE COUNTY ENGINEER.  
 BEFORE WORK CAN BE STARTED THE CONTRACTOR MUST OBTAIN A PERMIT TO EXCAVATE IN COUNTY STREETS FROM THE L.A. COUNTY PUBLIC WORKS DEPARTMENT AND MAKE A DEPOSIT WITH THE COUNTY ENGINEER'S OFFICE, COUNTY ENGINEERING BLDG., SUFFICIENT TO COVER THE COST OF CONSTRUCTION INSPECTION AND RECORD PLANS.

COUNTY OF LOS ANGELES, CALIFORNIA

APPROVED: *Edward*  
COUNTY ENGINEER

APPROVED: *Ree Kay*  
CHIEF ENGINEER OF COUNTY SANITATION DISTRICT NO. 18

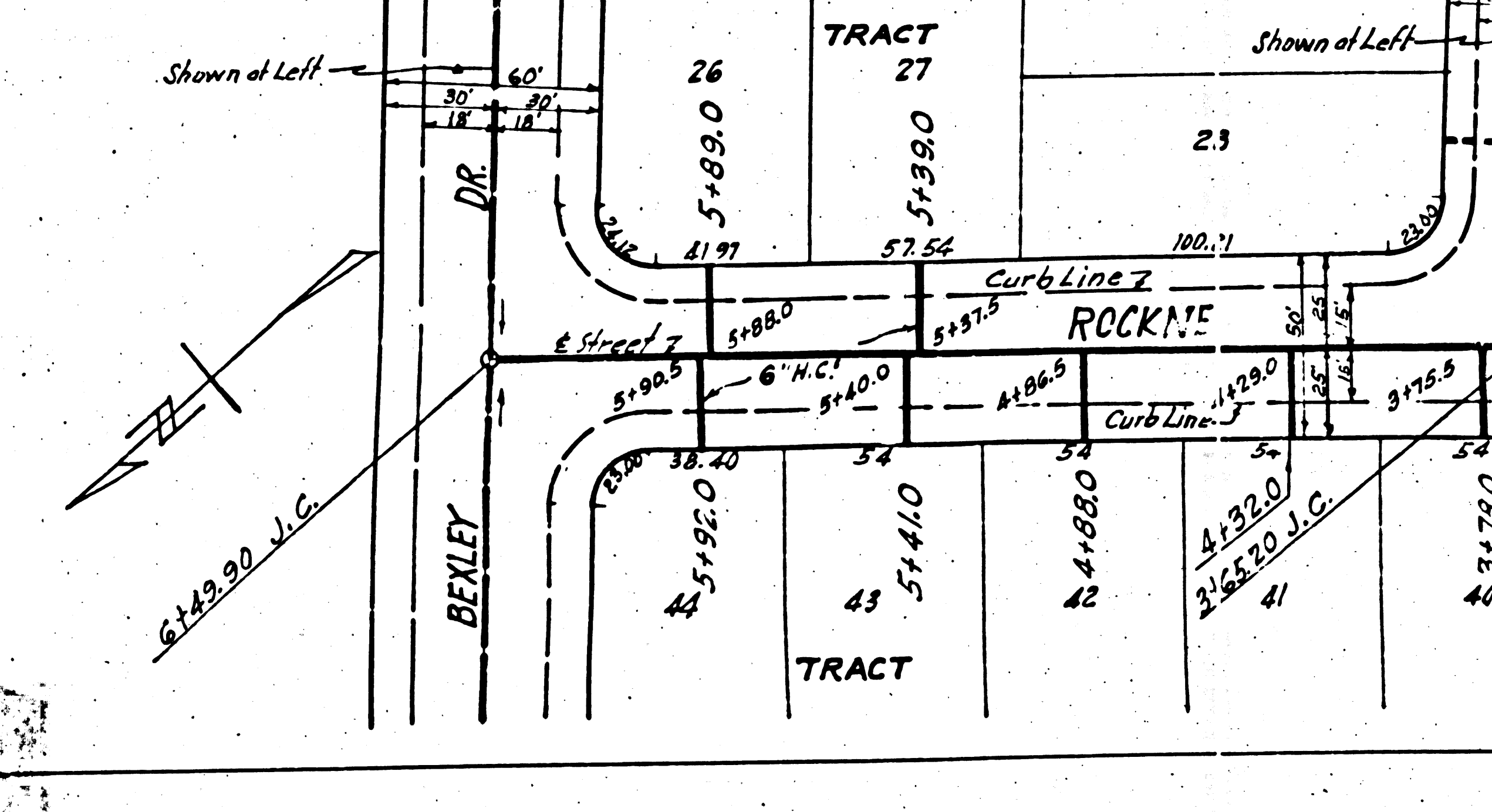
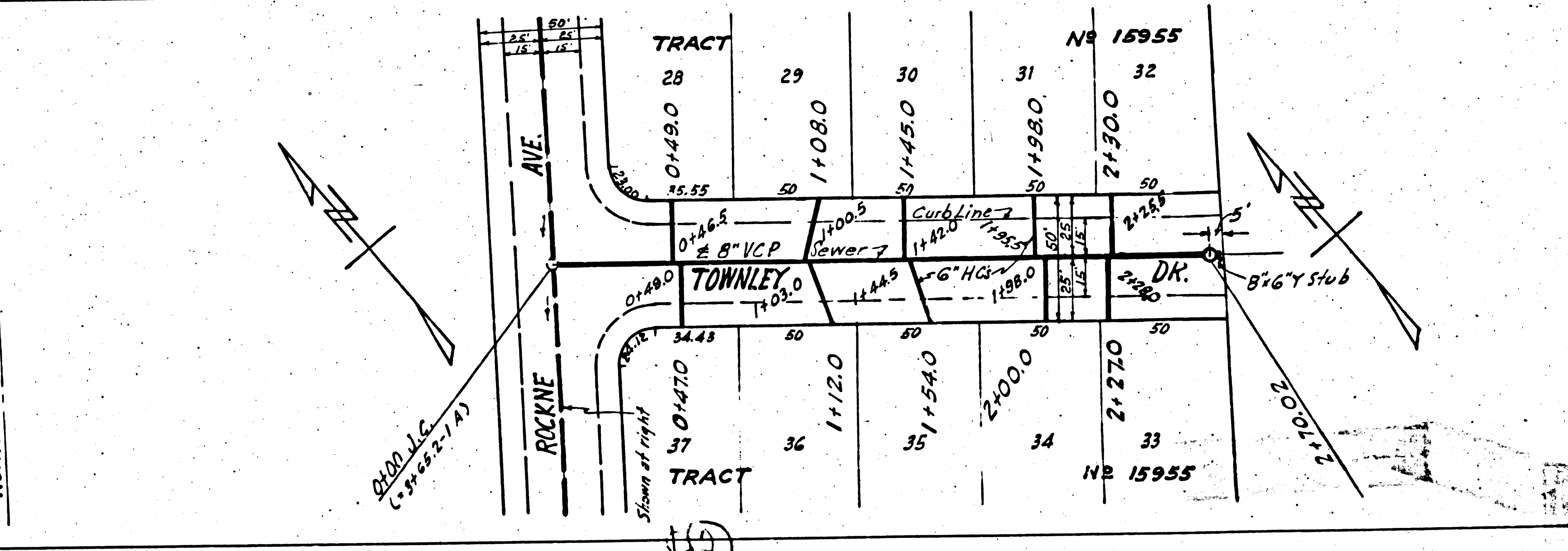
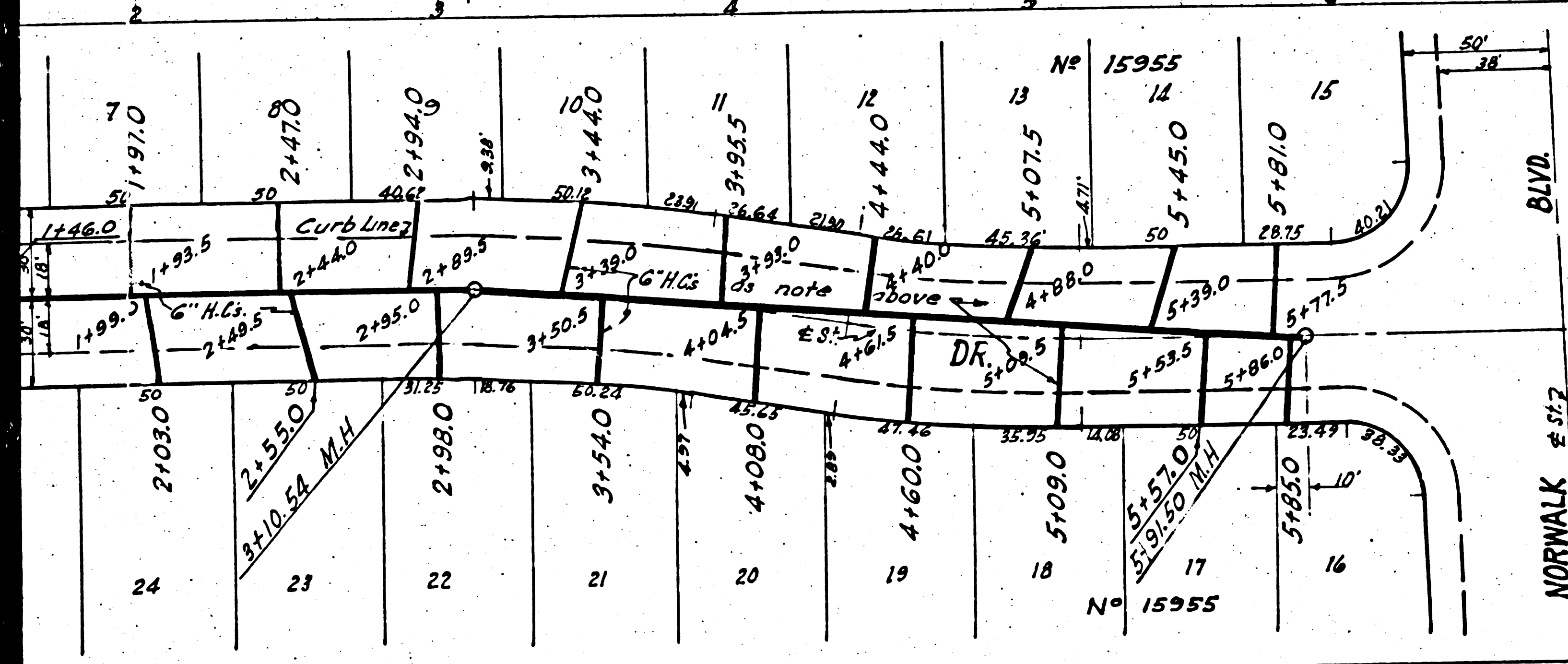
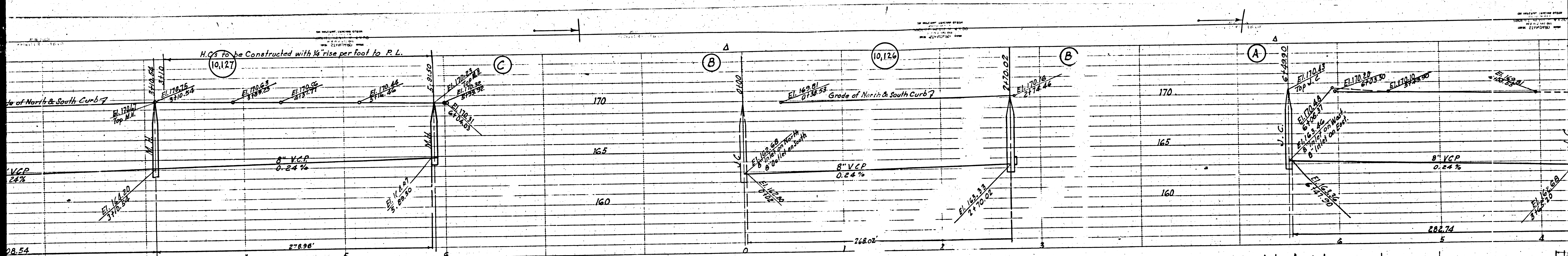
CHECKED BY: *I. P. T.*  
DEPUTY COUNTY ENGINEER OFFICE NO. 11249

10/12/49

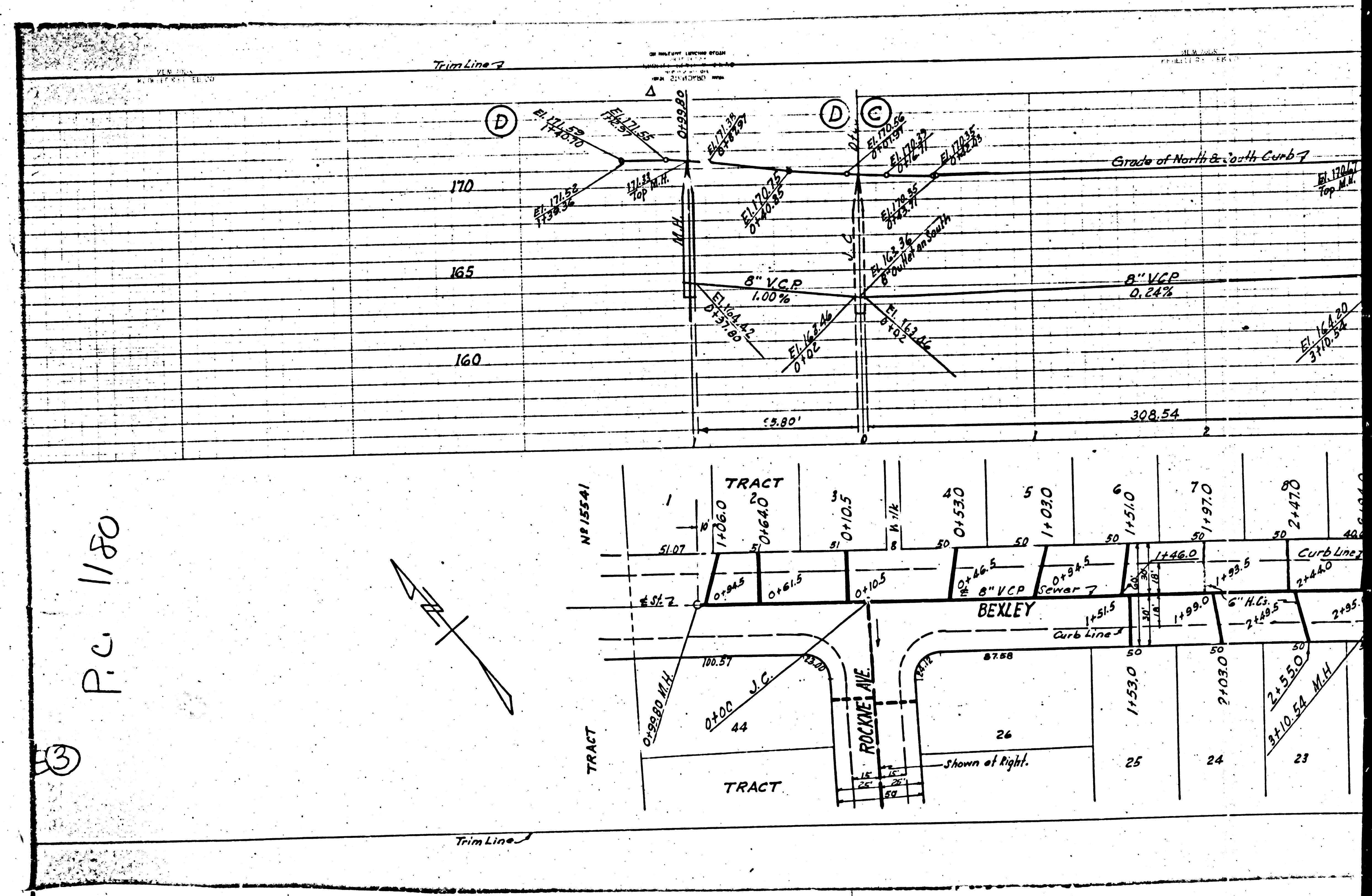
081129  
601180

10



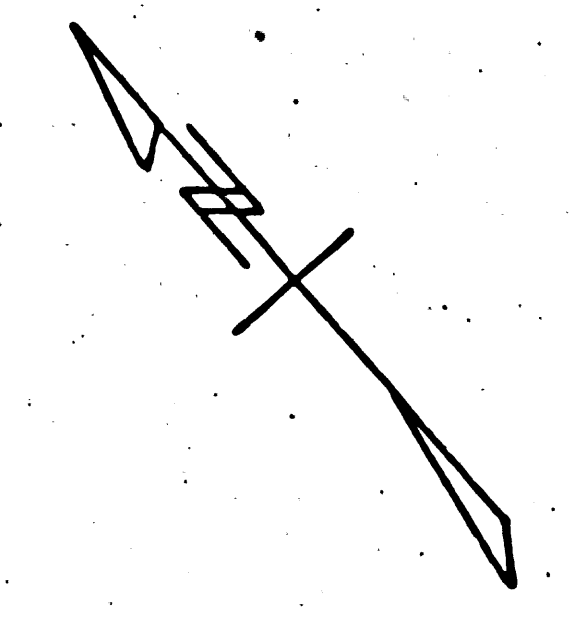






P.C. 1180

③



Trim Line

Shown at Right.

25

24

23

TRACT

TRACT

TRACT

TRACT

TRACT

NR 15541

TRACT

TRACT

TRACT

TRACT

1

2

3

4

5

6

7

8

9

10

11

12

13

14

15

16

17

18

19

20

21

22

23

24

25

26

27

28

29

30

31

32

33

34

35

36

37

38

39

40

41

42

43

44

45

46

47

48

49

50

51

52

53

54

55

56

57

58

59

60

61

62

63

64

65

66

67

68

69

70

71

72

73

74

75

76

77

78

79

80

81

82

83

84

85

86

87

88

89

90