

9759

1. Use Standard Handbook Form and Cover S-117
 2. Use Standard Strength Pipe
 3. Use Cement Mortar for all Vitrified Clay Pipe Joints
 4. All surfaces of trench within paved area to meet Los Angeles County Road Dept. Requirements
 5. Construct House Connections as 1/4" Rise per ft. to property line
 6. All structures shall be brick sewer structures 3'-0" dia. to house 4' of sewer at points of interference with pipe per S-119.

NOTE:
 No representative of the County Engineer will survey or lay out any portion of the work. The owner or his authorized representative shall furnish the County Engineer with grade sheets and stations at all points of construction and branches and shall provide stakes for top of pipe, proper locations with establishing plainly marked. Any change of location shall be requested in writing by the owner or his representative.
 No revision shall be made in these plans without approval of the County Engineer.

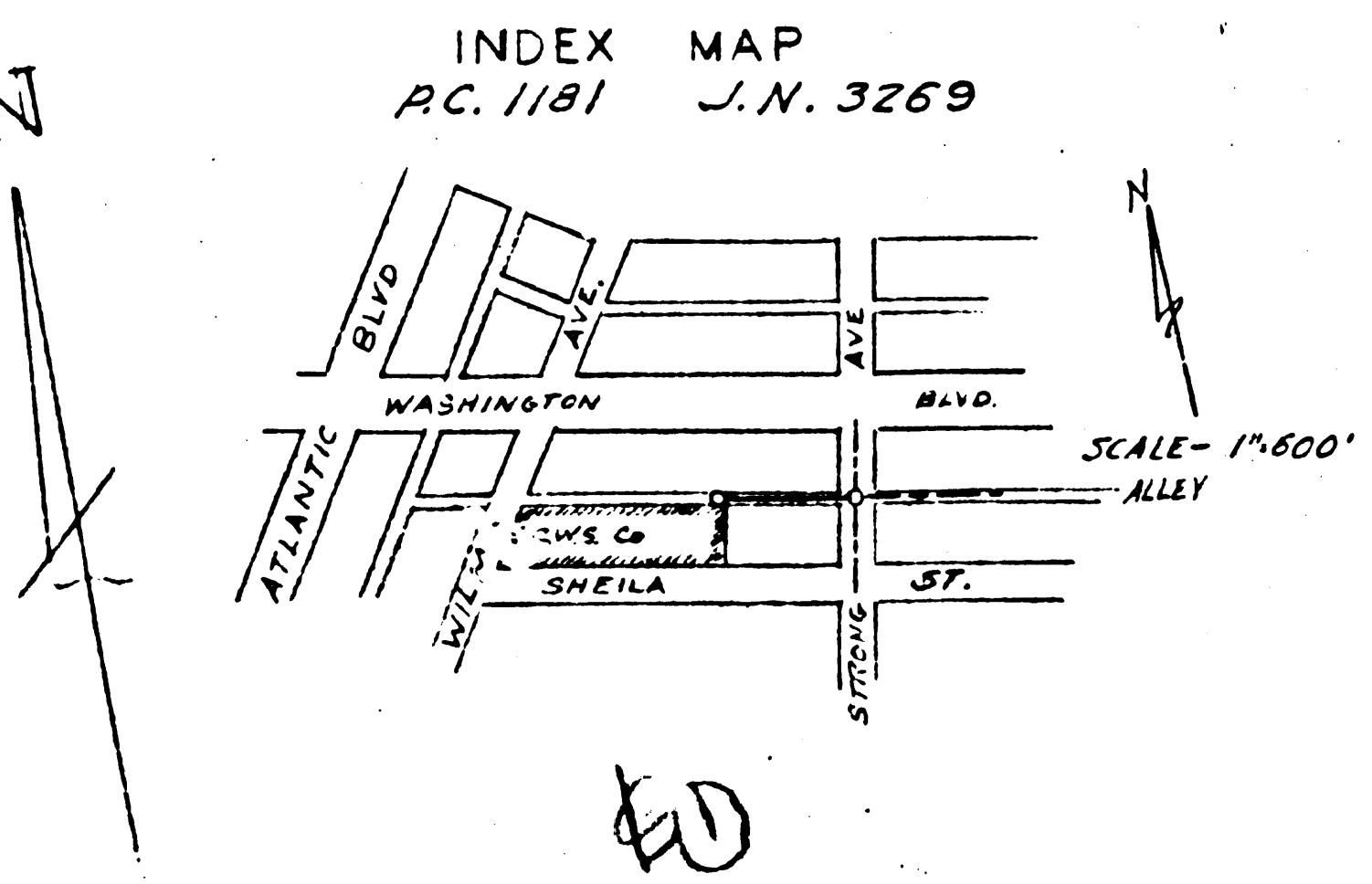
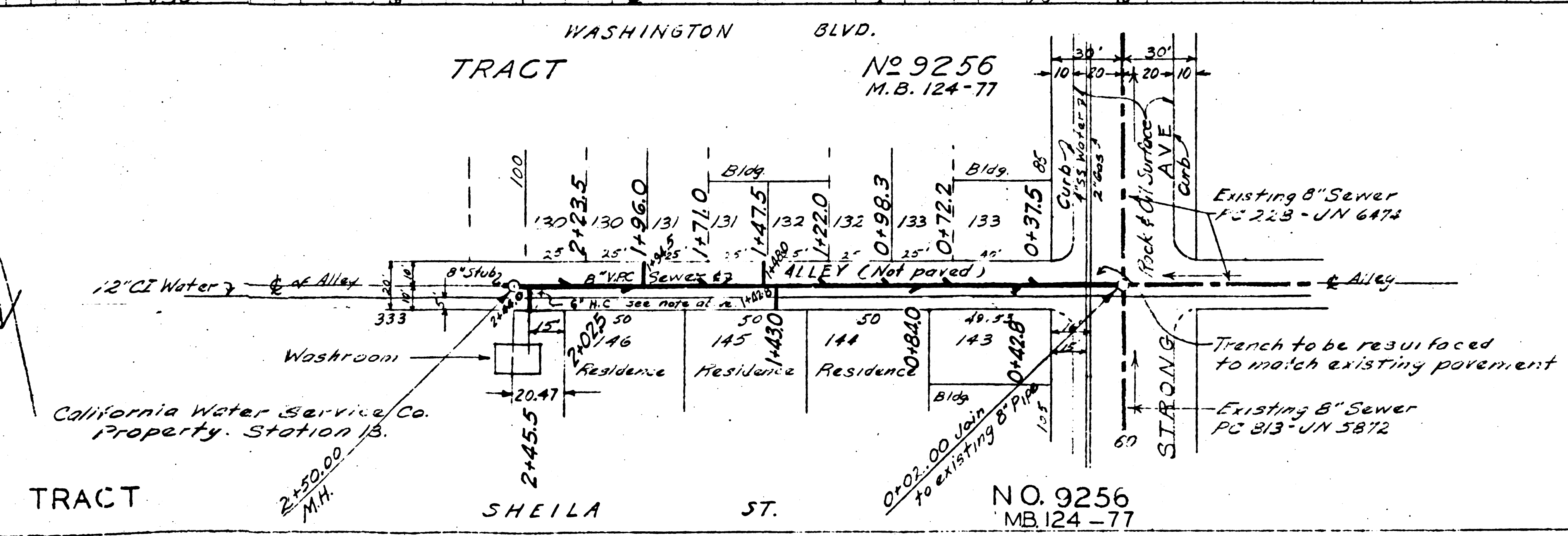
Scale: Vertical 1"=4'
 Horizontal 1"=40'

PROFILE, ALIGNMENT AND GRADE OF
SANITARY SEWER
 TO BE CONSTRUCTED IN
FIRST ALLEY SOUTH OF WASHINGTON BLVD
 BETWEEN STRONG AVE AND 250' WESTERLY
 IN TRACT NO. 9256 MB 124 PAGE 77

PRIVATE CONTRACT NO. 1181
 WS 36
 SHEET 1 OF 1 SHEET - OCTOBER 1949
 PREPARED IN THE OFFICES OF
CALIFORNIA WATER SERVICE CO.

BY A. V. Leggett 7615
 REG. CE. NO.

FOR LEGEND
 SEE PLAN NO. S-a-64



NOTE:
 Grades to which this improvement is to be constructed are shown on Plans and profile. Grade points for top of curb, center line of street or center line of alley are shown by circles on profiles. At all points between designated points the grade shall be established so as to conform to a straight line drawn between said designated points.
 Elevations are in feet above U.S.G.S. datum or mean sea level.
 This drawing and the data hereon are hereby made a part of the specifications on file in the office of the County Engineer and shall be prosecuted only in the presence of the County Engineer.
 Before work can be started, the Contractor must obtain a permit to excavate in County streets from the L.A. County Road Dept. 314 So Main Street, Los Angeles 12, Calif., with the County Engineer, 828 L.A. County Eng. Building, sufficient to cover the cost of construction inspection and record plans.
 Approval of this plan by the County of Los Angeles does not constitute a representation as to the accuracy of the location of, or the existence or non-existence of, any underground utility, pipe or structure within the limits of this project.

COUNTY OF LOS ANGELES, CALIFORNIA
 APPROVED: [Signature] COUNTY ENGINEER
 APPROVED: [Signature] CHIEF ENGINEER OF COUNTY SANITATION DISTRICT NO. 2
 CHECKED BY: J. T. Rostrom 10/21/49 OFFICE OF COUNTY ENGINEER REG. CE. NO. 7105