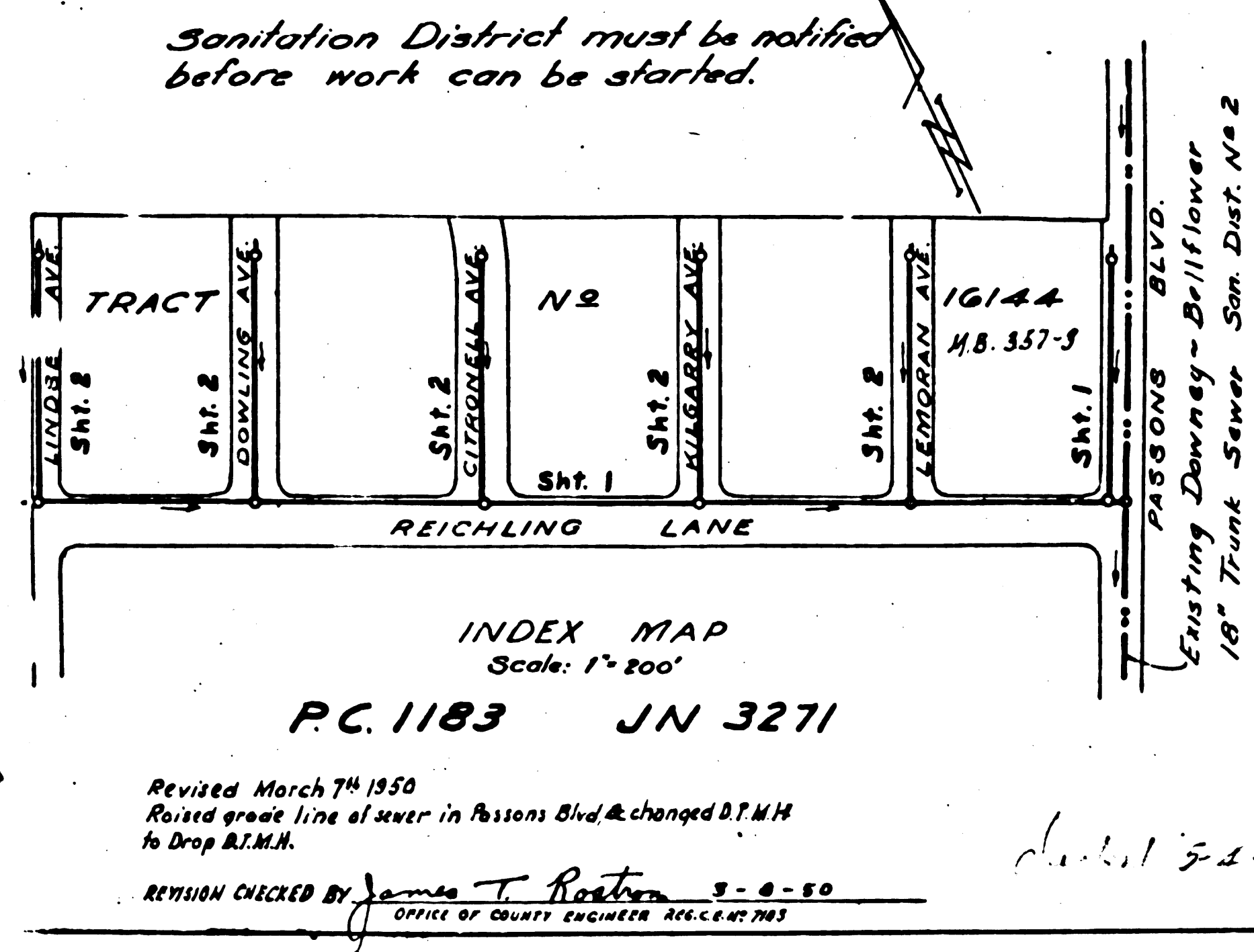


10,230

USE STANDARD STRENGTH PIPE EXCEPT AS NOTED  
 USE CEMENT MORTAR FOR ALL VITRIFIED CLAY PIPE JOINTS  
 ENCASE FOUR FEET OF SEWER AT POINTS OF INTERFERENCE WITH POLES AS PER S. 418  
 CONSTRUCT HOUSE CONNECTIONS WITH INVERT AT CURB LINE 18 FEET BELOW CURB GRADE  
 ALL STRUCTURES SHALL BE BUILT SEWER STRUCTURES AS PER PLAN NO. S-1 FOR  
 USE STANDARD MANHOLE FRAMES AND COVERS AS PER PLAN NO. S-17  
 RESURFACE ALL TRENCHES WITHIN PAVED AREA TO MEET LOS ANGELES COUNTY ROAD DEPT. OR  
 STATE HIGHWAY REQUIREMENTS  
 NO REVISIONS SHALL BE MADE IN THESE PLANS WITHOUT APPROVAL OF THE COUNTY ENGINEER  
 NO REPRESENTATIVE OF THE COUNTY ENGINEER SHALL SURVEY OR LAY OUT ANY PORTION  
 OF THE WORK  
 THE OWNER OR HIS AUTHORIZED REPRESENTATIVE SHALL FURNISH THE COUNTY ENGINEER WITH  
 GRADE SHEETS AND STATIONS OF ALL HOUSE CONNECTIONS AND Y BRANCHES, AND SHALL  
 PROVIDE STAKES FOR THEM AT THEIR PROPER LOCATIONS WITH STATIONING PLAINLY MARKED  
 ANY CHANGE OF LOCATION SHALL BE REQUESTED IN WRITING BY THE OWNER OR HIS  
 REPRESENTATIVE

PROFILE ALIGNMENT AND GRADE OF  
**SANITARY SEWERS**  
 TO BE CONSTRUCTED IN  
**REICHLING LANE**  
 BETWEEN PASSONS BLVD. AND LINDSEY AVE.  
 AND  
**PASSONS BOULEVARD**  
 BETWEEN REICHLING LANE AND NORTH BDRY.  
 LINE OF TRACT NO. 16144.

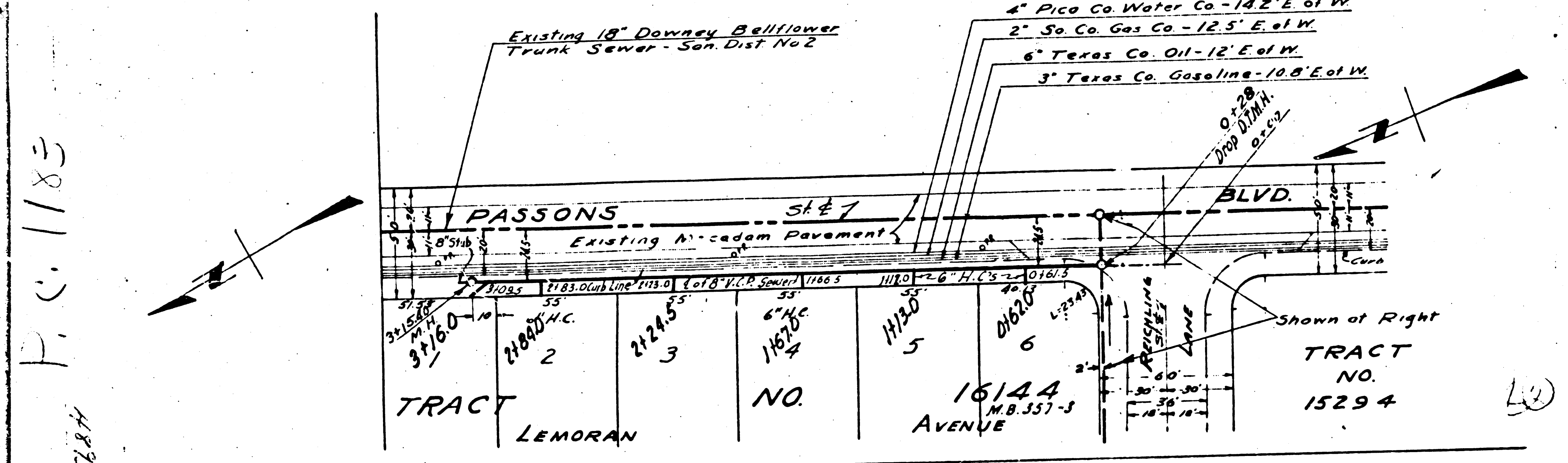
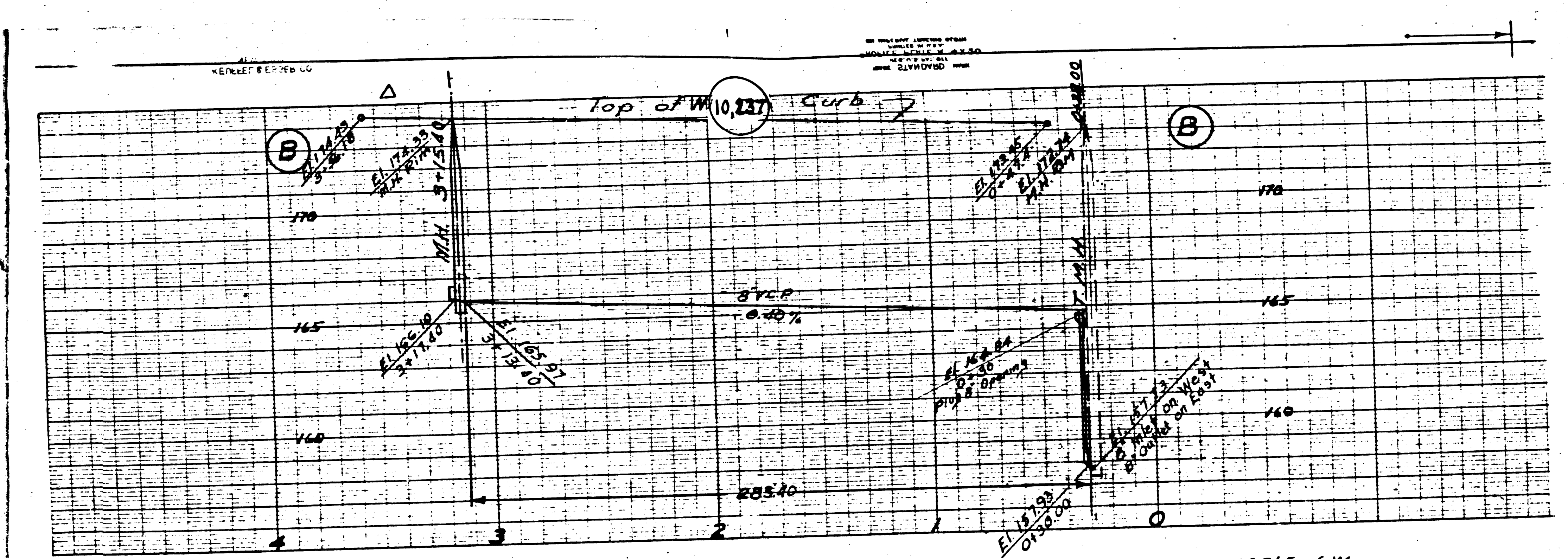
PRIVATE CONTRACT NO. 1183  
 W. S. 36  
 SHEET 1 OF 2 SHEETS  
 SCALE: VERT. 1"=4'  
 HORIZ. 1"=40'  
 SEPT. 1950  
 PREPARED IN THE OFFICES OF  
**KEMMERER ENG. CO.**  
 BY *John W. Kemmerer*  
 REG. C. E. NO. 172



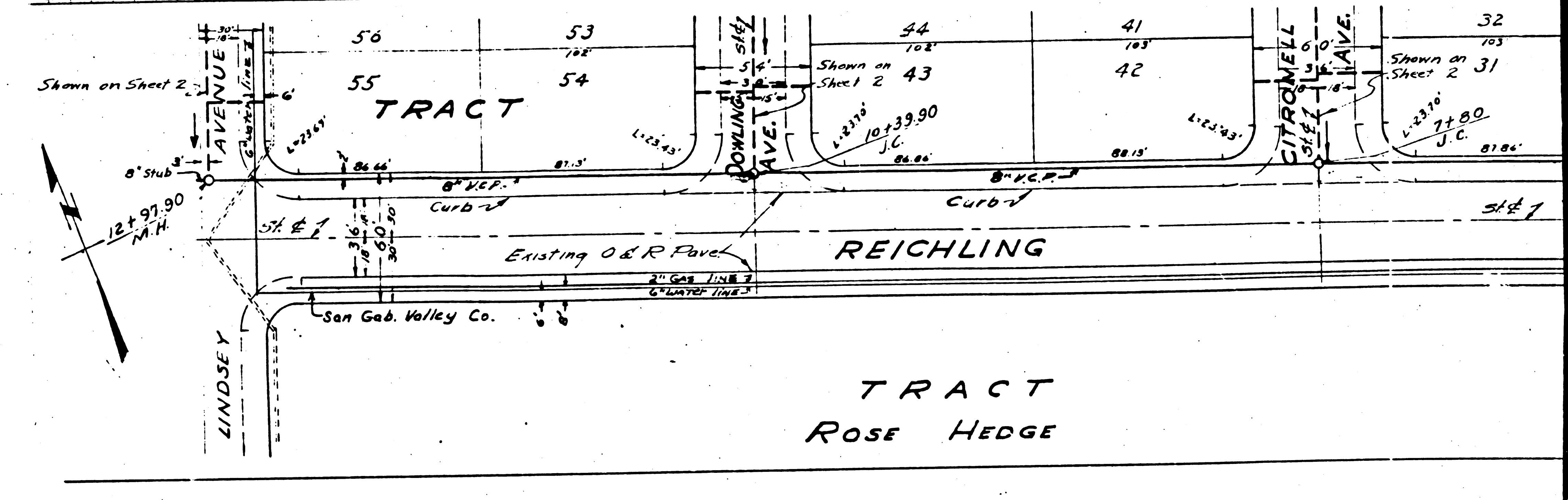
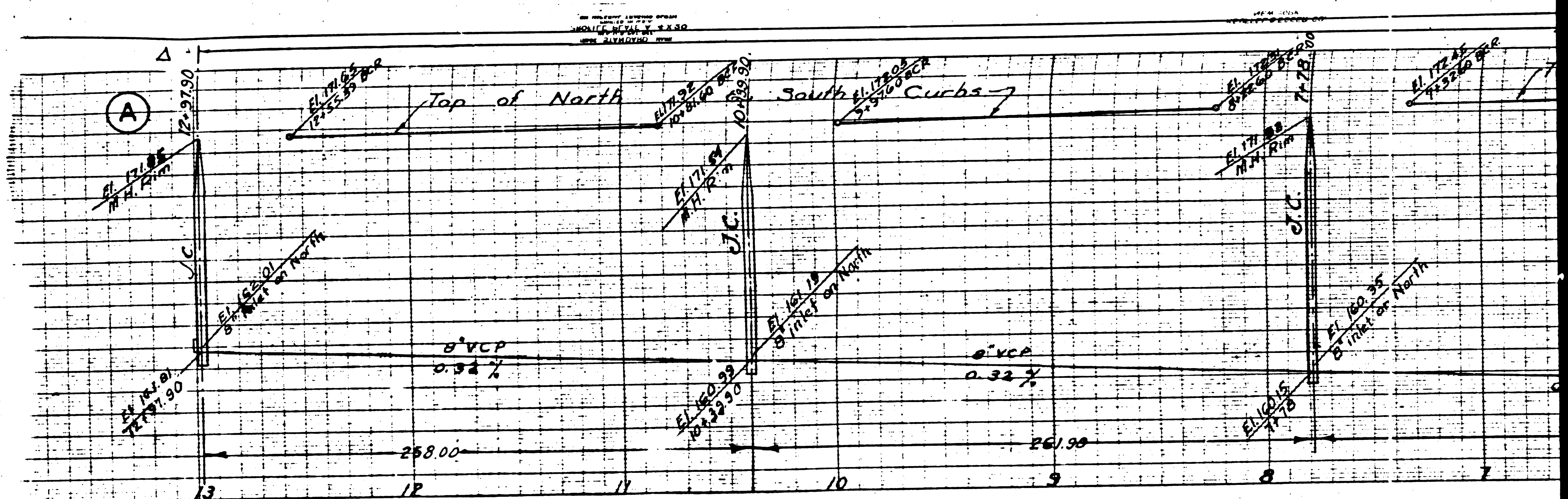
FOR LEGEND  
 SEE PLAN NO. S-2-54

NOTE  
 GRADES TO WHICH THIS IMPROVEMENT IS TO BE CONSTRUCTED ARE SHOWN ON PLANS AND PROFILES  
 GRADE POINTS FOR TOP OF CURB, CENTER LINE OF STREET OR CENTER LINE OF ALLEY ARE SHOWN BY  
 CIRCLES ON PROFILES AT ALL POINTS BETWEEN DESIGNATED POINTS THE GRADE SHALL BE SET TO MATCH  
 SO AS TO CONFORM TO A STRAIGHT LINE DRAWN BETWEEN SAID DESIGNATED POINTS.  
 ELEVATIONS ARE IN FEET ABOVE U. S. S. DATUM OR MEAN SEA LEVEL.  
 THIS DRAWING AND THE DATA HEREON ARE HEREBY MADE A PART OF THE SPECIFICATIONS  
 WHICH GOVERN THE CONSTRUCTION OF THE WORK AND SHALL BE PROSECUTED ONLY IN THE OFFICE OF THE  
 COUNTY ENGINEER, AND SHALL BE PROSECUTED ONLY IN THE PRESENCE OF THE COUNTY ENGINEER.  
 BEFORE WORK CAN BE STARTED, THE CONTRACTOR MUST OBTAIN A PERMIT TO EXCAVATE IN  
 COUNTY STREETS FROM THE COUNTY ROAD DEPT. IN SAN ANTONIO MAKE A DEPOSIT  
 WITH THE COUNTY ENGINEER, ROAD DEPT. \$200.00 PER STREET, SUFFICIENT TO COVER THE COST OF  
 CONSTRUCTION INSPECTION AND RECORD PLANS.  
 IF WORK IS TO BE DONE IN A STATE HIGHWAY, A PERMIT MUST BE OBTAINED FROM THE STATE  
 OF CALIFORNIA, DIVISION OF HIGHWAYS, 808 STATE BUILDING, AFTER MAKING THE DEPOSIT WITH THE  
 COUNTY ENGINEER.  
 Approval of this plan by the County of Los Angeles does not constitute a  
 representation as to the accuracy of the location of, or the existence of,  
 non-existence of, any underground utility, pipe, or structure within the  
 limits of this project.

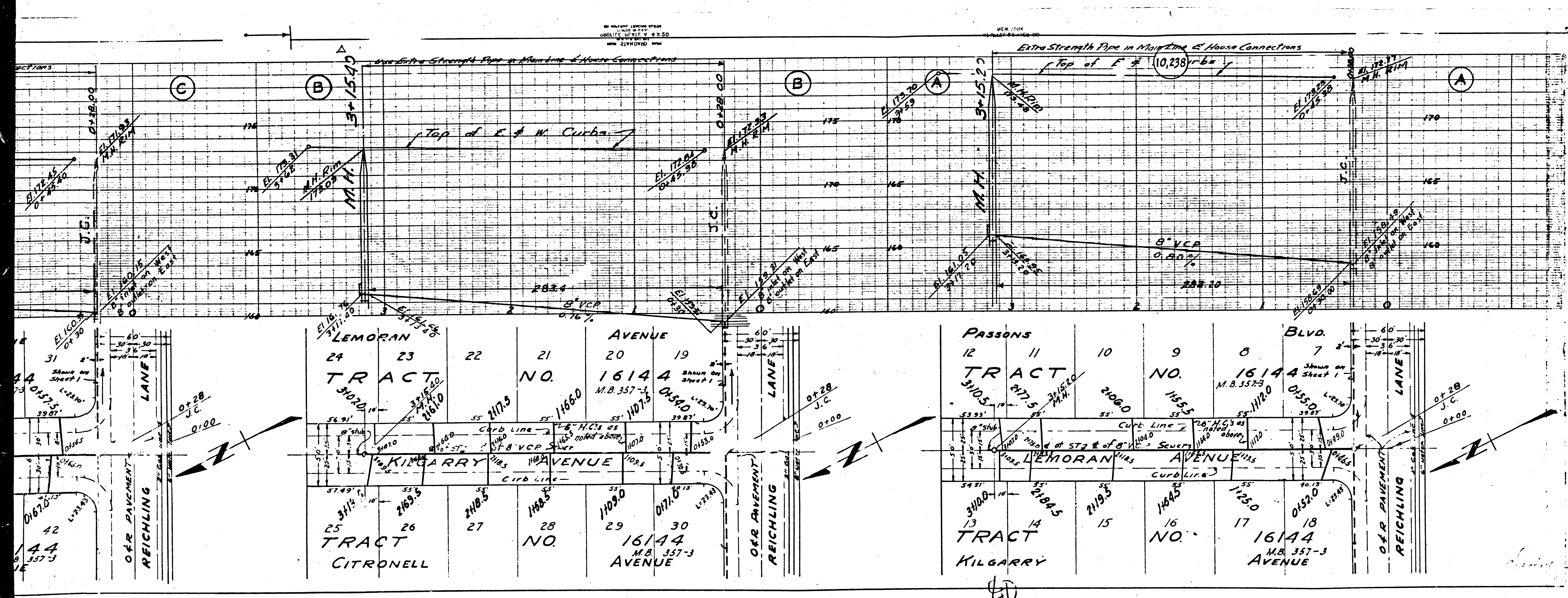
COUNTY OF LOS ANGELES, CALIFORNIA  
 APPROVED *[Signature]*  
 RECEIVED  
 MAR 23 1950  
 CHECKED BY *[Signature]*  
 OFFICE OF COUNTY ENGINEER LOS ANGELES



P.C. 1183  
5684



TRACT  
ROSE HEDGE



PROFILE ALIGNMENT AND GRADE OF  
**SANITARY SEWERS**  
 TO BE CONSTRUCTED IN  
**LEMORAN AVENUE, KILGARRY AVENUE,  
 CITRONELL AVENUE, DOWLING AVENUE,  
 AND LINDSEY AVENUE**  
 BETWEEN REICHLING LANE AND NORTHERLY  
 LINE OF TRACT NO. 16144.

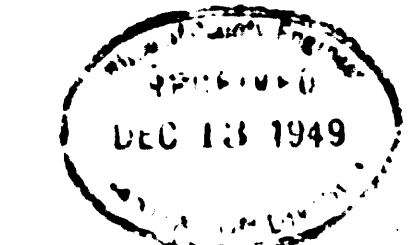
PRIVATE CONTRACT NO. 11133  
 W.S. 36  
 SHEET TWO OF TWO SHEETS  
 SCALE: VERT. 1"=40'  
 HORIZ. 1"=40' SEPT. 1949.

PREPARED IN THE OFFICES OF  
**KEMMERER ENG. CO.**

BY: *John P. Kemmerer*  
 REG. C.E. NO. 272

FOR LEGEND SEE PLAN NO. S-2-64.

FOR CONSTRUCTION NOTES  
 SEE SHEET ONE.



COUNTY OF LOS ANGELES, CALIFORNIA.

APPROVED: *[Signature]*  
 COUNTY ENGINEER

APPROVED: *[Signature]*  
 ACTING COUNTY ENGINEER

CHECKED BY: *[Signature]*  
 COUNTY ENGINEER

Trim Line

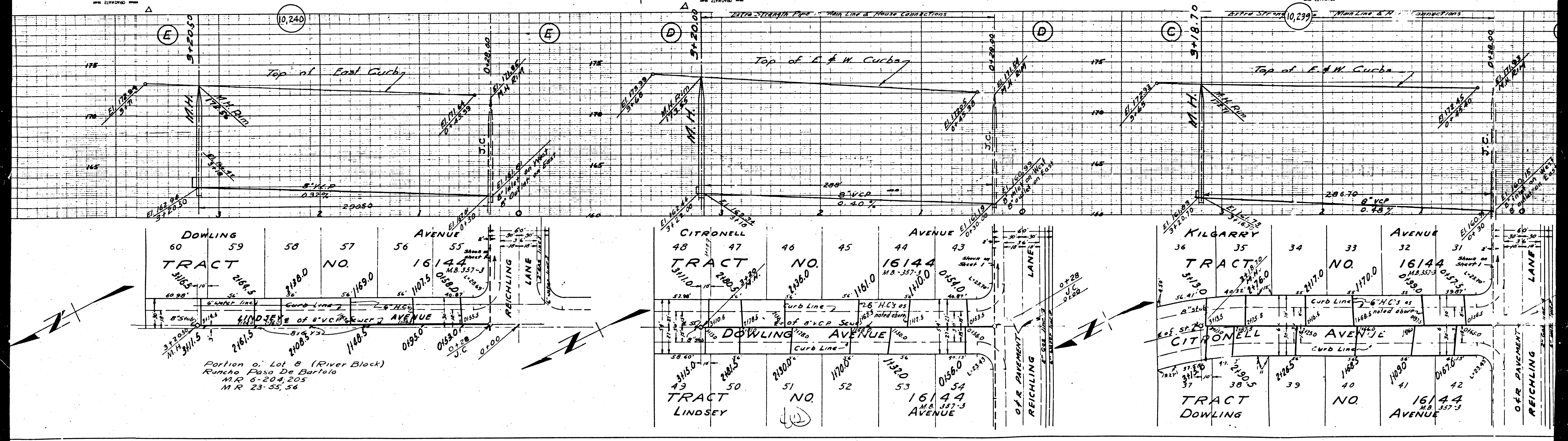
NEW YORK  
ENGINEERING OFFICE  
INCORPORATED  
215 W. 42ND ST.  
NEW YORK 36, N.Y.

NEW YORK  
ENGINEERING OFFICE  
INCORPORATED  
215 W. 42ND ST.  
NEW YORK 36, N.Y.

NEW YORK  
ENGINEERING OFFICE  
INCORPORATED  
215 W. 42ND ST.  
NEW YORK 36, N.Y.

NEW YORK  
ENGINEERING OFFICE  
INCORPORATED  
215 W. 42ND ST.  
NEW YORK 36, N.Y.

NEW YORK  
ENGINEERING OFFICE  
INCORPORATED  
215 W. 42ND ST.  
NEW YORK 36, N.Y.



Portion of Lot 8 (River Block)  
Rancho Paso De Bartolo  
M.R. 6-20 & 205  
M.R. 23-55, 56

LINDSEY TRACT  
NO. 50

16144 AVENUE  
NO. 54

DOWLING TRACT  
NO. 39

16144 AVENUE  
NO. 42

