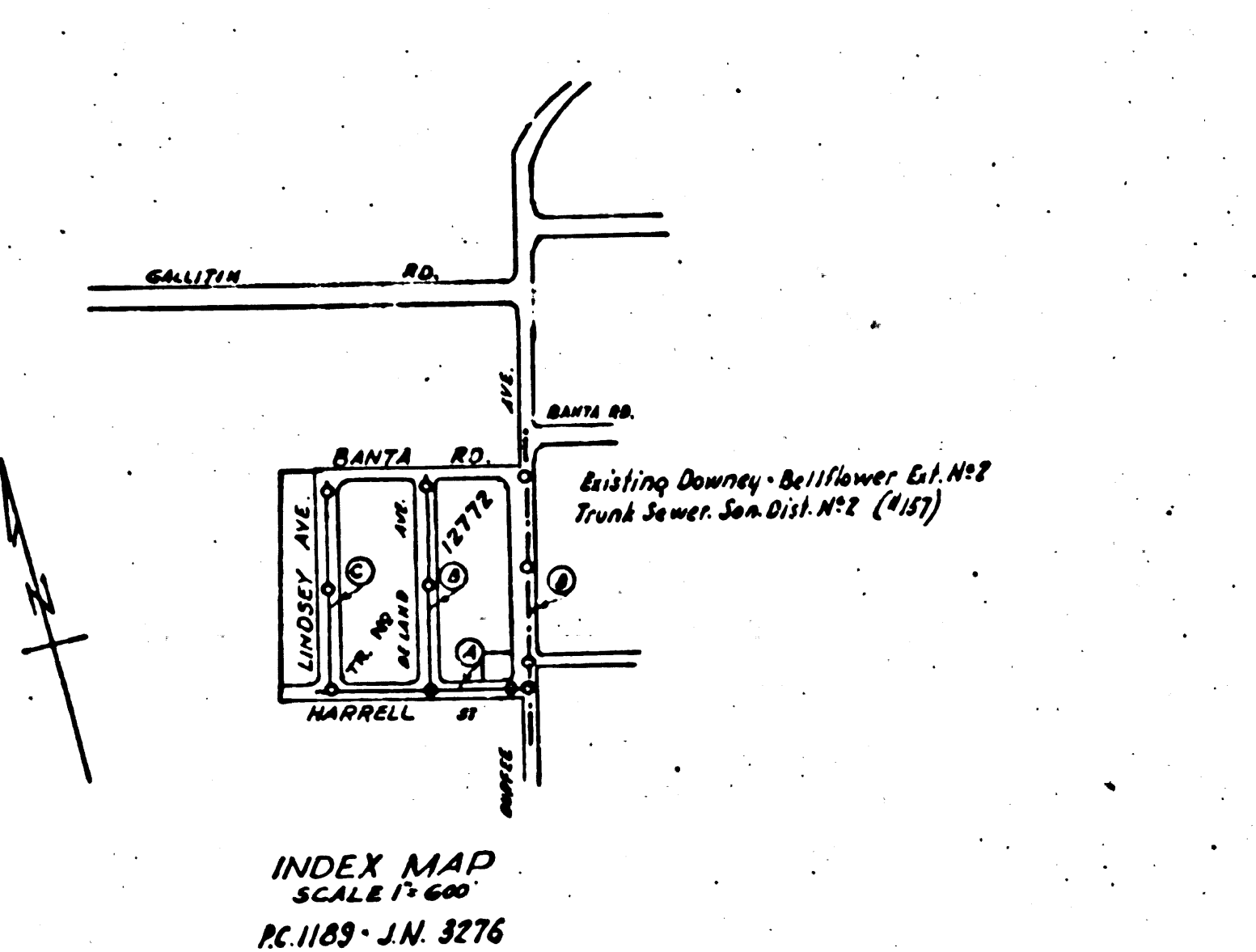
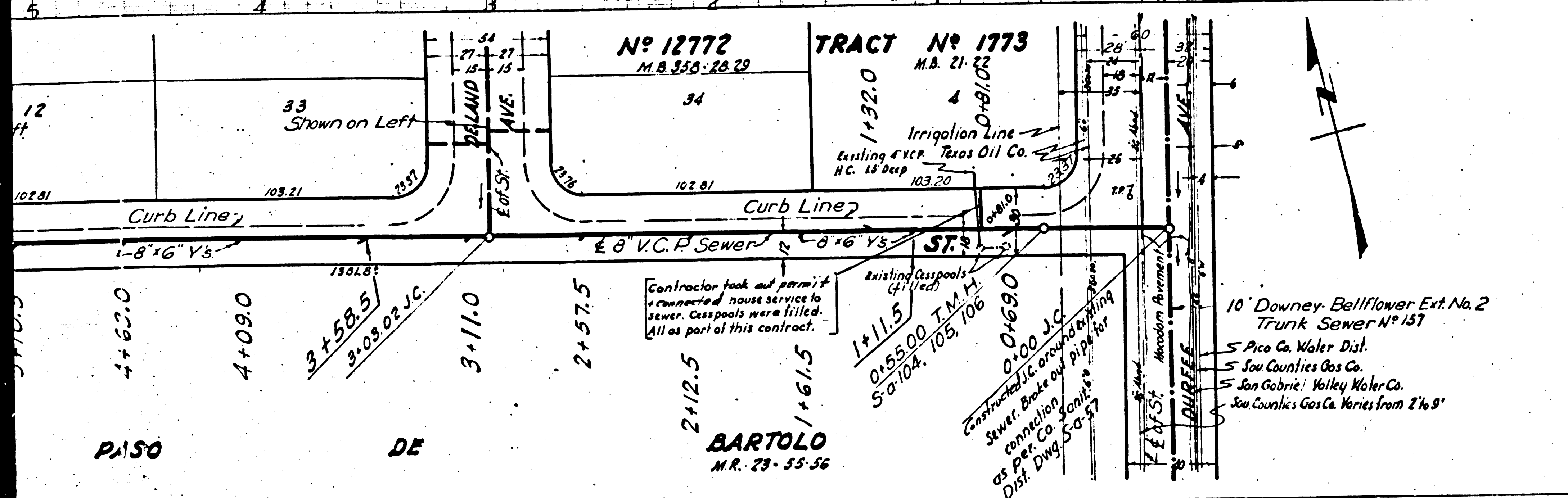


USE STANDARD MANHOLE FRAMES AND COVER 30x42
 USE STANDARD STRENGTH PIPE EXCEPT AS NOTED
 USE CEMENT MORTAR FOR ALL VITRIFIED CLAY PIPE JOINTS
 RESURFACE ALL TRENCH WITHIN PAVED AREA TO MEET LOS ANGELES COUNTY ROAD DEPT. REQUIREMENTS
 CONSTRUCT HOUSE CONNECTIONS WITH INVERT AT PROPERTY LINE 5 FT.
 BELOW CURB GRADE
 ENCASE FOUR FEET OF S.W.ER AT POINTS OF INTERFERENCE WITH ADJ. S.W.ER
 ALL STRUCTURES SHALL BE BRICK SEWER STRUCTURES 30x30
 PROVIDE STAKES ON PROPERTY LINES OR PROPERTY LINES PRODUCED AT RIGHT ANGLES TO THE SEWER LINE AT THE CENTER LINE OF EACH MANHOLE

Note:
 No representative of the County Engineer will survey or lay out any portion of the work.
 The contractor's authorized representative shall furnish the County Engineer with grade sheets and stations of all House Connections and Y Branches and shall provide stakes for them with identifying plainly marked. Any change of location shall be explained in writing to the engineer and his representative.
 No revisions shall be made in these plans without approval of County Engineer.

PROFILE ALIGNMENT AND GRADE OF
SANITARY SEWERS
 TO BE CONSTRUCTED IN
HARRELL STREET
 BETWEEN HARRELL AVE AND LINDSEY AVE
LINDSEY AVENUE
 DELAND AVENUE
 BETWEEN HARRELL ST. AND BANTA ROAD

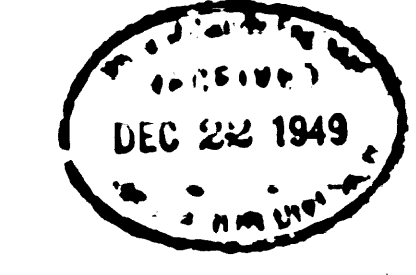
PRIVATE CONTRACT NO. 1189
 S.W.S. 86
 ONE SHEET
 PREPARED IN THE OFFICE OF
SEABOARD ENGINEERING CO.
 BY *Mark A. Nelson*



FOR LEGEND
 SEE PLAN NO. 30-64

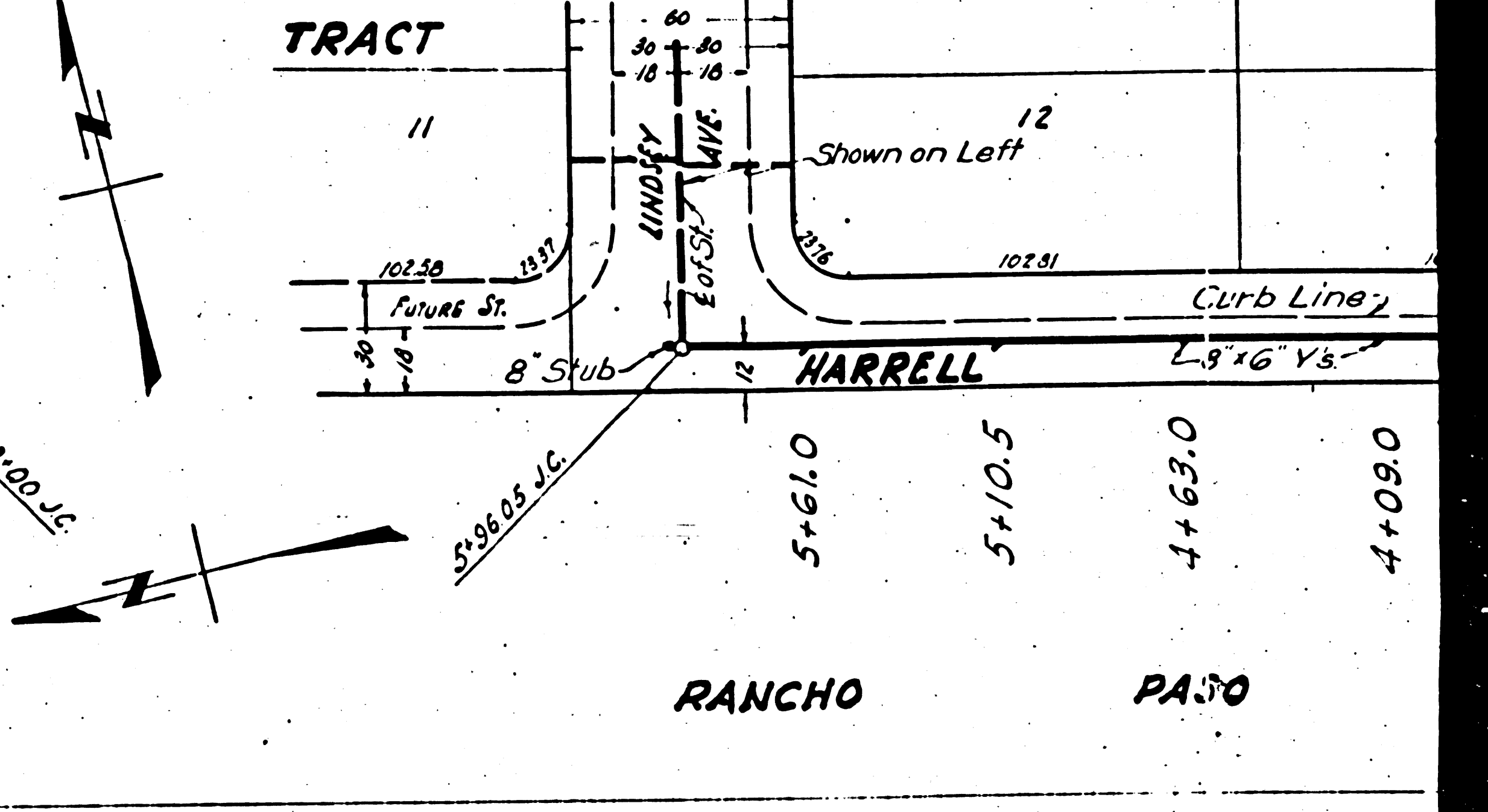
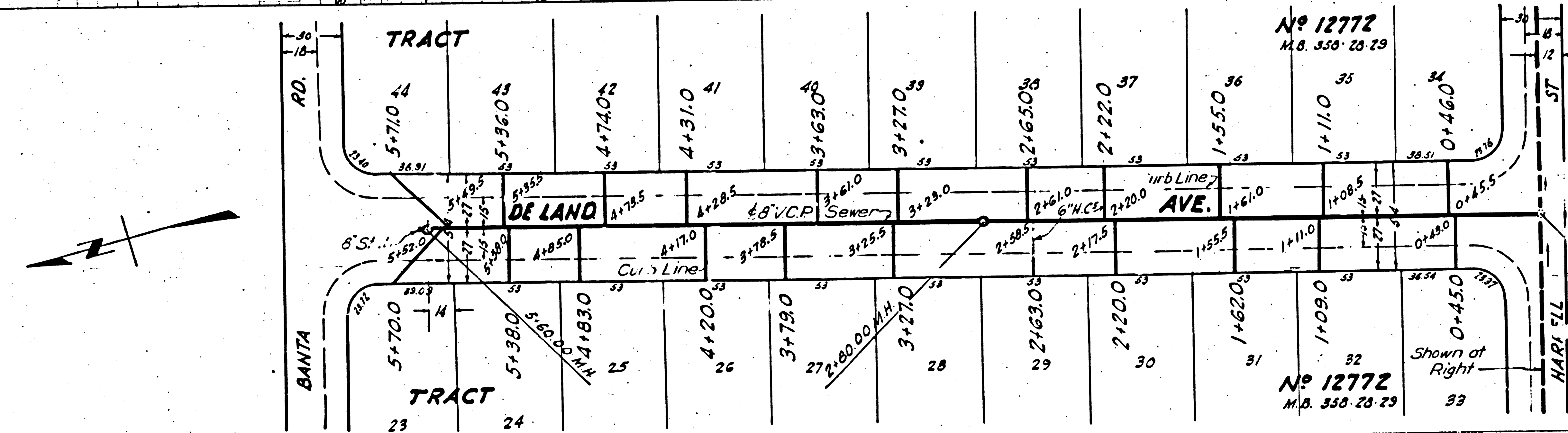
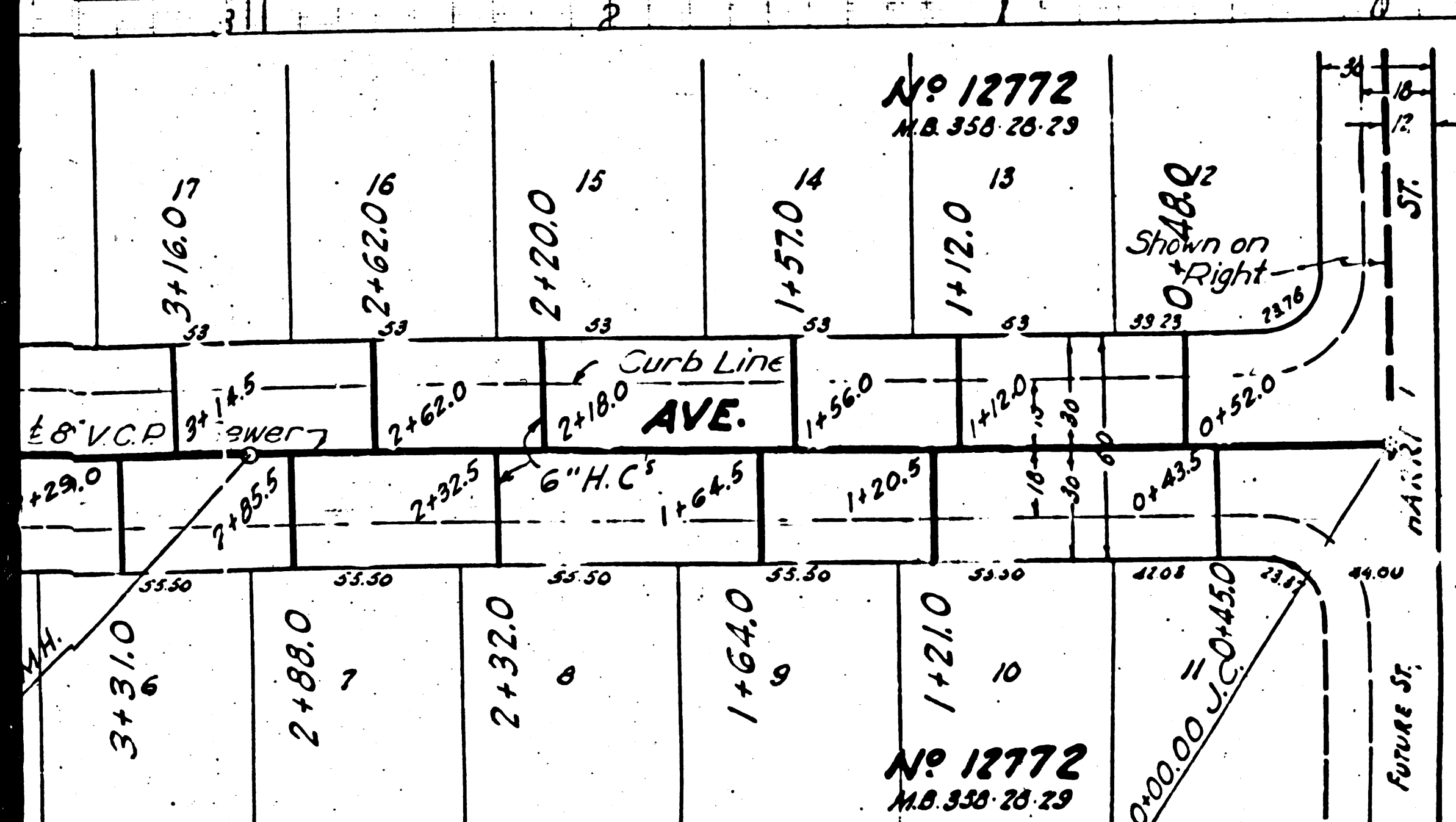
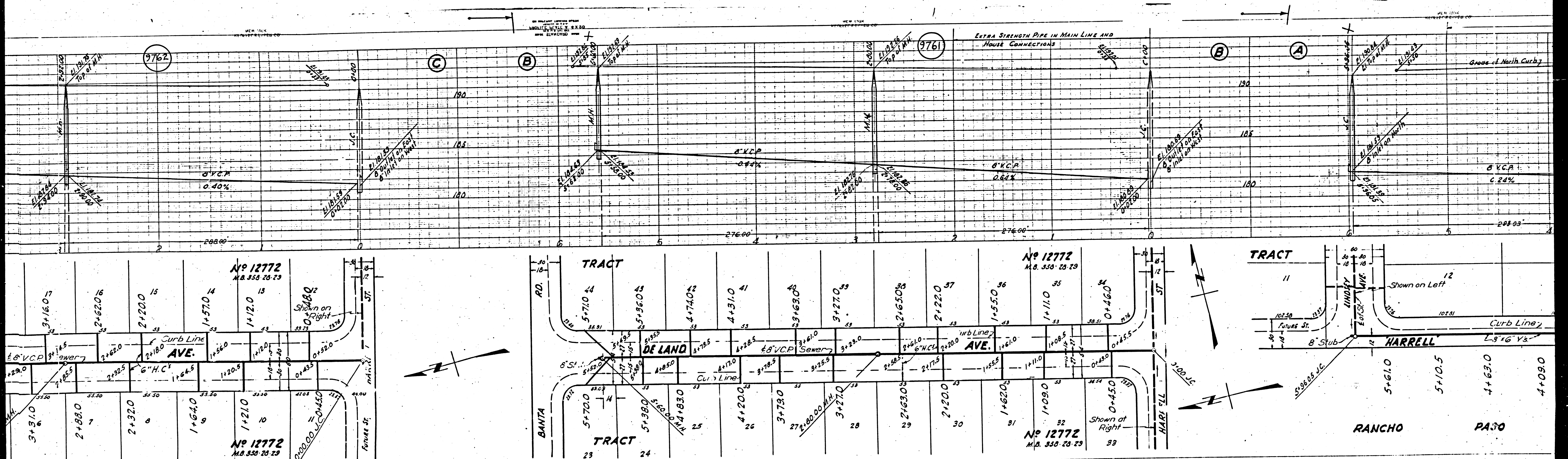
NOTE:
 GRADES TO WHICH THIS IMPROVEMENT IS TO BE CONSTRUCTED ARE SHOWN ON PLANS AND PROFILES
 GRADE POINTS FOR TOP OF CURB, CENTER LINE OF STREET OR CENTER LINE OF ALLEY ARE SHOWN BY
 CIRCLES ON PROFILES. AT ALL POINTS BETWEEN DESIGNATED POINTS THE GRADE SHALL BE ESTABLISHED SO
 AS TO CONFORM TO STRAIGHT LINE DRAWN BETWEEN SAID DESIGNATED POINTS
 ELEVATIONS ARE IN FEET ABOVE U.S.C. & G.S. MEAN SEA LEVEL
 THIS DRAWING AND THE DATA HEREON ARE HEREBY MADE A PART OF THE SPECIFICATIONS
 WORK SHALL BE CONSTRUCTED ACCORDING TO SPECIFICATIONS ON FILE IN THE OFFICE OF THE COUNTY
 ENGINEER AND SHALL BE PROSECUTED ONLY IN THE PRESENCE OF THE COUNTY ENGINEER
 BEFORE WORK SHALL BE STARTED THE CONTRACTOR MUST OBTAIN A PERMIT TO OCCUPY IN COUNTY
 STREETS FROM THE L.A. COUNTY ROAD DEPT. 211 S. MAIN ST. AND MAKE A DEPOSIT WITH THE COUNTY
 ENGINEER 25% LOS ANGELES COUNTY ENGINEERING BOND, SUFFICIENT TO COVER THE COST OF
 CONSTRUCTION INSPECTION AND RECORD PLANS
 APPROVAL OF THIS PLAN BY THE COUNTY OF LOS ANGELES DOES NOT CONSTITUTE A REPRESENTATION
 AS TO THE ACCURACY OF THE LOCATION OF OR THE EXISTENCE OR NON-EXISTENCE OF ANY UNDERGROUND
 UTILITY PIPE OR STRUCTURE WITHIN THE LIMITS OF THIS PROJECT

COUNTY OF LOS ANGELES, CALIFORNIA
 APPROVED *[Signature]* COUNTY ENGINEER
 APPROVED *[Signature]* CIVIL ENGINEER OF COUNTY
 SANITARIAN DISTRICT NO. 2

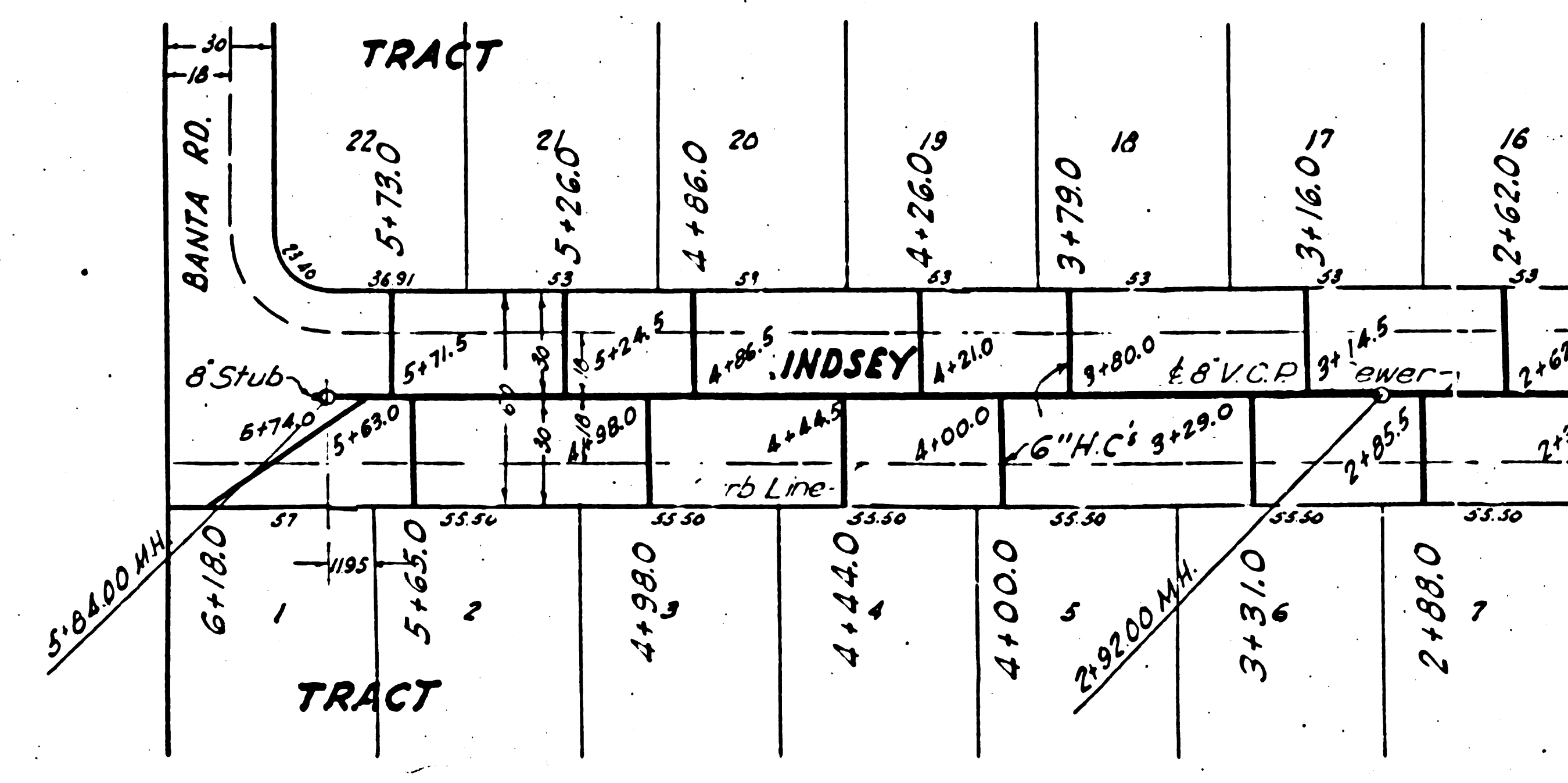
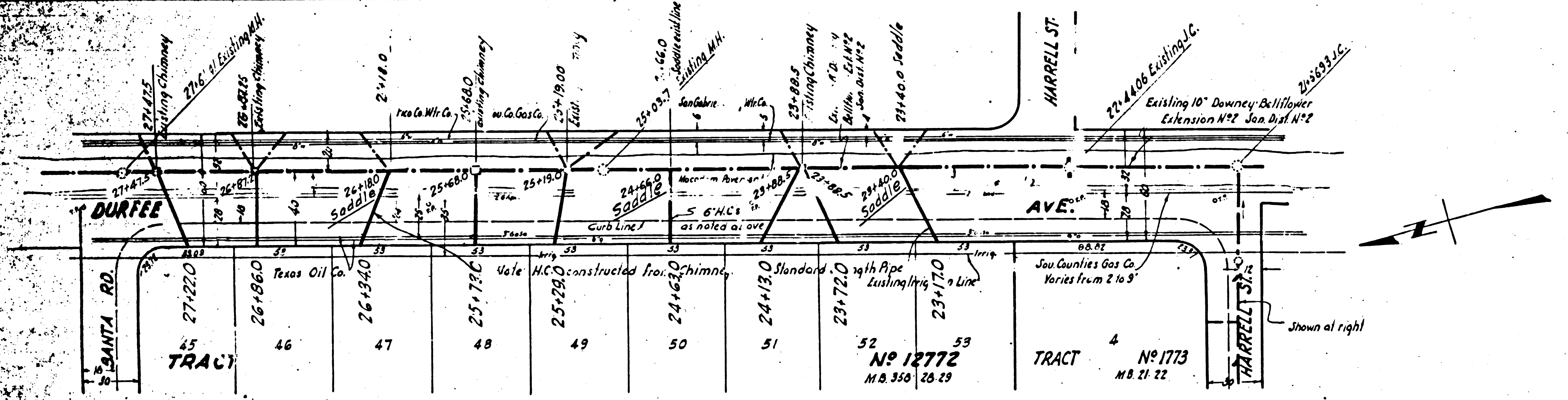
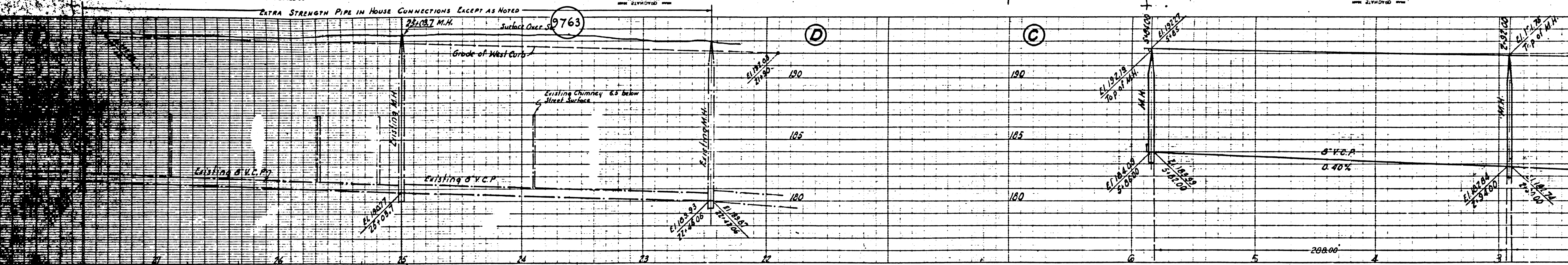


CHECKED BY *[Signature]* DEC 14 1949
 SCALE OF COUNTY ENGINEER, SCALE NO. 1103

Checked by Nelson - 2-15-50
 Trim Line



②①



23